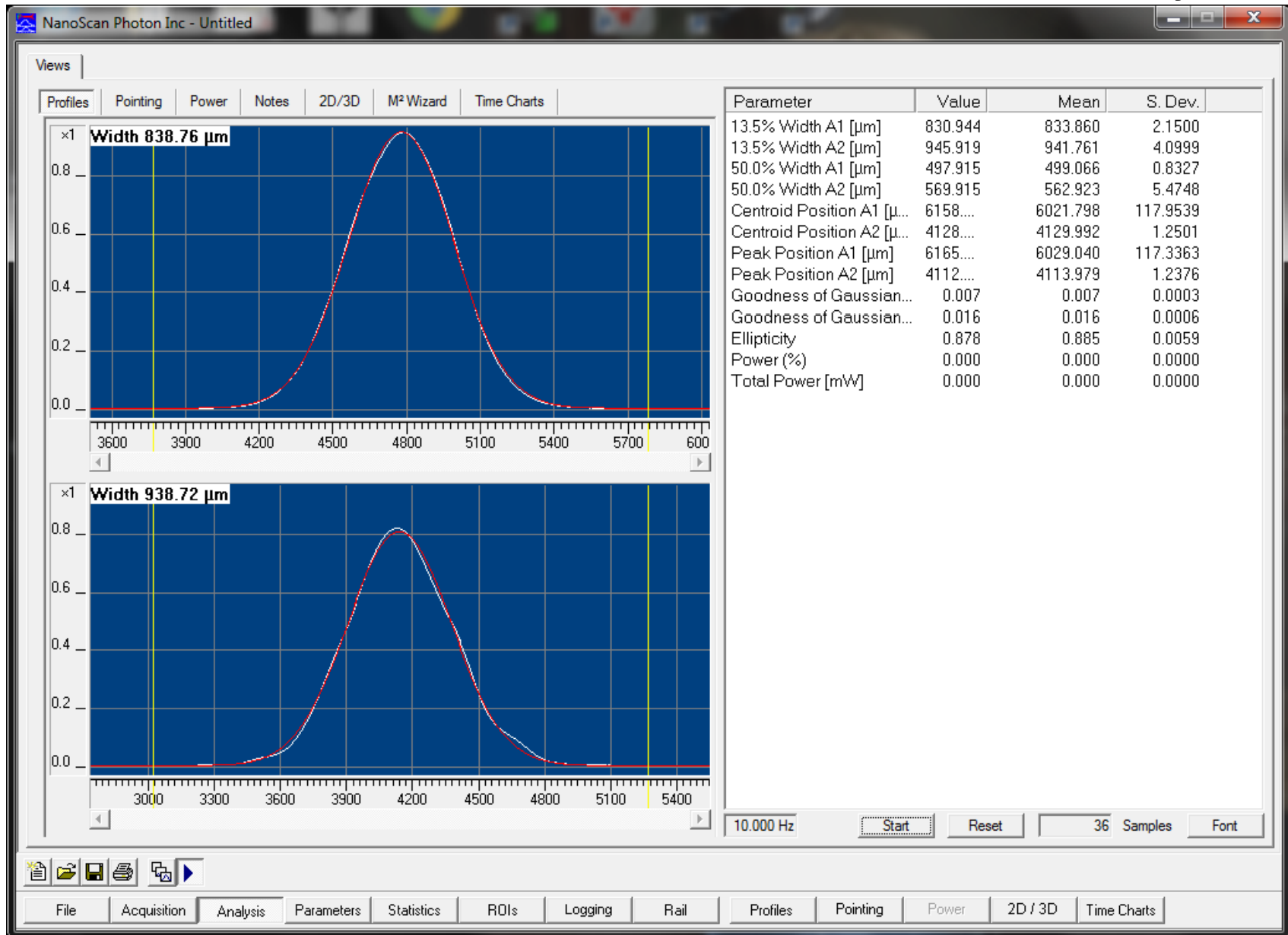
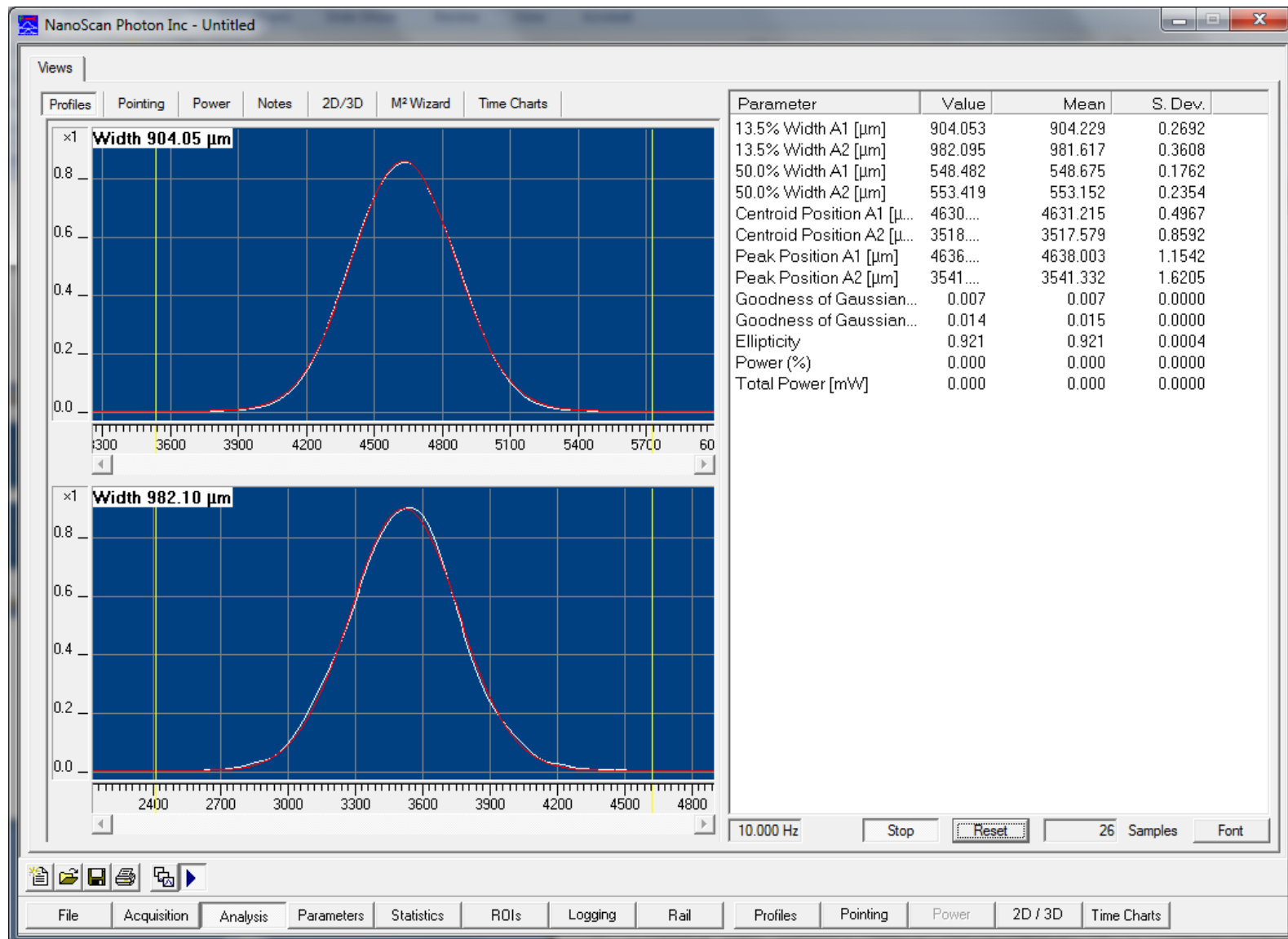


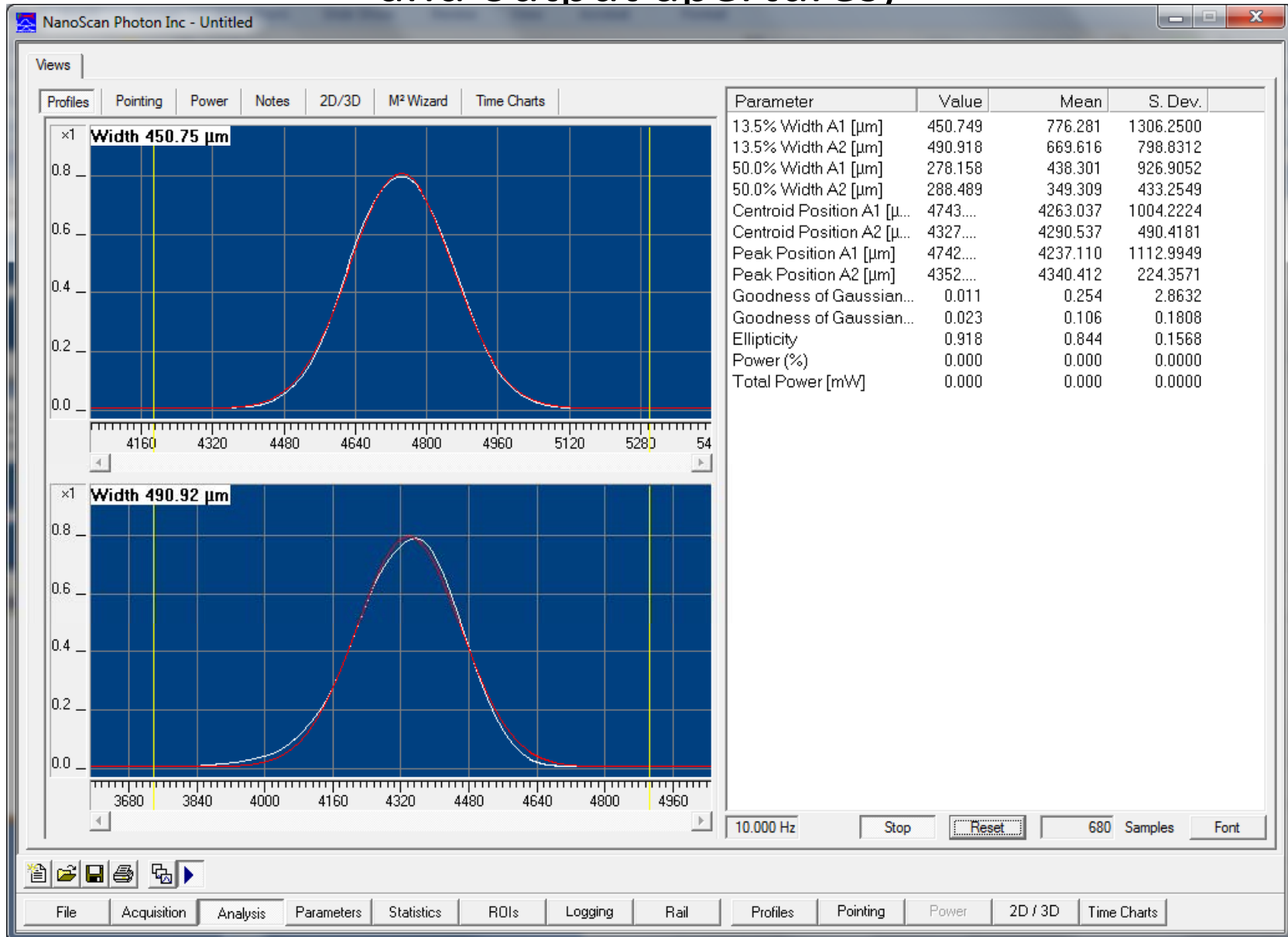
# Green beam on ISCTEX after 1<sup>st</sup> Faraday



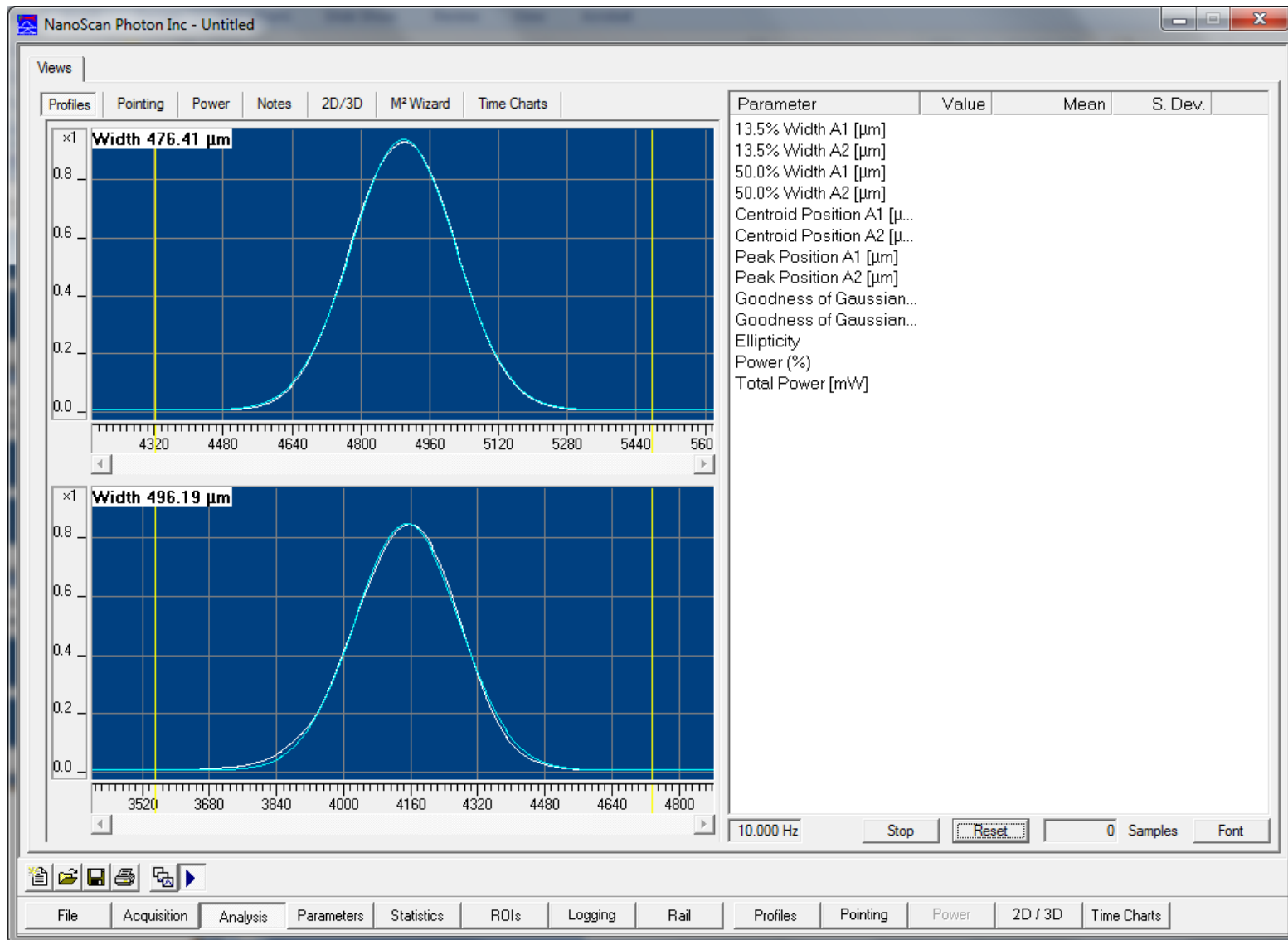
After adjusting alignment through 1<sup>st</sup> Faraday (beam is low at Faraday input and output now)



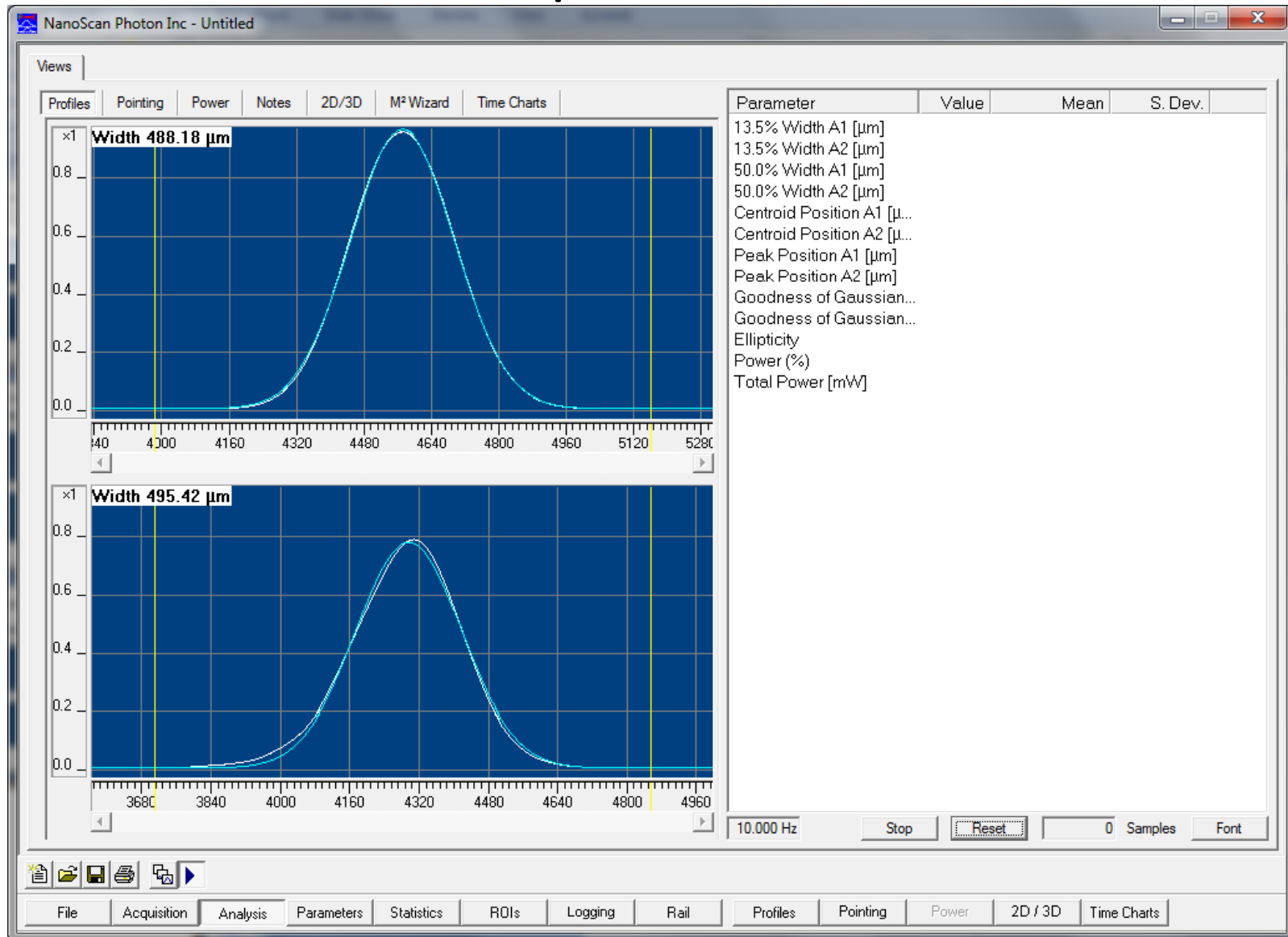
After EOM adjustment (beam is high on both input and output apertures)



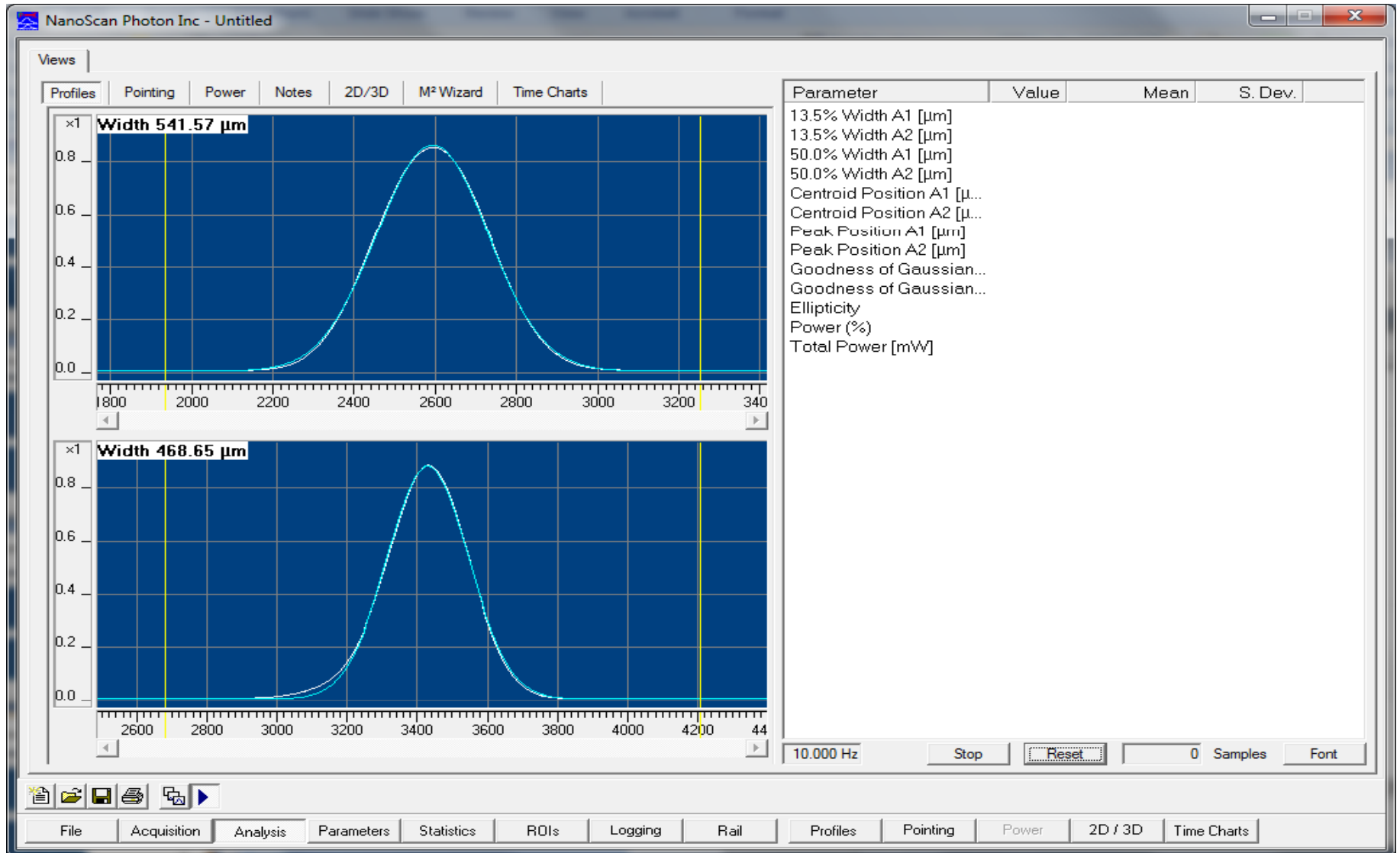
After adjusting lens right after Faraday, EOM had to be realigned



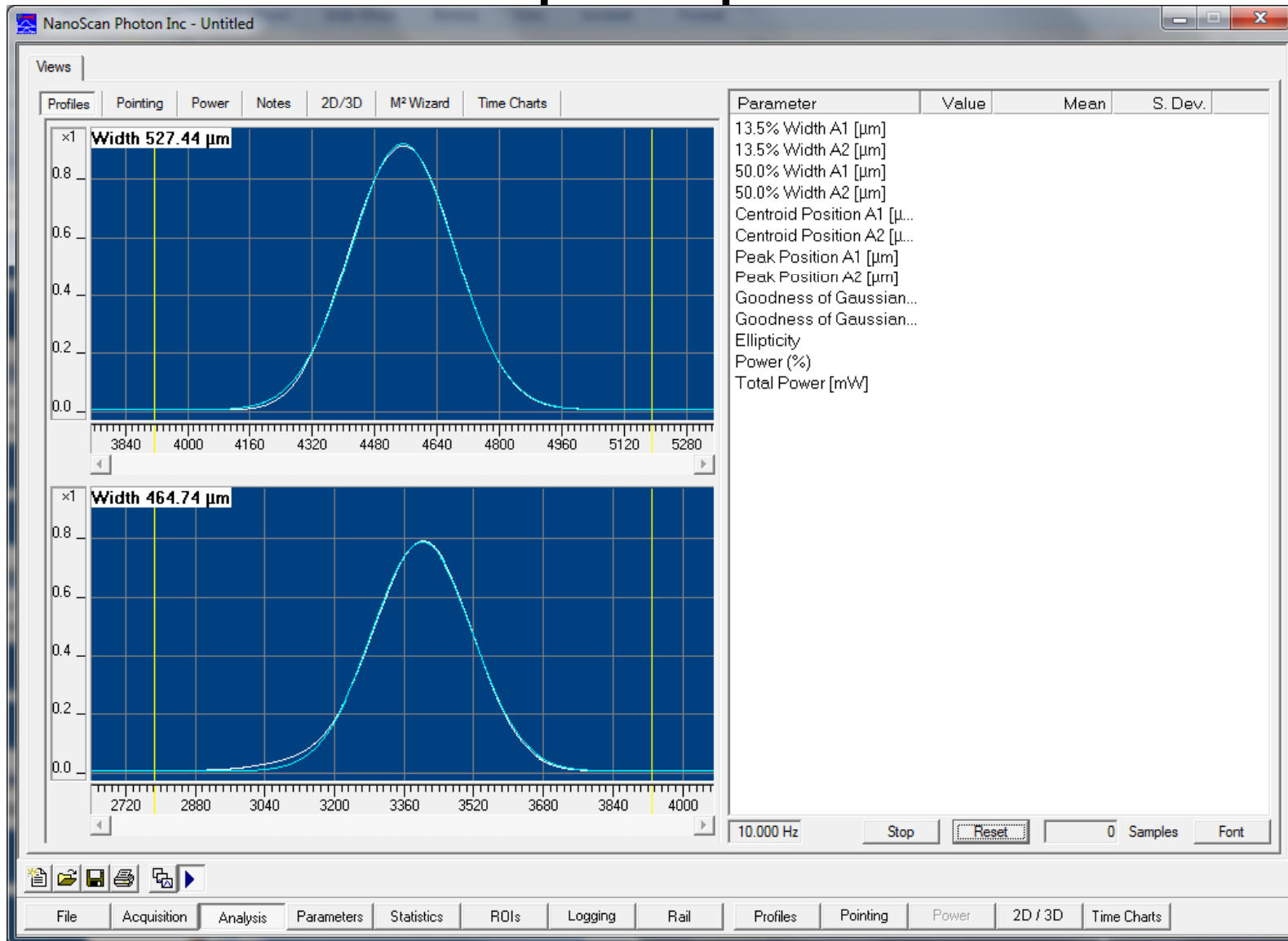
# EOM adjusted again to not hit top of output aperture



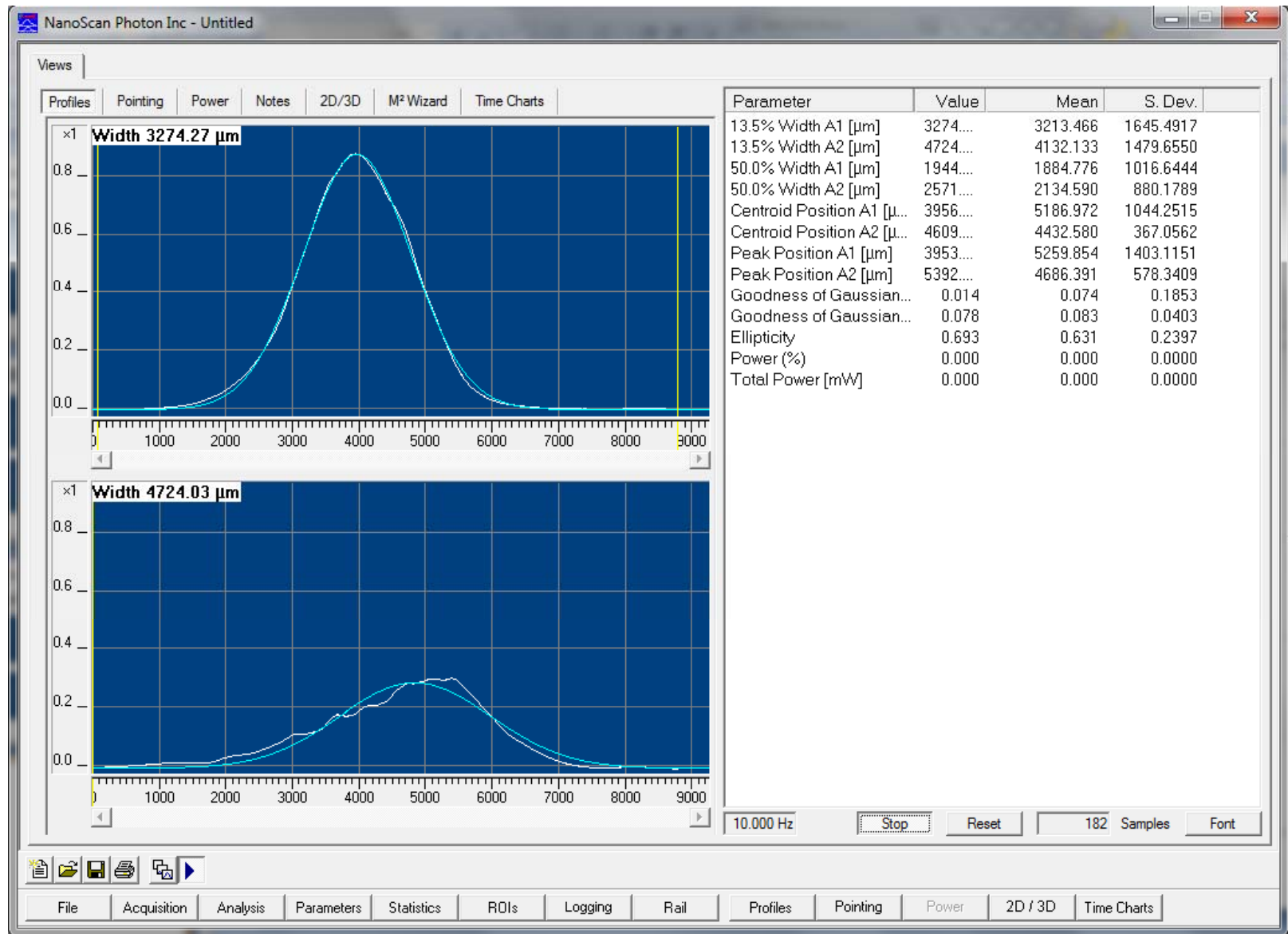
2<sup>nd</sup> Faraday added. The beam is a tiny bit high at input and low and off center towards enclosure wall at Faraday output. (beam measured after 1<sup>st</sup> iris)



# A little bit better centered on Faraday output aperture



# Return beam near WFS A





# Before WFS B

