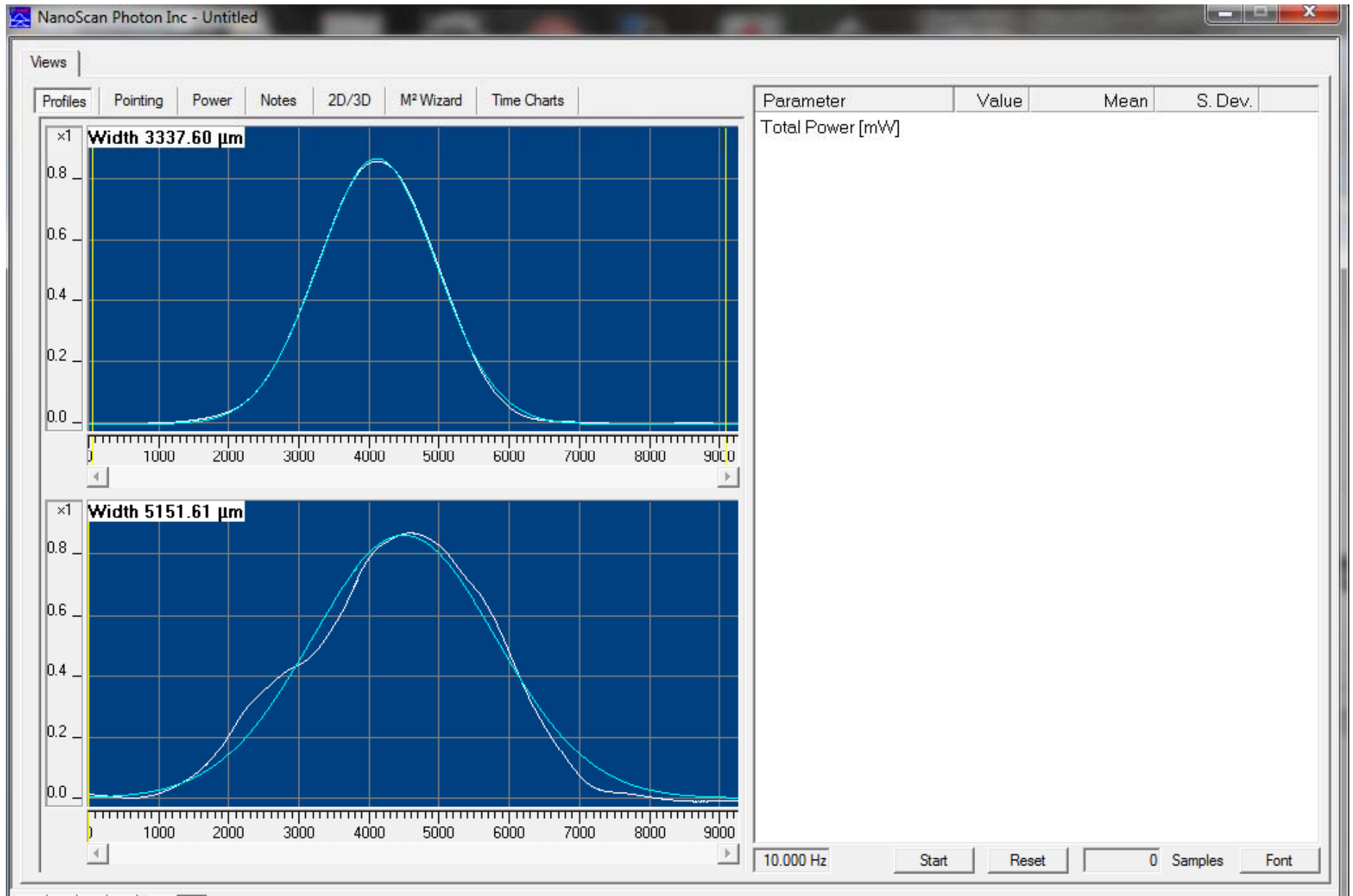
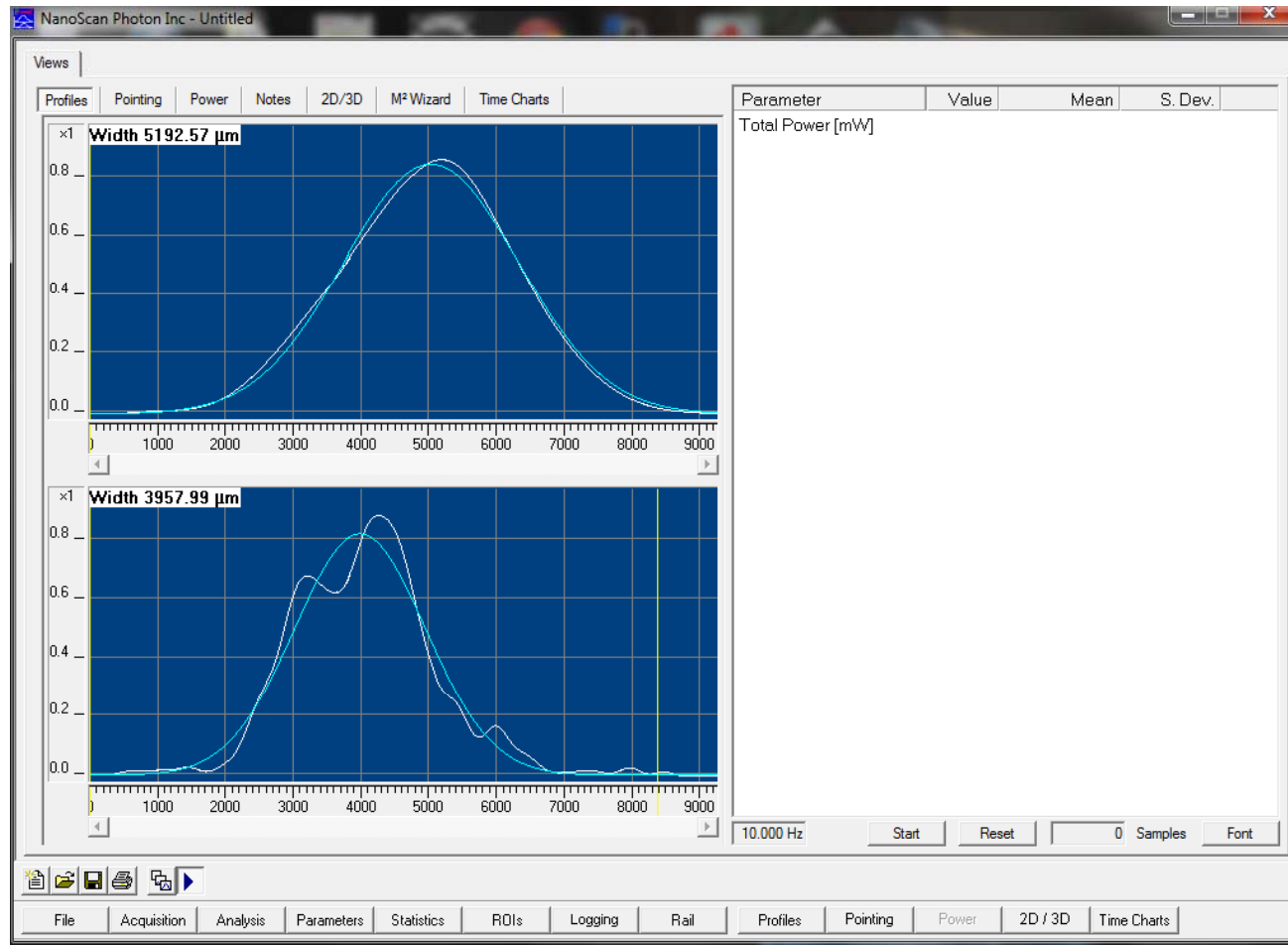


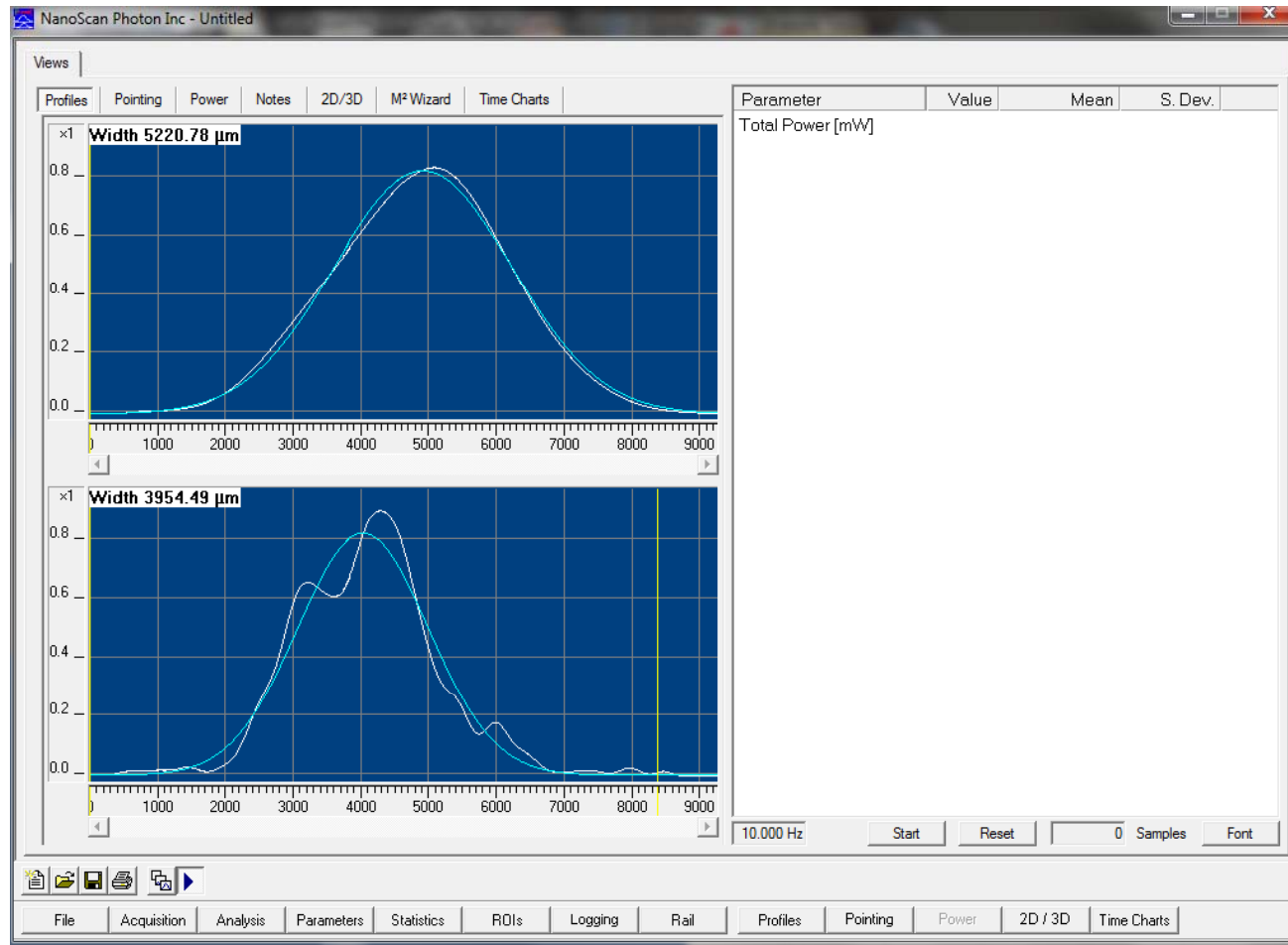
Wfs a, 1=HORIZONTAL 2=VERTICAL



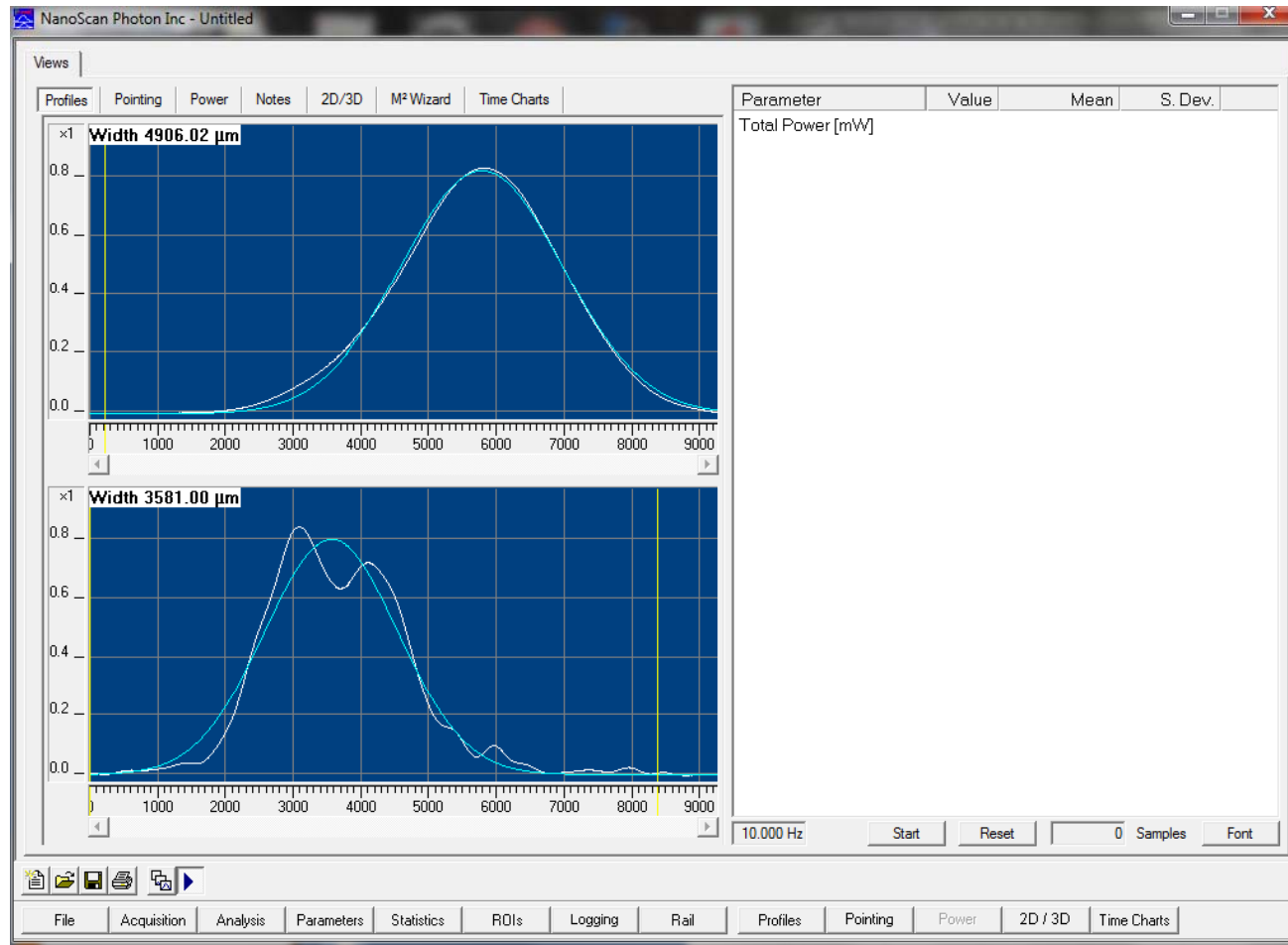
WFS B before any changes (ITMX misaligned)



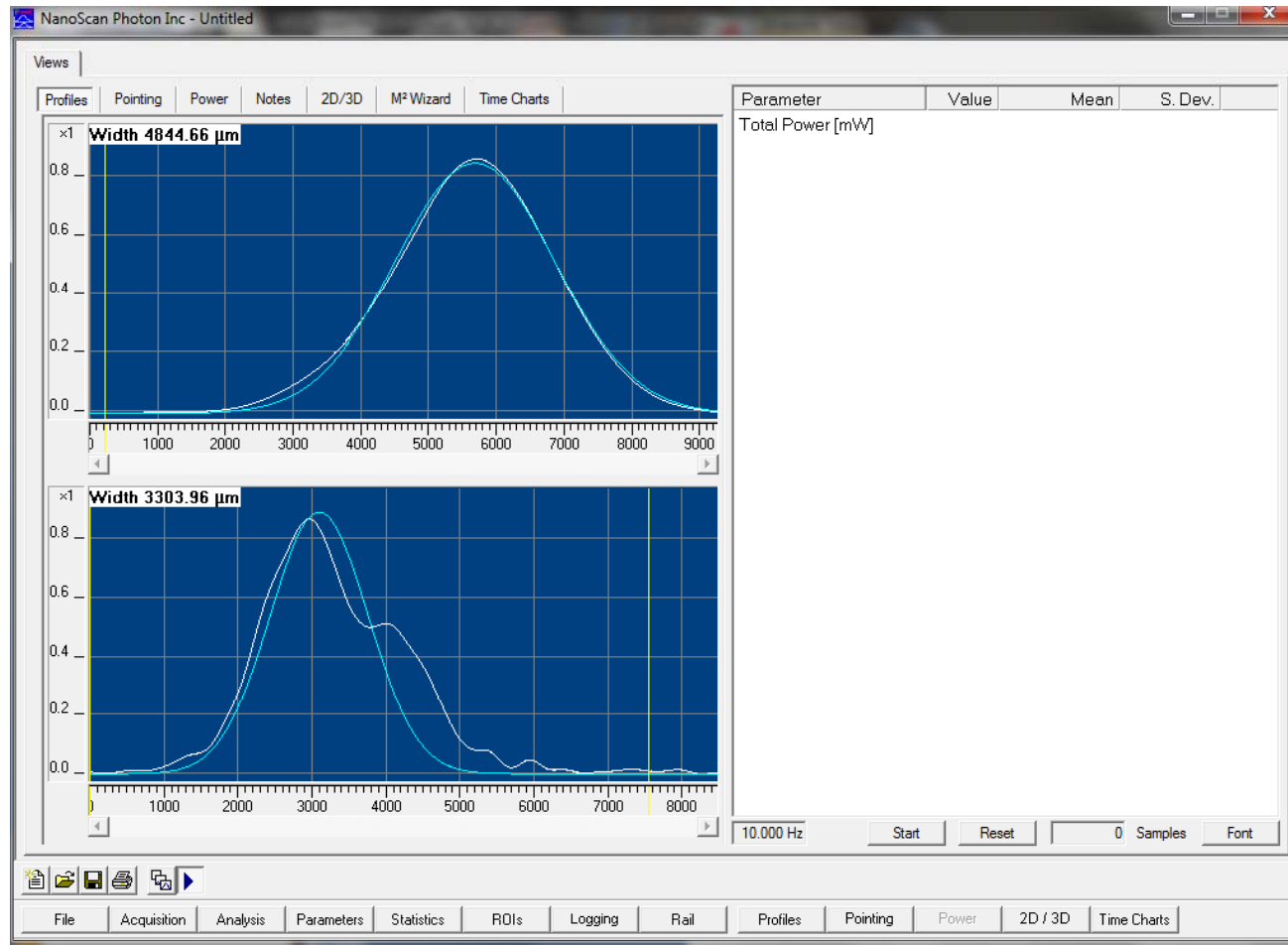
WFS B ETMX reaction chain misaligned by 100urad



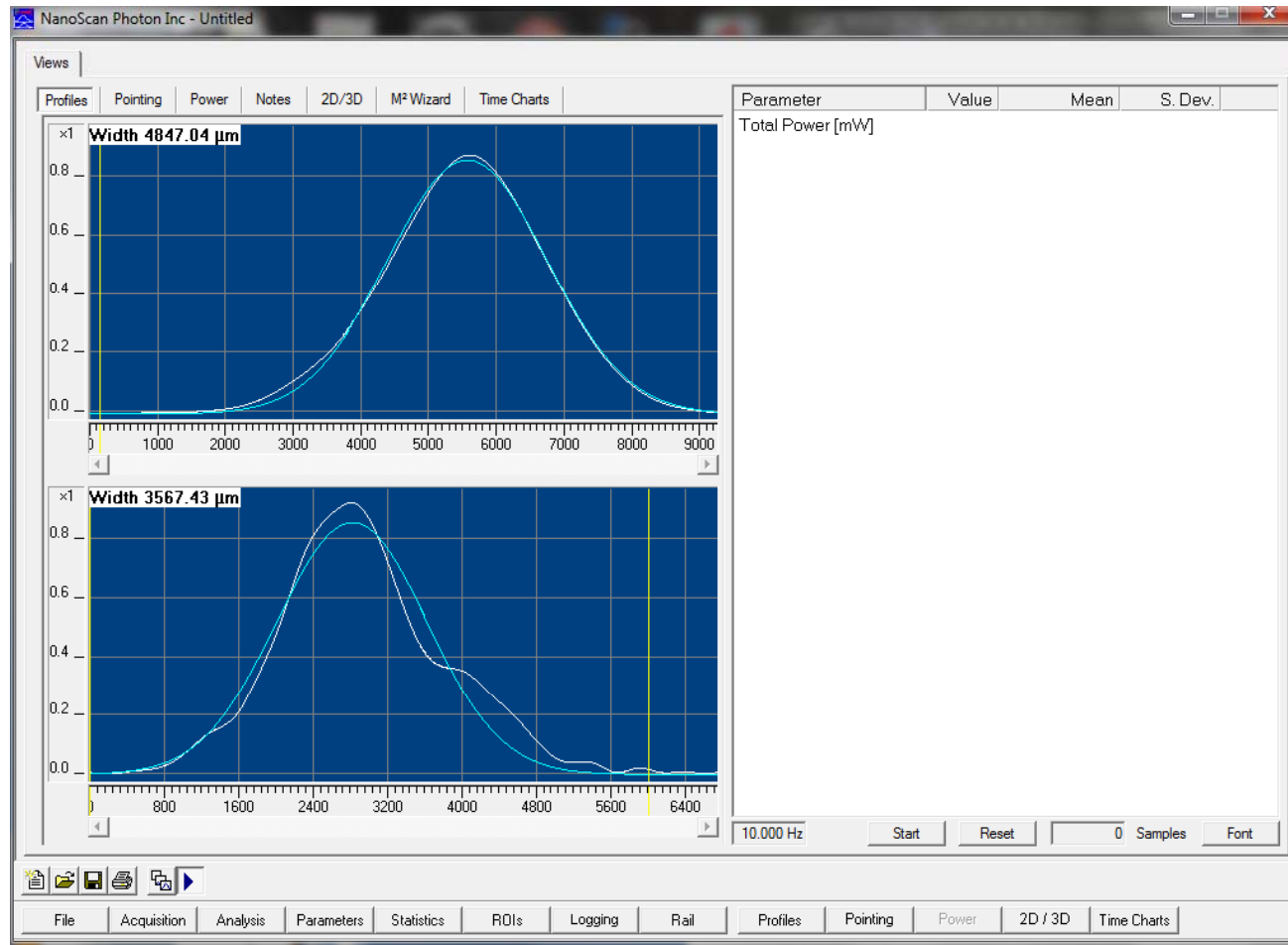
WFS B ERM back to original alignment, QPD servos on



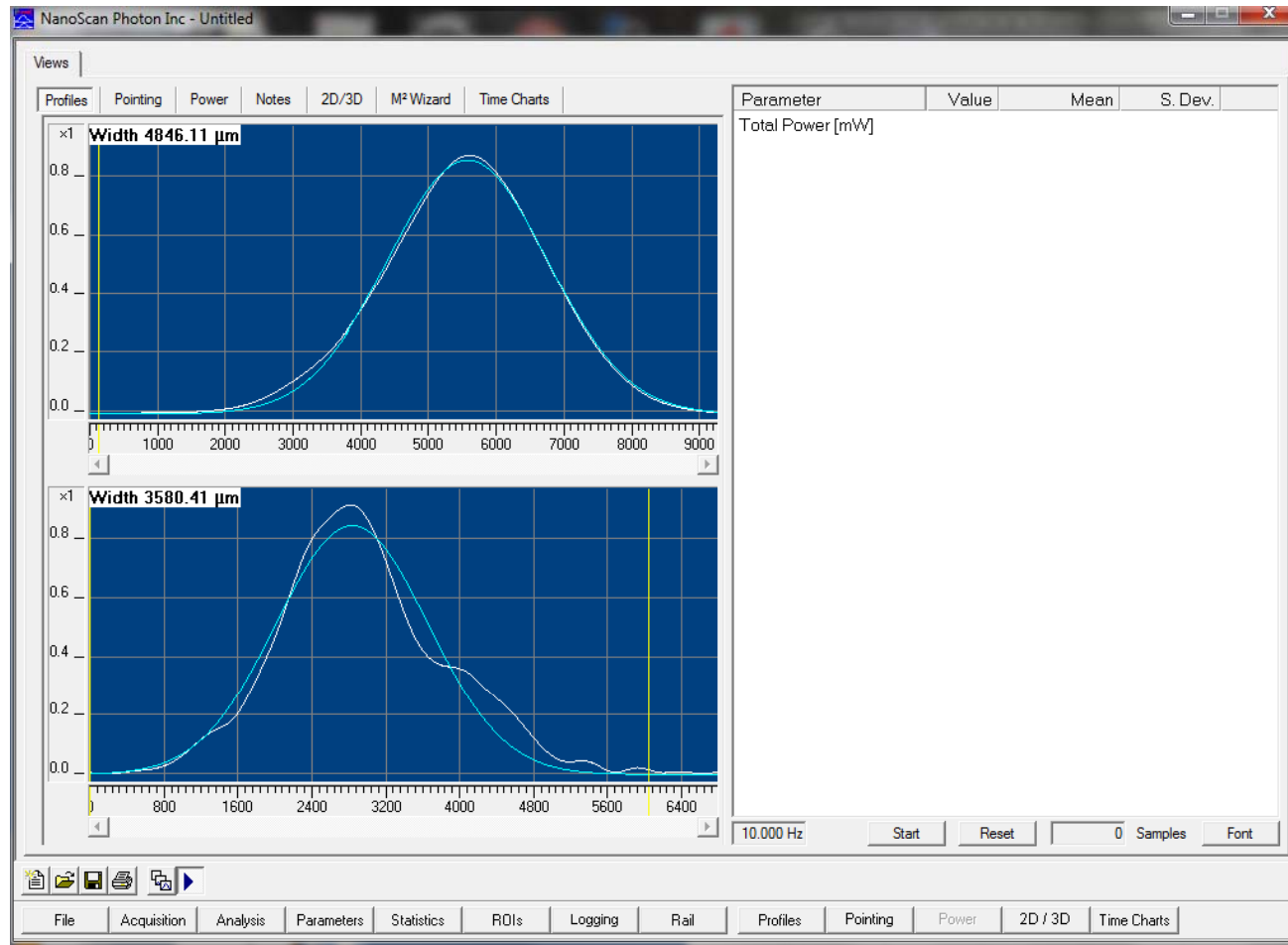
WFS B IP pos offset=100 counts



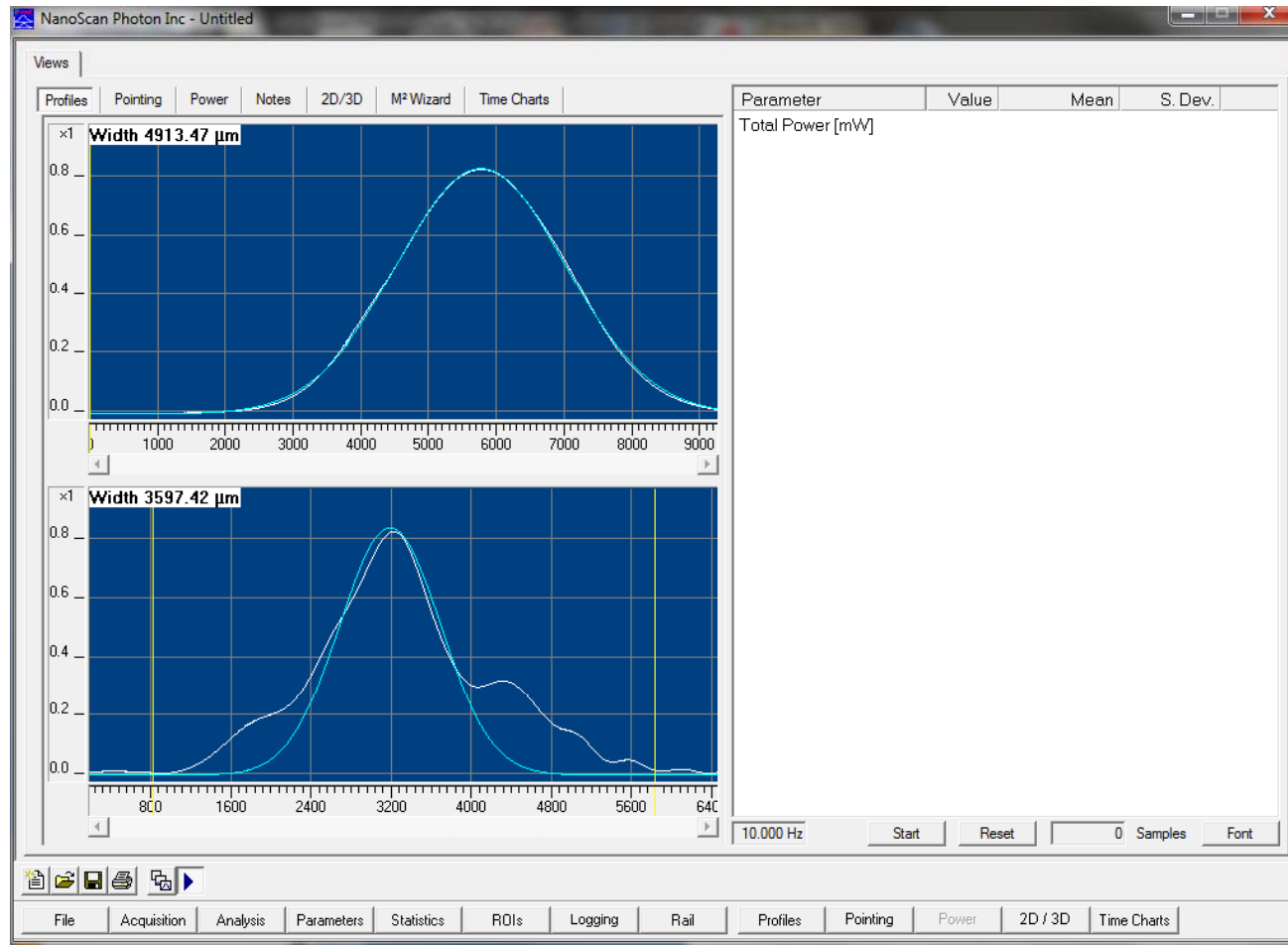
WFS B IP pos offset = 200 counts



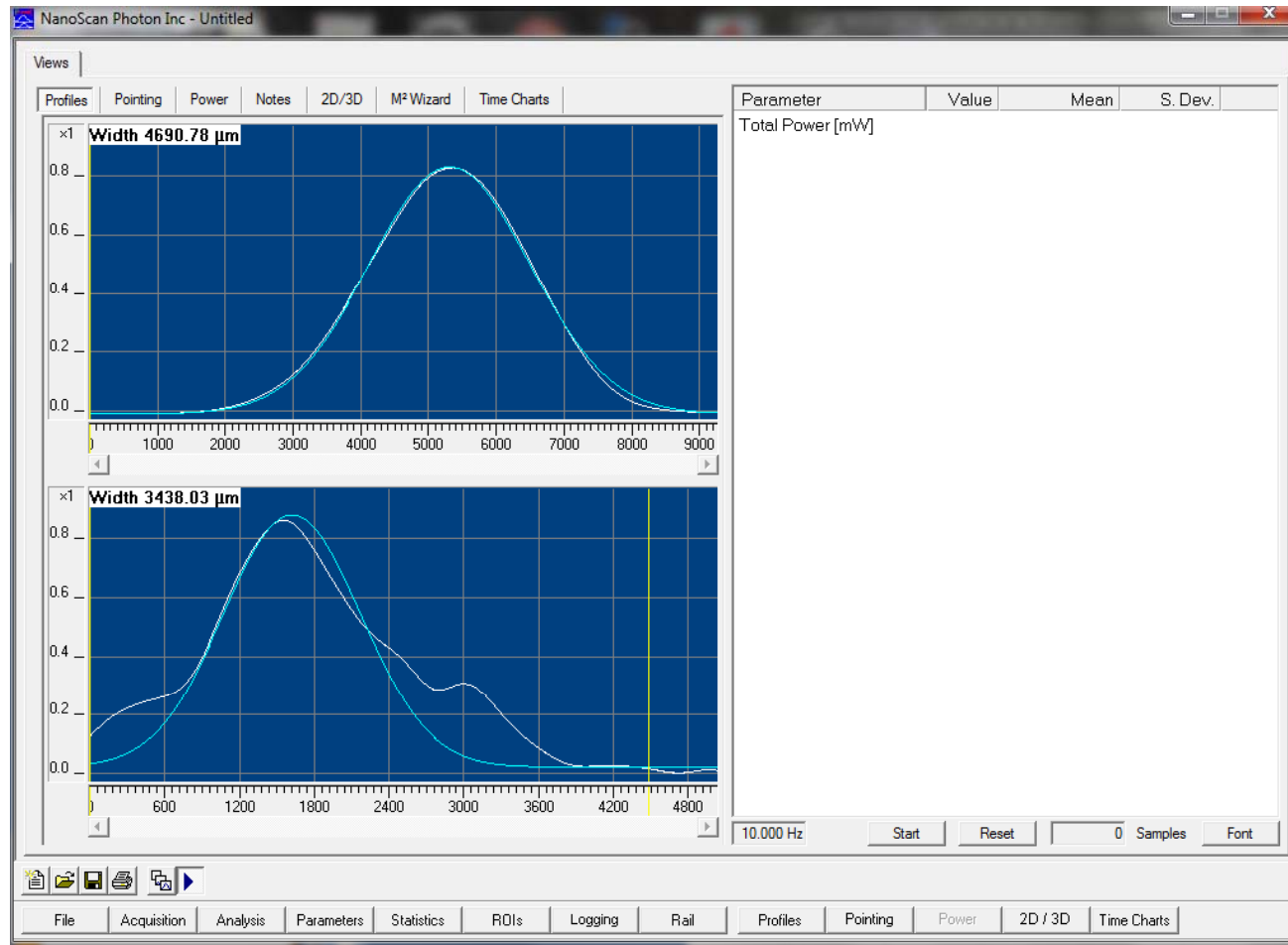
WFS B IP pos offset=300 counts



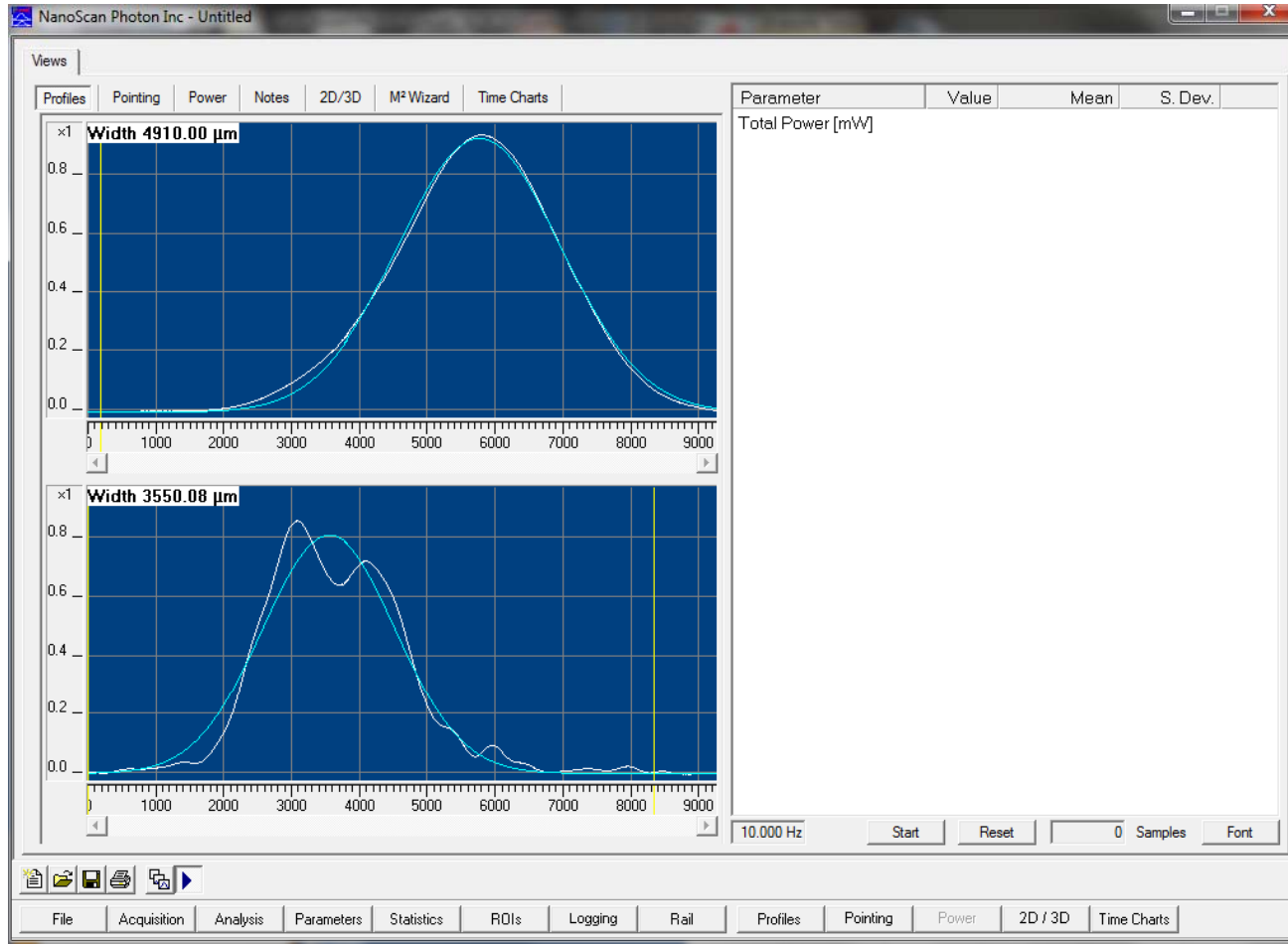
WFS B IP ang offset=100 counts



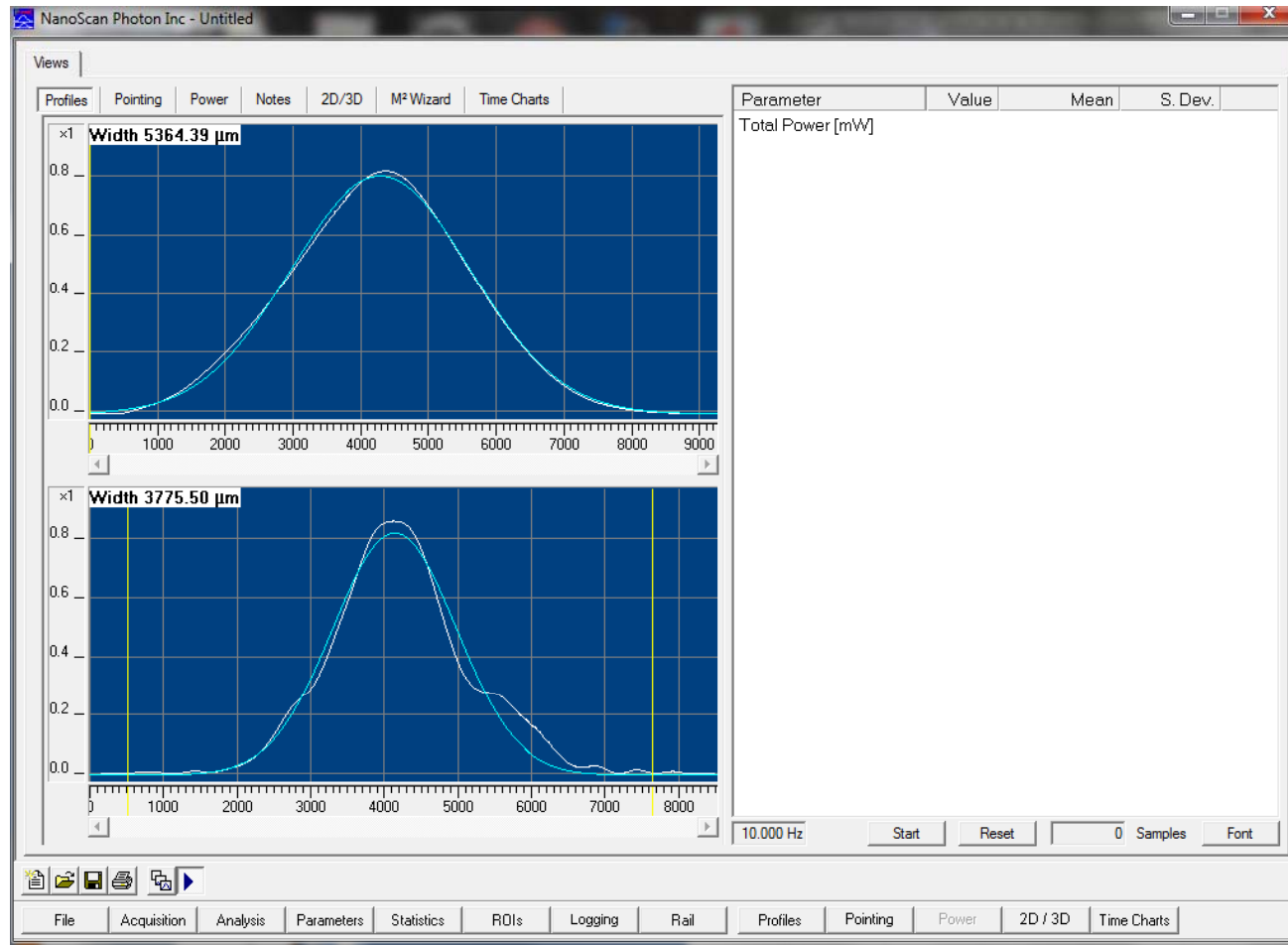
WFS B IP ang offset=50 counts



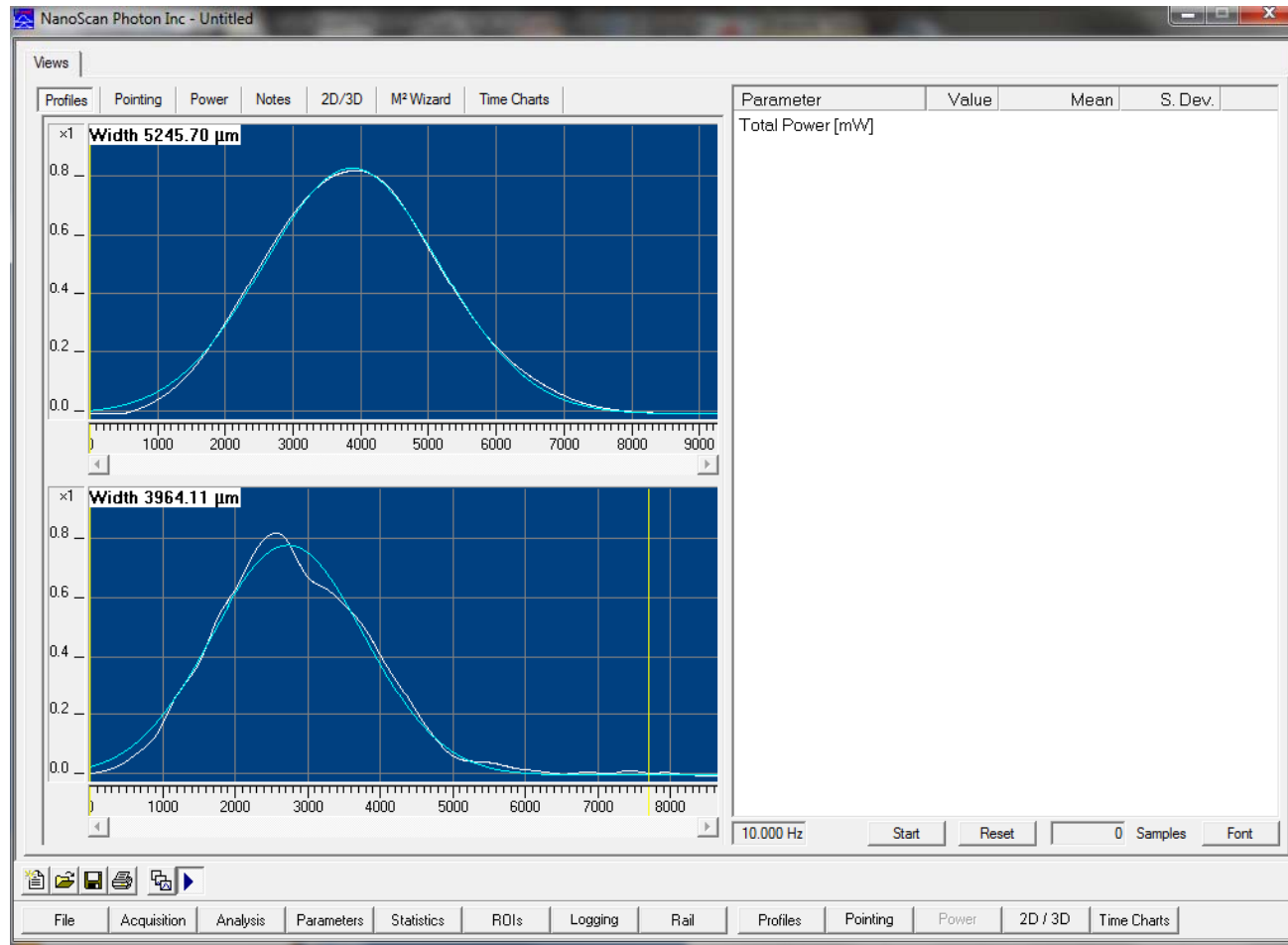
WFS B No offsets



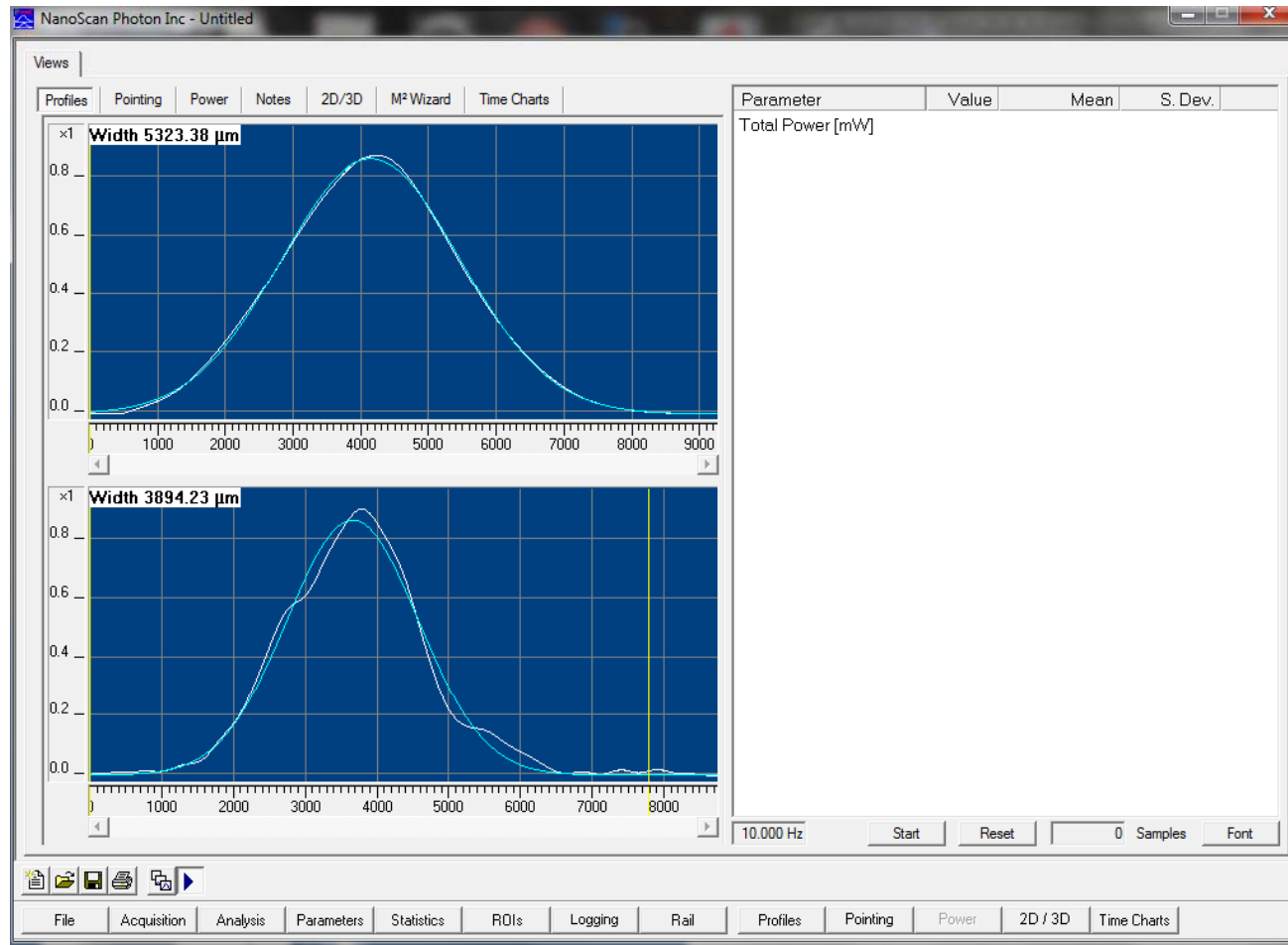
WFS B IP ang offset=-50counts



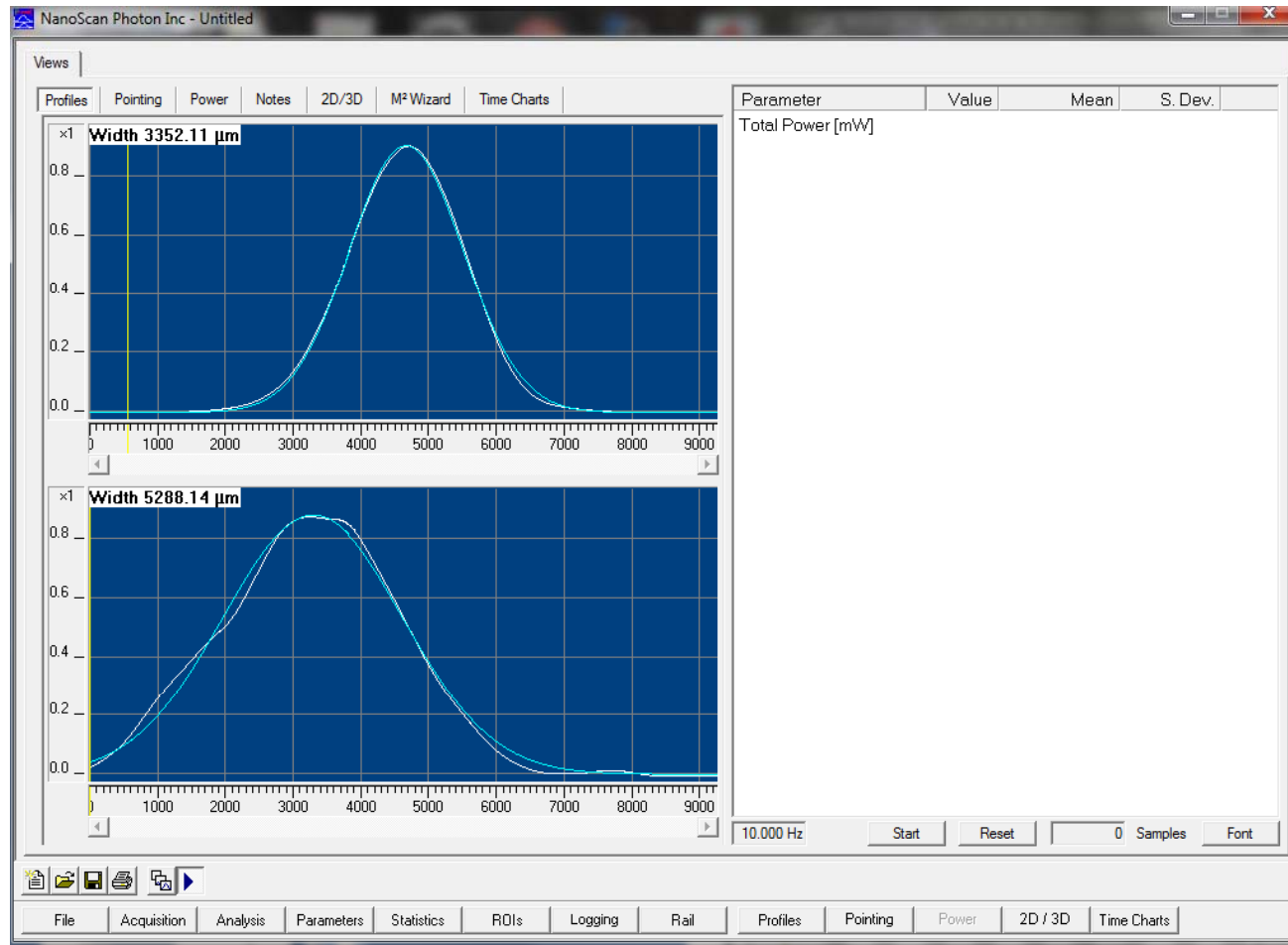
WFS B IP ang offset = -100 counts



Wfs B, IP pos offset=150 IP ang=-50



WFS A IP pos offset=150 IP ang=-50



WFS A IP pos=300 ang=-50

