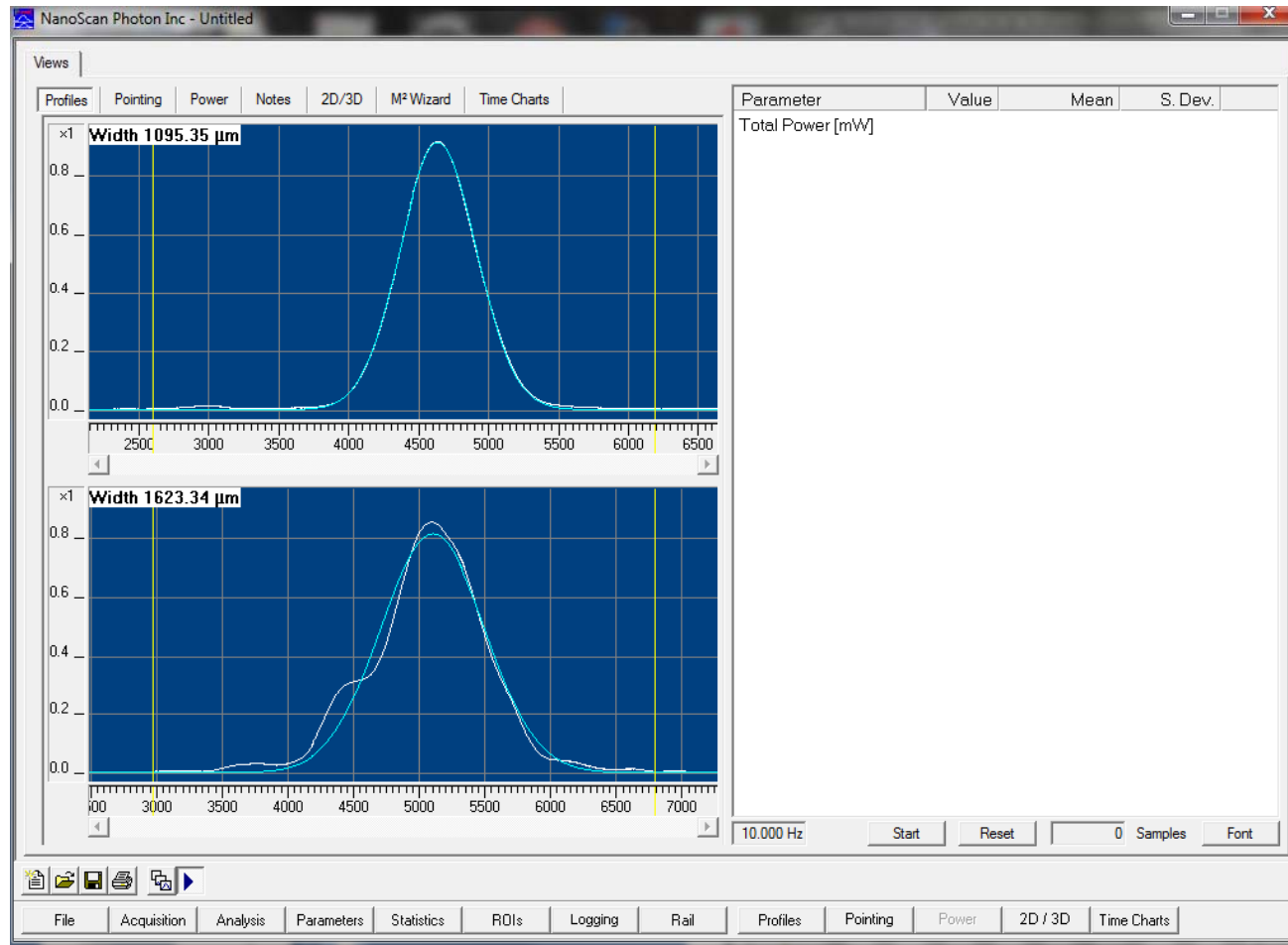
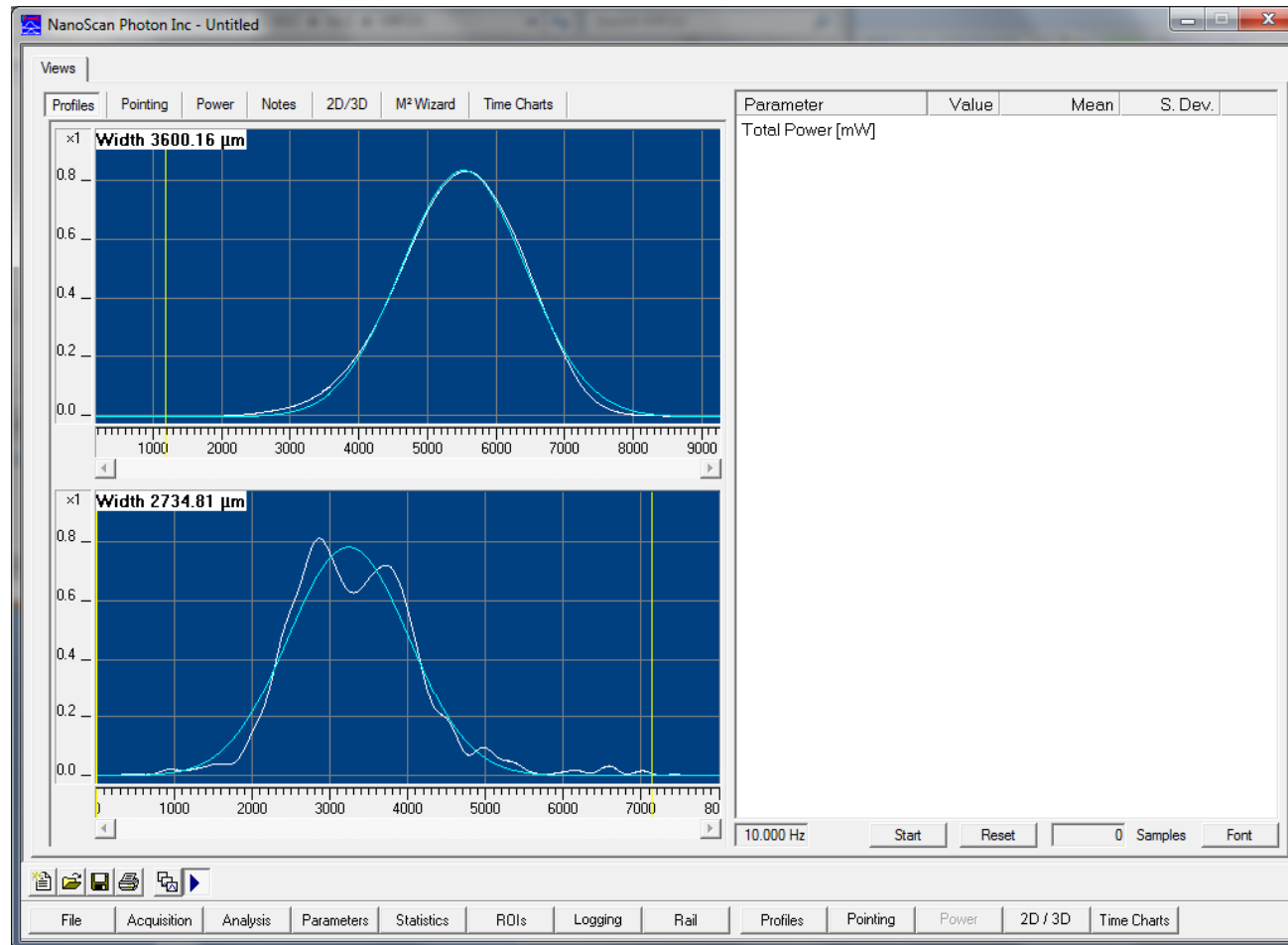


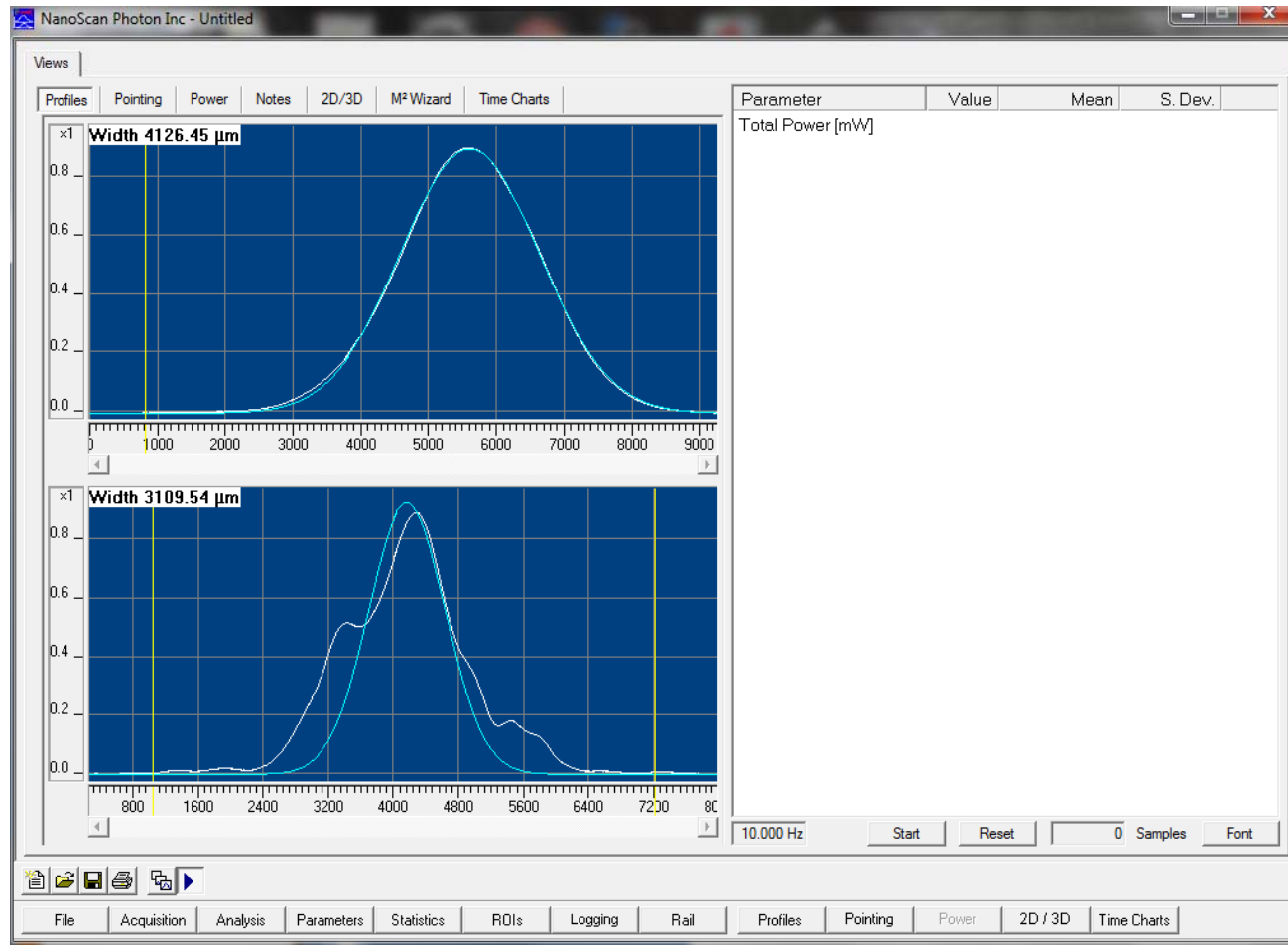
Path towards WFS B, 1=hor 2=vert 20 inches from furthest mirror



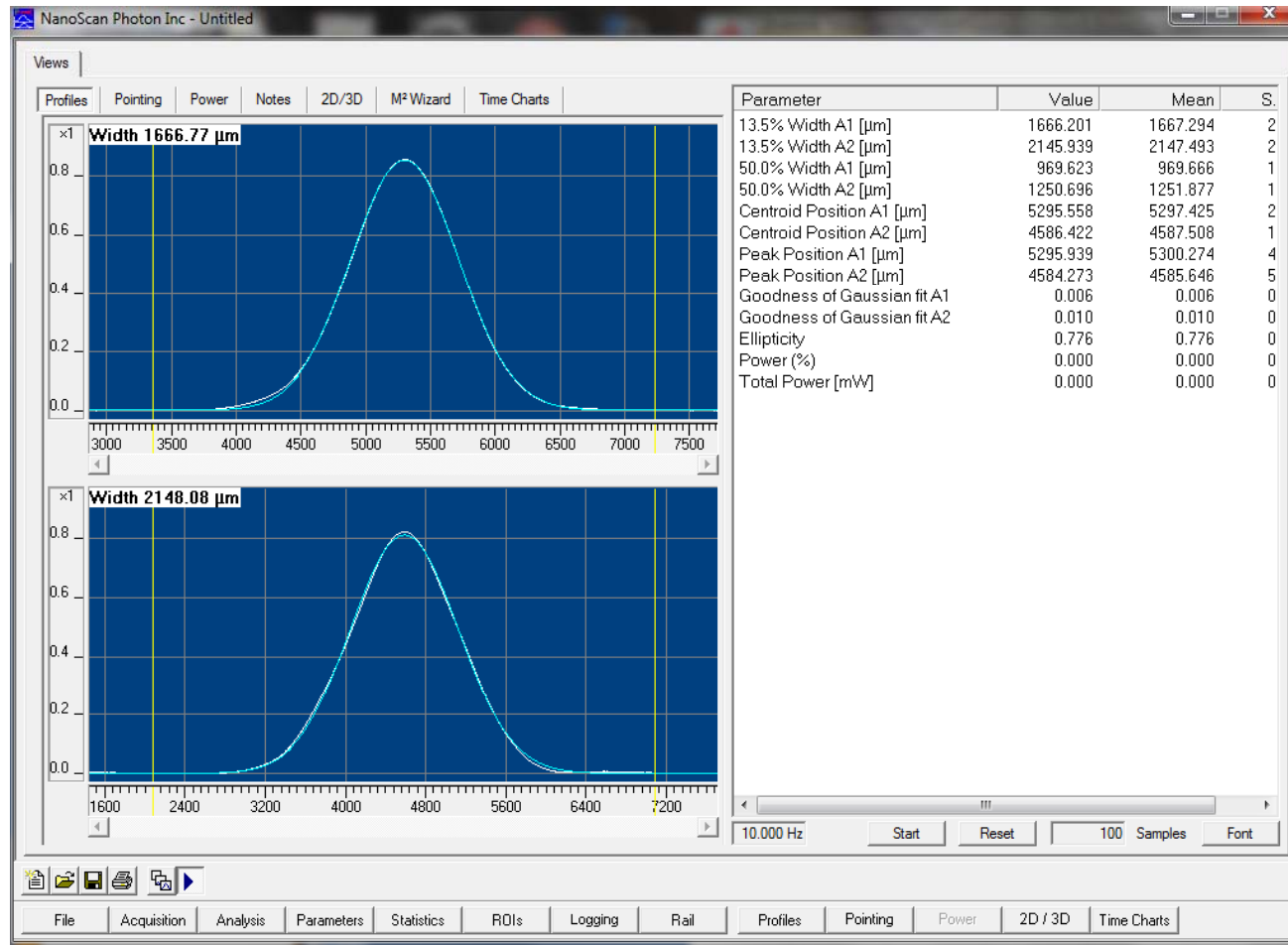
6 inches before WFS B



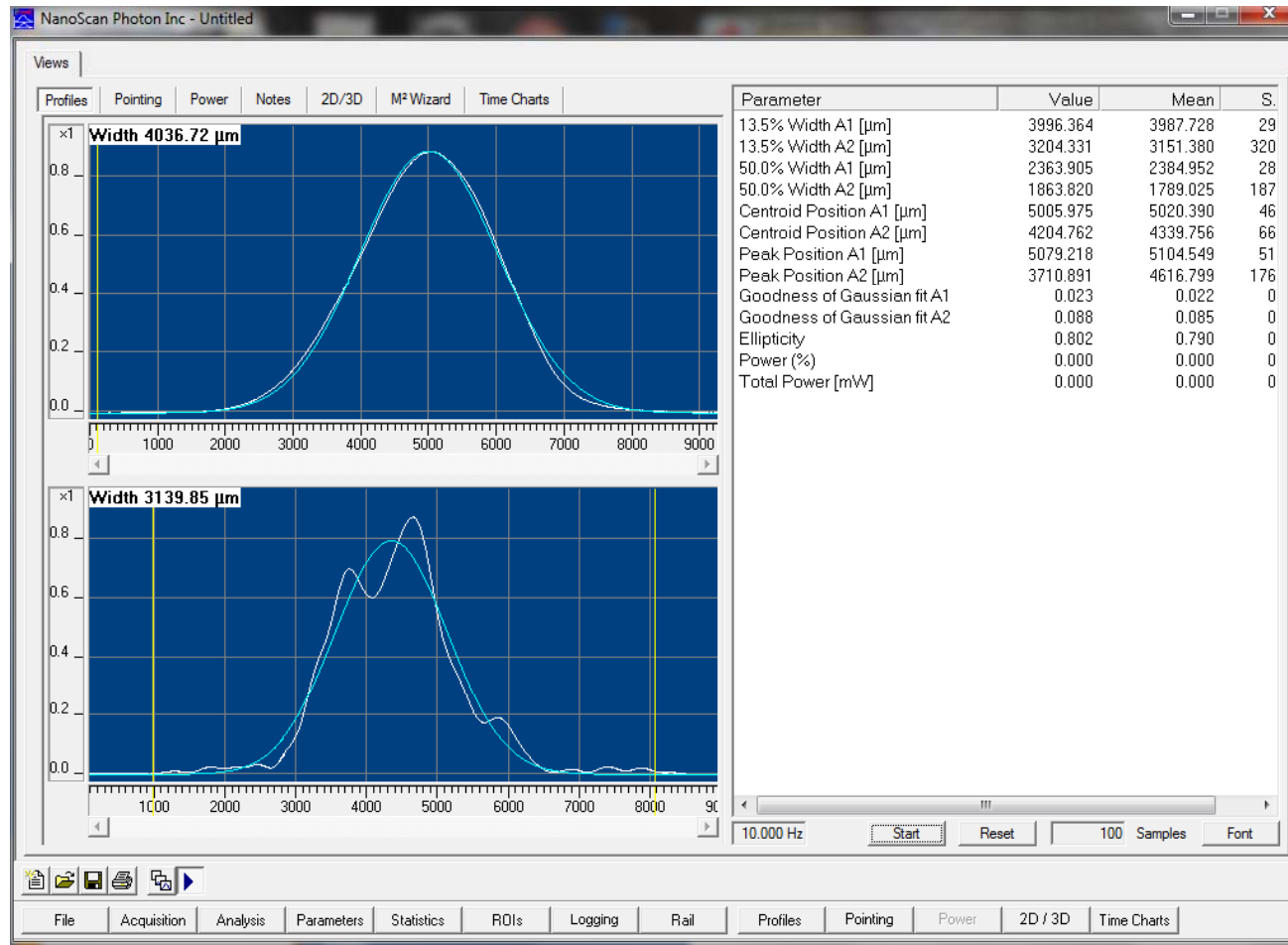
¼ turn ccw on faraday pitch knob closer to laser (1st knob)



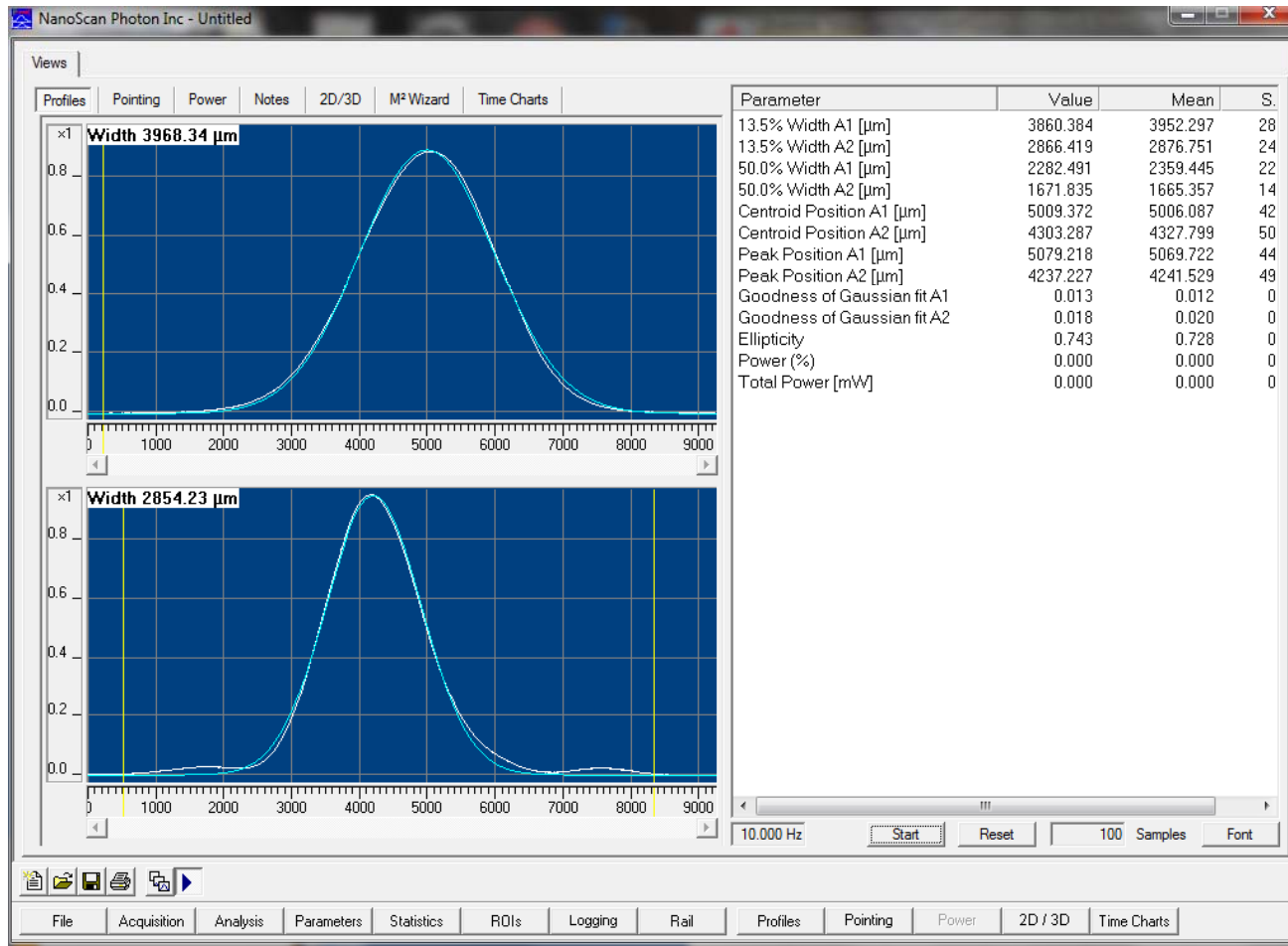
Beam going towards chamber after faraday re-tuning



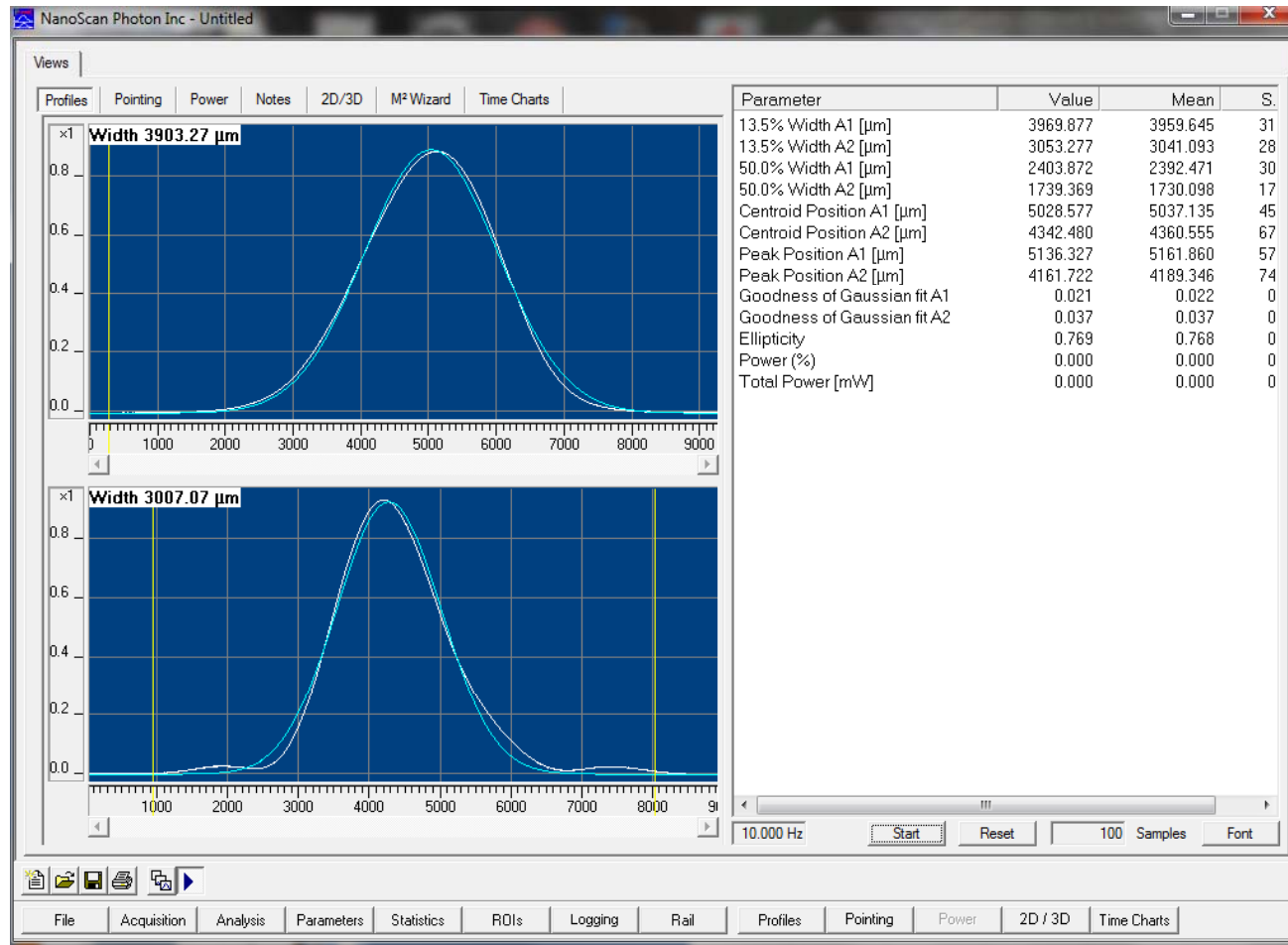
4 inches from WFS B, iris open



4 inches in front of WFS B iris closed down

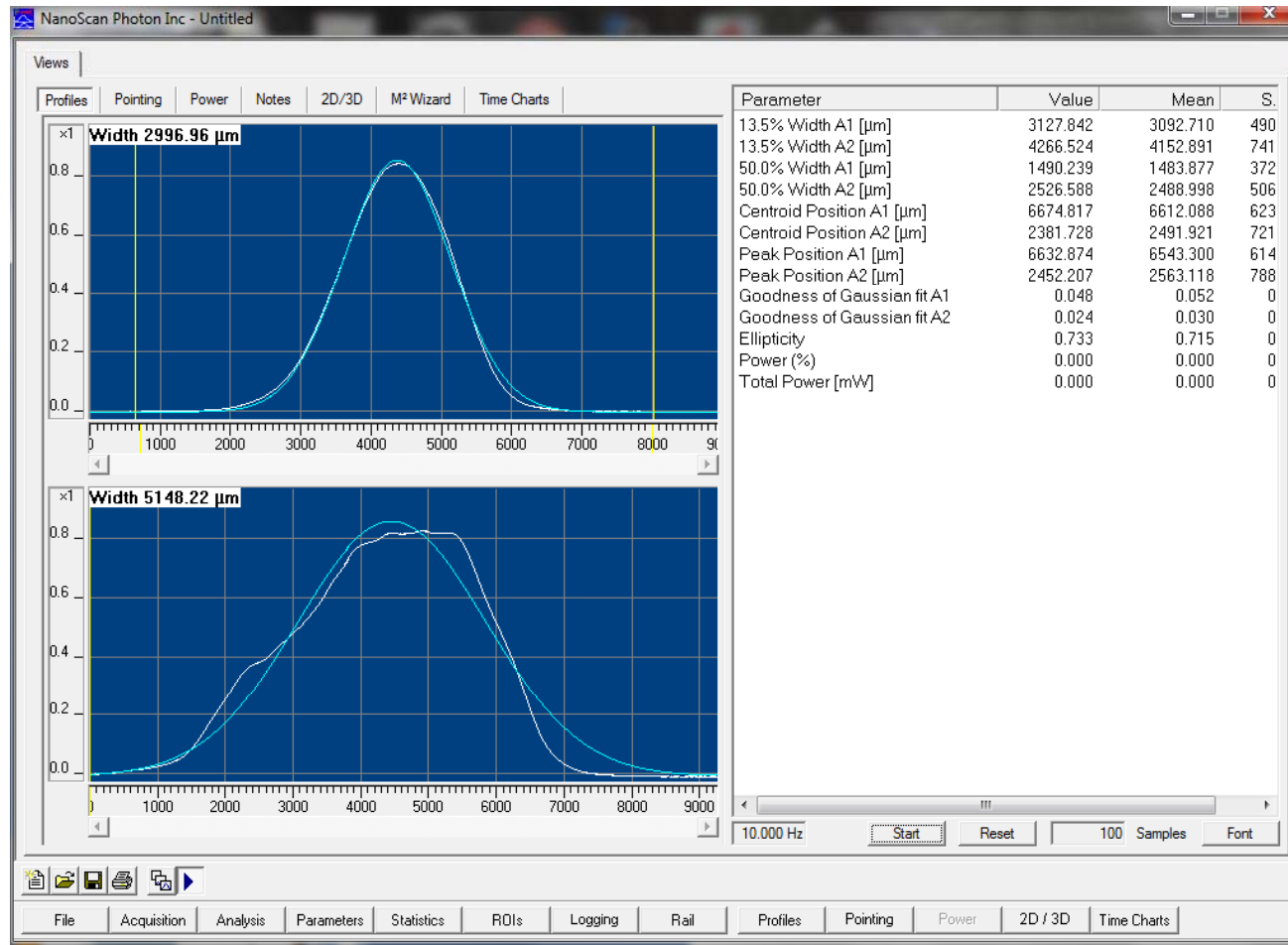


4 inches front WFS B iris not SO closed (allowing possible path drift)

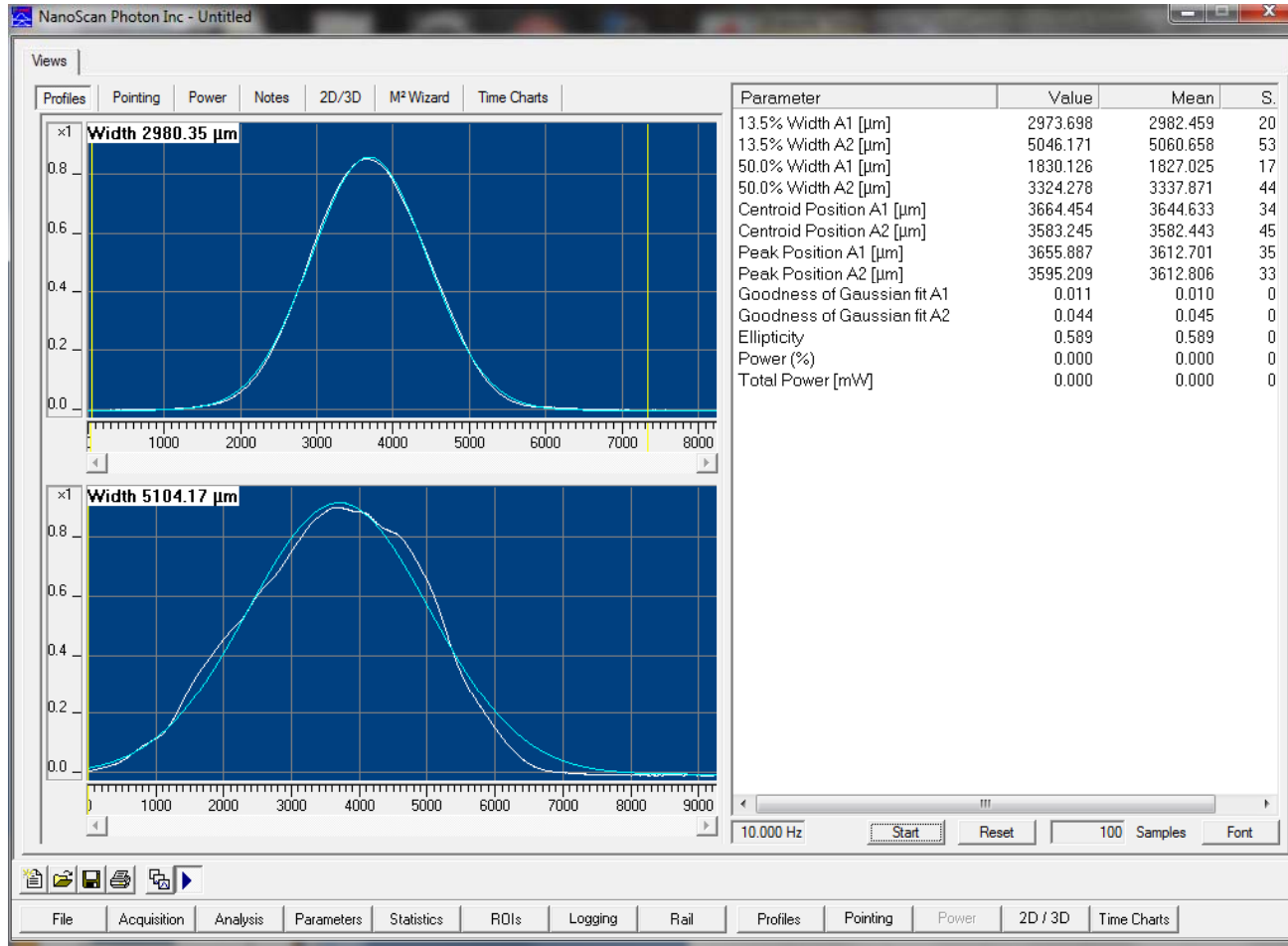


WFS A position, with iris as set for WFS

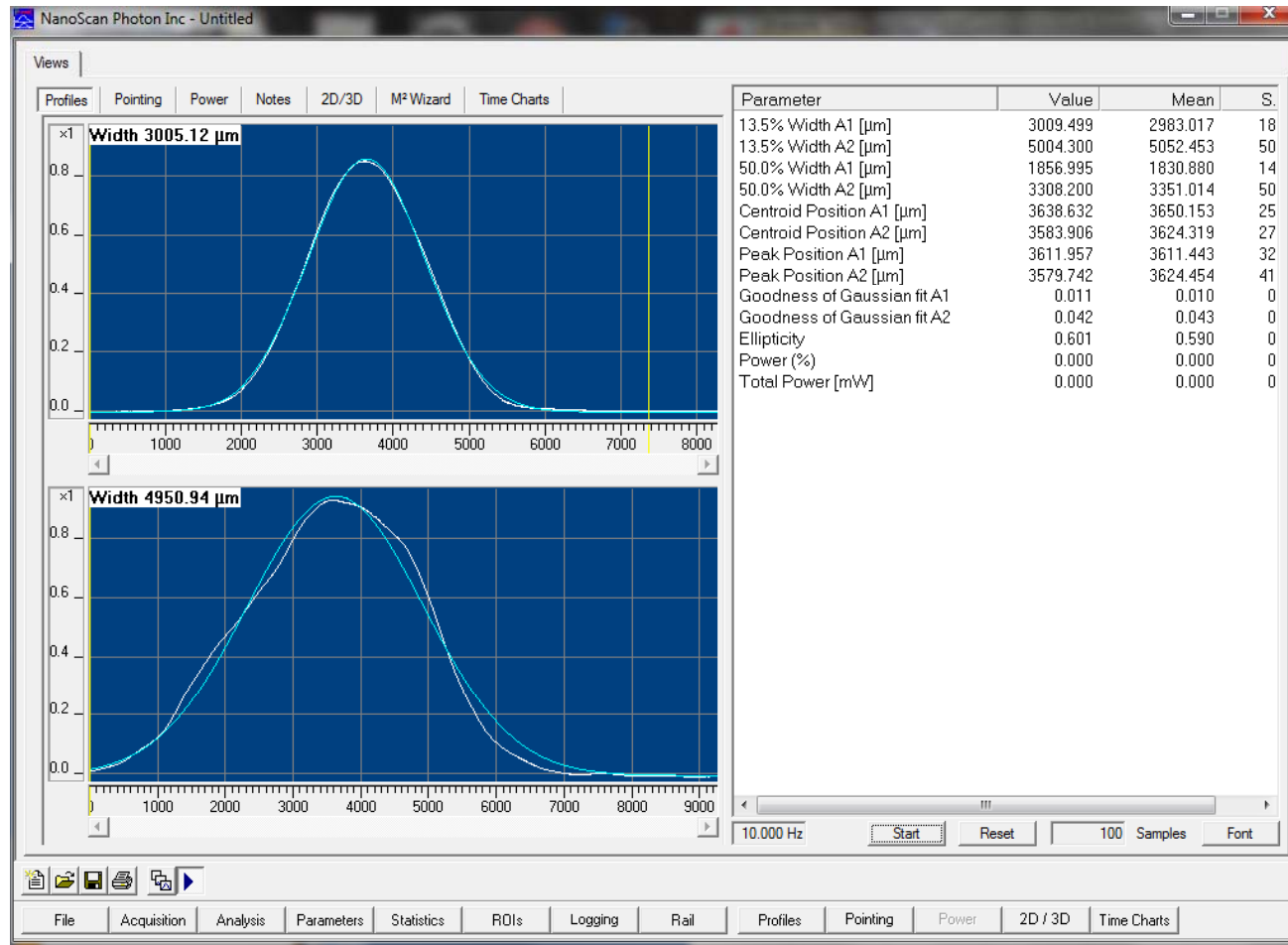
B



WSF A position iris not so close



WFS A position iris open



4 inches front WFS B last iris and faraday configuration

