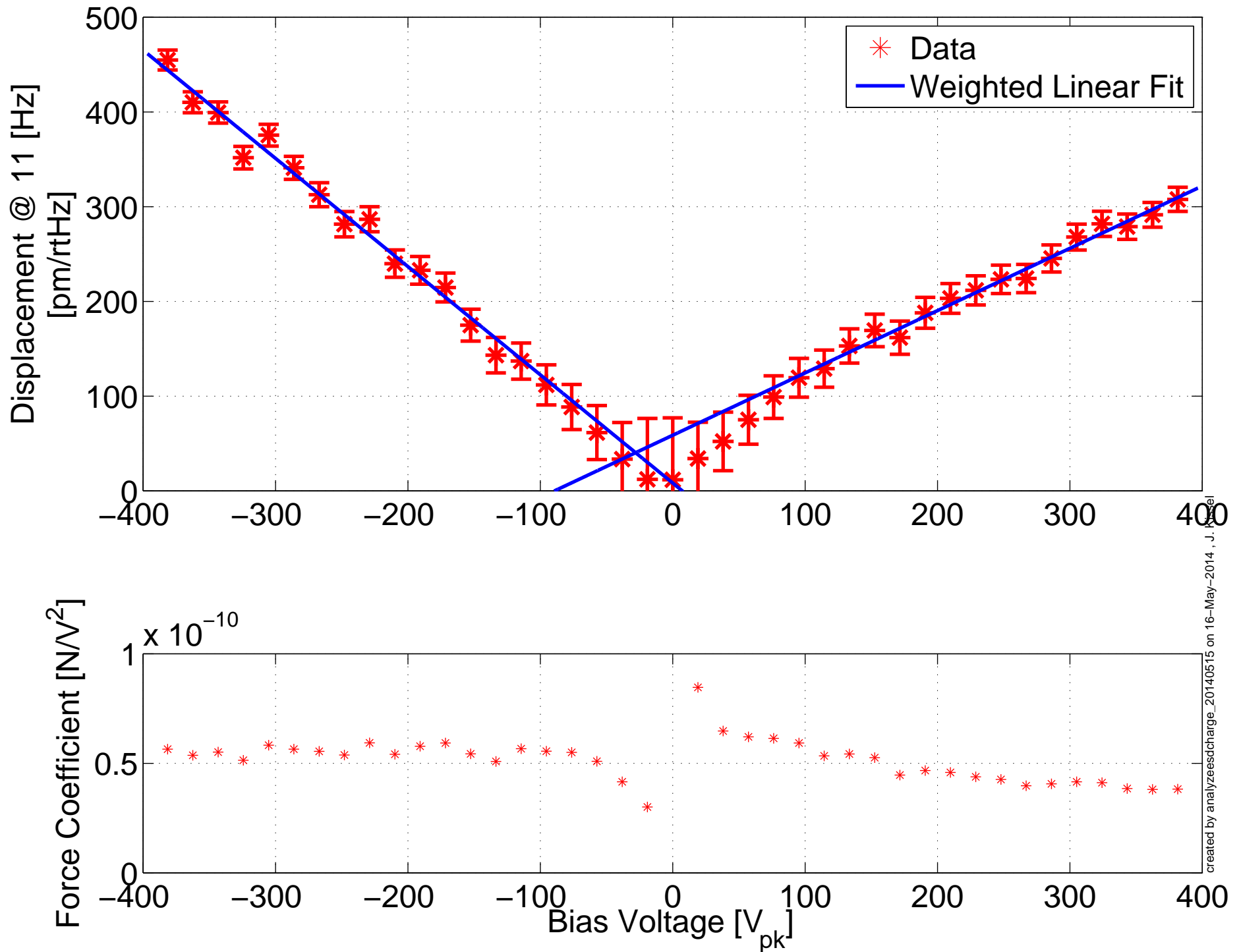
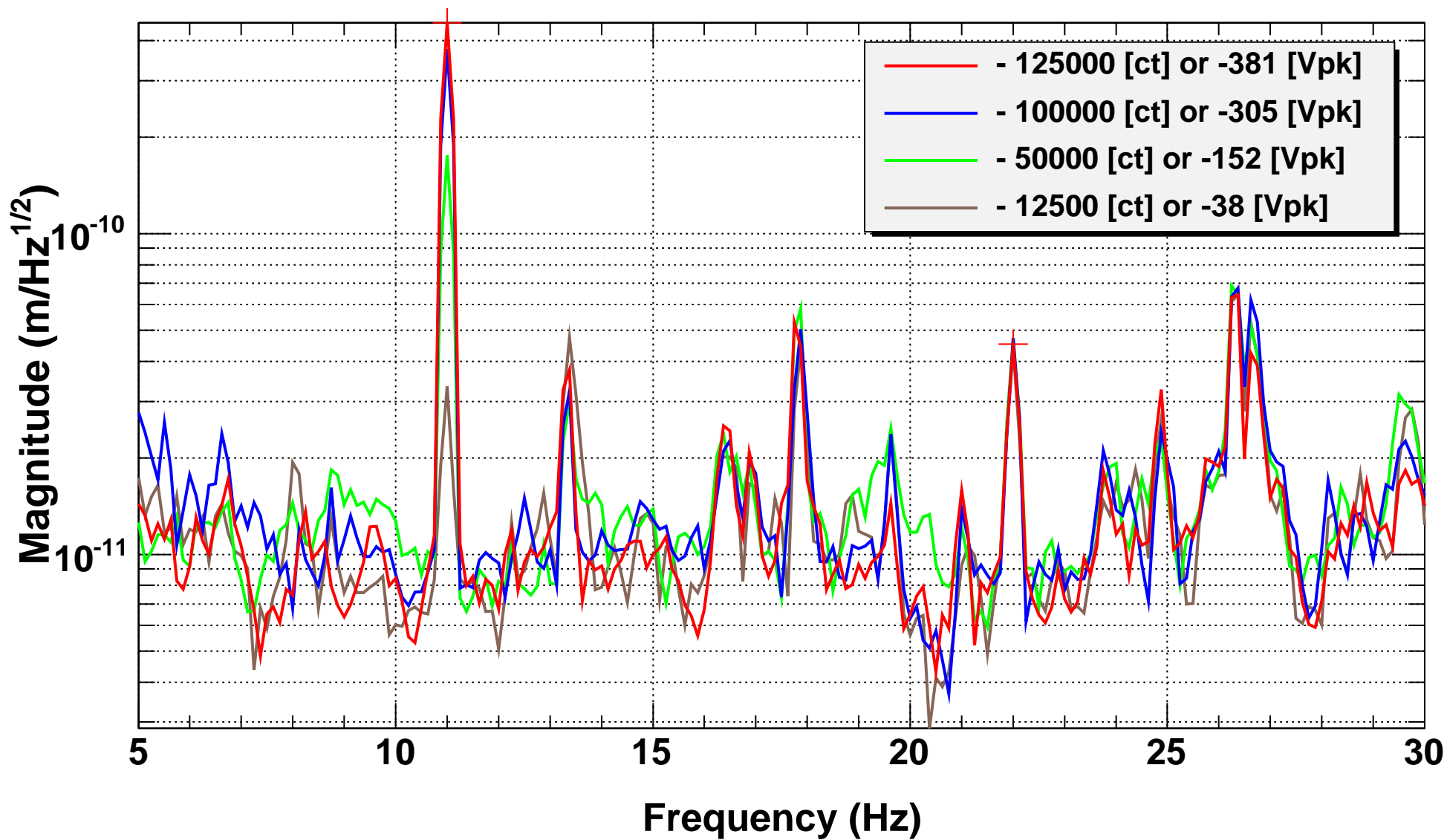


H1SUSE IMX, 2014-05-16  
Effective Bias Voltage = -27.99 V



# H1 X-ARM Cavity Length ASD, ETMX ESD Drive

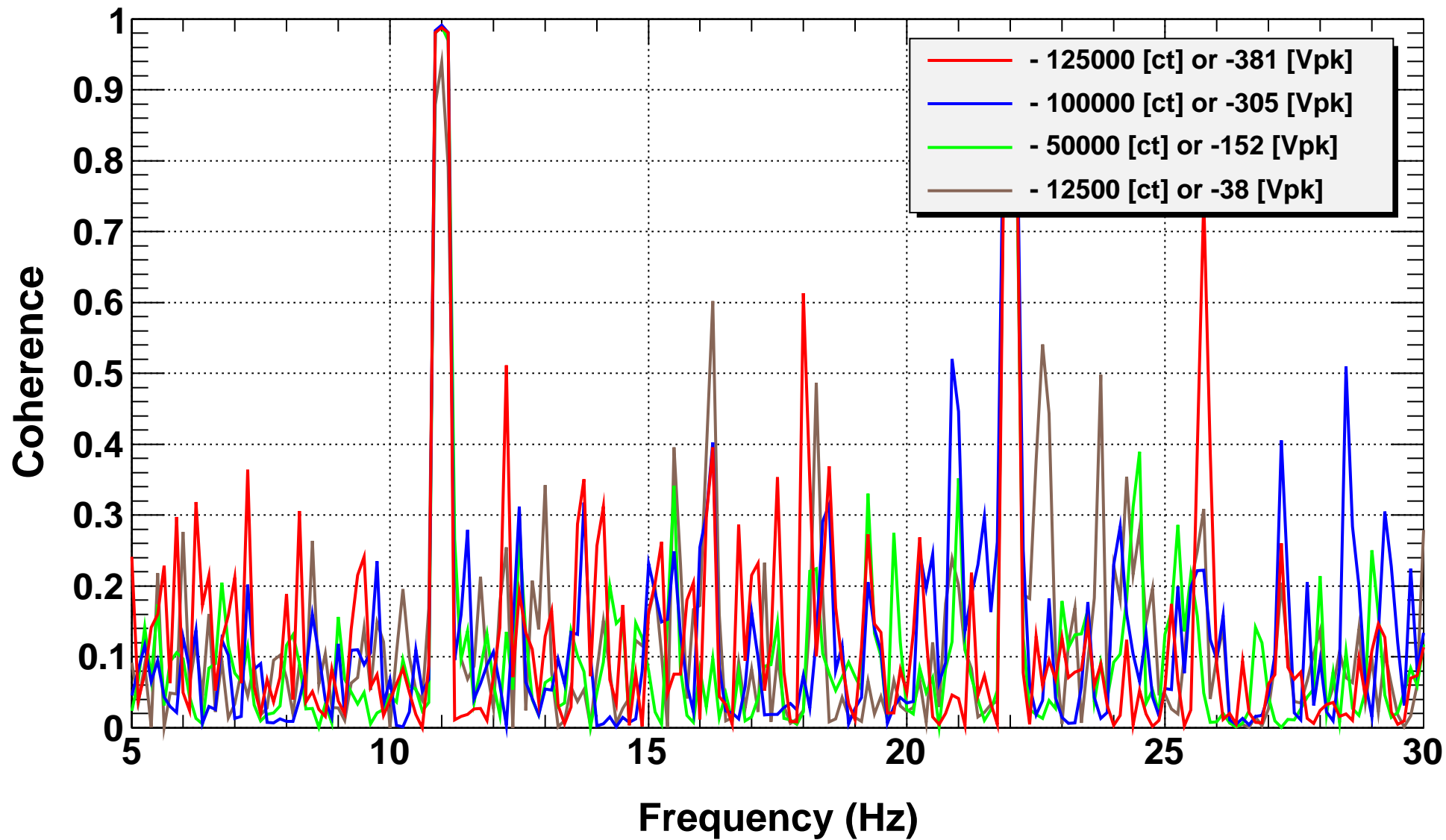


\*T0=16/05/2014 02:40:19

Avg=10

BW=0.1875

# Cavity Length / ESD Drive Coherence

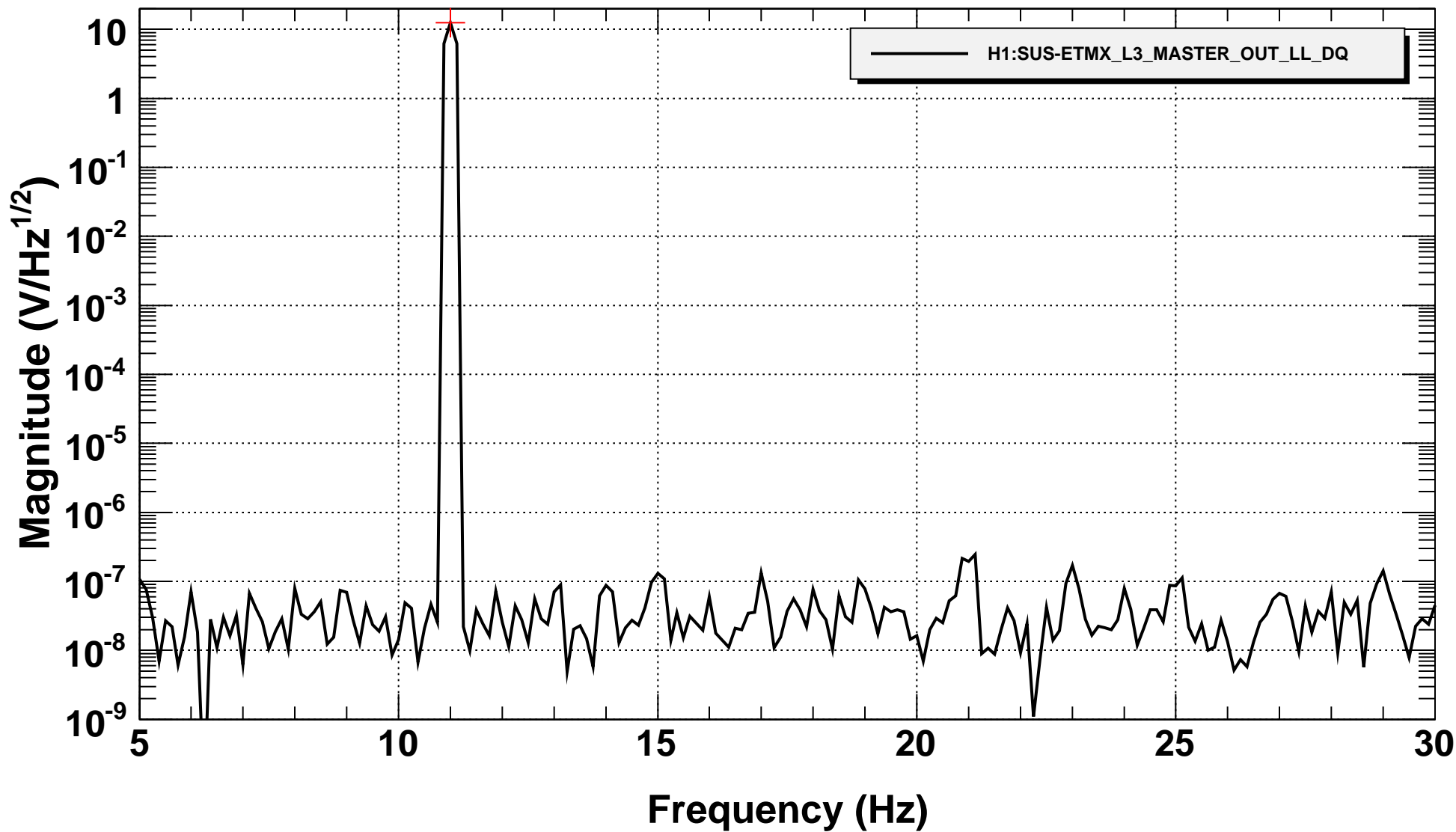


\*T0=16/05/2014 02:40:19

Avg=10

BW=0.1875

**Requested Drive Voltage @ DAC ASD, One Quadrant**



T0=16/05/2014 04:10:53

Avg=10

BW=0.1875