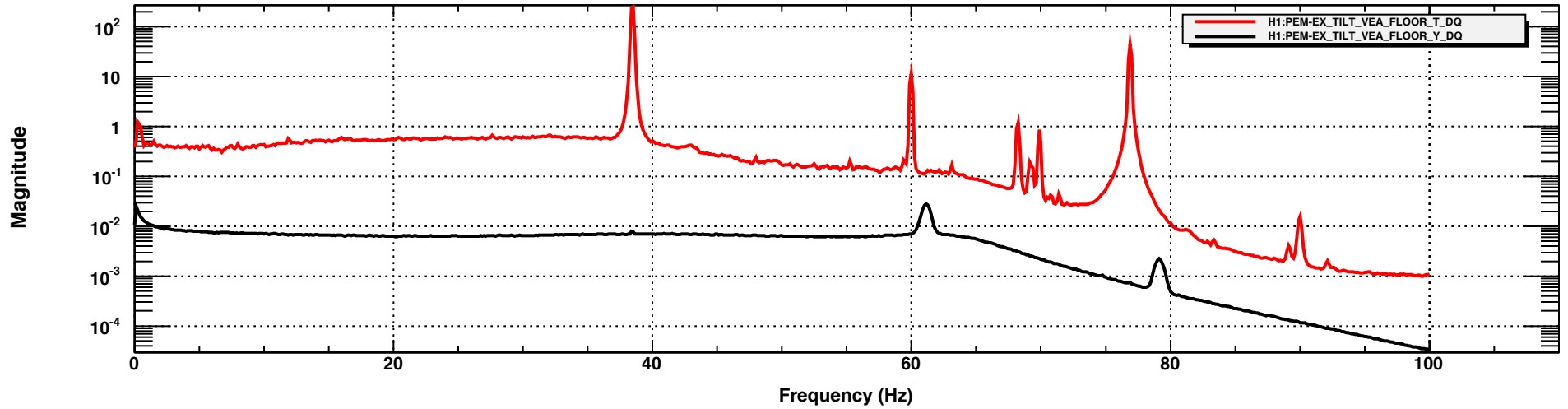


BLACK: disconnected channel in h1issex, note IO box fan peaks at 61 and 79 and smaller switcher fan at 39 and 77Hz, RED: magnetometer on switcher to highlight fan frequencies

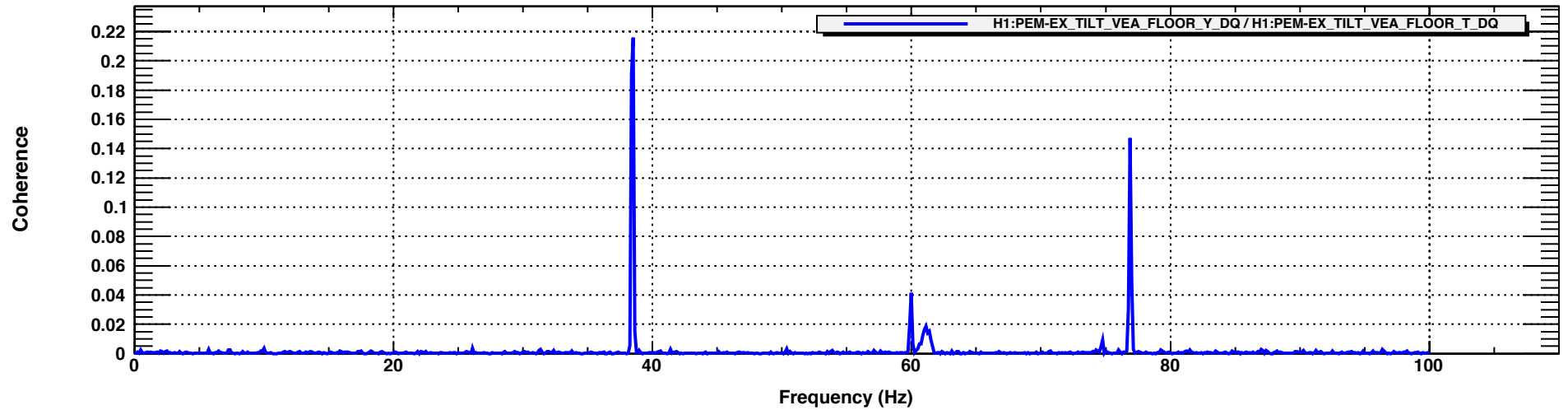


T0=14/05/2014 10:26:07

Avg=2000

BW=0.1875

Coherence between black and red, the disconnected h1issex channel and the magnetometer on the switcher to show fan peaks (identified by covering fan intake)



T0=14/05/2014 10:26:07

Avg=2000

BW=0.1875