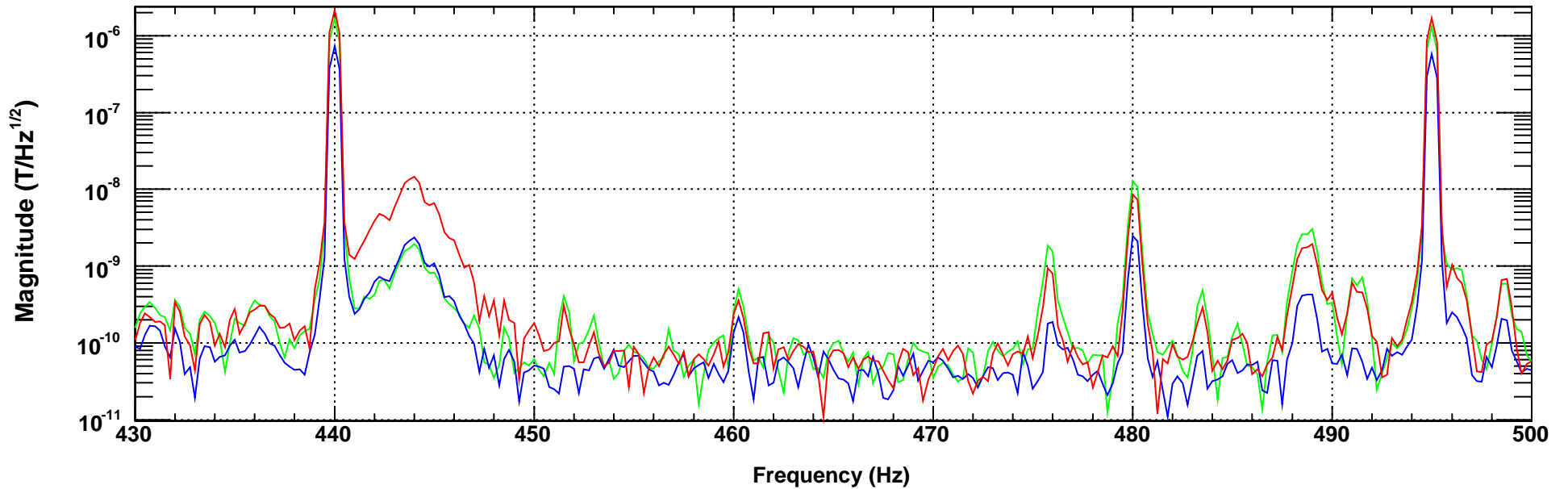


Magnetometer x,y,z signals - 445 Hz: field from switcher, 440 & 495 Hz: field injected at switcher location

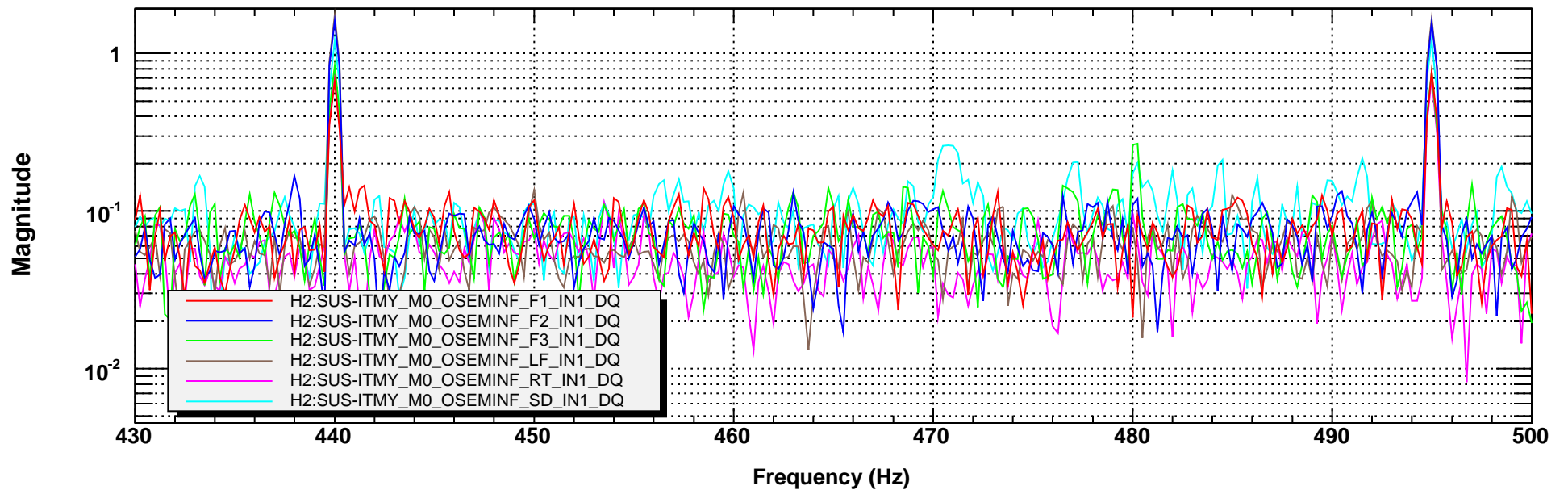


T0=17/08/2011 03:23:29

Avg=2

BW=0.374999

Injected fields visible on working channels (OSEM). Switcher signal estimated to be at 0.01 counts



T0=17/08/2011 03:23:29

Avg=2

BW=0.374999