

# GND STS and PEM MIC Channels Coherence

Nathaniel Strauss – Carleton College

# General Overview

The logbook entry at the first link below mentioned a moderately pronounced peak between 8 and 11 Hz. The plots from the coherence tool (at 100mHz bandwidth) show a few peaks between 5 and 9 Hz. The full results can be seen at the second link.

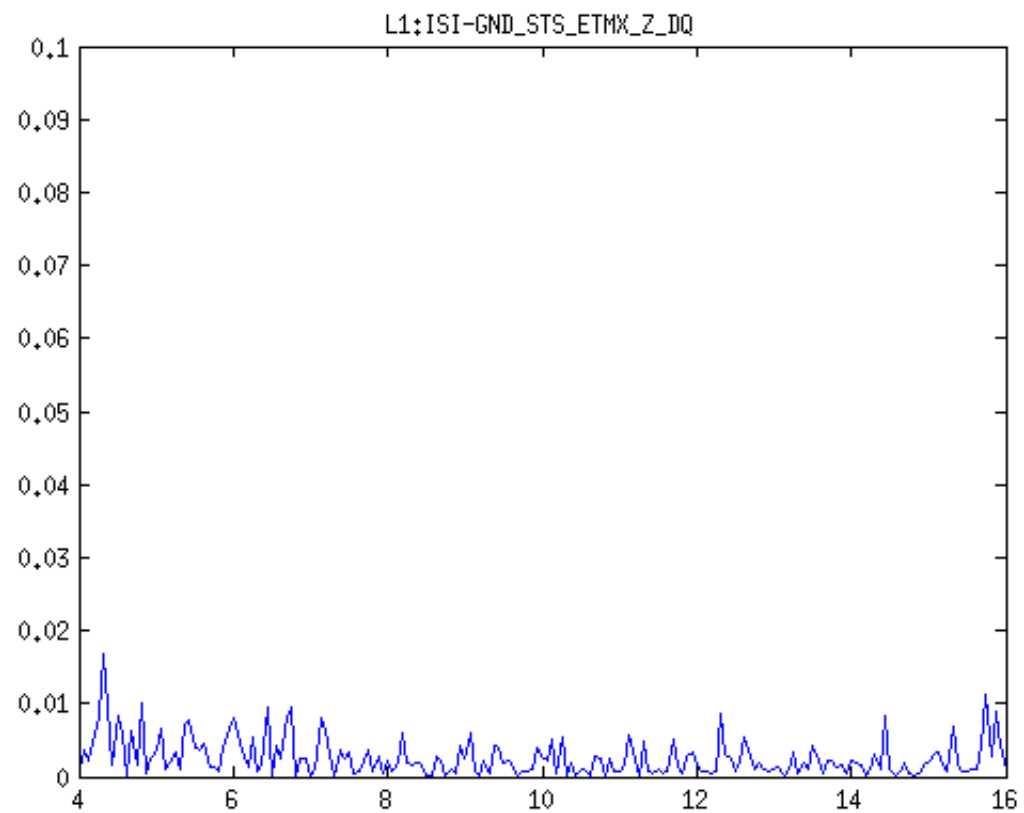
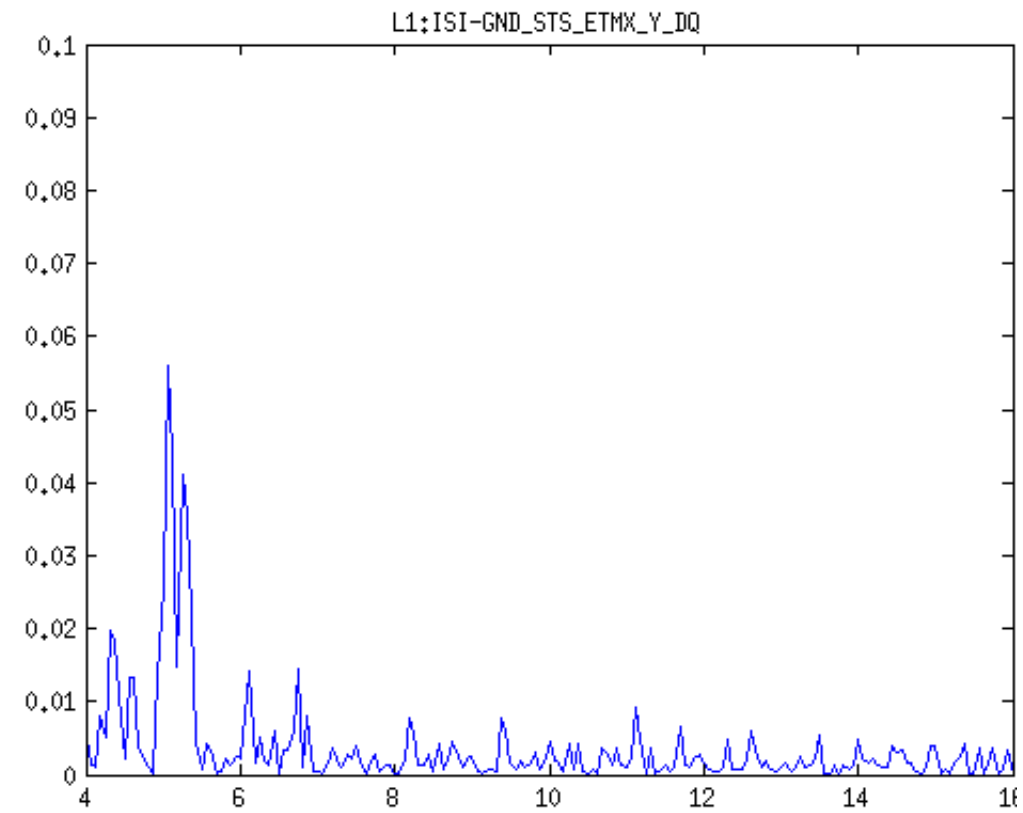
<https://alog.ligo-wa.caltech.edu/aLOG/index.php?callRep=13138>

[https://ldas-jobs.ligo-la.caltech.edu/~nathanie.l.trauss/HIFOX/LineSearch/L1\\_HIFOX\\_10\\_23July\\_1hr\\_lock\\_webpage/](https://ldas-jobs.ligo-la.caltech.edu/~nathanie.l.trauss/HIFOX/LineSearch/L1_HIFOX_10_23July_1hr_lock_webpage/)

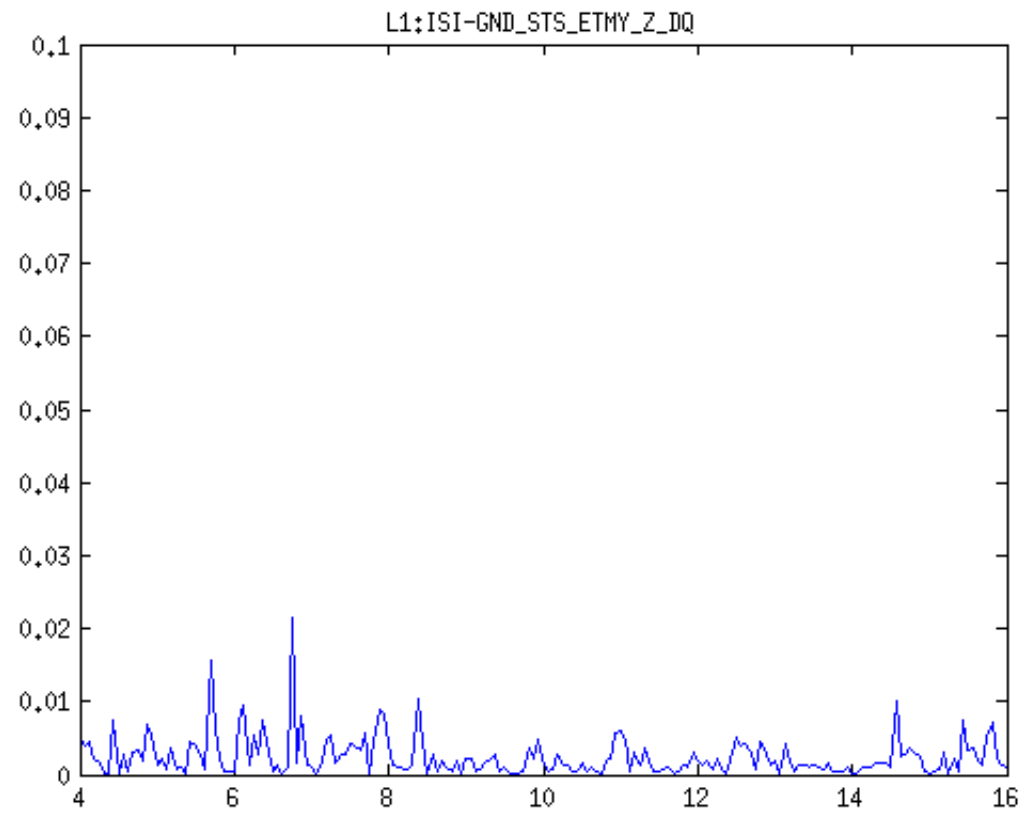
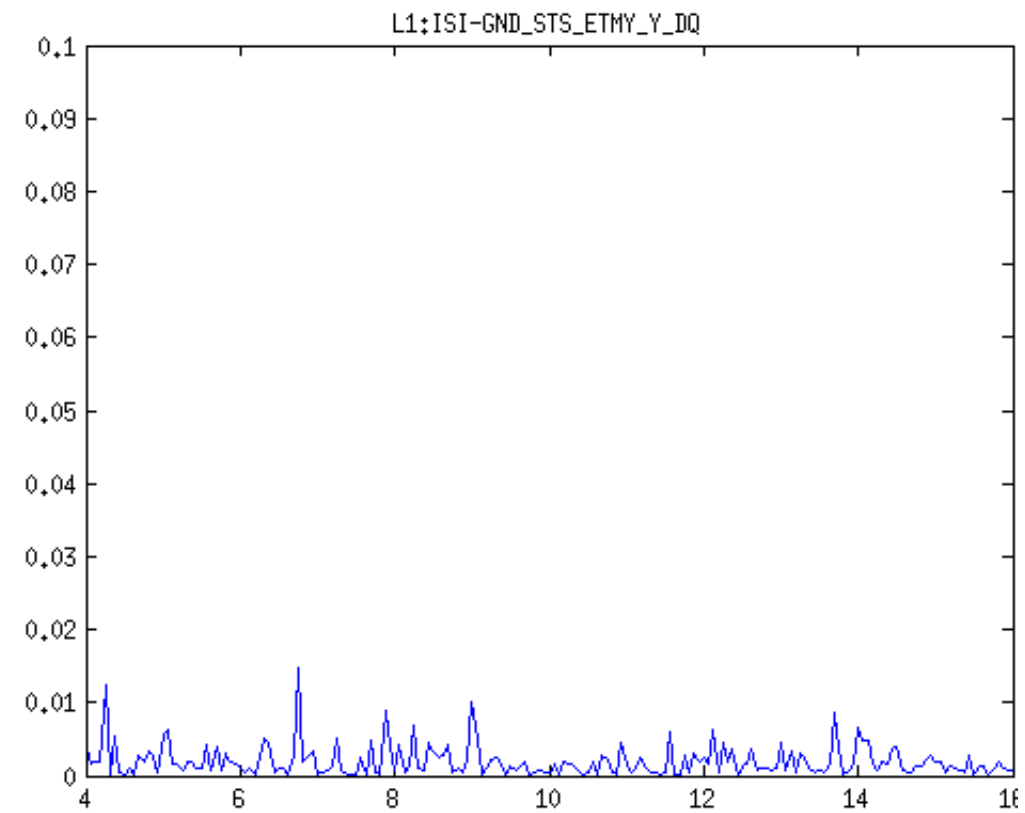
# GND SDS Channels

- Two of the plots show peaks at about 7 and 7.5 Hz
- A few plots show a few weaker peaks between 4 and 7 Hz

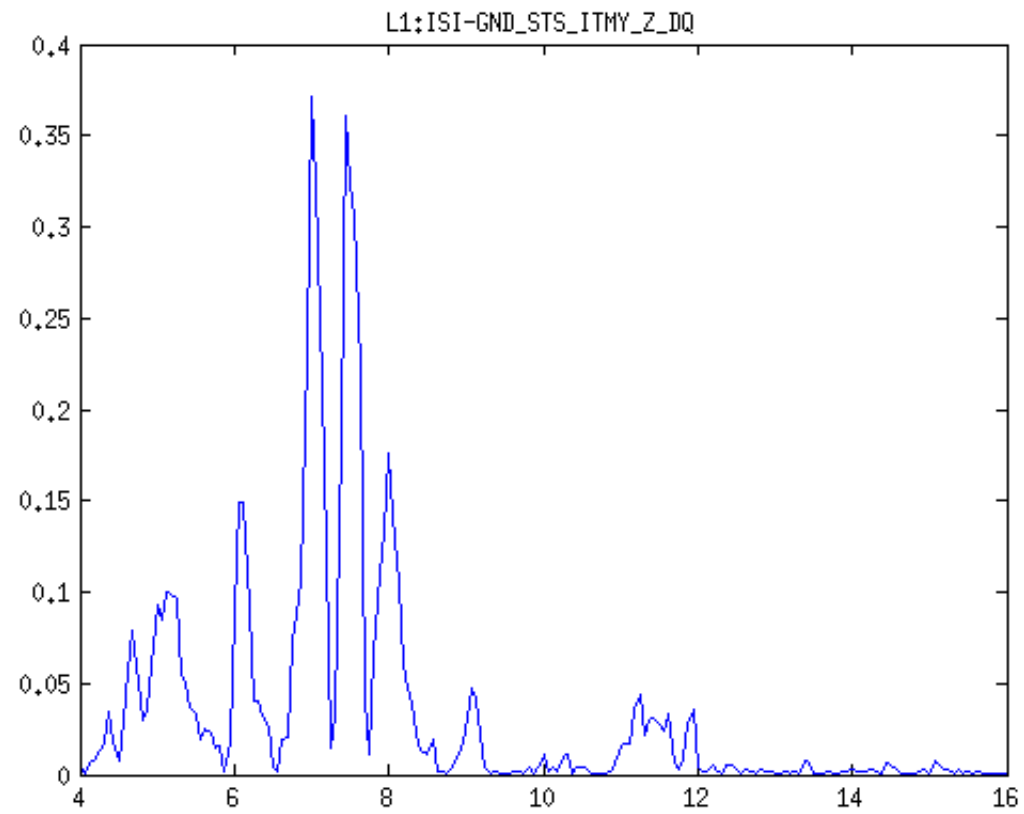
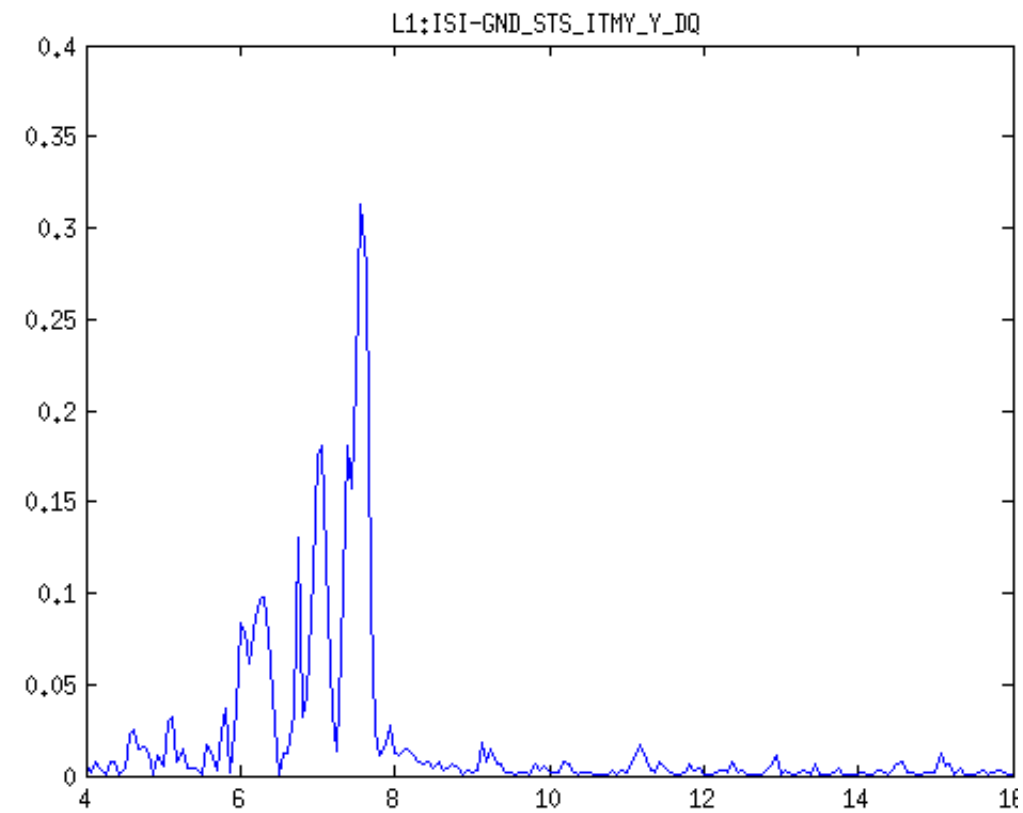
# GND SDS Channels



# GND SDS Channels



# GND SDS Channels



# PEM MIC Channels

- These lines are a little weaker than those previous
- There are several lines between 5.5 and 8 Hz

# PEM MIC Channels

