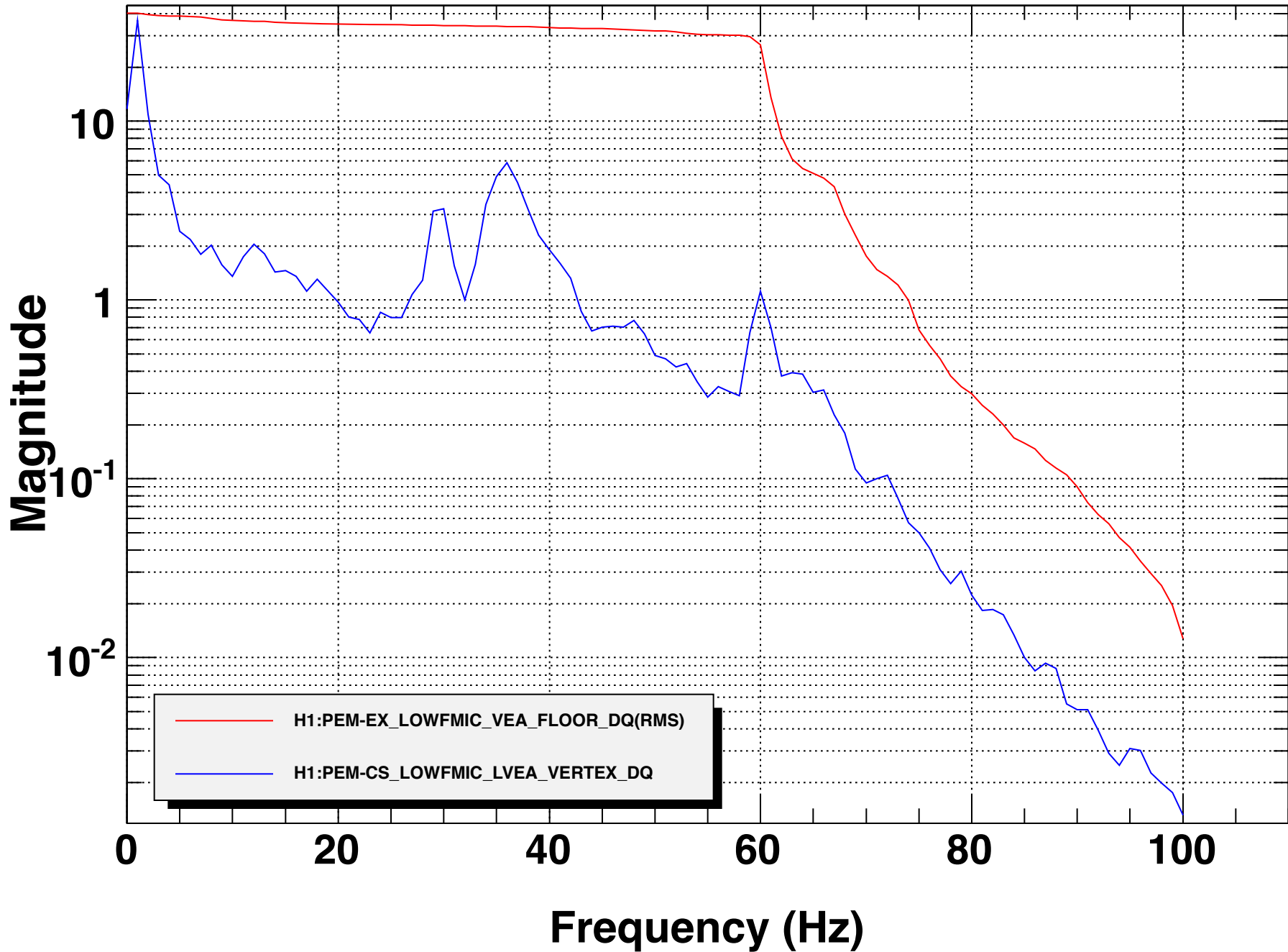


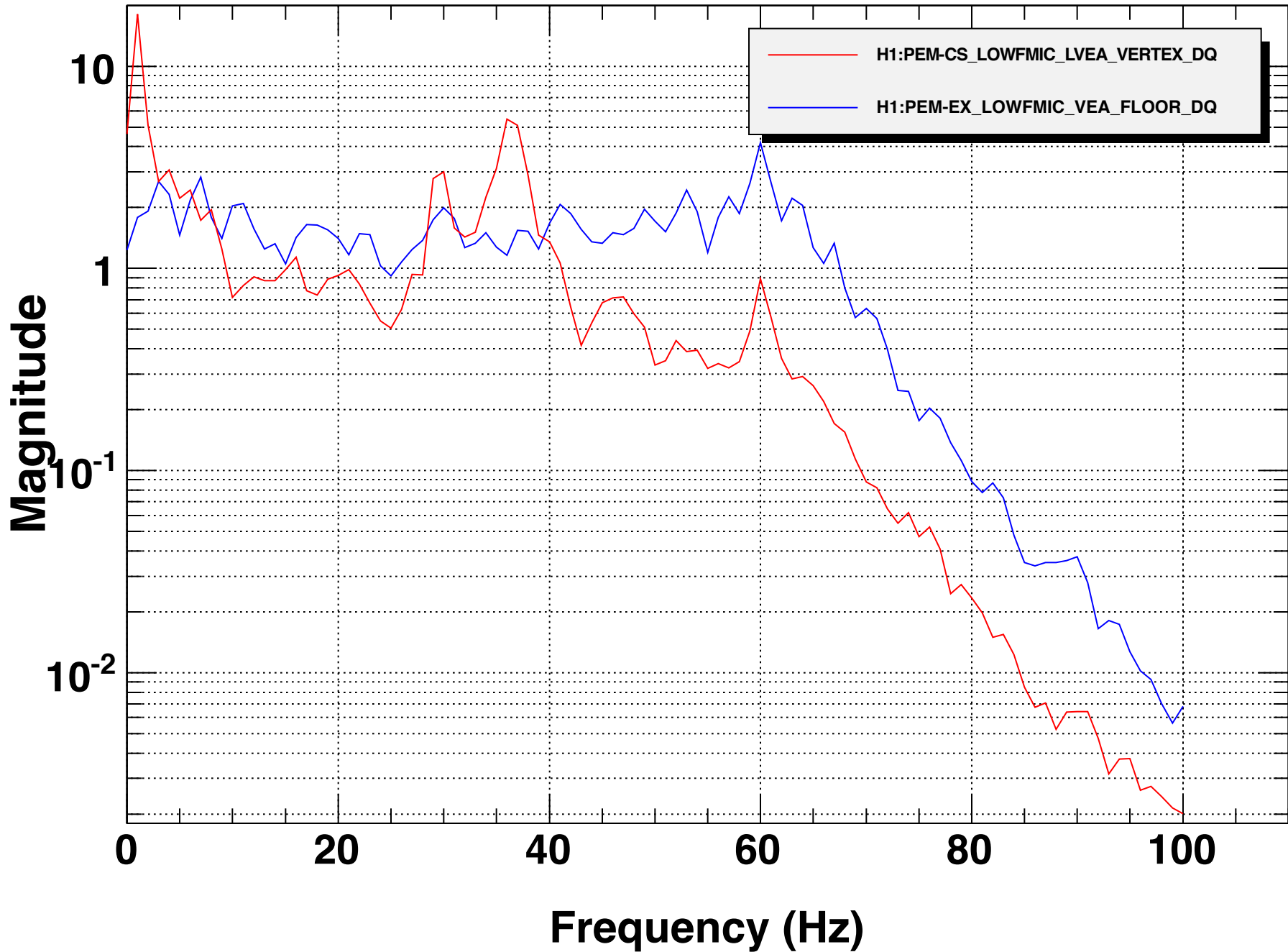
Low Frequency MIC: S1400299 with DAC: B



T0=10/09/2014 17:32:36.04296 $\Delta v_g=10$

BW=1.5

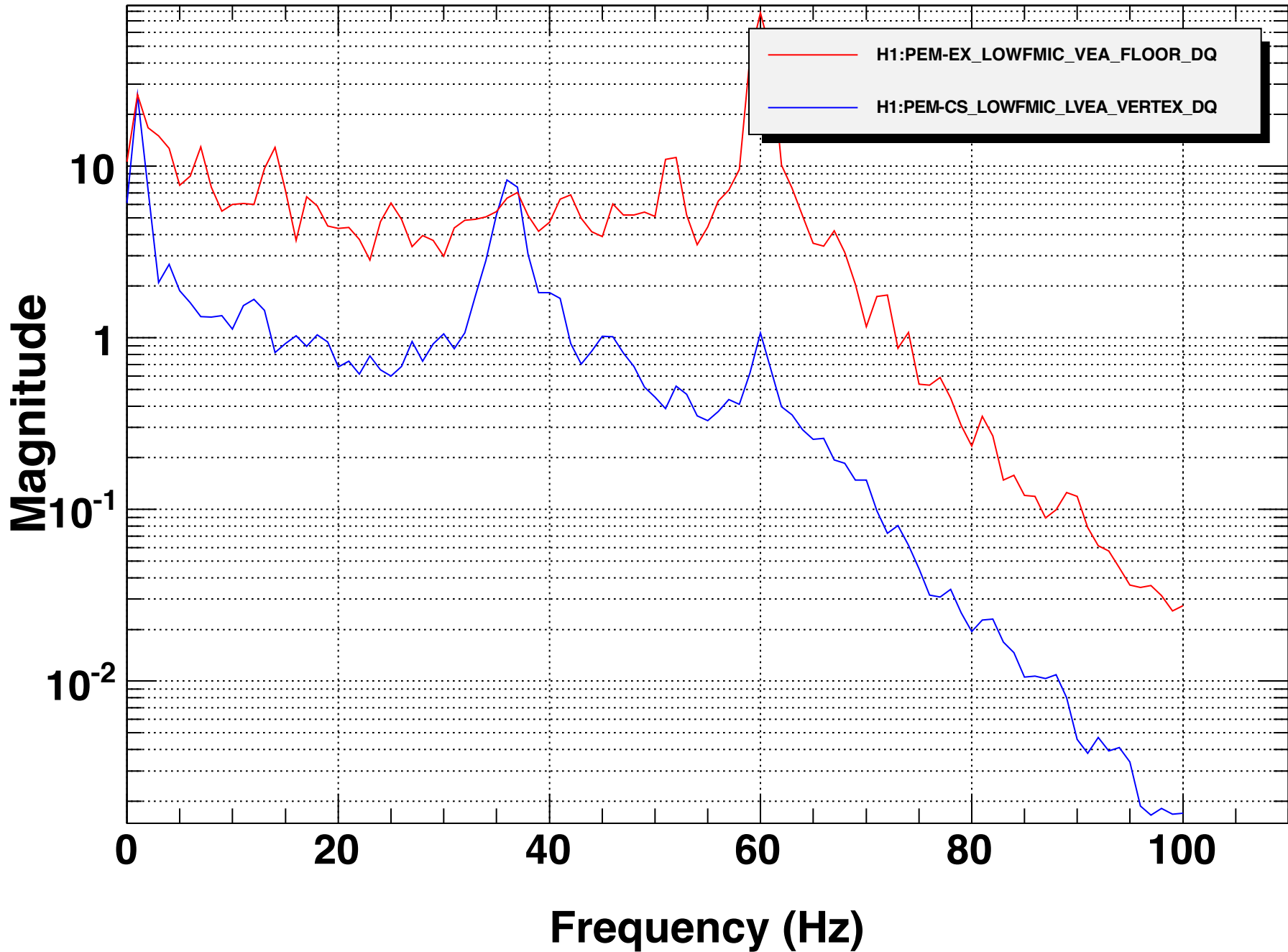
Low Frequency MIC: S1400299 with DAC: G



T0=10/09/2014 17:25:07.01953 Avg=10

BW=1.5

Low Frequency MIC: S1400299 with DAC: Y

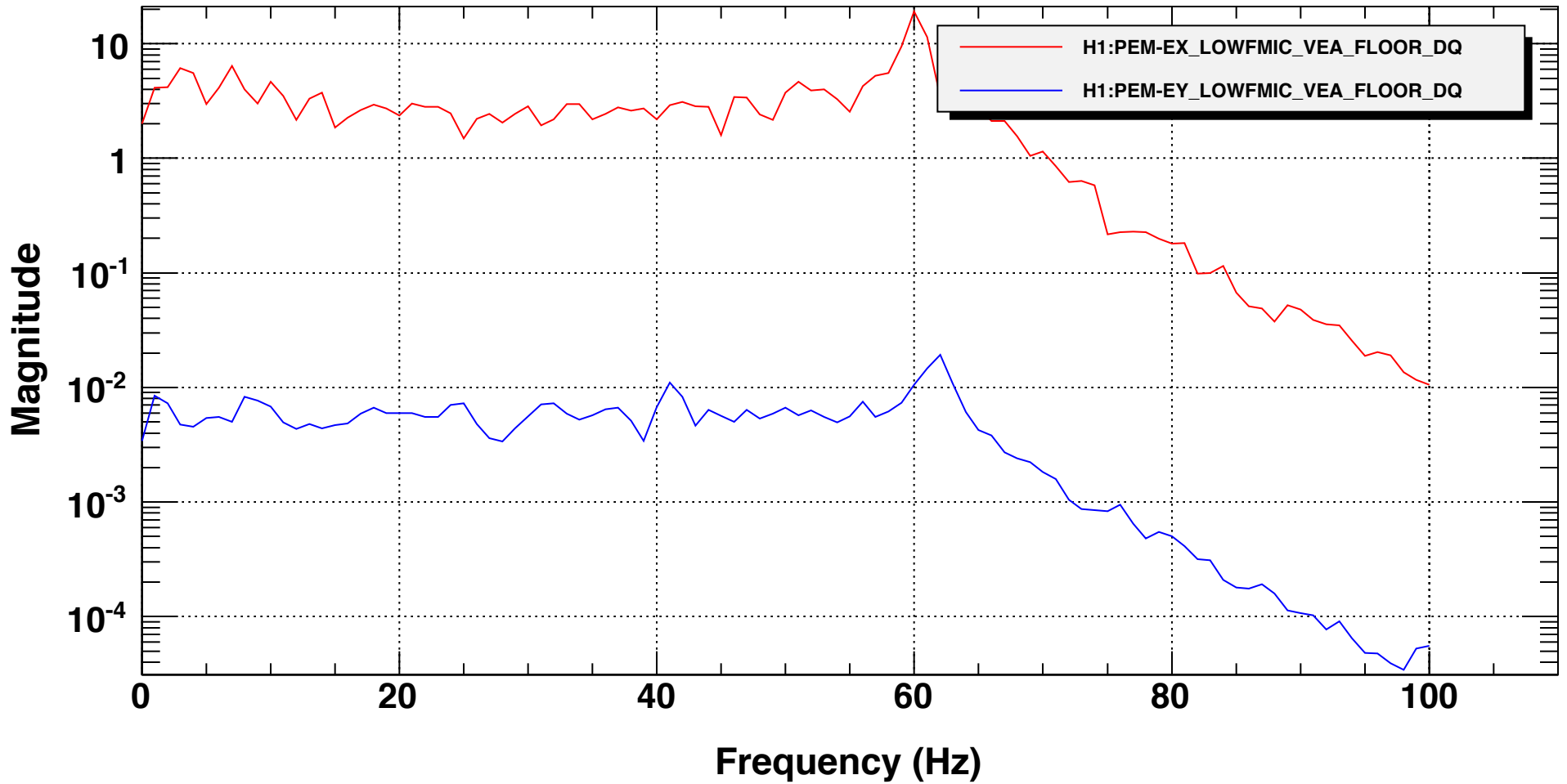


T0=10/09/2014 17:28:42

Avg=10

BW=1.5

Low Frequency MIC: S1400300 with DAC: B

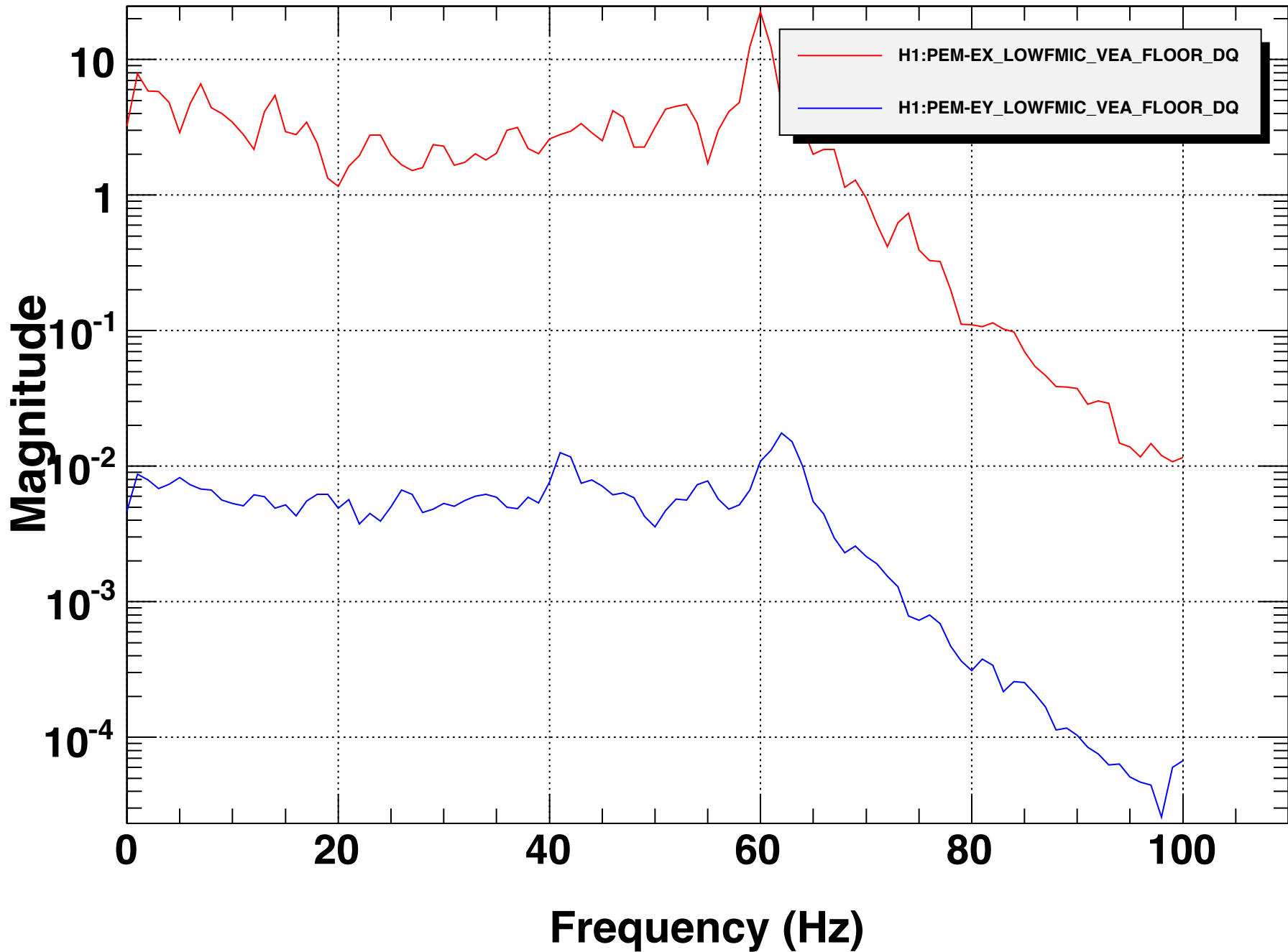


T0=10/09/2014 16:34:46

Avg=10

BW=1.5

Low Frequency MIC: S1400300 with DAC: G

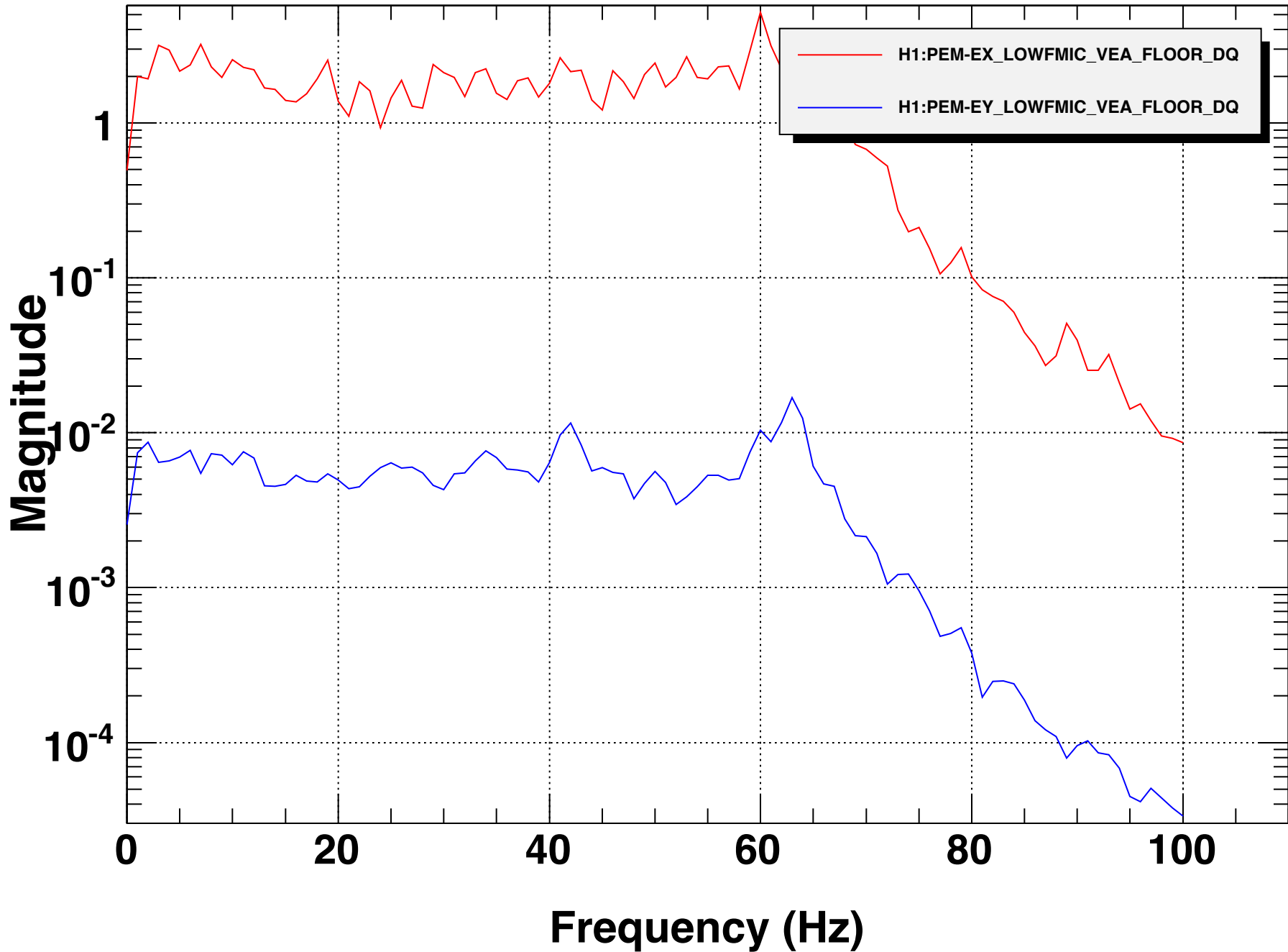


T0=10/09/2014 16:45:46

Avg=10

BW=1.5

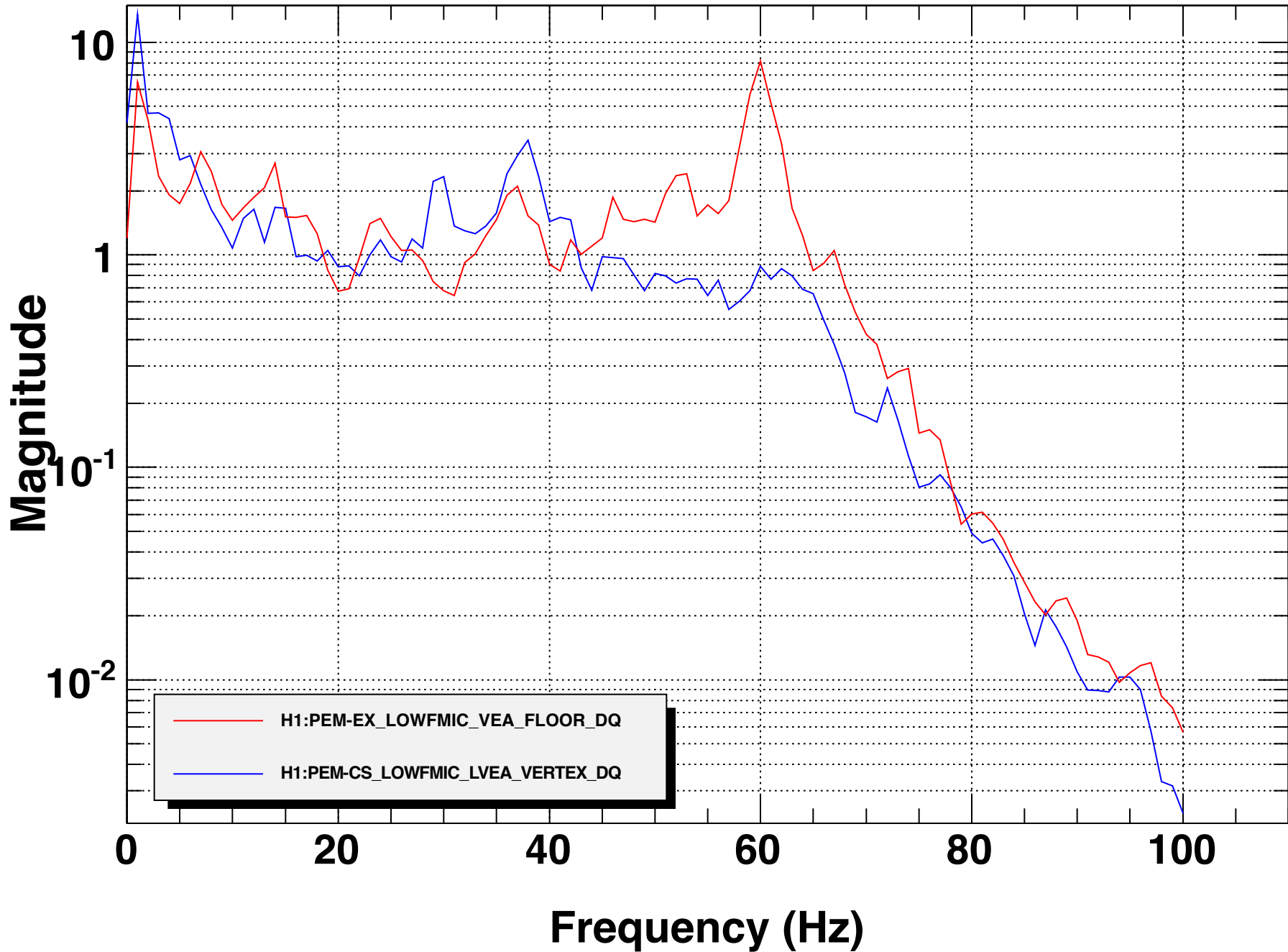
Low Frequency MIC: S1400300 with DAC: Y



T0=10/09/2014 16:49:43.023437 Avg=10

BW=1.5

Low Frequency MIC: S1400302 with DAC: B

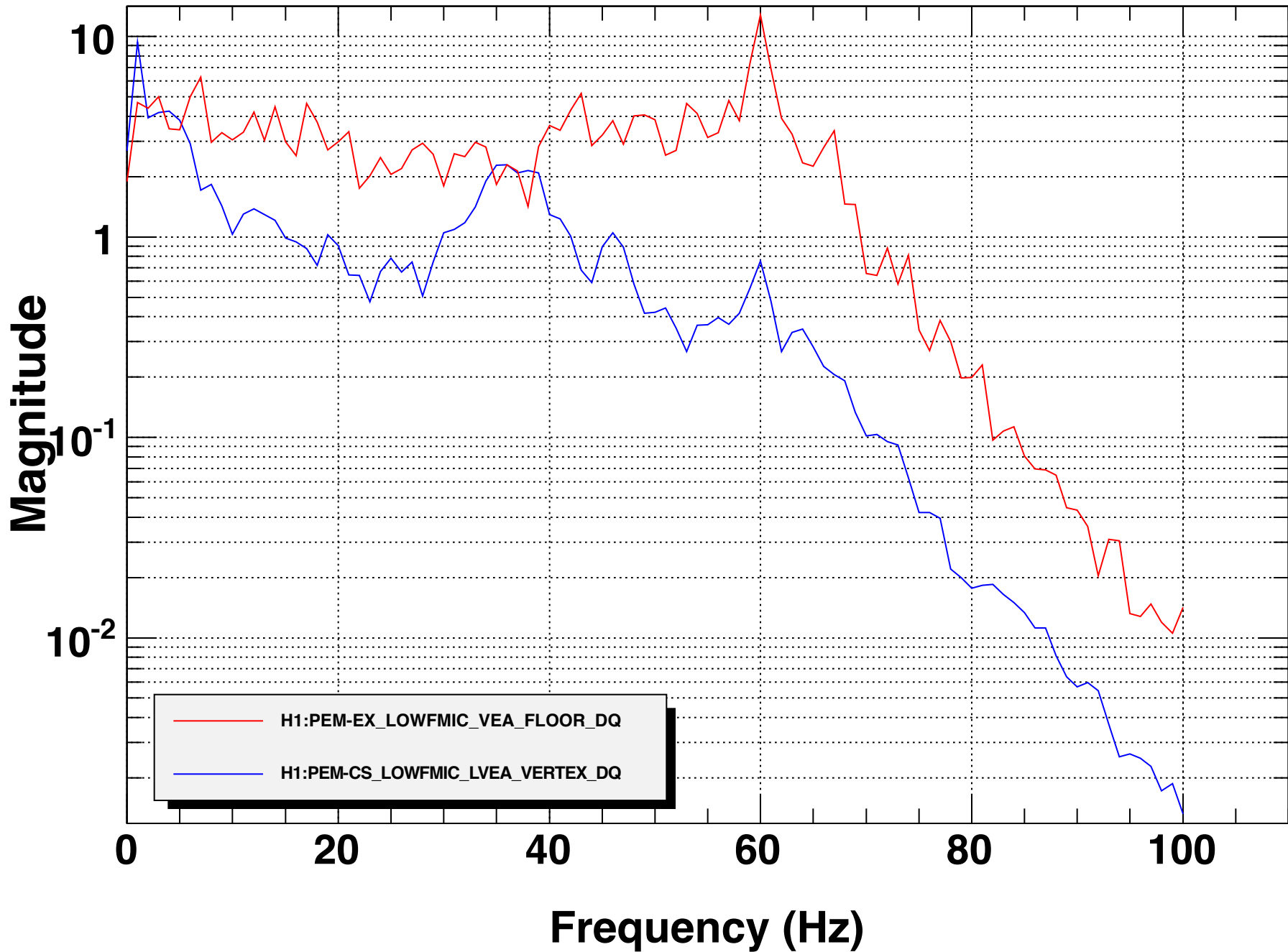


T0=10/09/2014 17:35:58

Avg=10

BW=1.5

Low Frequency MIC: S1400302 with DAC: G

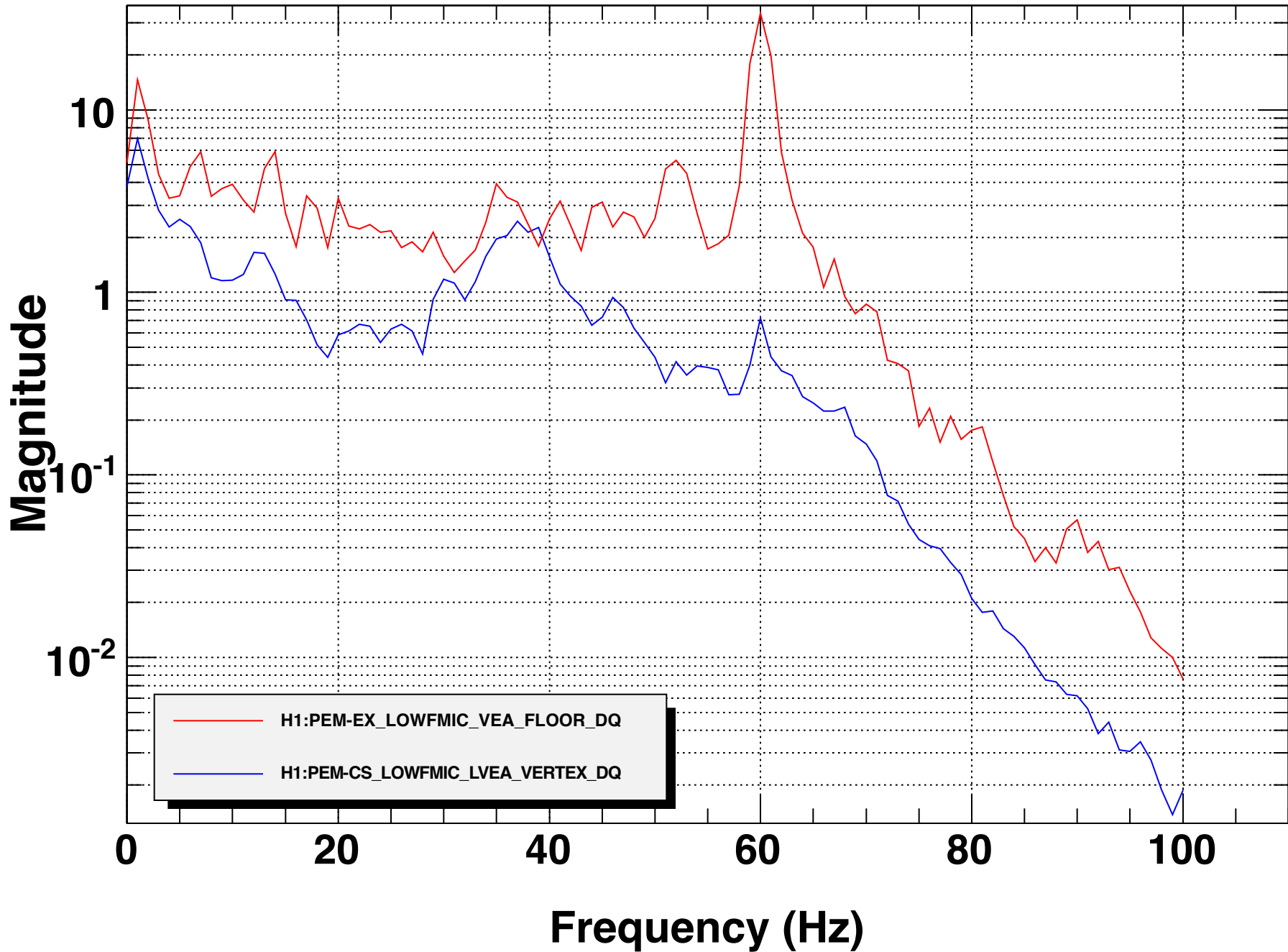


T0=10/09/2014 17:39:24

Avg=10

BW=1.5

Low Frequency MIC: S1400302 with DAC: Y



T0=10/09/2014 17:42:41

Avg=10

BW=1.5