

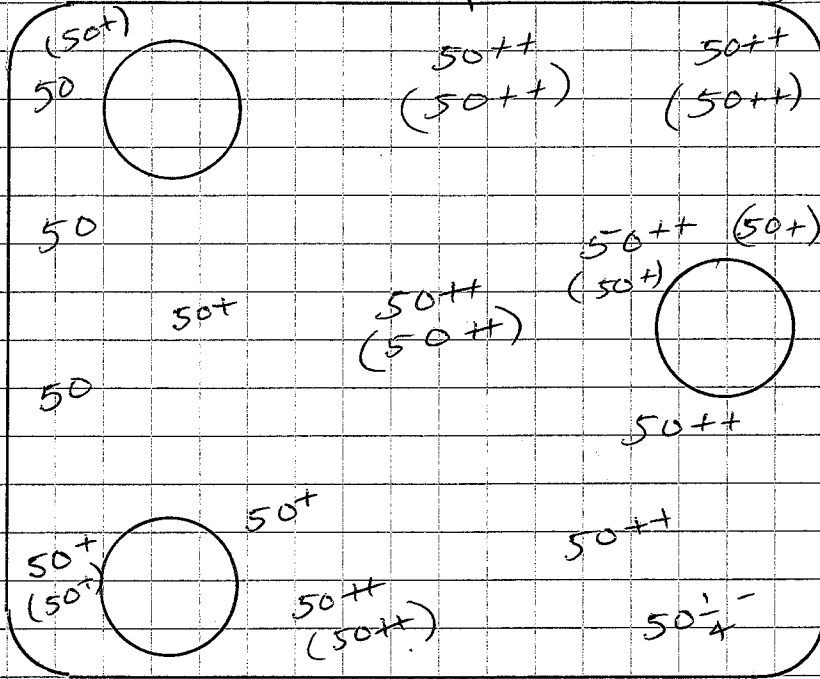
Aug 20

Storage Truss Cont Volume

$$86'' \times 93'' \times 48'' \approx 384,000 \text{ in}^3 = 6300 \text{ l}$$

Aug 17

Assembly #3 Stage 0 Level Check



- 50 = +2.5 mils
- 50+ = 0
- 50++ = +2.5 mils
- 50 1/4 = -5.0 "