

Photodiode Resonant Circuit

Low Noise RF Amp

High Power RF Amp

Bias Voltage

RF Notch

RF High-Pass

DC Low-Pass

DC Amp 0-100kHz

Front Panel

RF OUT

DC OUT

Compensation Cap

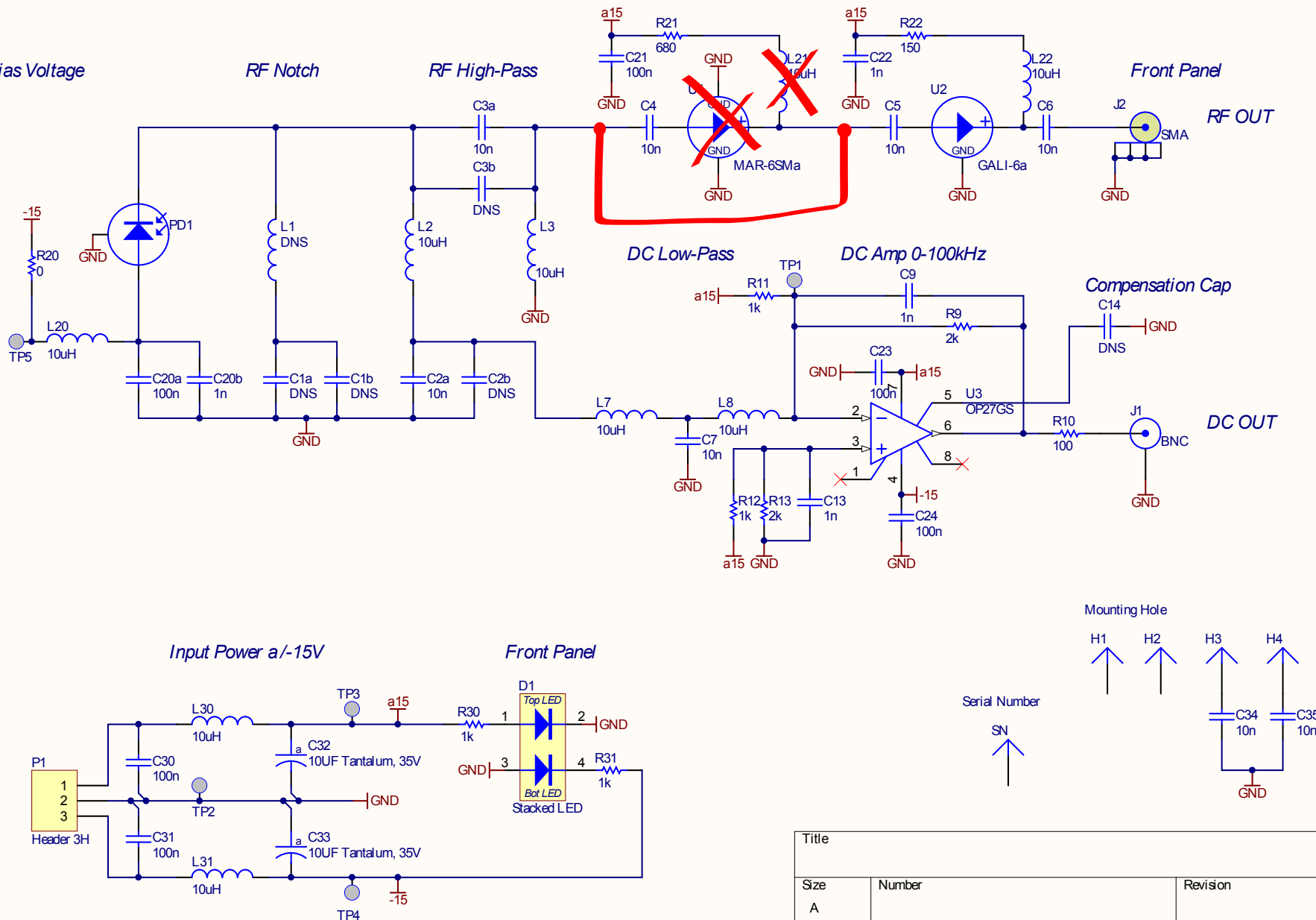
Input Power a/-15V

Front Panel

Mounting Hole

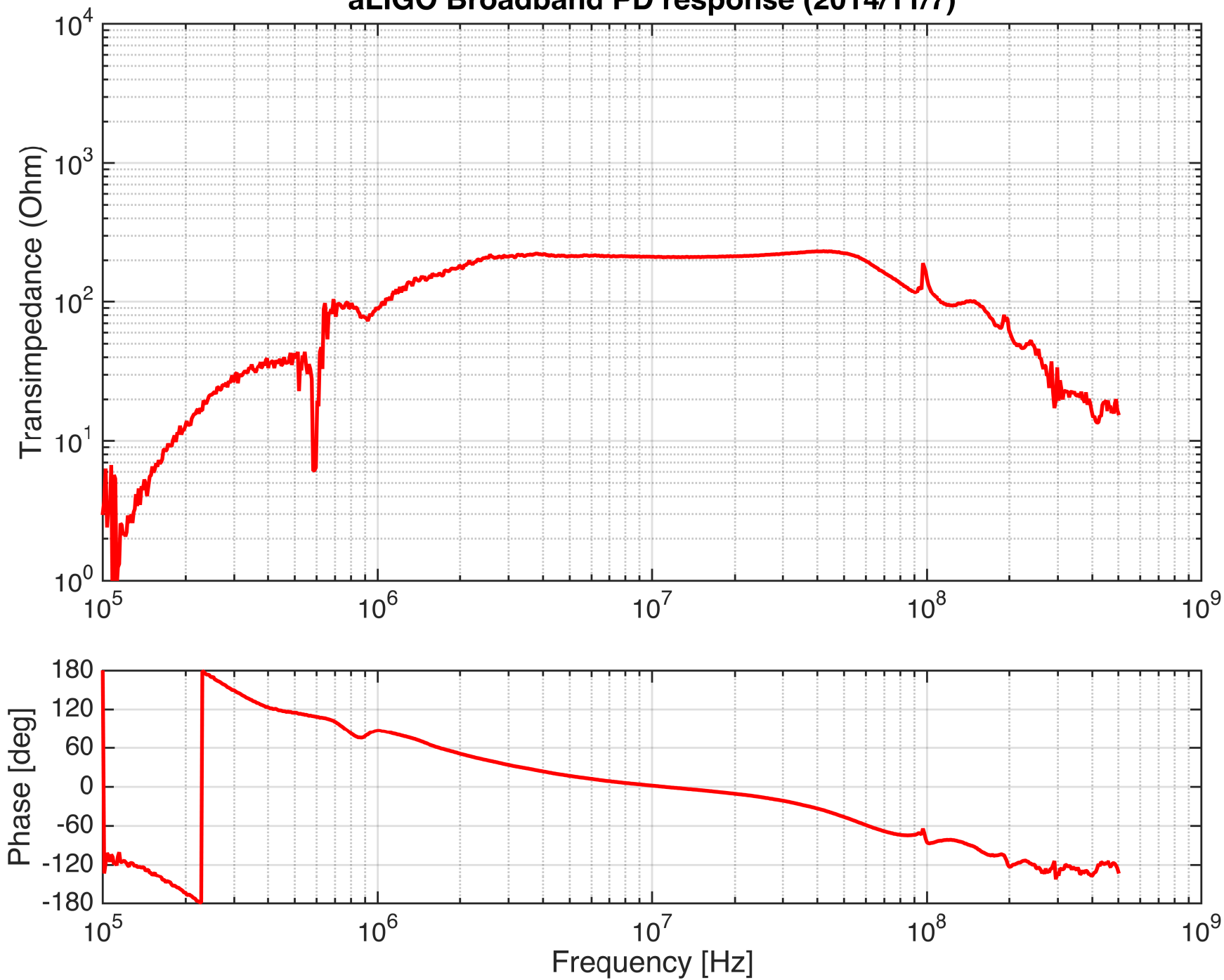
Serial Number

SN

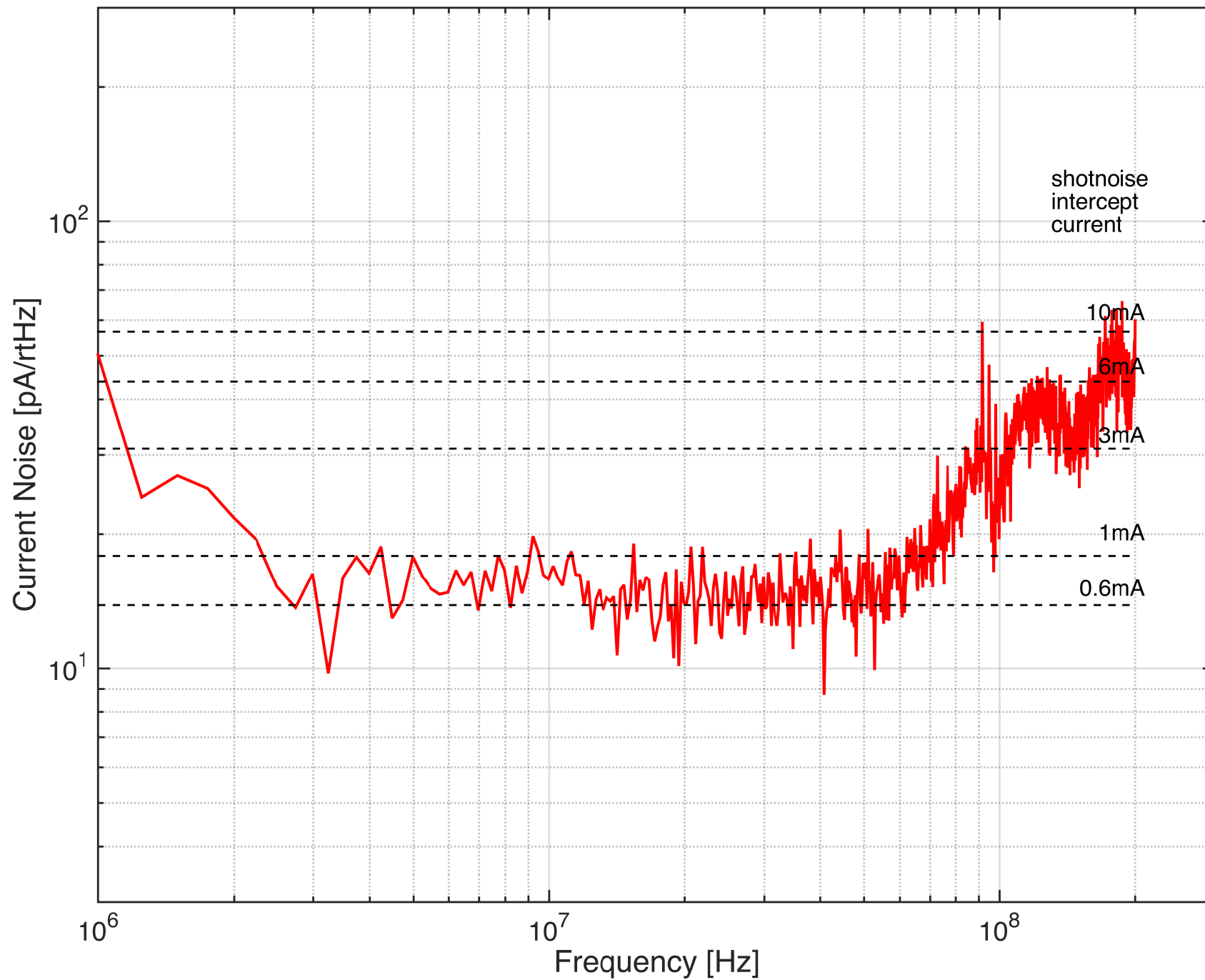


Title		
Size	Number	Revision
A		
Date:	8/10/2011	Sheet of
File:	\\..IBBPD.SchDoc	Drawn By:

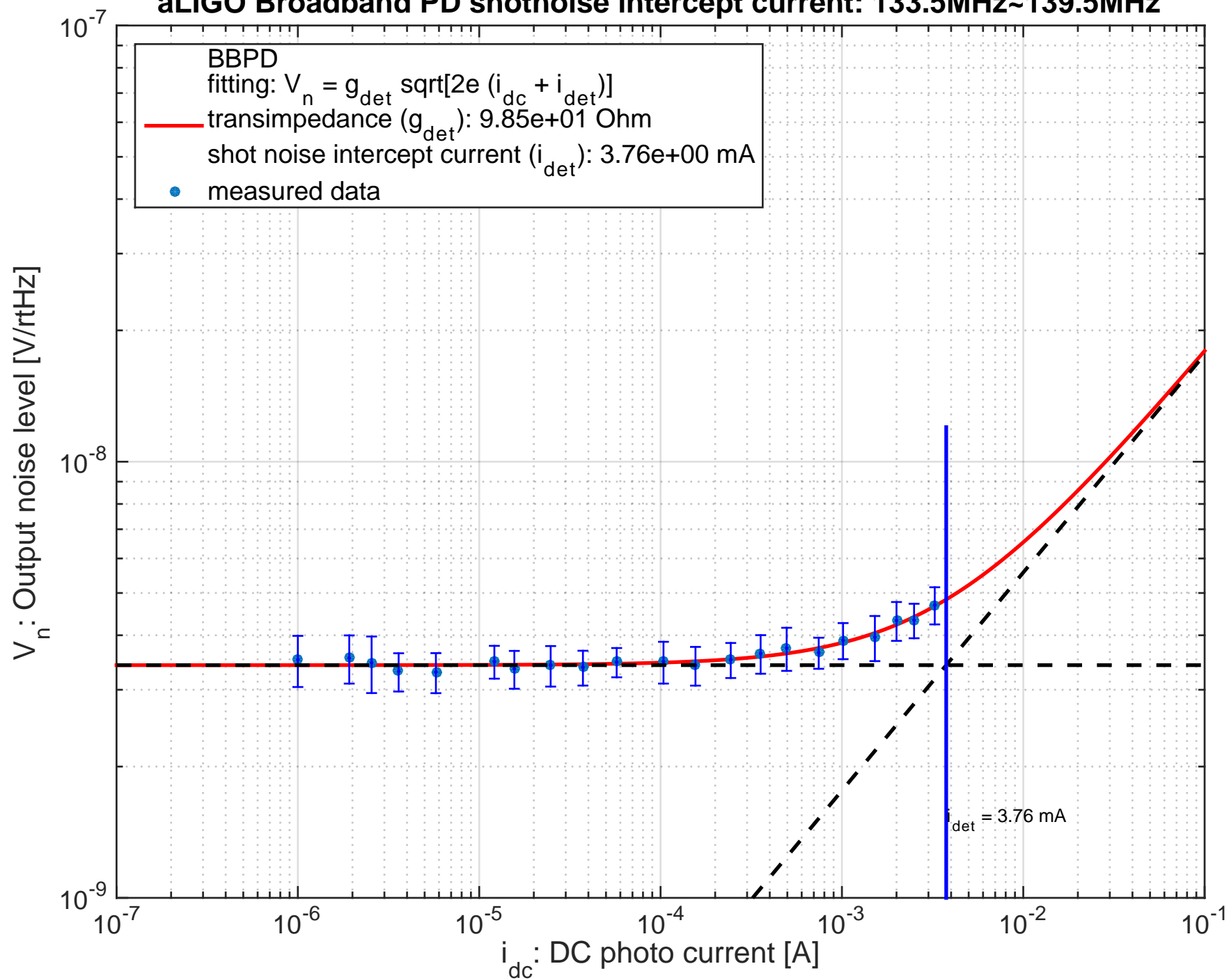
aLIGO Broadband PD response (2014/11/7)



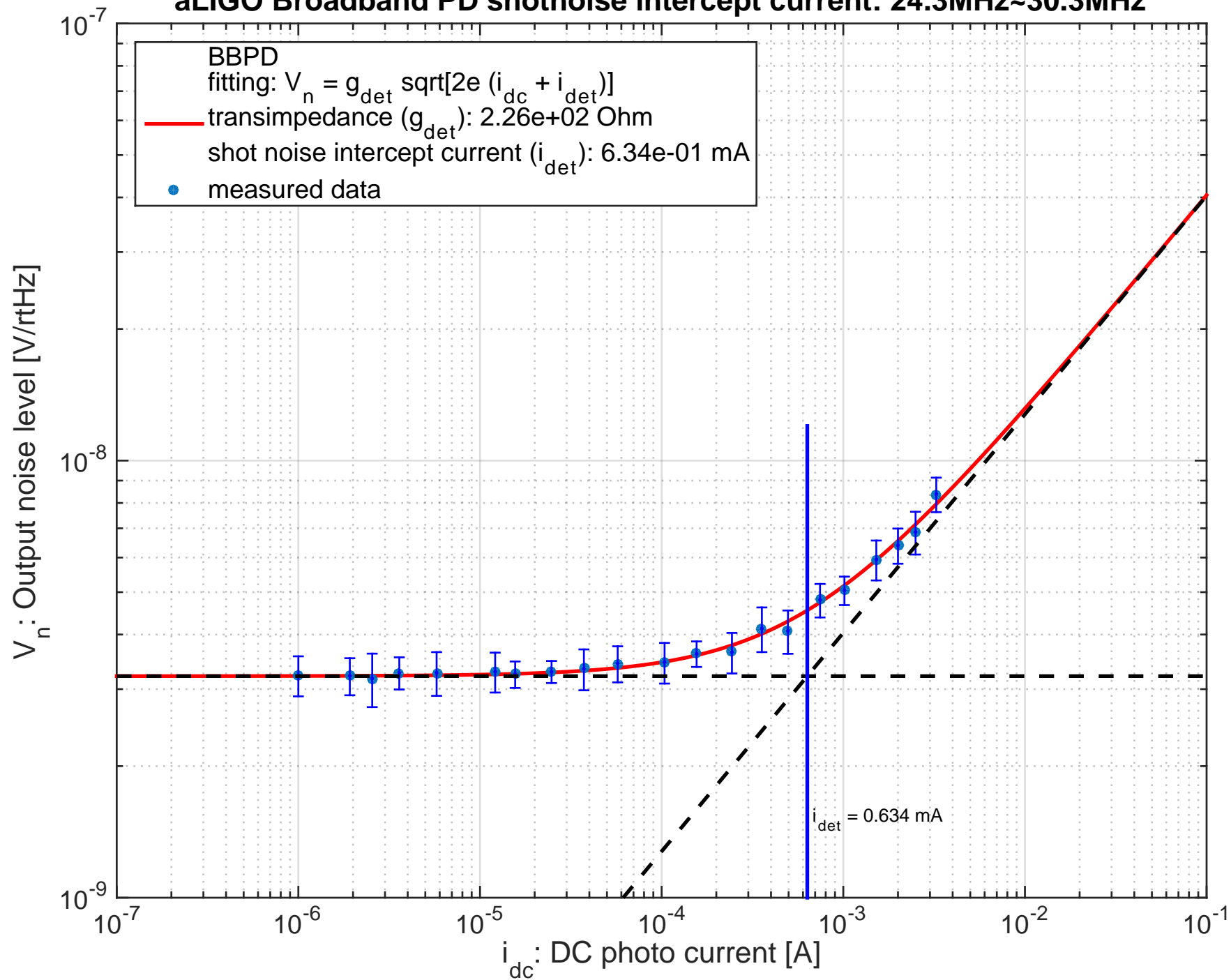
aLIGO Broadband PD current noise level



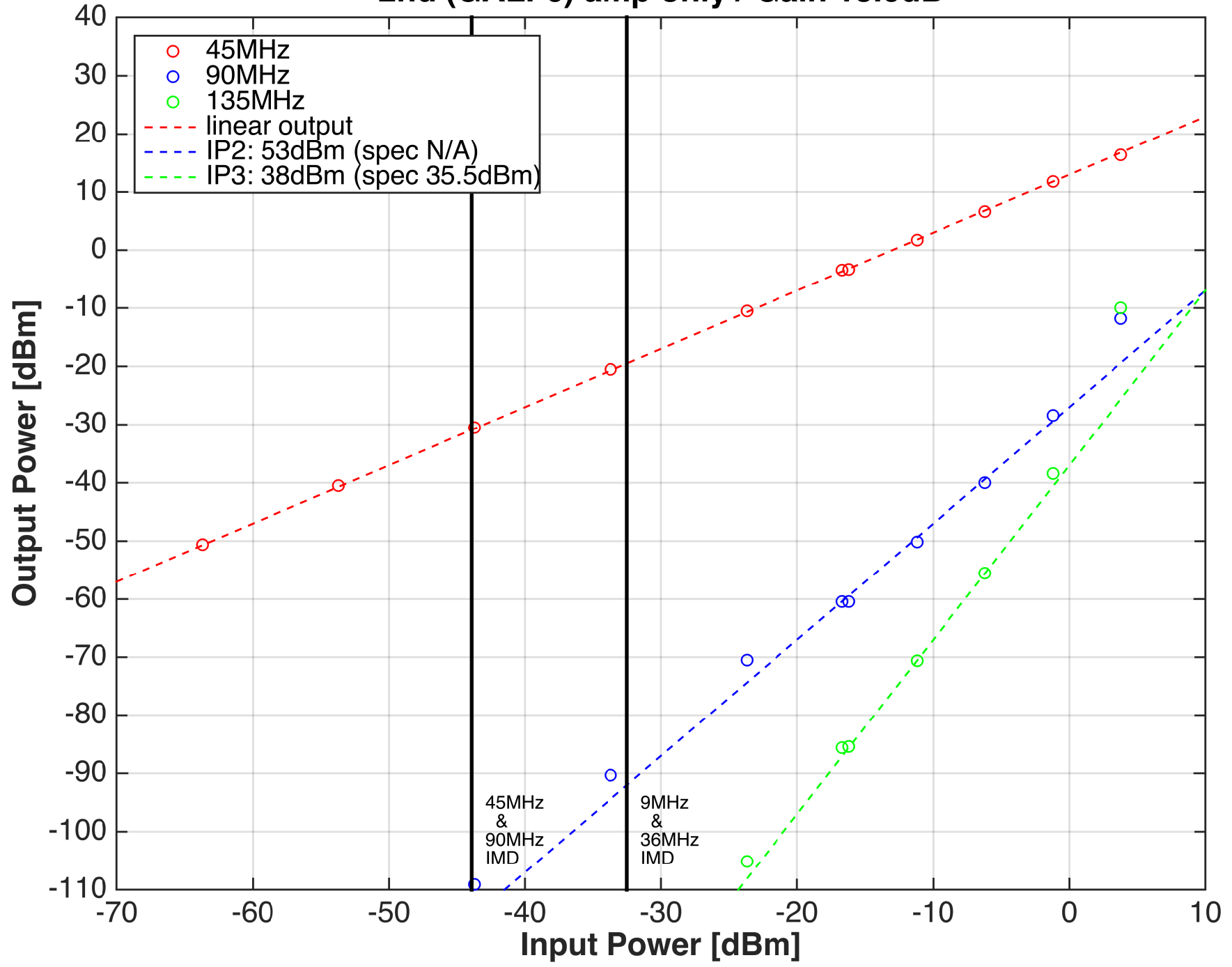
aLIGO Broadband PD shotnoise intercept current: 133.5MHz~139.5MHz



aLIGO Broadband PD shotnoise intercept current: 24.3MHz~30.3MHz



BBPD Amp IP2/IP3 test: 2nd (GALI-6) amp only / Gain 13.0dB



Electrical test