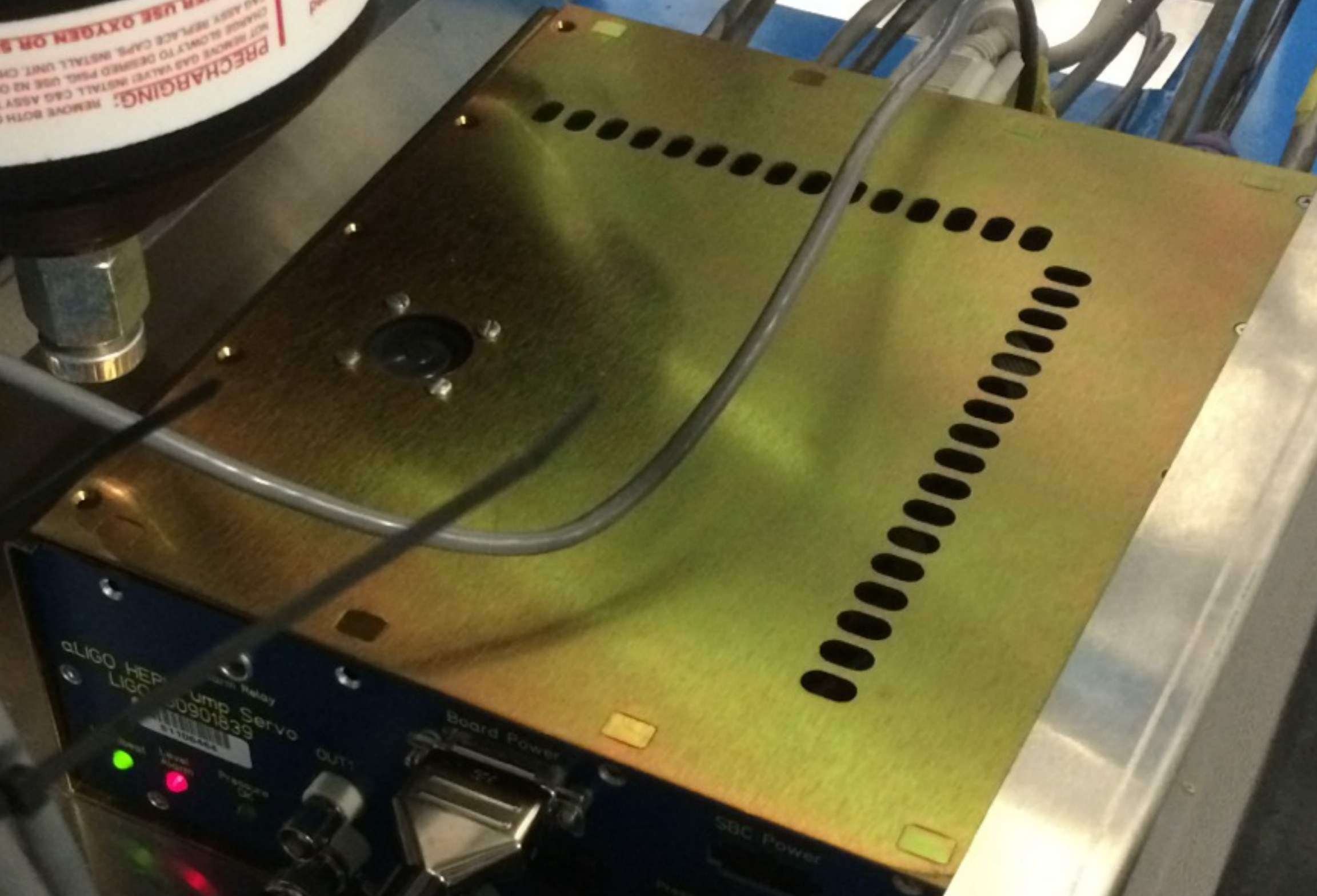


PRECHARGING: REMOVE BOTH CAPS. DO NOT REMOVE GAS VALVE! INSTALL GAS ASST TO GAS VALVE. CHANGE SLOWLY TO DESIRED PRESS. USE NO OILY REMOVS. CAP ASST REPLACE CAPS. INSTALL UNIT CHECK GAS OBTAIN. NEVER USE OXYGEN OR SHOP AIR.



ALIGO HEP
LICC
ump Servo
30901839

Panel

Alarm

Pressure

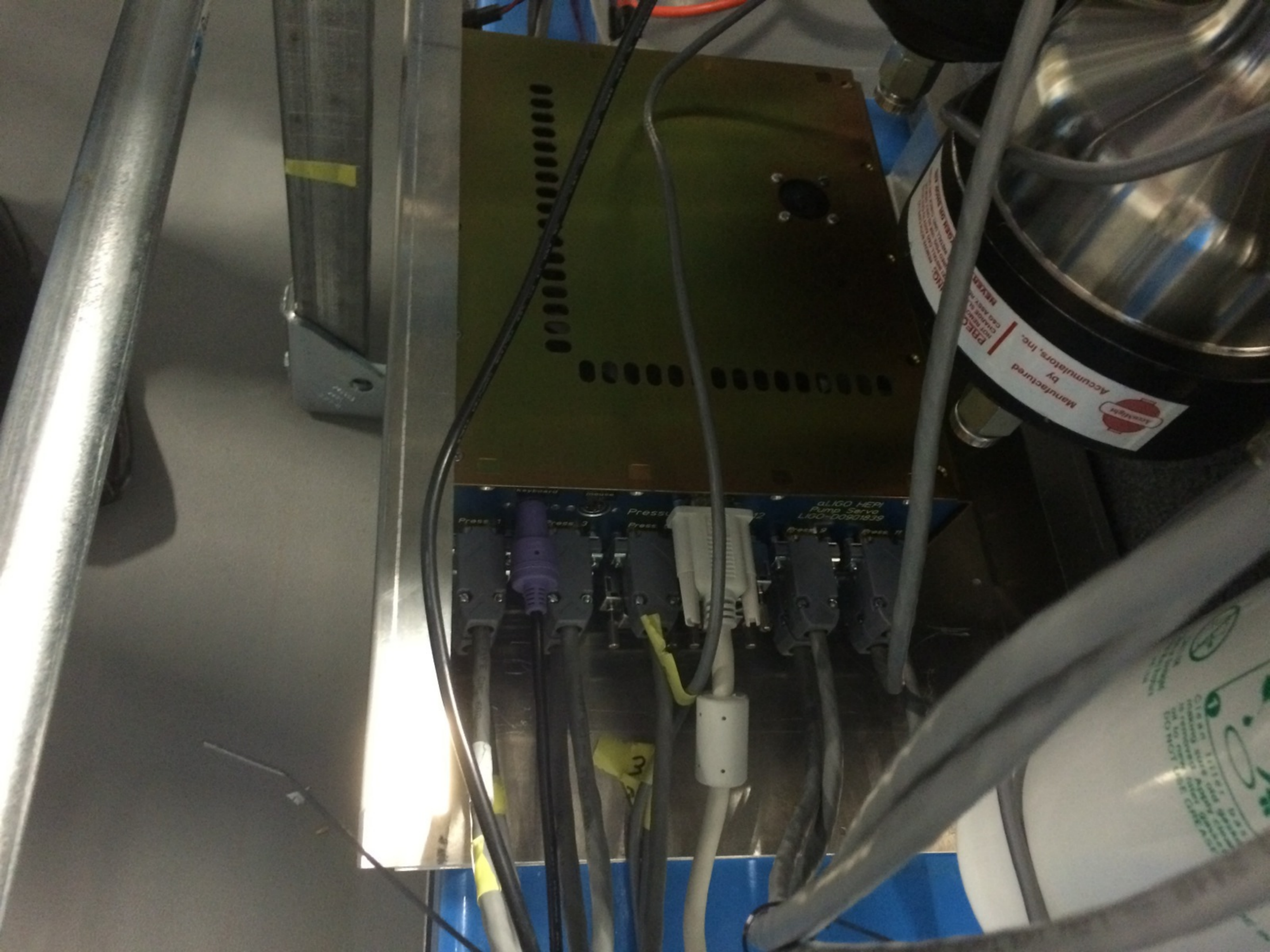
OUT1

Board Power

SBC Power

Pressure (psi)

IP1



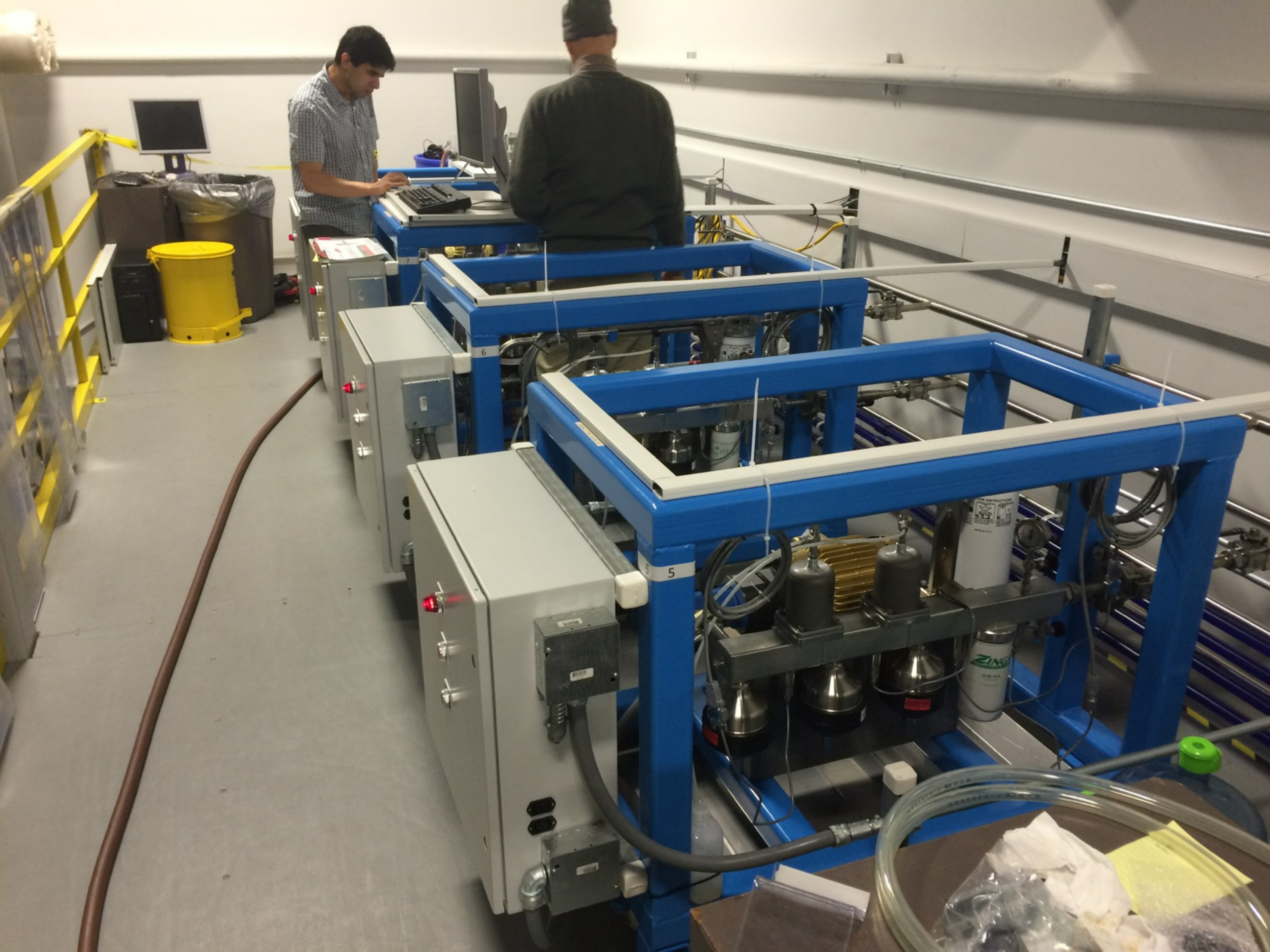
ALIGO HEPI
Pump Service
LIGO-00901839

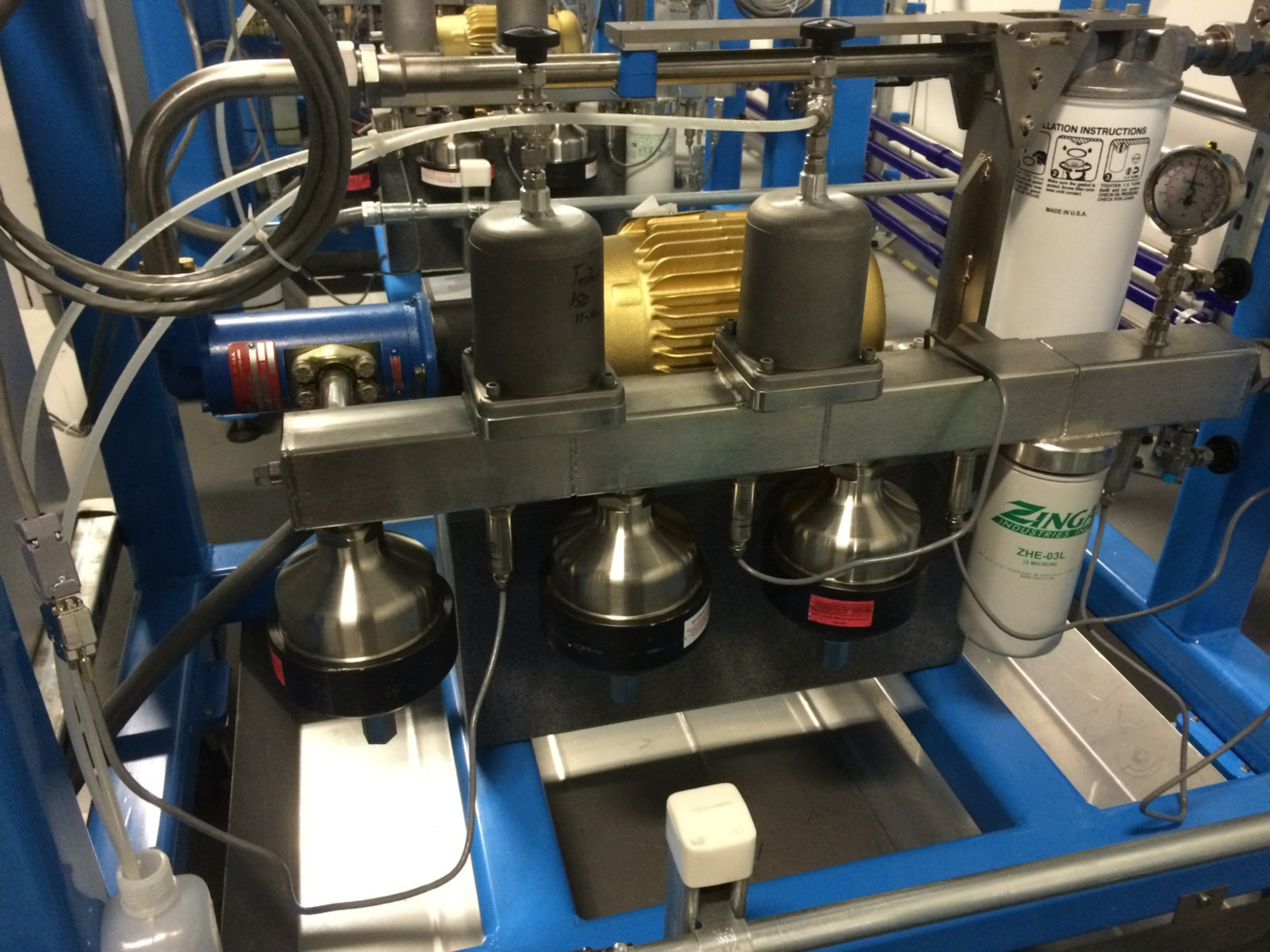
Accumulators, Inc.
Manufactured by
Accumulators, Inc.
PRECISION PNEUMATICS
NOT REPAIRABLE
CHANGE TO
CROSS REFER TO
NEW PART

3

CAUTION: This instrument is a Class II laser product. Do not stare into the beam or reflect the beam off of any surface. For more information, see the user manual.







OPERATION INSTRUCTIONS
MADE IN U.S.A.

ZINGA
INDUSTRIES
ZHE-03L
(3 MICRON)

T
10
11-8

BALDOR-RELIANCE
Super-E Motor
 BALDOR ELECTRIC CO. FT. SMITH, AR. MFG. IN U.S.A.

CAT. NO.	
SPEC.	
HP.	
VOLTS	
AMPS	
RPM	
TEMP.	
SER. F.	
NEMA NOM. EFF.	
RATING	
CC.	
REMARKS	

NEMA CLASS. 30
 NEMA CODE 30
 NEMA CLASS. 30
 NEMA CODE 30

WARNING
 MOTOR MUST BE GROUNDED BY ACCORDANCE WITH THE NATIONAL ELECTRICAL CODE AND LOCAL CODES BY TRAINED PERSONNEL TO PREVENT SERIOUS ELECTRICAL SHOCKS TO PERSONS.
 TO SERVICE MOTOR, DISCONNECT POWER COMPLETELY AND ALLOW MOTOR TO COOL TO A COMPLETELY FRIGID STATE.

LOW VOLTAGE
 LINE 1 2 3 4 5 6 7 8
 LINE 1 2 3 4 5 6 7 8

HIGH VOLTAGE
 LINE 1 2 3 4 5 6 7 8
 LINE 1 2 3 4 5 6 7 8

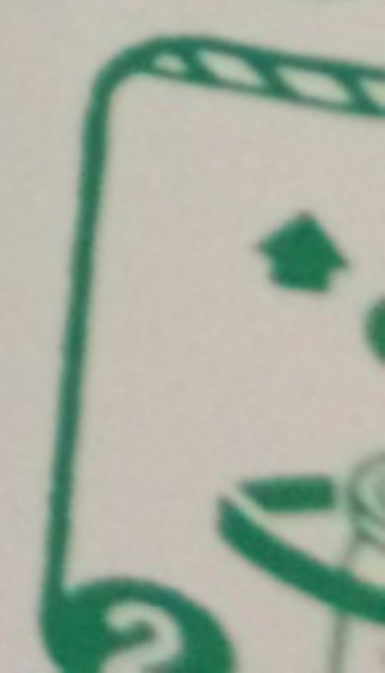
TYPE LFMC 3/4" ...
 SUPER VALVE



INSTALLATION



1
Clean filter base
making sure old
oil is removed. As
oil to new. As
DO NOT



2



PRECHARGING: REMOVE BOTH CAPS. DO NOT REMOVE GAS VALVE! INSTALL CAG ASSY TO GAS VALVE
NOT REMOVE GAS VALVE! INSTALL CAG ASSY TO GAS VALVE
CHANGE SLOWLY TO DESIRED PSIG. USE N2 ONLY. REMOVE
CAG ASSY, REPLACE CAPS. INSTALL UNIT. CHECK GAS OBTENI
NEVER USE OXYGEN OR SHOP AIR

Red label with a white circle and a red slash, indicating a warning or prohibition.

TEST
0300P66MD2
+ IN
- IN
+ OUT
- OUT
SHIE
RED
BLACK
GREEN
WHITE
BPRE

CAUTION!
NEVER USE OXYGEN OR SHOP AIR
IN THIS ACCUMULATOR. NEVER
OPERATE WITHOUT SUFFICIENT DRY NITROGEN GAS PRECHARGE.
REPAIR ALL SEALS AND SERVICE PRIOR TO SERVICING OR DISASSEMBLY.
DO NOT OPERATE BEYOND STAMPED MAXIMUM WORKING PRESSURE.
DO NOT WELD OR MODIFY THIS UNIT IN ANY WAY.

CONTROL
INPUT

KILL INPUT





39.53

AF-300 P11™

UNITED STATES OF AMERICA

SOLA
Power Supply
SON 5-24-100P

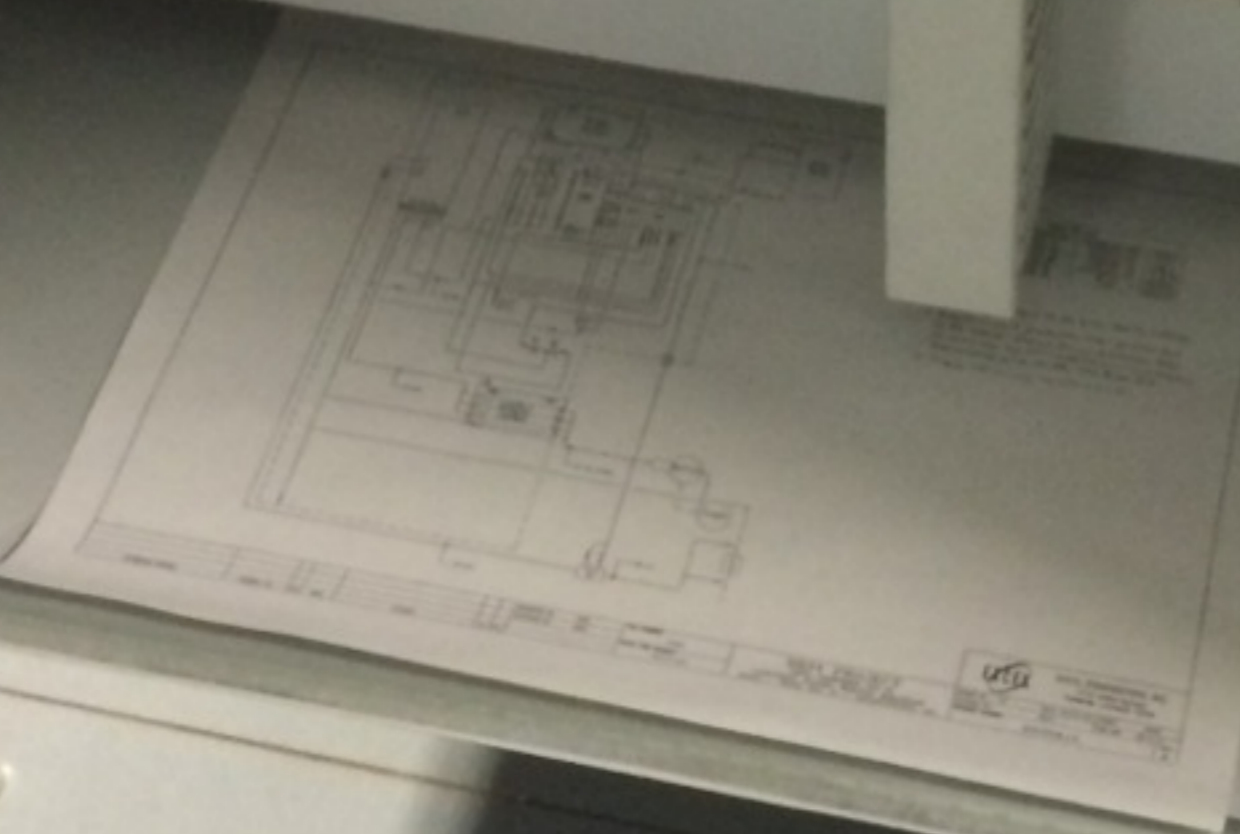
10098/21827

RUSSIA

NO LOAD

L-BOX 2.3mH-25%+50%
0-6X1.0mF/25%+50%
4X 0.047mF/1%
R-3X2.4mΩ

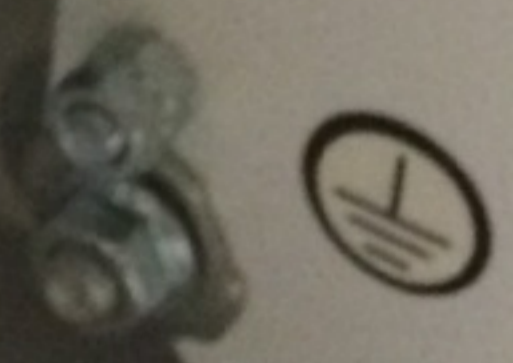
FILTER
SOLA H
250V/4A/50
SOLA
50/70Hz



UL LISTED **UL**
SED INDUSTRIAL CONTROL PANEL
No. BK - 695921



UL LISTED
SED INDUSTRIAL CONTROL PANEL
No. BK - 695921



39.54

Hz A V % r/min m/min kW X10 X100

RUN FWD
STOP REV
MENU
SHIFT

FWD REV STOP REM LOC COMM JOG

PRG

^

JOG / NORMAL

FWD

SHIFT
>>

v

RUN

REV

RESET

FUNC
DATA

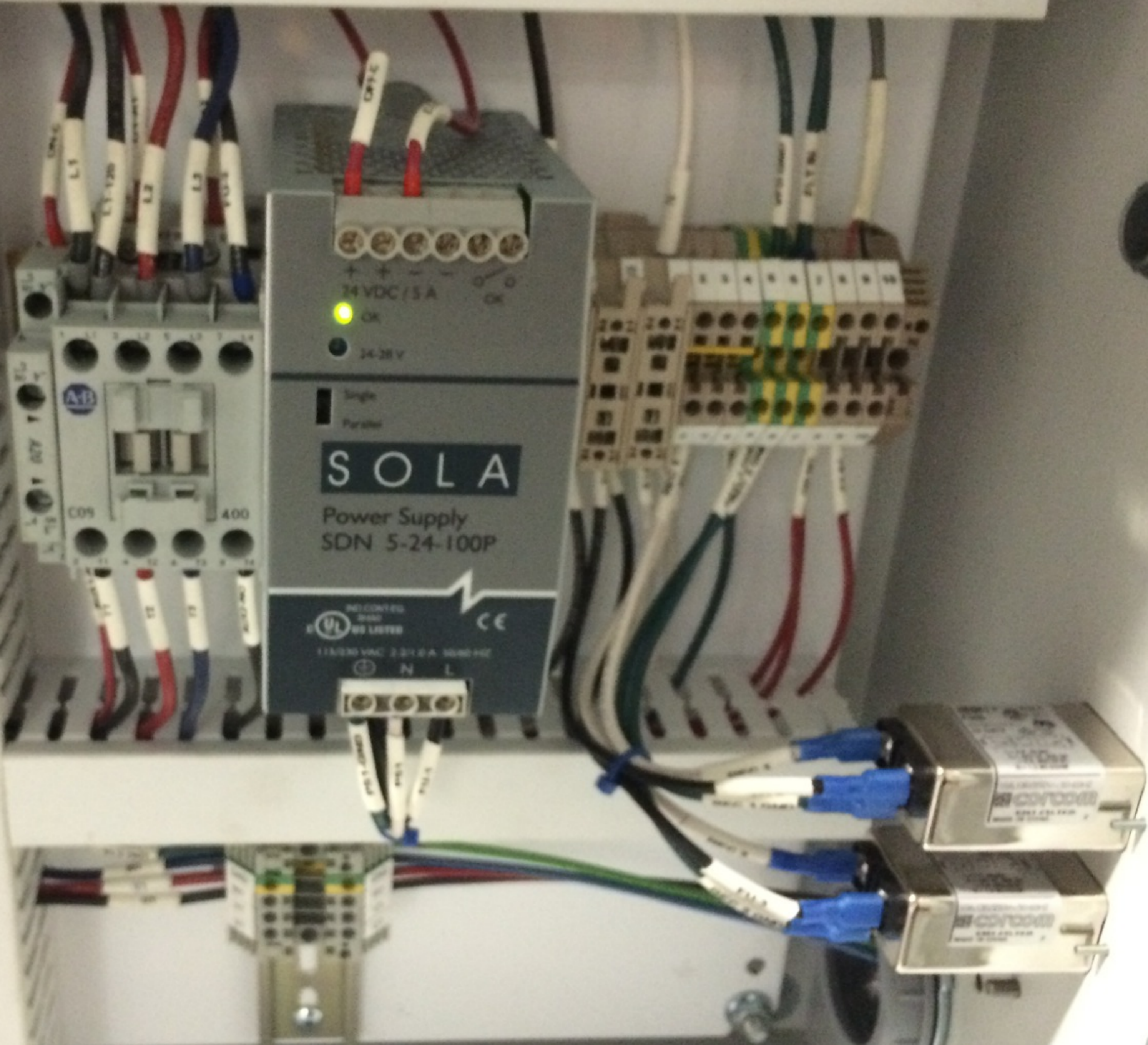
STOP

REMOTE / LOCAL

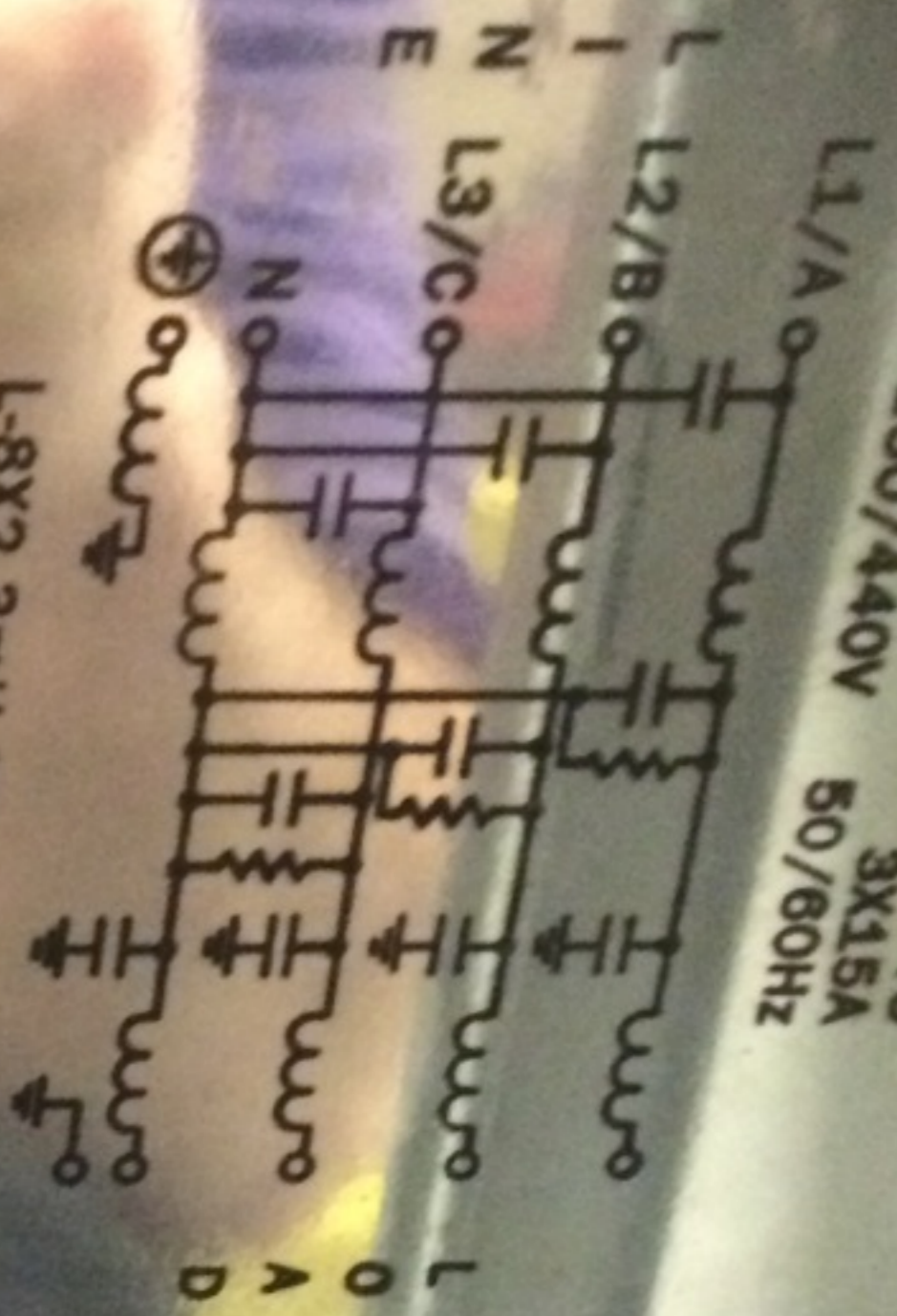


AF-300 P11™





LINE
CONCEPTS
3X15A
50/60HZ
FILTER
3F15 H
250/440V



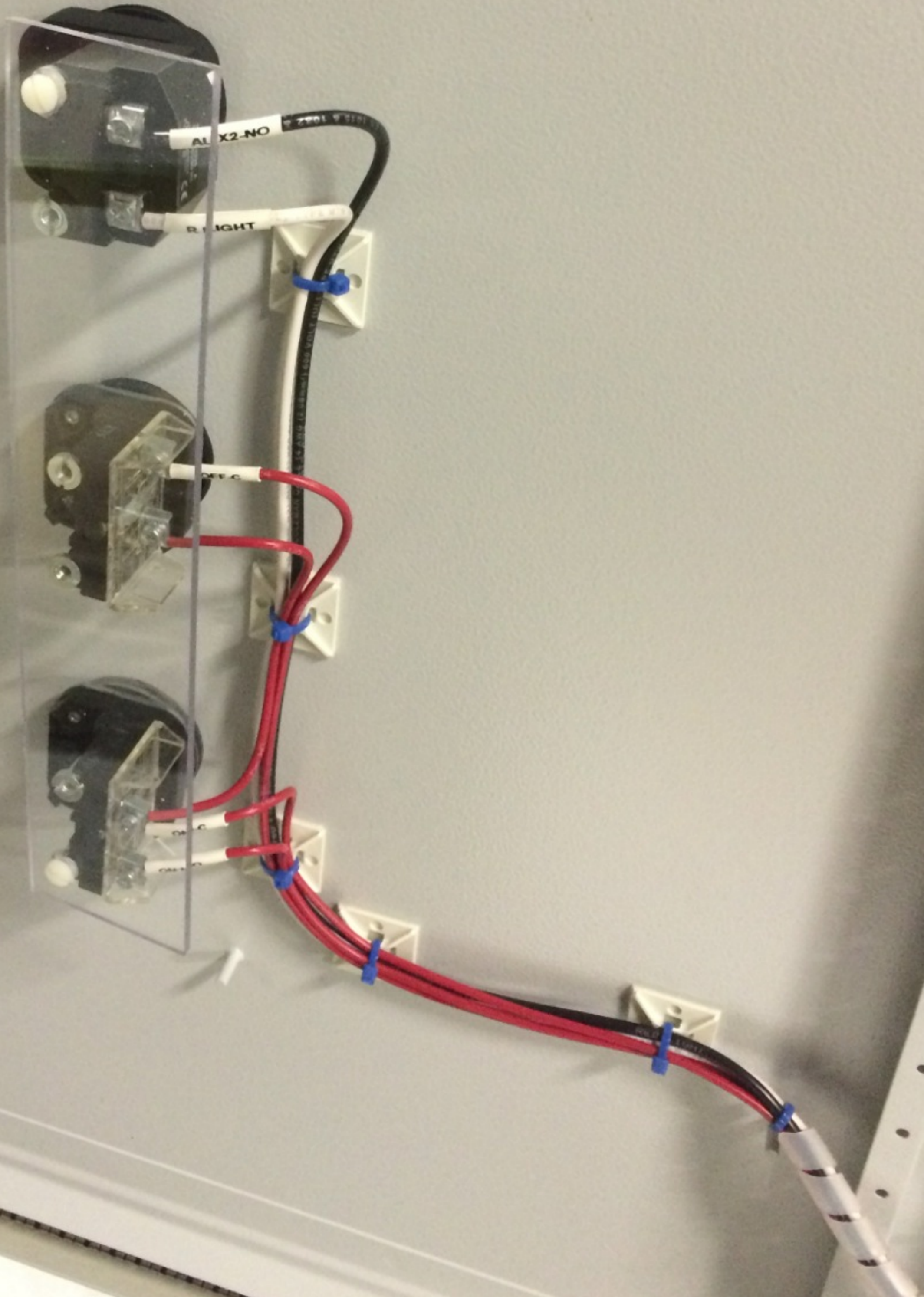
L-8X2.3mH-25%+50%
1X37μH-25%+50%
C-6X1.0μF(X2)MKT
4X.0047μF(Y)
R-3X2.4MΩ

PA SR

LOAD

10009R/21827



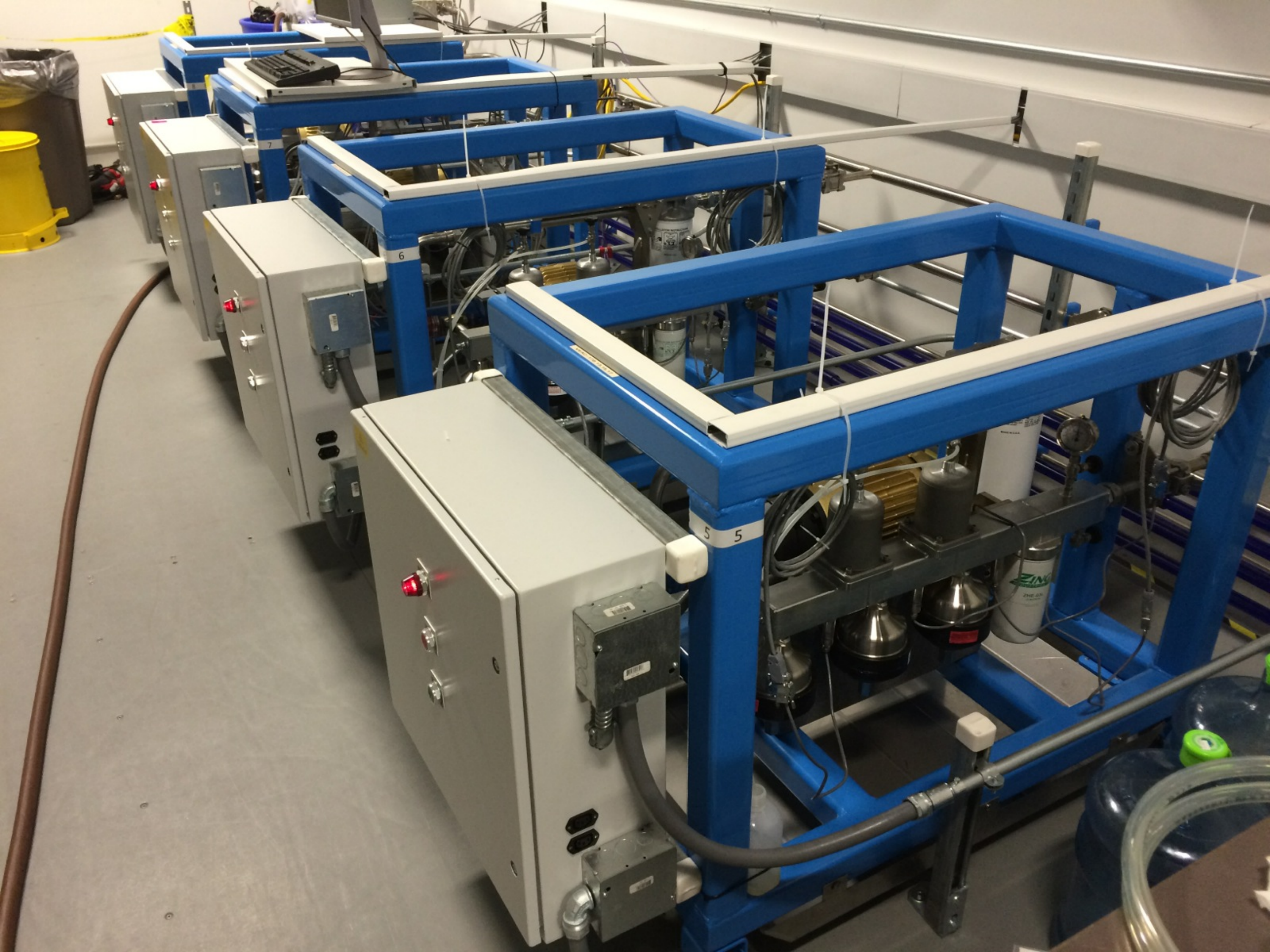


(MICRON)
REEDSBURG, WI 53959 - PHONE: 608/824-4200
WWW.ZINGA.COM

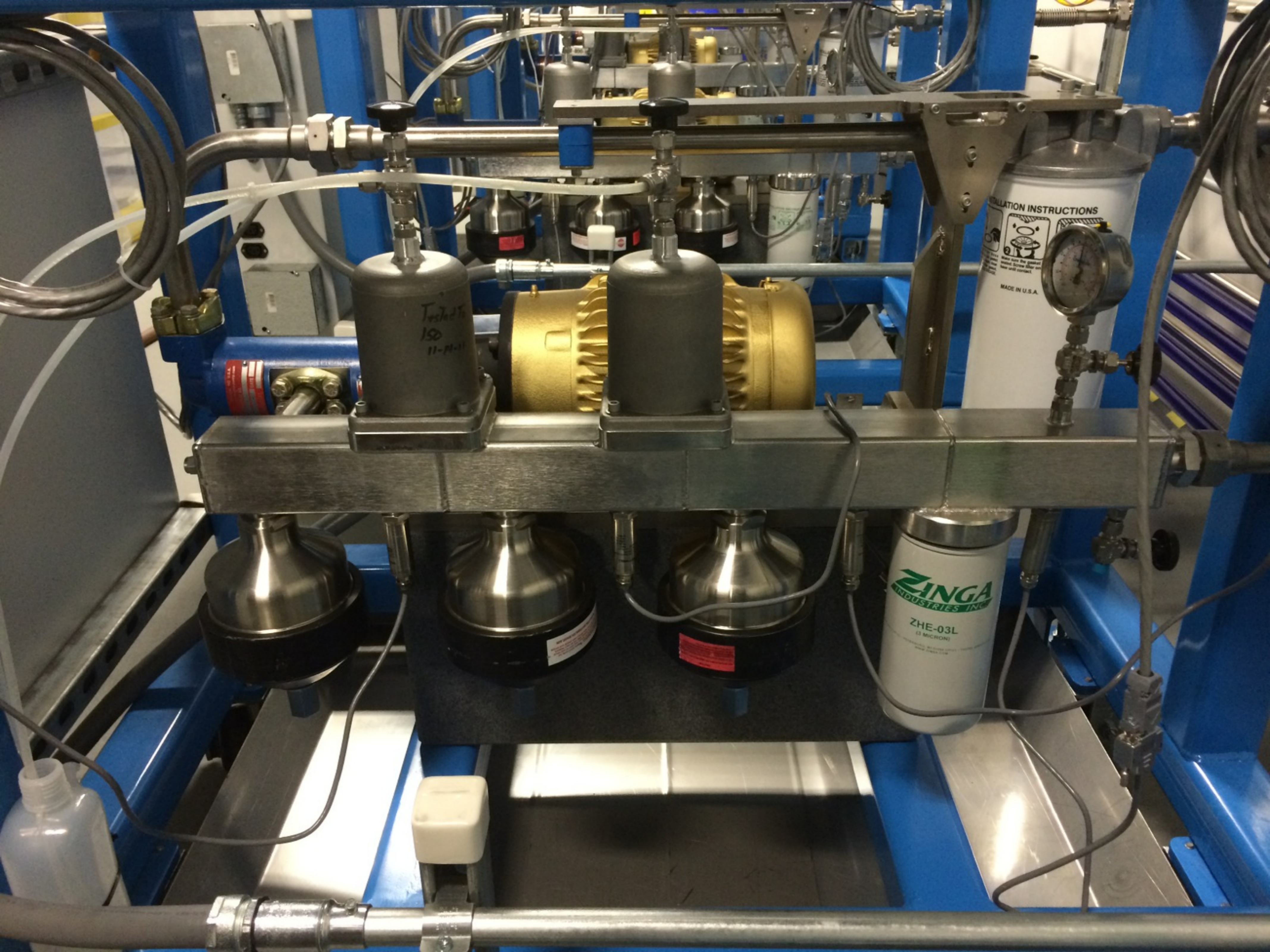
Wagner Electric
Model No. 1000
15 AMP 120 VAC 60 HZ
Made in USA

Wagner Electric
Model No. 1000
15 AMP 120 VAC 60 HZ
Made in USA









INSTALLATION INSTRUCTIONS

MADE IN U.S.A.

Tested to
150
11-11-11

ZINGA
INDUSTRIES INC.

ZHE-03L
(3 MICRON)

