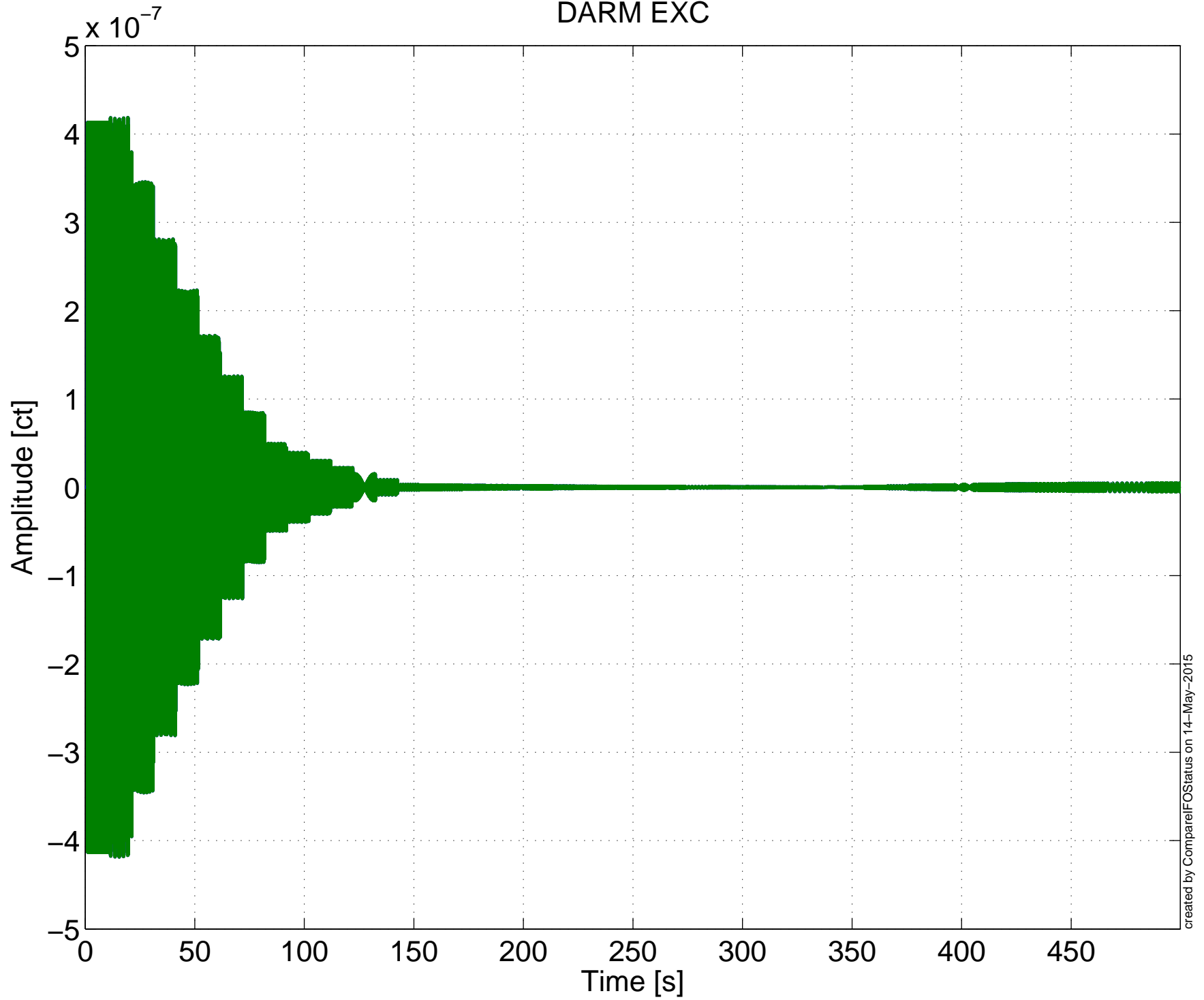
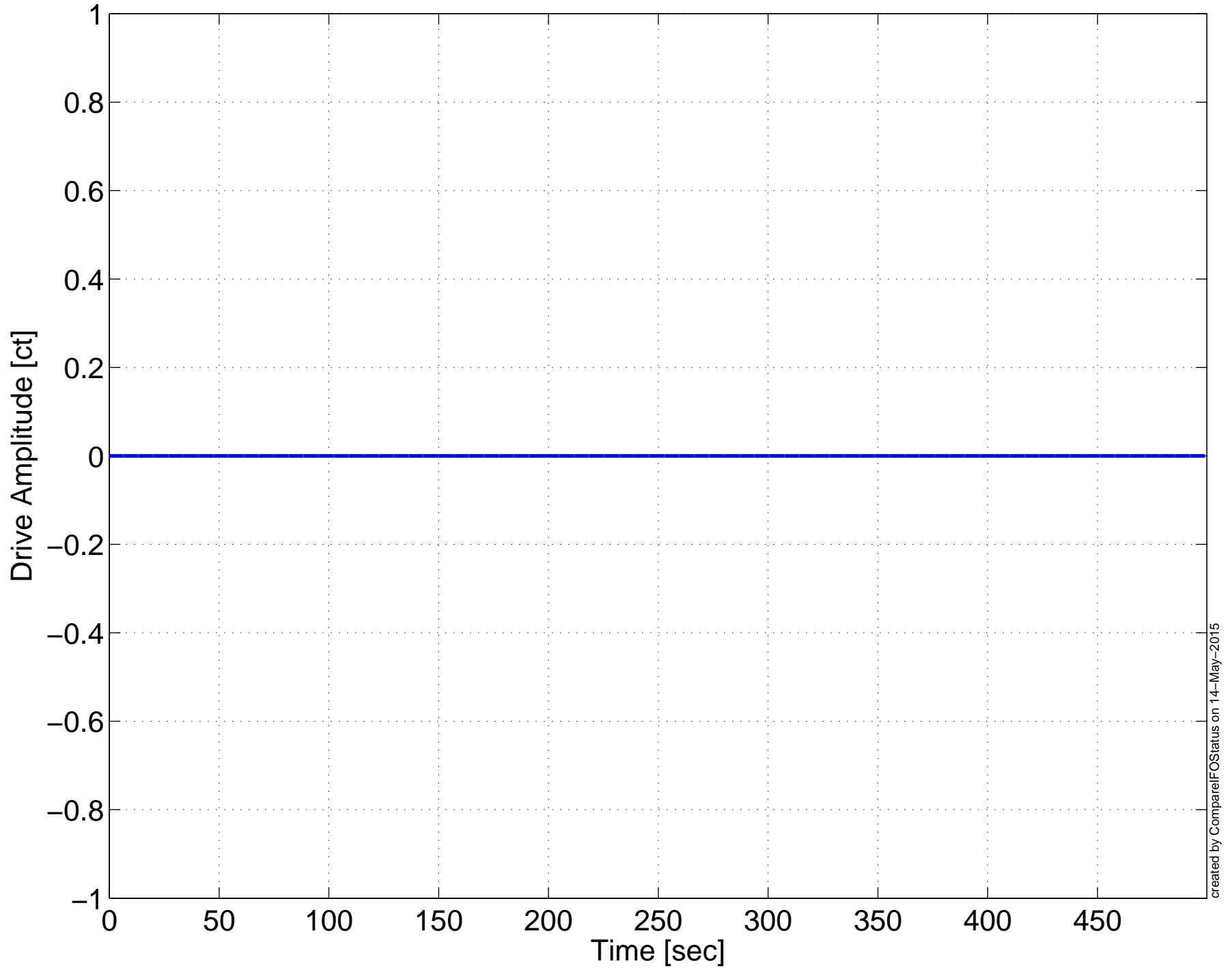
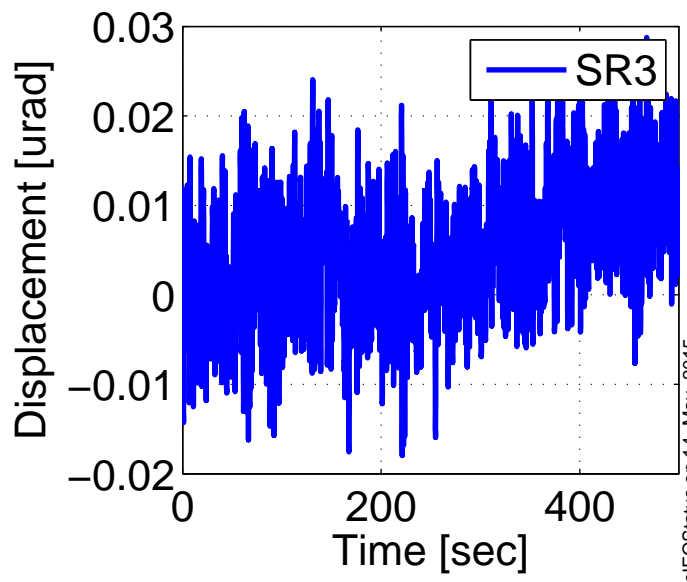
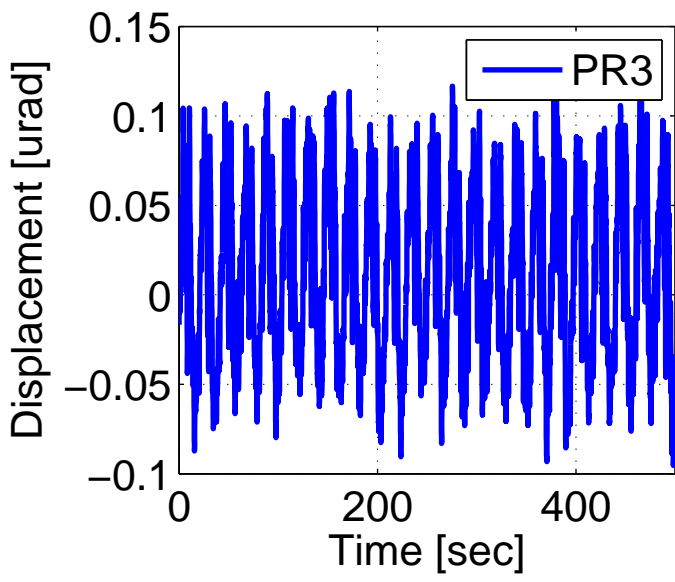
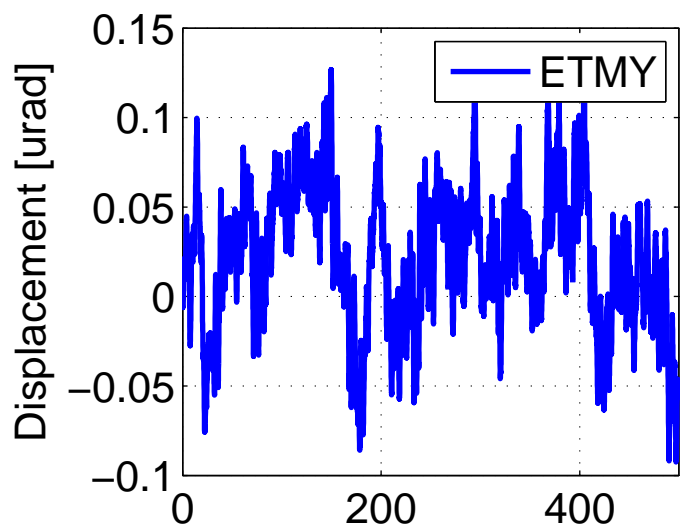
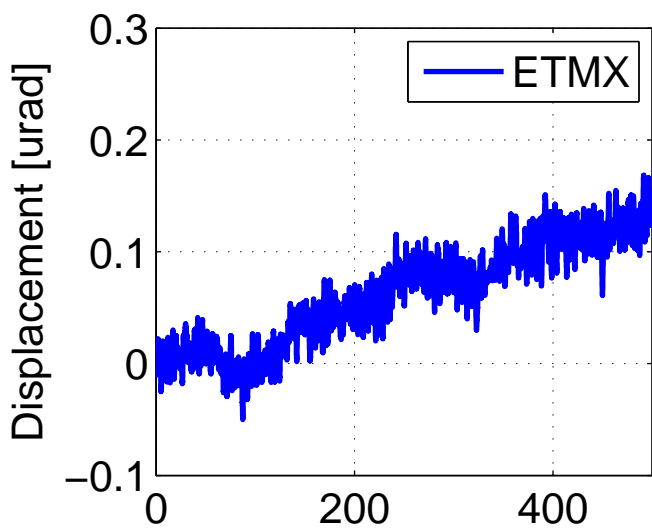
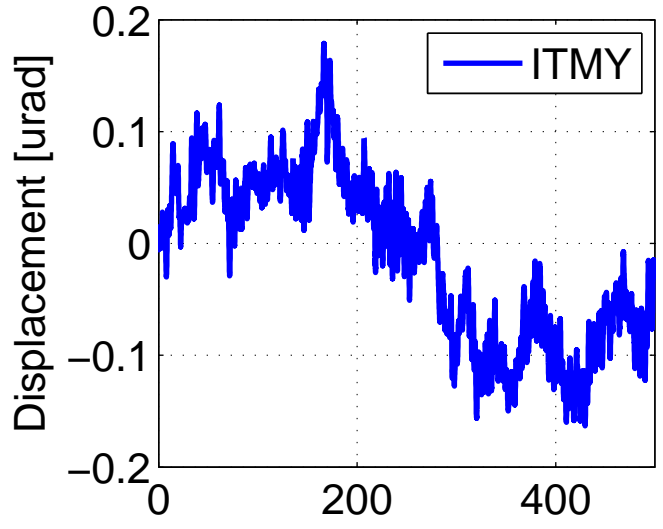
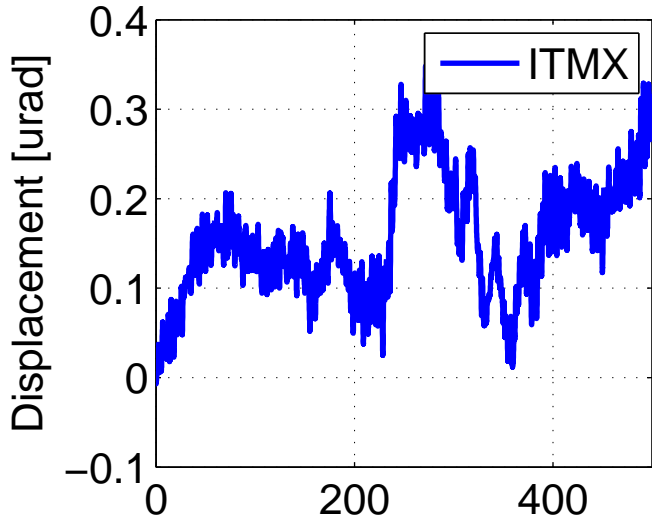


H1 DARM OLGTF, May 11 2015 15:50:43 UTC
DARM EXC

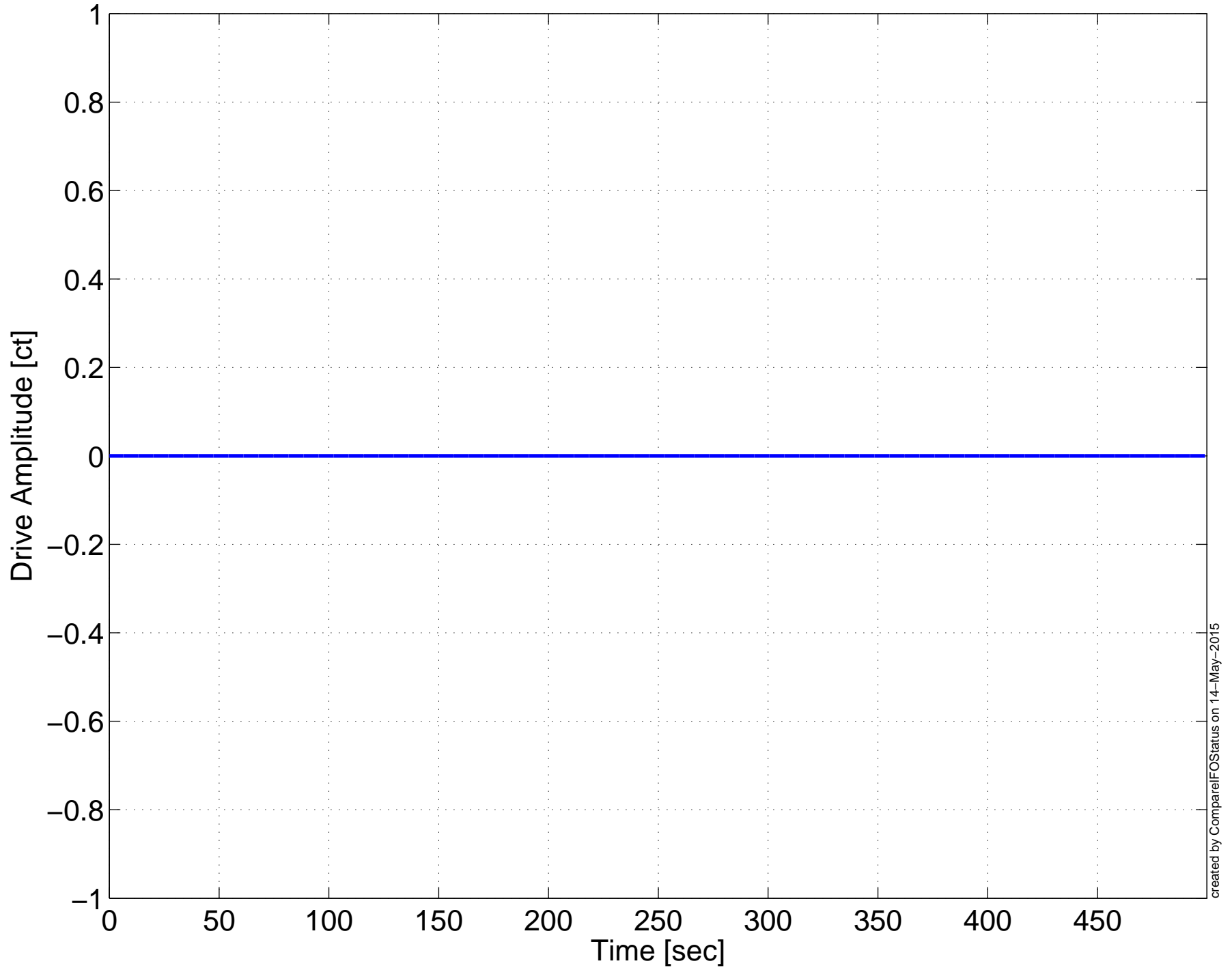


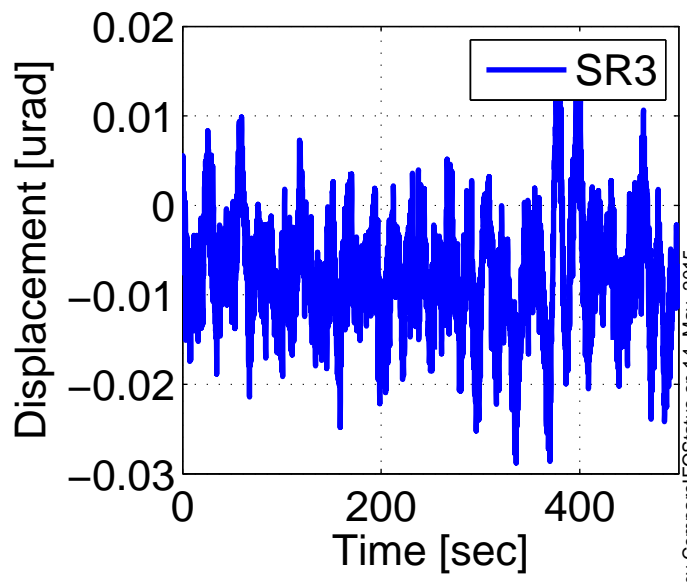
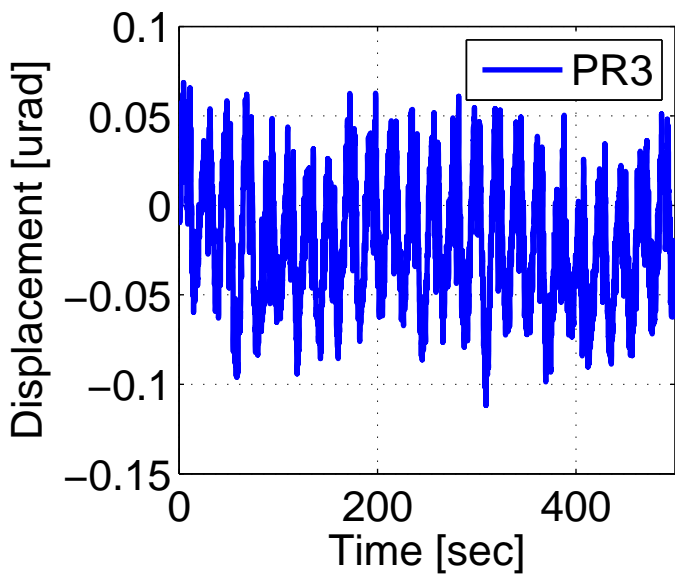
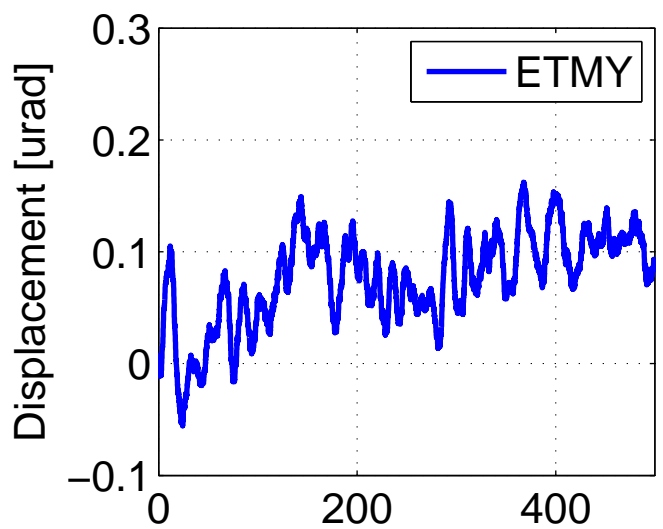
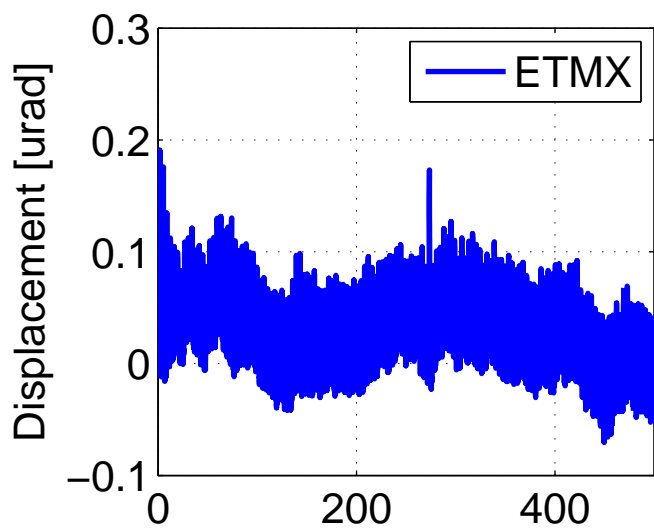
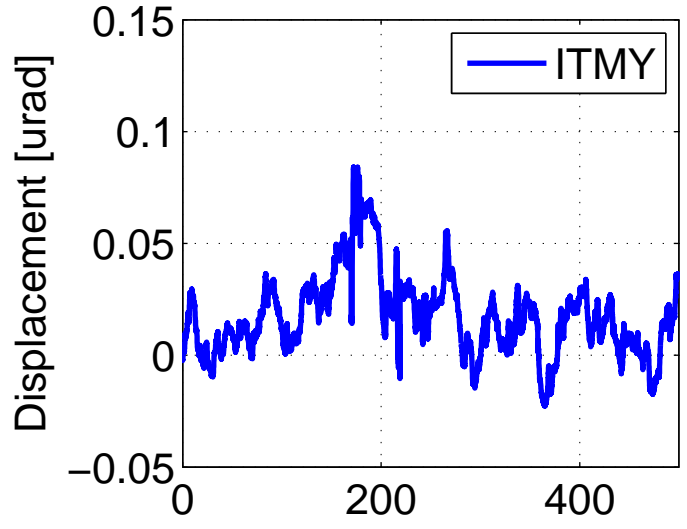
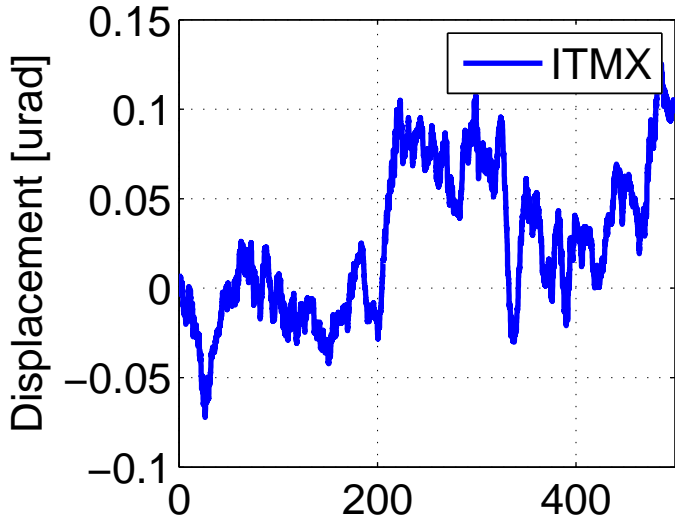
H1 DARM OLGTF, May 11 2015 15:50:43 UTC
Diff. SOFT (ITMX) Control Signal



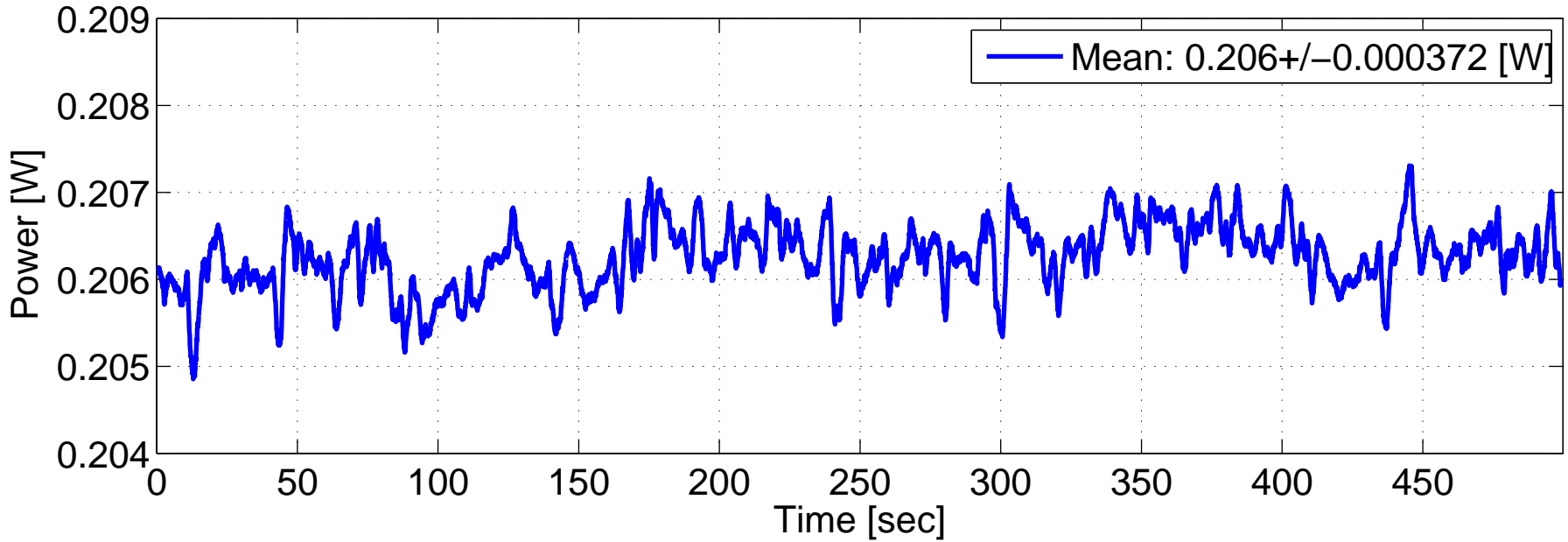


H1 DARM OLGTF, May 11 2015 15:50:43 UTC
Common SOFT (ITMY) Control Signal

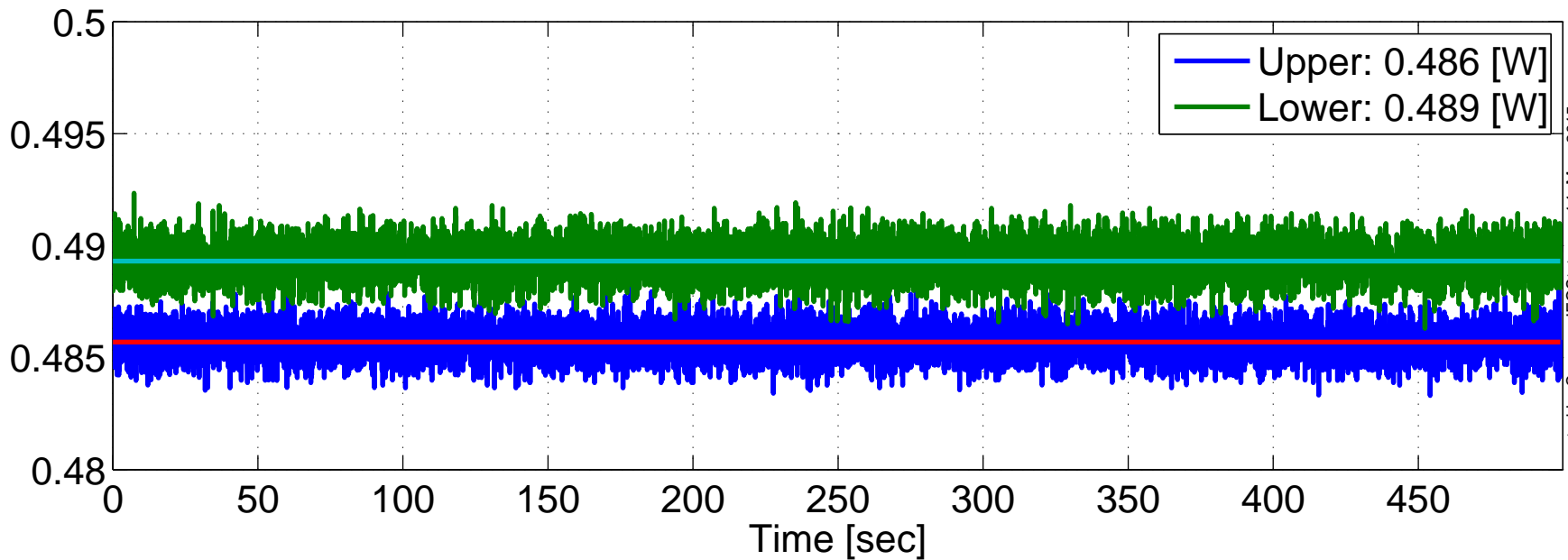




H1 DARM OLGTF, May 11 2015 15:50:43 UTC
TCS ITMX CO2 Laser Power



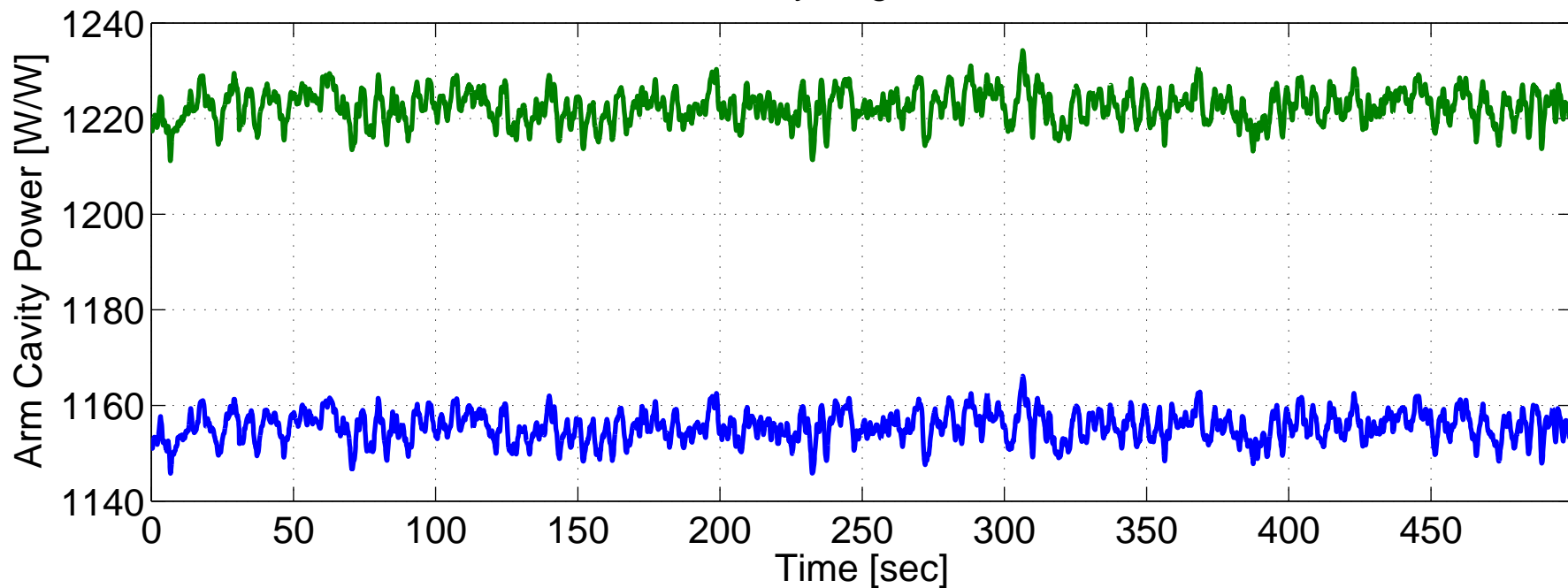
H1 DARM OLGTF, May 11 2015 15:50:43 UTC
TCS ETMX Ring Heater Power



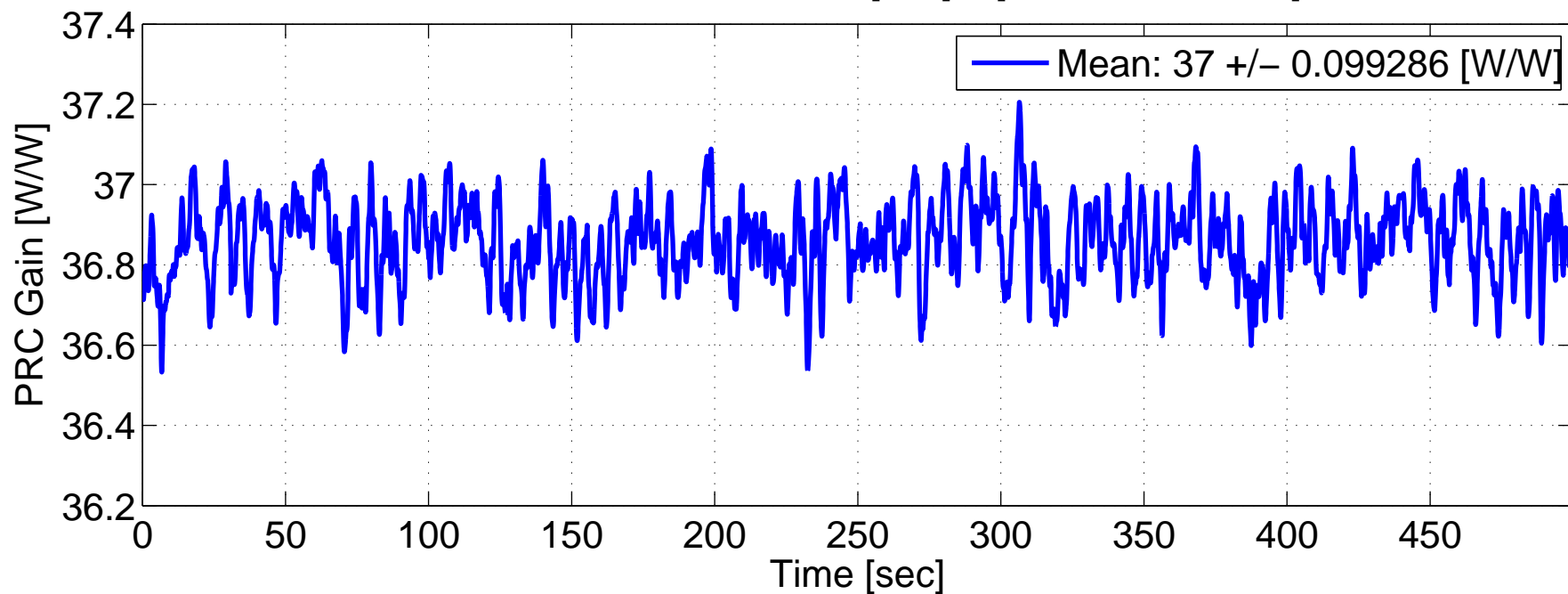
created by CompareFOStatus on 14-May-2015

H1 DARM OLGTF, May 11 2015 15:50:43 UTC

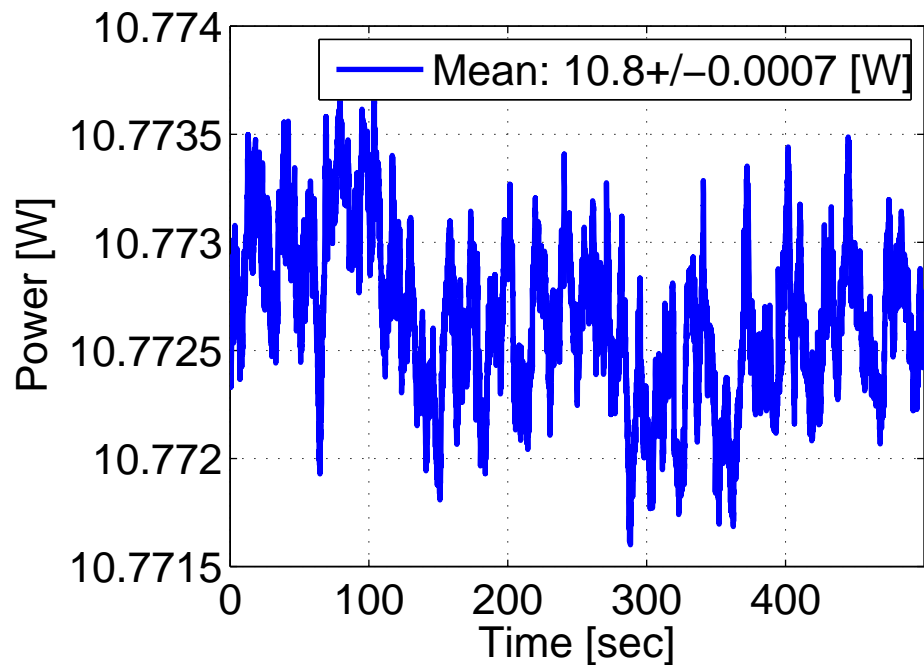
Power Recycling Gain, Carrier



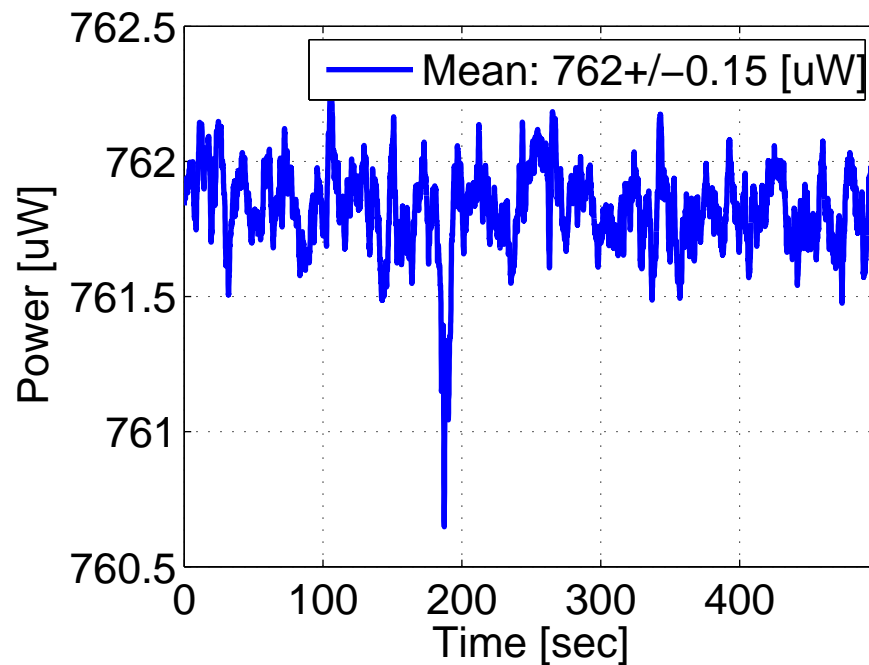
QPD Normalization Gains: [X,Y] = [0.23599,0.22999]



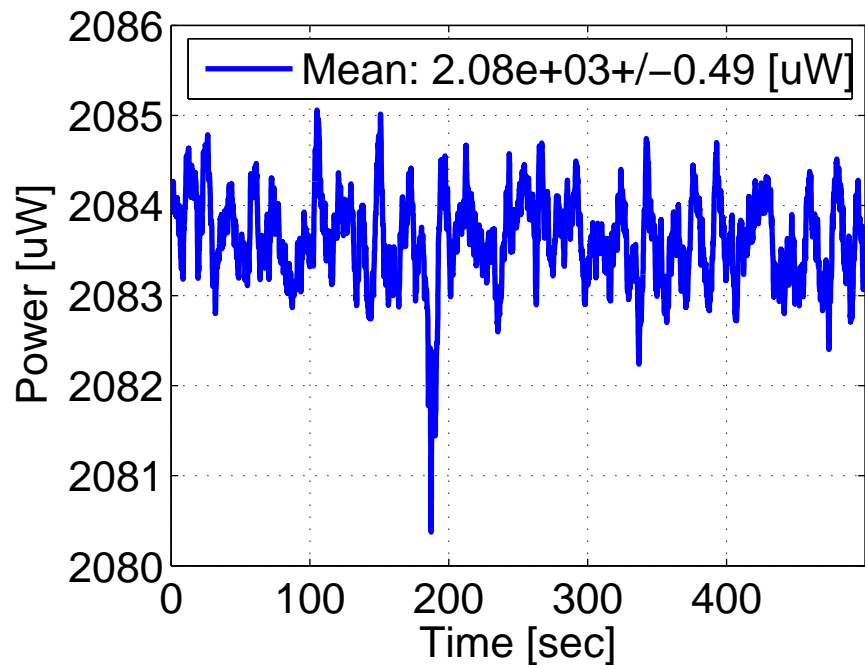
Power Into the IFO



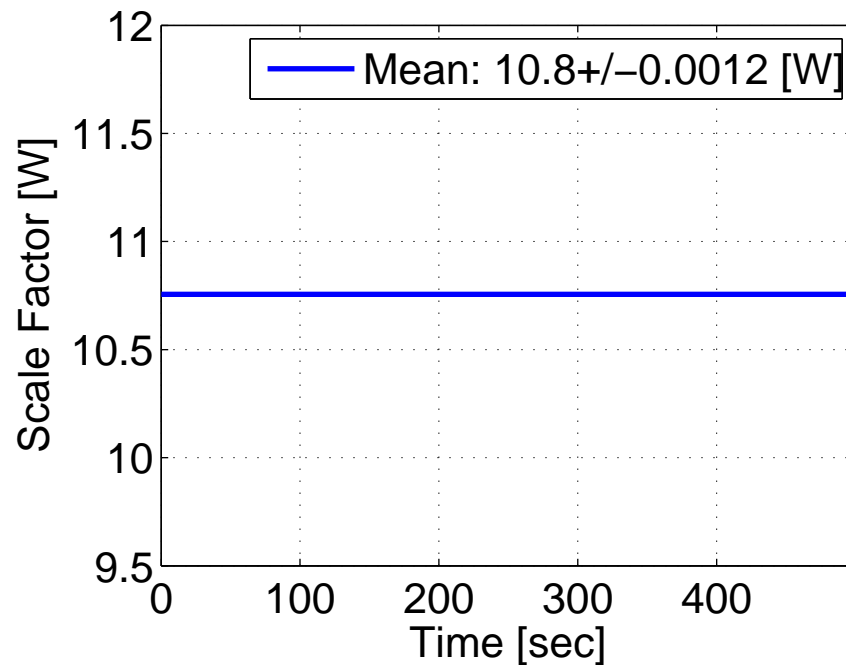
Power @ MC2 Trans



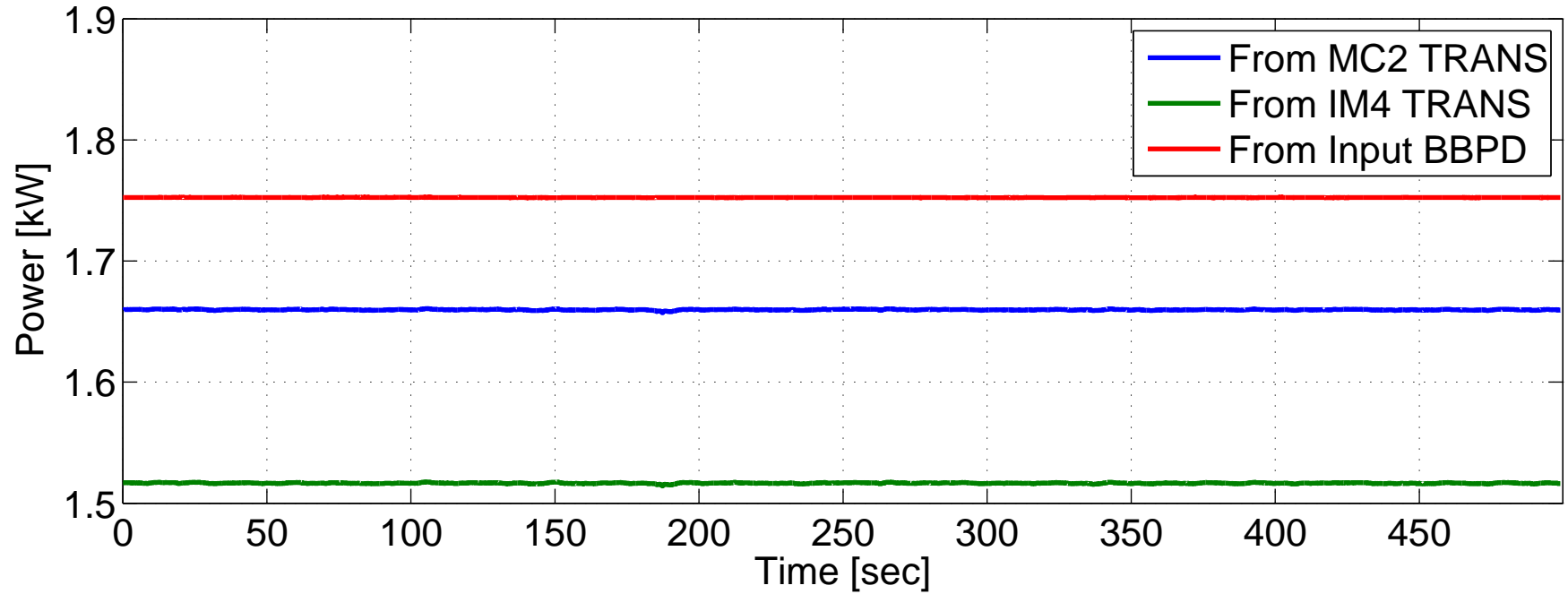
Power @ IM4 Trans



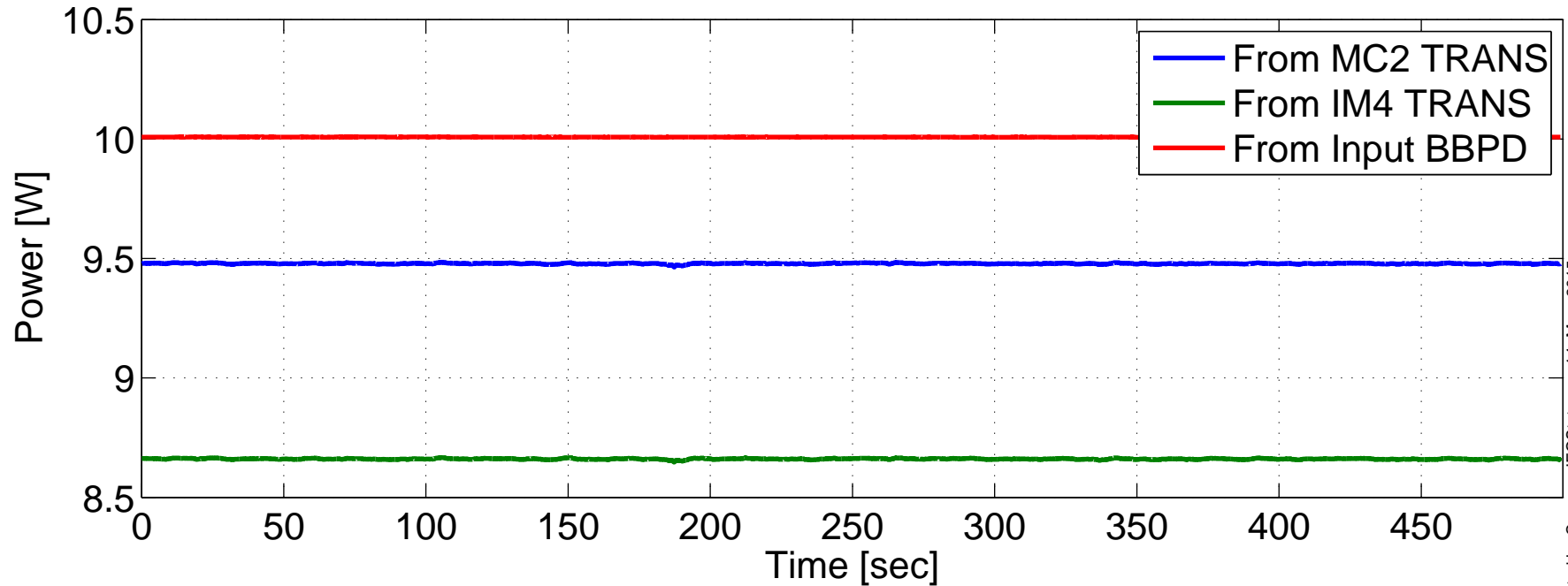
Power Scale Factor



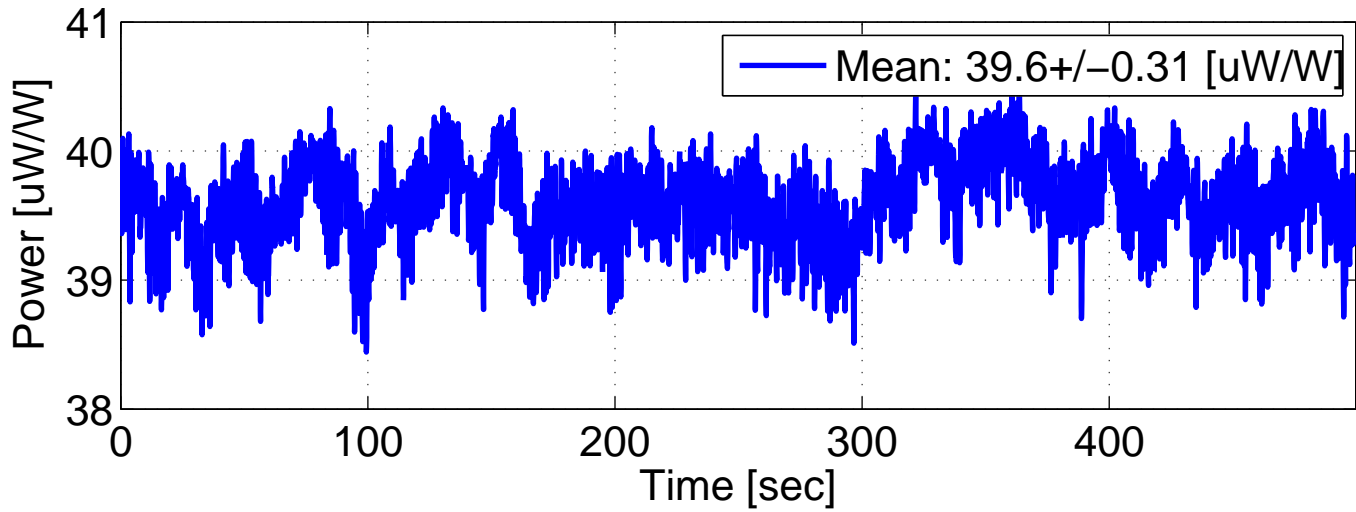
H1 DARM OLGTF, May 11 2015 15:50:43 UTC
Intra-Power in the IMC (Mean: 1.64 +/- 0.12 [kW])



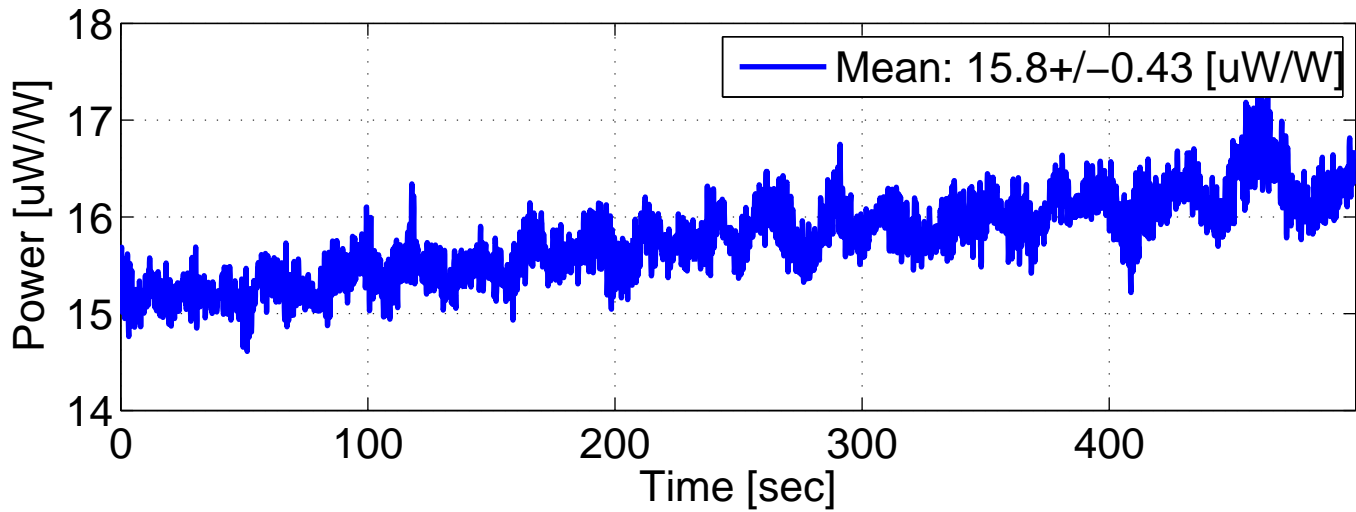
Power into PRM (Mean: 9.38 +/- 0.68 [W])



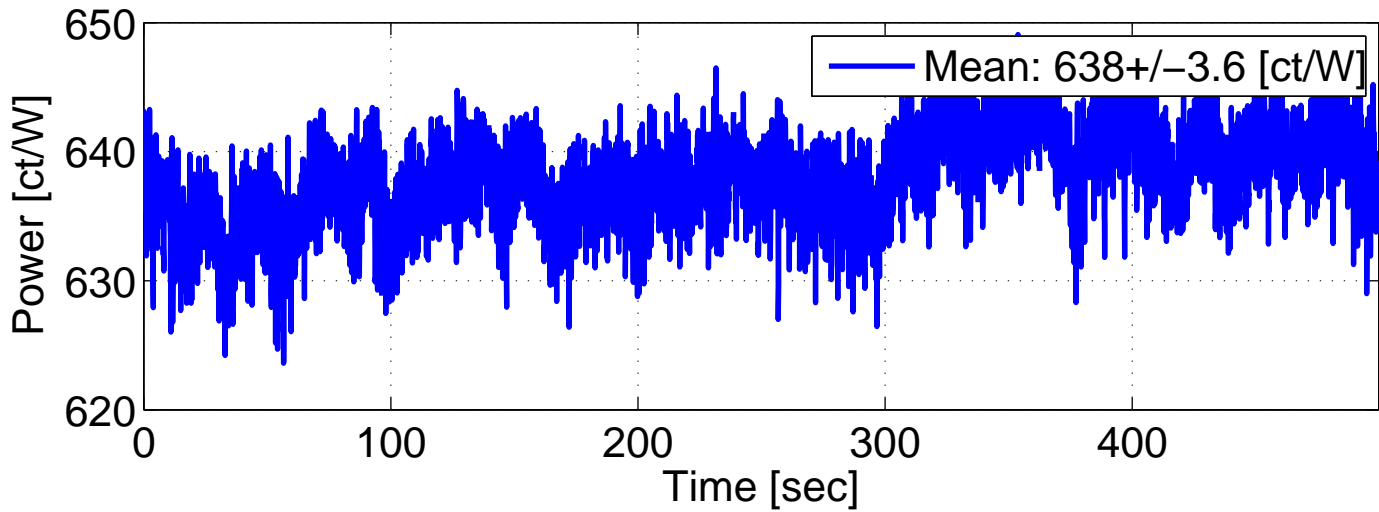
H1 DARM OLGTF, May 11 2015 15:50:43 UTC
POPAIR RF18 I, 9 [MHz] PRC Gain



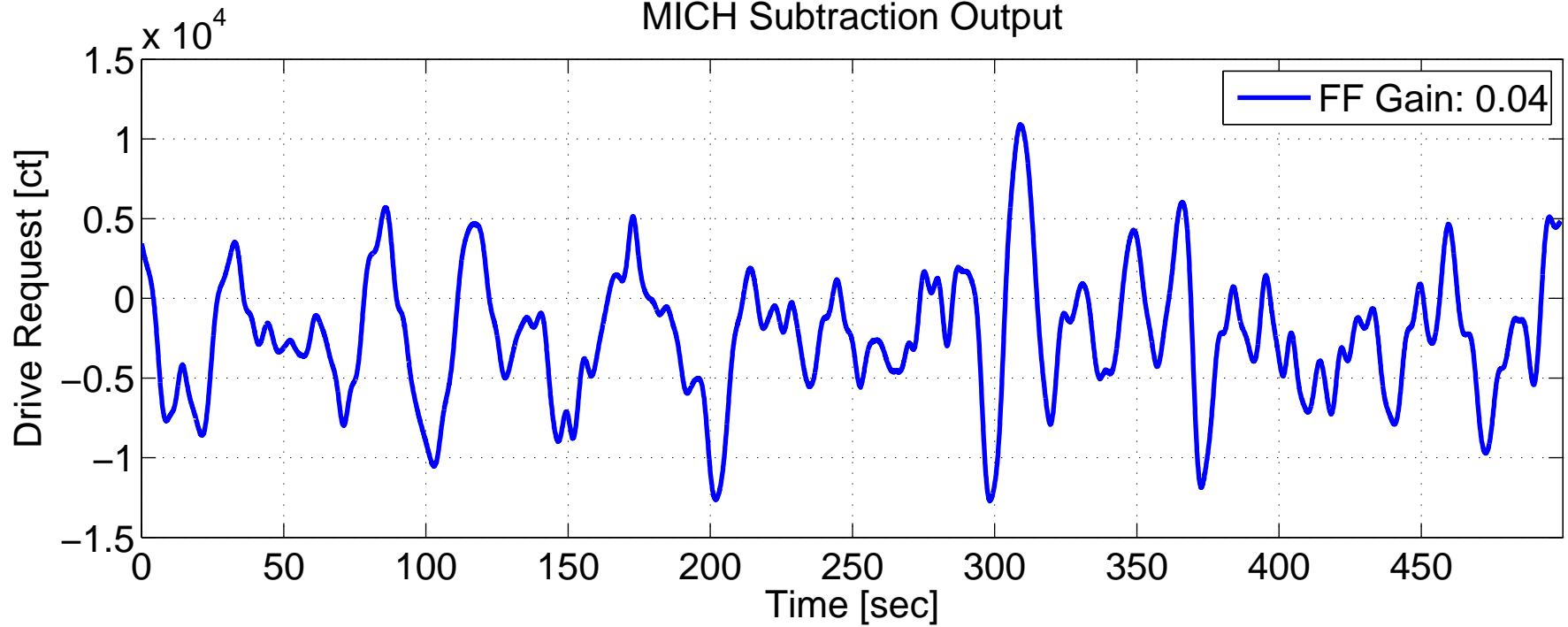
H1 DARM OLGTF, May 11 2015 15:50:43 UTC
POPAIR RF90 I, "SRC Reflectivity"



ASAIR RF90 I, "DRMI Recycling Gain"



H1 DARM OLGTF, May 11 2015 15:50:43 UTC
MICH Subtraction Output



SRCL Subtraction Output

