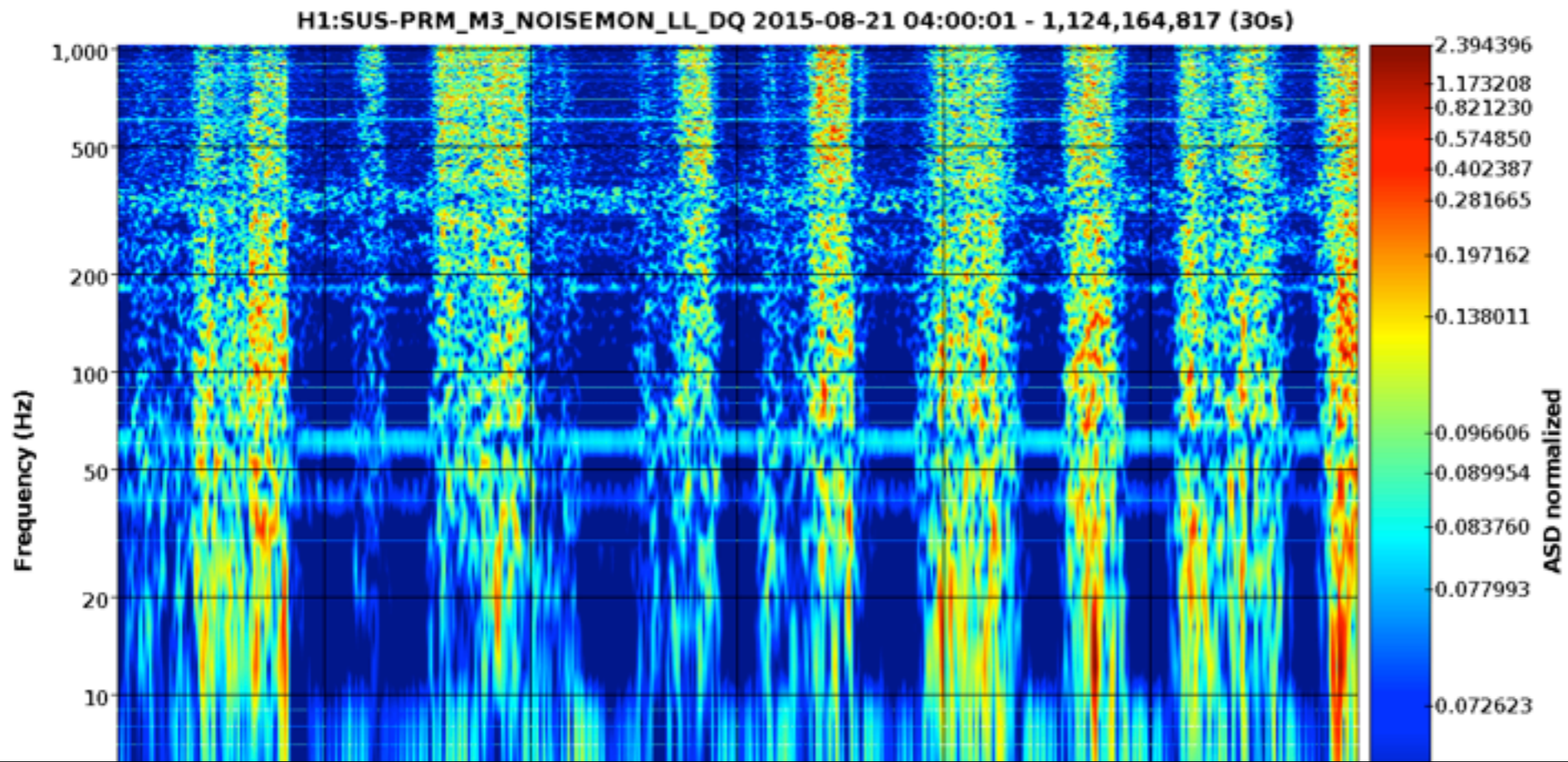
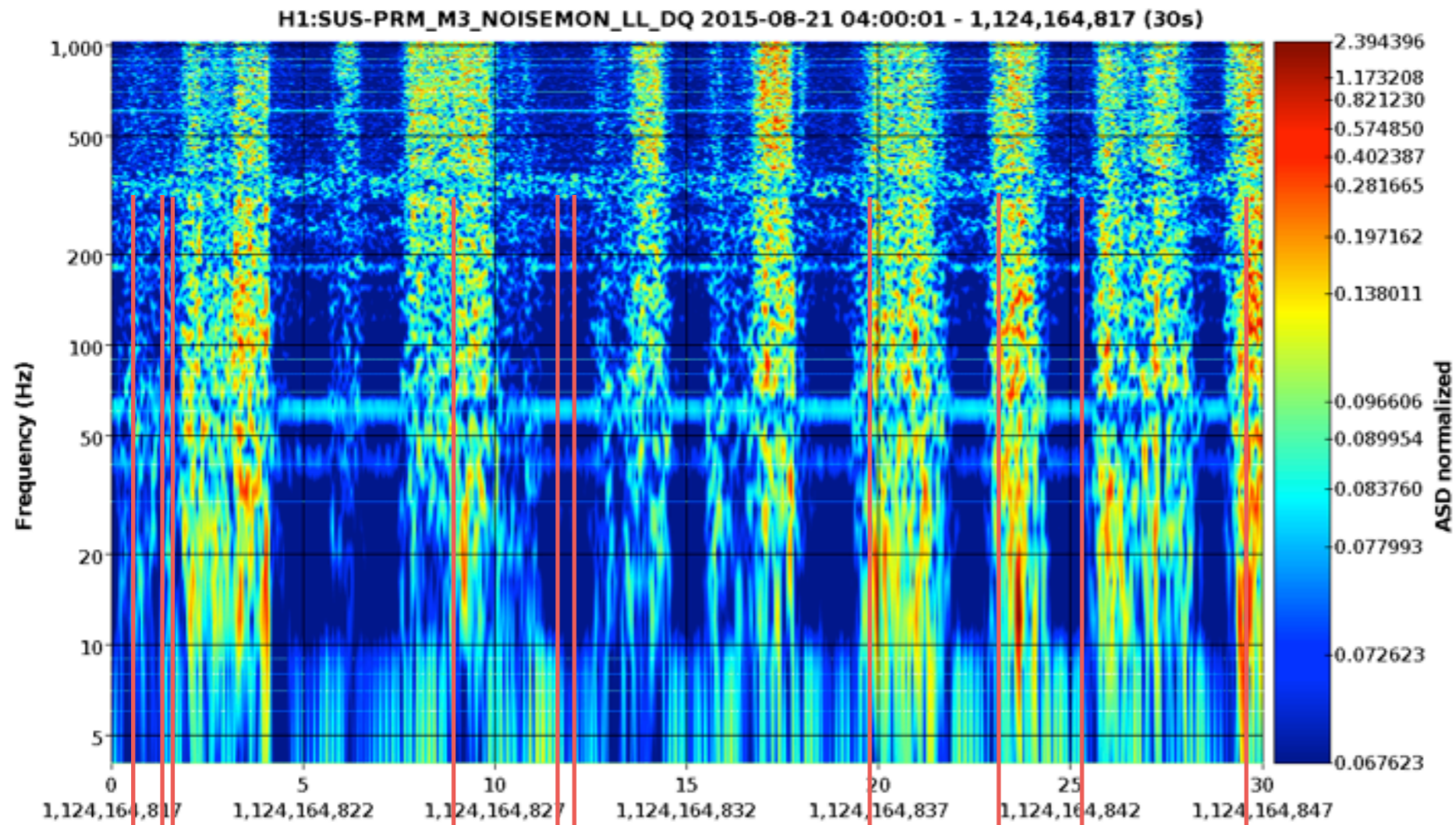
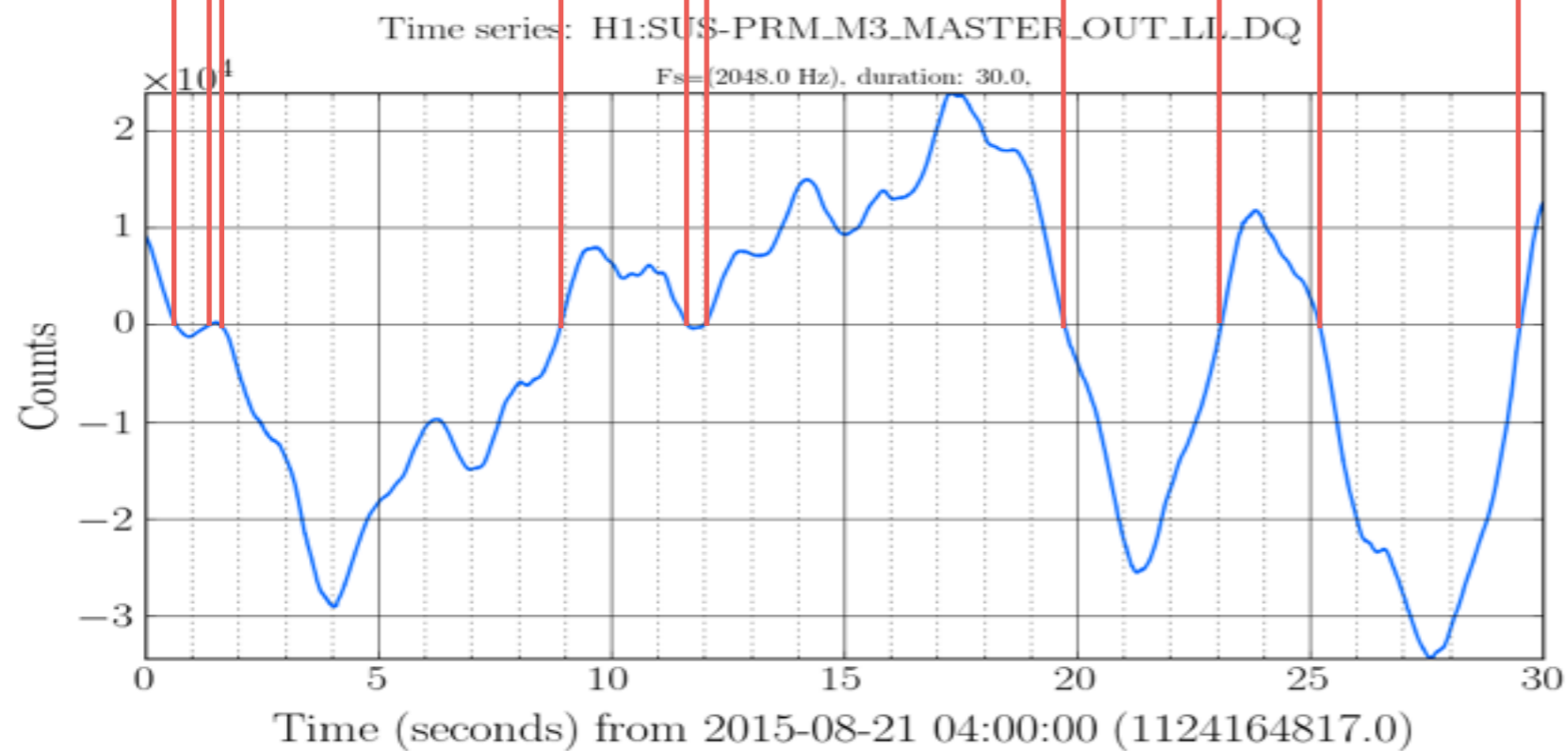


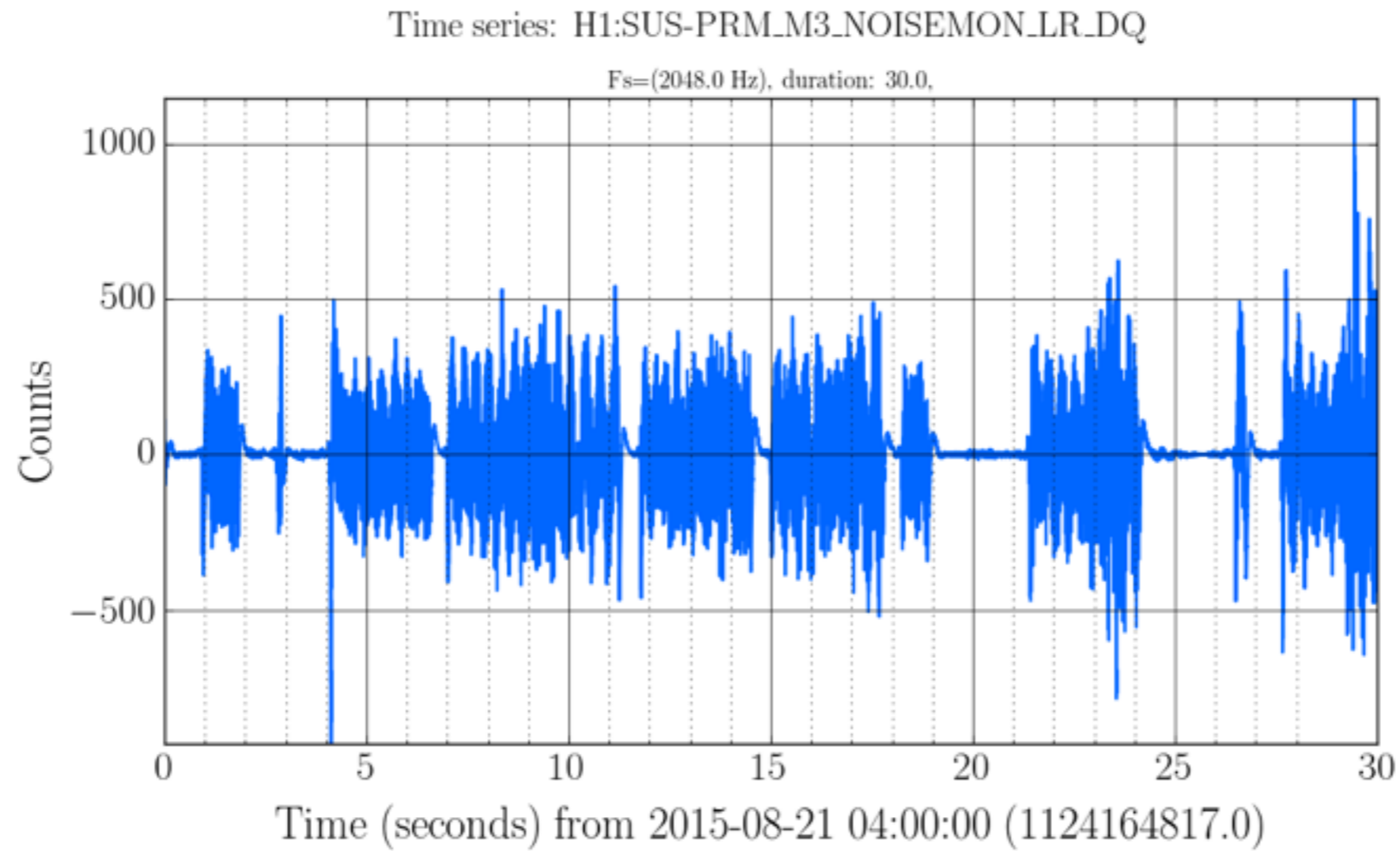
The excess noise is a shelf up to 70 Hz, goes below noise in drive signal around 100 Hz, but LL noisemon sees something full band. Either noisemon is nonlinear, or LL is making noise that isn't in the drive signal.





Probably not
DAC major-carry
glitches.
Zero crossings
do not line up.





LR noisemon is broken, probably ADC overflow or some saturation.