

Site Anthropogenic Noise Injections Follow-up

Robert Schofield, Nutsinee Kijbunchoo

For LIGO Detector Characterization Group

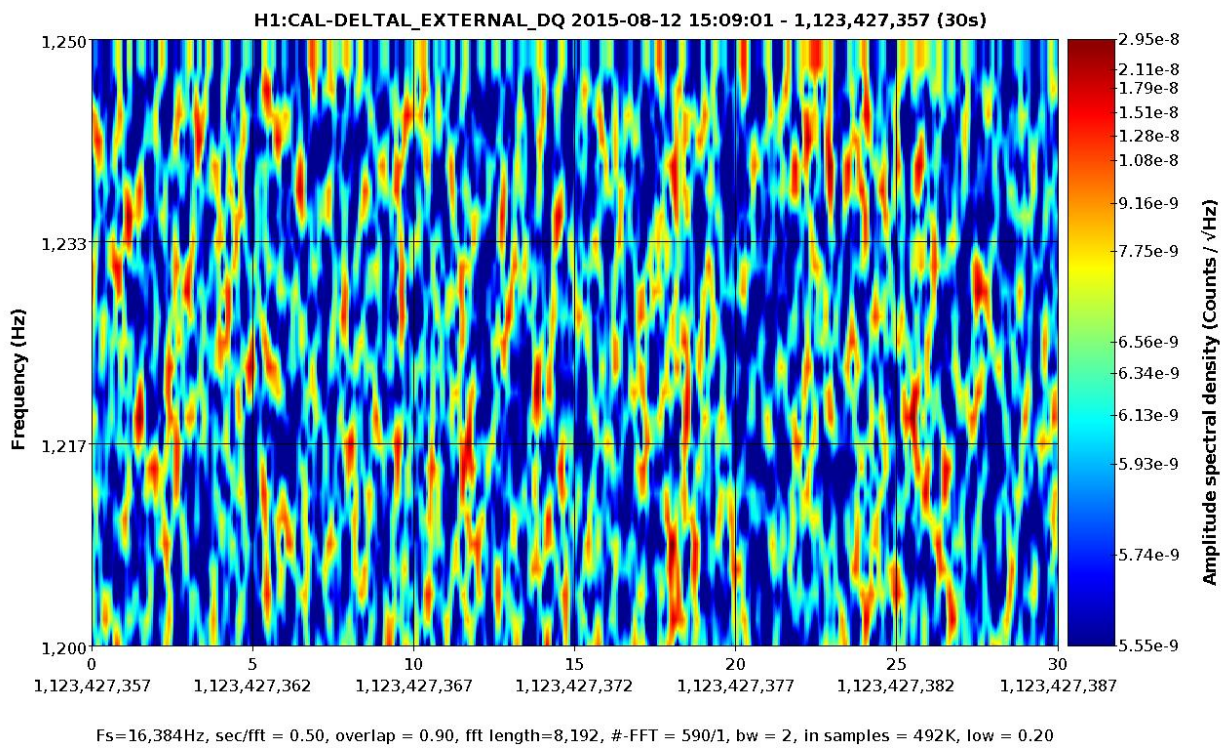
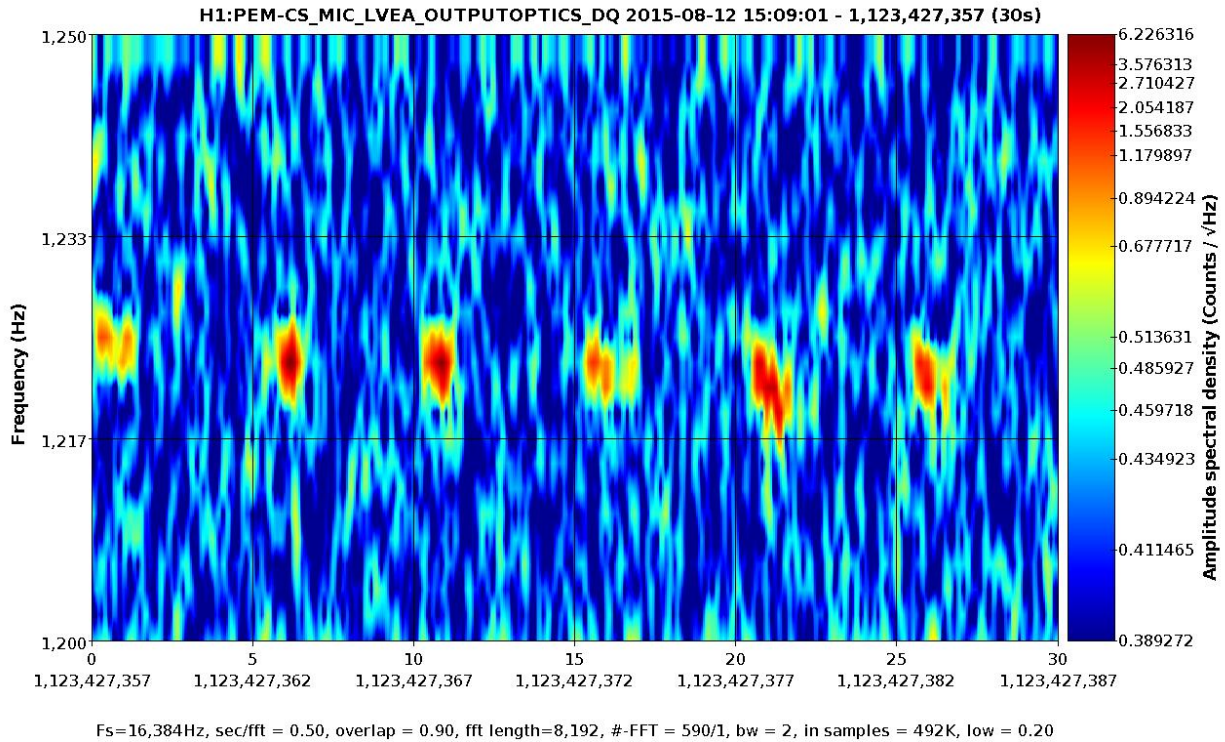
[LHO alog 20541](#), [DCC#G1501060](#)

Site Anthropogenic Noise Injections

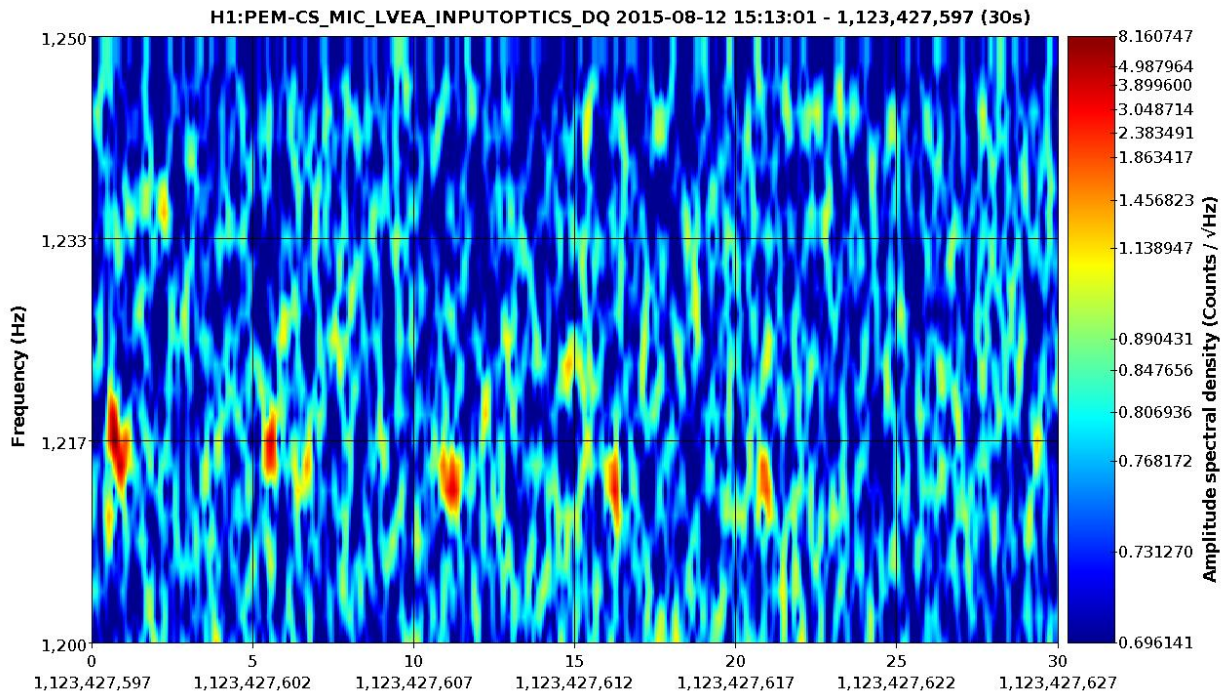
Injection	Time of first injection Aug. 12 UTC	Injection spacing (seconds)	Injection session duration and number of injection (seconds, number)
Truck (3808) horn at OSB receiving	15:09:00	5	30, 6
Truck (3808) horn at 2k electronics room building	15:13:00	5	30, 6
Truck (3808) sudden braking near 2k electronics building	15:16:00	5	30, 6
Quick human moves in the optics lab next to the input arm	15:23:00	5	60, 12
Human jumps in the change room	15:25:00	5	60, 12
Silver van horn, 2k electronics building area	17:04:00	5	30, 6
Silver van sudden brakes 2k electronics building area	17:05:00	5	30, 6
Silver van horn, high-bay area	17:08:00	5	30, 6
Silver van brakes high-bay area	17:10:00	5	30, 6
Car door slams, patio area	17:13:00	5	30, 6
Corolla car horn, parking area	17:16:00	5	30, 6

Truck horn at OSB receiving (Aug 12 15:09:00 UTC)

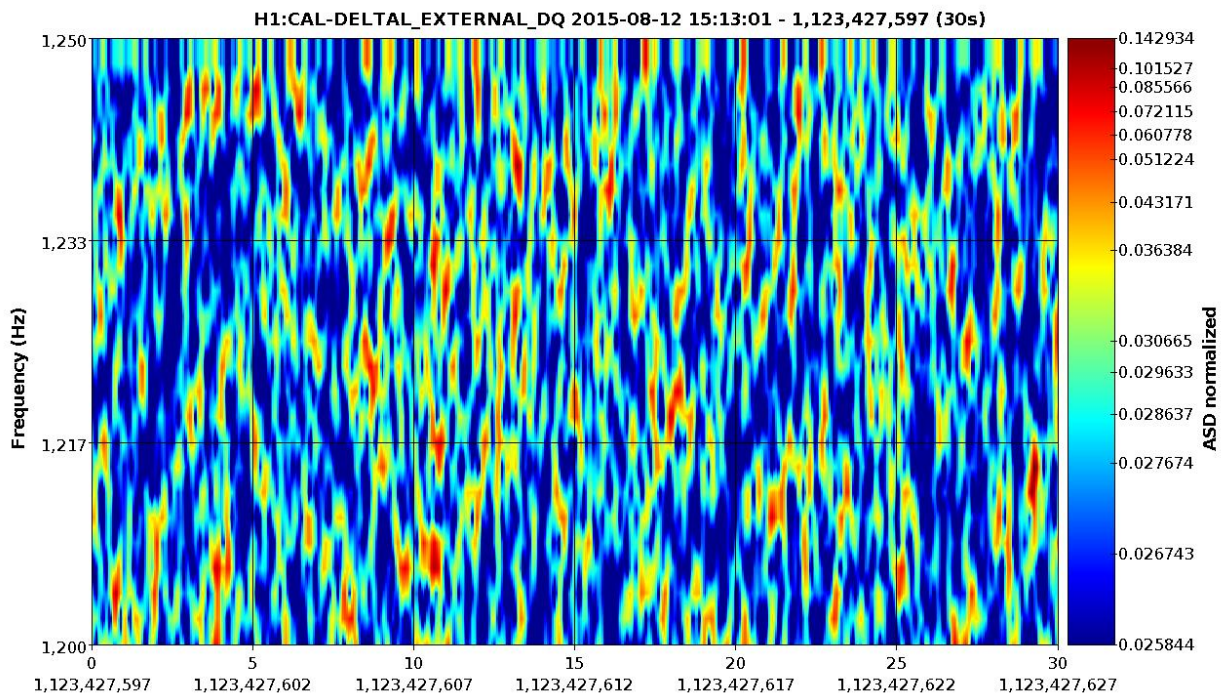
I also looked for any possible up/down conversion in DARM from 1Hz to 5000Hz. I saw nothing.



Truck horn at 2k electronics room (Aug 12 15:13:00 UTC)



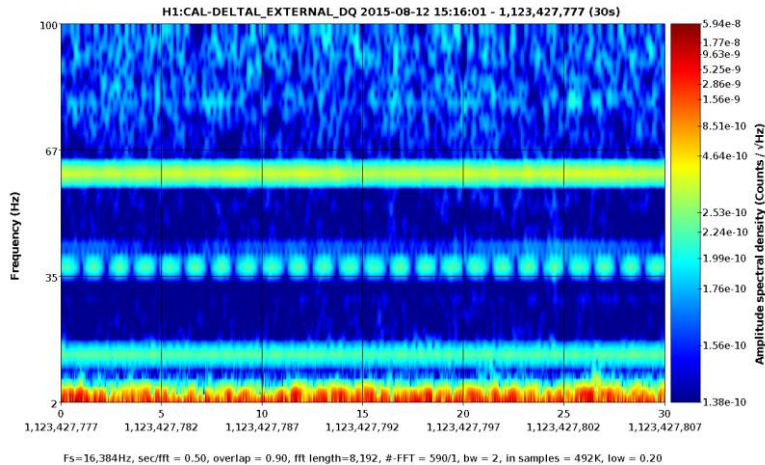
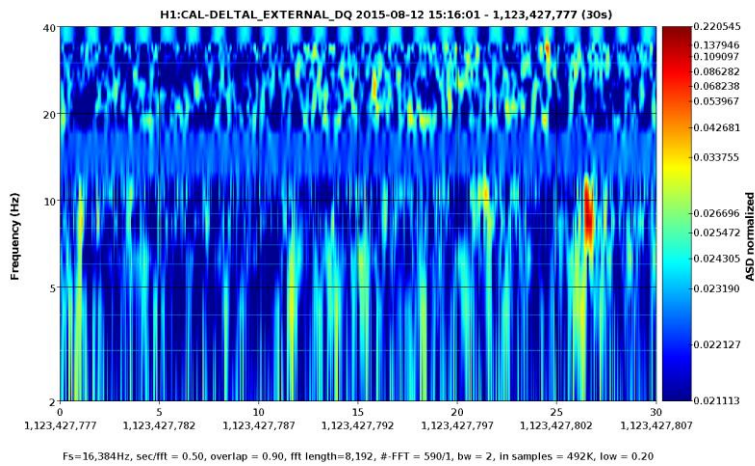
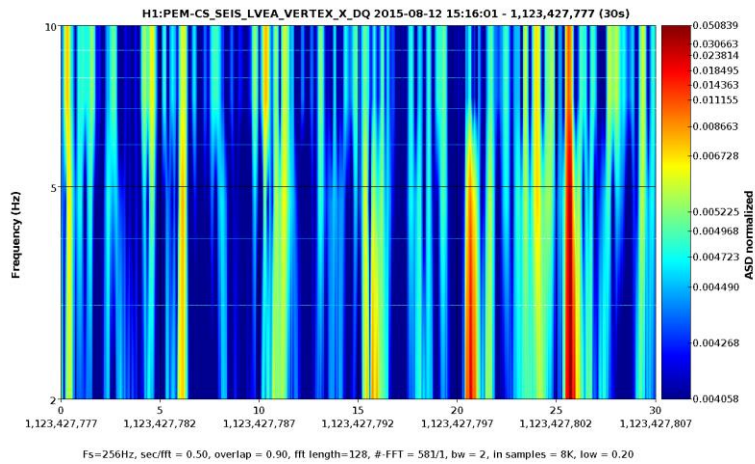
Fs=16,384Hz, sec/fft = 0.50, overlap = 0.90, fft length=8,192, #-FFT = 590/1, bw = 2, in samples = 492K, low = 0.20



Fs=16,384Hz, sec/fft = 0.50, overlap = 0.90, fft length=8,192, #-FFT = 590/1, bw = 2, in samples = 492K, low = 0.20

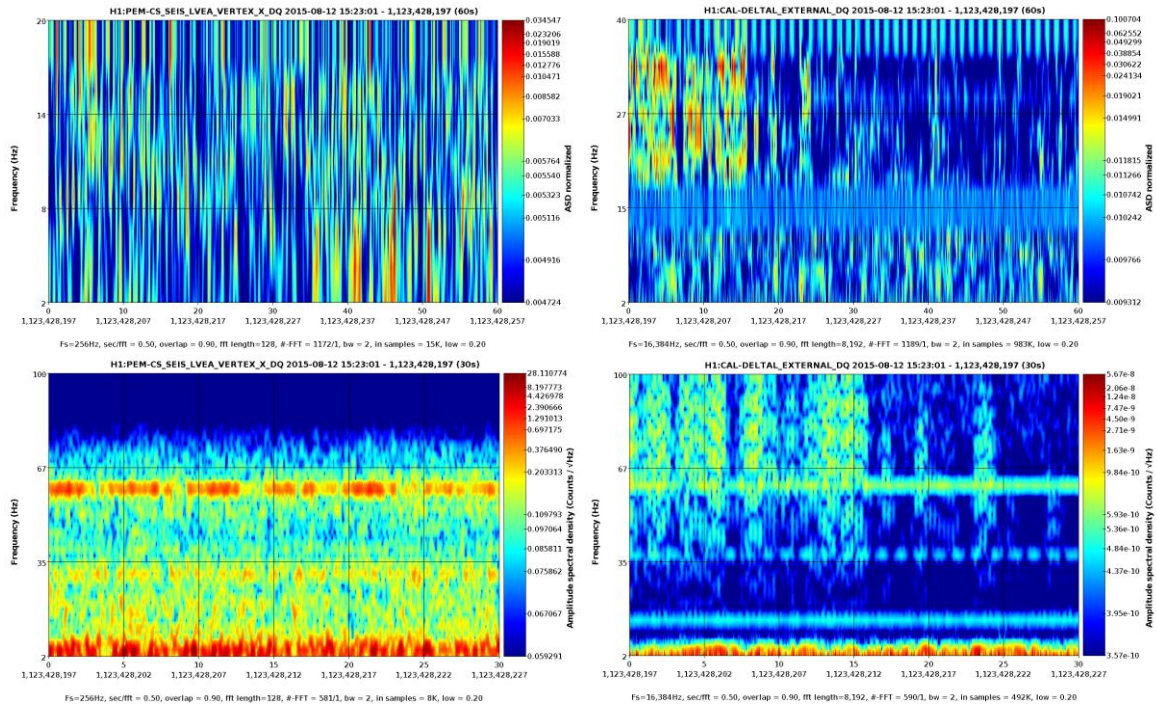
Truck sudden brakes near 2k electronics building (Aug 12 15:16:00 UTC)

No clear evidence of DARM coupling. I have also looked for any possible up/down conversion in DARM from 1Hz to 500Hz.

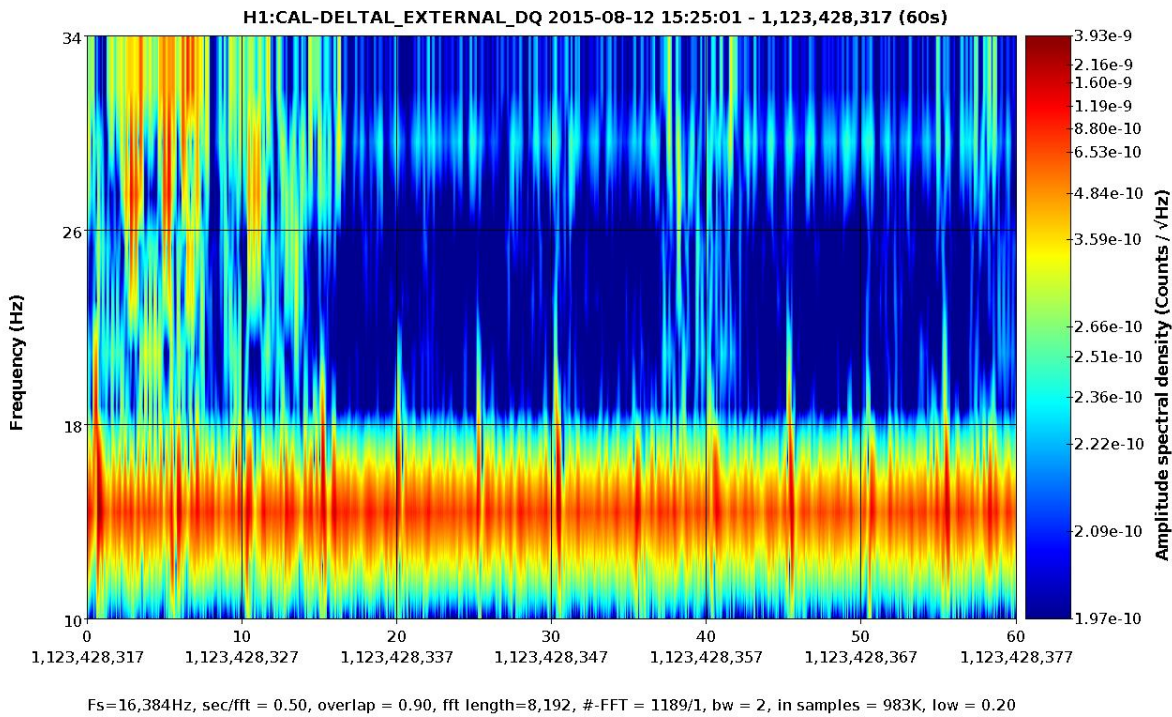
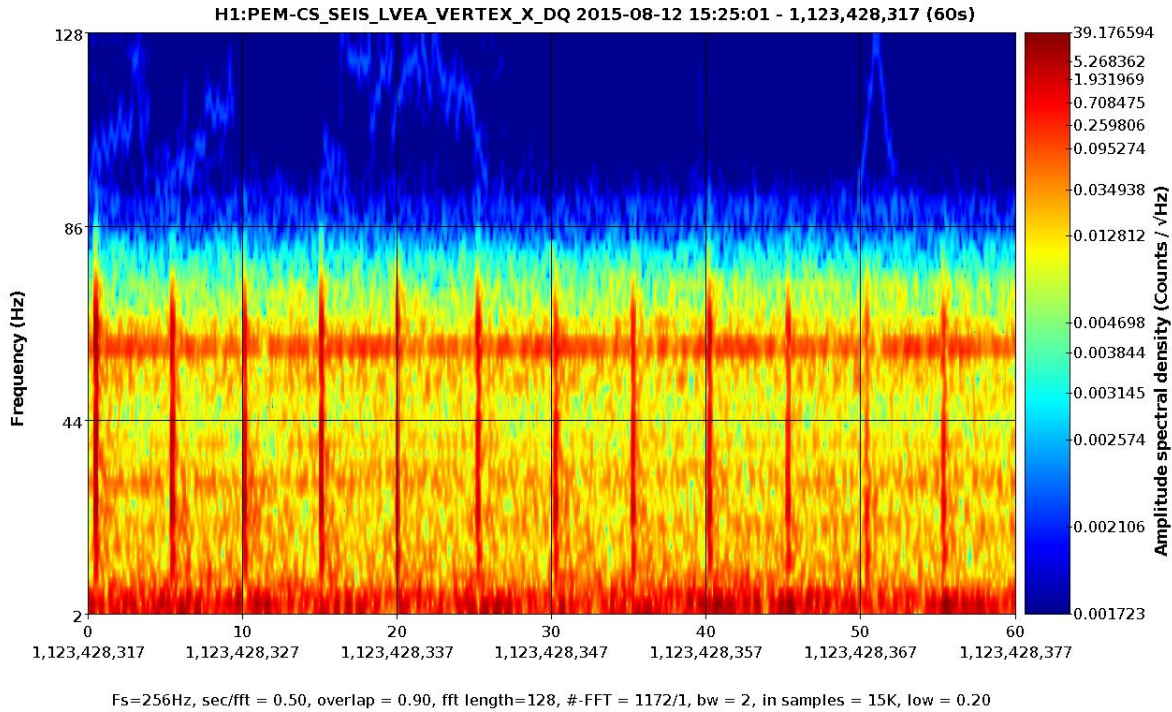


Quick human moves in the optics lab (Aug 12 15:23:00 UTC)

Not visible in neither DARM nor PEM seismometer

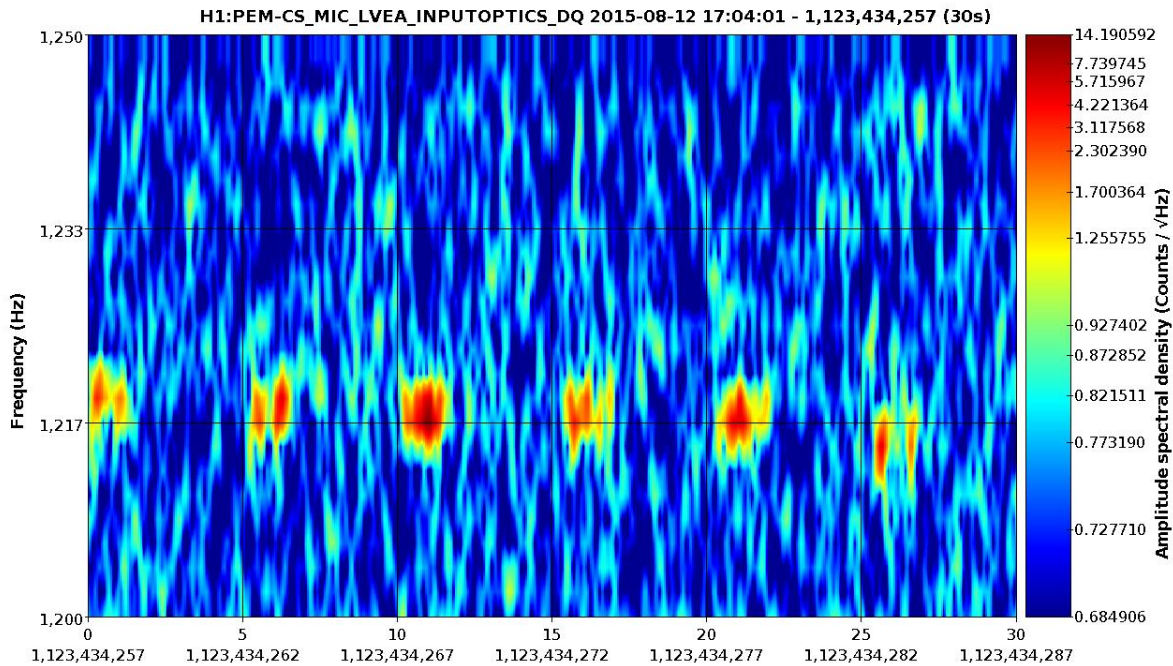


Human jumps in the change room (Aug 12 15:25:00 UTC)

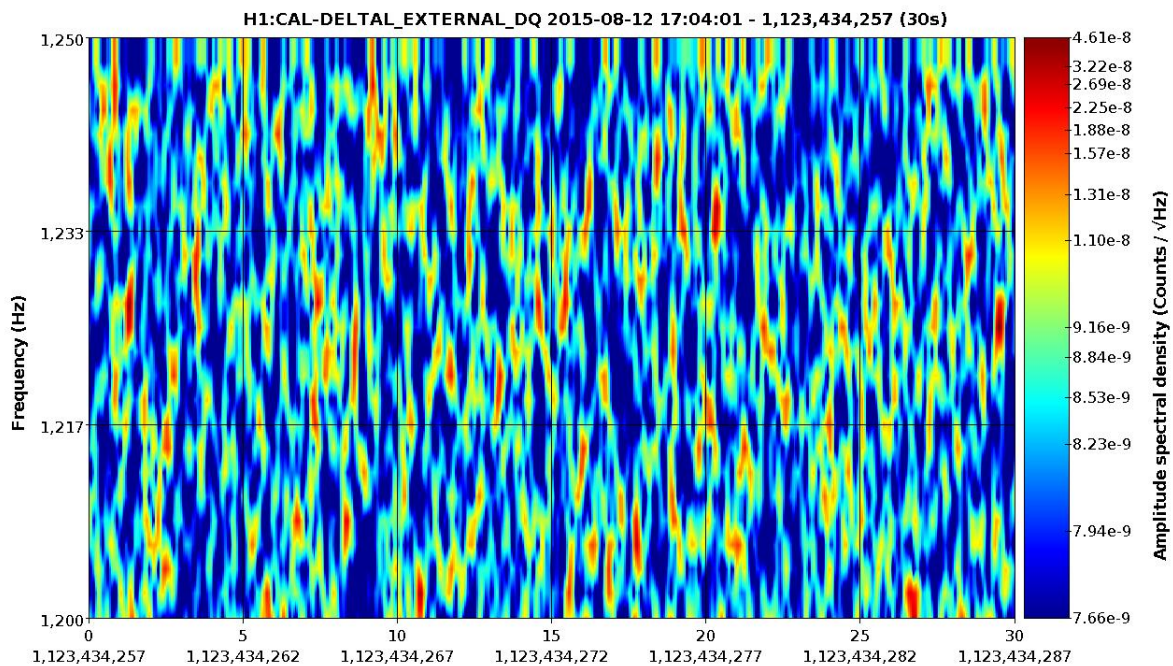


Silver van horn, 2k electronics building area (Aug 12 17:04:00 UTC)

No up/down conversion found between 600-2000 Hz

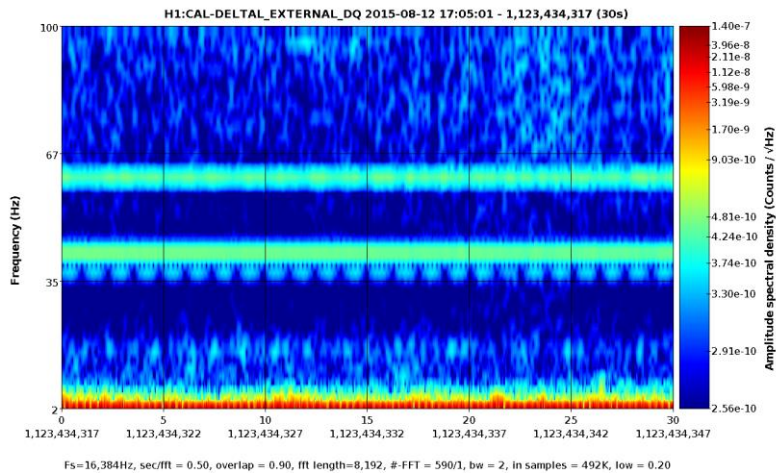
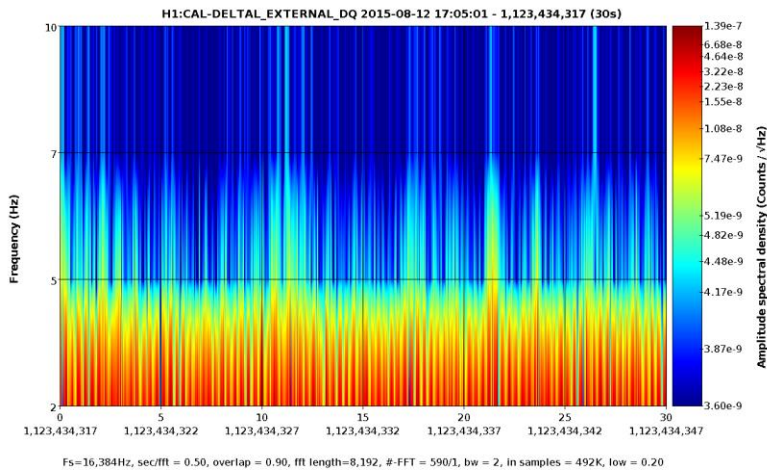
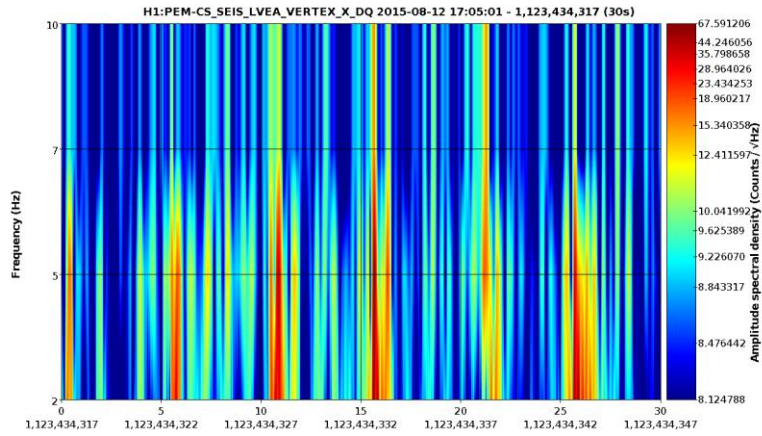


Fs=16,384Hz, sec/fft = 0.50, overlap = 0.90, fft length=8,192, #-FFT = 590/1, bw = 2, in samples = 492K, low = 0.20

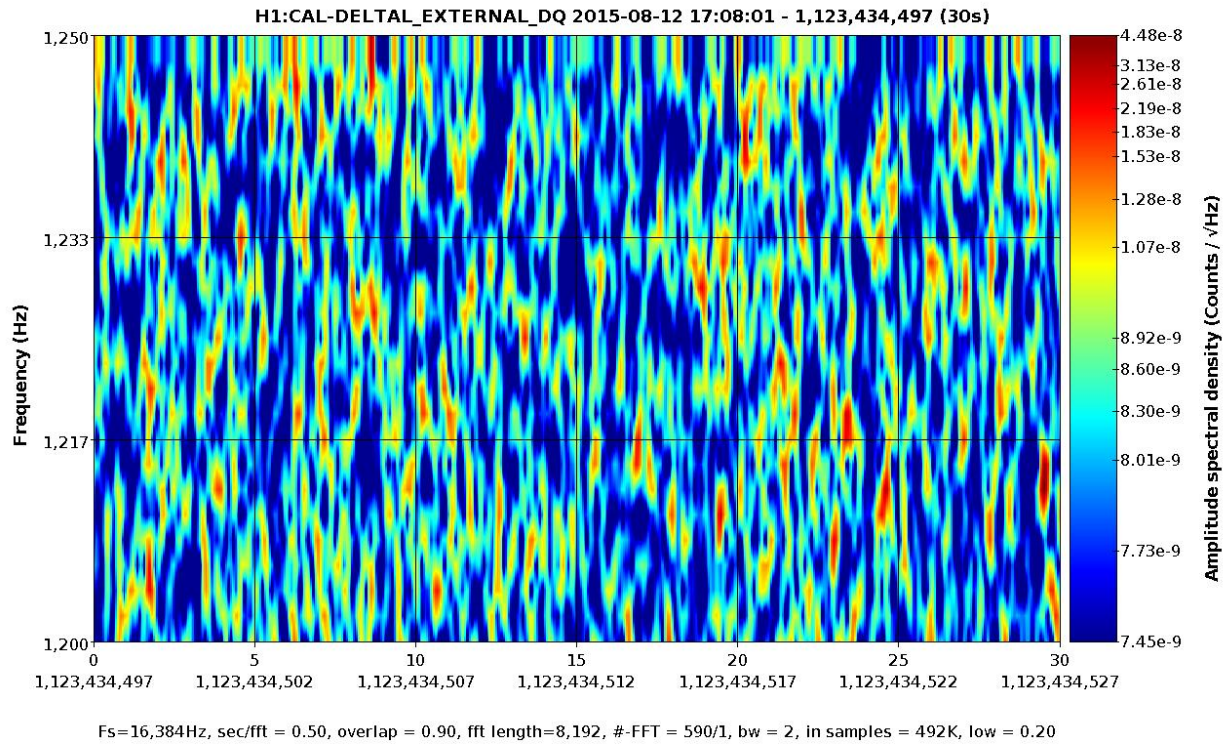
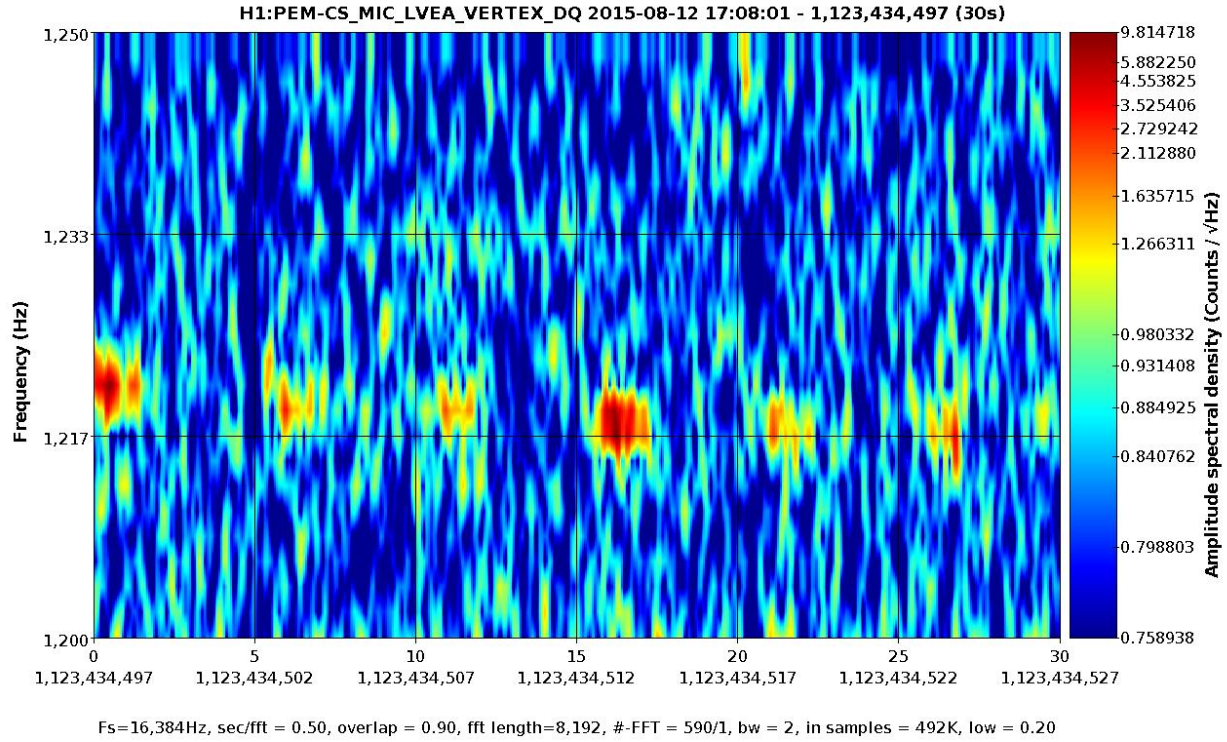


Fs=16,384Hz, sec/fft = 0.50, overlap = 0.90, fft length=8,192, #-FFT = 590/1, bw = 2, in samples = 492K, low = 0.20

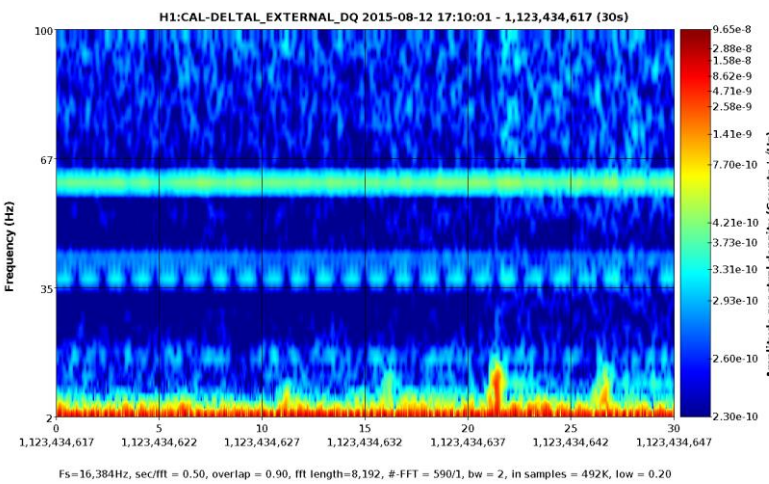
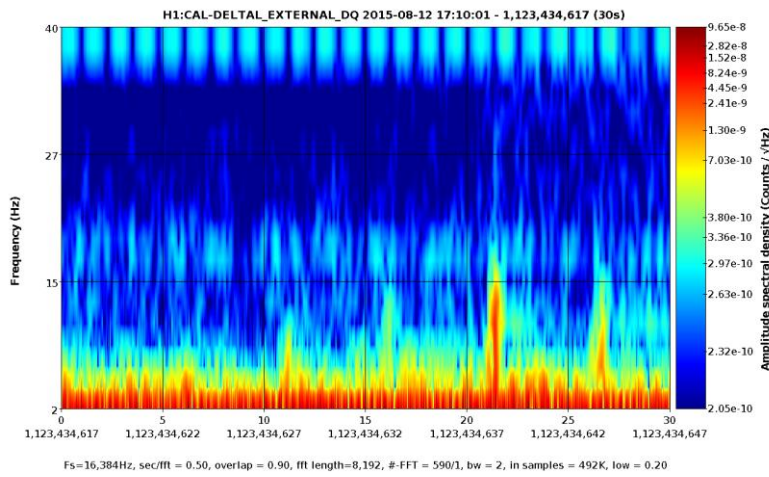
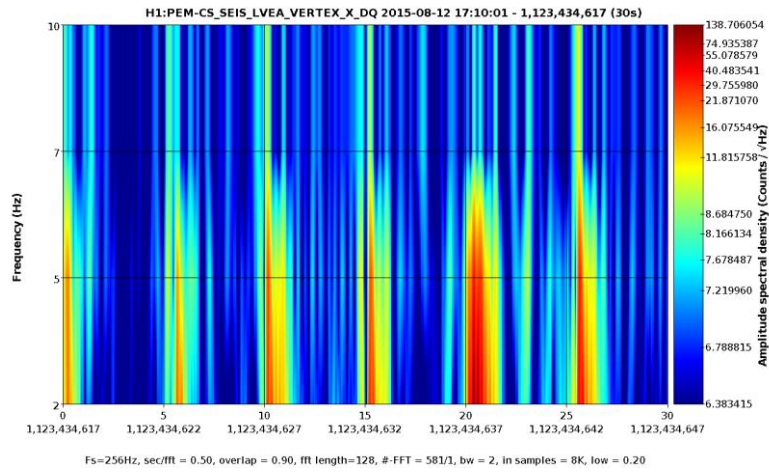
Silver van sudden brakes, 2k electronics building area (Aug 12 17:05:00 UTC)



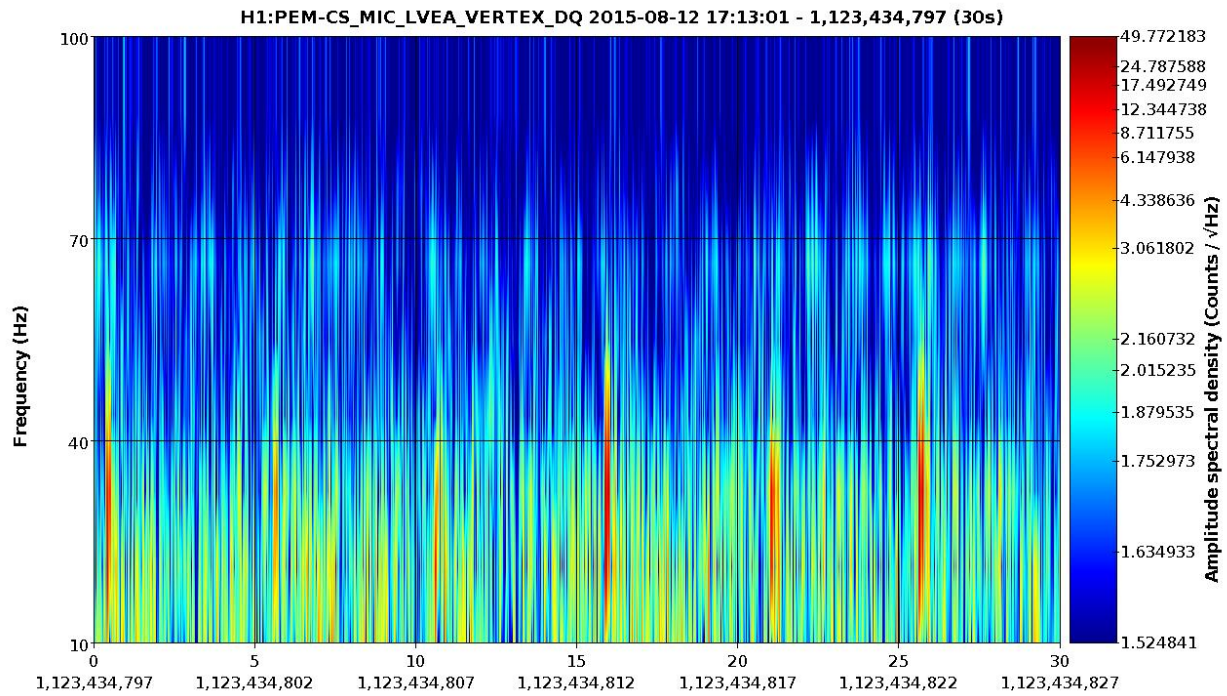
Silver van horn, high-bay area (Aug 12 17:08:00 UTC)



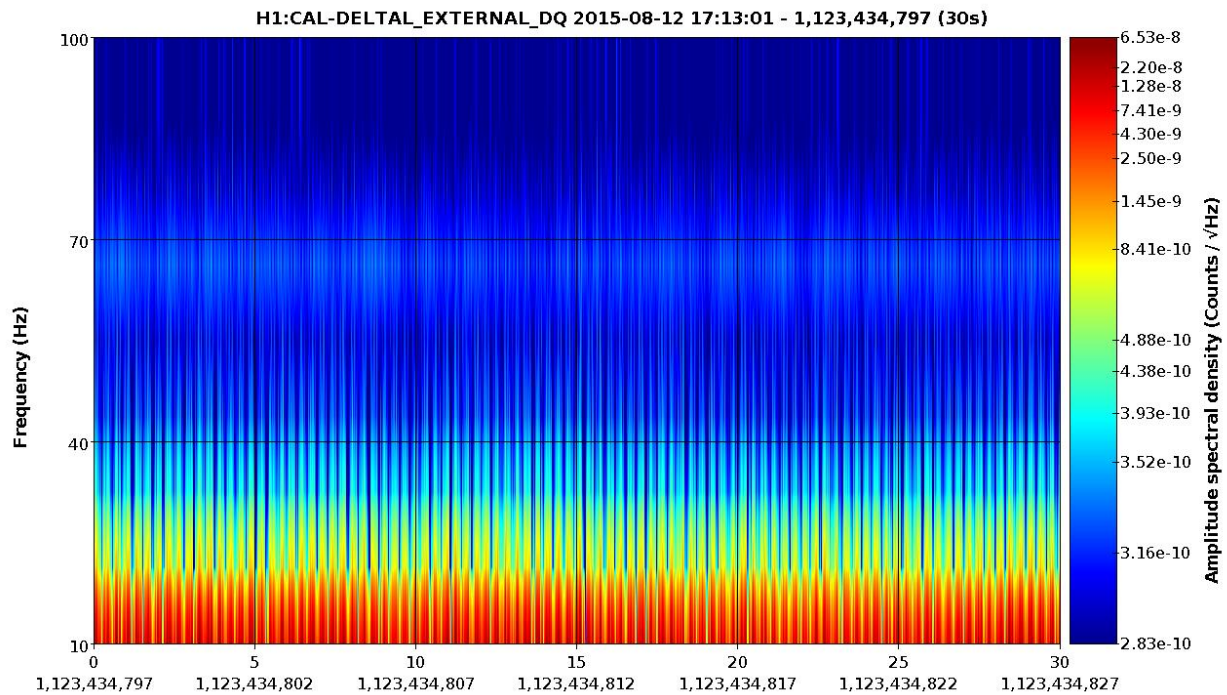
Silver van brakes, high-bay area (Aug 12 17:10:00 UTC)



Car door slams, patio area (Aug 12 17:13:00 UTC)



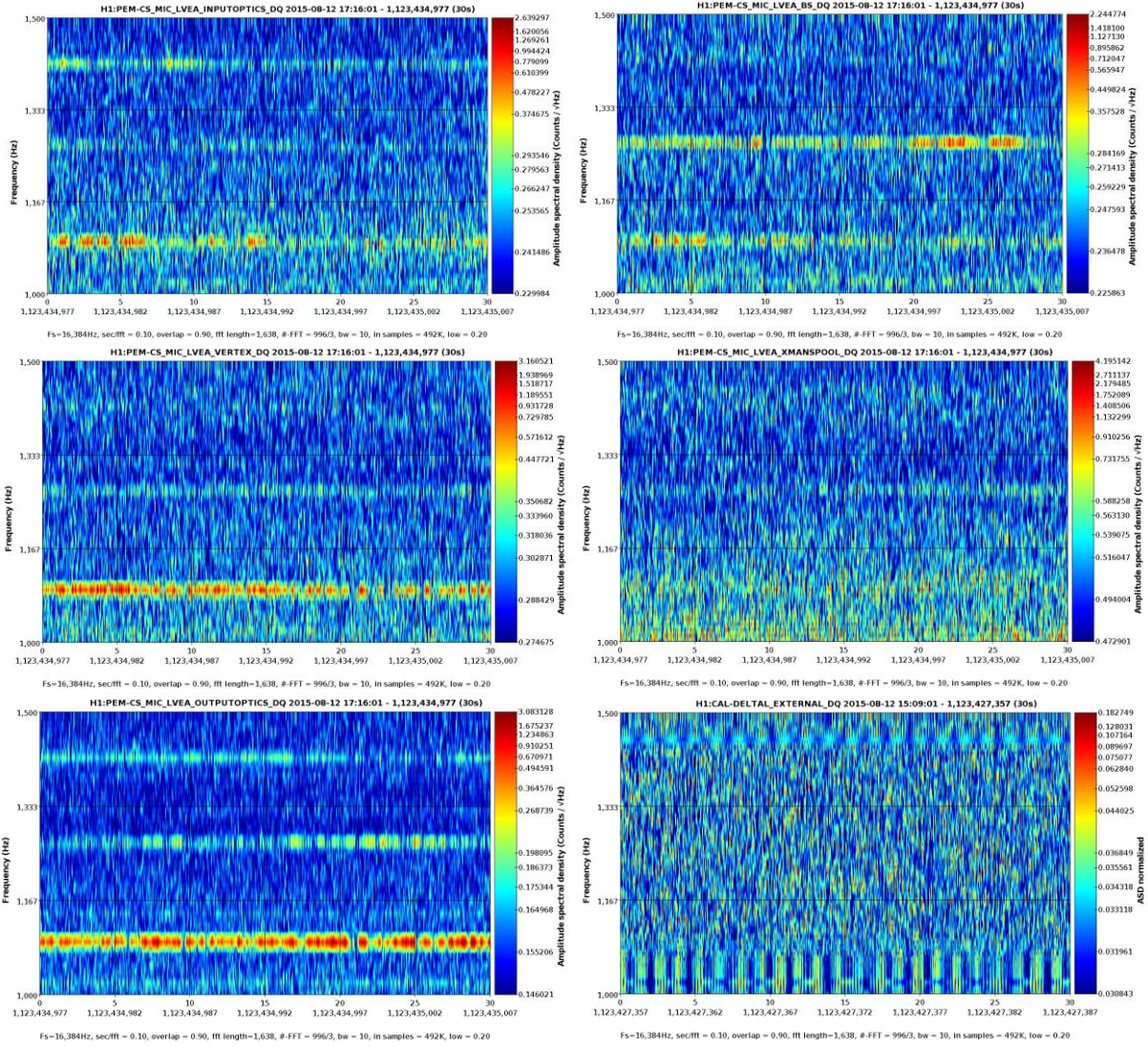
Fs=16,384Hz, sec/fft = 0.10, overlap = 0.90, fft length=1,638, #-FFT = 996/3, bw = 10, in samples = 492K, low = 0.20



Fs=16,384Hz, sec/fft = 0.10, overlap = 0.90, fft length=1,638, #-FFT = 996/3, bw = 10, in samples = 492K, low = 0.20

Corolla car horn, parking area (Aug 12 17:16:00 UTC)

Not visible in any of the microphones in the LVEA.



Conclusion

Coupled into DARM: Human jumps in the change room, Car sudden breaks near 2k electronics and high-bay area.

No evidence of being coupled into DARM: Car horn, human moves in the optics lab, car door slams.