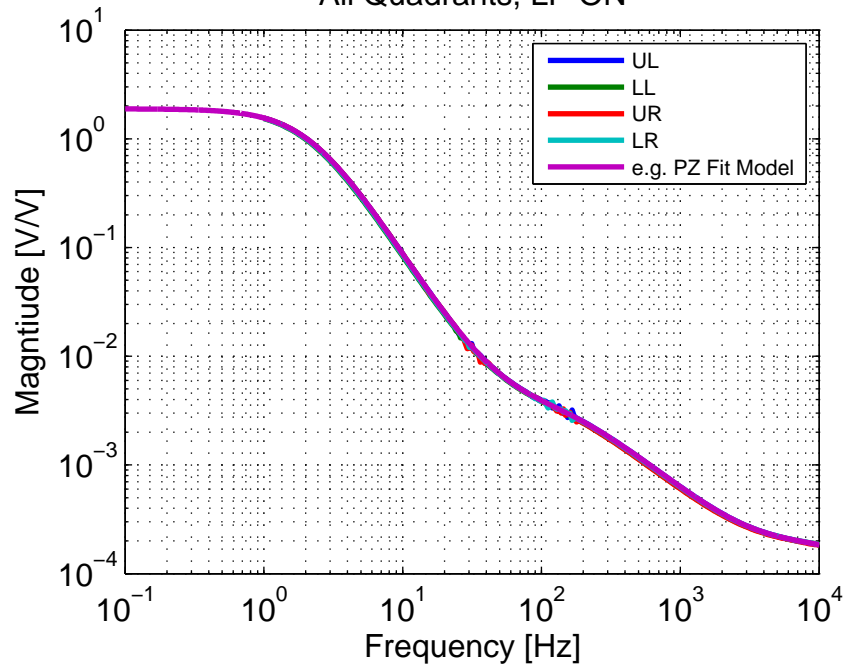
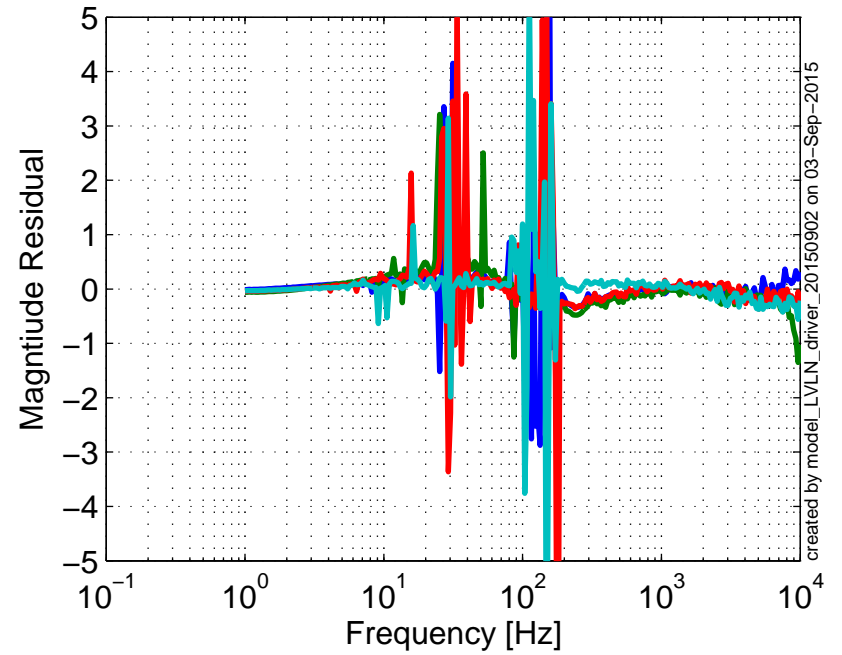
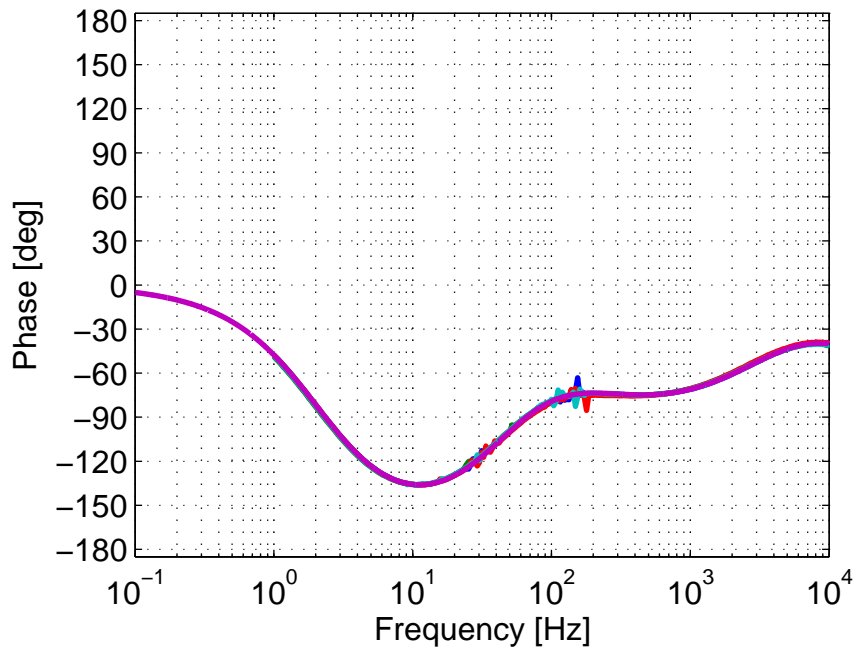
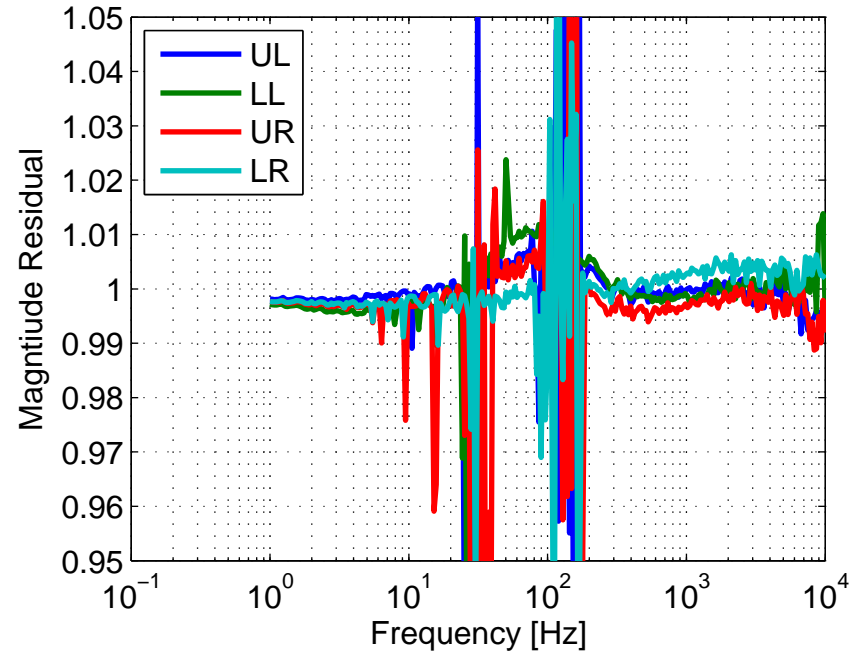


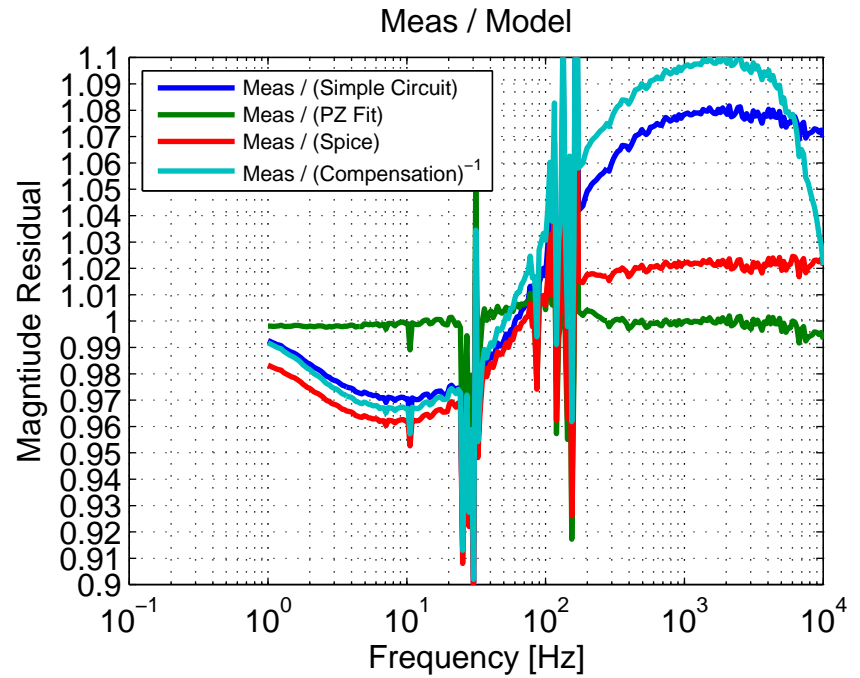
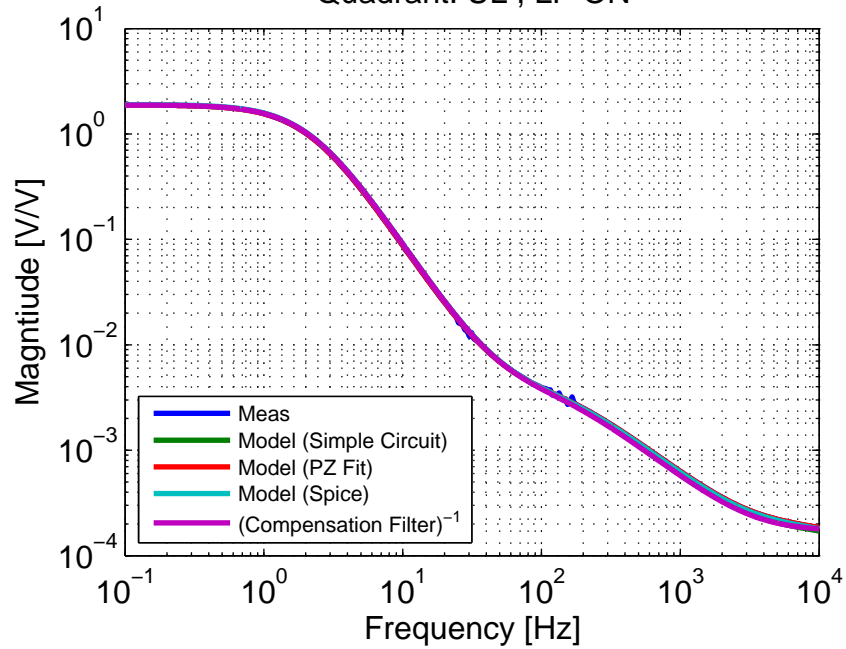
2015-05-22 H1SUS ETMY ESD LVLN Driver
All Quadrants, LP ON



Meas / Model

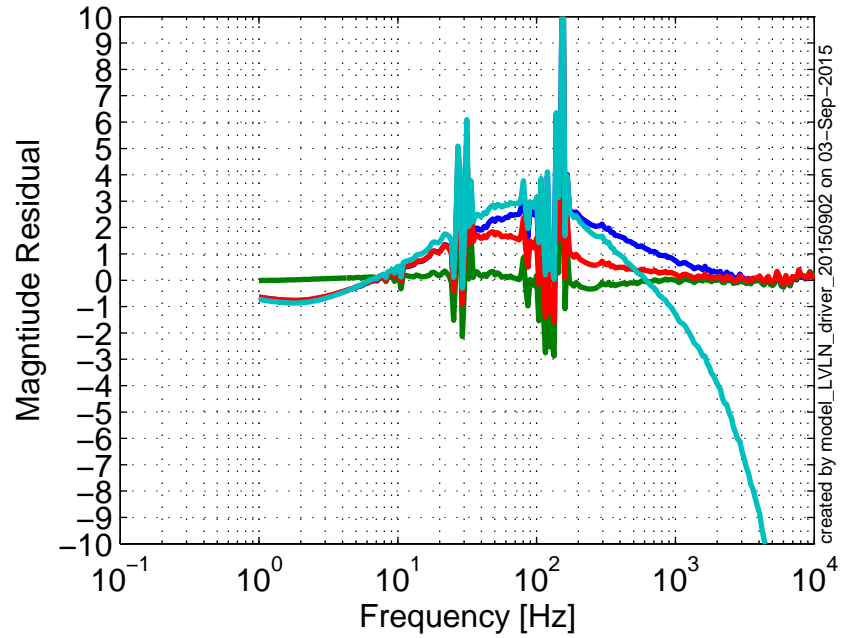
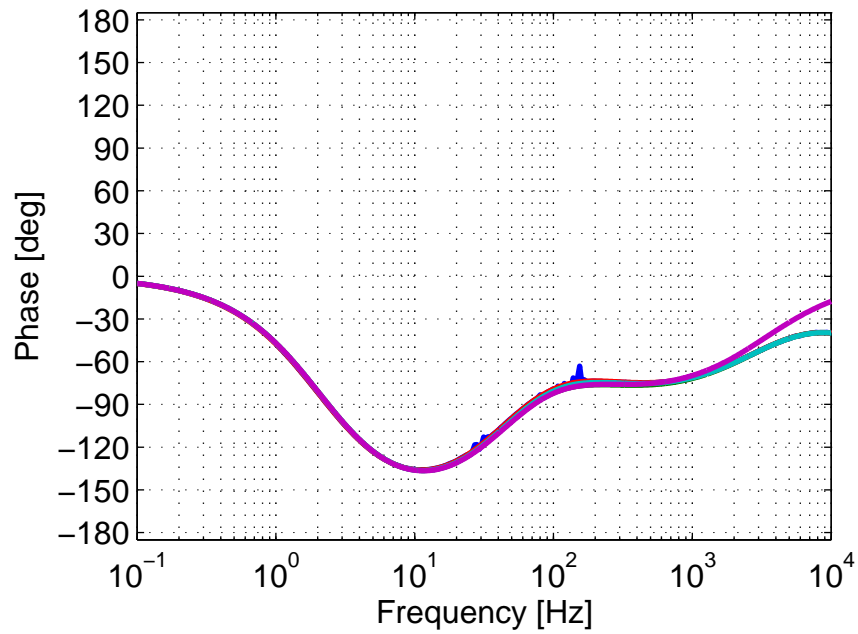


2015-05-22 H1SUSETMY ESD LVLN Driver
 Quadrant: UL , LP ON

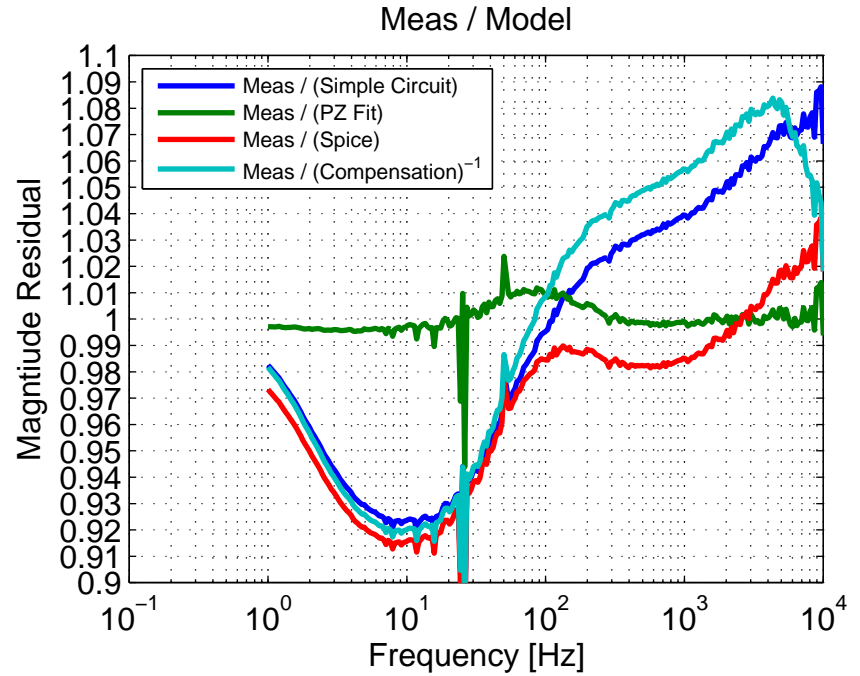
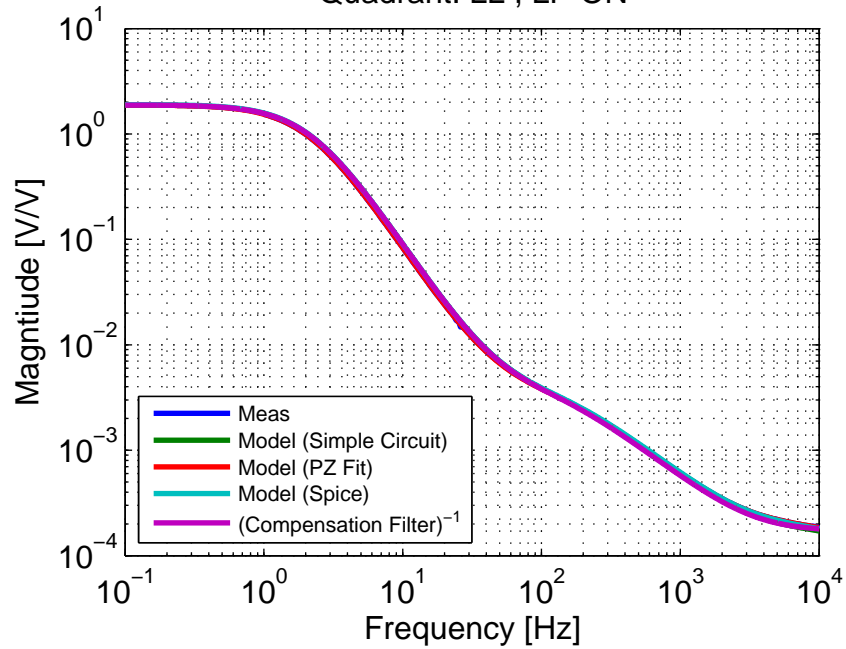


Fit Poles: (2.16 2.16 165 24000) Hz
 Comp Poles: (2.2 2.2 152) Hz

Fit Zeros: (48.8 48.8 3200) Hz
 Comp Zeros: (50 50 3250) Hz

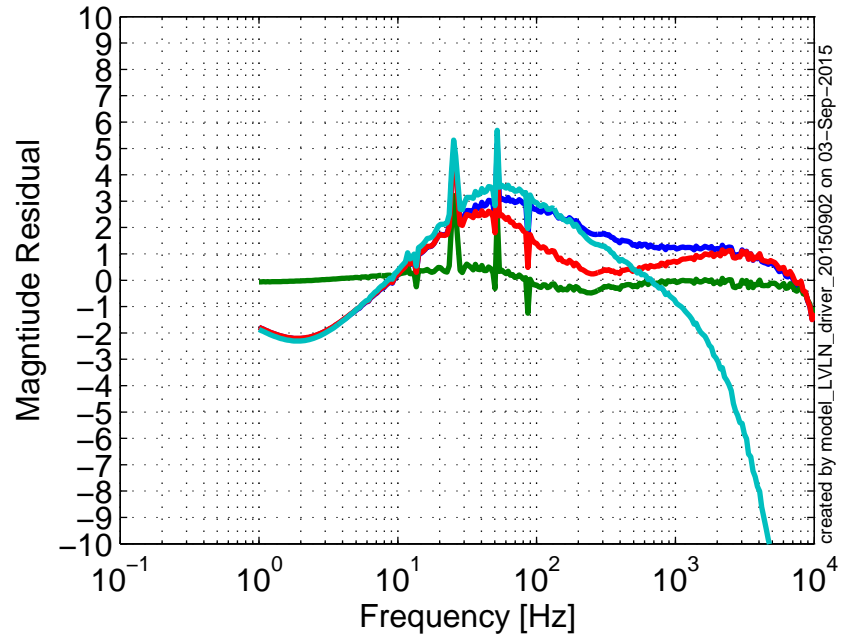
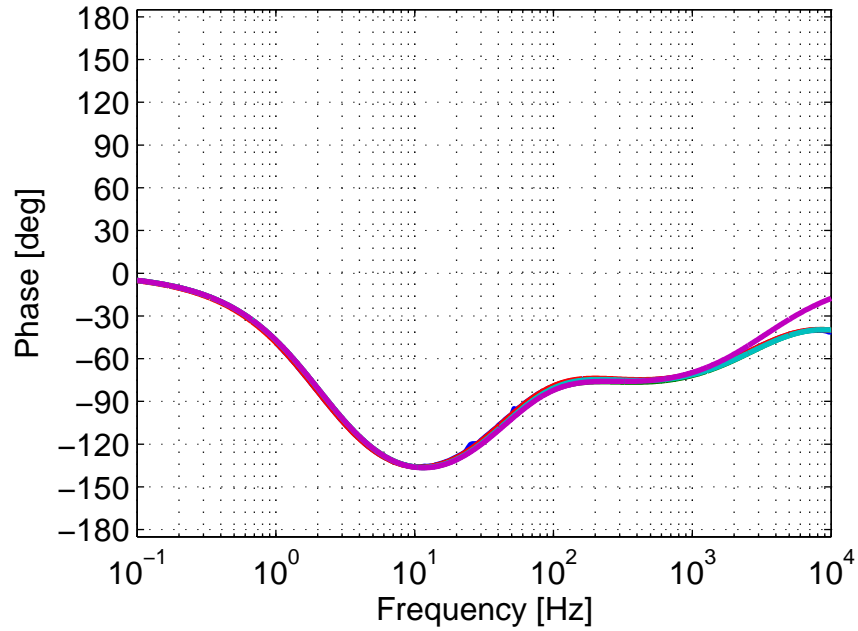


2015-05-22 H1SUSETMY ESD LVLN Driver
 Quadrant: LL , LP ON

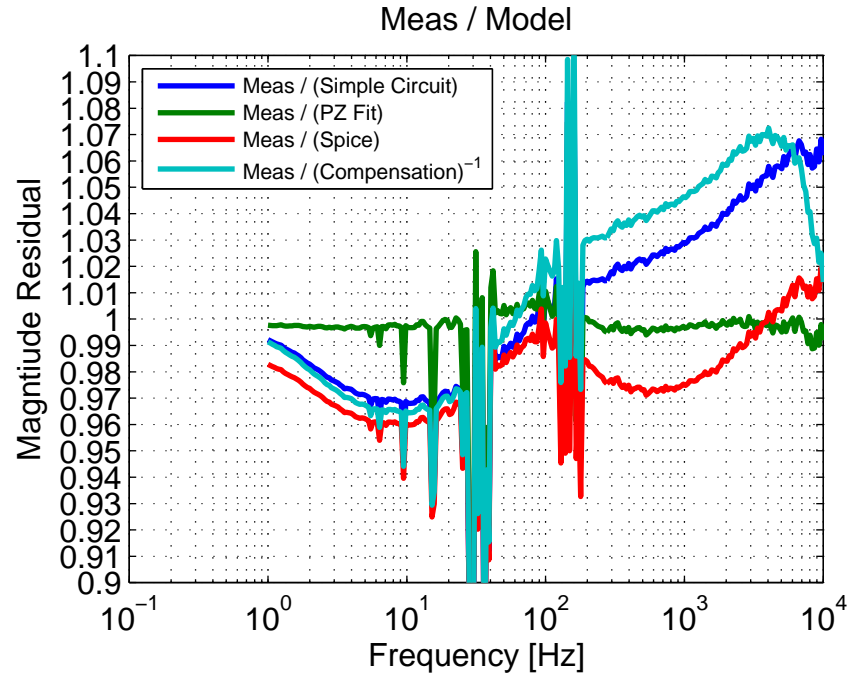
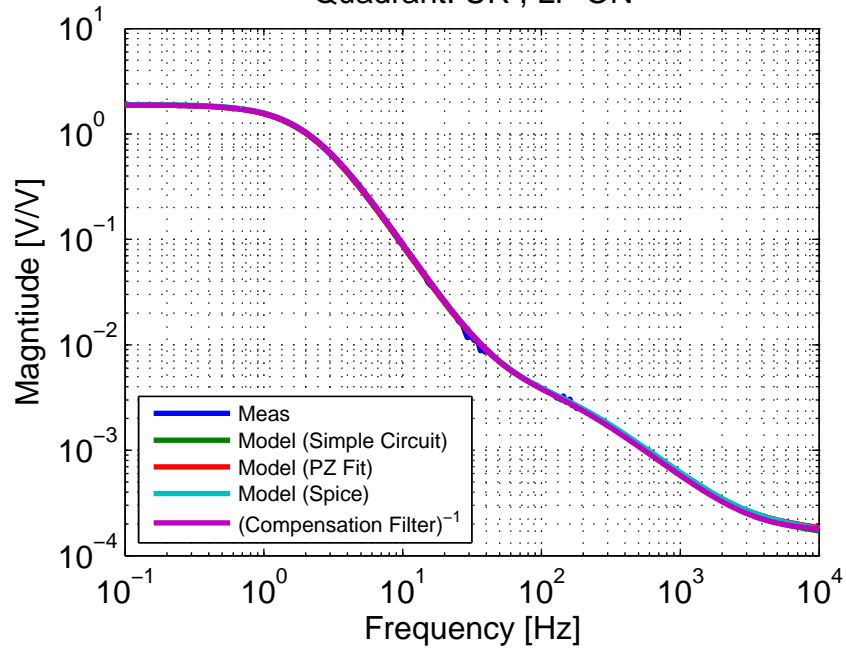


Fit Poles: (2.105 2.105 160 23000) Hz
 Comp Poles: (2.2 2.2 152) Hz

Fit Zeros: (47.8 47.8 3050) Hz
 Comp Zeros: (50 50 3250) Hz

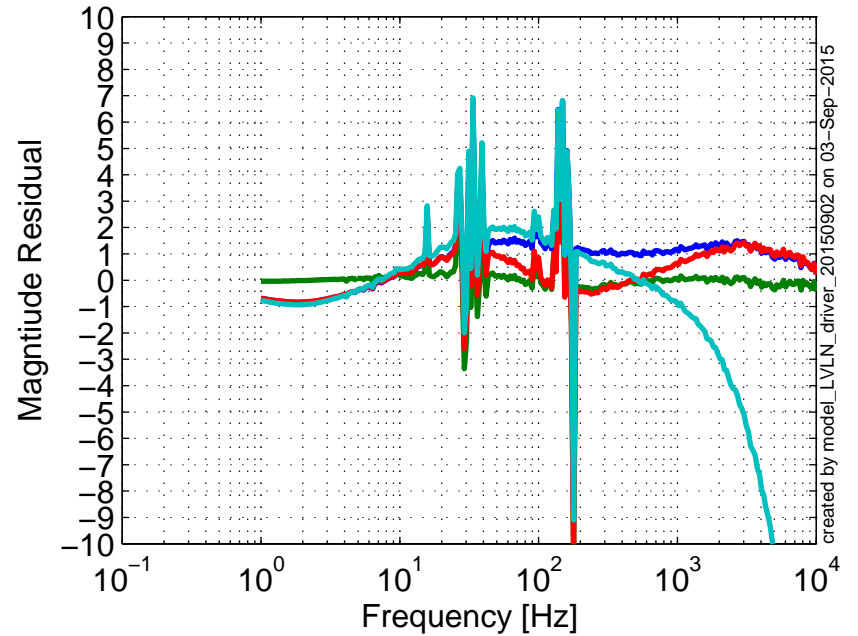
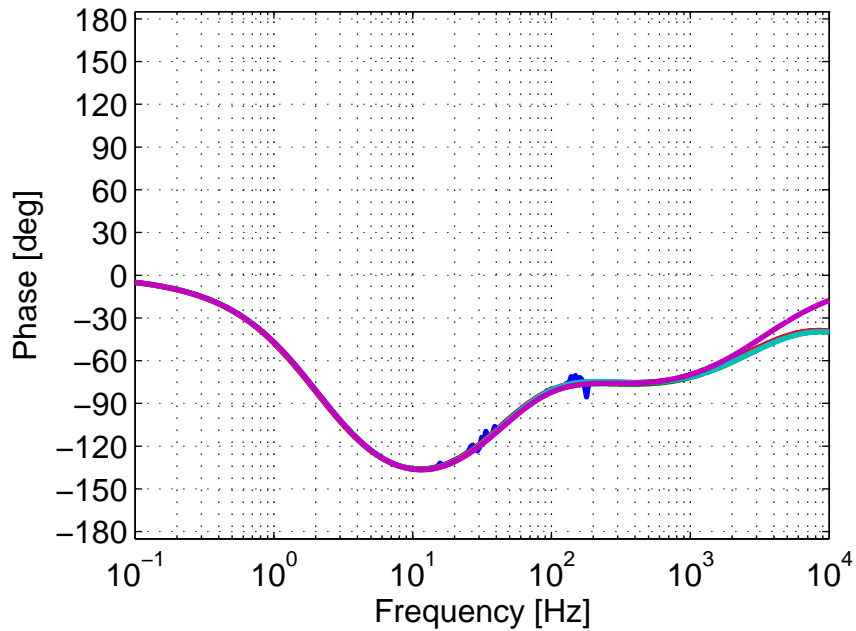


2015-05-22 H1SUSETMY ESD LVLN Driver
 Quadrant: UR , LP ON

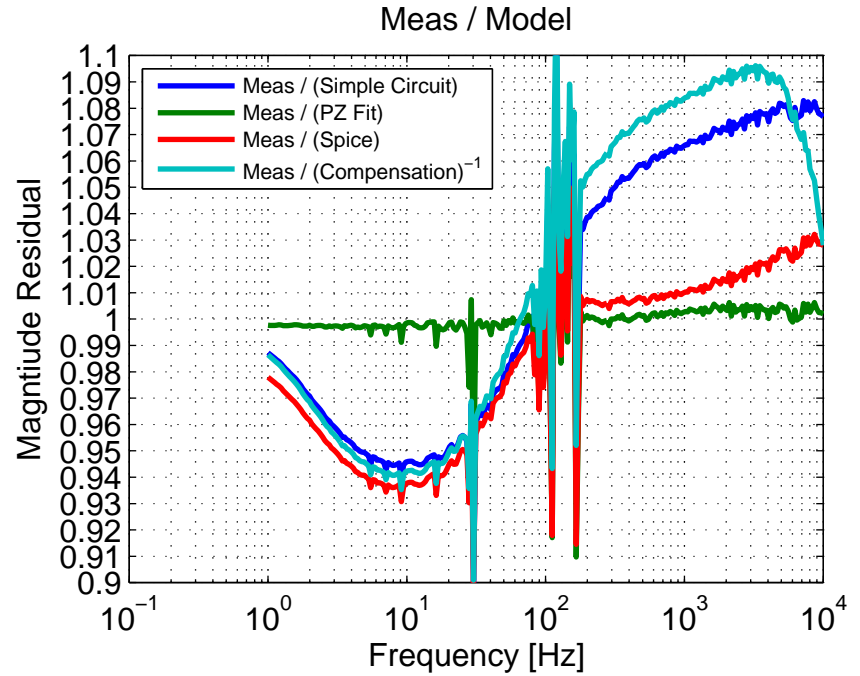
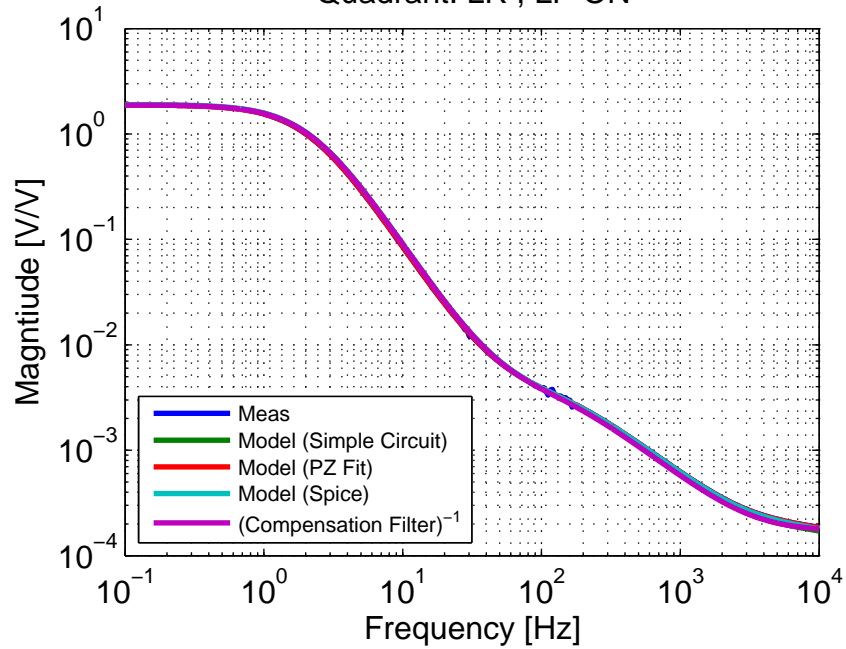


Fit Poles: (2.16 2.16 157 24000) Hz
 Comp Poles: (2.2 2.2 152) Hz

Fit Zeros: (48.8 48.8 3050) Hz
 Comp Zeros: (50 50 3250) Hz

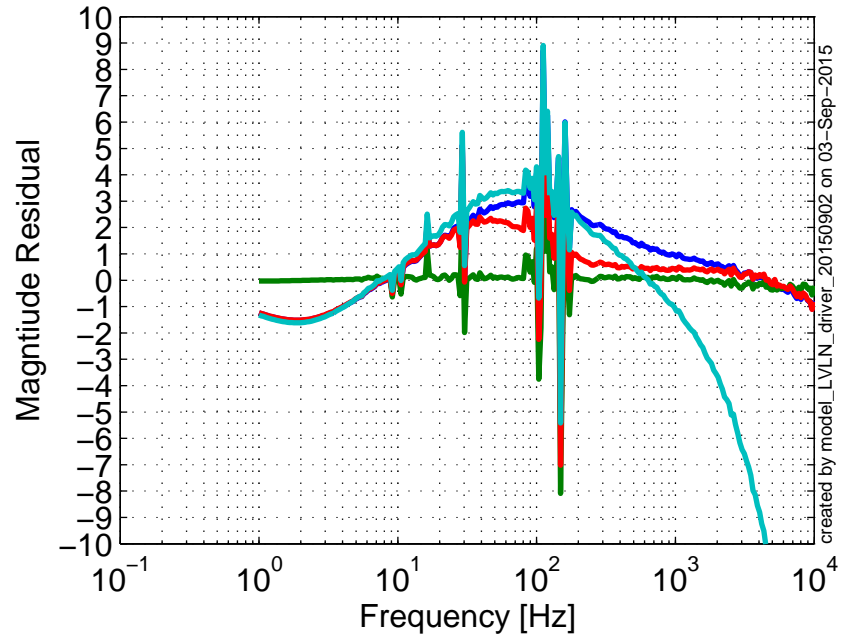
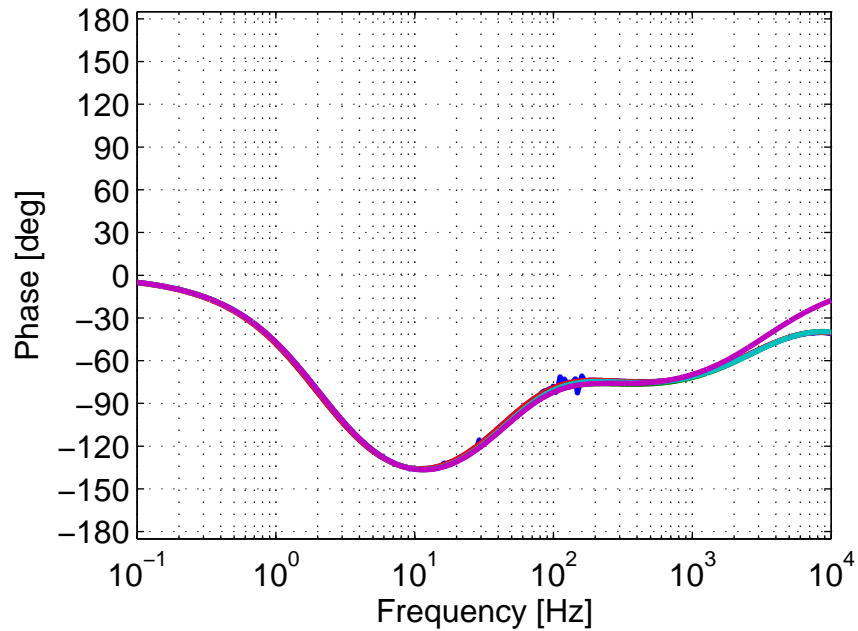


2015-05-22 H1SUSETMY ESD LVLN Driver
 Quadrant: LR , LP ON

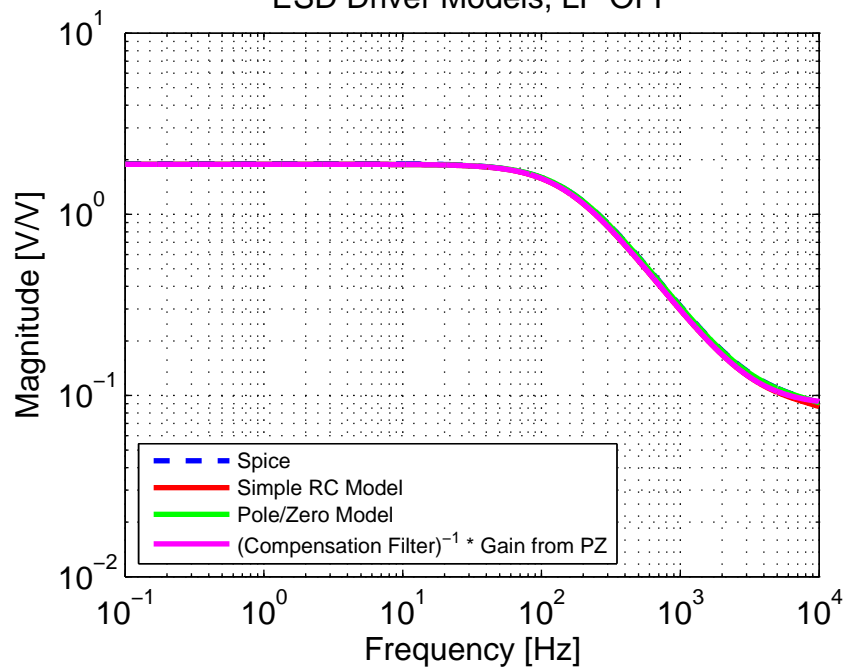


Fit Poles: (2.13 2.13 160 23000) Hz
 Comp Poles: (2.2 2.2 152) Hz

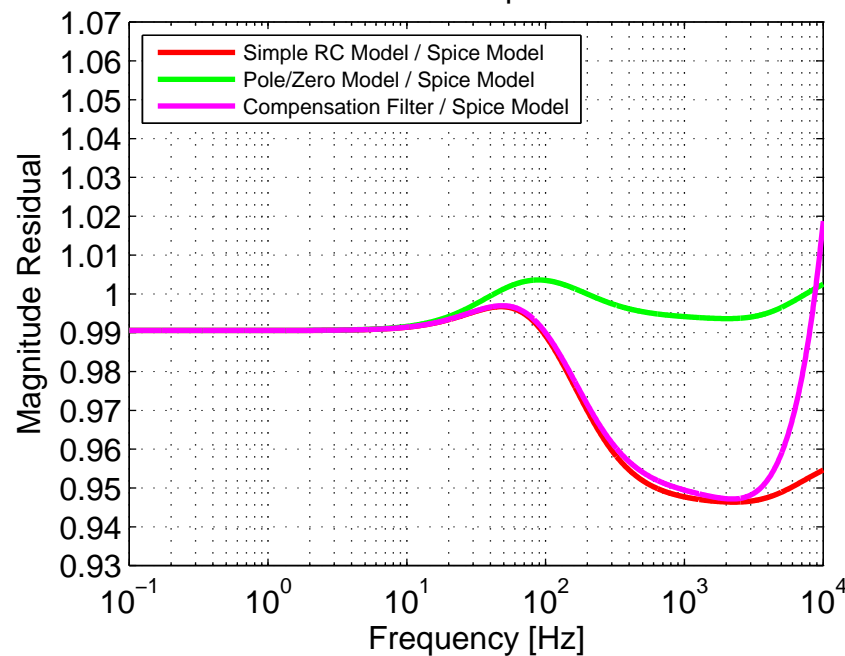
Fit Zeros: (47.8 47.8 3125) Hz
 Comp Zeros: (50 50 3250) Hz



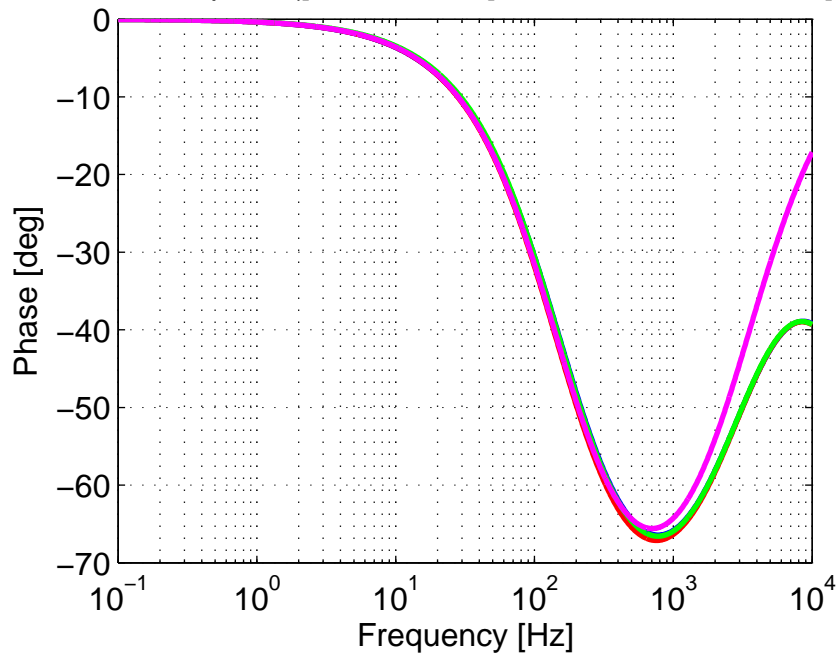
ESD Driver Models, LP OFF



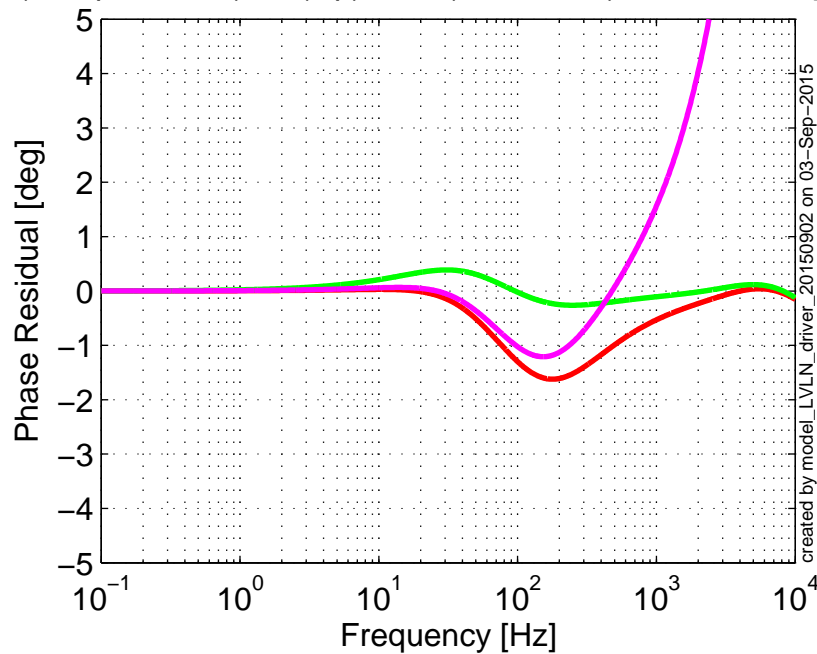
Model Comparison



PZ Model: z:p:k = ([159.2 24100] Hz : 3189 Hz : 1.8868 [V/V])



(Compensation)⁻¹ : (z:p) * k = (152 : 3250) Hz * 1.8868 [V/V]



created by model_LVLN_driver_20150902 on 03-Sep-2015