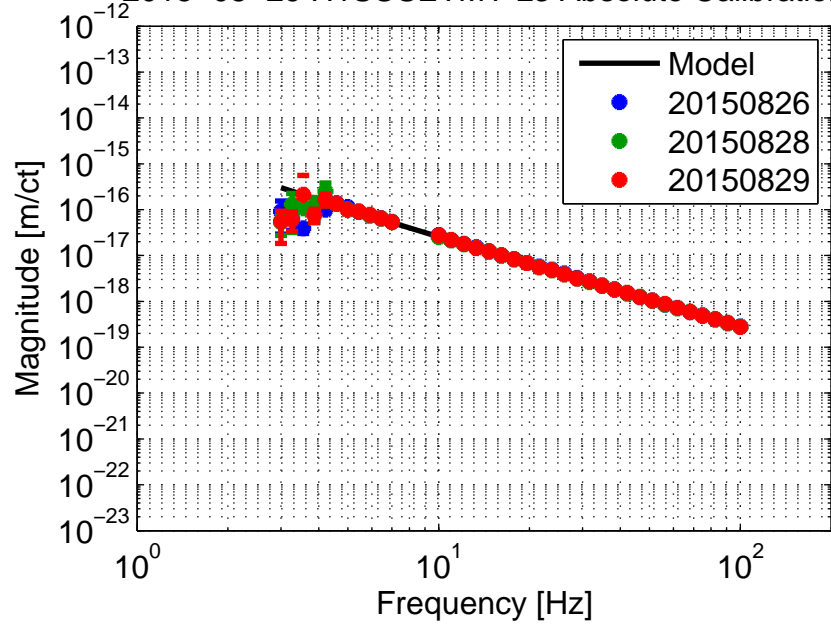
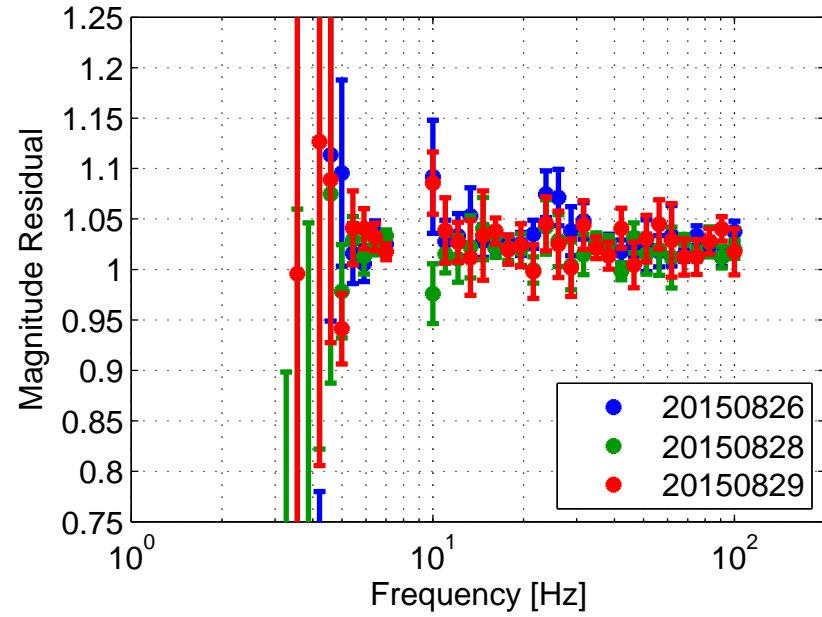


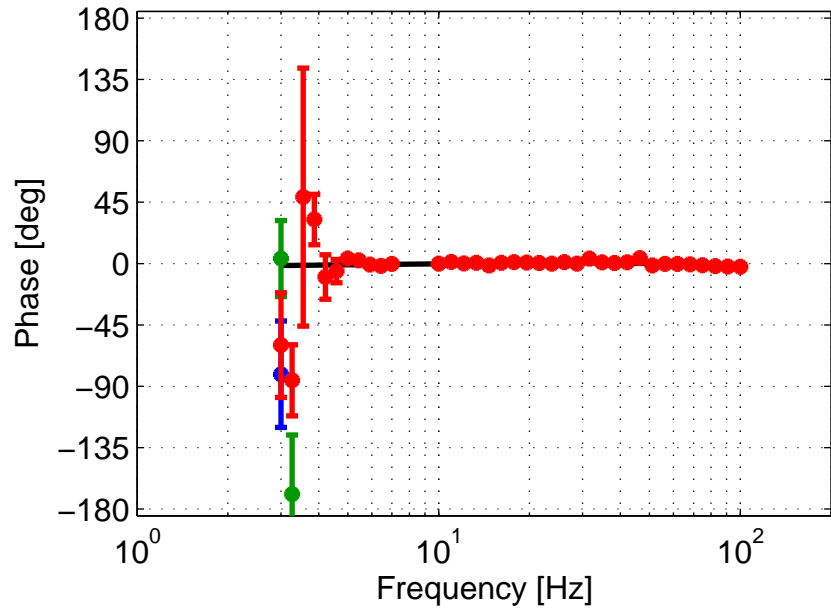
2015-08-29 H1SUSEMY L3 Absolute Calibration



Meas / Model



$1.55e-10 \pm 3.7e-13 \text{ [N/V}_{\text{ESD}}^2]$
 Rel. Unc. on Mean: 0.24 %, Mean Std: 10 %



$4.24e-12 \pm 1e-14 \text{ [N/ct]}$
 $1.11e-14 \pm 2.7e-17 \text{ [m/ct]}$

