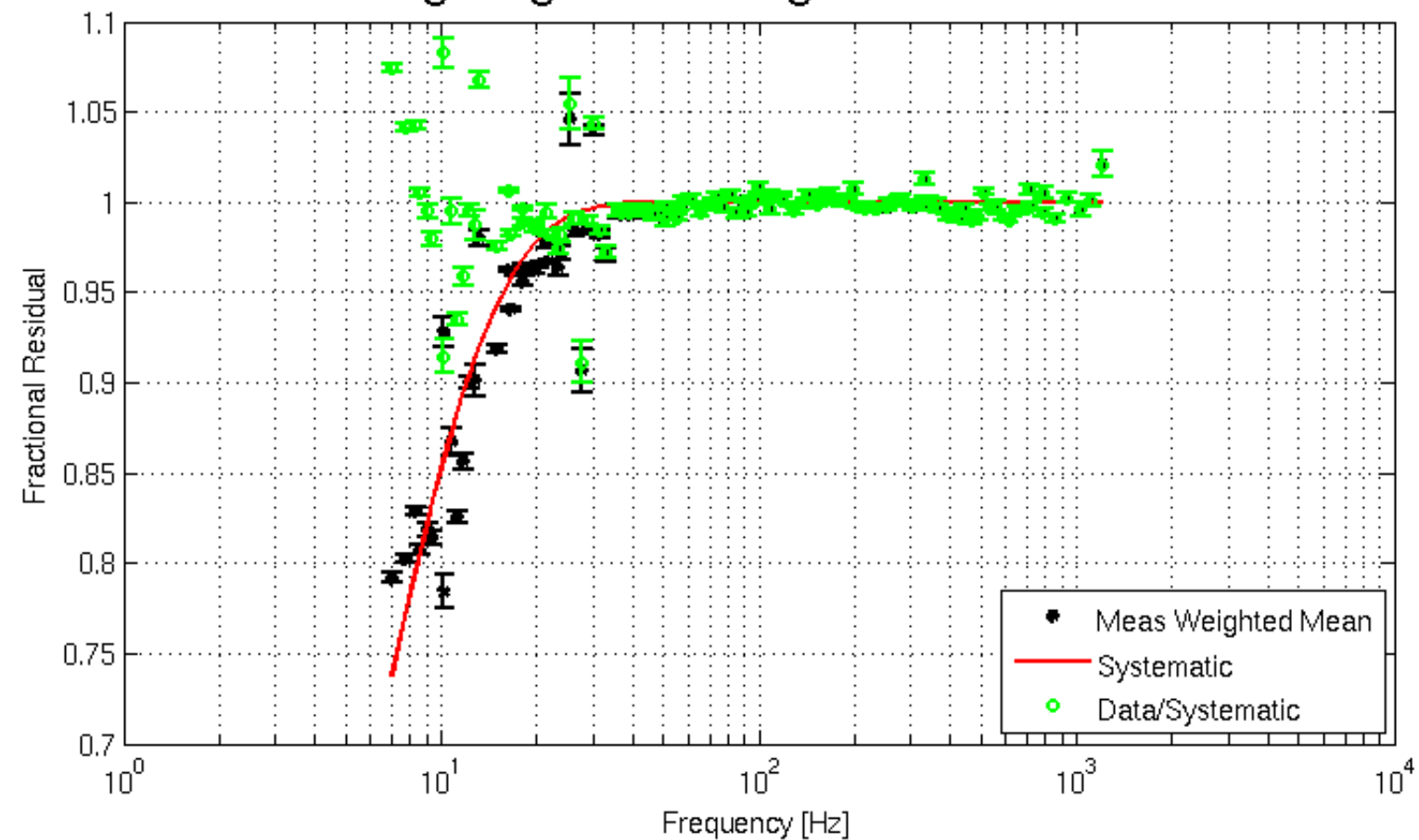
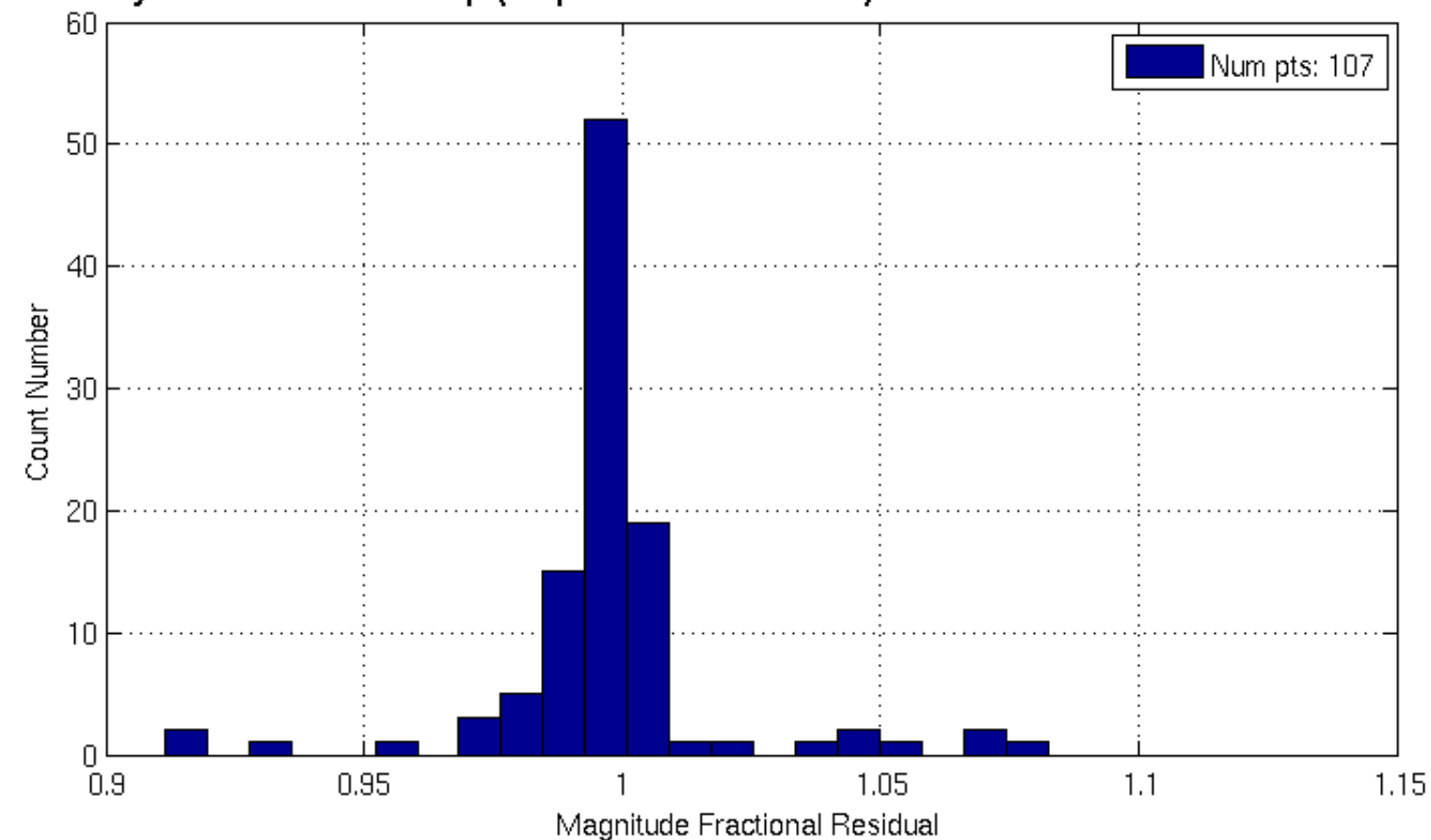


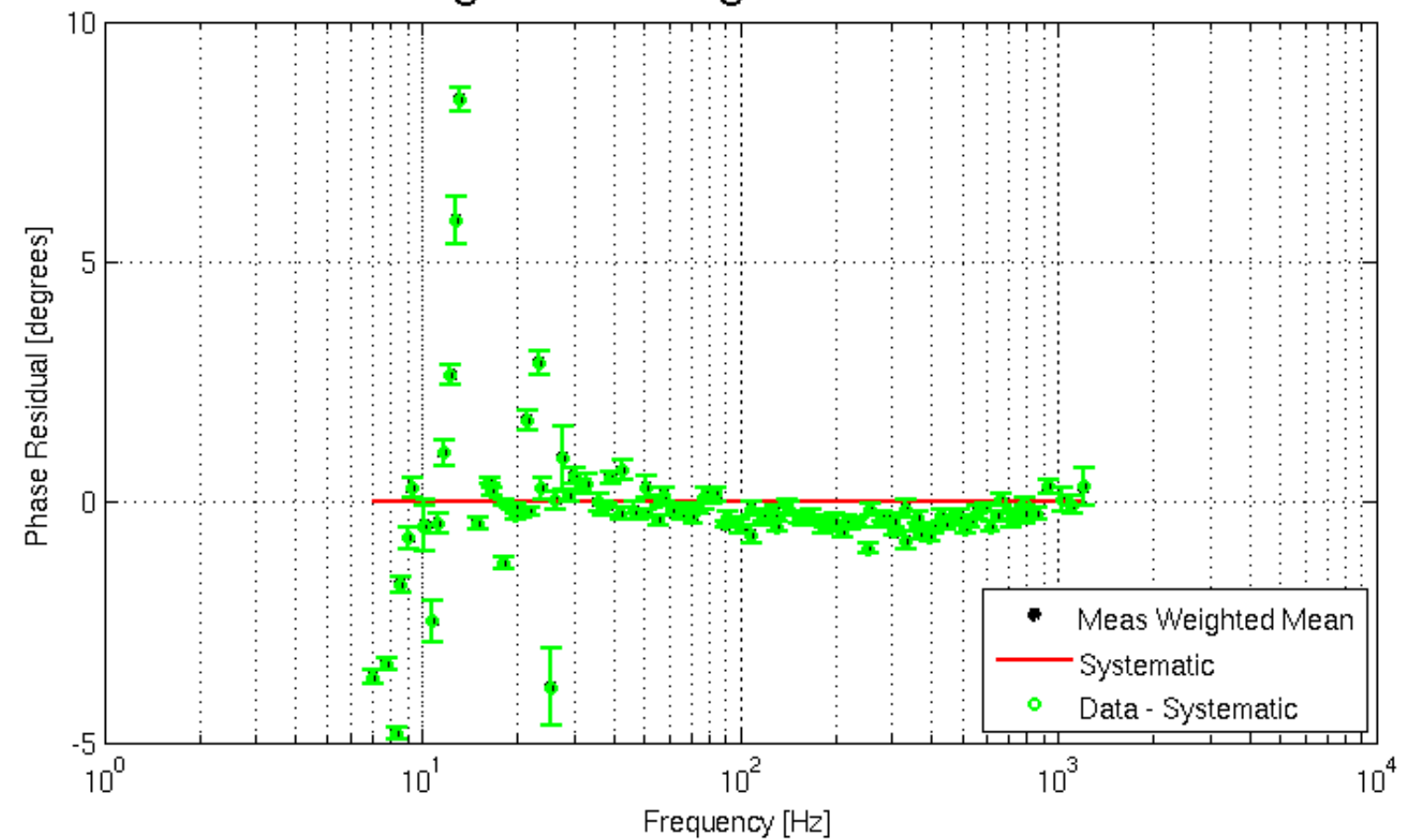
Sensing Magnitude Weighted Mean Residual



Mag Res -- Systematic:  $1 - \exp(-2\pi f \text{timeconst})$  -- Time Const: 0.0304 -- Std: 0.0223



Sensing Phase Weighted Mean Residual



Phase Res -- Systematic:  $180/\pi \cdot \text{Angle}(\exp(i \cdot 2\pi f \cdot \text{delay}))$  -- Advance: 0 -- Std: 1.4 degrees

