

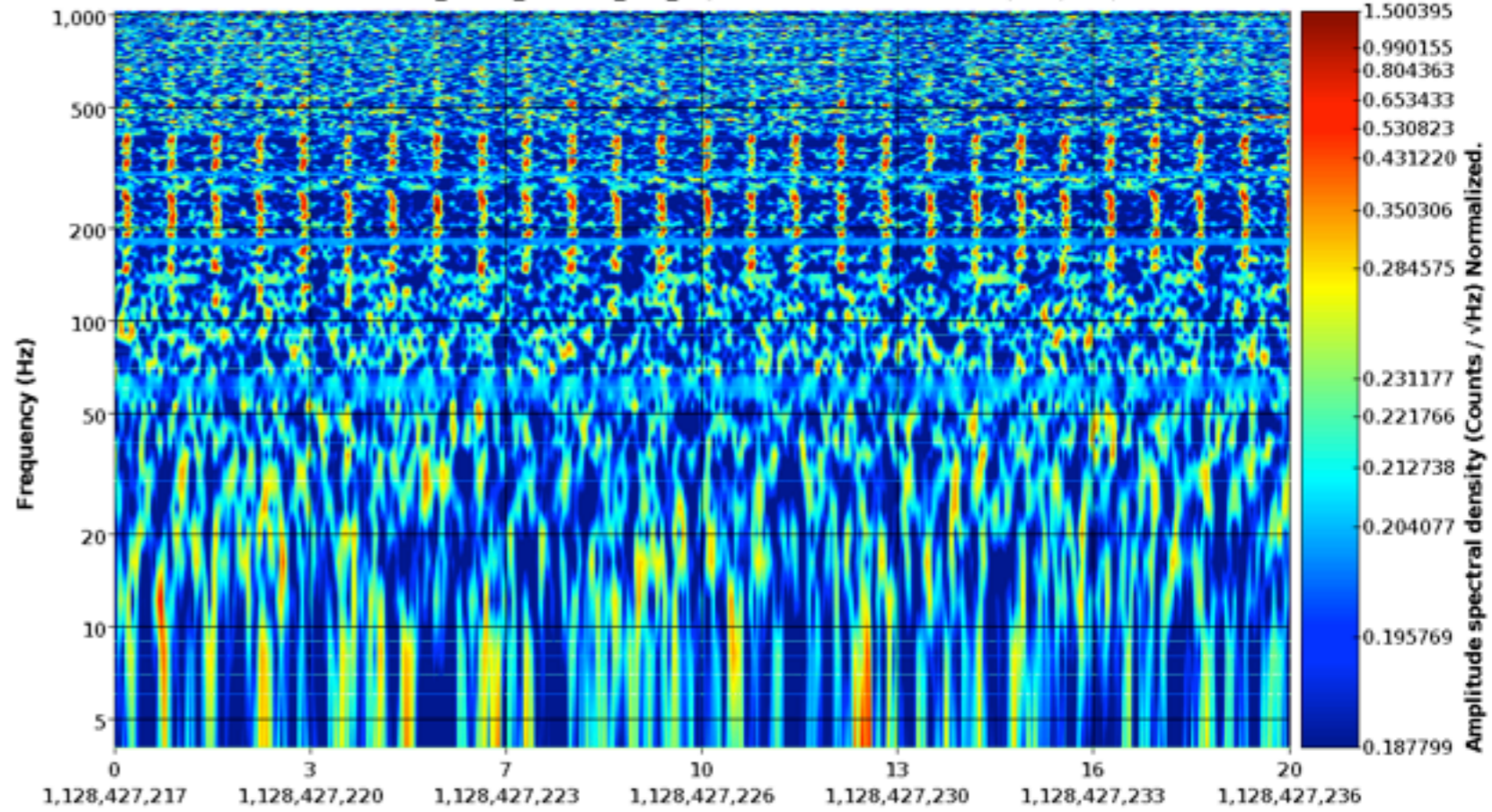
HAM4/5 ISI GS13

glitches

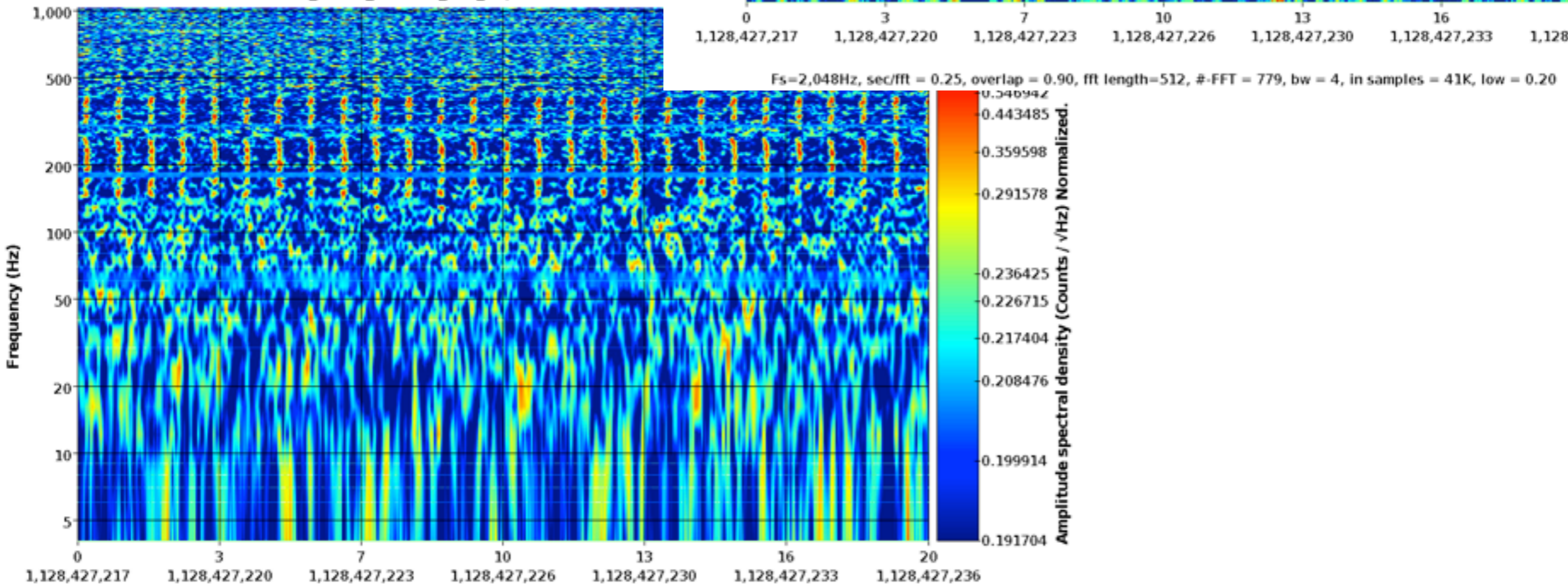
Josh Smith

# Oct 9, both are really bad

H1:ISI-HAM4\_BLND\_GS13RZ\_IN1\_DQ 2015-10-09 12:00:00 - 1,128,427,217 (20s)



H1:ISI-HAM5\_BLND\_GS13RZ\_IN1\_DQ 2015-10-09 12:00:00 - 1,128,427,217 (20s)

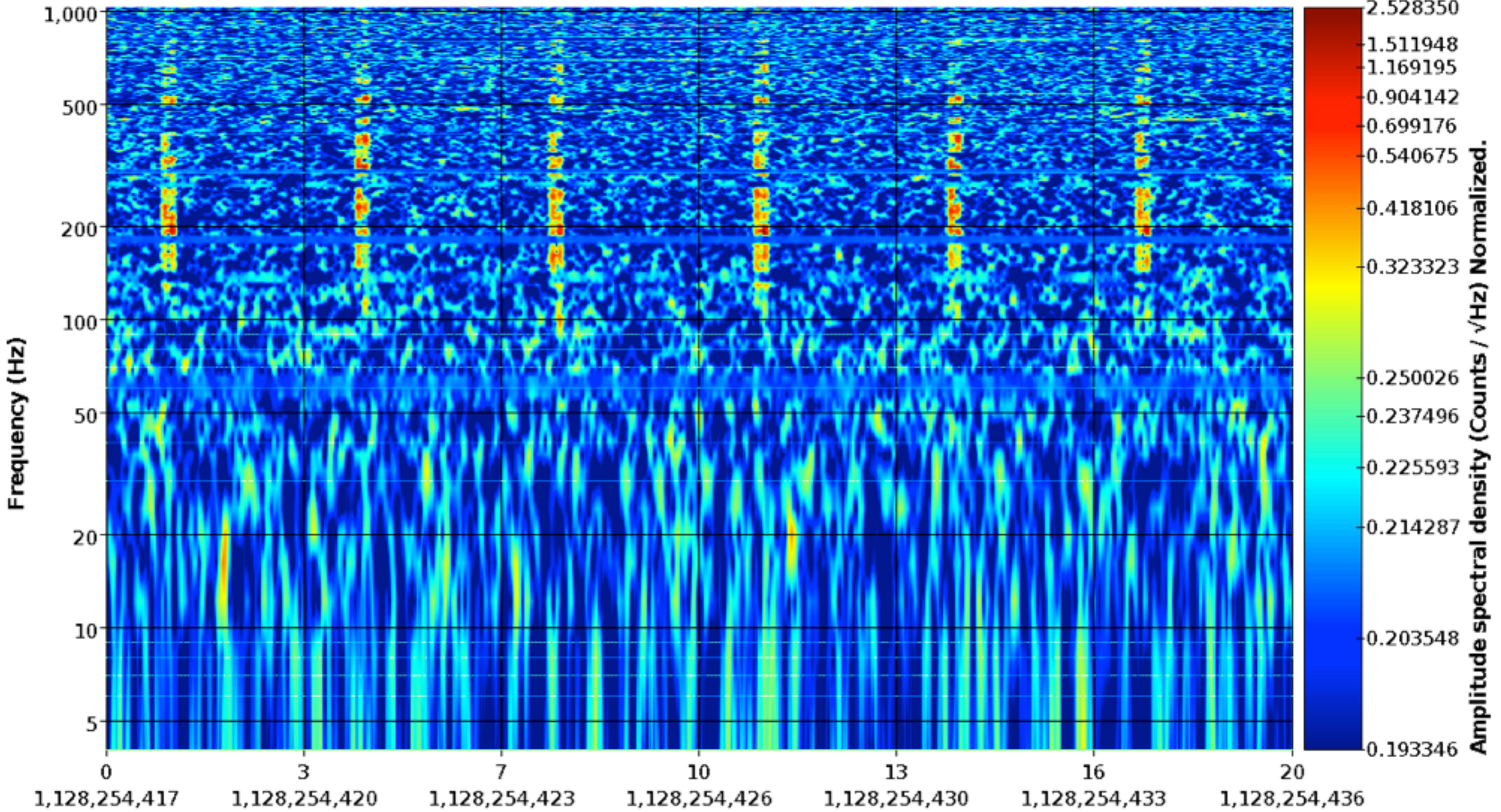


Fs=2,048Hz, sec/fft = 0.25, overlap = 0.90, fft length=512, #-FFT = 779, bw = 4, in samples = 41K, low = 0.20



# 10/7

H1:ISI-HAM4\_BLND\_GS13RZ\_IN1\_DQ 2015-10-07 12:00:00 - 1,128,254,417 (20s)

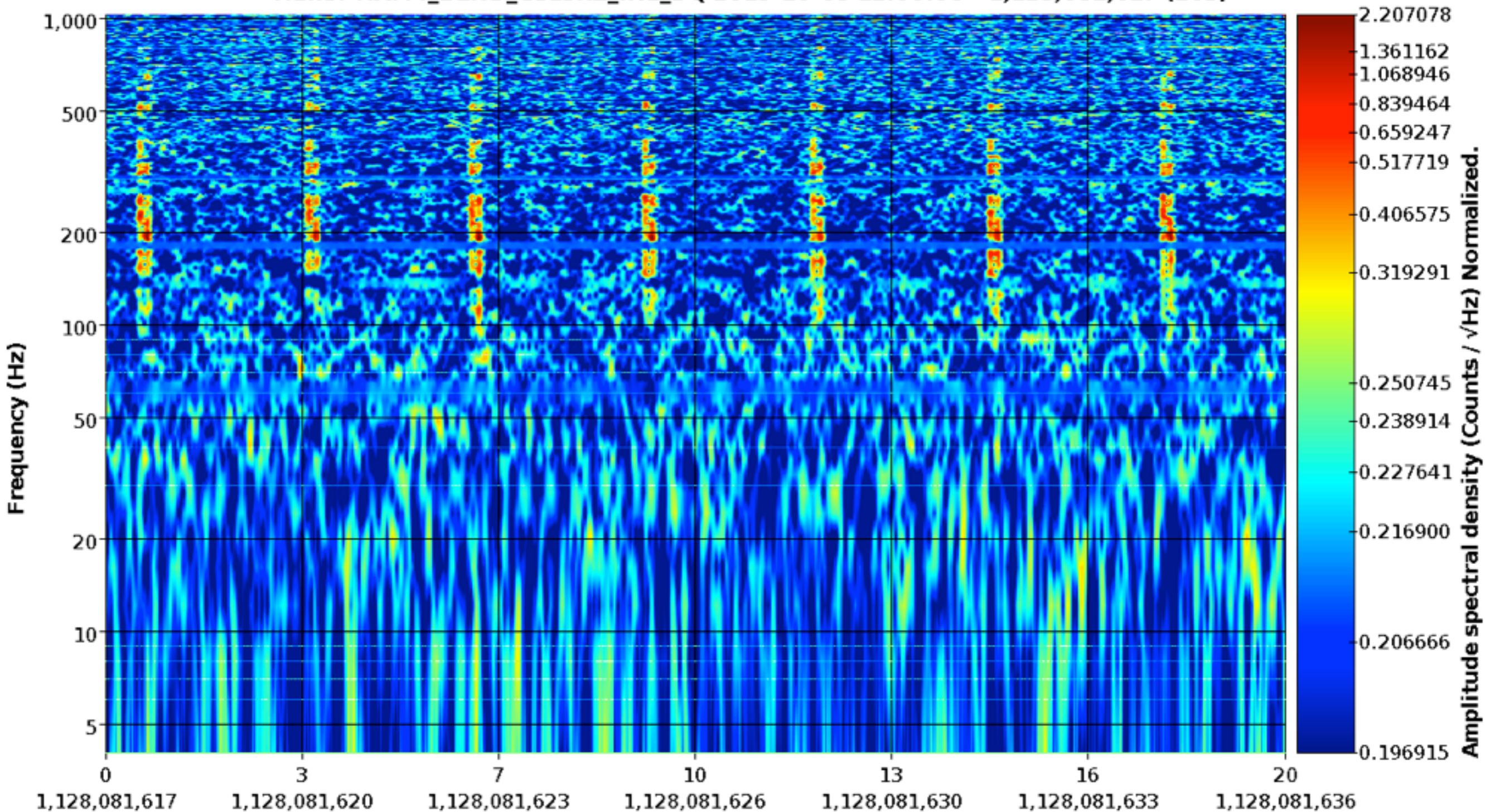


Fs=2,048Hz, sec/fft = 0.25, overlap = 0.90, fft length=512, #-FFT = 779, bw = 4, in samples = 41K, low = 0.20



# 10/5

H1:ISI-HAM4\_BLND\_GS13RZ\_IN1\_DQ 2015-10-05 12:00:00 - 1,128,081,617 (20s)

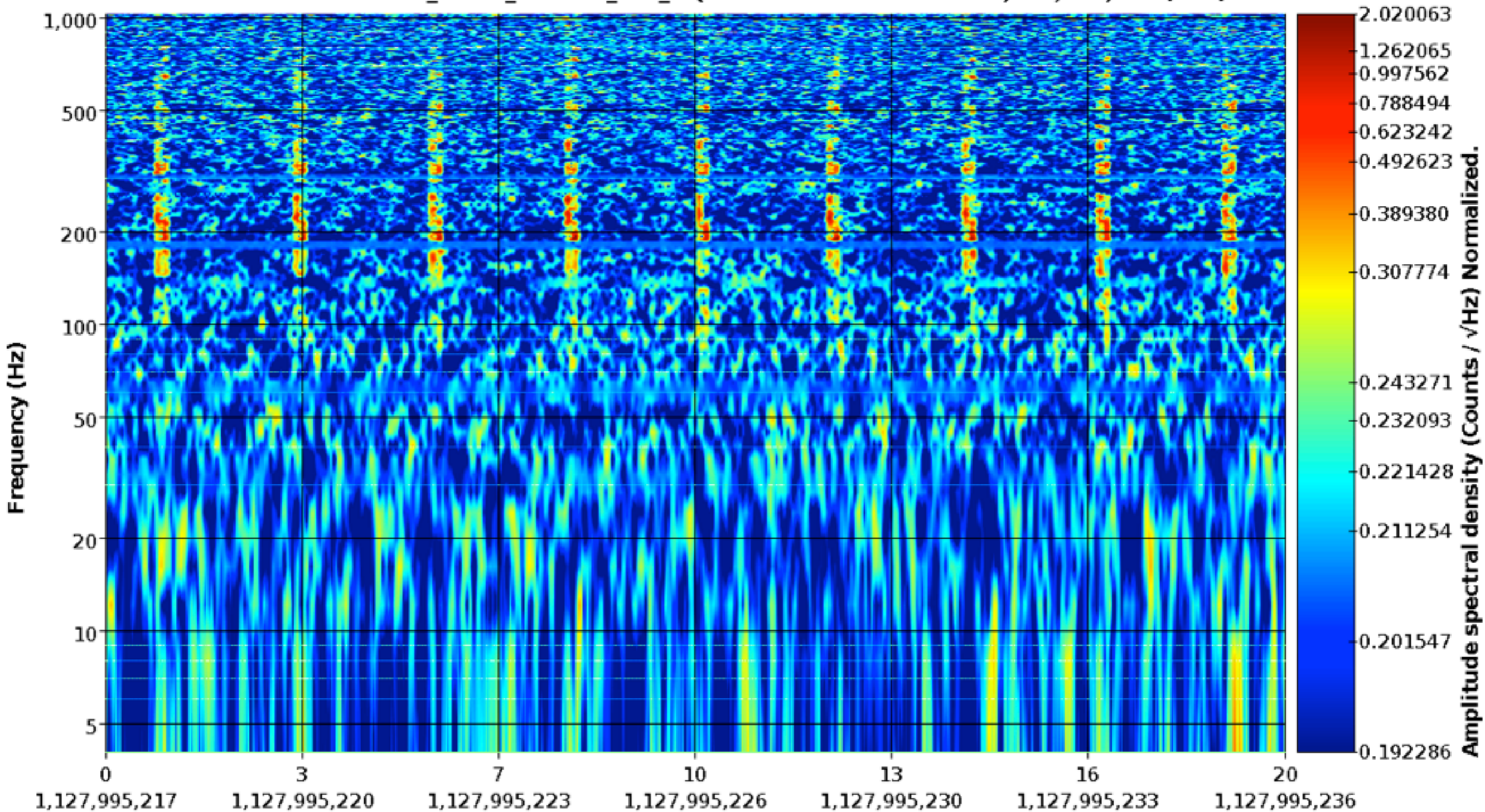


Fs=2,048Hz, sec/fft = 0.25, overlap = 0.90, fft length=512, #-FFT = 779, bw = 4, in samples = 41K, low = 0.20



# 10/4

H1:ISI-HAM5\_BLND\_GS13RZ\_IN1\_DQ 2015-10-04 12:00:00 - 1,127,995,217 (20s)

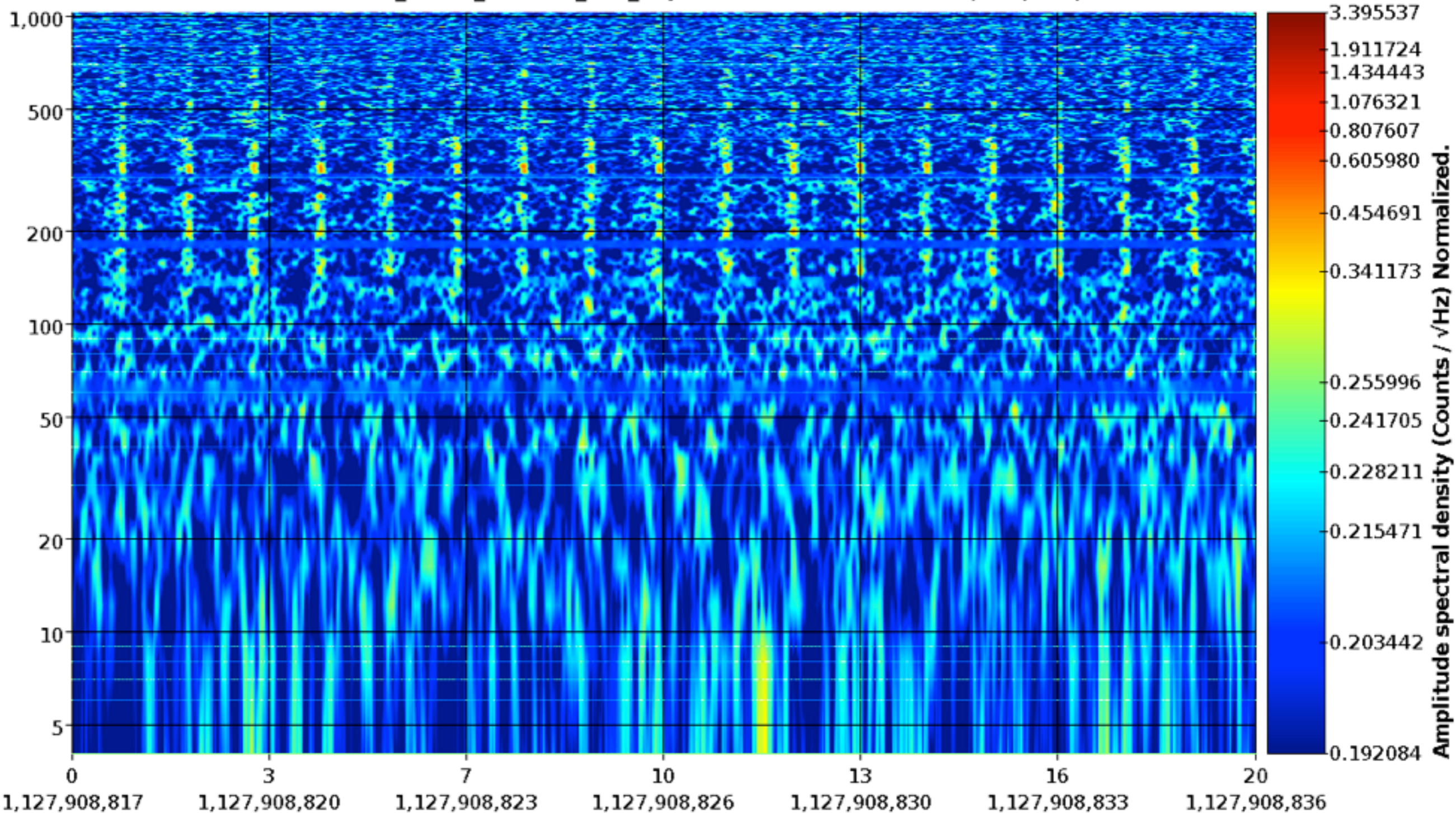


Fs=2,048Hz, sec/fft = 0.25, overlap = 0.90, fft length=512, #-FFT = 779, bw = 4, in samples = 41K, low = 0.20



# 10/3

H1:ISI-HAM4\_BLND\_GS13RZ\_IN1\_DQ 2015-10-03 12:00:00 - 1,127,908,817 (20s)

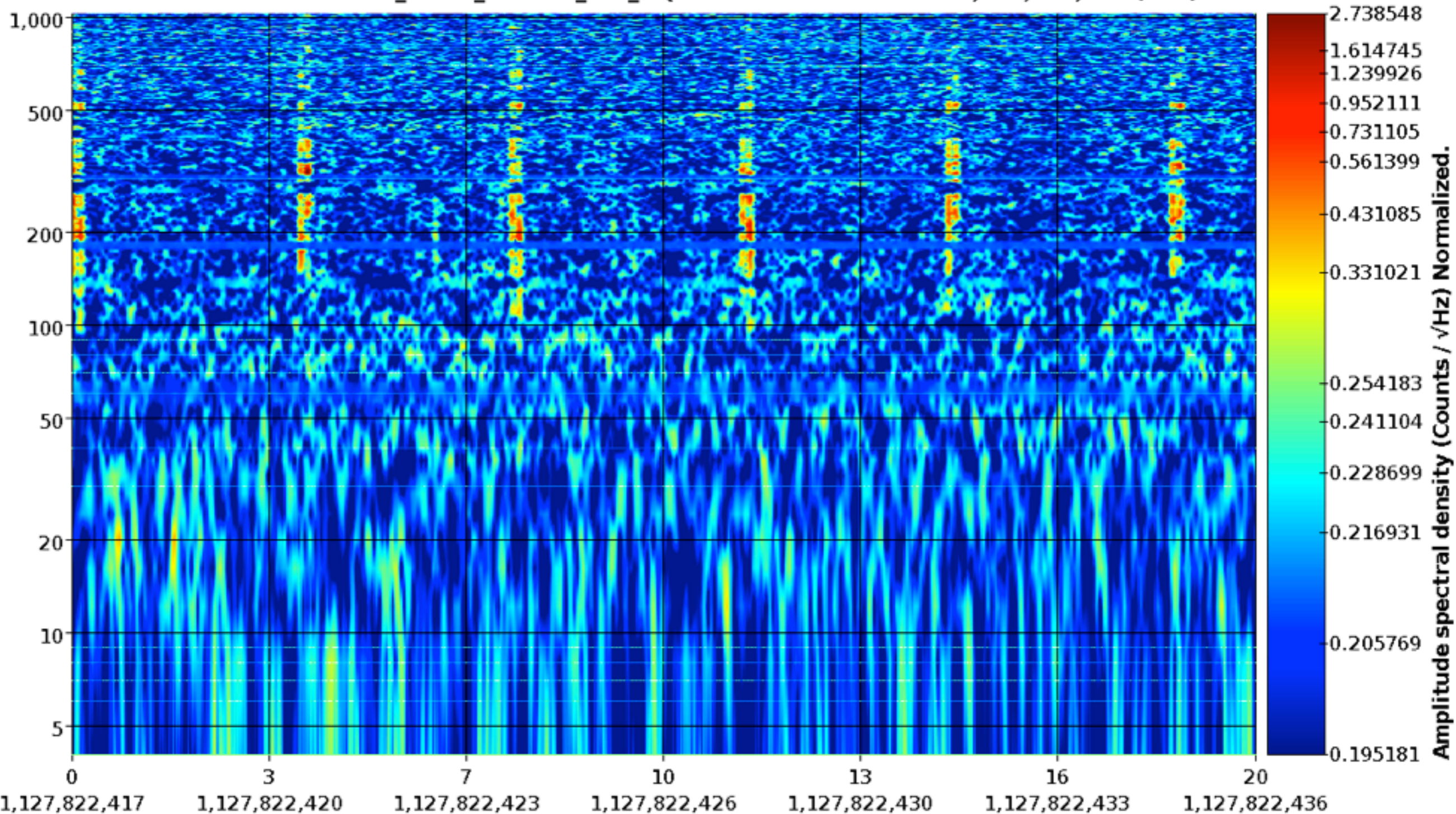


Fs=2,048Hz, sec/fft = 0.25, overlap = 0.90, fft length=512, #-FFT = 779, bw = 4, in samples = 41K, low = 0.20



# 10/2

H1:ISI-HAM4\_BLND\_GS13RZ\_IN1\_DQ 2015-10-02 12:00:00 - 1,127,822,417 (20s)

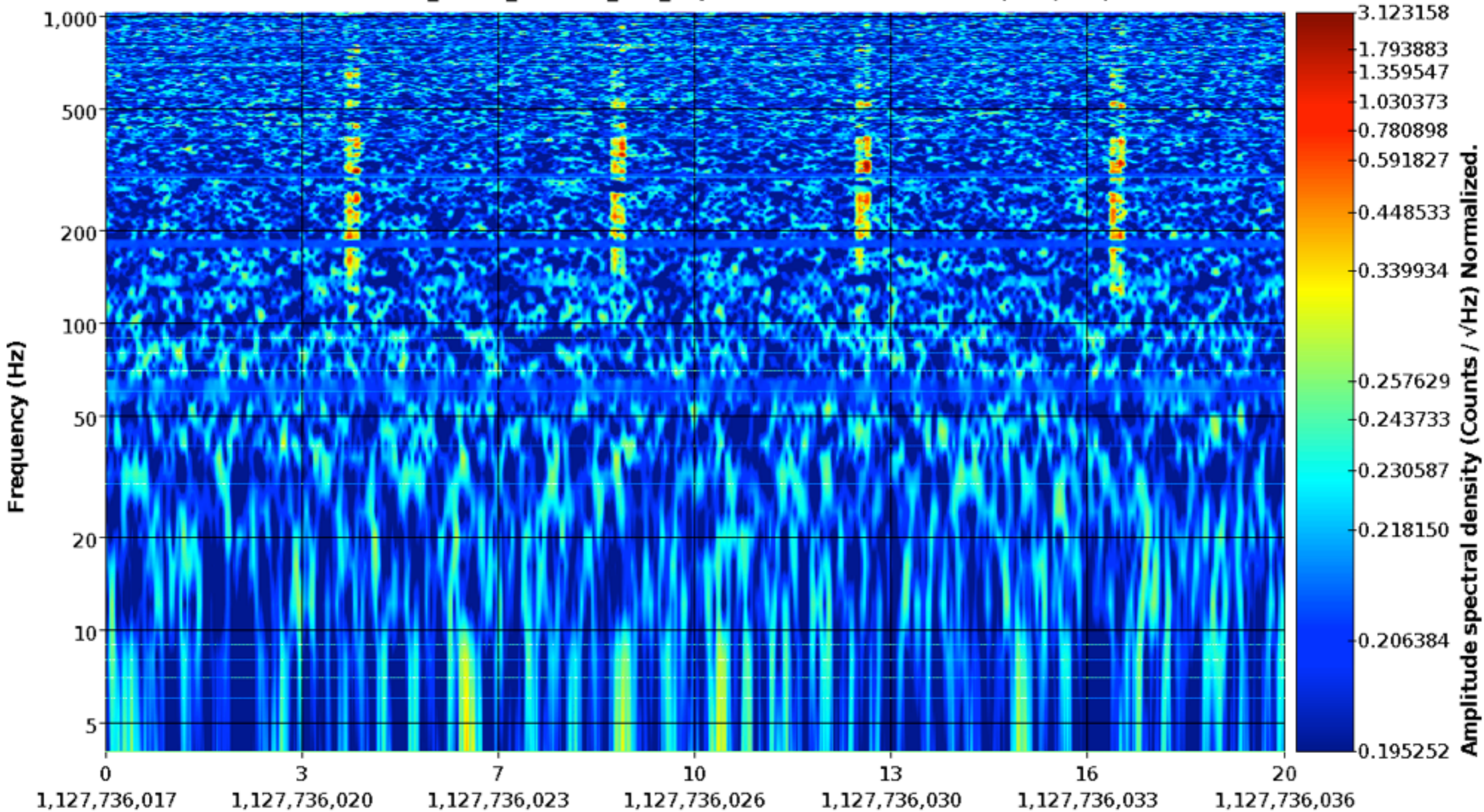


Fs=2,048Hz, sec/fft = 0.25, overlap = 0.90, fft length=512, #-FFT = 779, bw = 4, in samples = 41K, low = 0.20



# 10/1

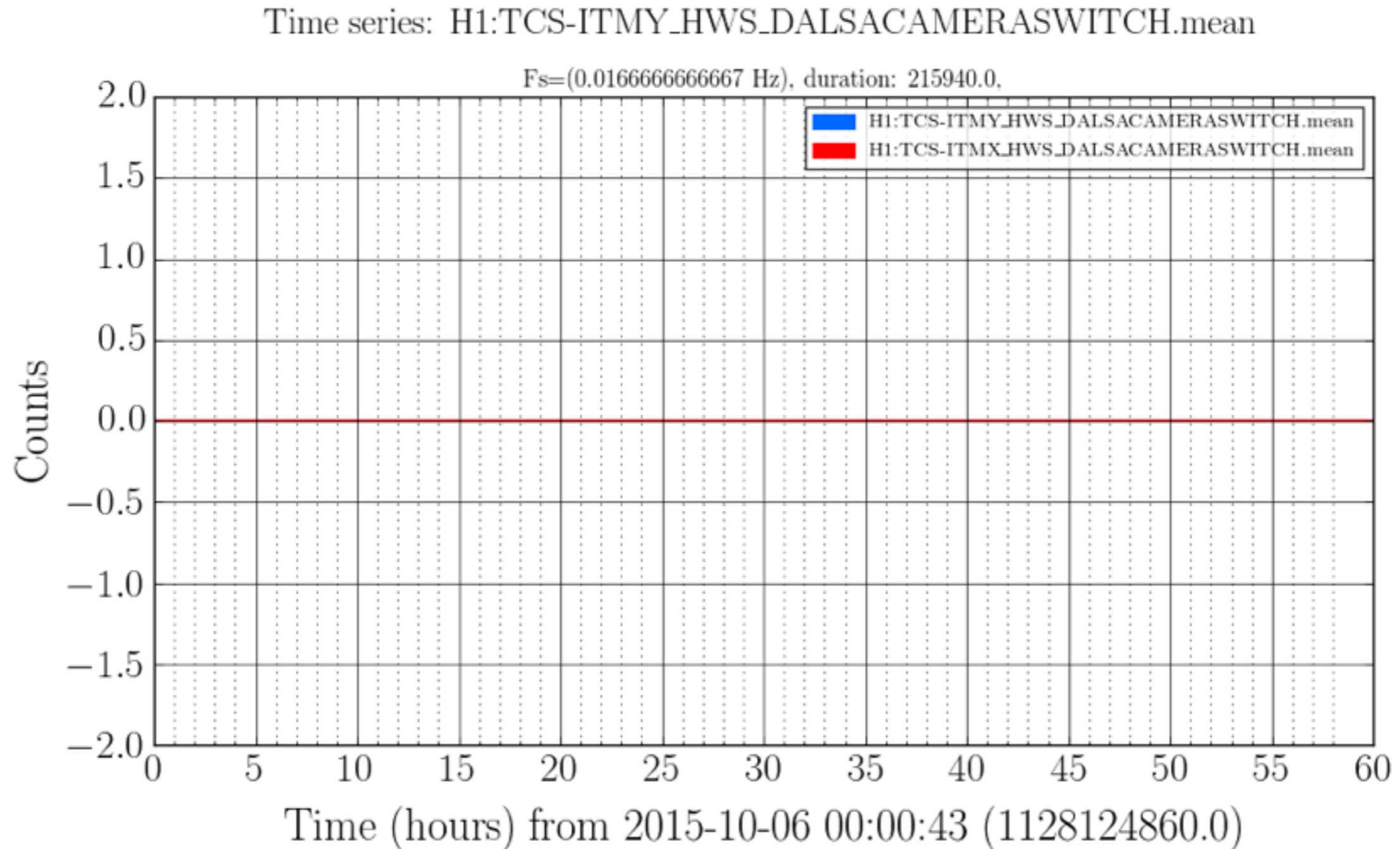
H1:ISI-HAM4\_BLND\_GS13RZ\_IN1\_DQ 2015-10-01 12:00:00 - 1,127,736,017 (20s)



Fs=2,048Hz, sec/fft = 0.25, overlap = 0.90, fft length=512, #-FFT = 779, bw = 4, in samples = 41K, low = 0.20



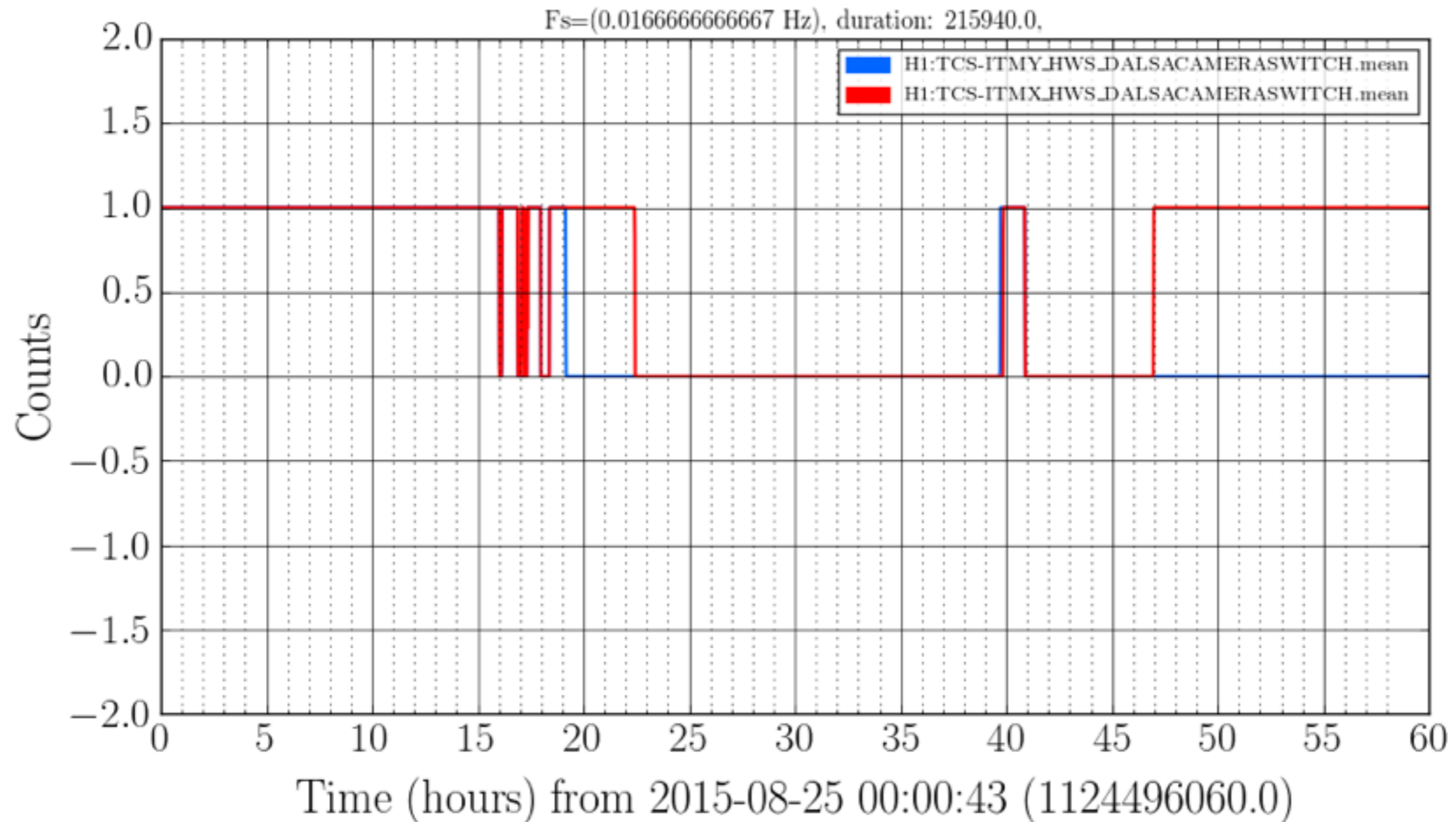
Are LVEA HWS cameras switched on now? I think 0 is off, so I think it's off!





# Were LVEA HWS cameras switched on in late August?

Time series: H1:TCS-ITMY\_HWS\_DALSACAMERASWITCH.mean



25

26

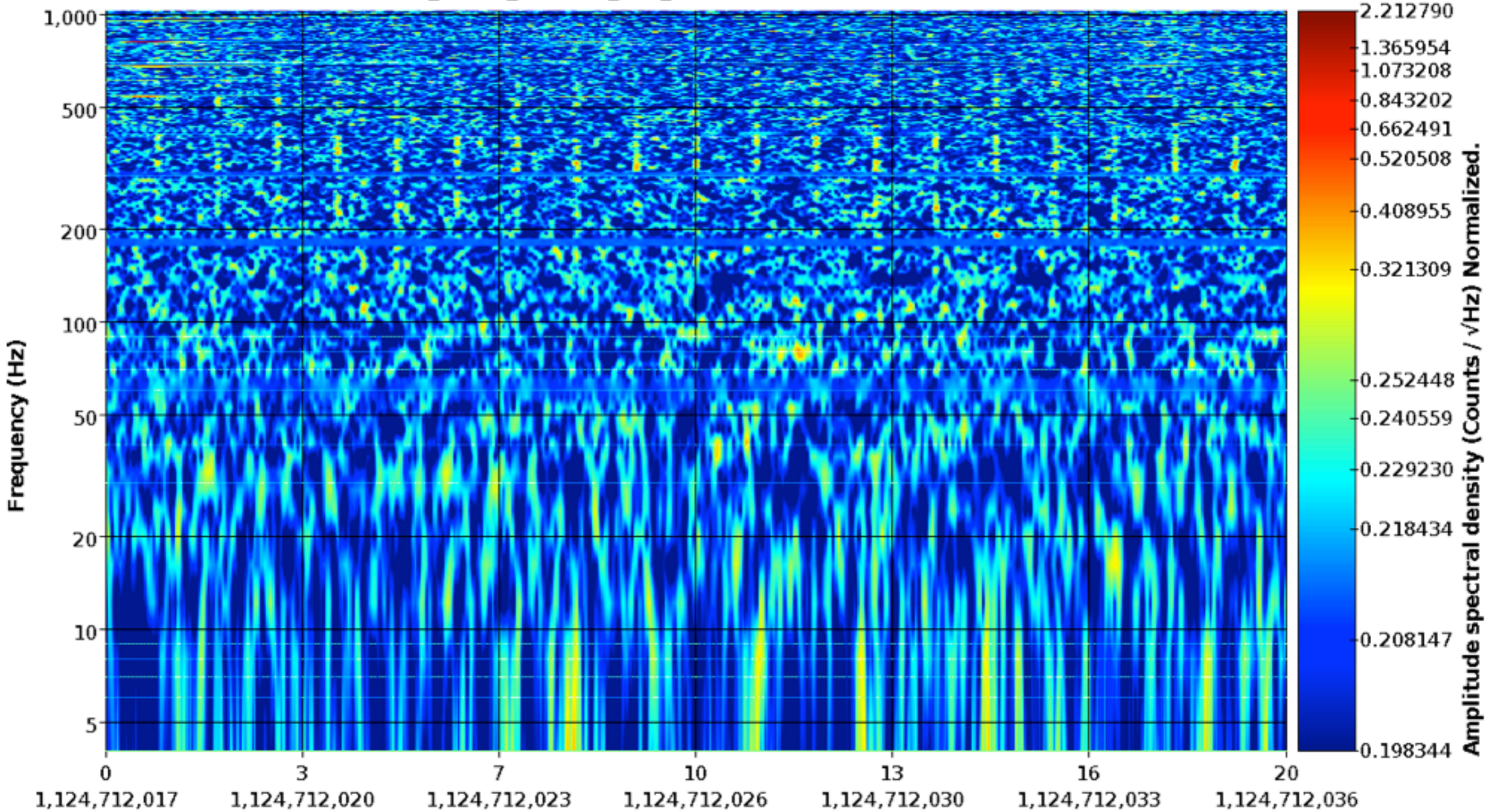
27

28



# 8/27

H1:ISI-HAM4\_BLND\_GS13RZ\_IN1\_DQ 2015-08-27 12:00:00 - 1,124,712,017 (20s)

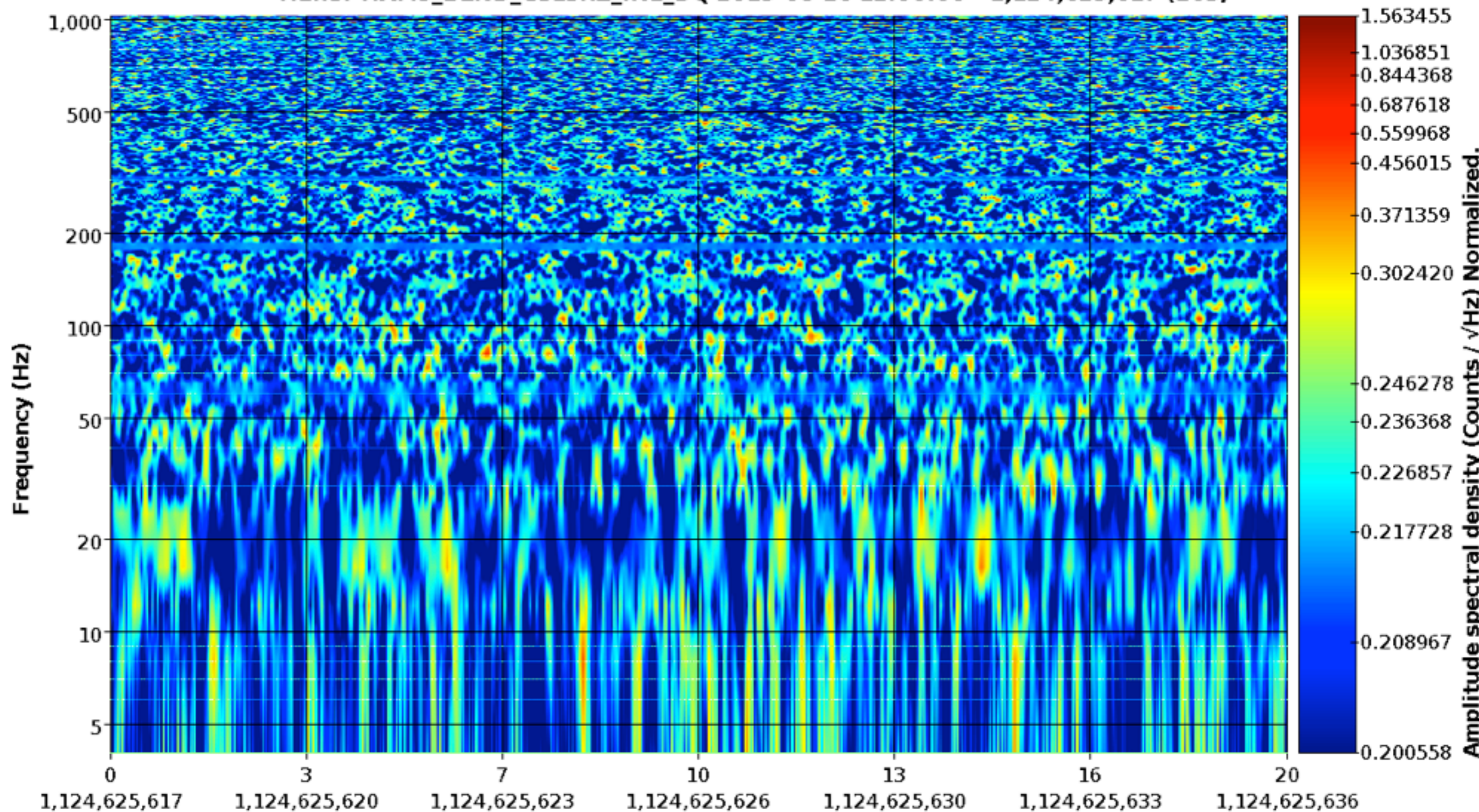


Fs=2,048Hz, sec/fft = 0.25, overlap = 0.90, fft length=512, #-FFT = 779, bw = 4, in samples = 41K, low = 0.20



# 8/26

H1:ISI-HAM5\_BLND\_GS13RZ\_IN1\_DQ 2015-08-26 12:00:00 - 1,124,625,617 (20s)

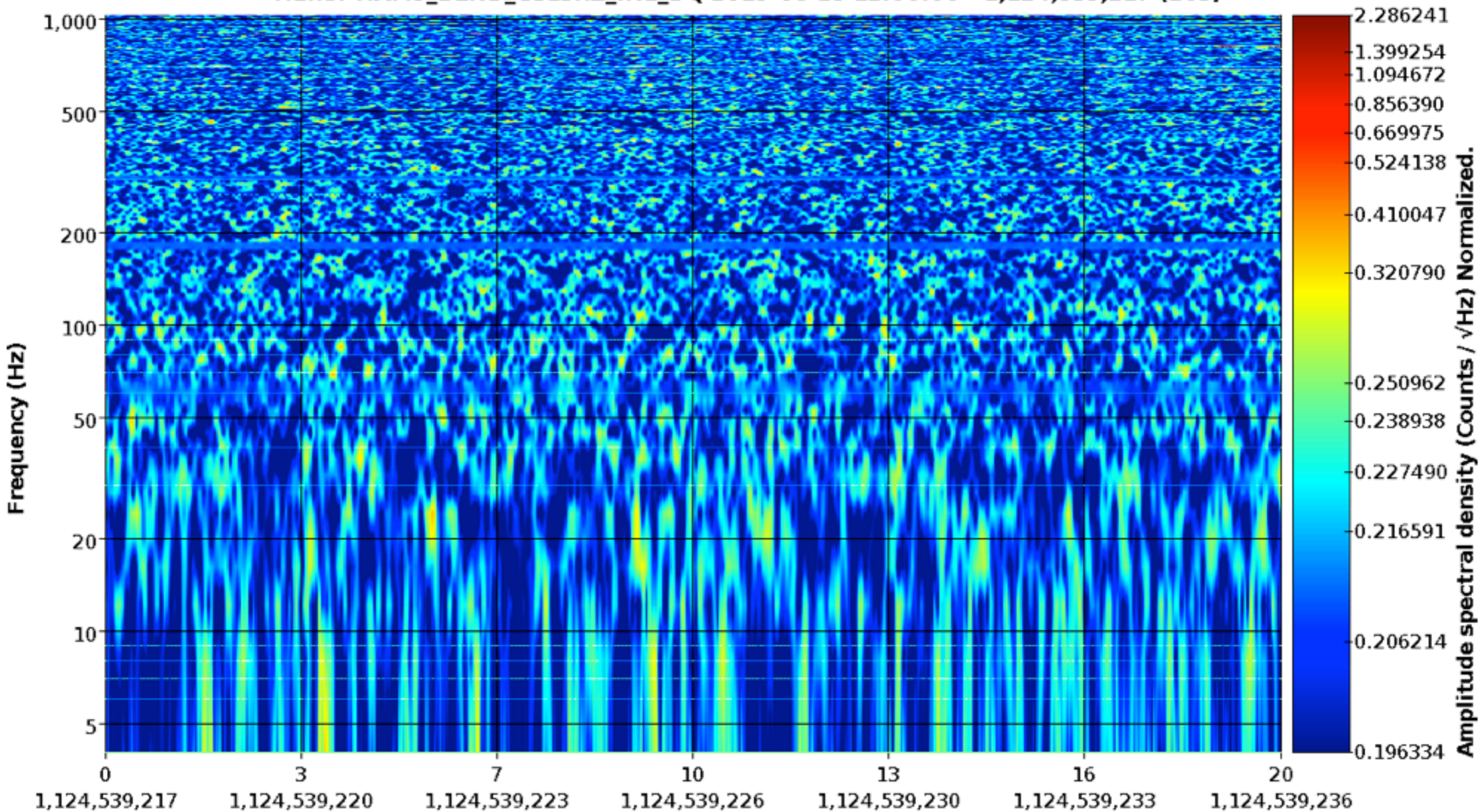


Fs=2,048Hz, sec/fft = 0.25, overlap = 0.90, fft length=512, #-FFT = 779, bw = 4, in samples = 41K, low = 0.20



# 8/25

H1:ISI-HAM5\_BLND\_GS13RZ\_IN1\_DQ 2015-08-25 12:00:00 - 1,124,539,217 (20s)



Fs=2,048Hz, sec/fft = 0.25, overlap = 0.90, fft length=512, #-FFT = 779, bw = 4, in samples = 41K, low = 0.20