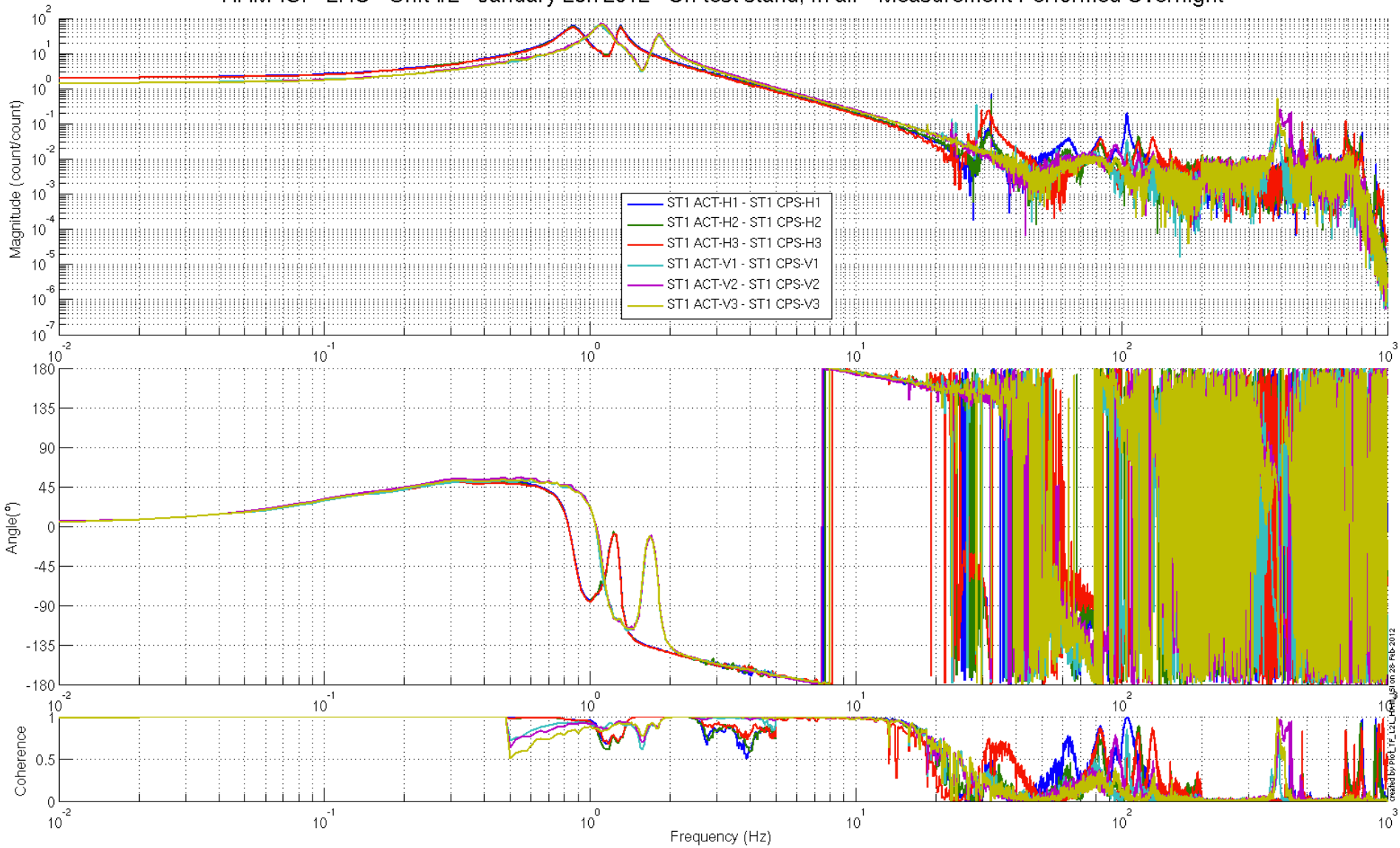
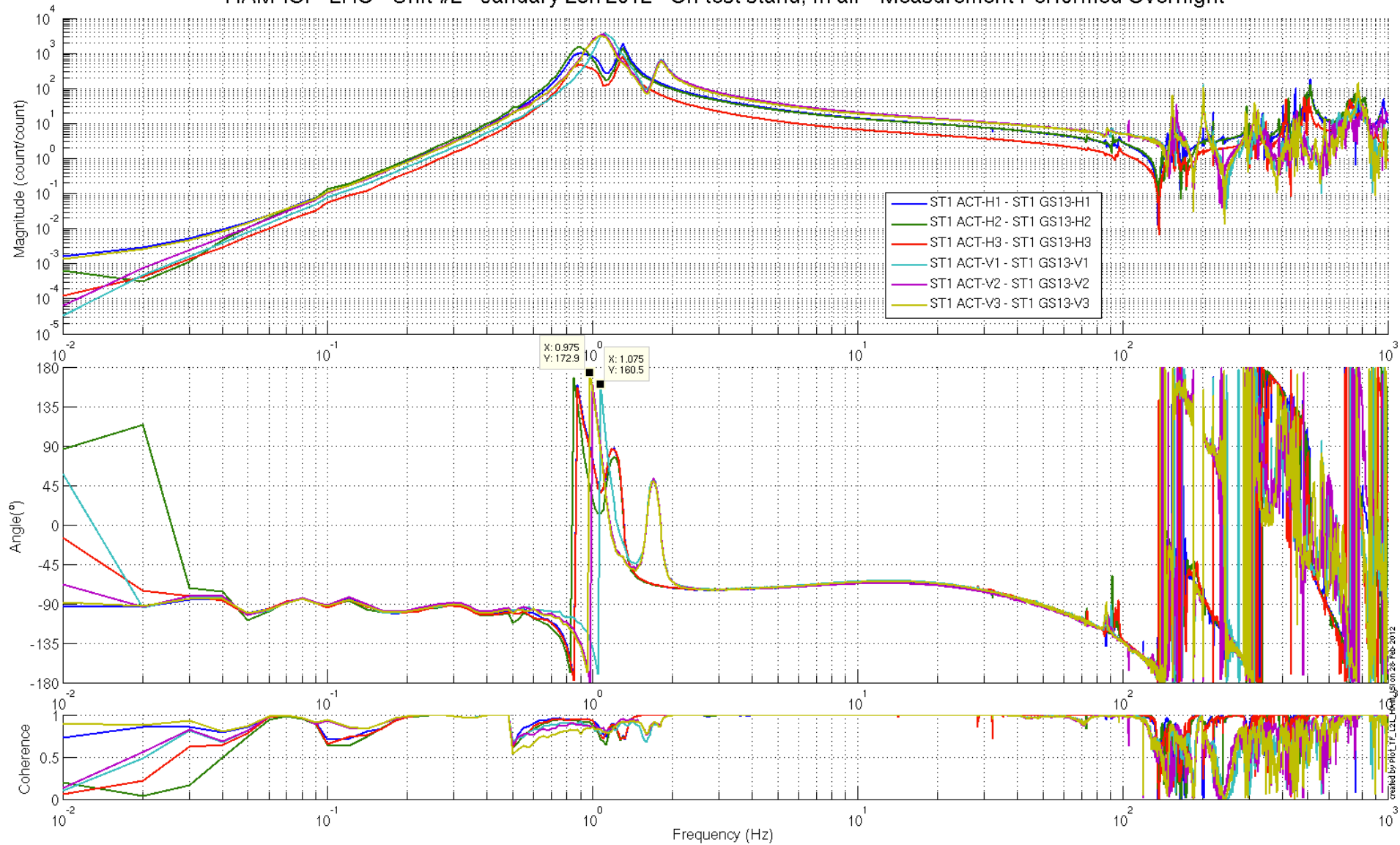


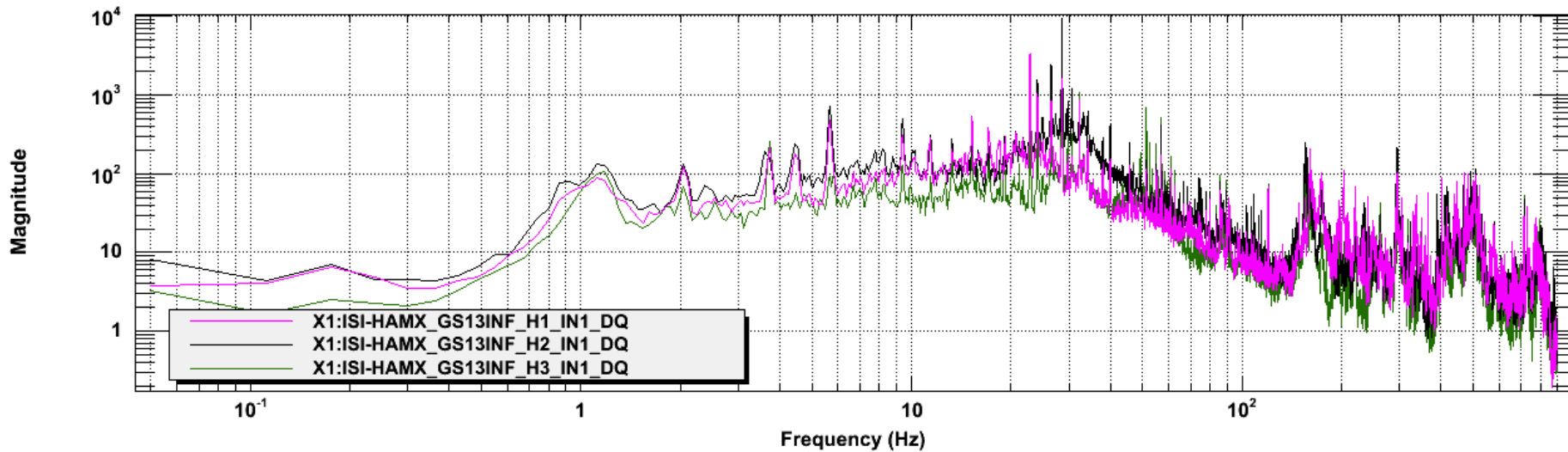
HAM-ISI - LHO - Unit #2 - January 28h 2012 - On test stand, In air - Measurement Performed Overnight



HAM-ISI - LHO - Unit #2 - January 28h 2012 - On test stand, In air - Measurement Performed Overnight



Power spectrum

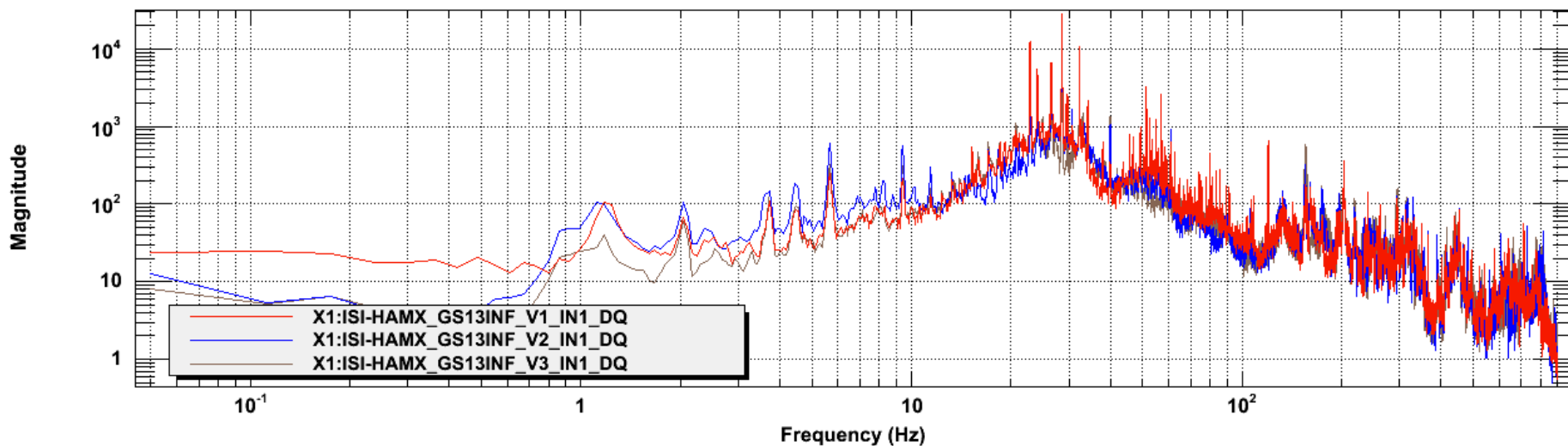


T0=27/02/2012 19:29:39

Avg=15

BW=0.0937493

Power spectrum



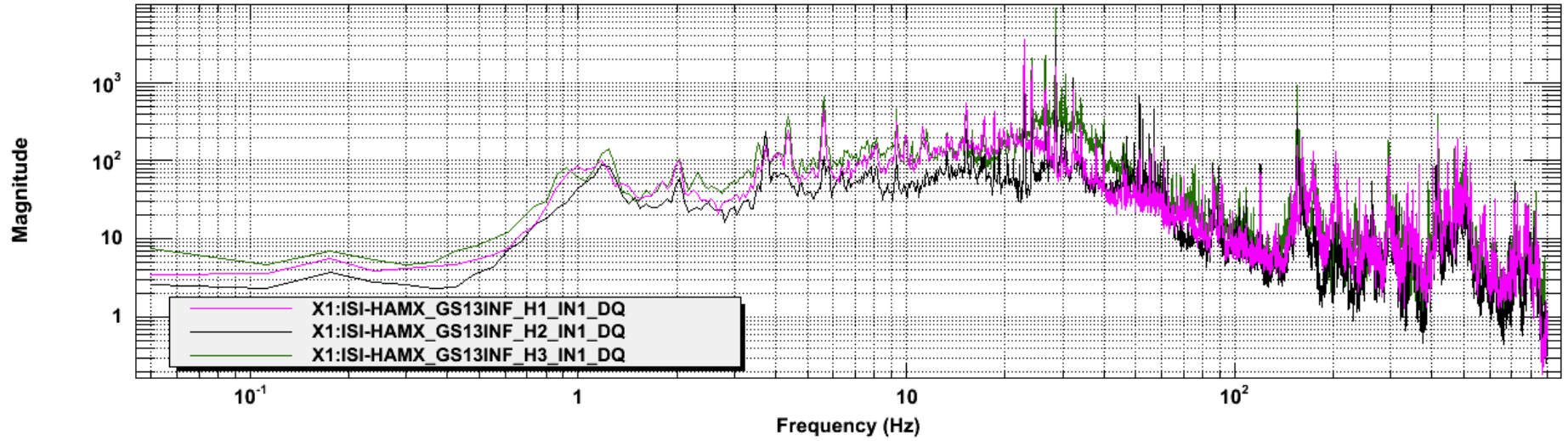
T0=27/02/2012 19:29:39

Avg=15

BW=0.0937493

GS13 #2 and GS13 #3 were inverted on the interface chassis

Power spectrum

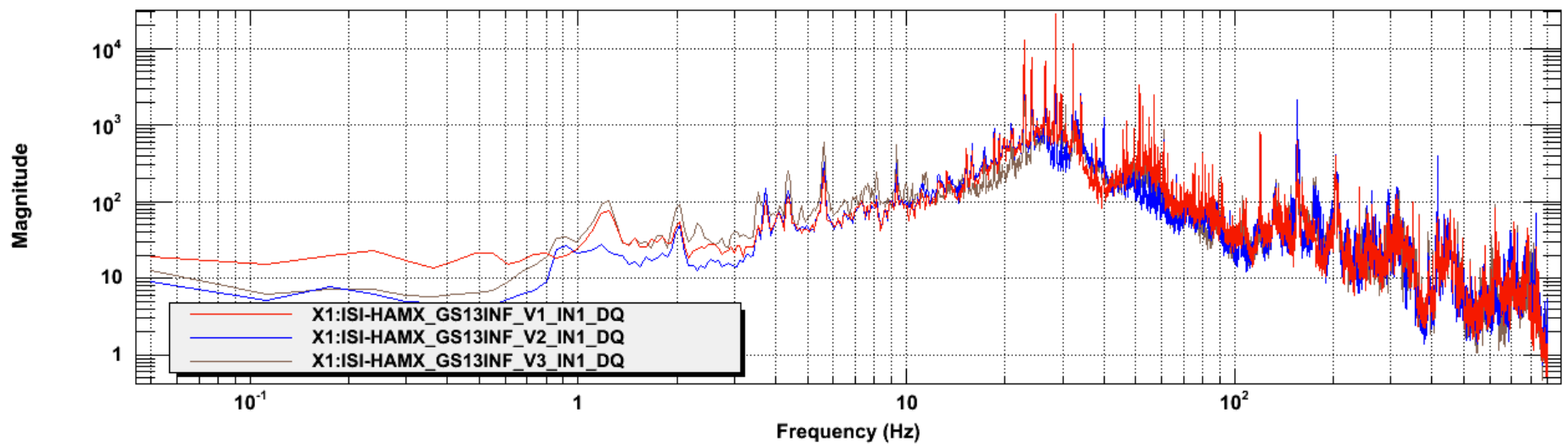


T0=27/02/2012 19:36:25

Avg=15

BW=0.0937493

Power spectrum



T0=27/02/2012 19:36:25

Avg=15

BW=0.0937493