

H1 Deinstall, April 19, 2012

Cheryl Vorvick

Jodi Fauver

Particulate on top of the optic – Not new, but consistent



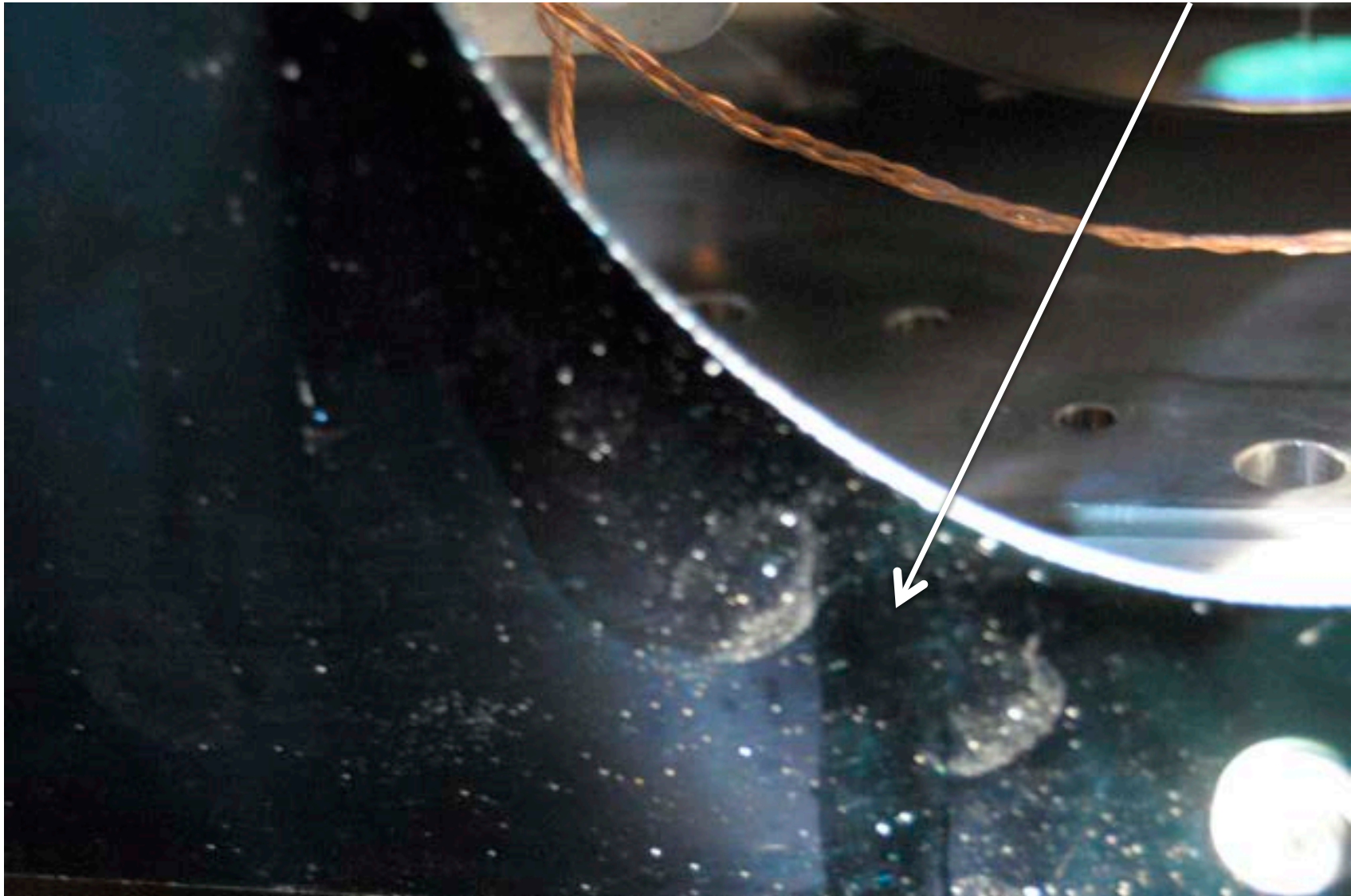
Piece of a glove



Black glass baffle, ITMY – before I touched it



Black glass baffle – same area, after I ran my gloved finger down the glass



Black glass baffle – finger print



Black glass baffle – hand/finger print



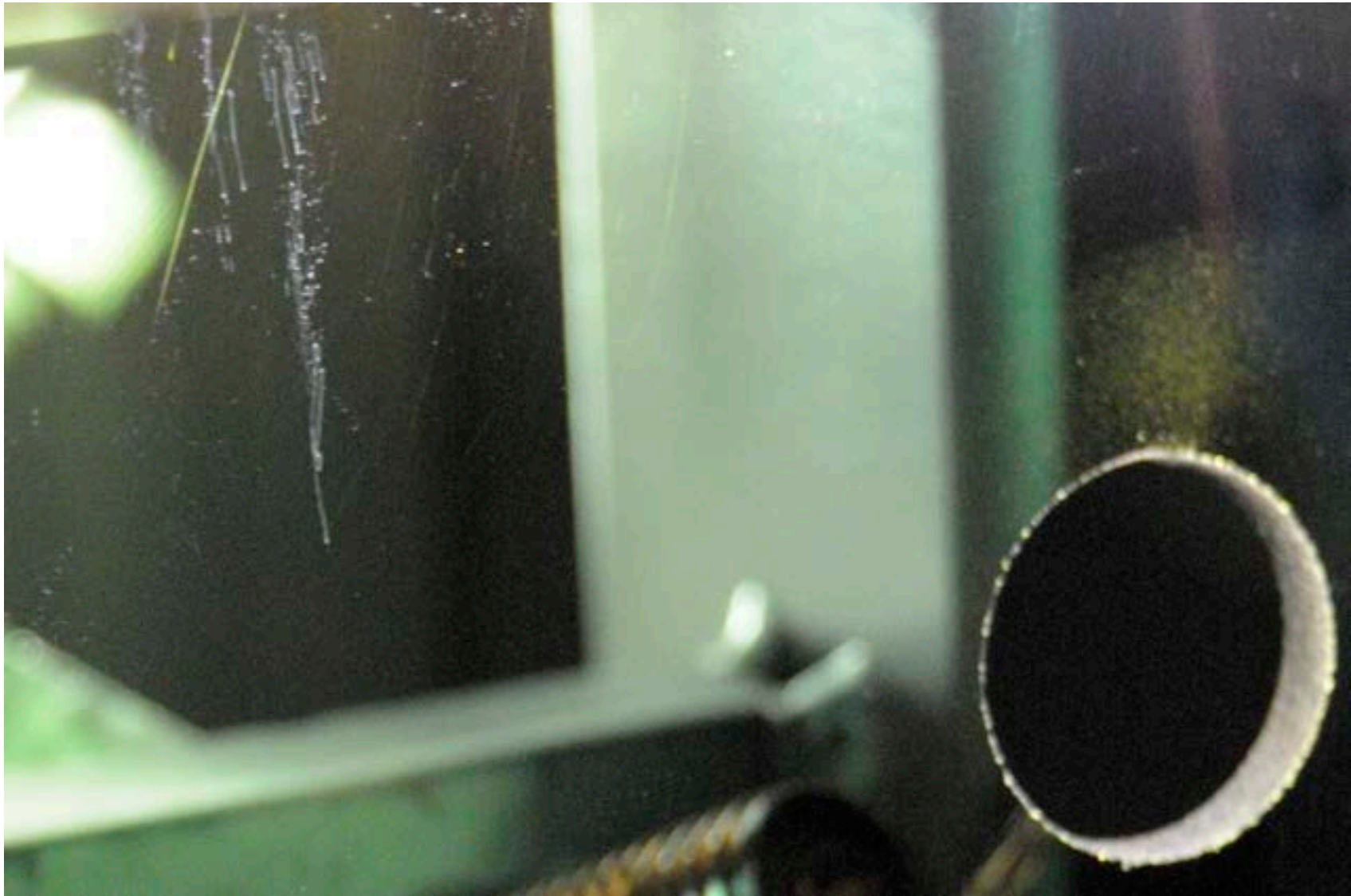
Black glass baffle, ITMX – again I ran my gloved finger down the glass



Black glass baffle – from the back – some features, but VERY CLEAN



Black glass baffle – from the back – some features, but VERY CLEAN



thoughts

- Gloves are known to shed – accounts for finger/hand prints
- Gloves may have become contaminated while working in the chamber (touched mask/glasses/face, glove adjustments when only wearing one pair of gloves leaves the possibility of glove/skin contact) – could account for finger/hand prints
- Black glass shows large particulate, but also a fine layer of something (particulate or “oil”) that is clearly seen when the glass is wiped
- Some particulate found possibly eye lashes / eyebrows
- Bellows not uniformly contaminated: BSC1/BSC8 connection the worst, BSC3/BSC7 the a bit cleaner