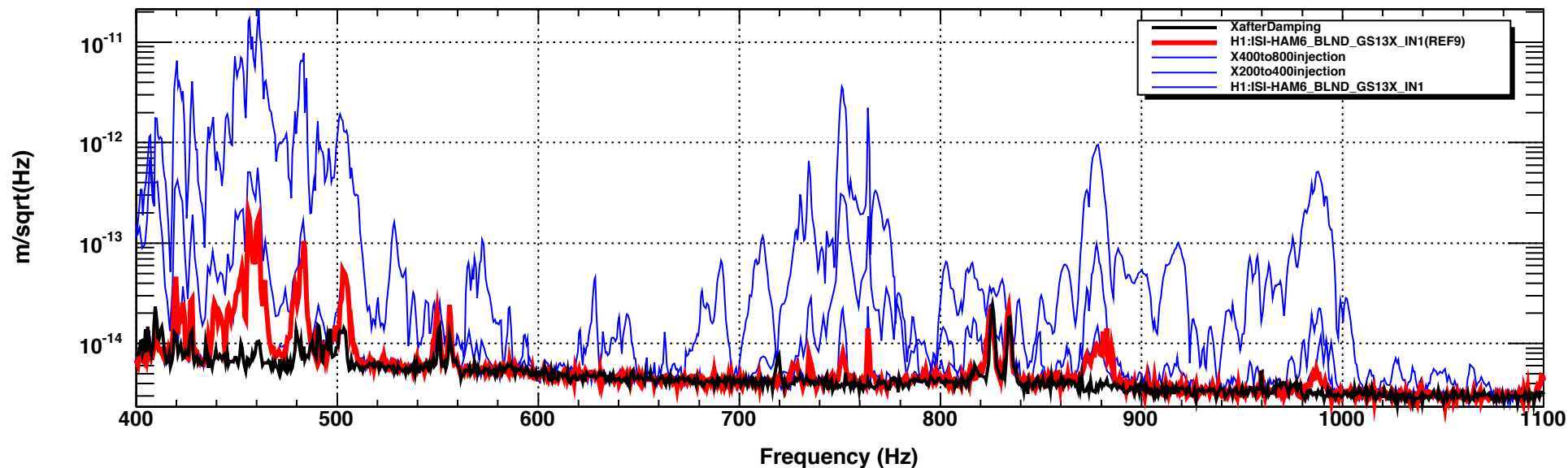


X-axis, HAM6 GS13s, RED: before damping, BLACK: after damping, BLUE: pre-damp vibration injections showing excited peaks

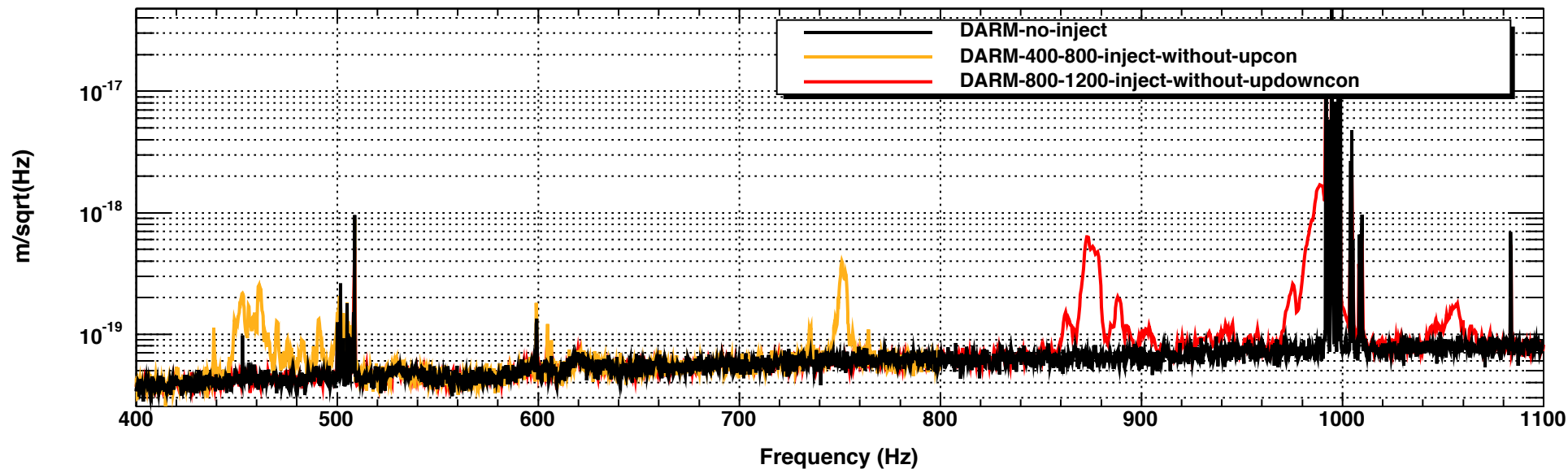


*T0=06/01/1980 00:00:00

*Avg=1/Bin=10

*BW=0

DARM: peaks excited in DARM by vibrations at HAM6 showing that the right peaks were damped



T0=06/01/1980 00:00:00

Avg=1/Bin=4

BW=0