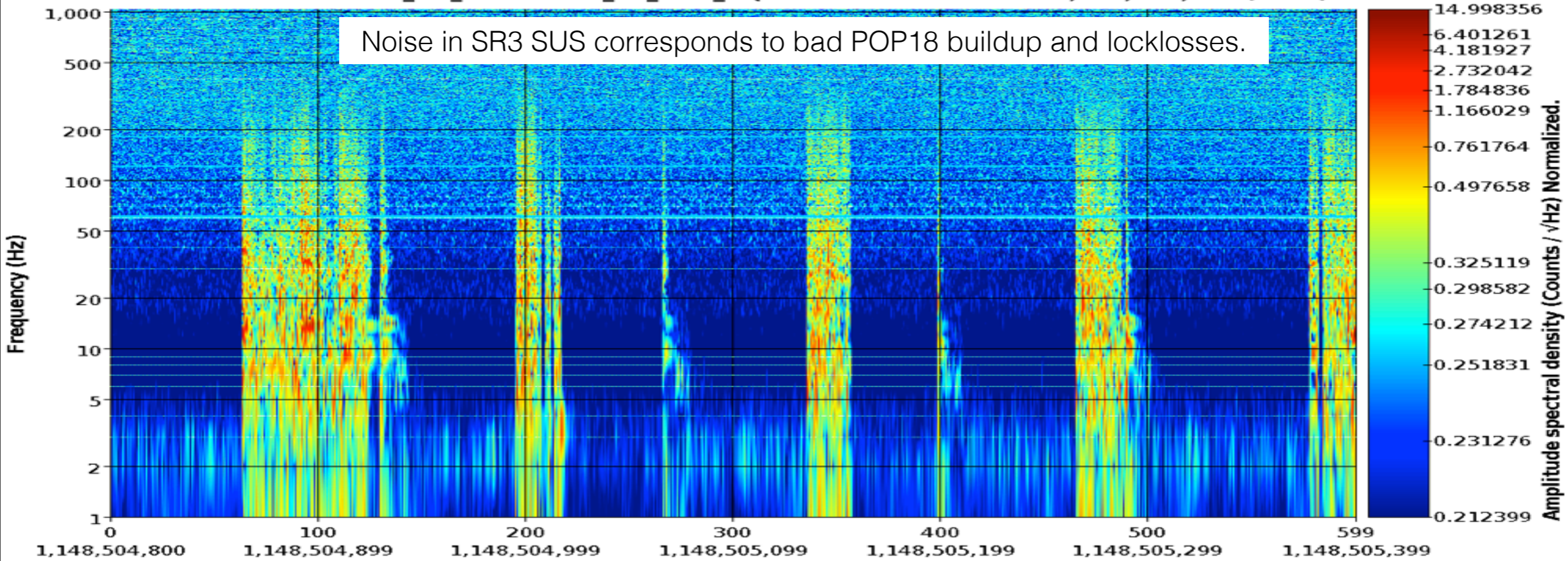


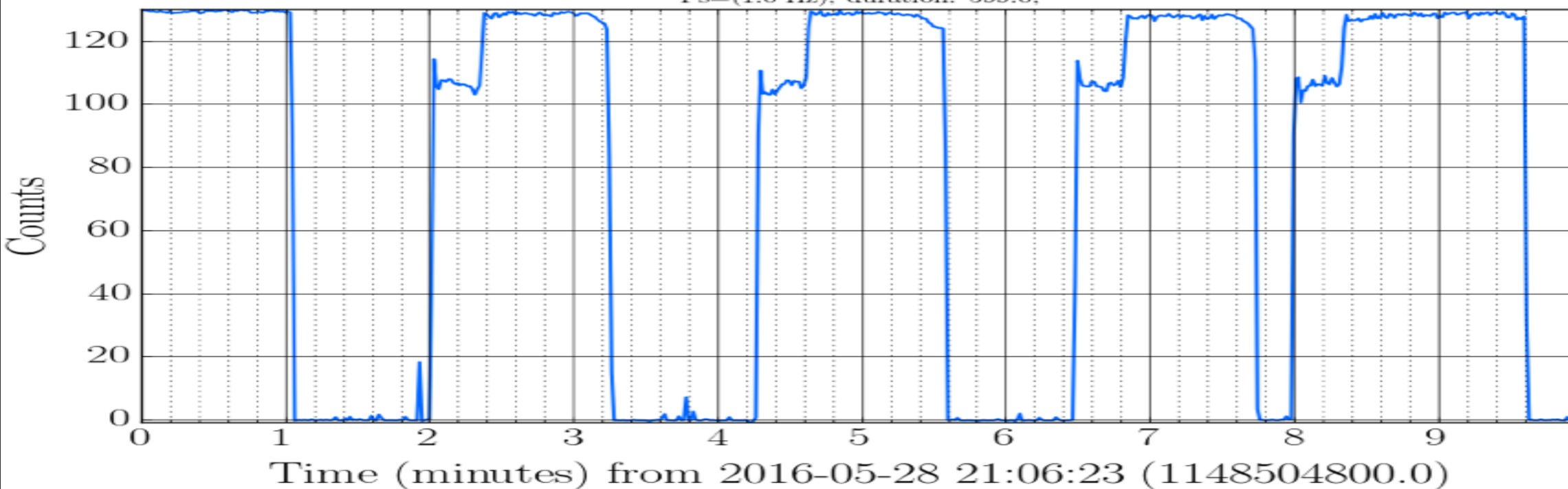
H1:SUS-SR3\_M3\_NOISEMON\_LR\_OUT\_DQ 2016-05-28 21:06:23 - 1,148,504,800 (600s)

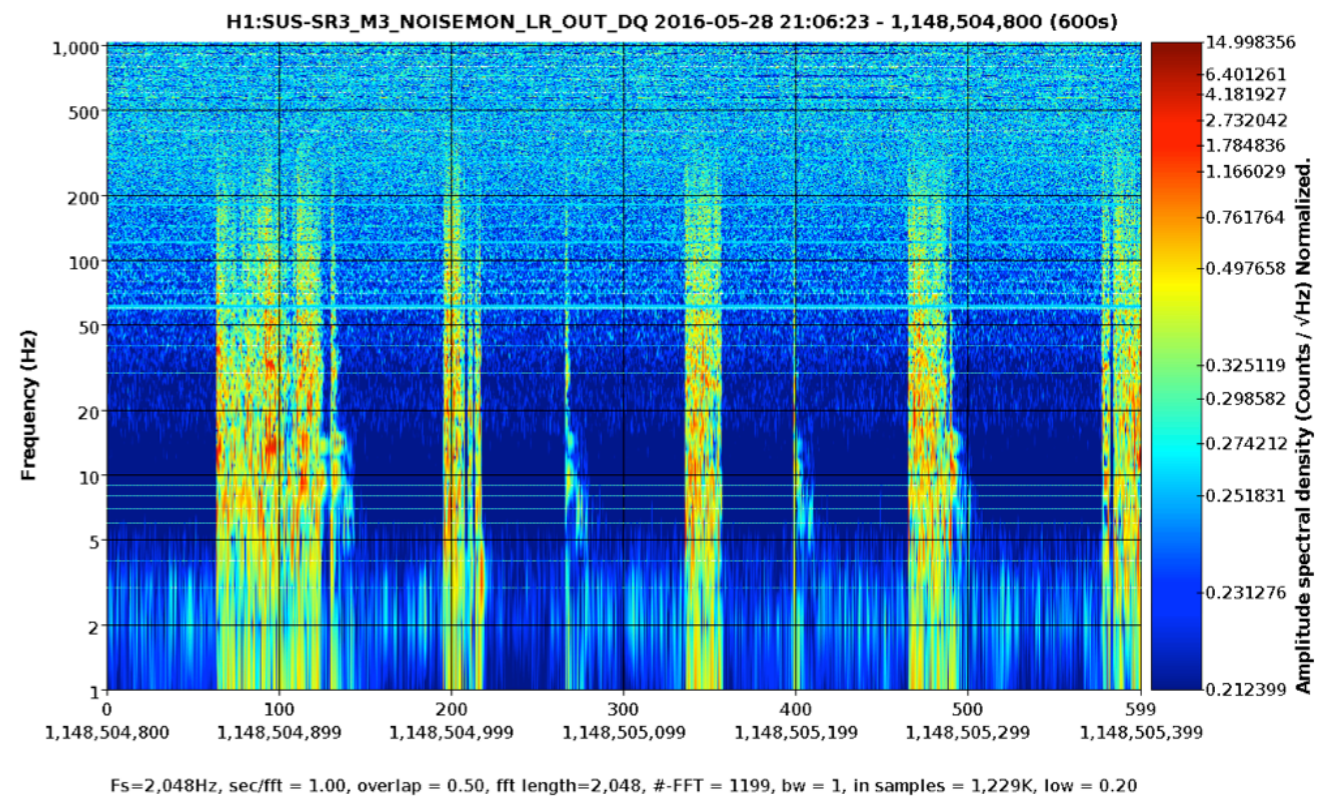
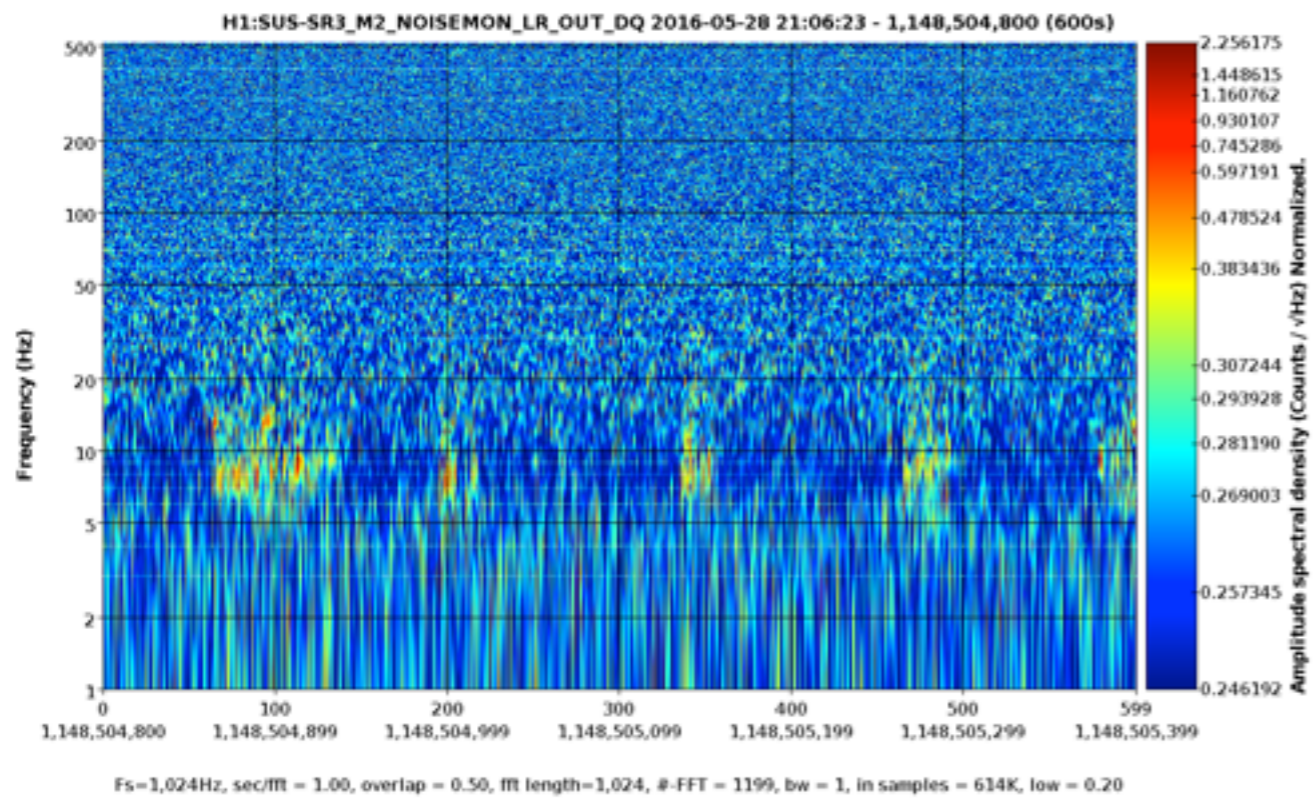
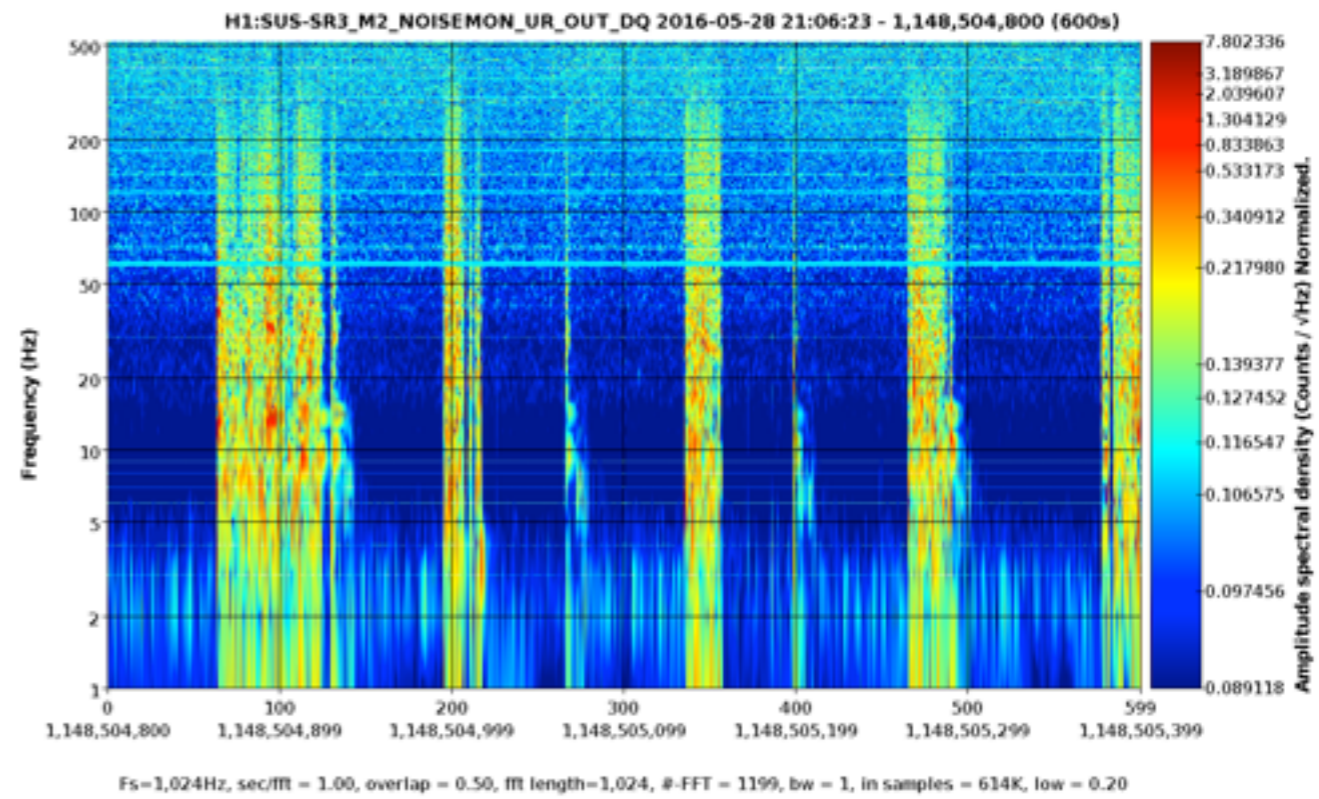
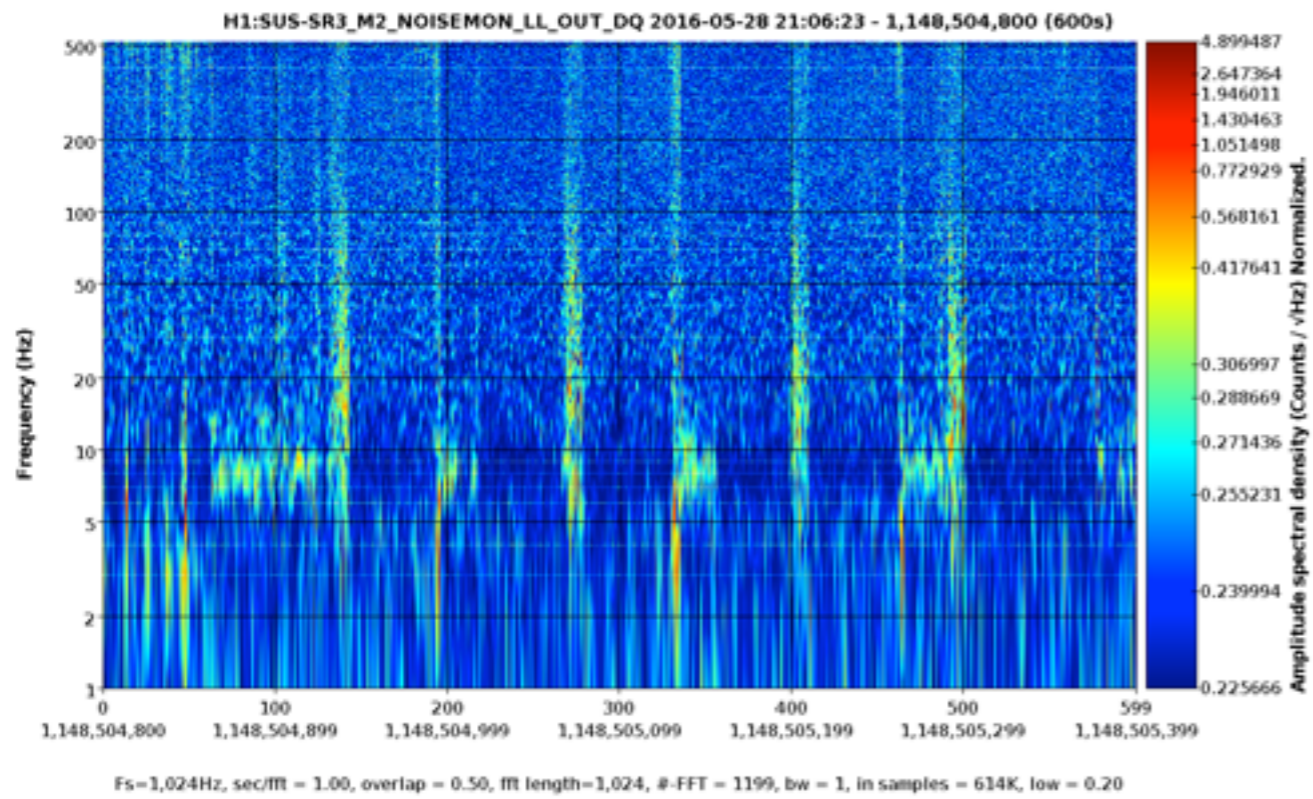


Fs=2,048Hz, sec/fft = 1.00, overlap = 0.50, fft length=2,048, #-FFT = 1199, bw = 1, in samples = 1,229K, low = 0.20

Time series: H1:LSC-POPAIR\_B\_RF18\_IERR\_DQ.mean

Fs=(1.0 Hz), duration: 599.0,

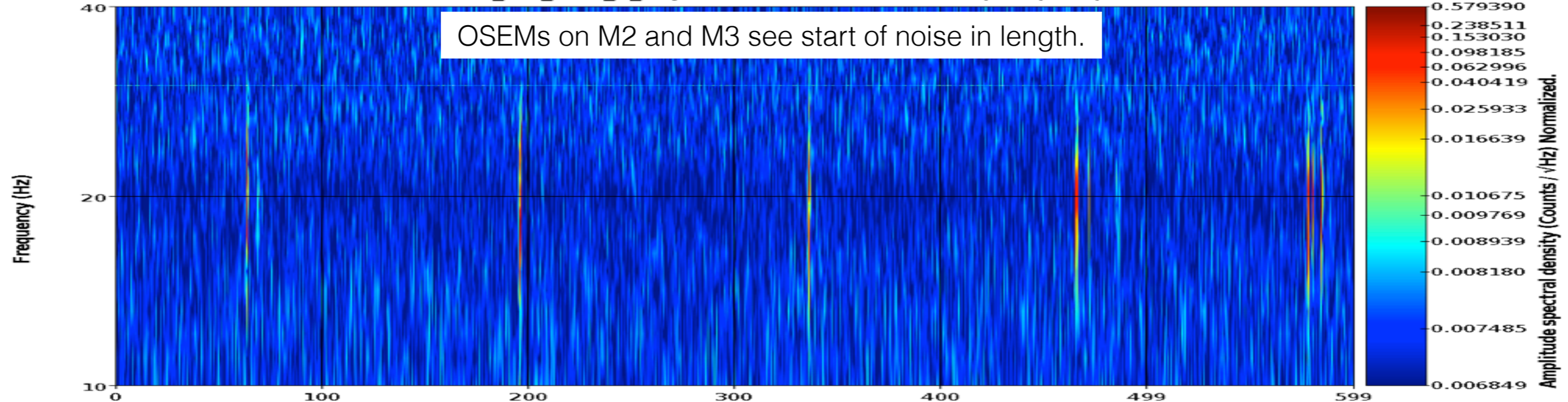




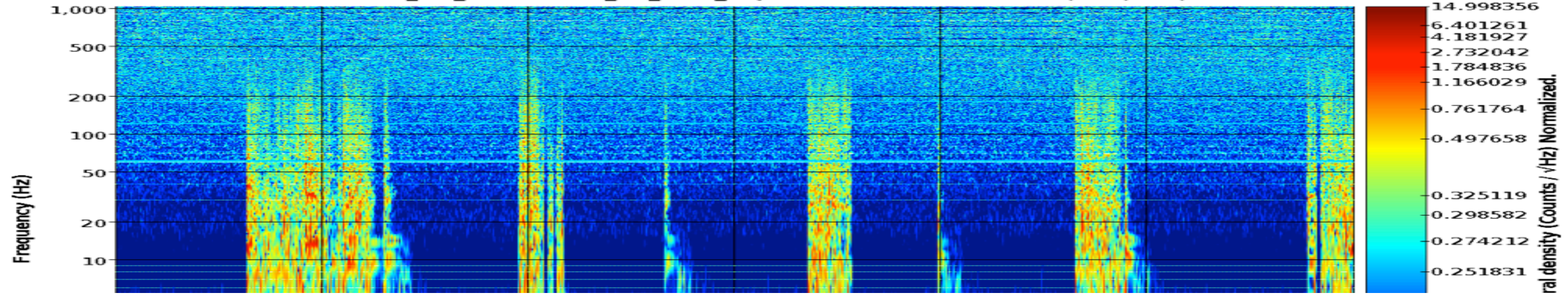
Some (not all) NOISEMONs on SR3 M2 and M3 see the noise.

H1:SUS-SR3\_M2\_WIT\_L\_DQ 2016-05-28 21:06:23 - 1,148,504,800 (600s)

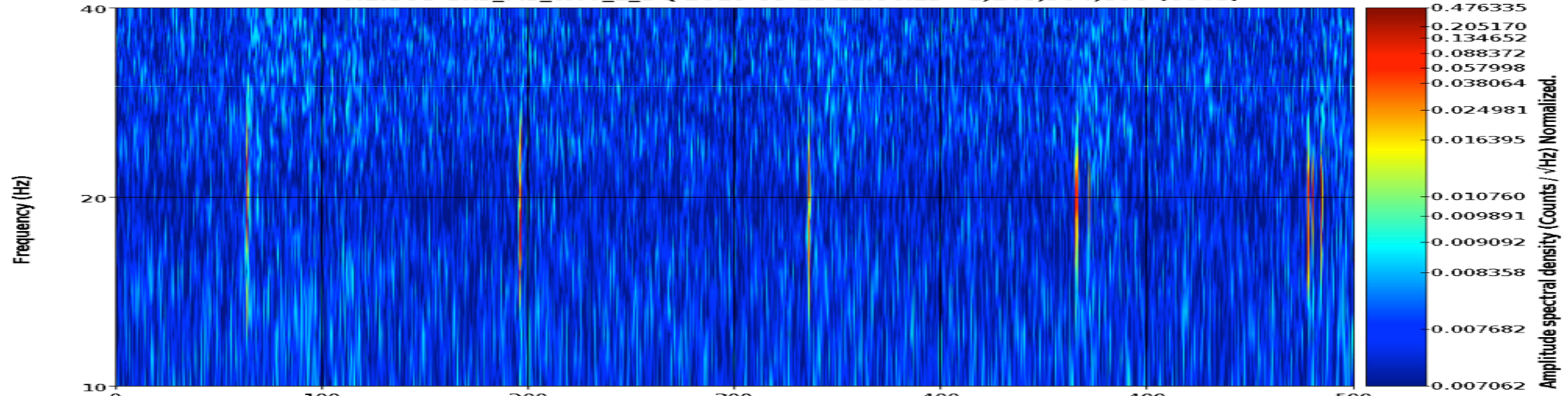
OSEMs on M2 and M3 see start of noise in length.



H1:SUS-SR3\_M3\_NOISEMON\_LR\_OUT\_DQ 2016-05-28 21:06:23 - 1,148,504,800 (600s)



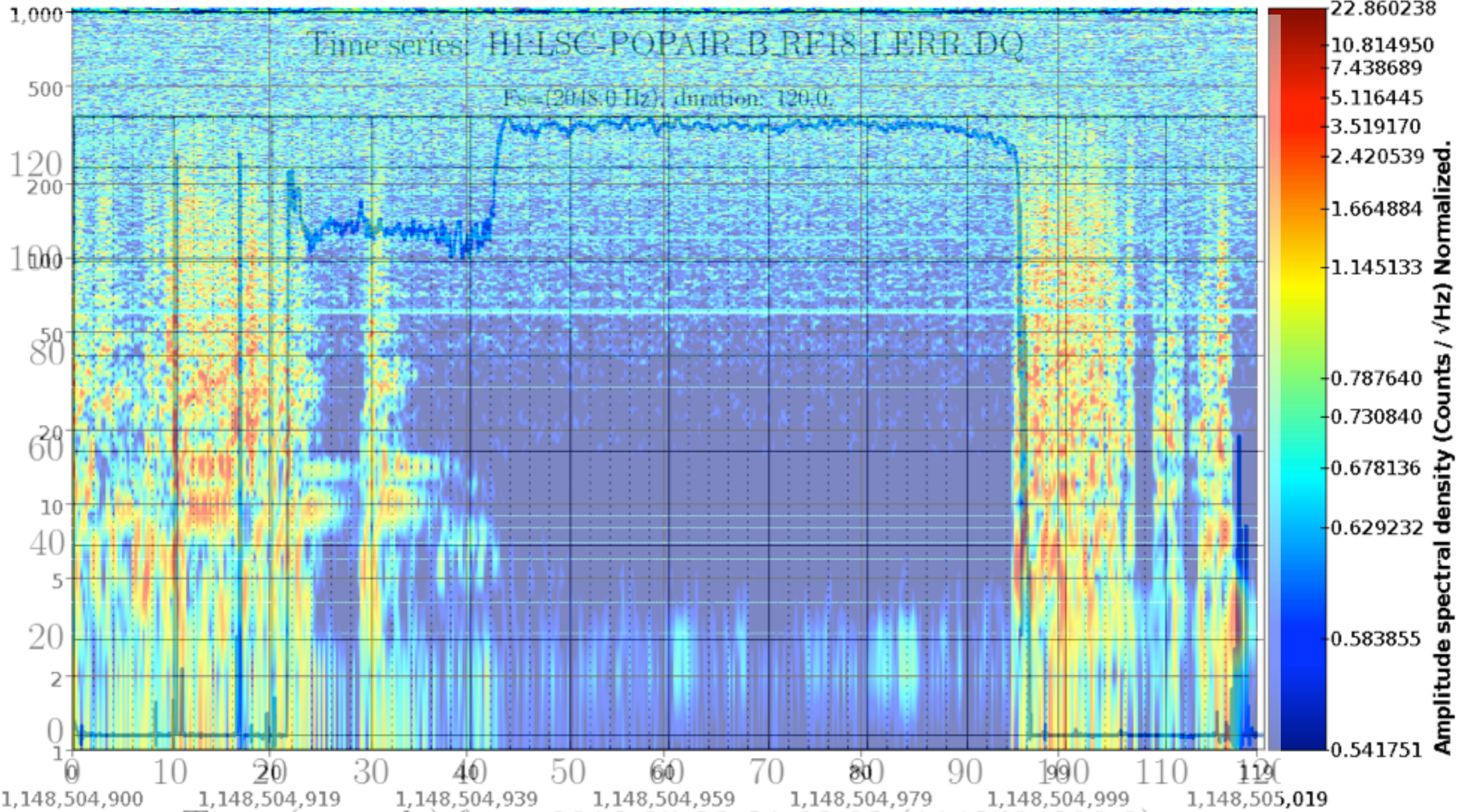
H1:SUS-SR3\_M3\_WIT\_L\_DQ 2016-05-28 21:06:23 - 1,148,504,800 (600s)



Fs=256Hz, sec/fft = 1.00, overlap = 0.75, fft length=256, #-FFT = 2397, bw = 1, in samples = 154K, low = 0.20

POP18 and noise overlaid.

H1:SUS-SR3\_M3\_NOISEMON\_LR\_OUT\_DQ 2016-05-28 21:08:03 - 1,148,504,900 (120s)



Fs=2,048Hz, sec/fft = 1.00, overlap = 0.75, fft length=2,048, #-FFT = 477, bw = 1, in samples = 246K, low = 0.20

POP18 and noise overlaid for a different lock.

