

# BSC 8

		1	2	3	4
AWM	V	392	601	497	497
	T	336	427	524	595
	L	385	357	497	

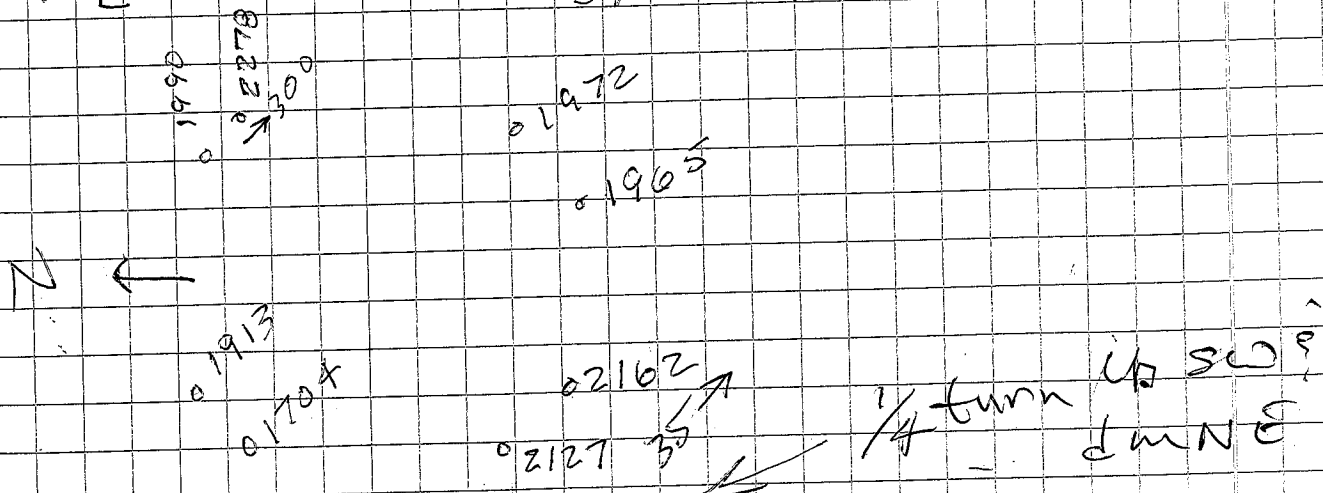
Zero IPS all < 50 cts

		1	2	3	4
V	392	601	496	497	
T	336	427	524	594	
L	385	357			

# \* BSC 6 \*

BS	141	FS	ELEV		BM #1
672.0			-527.5		
		172.3			SW
		172.6	.5		SE
		172.8	.5		(.7) NE Go down
		172.7	.5		(.6) NW " "
		172.4	.4		(.8) SW " up
		671.9			BM #1

	1	2	3	4
V	478	4885	531	513
T	436	556	370	529
L			547	190



BSC 6 Continues

N  
 ↖  
 ↗  
 2/280  
 2200

01976  
 02278

01977  
 01963

	1	2	3	4
V	475	481	533	521
T	436	555	369	530
L			547	191

A from before taking Vert Meas.

V	+43	+7	-2	-9
T				
L				

<del>NE</del>	SW	SE	NE
.8	.6	.6	.6

from Gregg Page 45 (BSC 6)

5/7 after Actuator Attack

	1	2	3	4
V	487	489	535	529
T	442	554	371	526
L			597	192 ?

after O1 Bump

V	486	490	537	524
T	438	553	370	530
L			547	192

7 May 2012

BSC8

	1	2	3	4
V	395	603	497	501
T	333	331	524	596
L	385	361		

Now 7,000 Count Output

V	381	592	479	482
T	332	330	524	596
L	386	362		

$\Delta V$	+14	+11	+18	+19
------------	-----	-----	-----	-----

15 May 2012

BSC 6 HEP 1  
 V T L  
 Corner 1 486 438  
 Sign HV V ✓

Corner 2 489 555  
 Corner 2 look like V2 is V4  
 " " H2 is Lumin H4

↗ V4 is Lumin V2  
 H4 " " H2

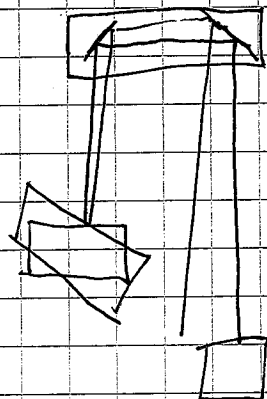
Corner 3 463<sup>4</sup> 70 48  
 V ✓ H

BSC 6 22 May

	1	2	3	4
V	488	491	533	526
T	438	555	361	537
L			551	192

Δ	V	-2	-1	+4	0
	T	0	+2	-9	-7
	L			+4	0

$.0002 = \frac{x}{2000} \cdot 4$   
 $x = 4 \times 10^{-4} = 4 \text{ mm @ HEP Foot}$



IAS exp 220  $\mu$ rad CW

May 23, 2012 BSC 6

	1	2	3	4
V	488	491	533	526
T	437	497	362	537
L		556	552	192

Disconnect V & H Actuators

V	480	482	529	520
T	432	559	361	540
L			551	189

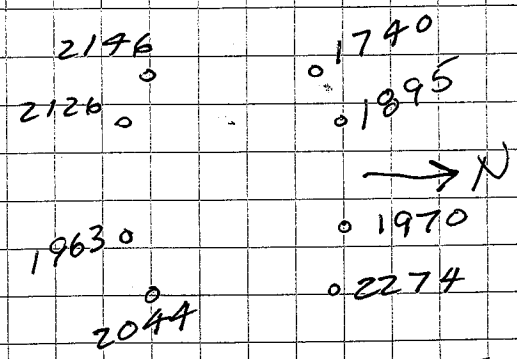
$\Delta V$	+8	+9	+4	+6
T	-5	-3	-1	-3
L			+1	+3

IAS Sets Up (Equipment)

Go ~180  $\mu$ rad CW  
 Turn  $\frac{1}{6}$ , now Go 60 CW  
 Turn  $\frac{1}{2}$

V	<del>481</del> 482	482	527	518
T	413	579	342	559
L			558	180

Go 15  $\mu$ rad CW - Good enough



from Vert Survey Page 133

$\Delta V$	NW	SW	SE	NE
T	-3	+6	+4	-5
L				

23 May 2012 BSC 6 cont

## Reconnect Actuators

	1	2	3	4
V	487	489	533	525
T	415	577	337	562
L			561	181

$\Delta$	V	T	L	
	-9	-2		-12 - Vent from pose 133
				-3 - from after fuel <sup>adjust</sup> plus AM
				-1

$\sim .1 \text{ mm} \Rightarrow .000050 \text{ rad} = 50 \mu\text{m}$   
 $\sim .003 \text{ rotation} \Rightarrow .000000$