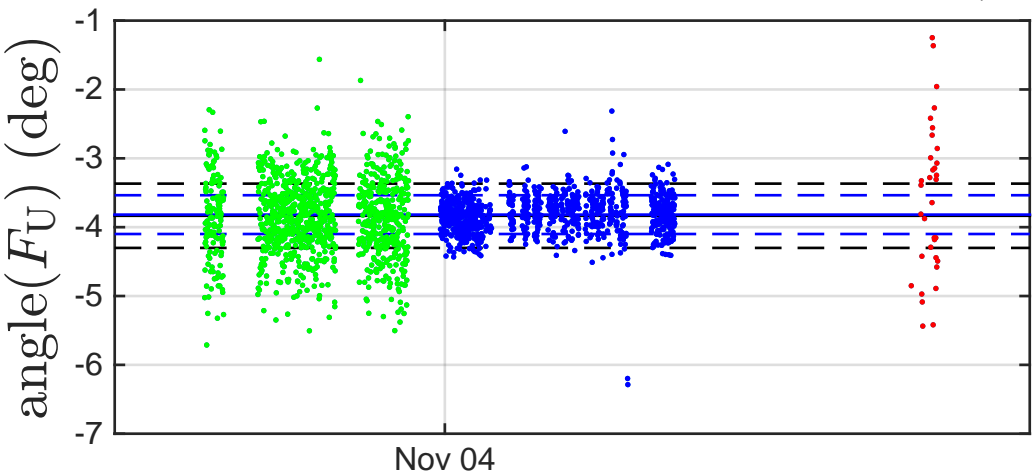
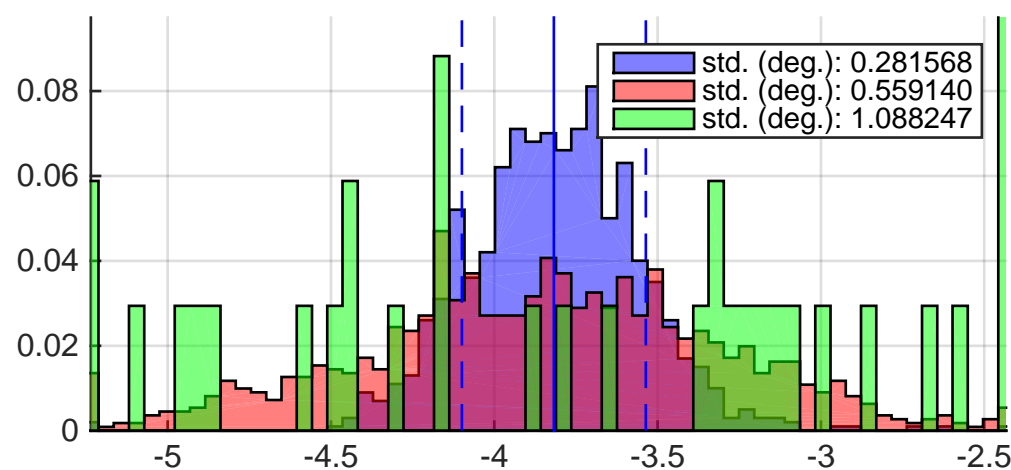
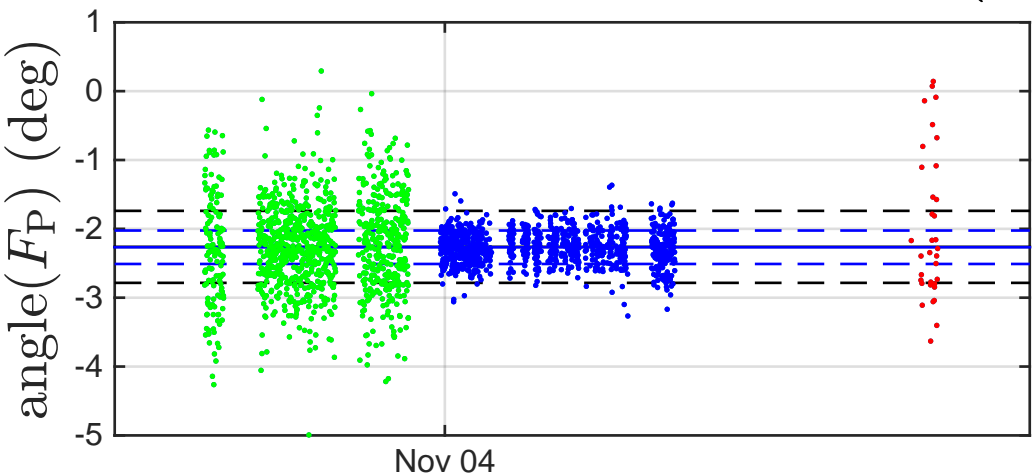
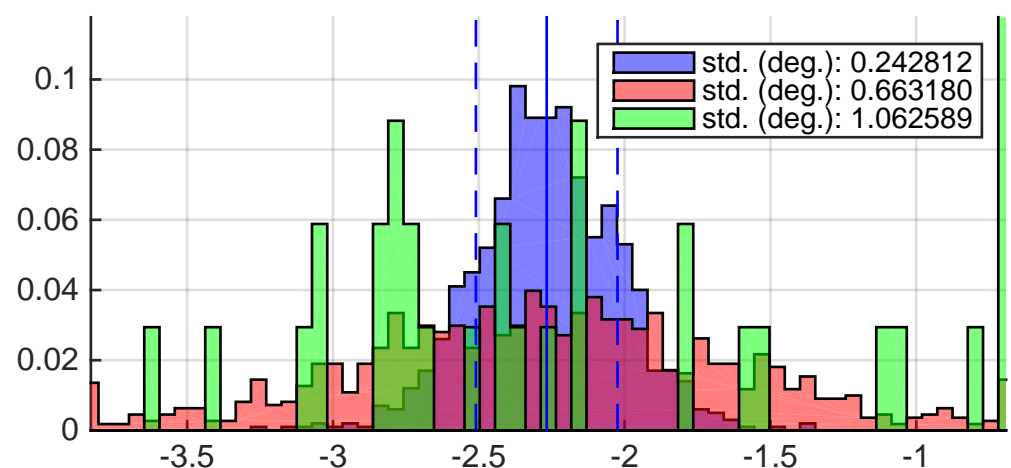
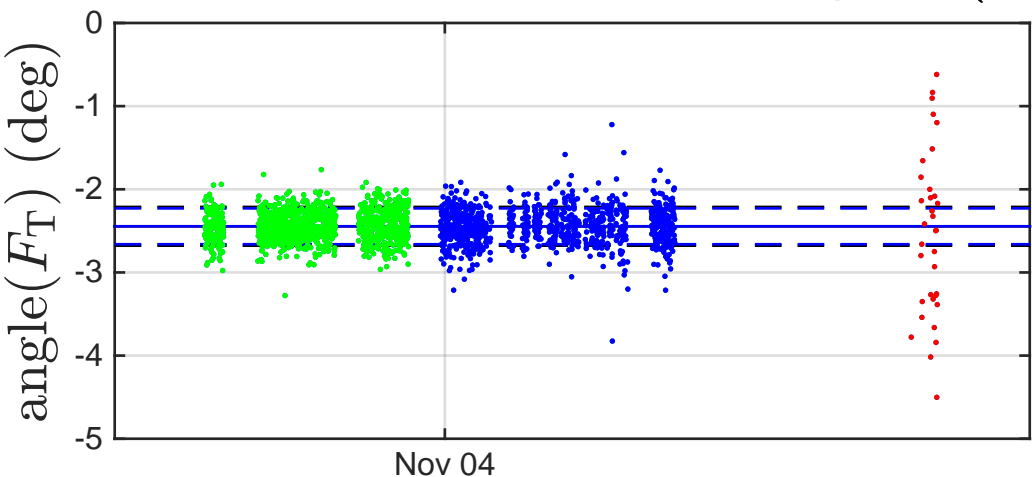


L1, L2 and L3 actuation strengths (phase) $\text{angle}(F_U) = -3.8177 \pm 0.2816 \text{ (deg)}$ **L1, L2 and L3 actuation strengths (phase)** $\text{angle}(F_P) = -2.2672 \pm 0.2428 \text{ (deg)}$ **L1, L2 and L3 actuation strengths (phase)** $\text{angle}(F_T) = -2.4452 \pm 0.2158 \text{ (deg)}$ 