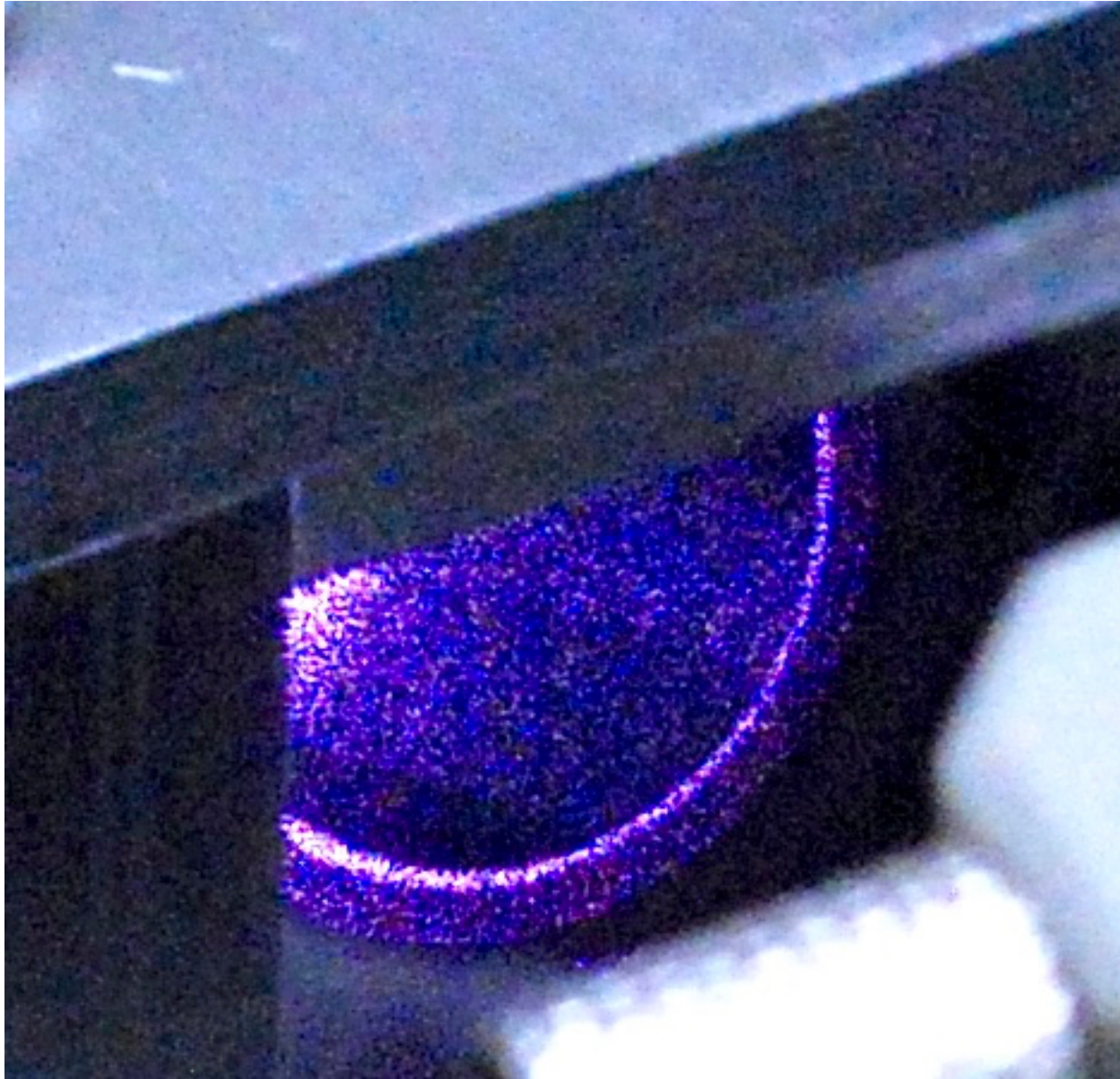


Beam Change on IO beam dump on Input Beam to H1, Oct 2012 to Nov 2016: Cheryl Vorvick, 5 Feb 2017

Nov 15, 2016



Oct 10, 2012



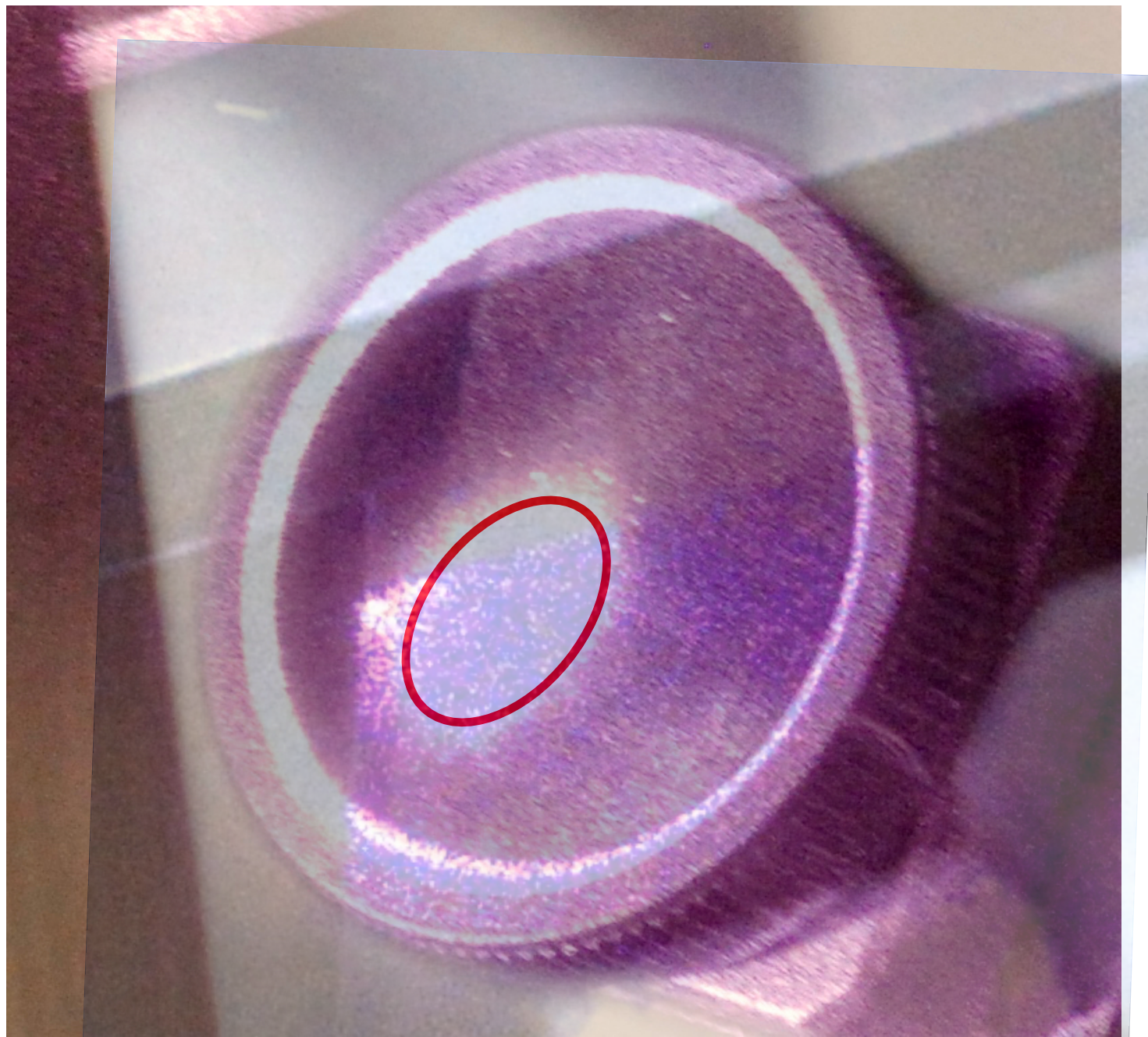
Oct 10, 2012
beam circled



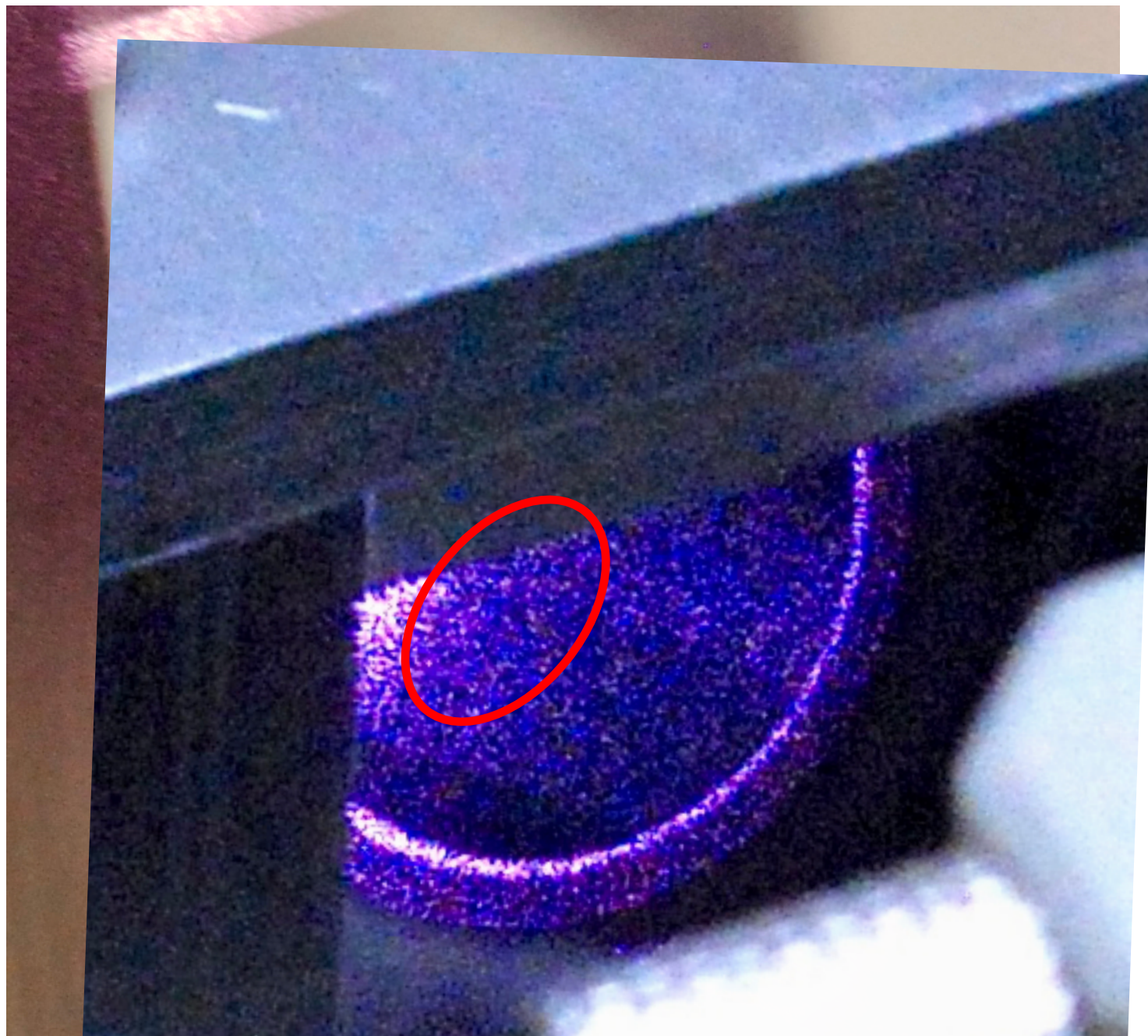
Beam Change on IO beam dump on Input Beam to H1, Oct 2012 to Nov 2016: Cheryl Vorvick, 5 Feb 2017

Oct 10, 2012
beam circled

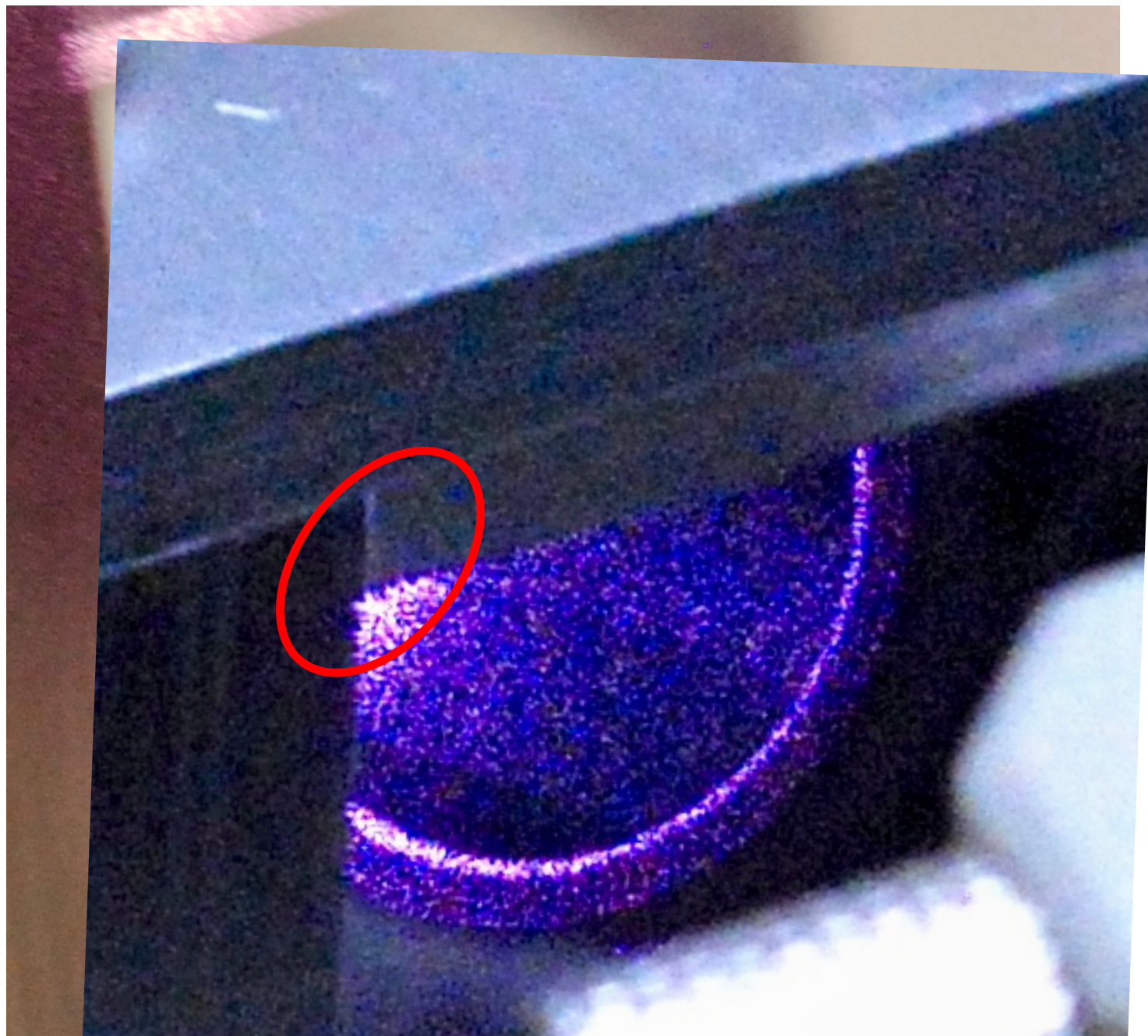
Nov 15, 2016
Overlaid
Transparent



Nov 15, 2016
showing where
beam should be
but is absent



Nov 15, 2016
showing
approximate
current beam
location



Oct 10, 2012
approximate
current beam
location circled,
which suggests
the beam could
be clipping on the
edge of the optic,
which would
produce
significant scatter

