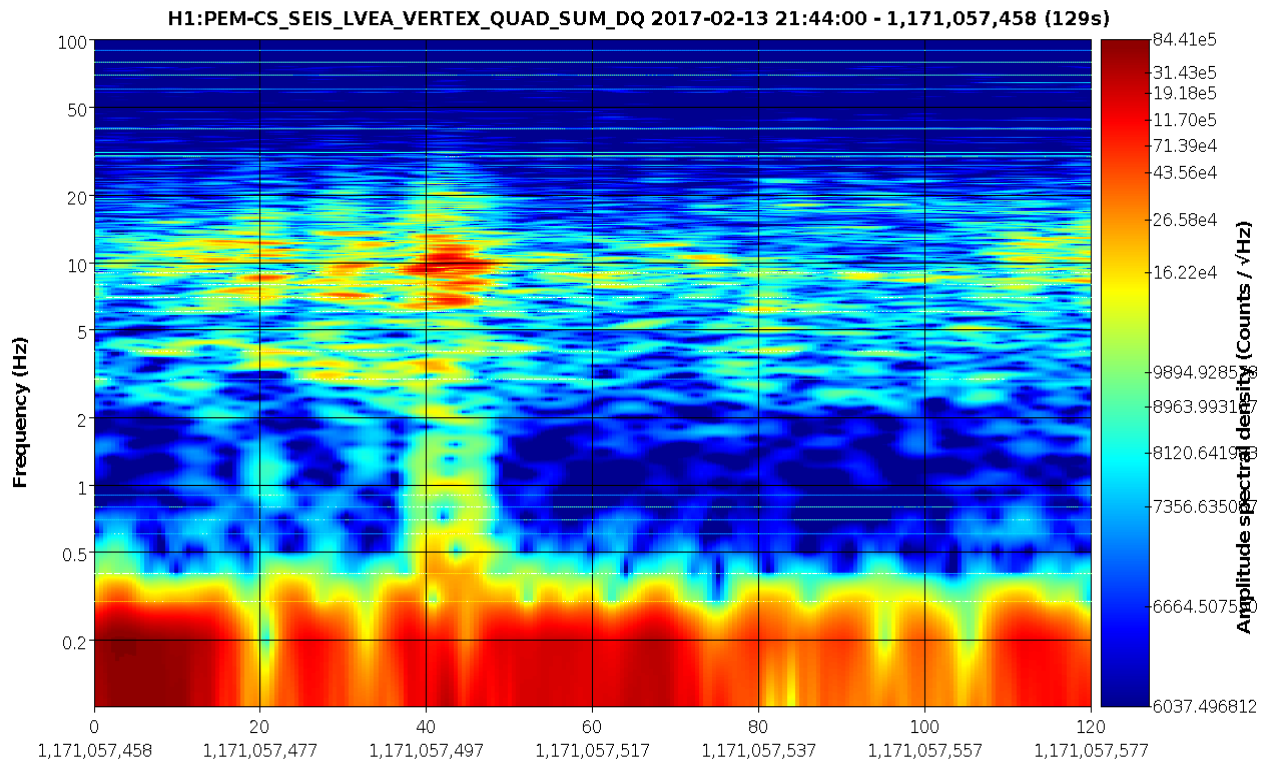
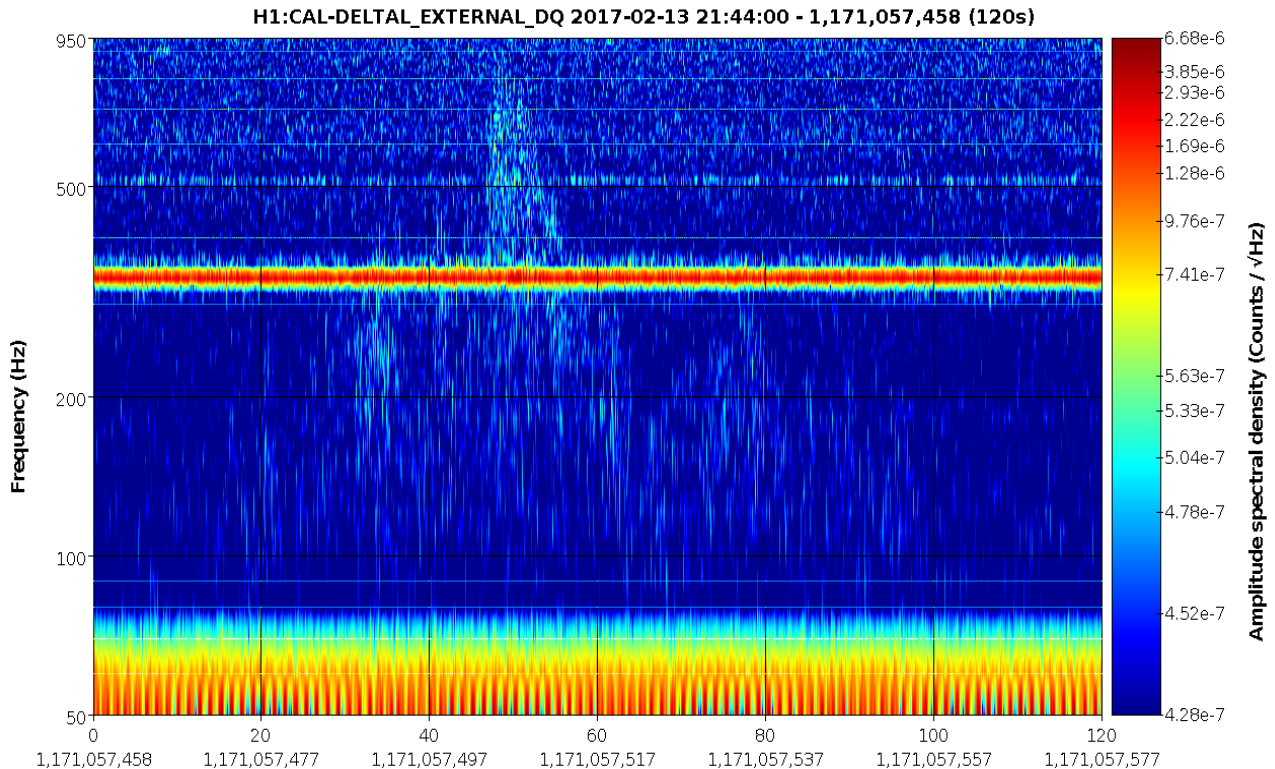


Ground Motion



Fs=256Hz, sec/fft = 10.00, overlap = 0.95, fft length=2,560, #-FFT = 239, bw = 0.10, in samples = 33K, low = 0.20

DARM



Fs=16,384Hz, sec/fft = 0.10, overlap = 0.90, fft length=1,638, #-FFT = 11980, bw = 10, in samples = 1,966K, low = 0.50

Zoom in on DARM showing ~ 2.1 arches per second

