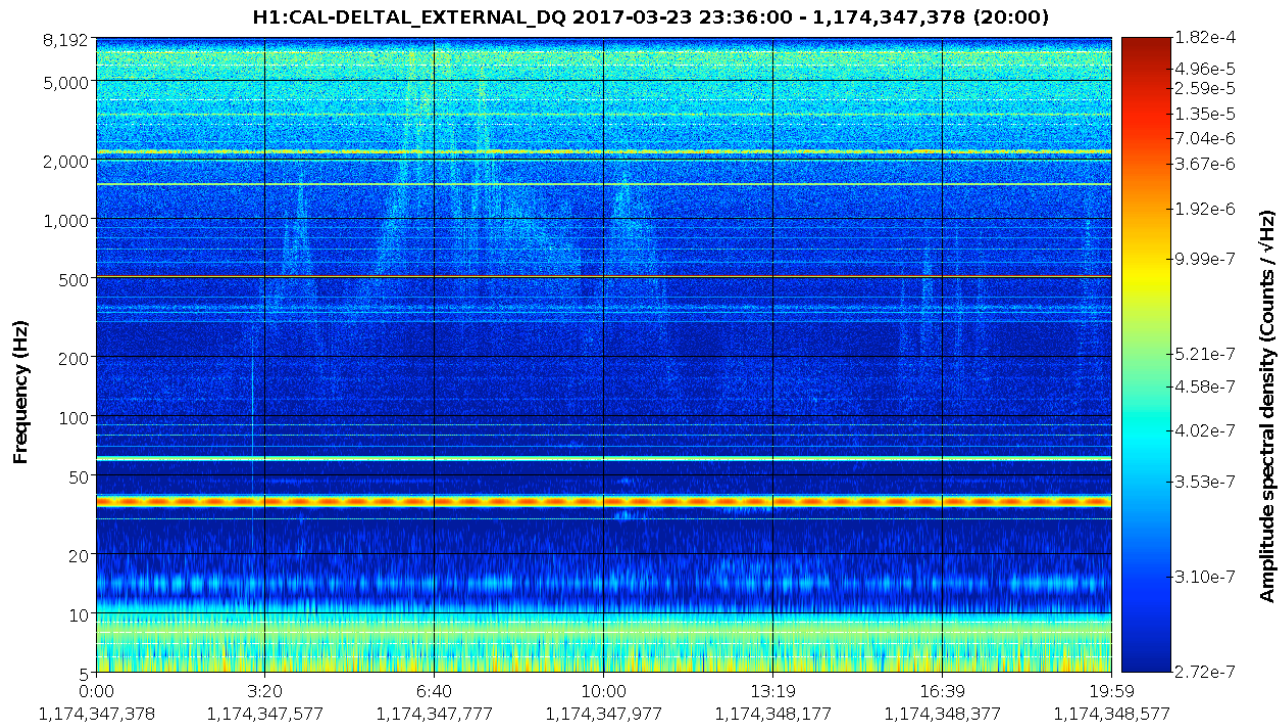
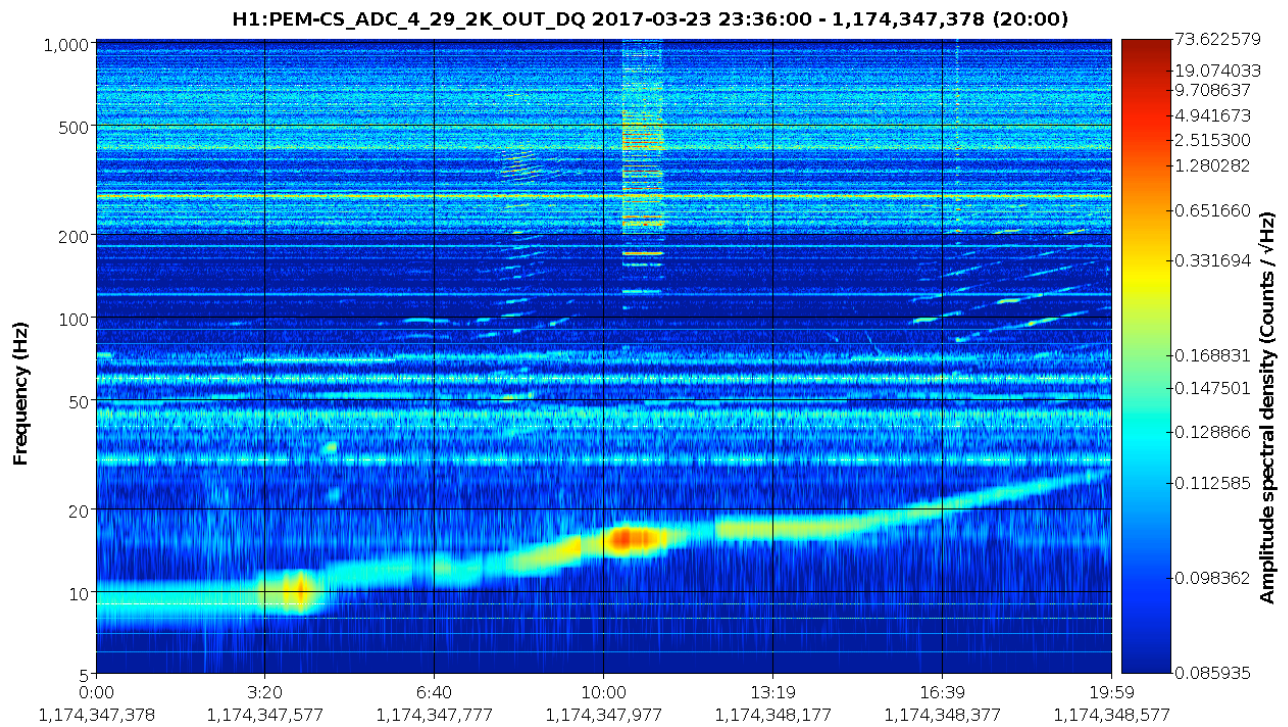


# Shaker sweep 8-30 Hz, in DARM (top), and accelerometer mounted under the Swiss cheese baffle near HAM2 (bottom)



Fs=16,384Hz, sec/fft = 1.00, overlap = 0.90, fft length=16,384, #-FFT = 11987, bw = 1, in samples = 19,661K, low = 0.20



Fs=2,048Hz, sec/fft = 1.00, overlap = 0.90, fft length=2,048, #-FFT = 11980, bw = 1, in samples = 2,458K, low = 0.20