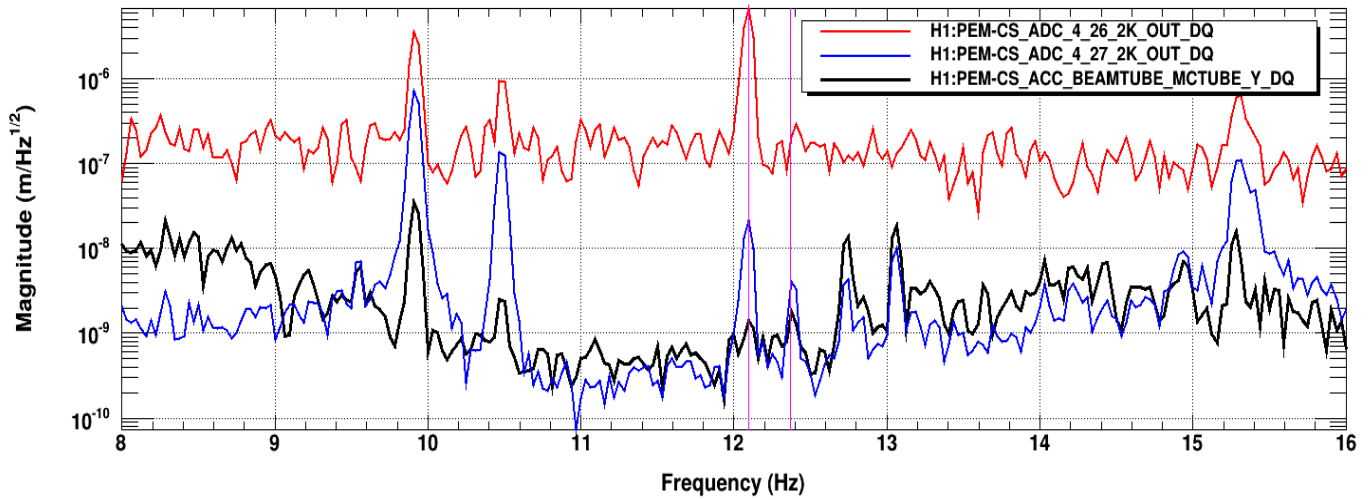


Tapping beam tube, vibrometer (red) on Swiss Cheese baffle

Tapping beam tube excites both baffles, RED: laser vibrometer on swiss cheese baffle, so 12.095 Hz, BLUE: X-axis accelerometer on beam tube, BLACK: Y-axis



Tapping beam tube, vibrometer (red) on Eye baffle

Tapping beam tube excites both baffles, RED: laser vibrometer on eye baffle, so 12.37 Hz, BLUE: X-axis accelerometer on beam tube, BLACK: Y-axis

