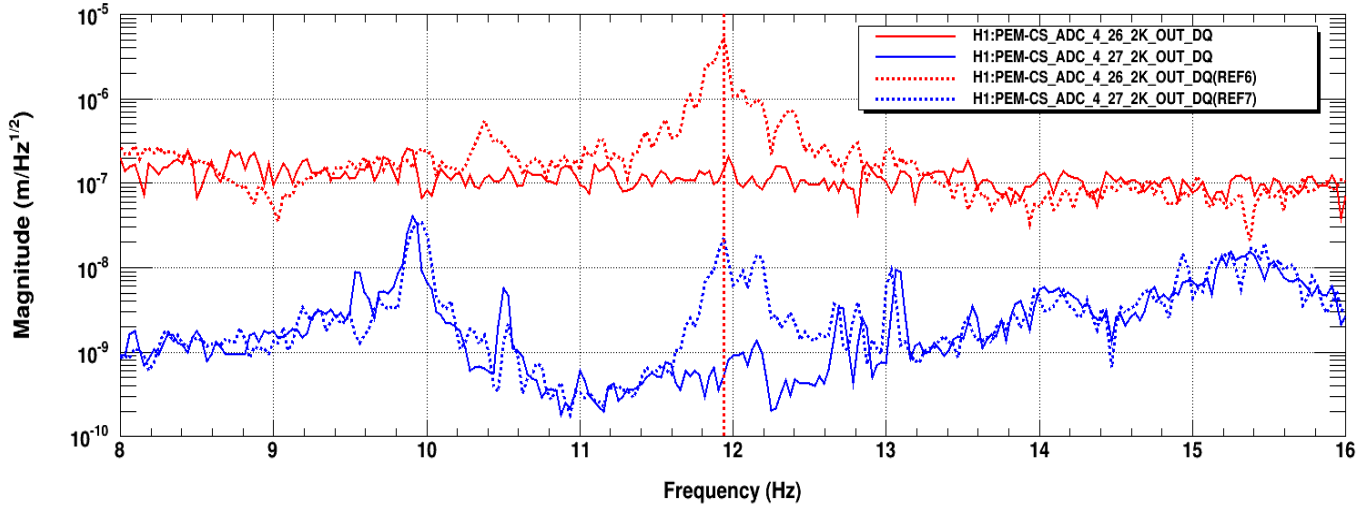


Solid: after damping, Dash: before, RED: vibrometer, BLUE: X-axis MC tube accelerometer

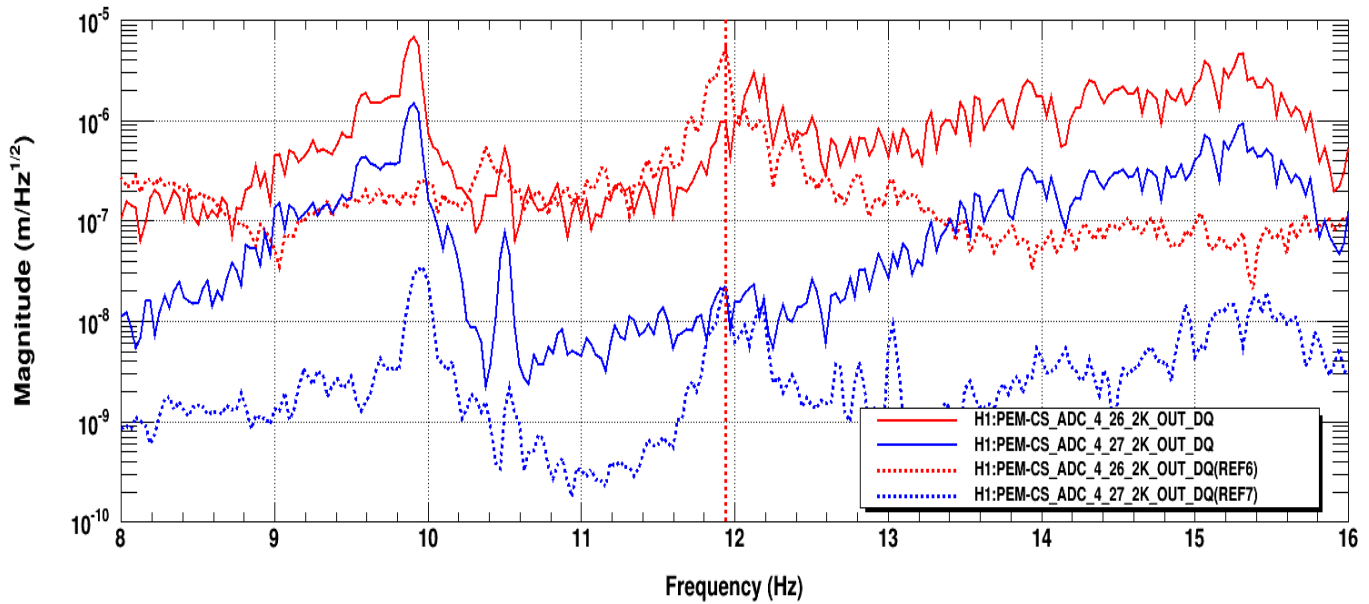


*T0=09/05/2017 18:31:26

*Avg=1

BW=0.0468742

Same color scheme, solid is now with banging instead of ambient in order to bring up the baffle peak



*T0=09/05/2017 18:31:26

*Avg=1

BW=0.0468742