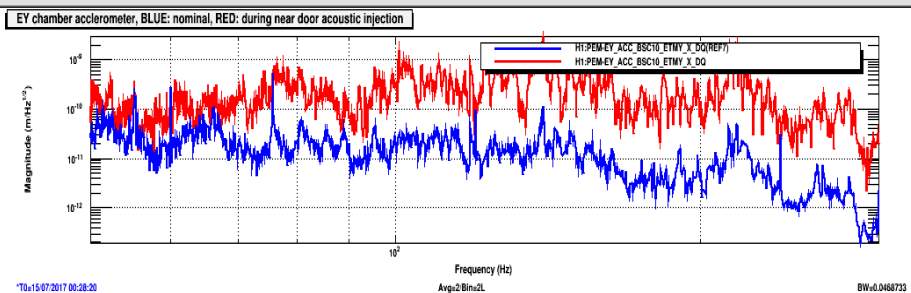
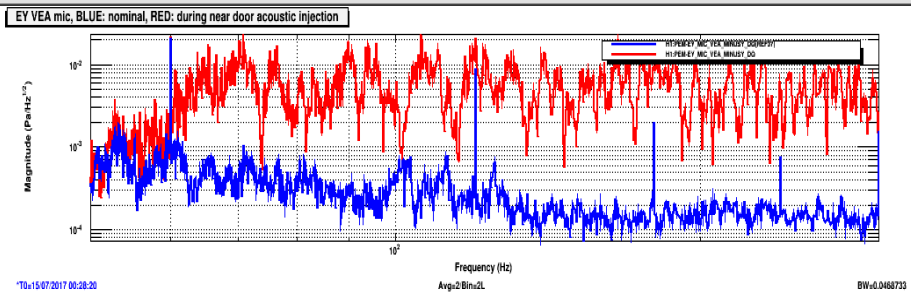
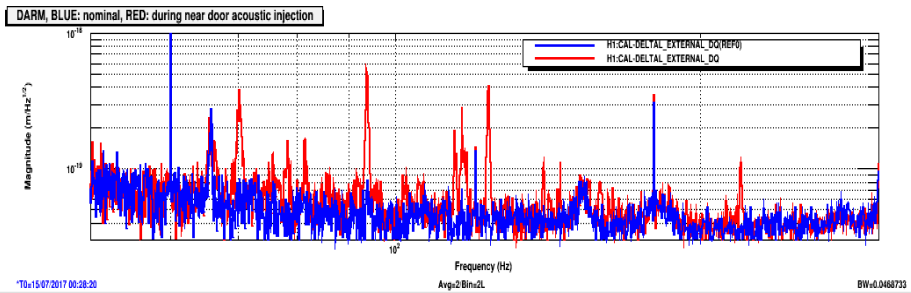


## Near-door acoustic PEM injection

Plots: DARM, MIC, ACC. The 94 Hz peak is excitable by quiet shaking of the beam tube (not shown), so the sound pressure from the speaker in this injection couples at 94 Hz by shaking the beam tube.



Likely bird pecks from Hveto, the sound from the peck is not loud enough (second row) to account for DARM (top row), but the chamber accelerometer signal is, so the direct vibrational coupling through the pipe to the vacuum envelope is the likely coupling route.

