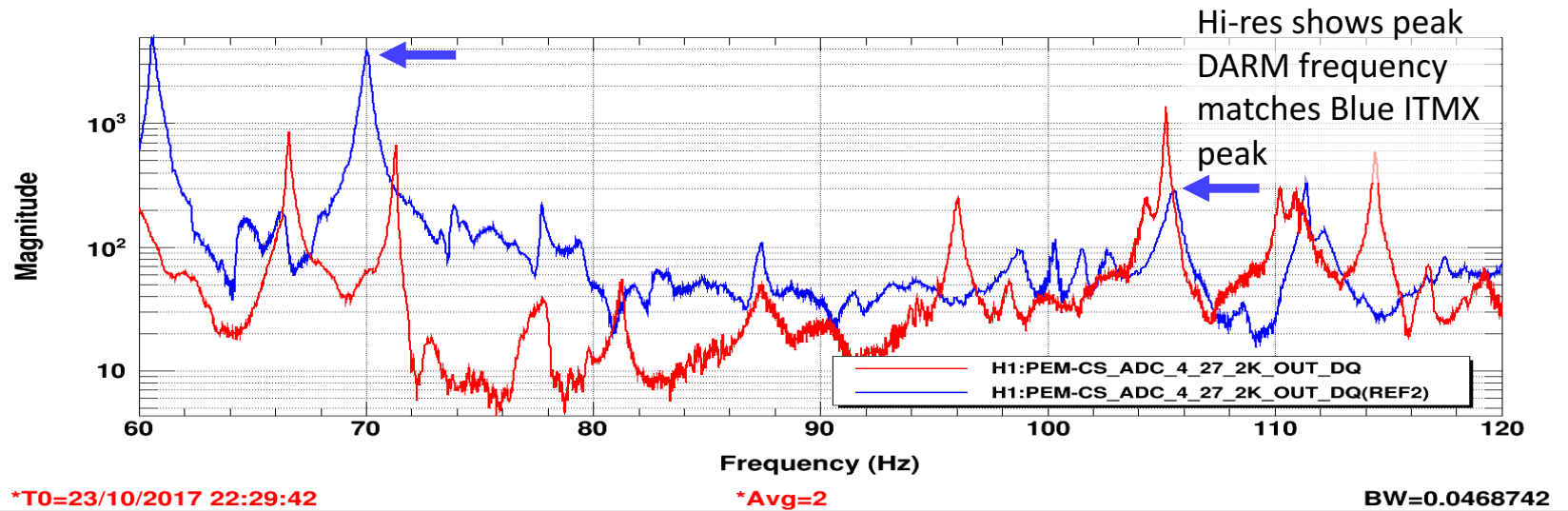
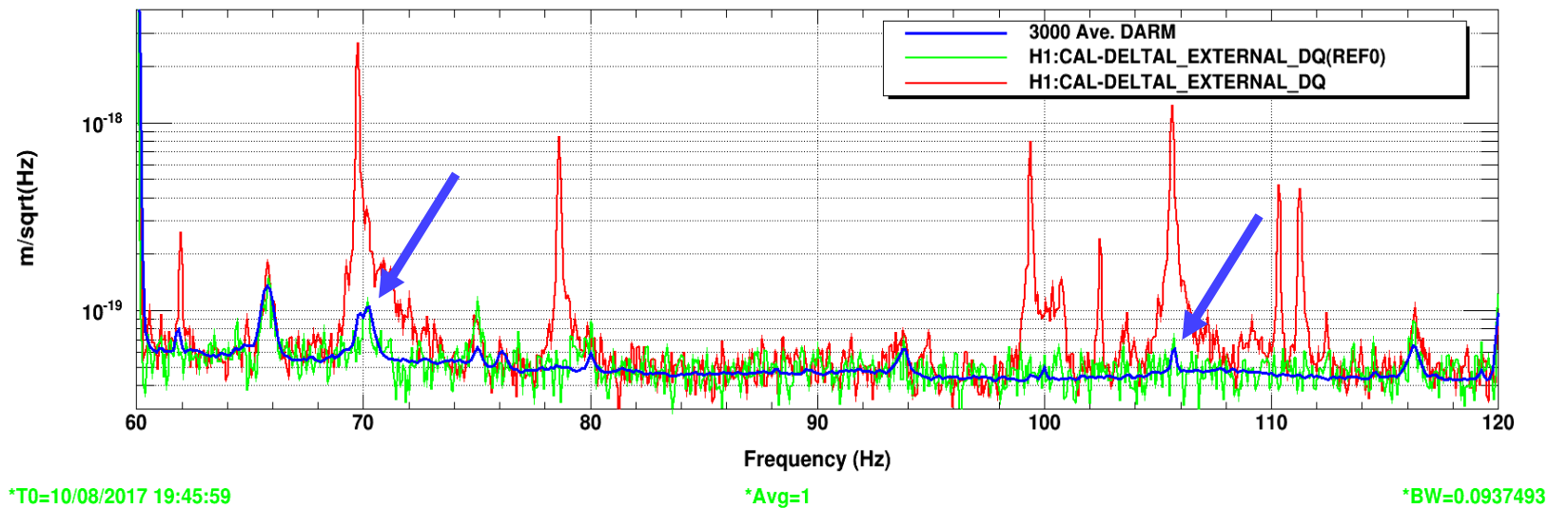


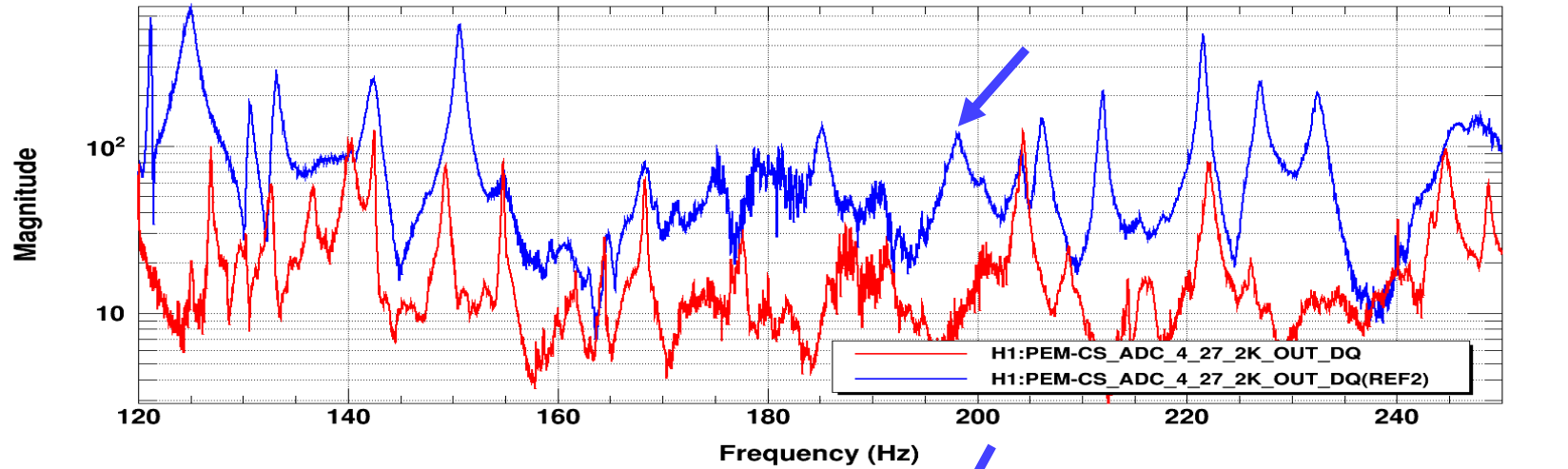
In-chamber  
accelerometers on,  
BLUE: ITMX elliptical  
baffle, RED: ITMY  
elliptical baffle



Peaks from ITMX  
elliptical baffle  
match peak  
frequencies in  
DARM, BLUE: no  
injection, RED: HEPI  
injection, Aug., 2017



In-chamber  
accelerometers on,  
BLUE: ITMX elliptical  
baffle, RED: ITMY  
elliptical baffle

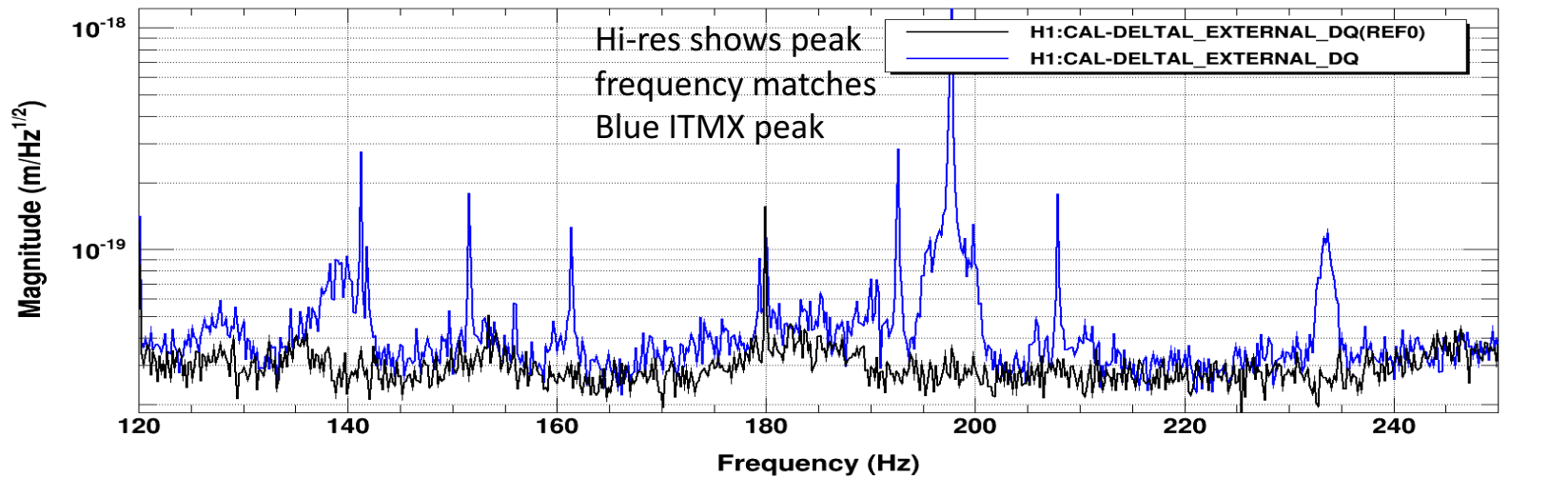


\*T0=23/10/2017 22:29:42

\*Avg=2

BW=0.0468742

Peak from ITMX  
elliptical baffle  
match peak  
frequencies in  
DARM, BLACK: no  
injection, BLUE: HEPI  
injection, Nov., 2016

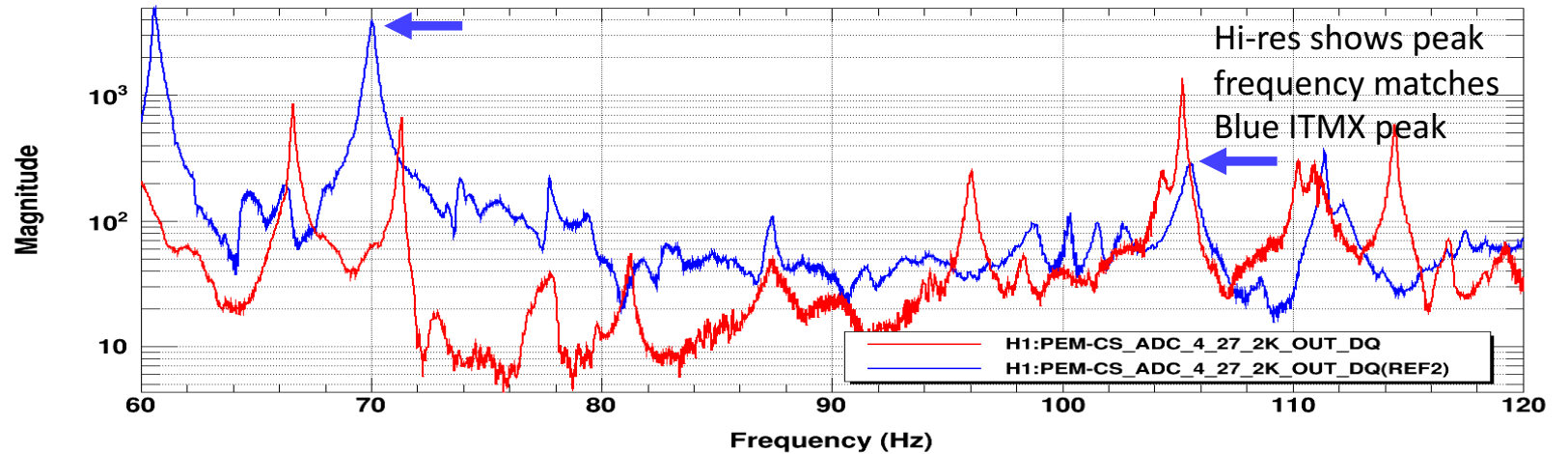


\*T0=26/11/2016 00:25:51

\*Avg=1/Bin=3

BW=0.0937493

In-chamber  
accelerometers on,  
BLUE: ITMX elliptical  
baffle, RED: ITMY  
elliptical baffle

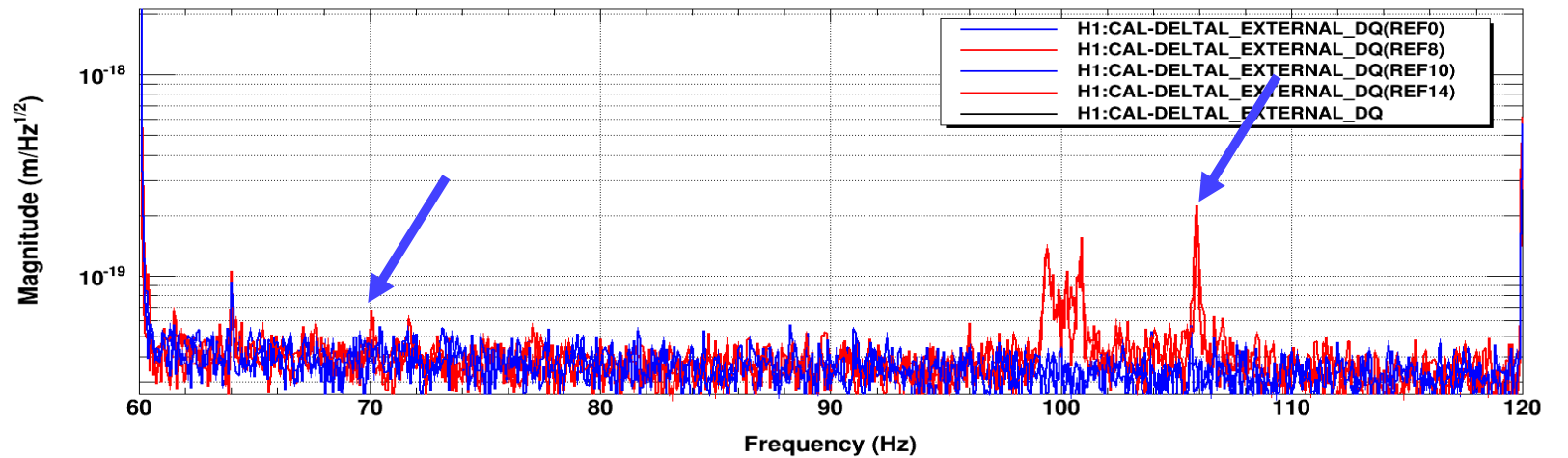


\*T0=23/10/2017 22:29:42

\*Avg=2

BW=0.0468742

Peaks from ITMX  
elliptical baffle have  
been in DARM for a  
long time, BLUE: no  
injection, RED:  
shaker injection,  
Jun., 2016



\*T0=06/02/2016 02:07:08

\*Avg=1

\*BW=0.0937493