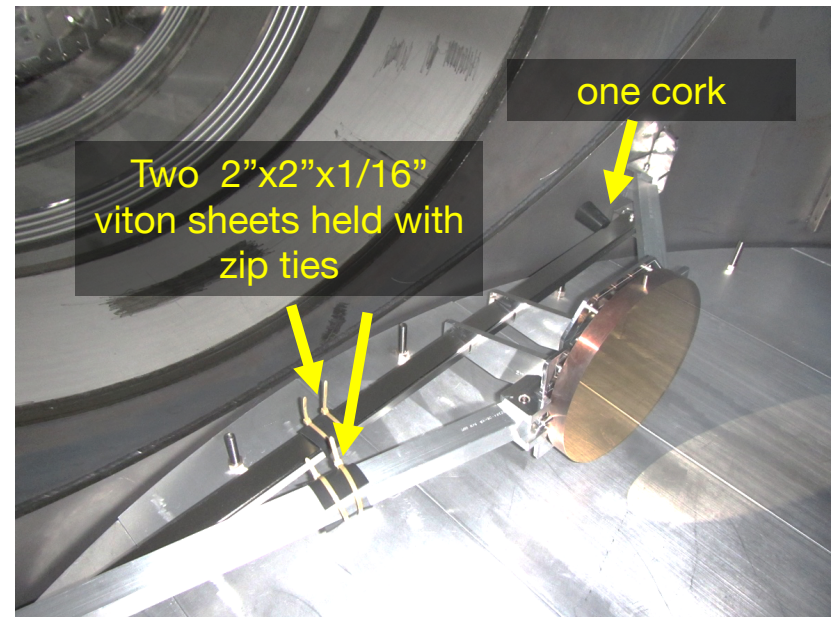
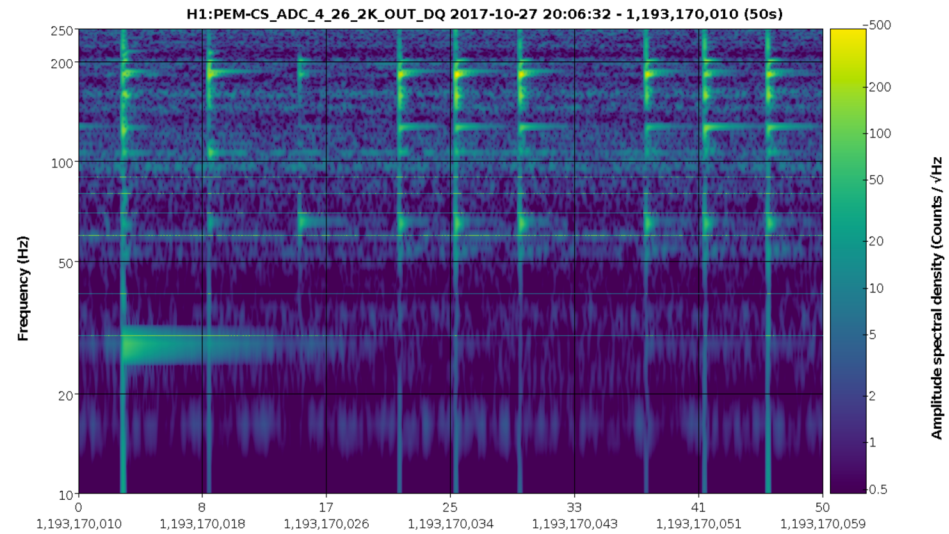


Minimal damping of ITMY TCS mirror 2 support



Before damping. Spectrograms from accelerometer mounted near base of optic support (but outside chamber), during multiple taps.



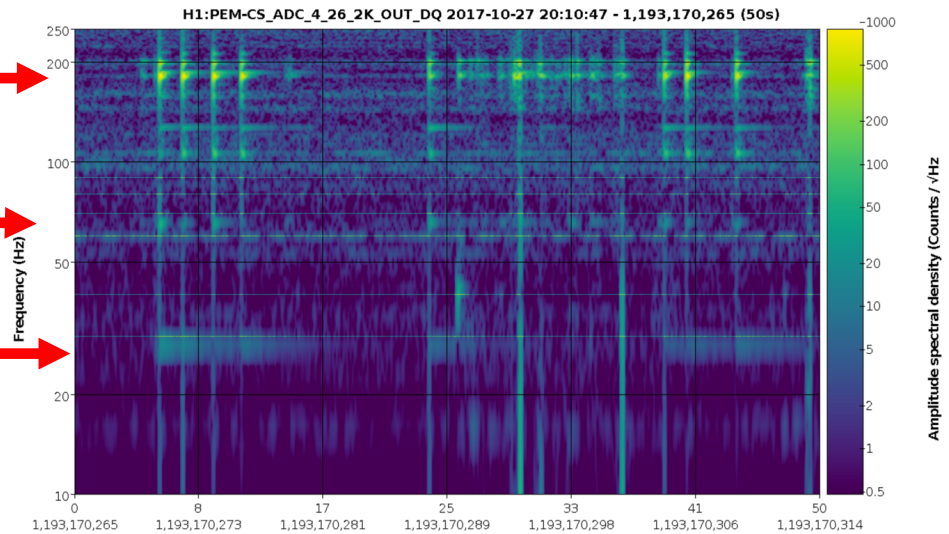
Fs=2,048Hz, sec/fft = 0.50, overlap = 0.98, fft length=1,024, #-FFT = 4829, bw = 2, in samples = 102K, low = 0.20

During temporary damping. Some resonances don't ring for as long, indicating damping.

Somewhat damped →

Somewhat damped →

Not damped →



Fs=2,048Hz, sec/fft = 0.50, overlap = 0.98, fft length=1,024, #-FFT = 4829, bw = 2, in samples = 102K, low = 0.20