

T1800243-v1

ALIGO

24 May 2018

LHO IO Alignment on the PSL:

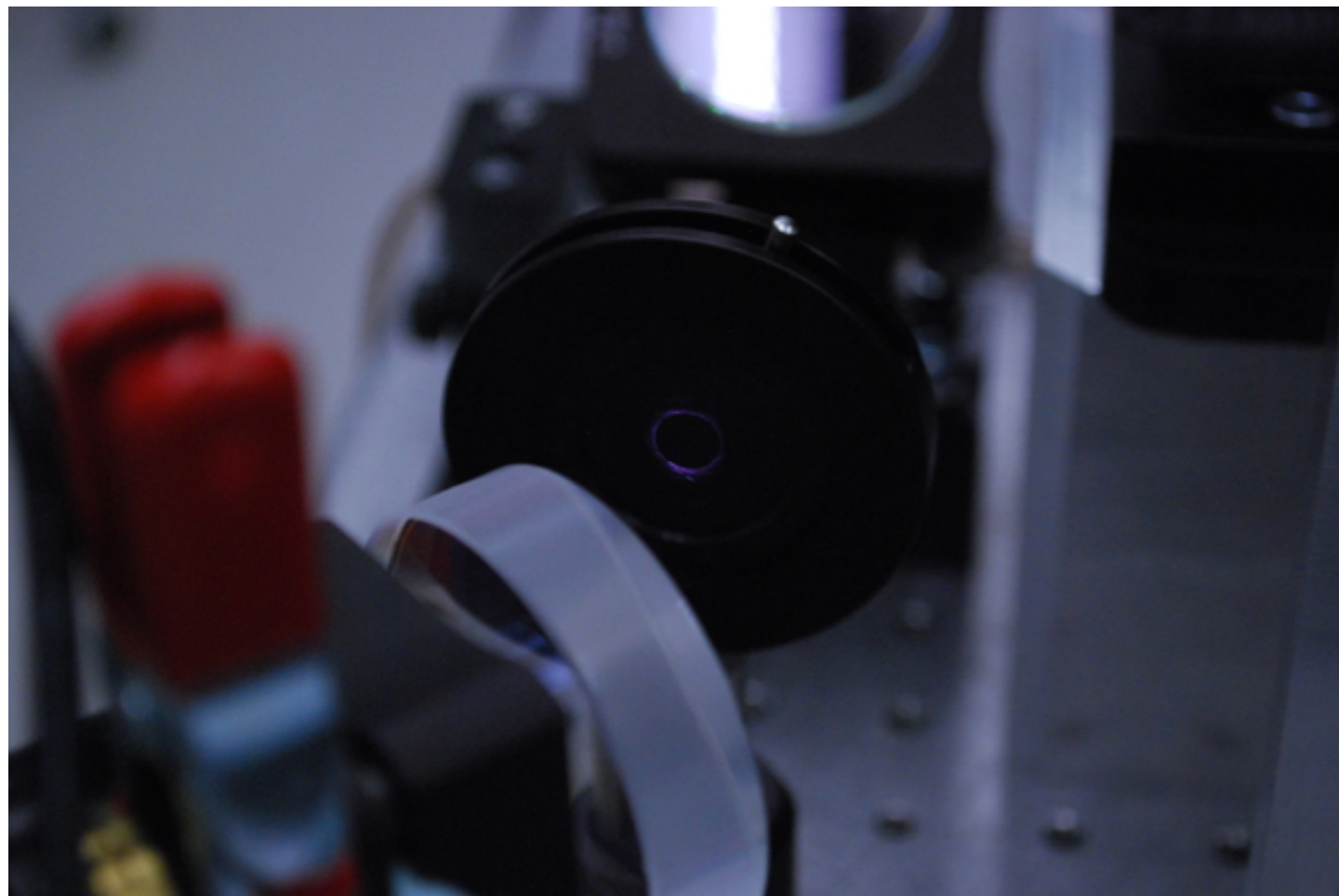
fiucials and current alignment as of 23 May 2018

Cheryl Vorvick

24 May 2018

Alignment into the IMC:

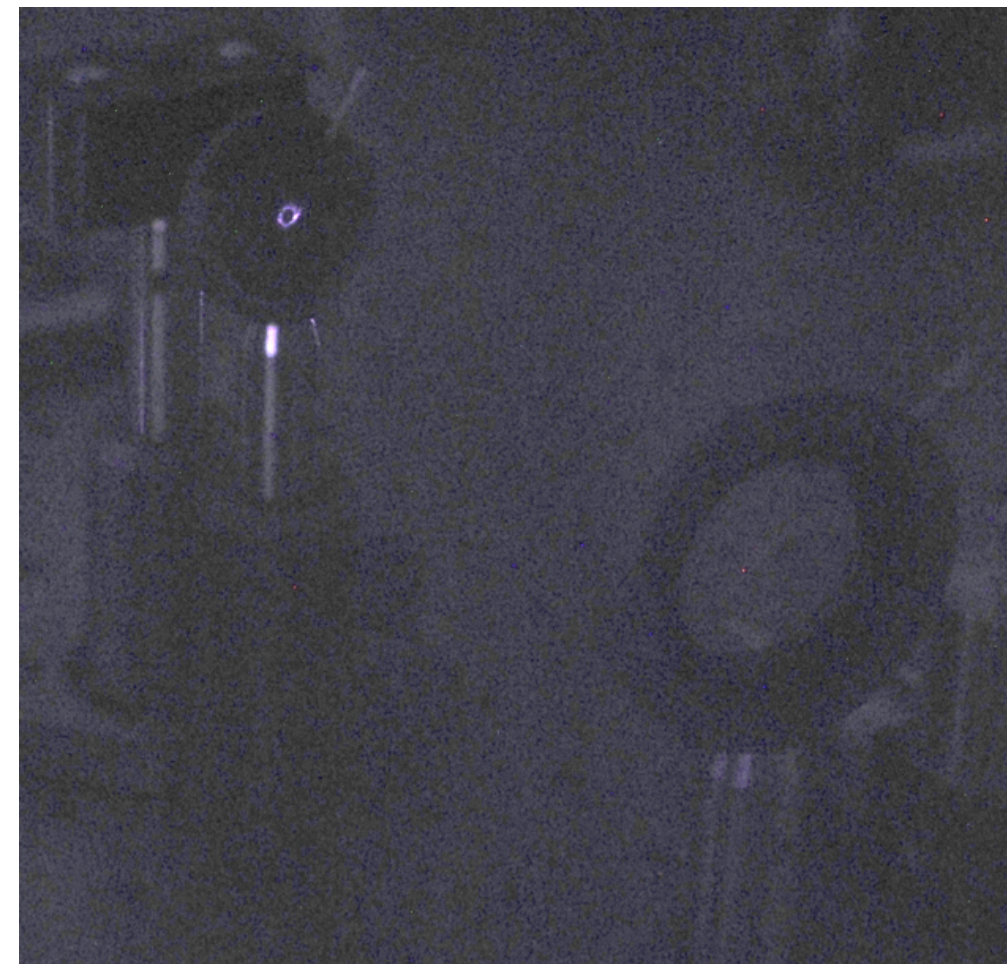
Iris in front of the bottom periscope mirror:



Bottom periscope mirror
IO_AB_M5

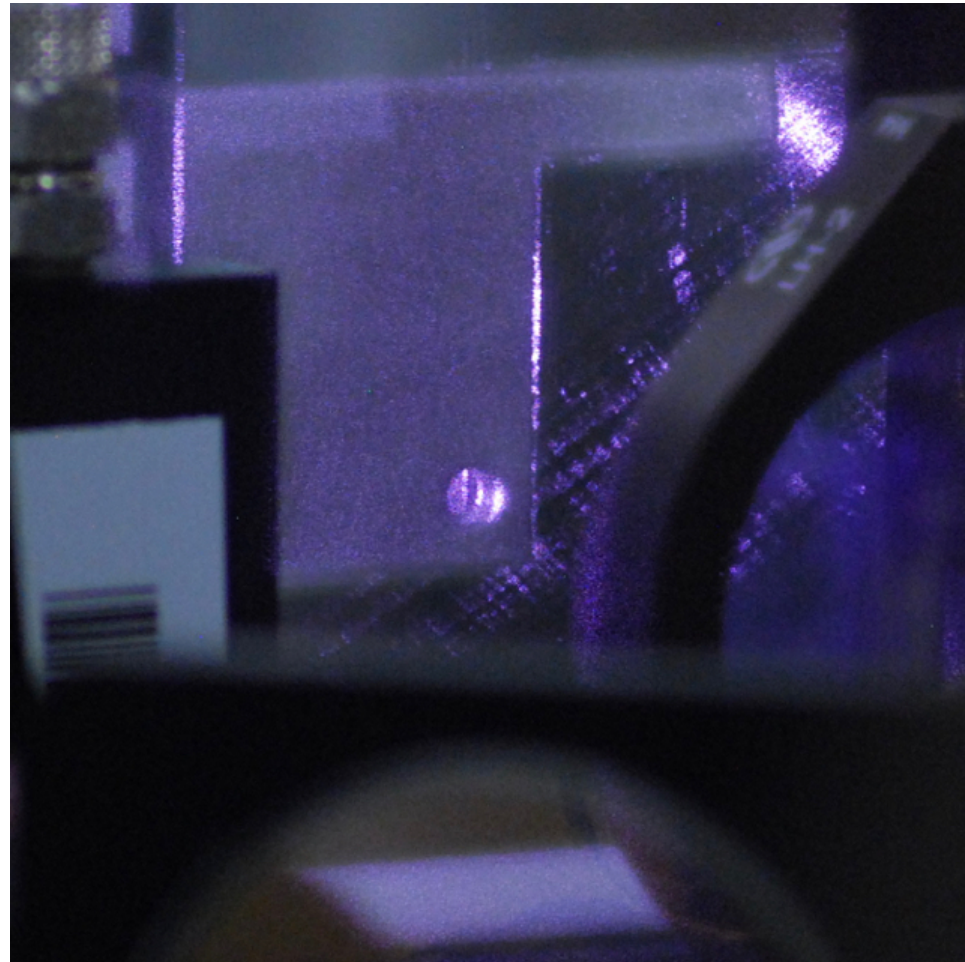


Second iris after IO_AB_BS1

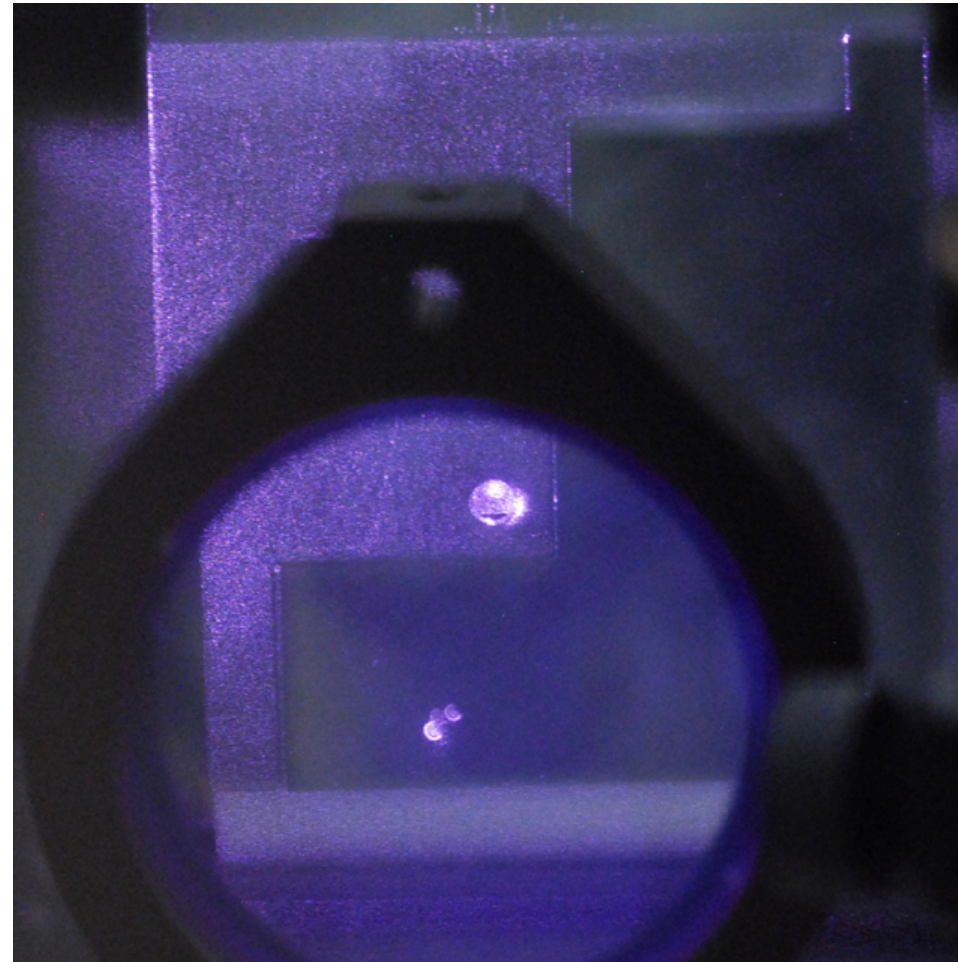


EOM output aperture: clipping*

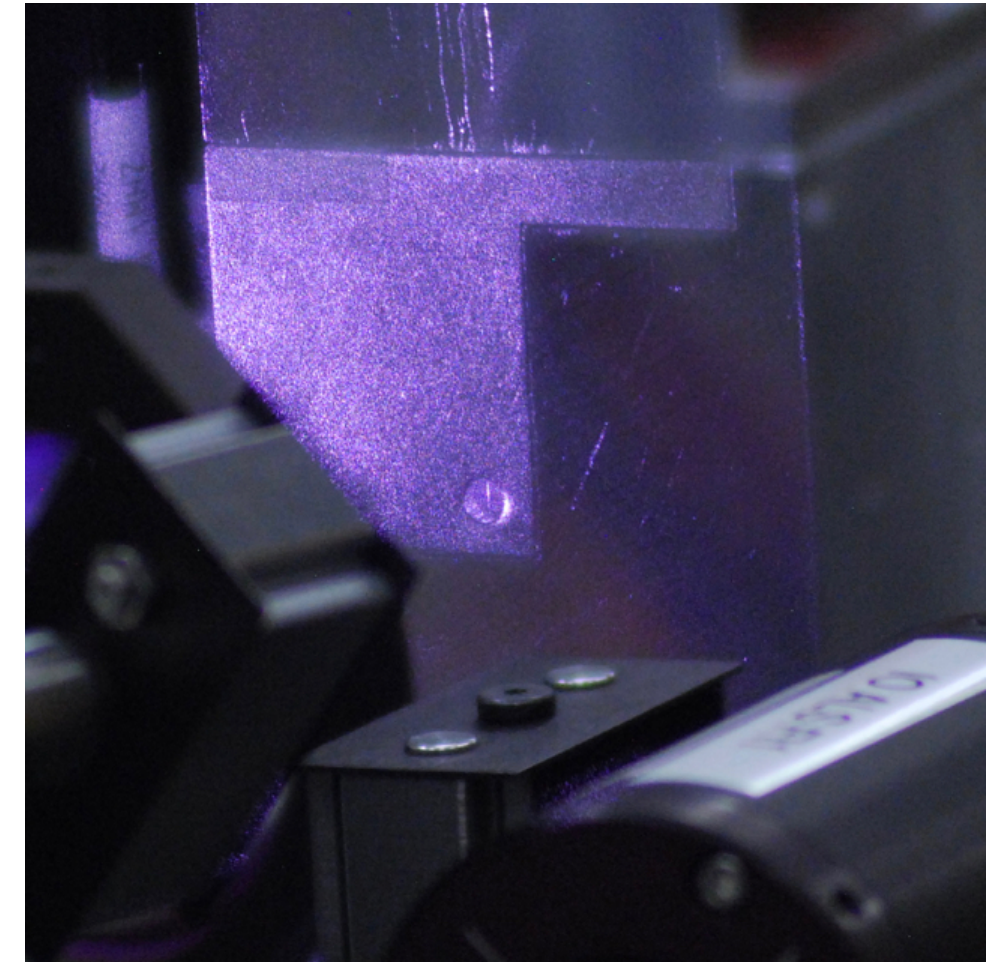
from the $-Y$ side of the PSL table



from the $+X$ side of the PSL table



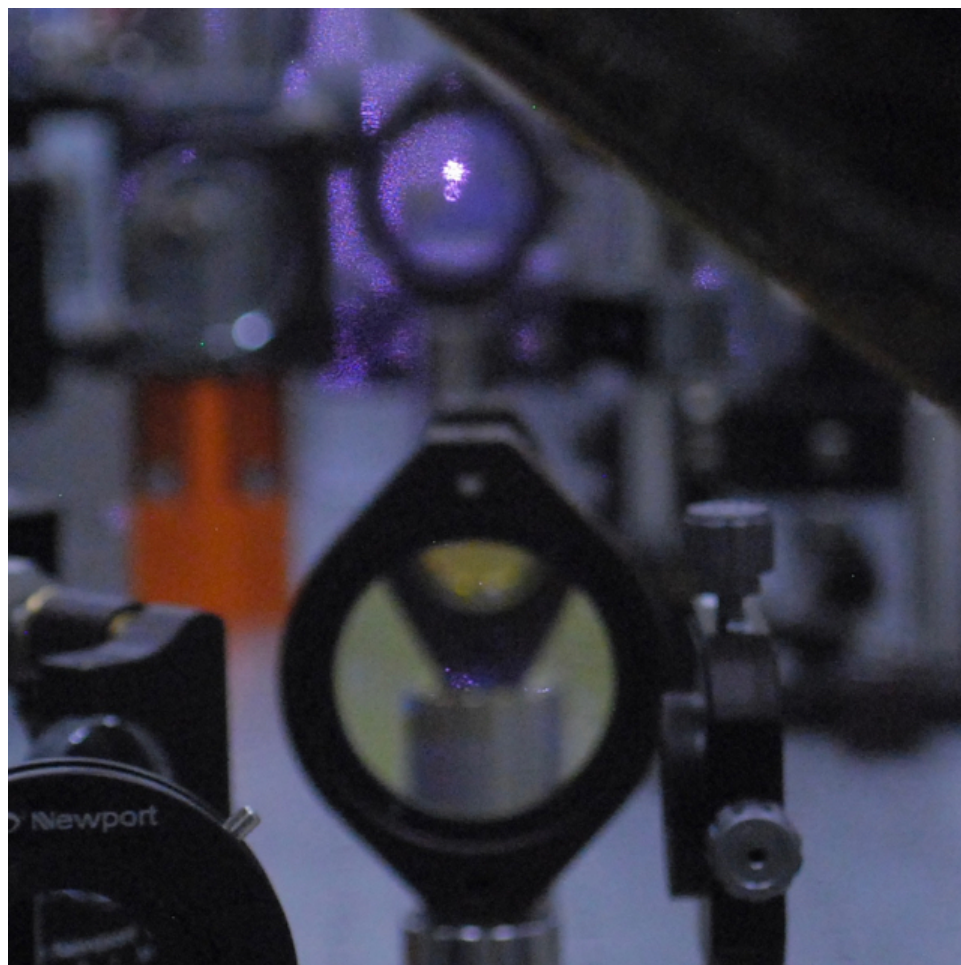
from the $+Y$ side of the PSL table



*beam seen clipping on the $+Y$ side of the aperture is the 2nd reflection from IO_MB_L1

IO_MB_L2: from the +X side of the PSL table

Showing the beam from the EOM



Close up showing the beam mis-centered

