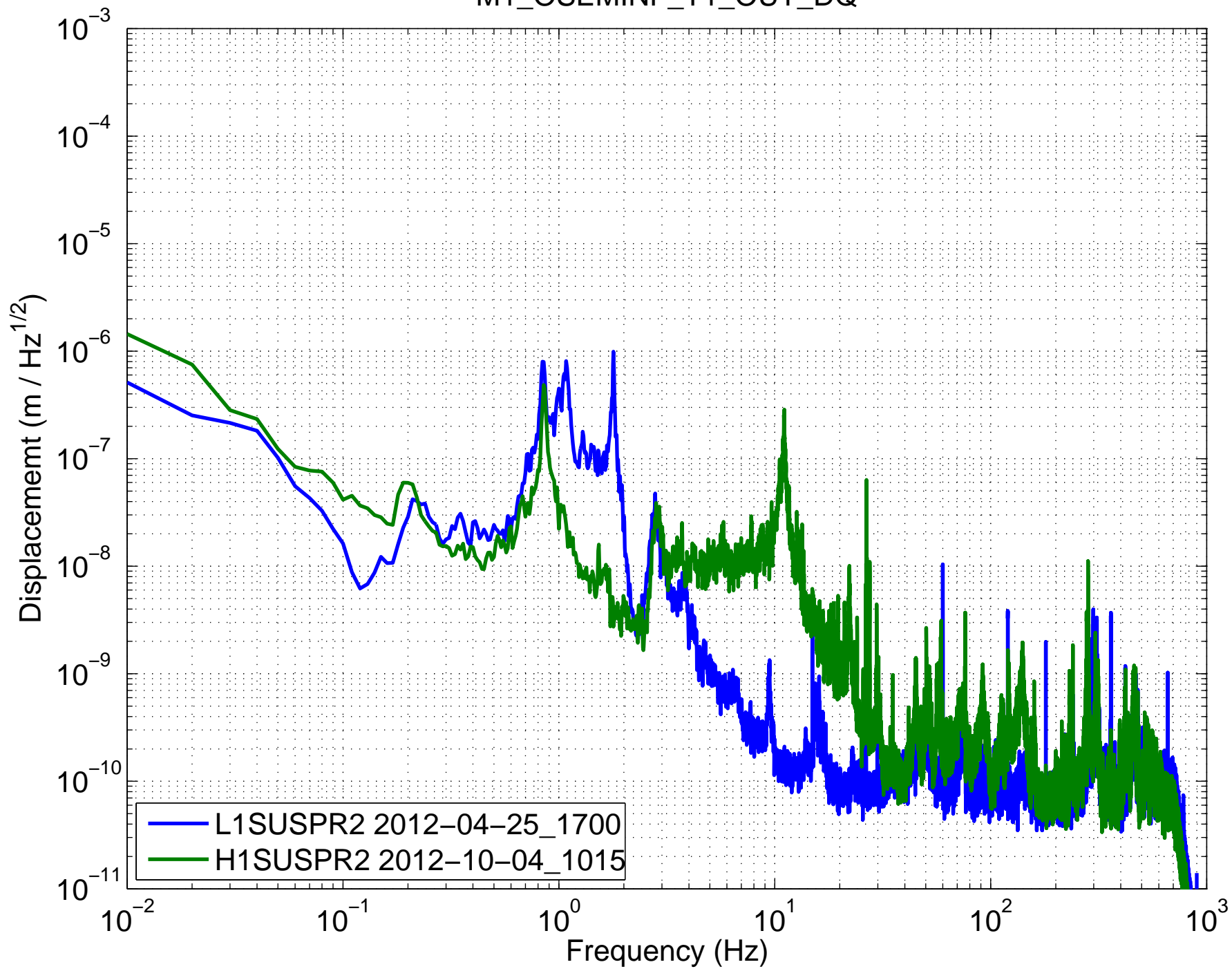
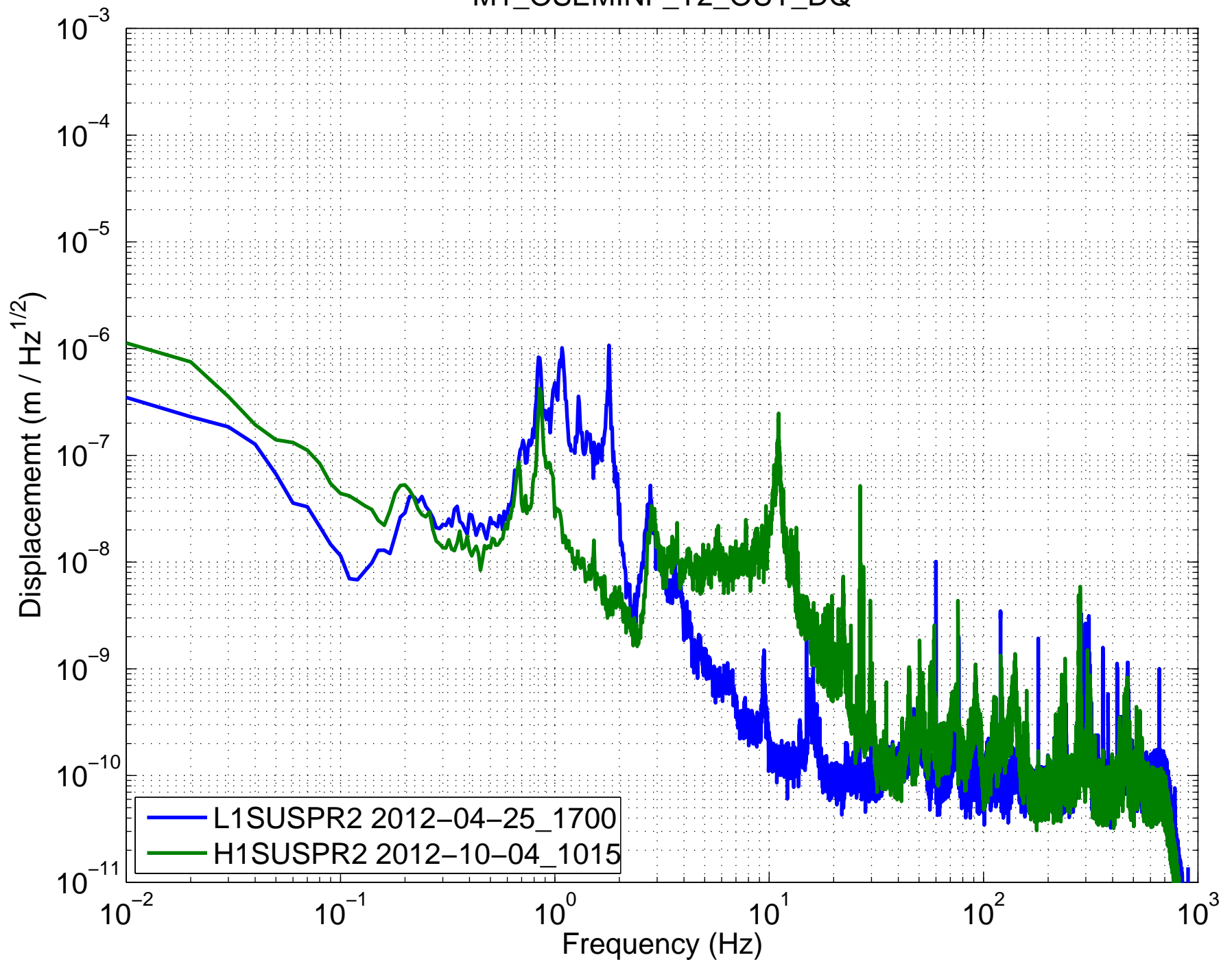


(HSTS) Amplitude Spectral Density – Damping ON

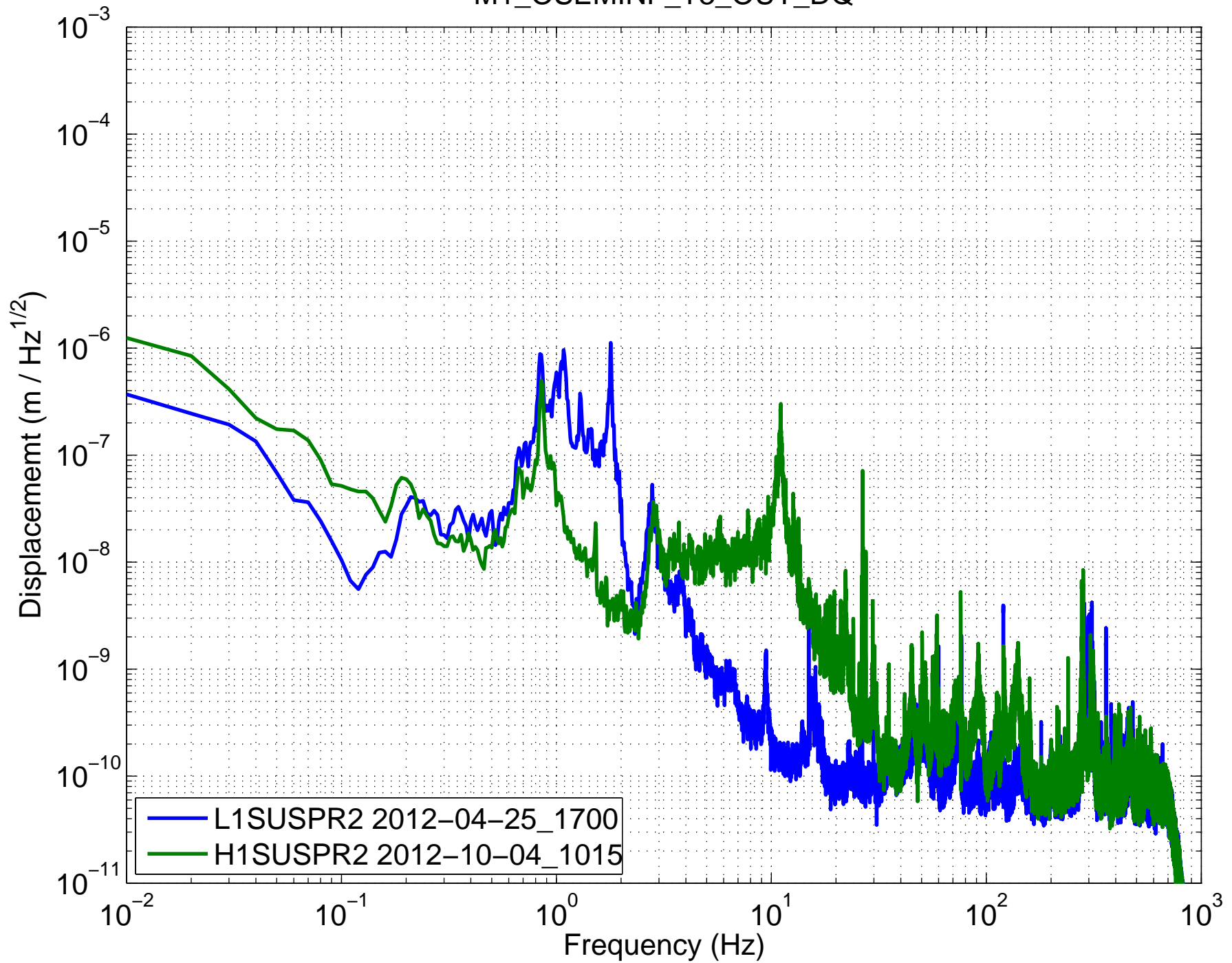
M1_OSEMINF_T1_OUT_DQ



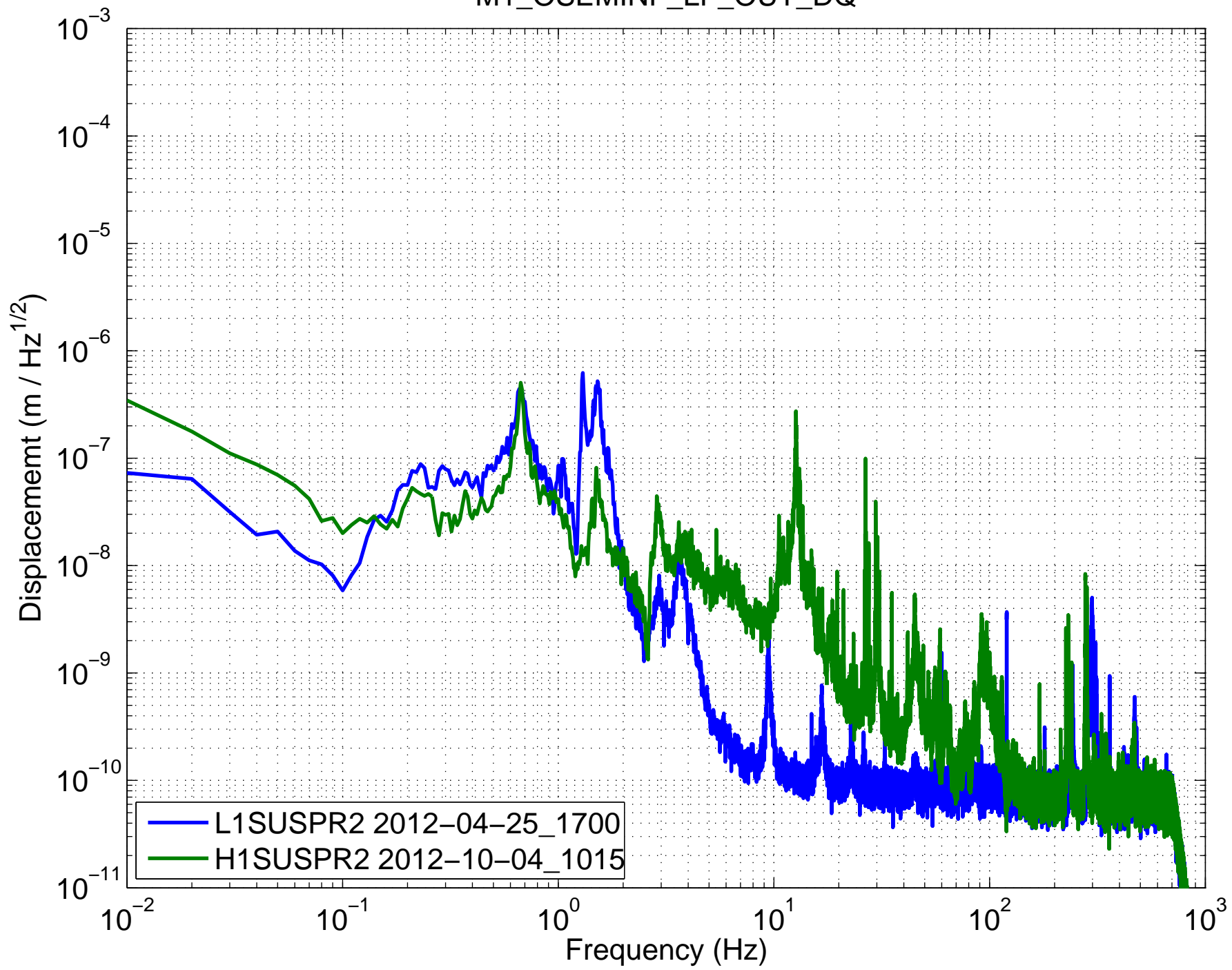
(HSTS) Amplitude Spectral Density – Damping ON
M1_OSEMINF_T2_OUT_DQ



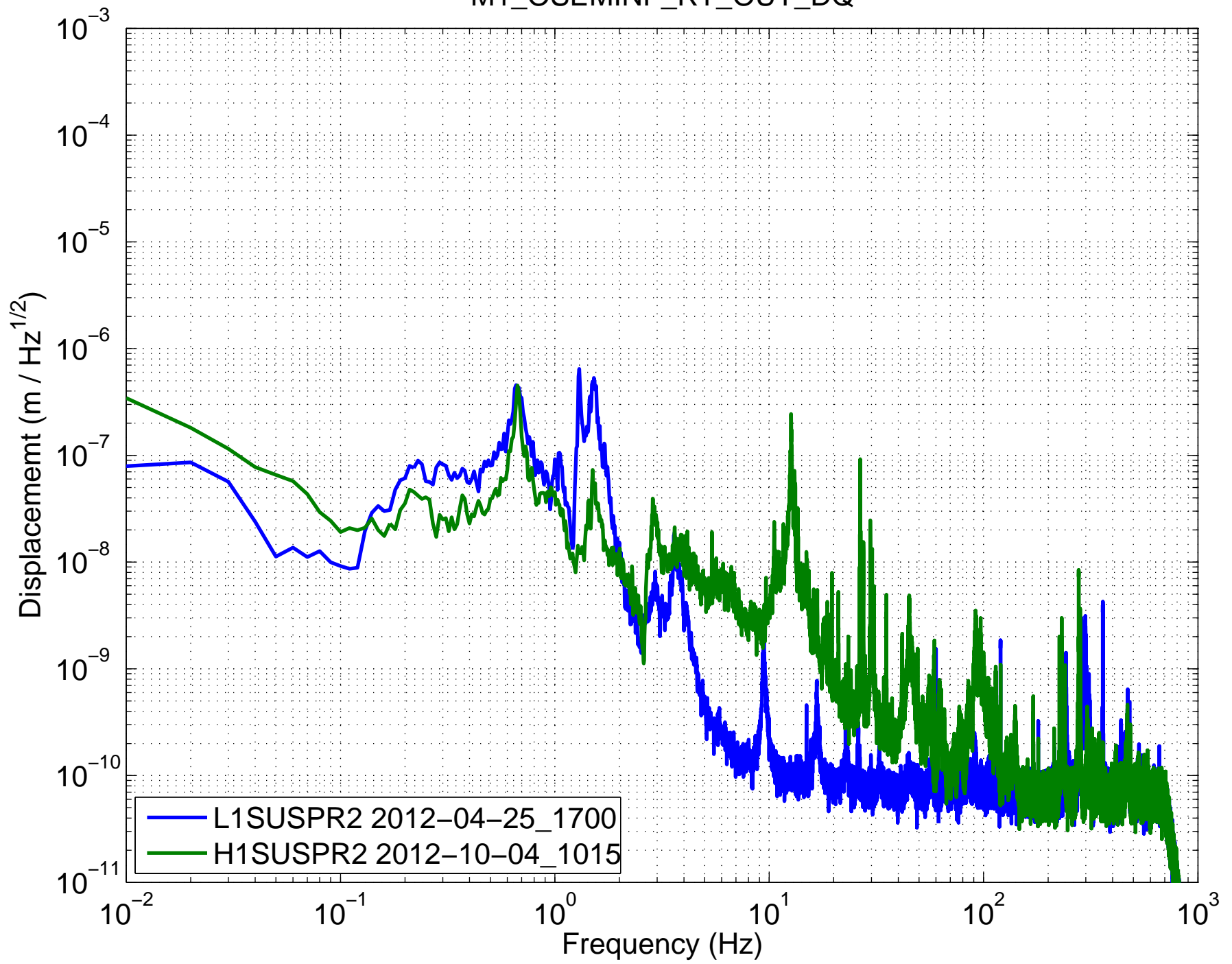
(HSTS) Amplitude Spectral Density – Damping ON
M1_OSEMINF_T3_OUT_DQ



(HSTS) Amplitude Spectral Density – Damping ON
M1_OSEMINF_LF_OUT_DQ

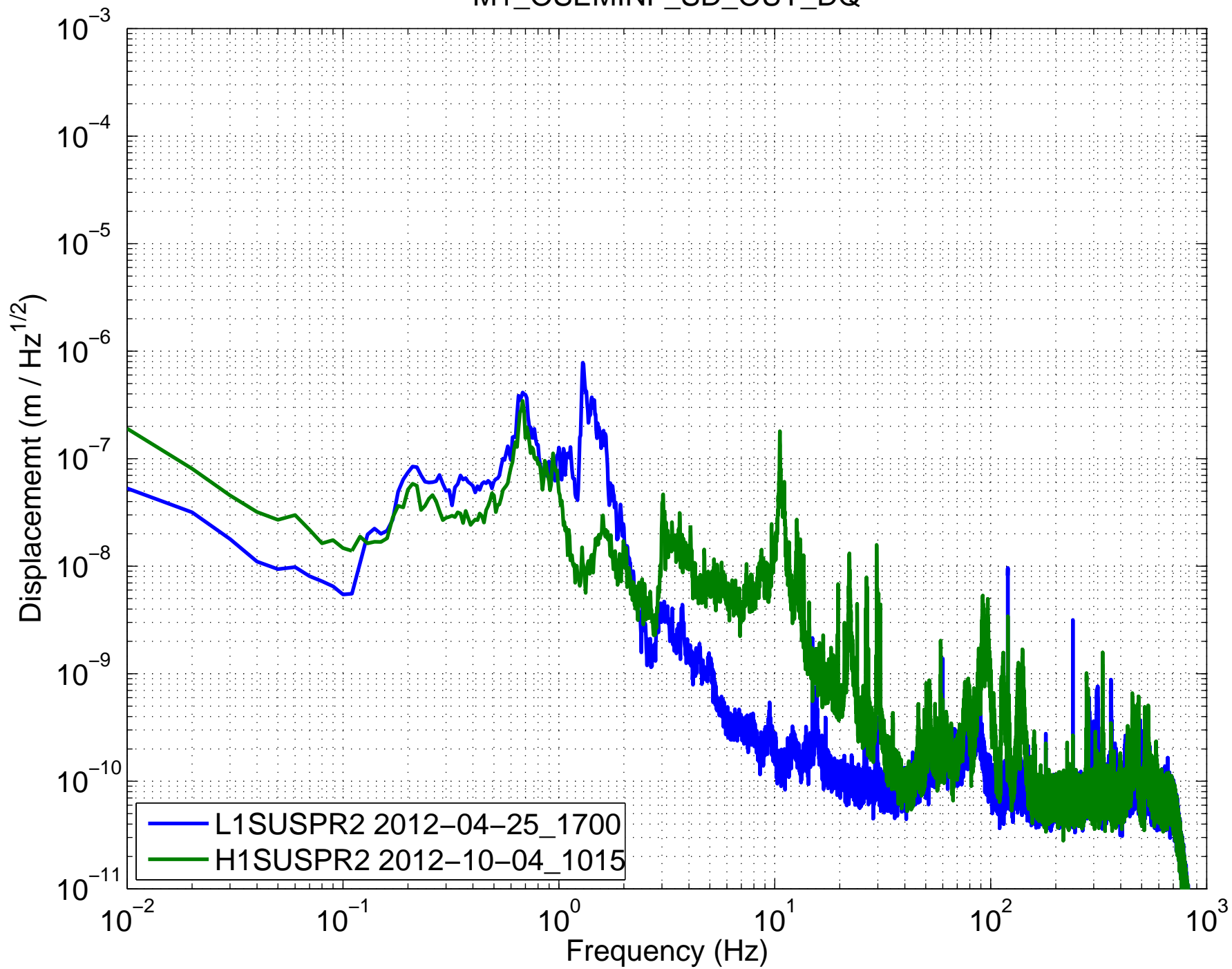


(HSTS) Amplitude Spectral Density – Damping ON
M1_OSEMINF_RT_OUT_DQ



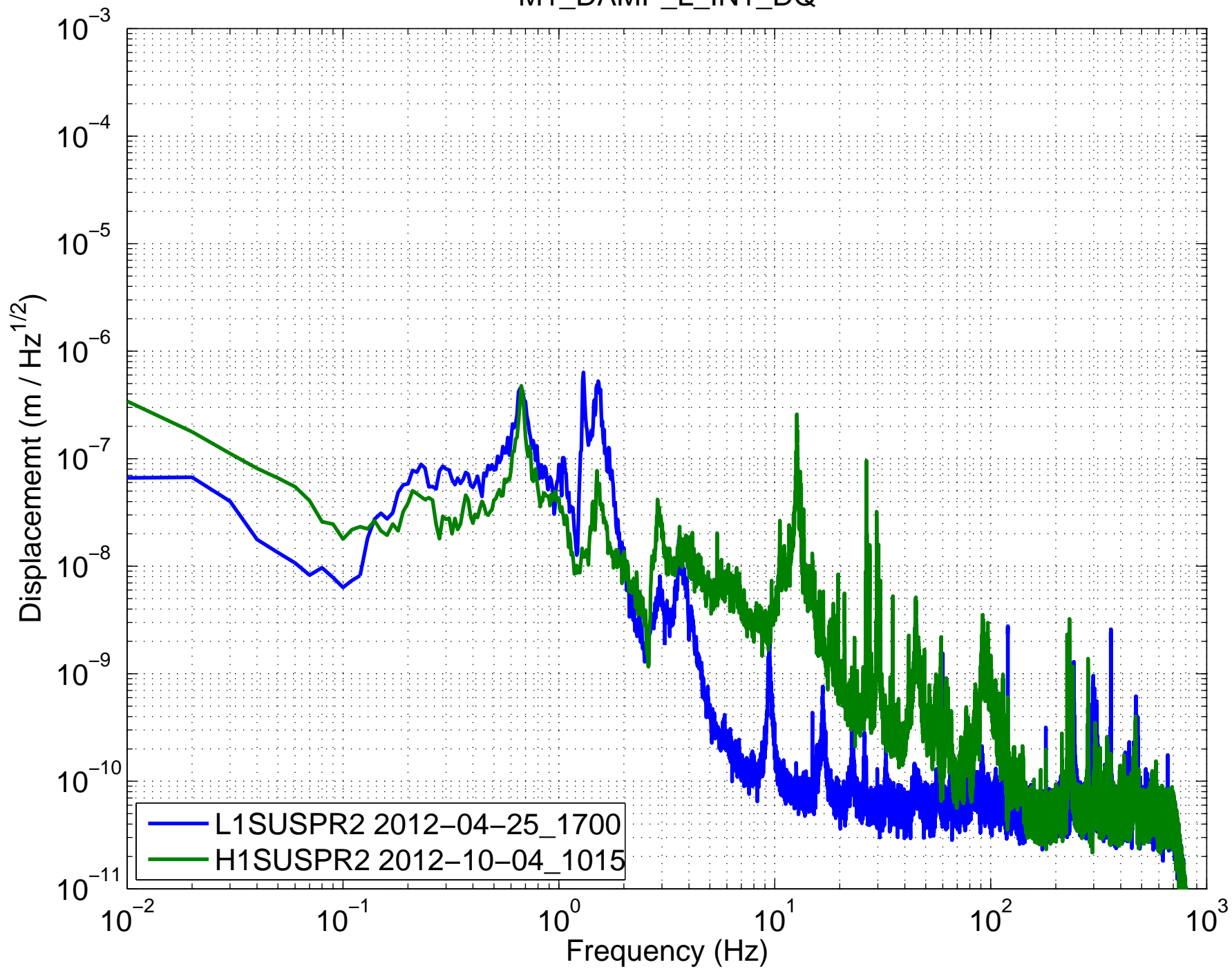
(HSTS) Amplitude Spectral Density – Damping ON

M1_OSEMINF_SD_OUT_DQ



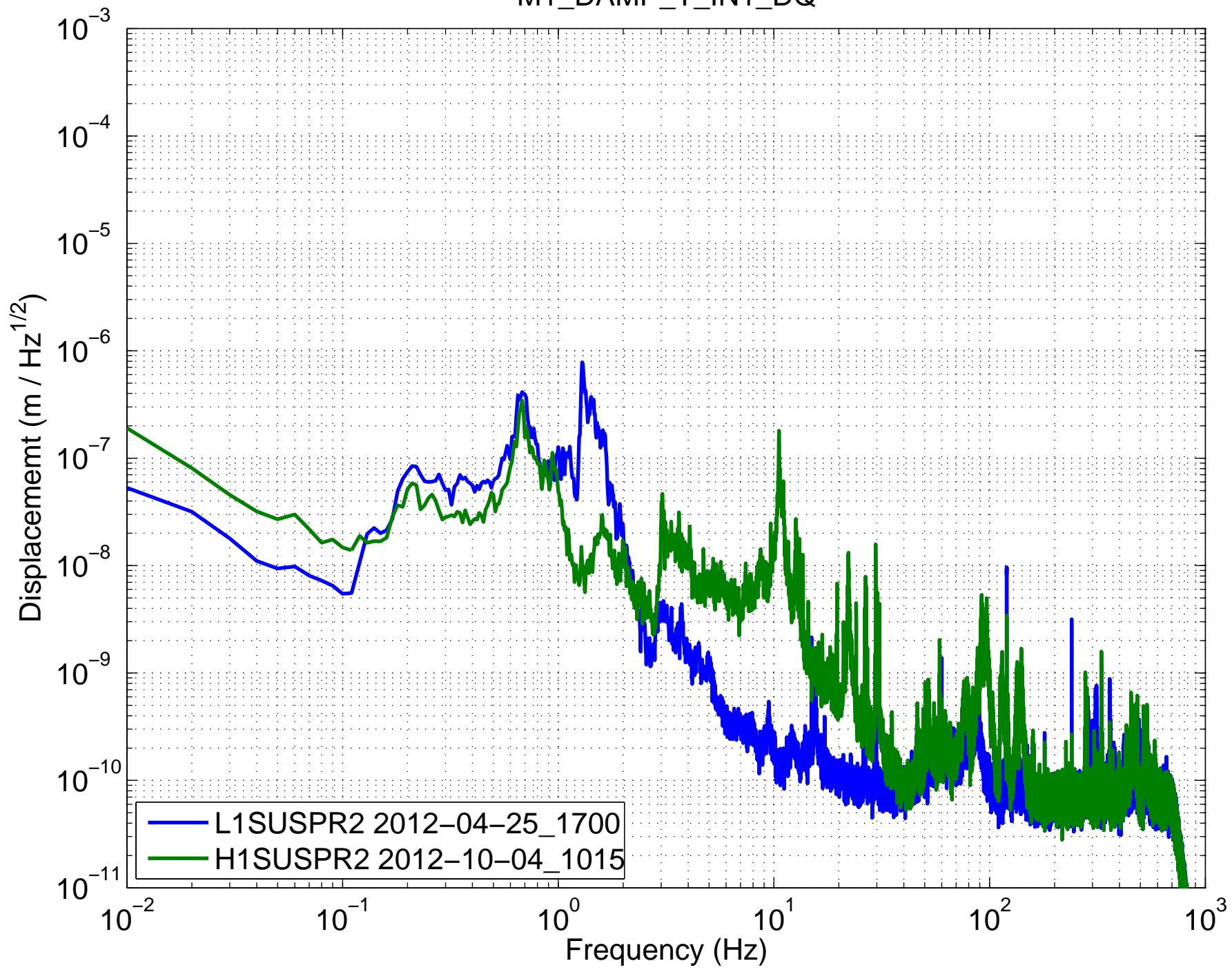
(HSTS) Amplitude Spectral Density – Damping ON

M1_DAMP_L_IN1_DQ



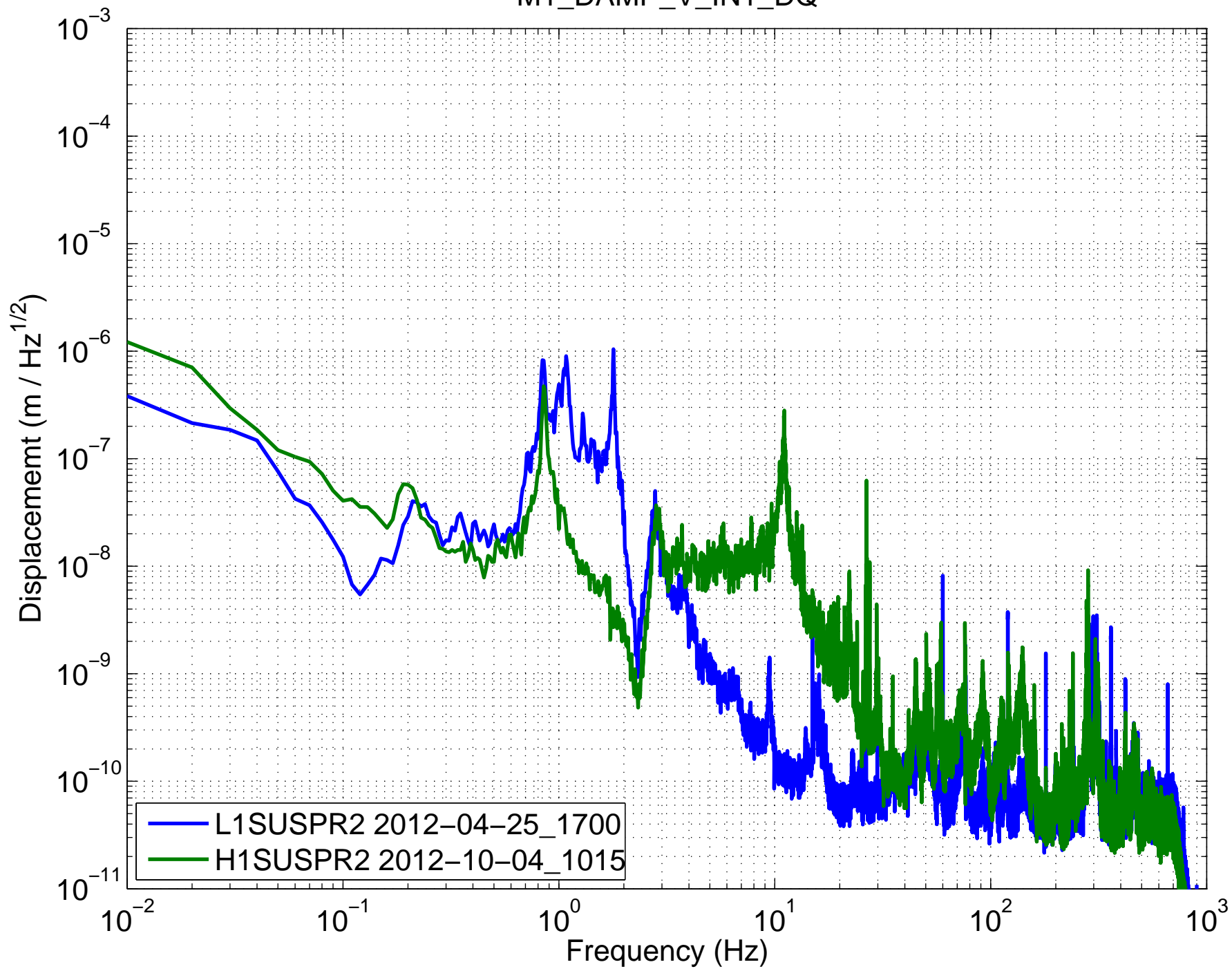
(HSTS) Amplitude Spectral Density – Damping ON

M1_DAMP_T_IN1_DQ



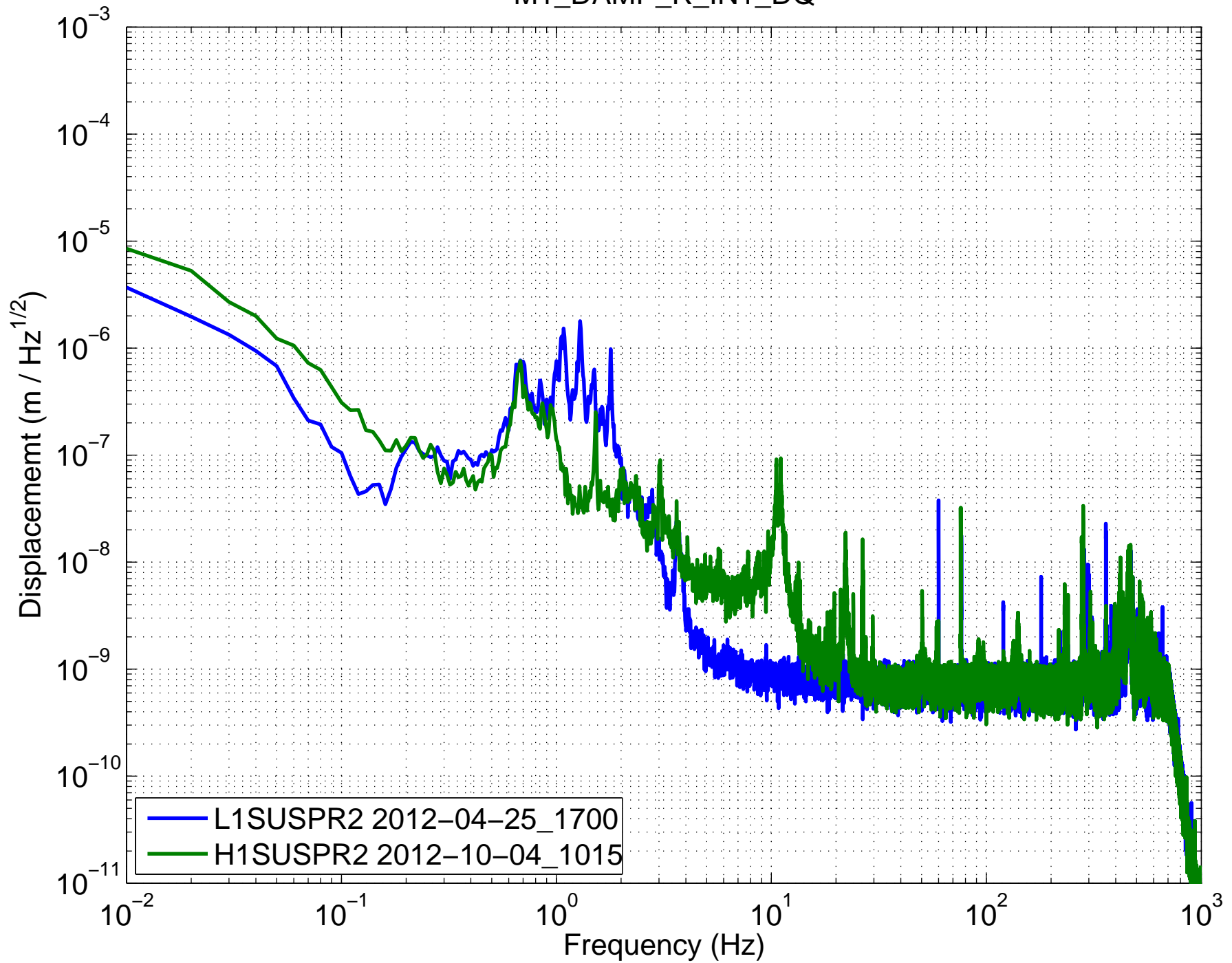
(HSTS) Amplitude Spectral Density – Damping ON

M1_DAMP_V_IN1_DQ



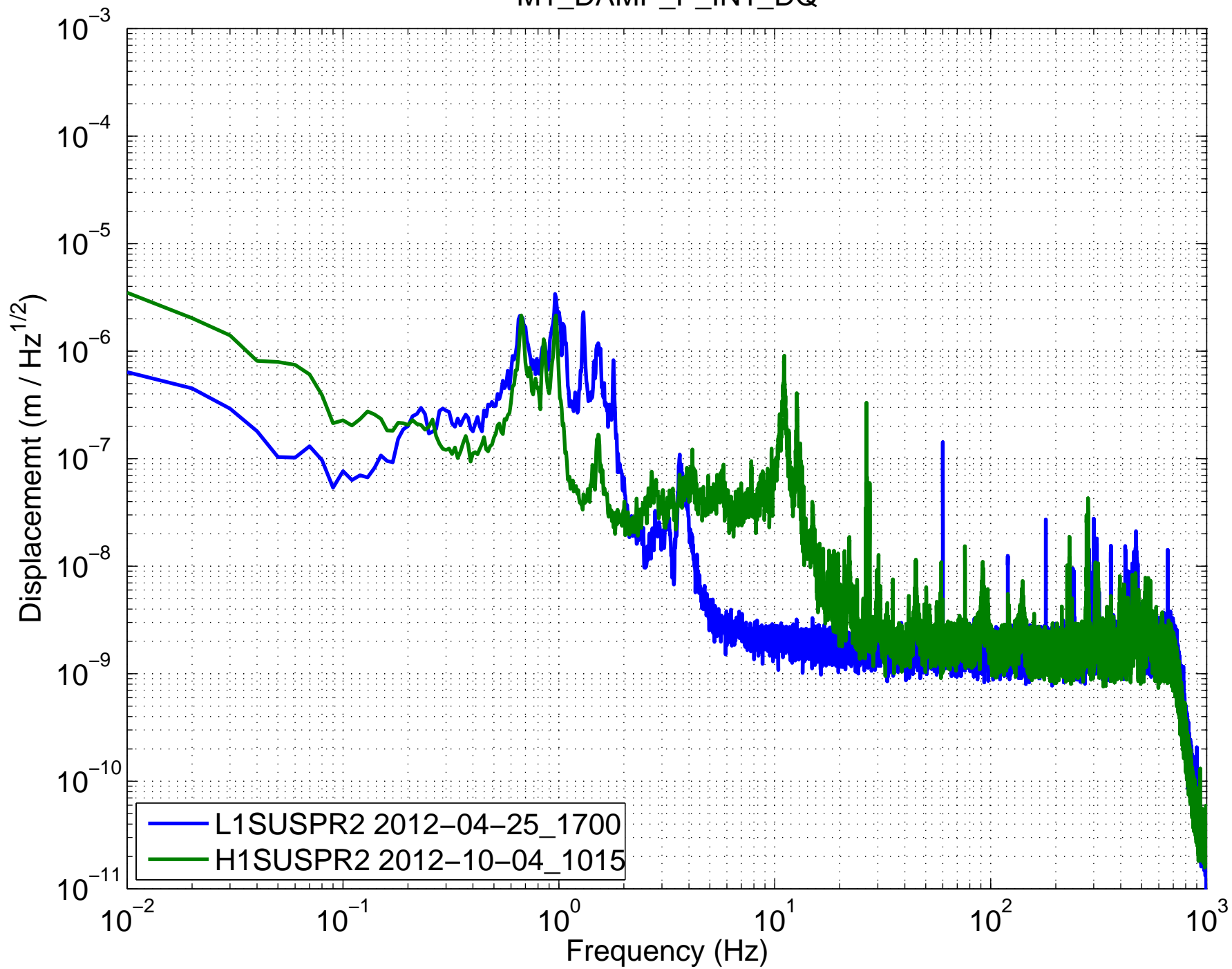
(HSTS) Amplitude Spectral Density – Damping ON

M1_DAMP_R_IN1_DQ

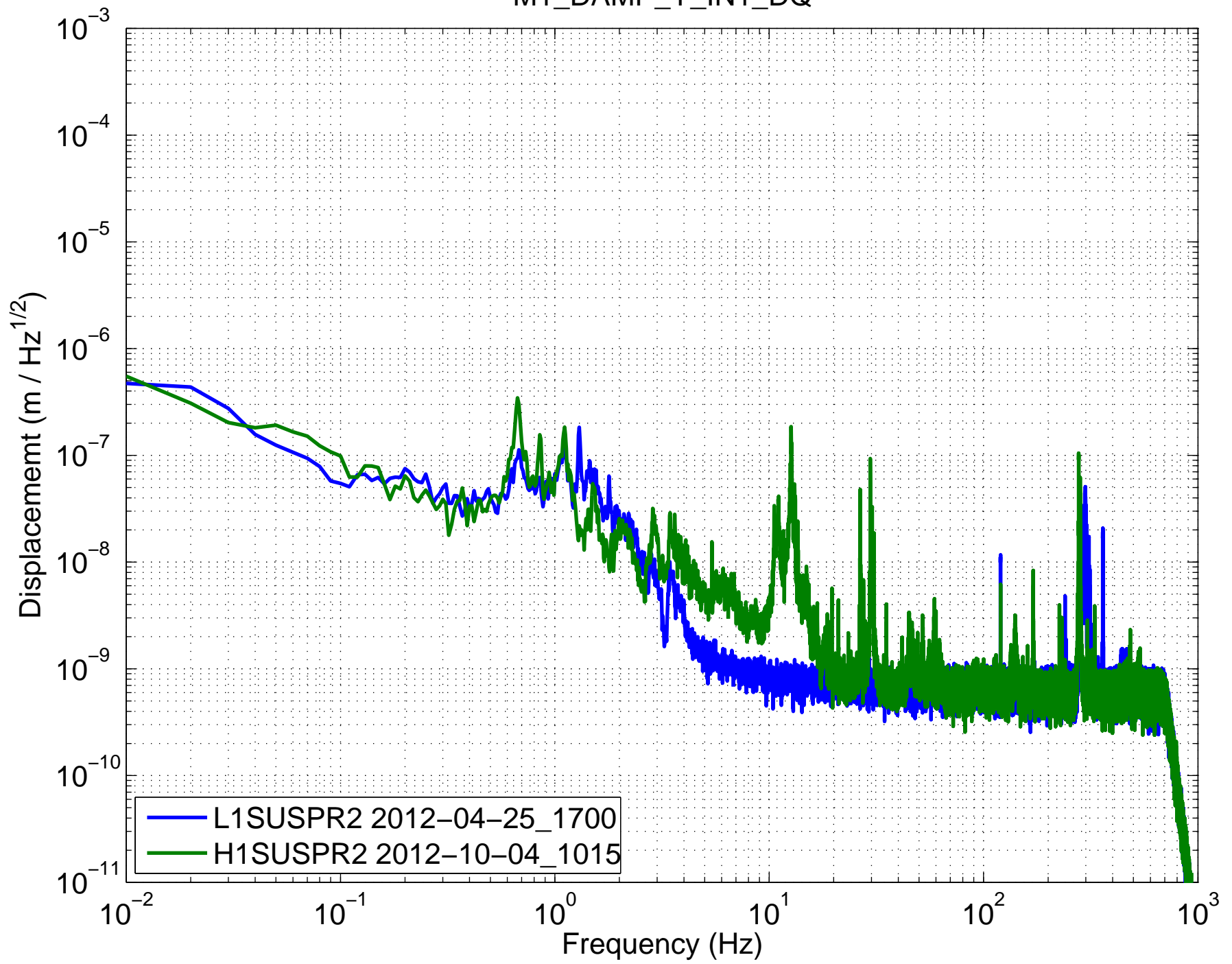


(HSTS) Amplitude Spectral Density – Damping ON

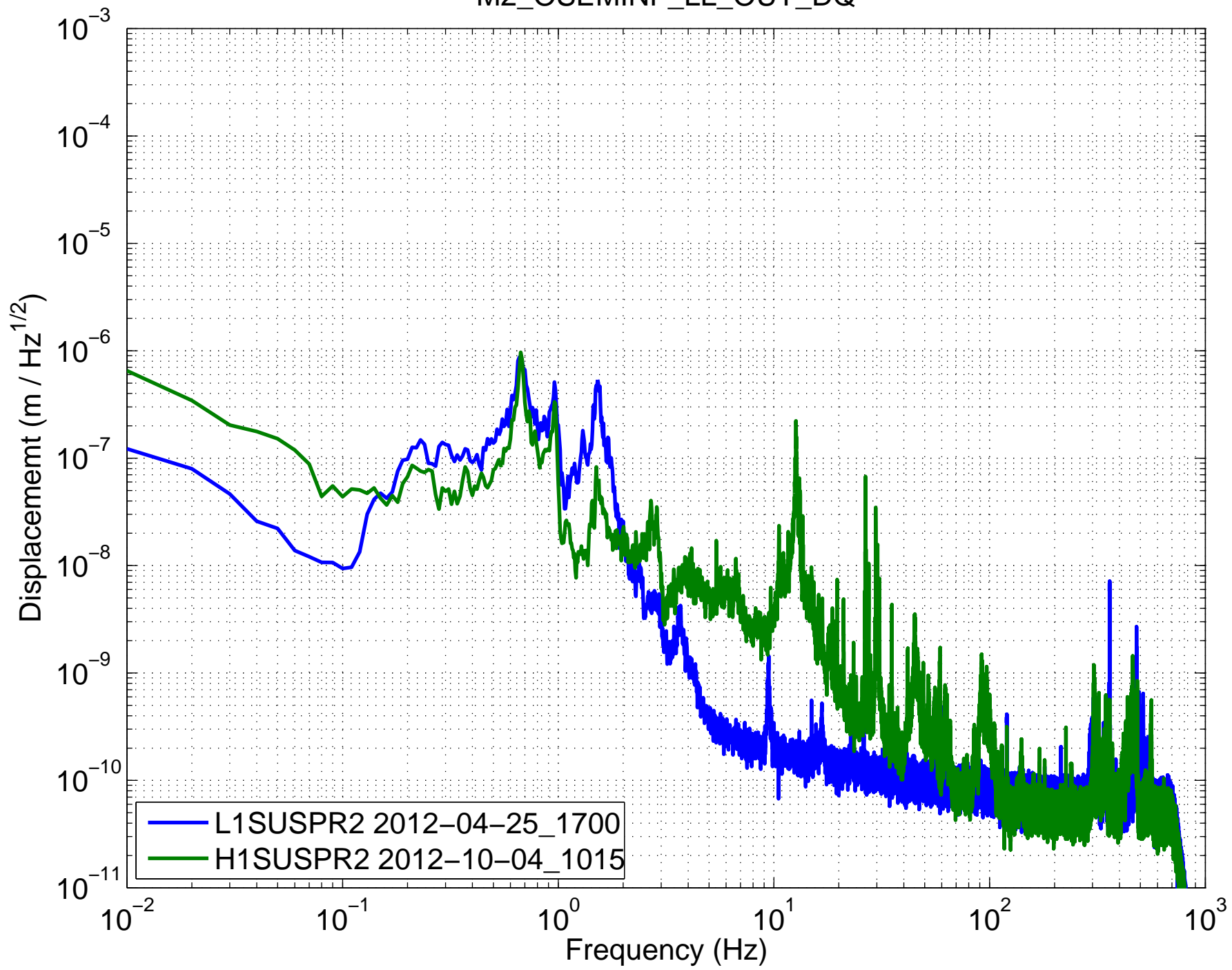
M1_DAMP_P_IN1_DQ



(HSTS) Amplitude Spectral Density – Damping ON
M1_DAMP_Y_IN1_DQ

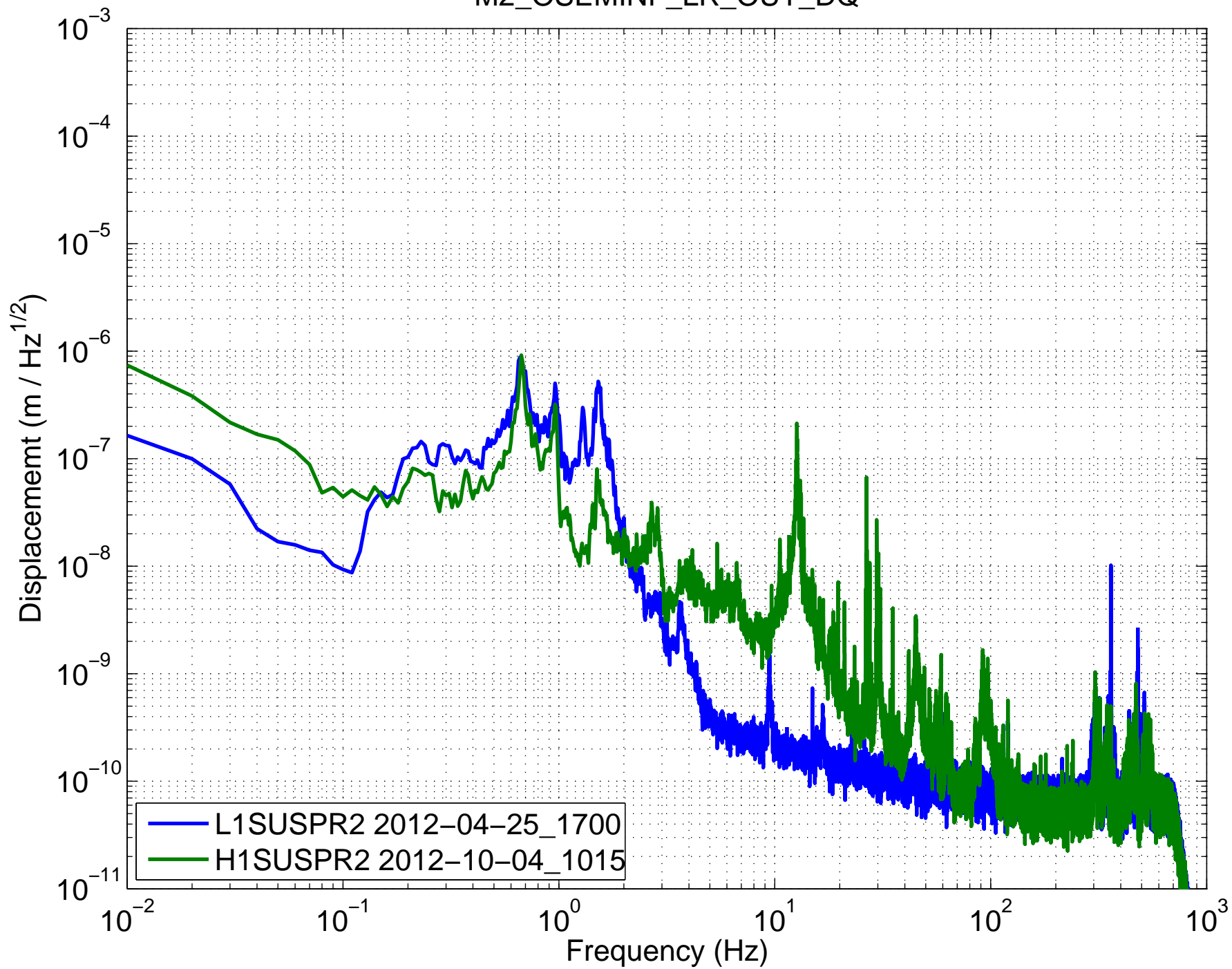


(HSTS) Amplitude Spectral Density – Damping ON
M2_OSEMINF_LL_OUT_DQ



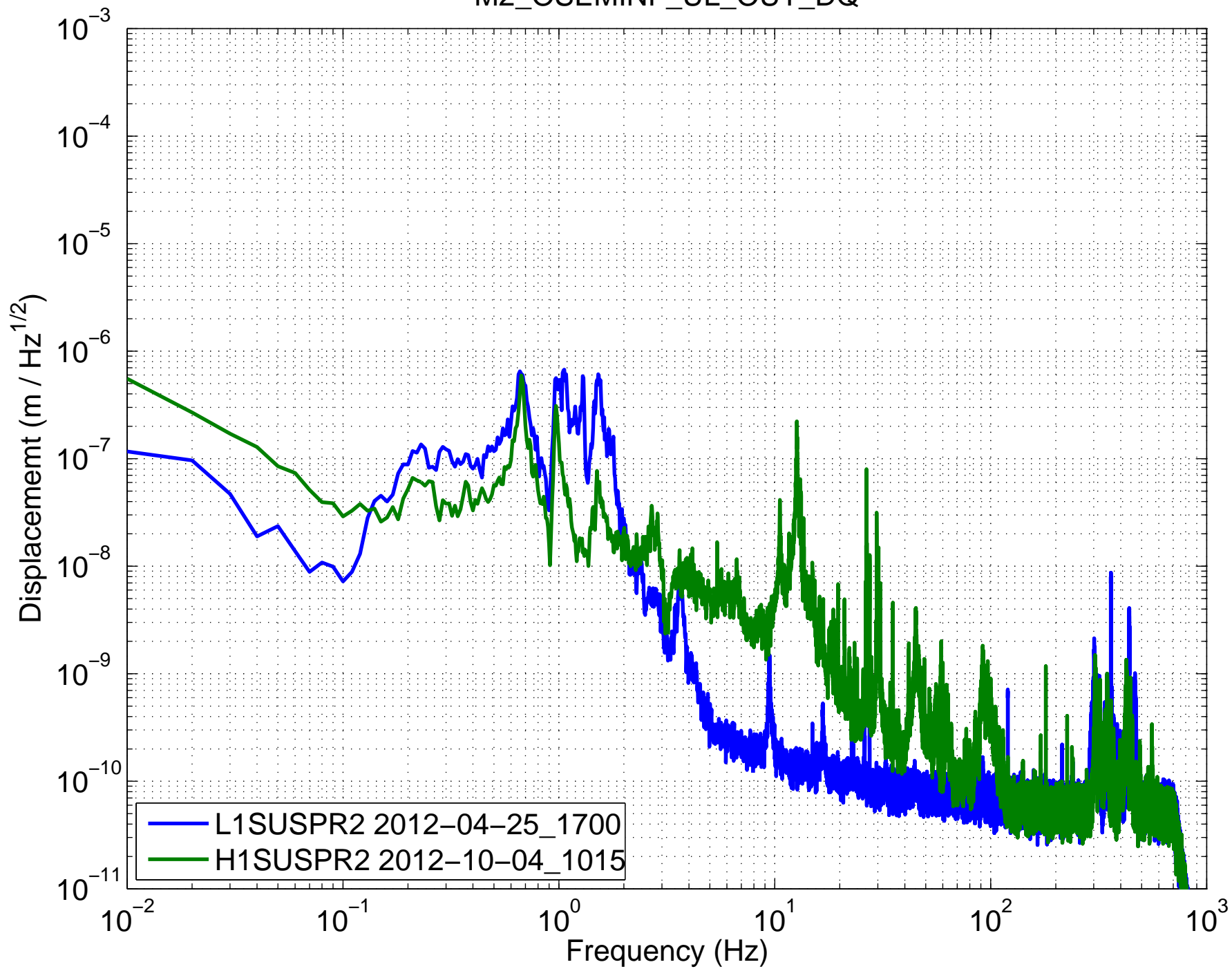
(HSTS) Amplitude Spectral Density – Damping ON

M2_OSEMINF_LR_OUT_DQ



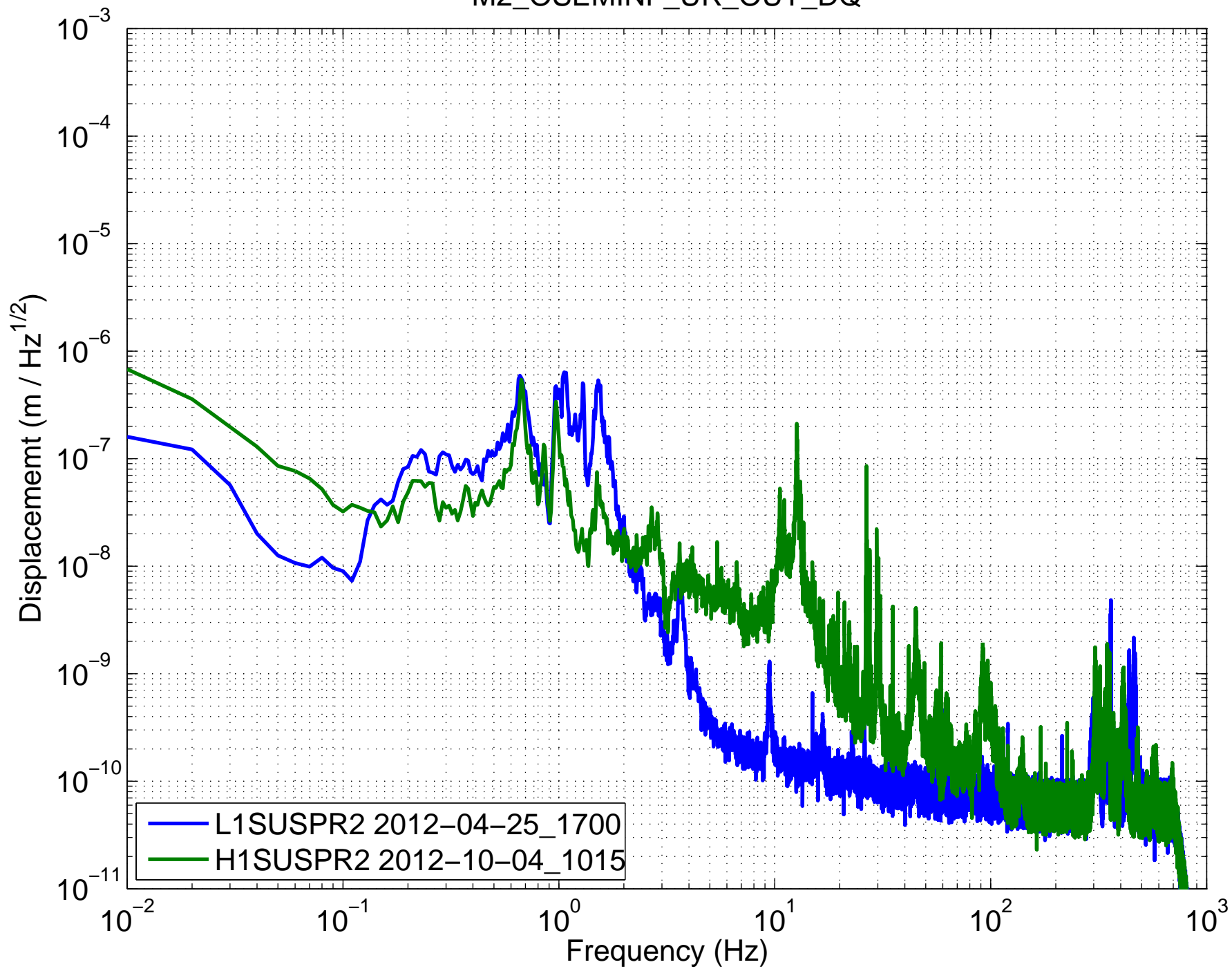
(HSTS) Amplitude Spectral Density – Damping ON

M2_OSEMINF_UL_OUT_DQ

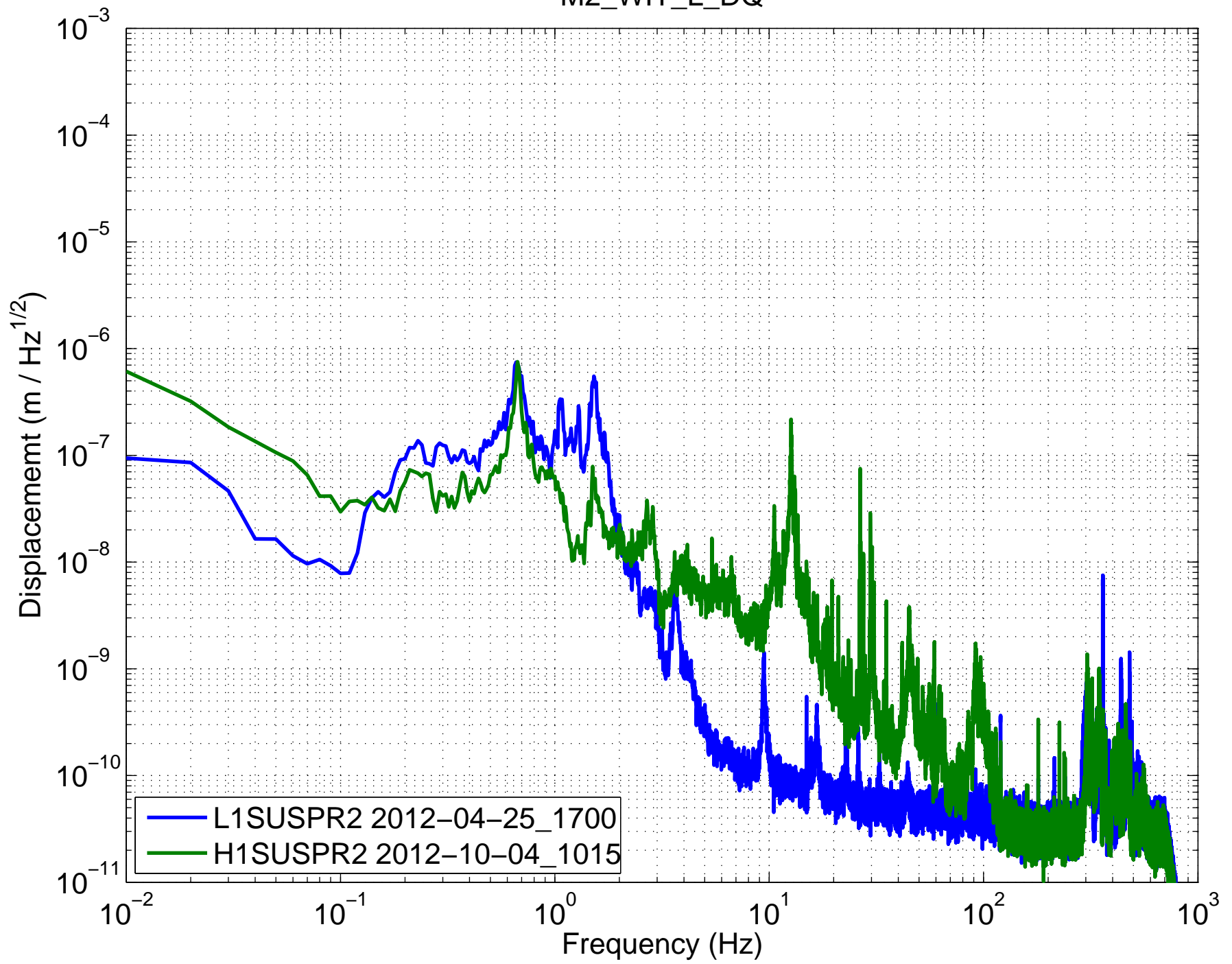


(HSTS) Amplitude Spectral Density – Damping ON

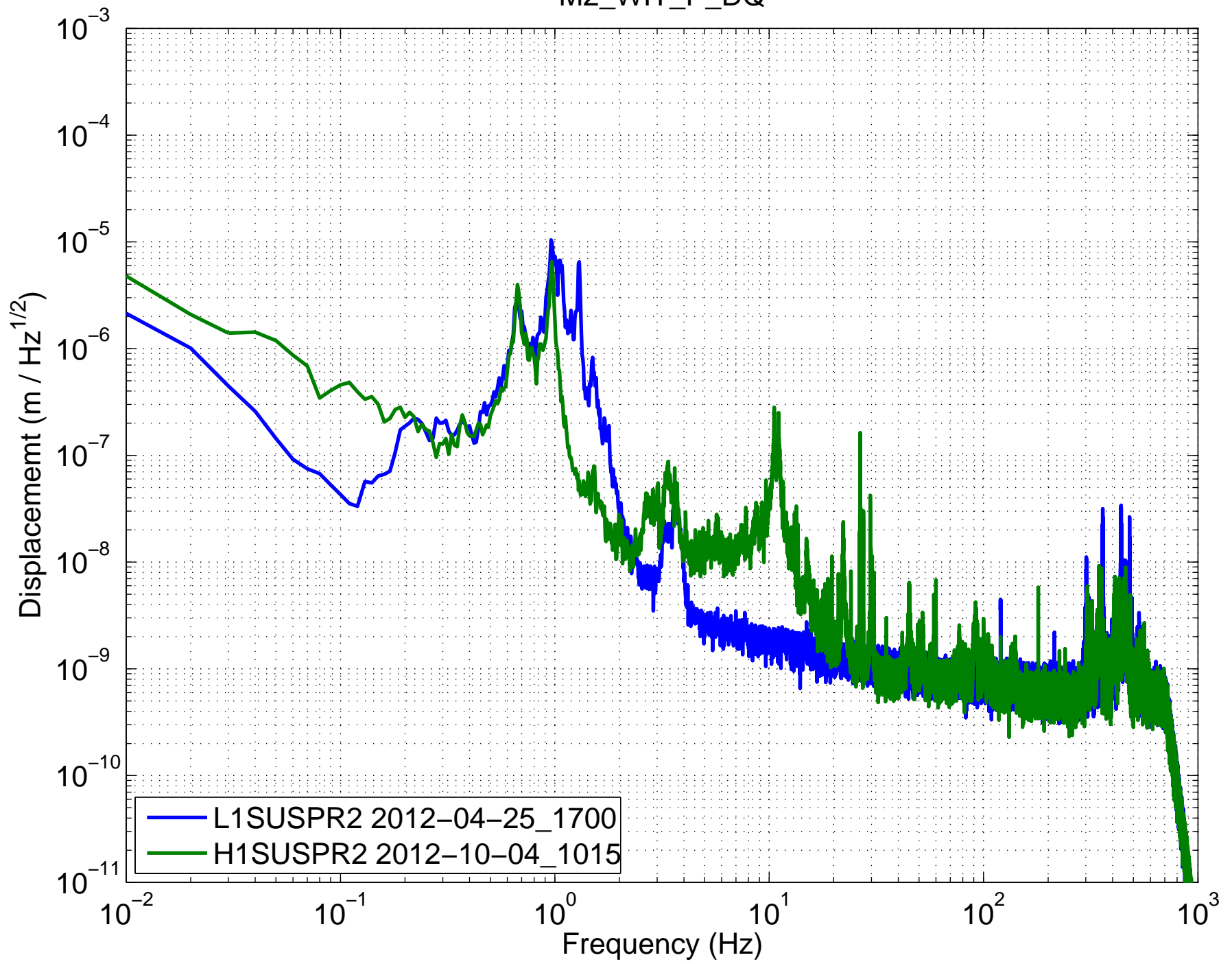
M2_OSEMINF_UR_OUT_DQ



(HSTS) Amplitude Spectral Density – Damping ON
M2_WIT_L_DQ

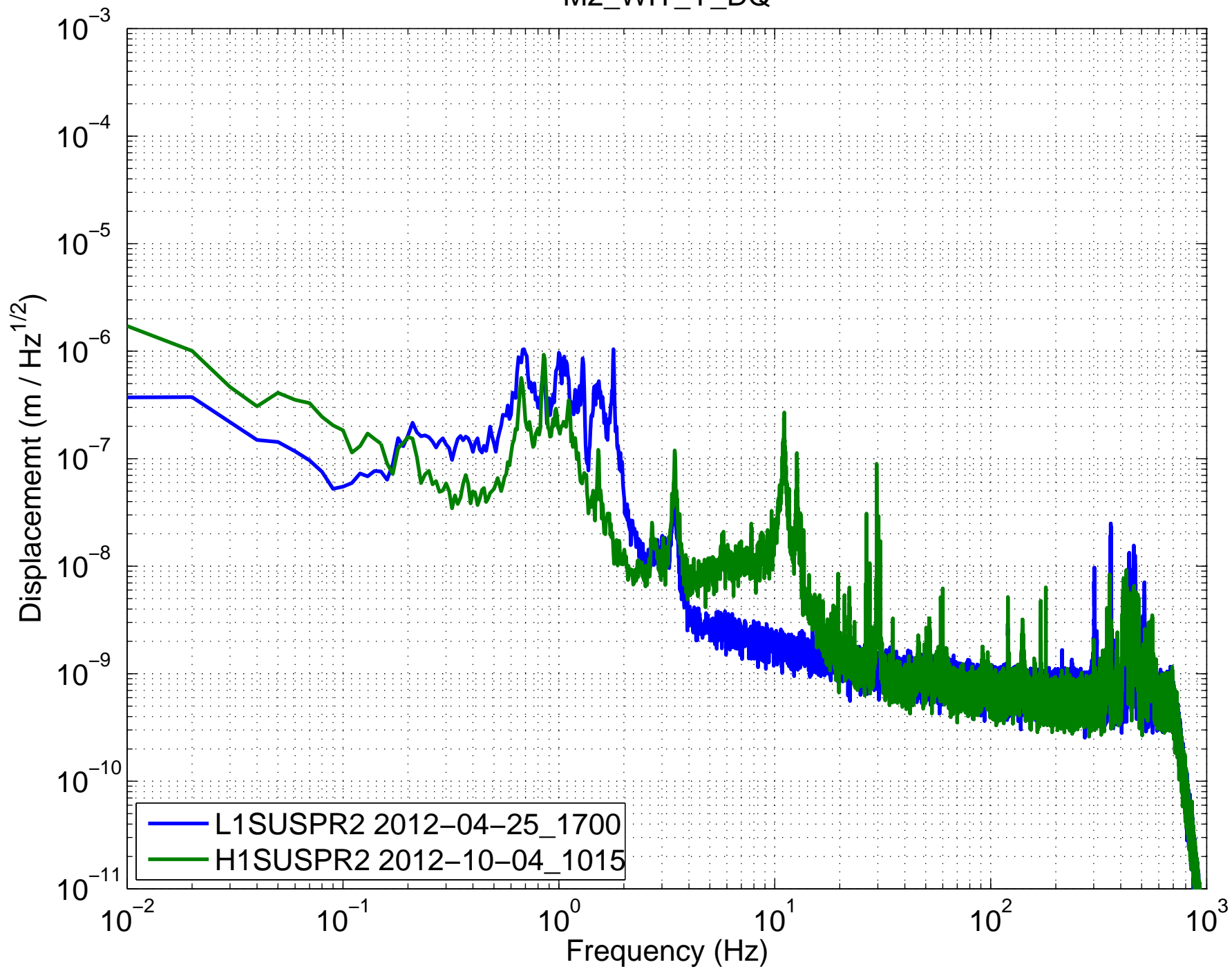


(HSTS) Amplitude Spectral Density – Damping ON
M2_WIT_P_DQ

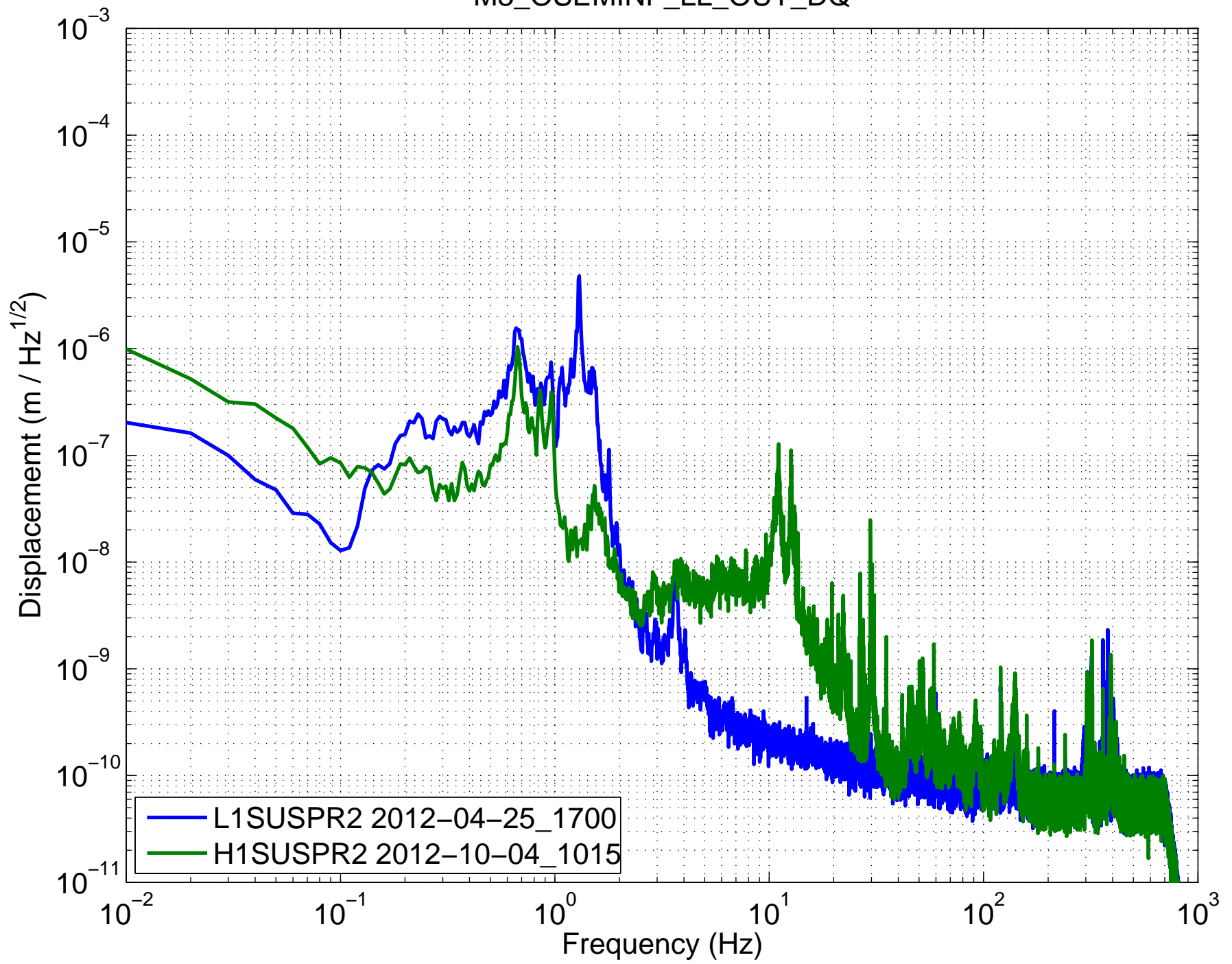


(HSTS) Amplitude Spectral Density – Damping ON

M2_WIT_Y_DQ

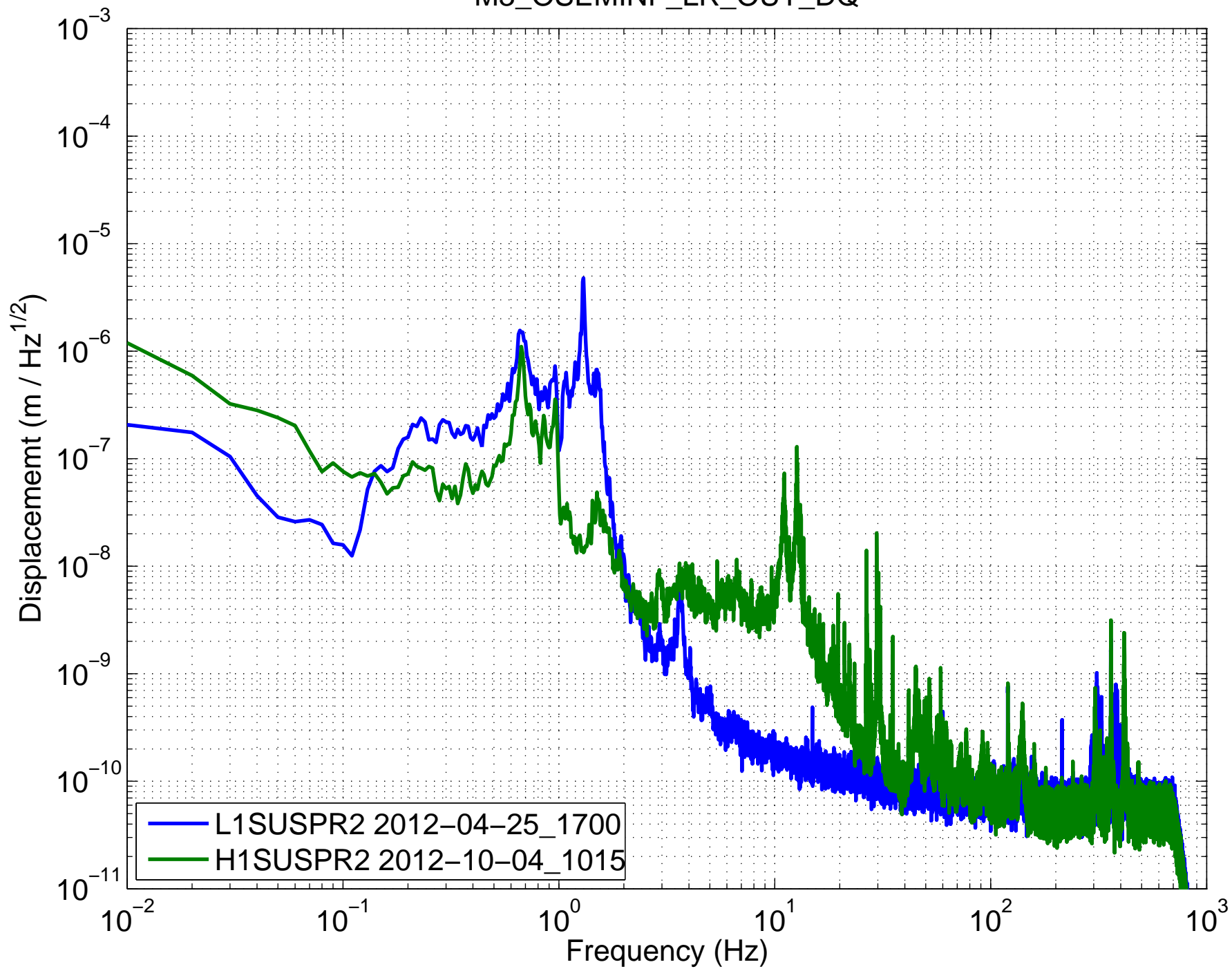


(HSTS) Amplitude Spectral Density – Damping ON
M3_OSEMINF_LL_OUT_DQ

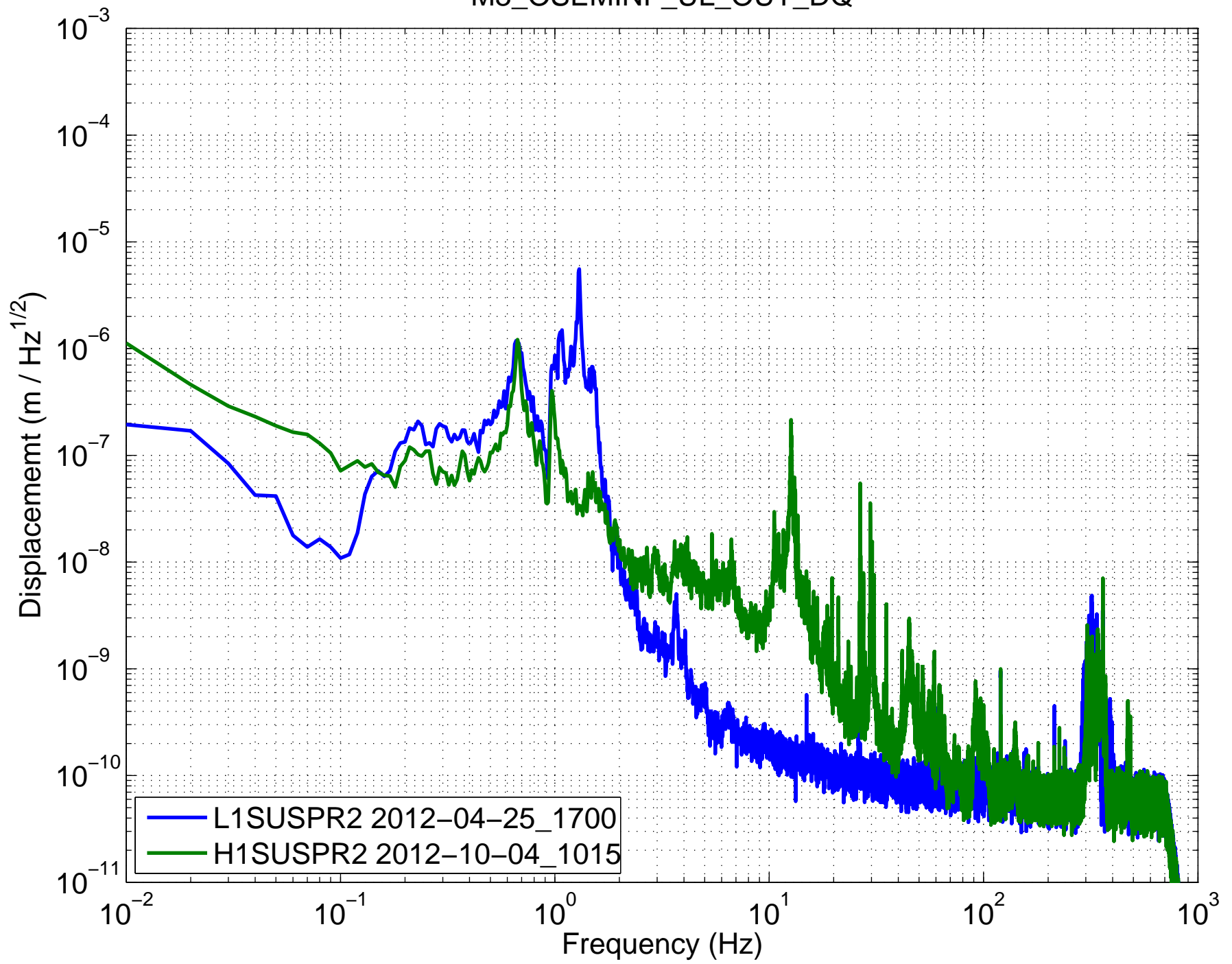


(HSTS) Amplitude Spectral Density – Damping ON

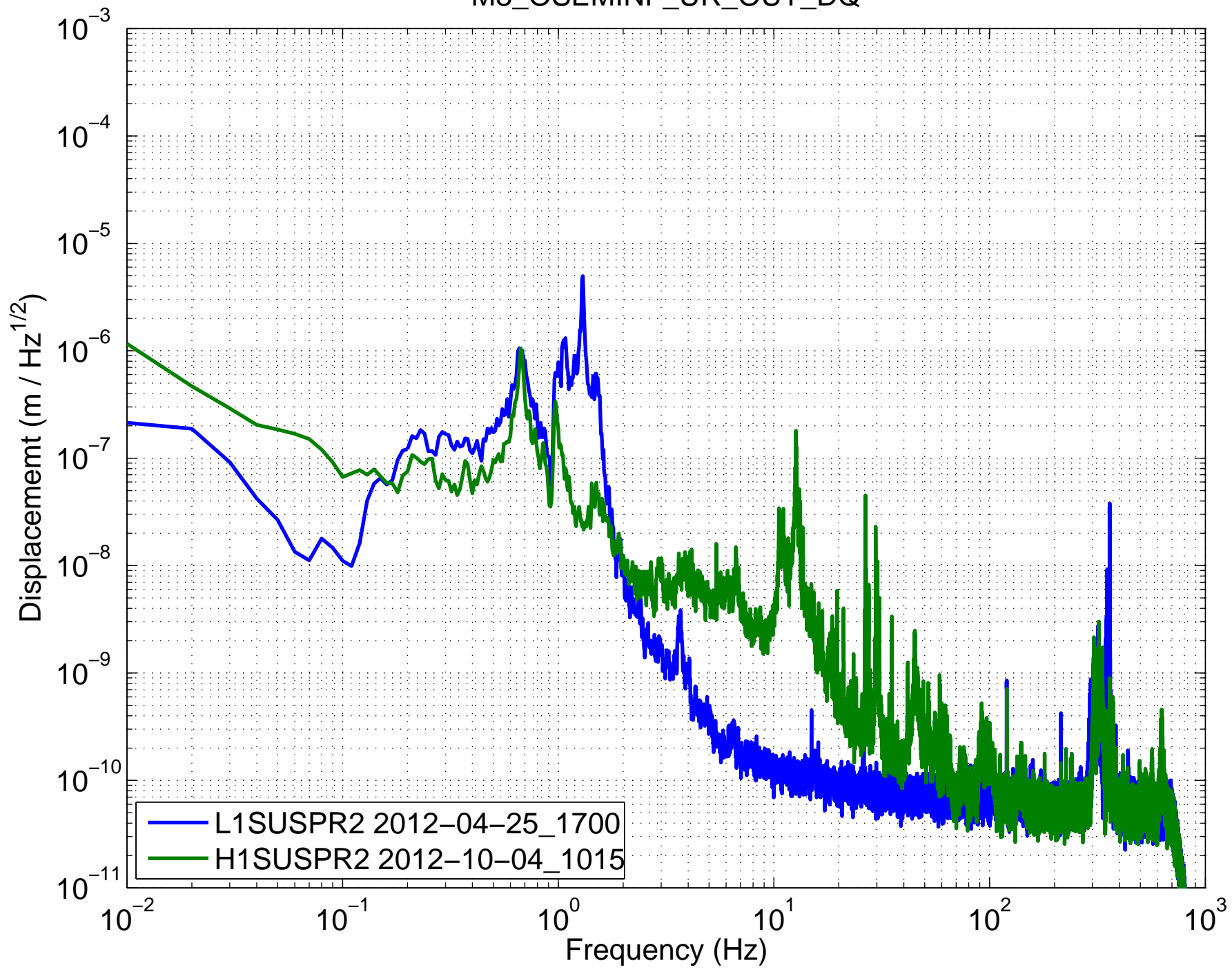
M3_OSEMINF_LR_OUT_DQ



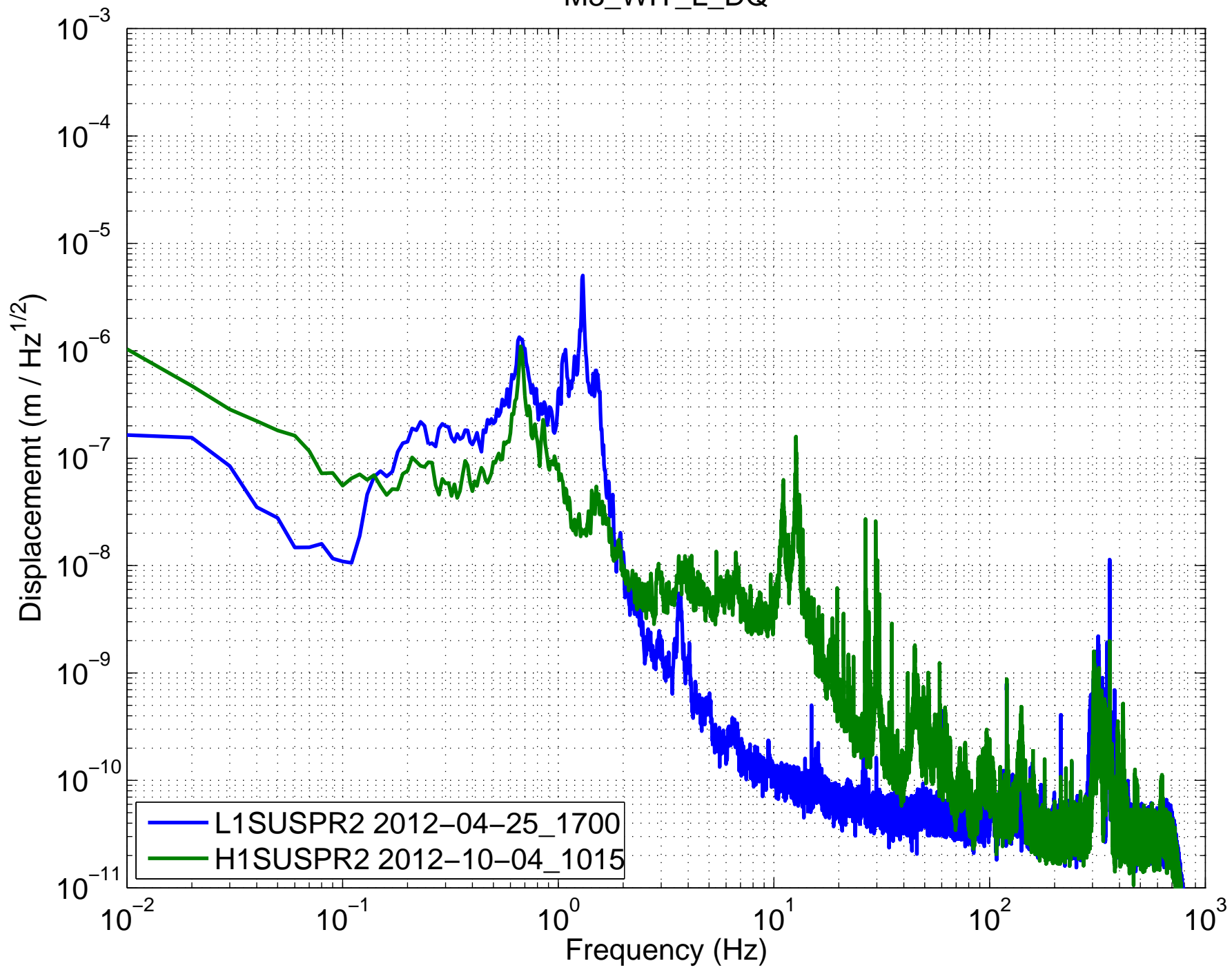
(HSTS) Amplitude Spectral Density – Damping ON
M3_OSEMINF_UL_OUT_DQ



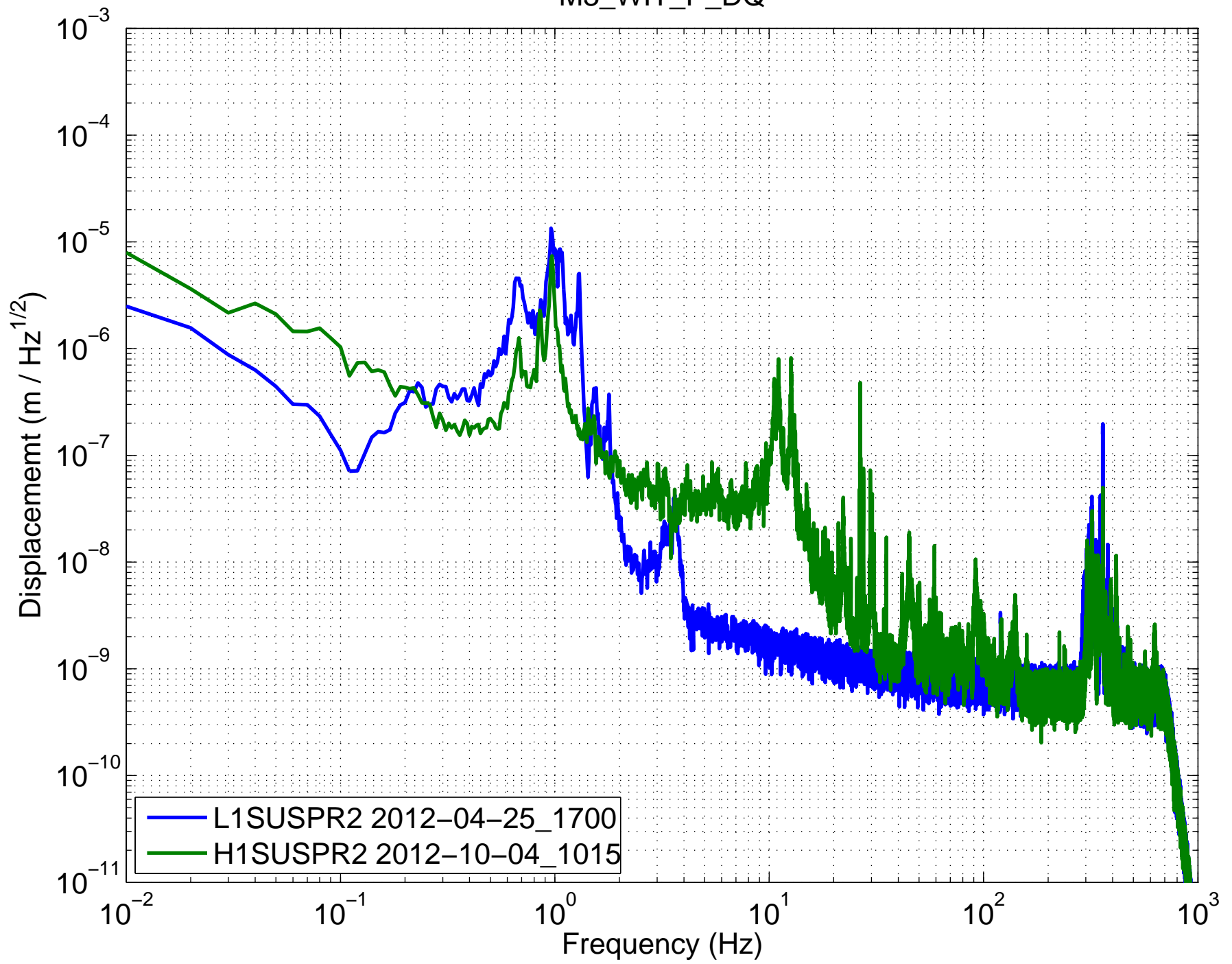
(HSTS) Amplitude Spectral Density – Damping ON
M3_OSEMINF_UR_OUT_DQ



(HSTS) Amplitude Spectral Density – Damping ON
M3_WIT_L_DQ



(HSTS) Amplitude Spectral Density – Damping ON
M3_WIT_P_DQ



(HSTS) Amplitude Spectral Density – Damping ON
M3_WIT_Y_DQ

