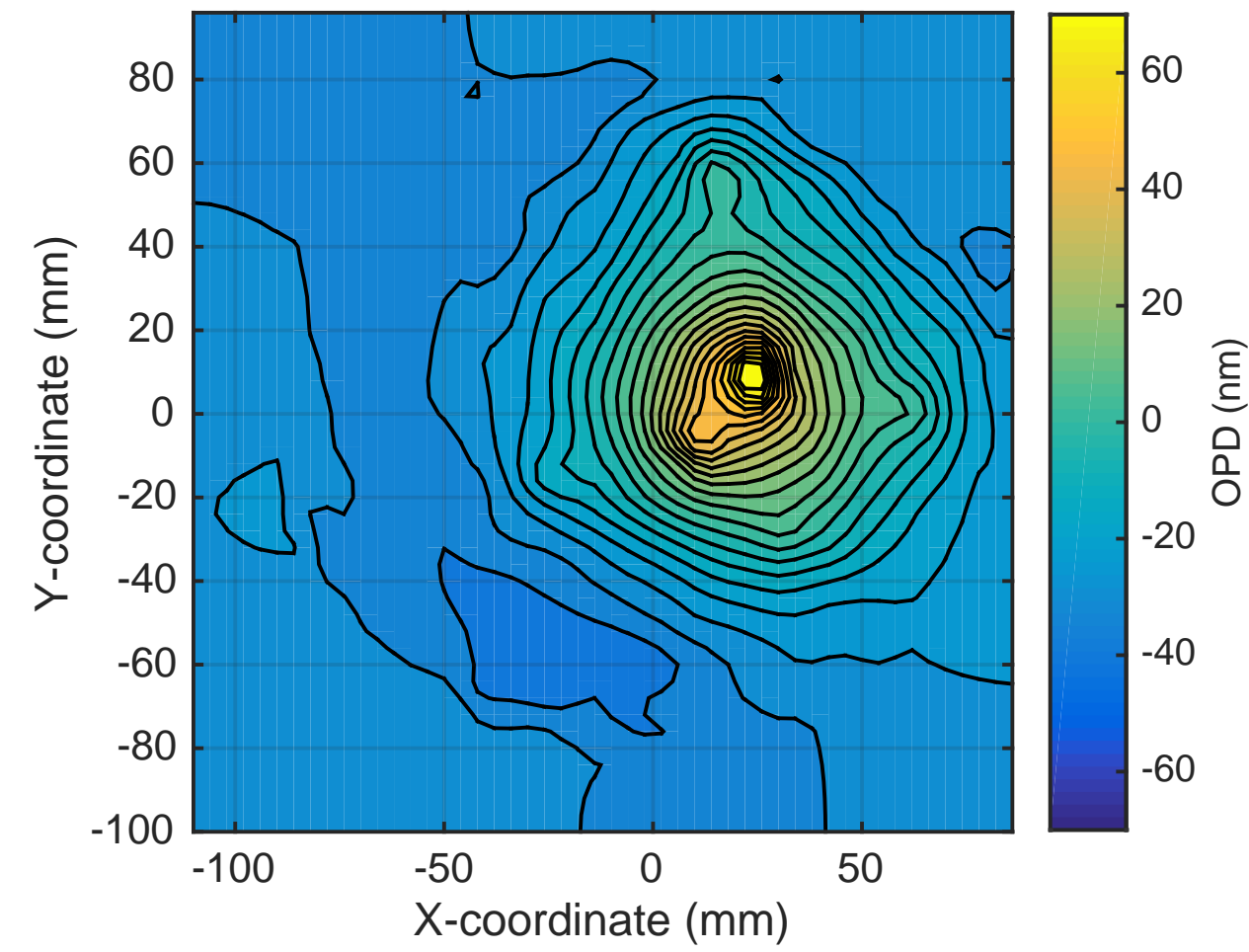
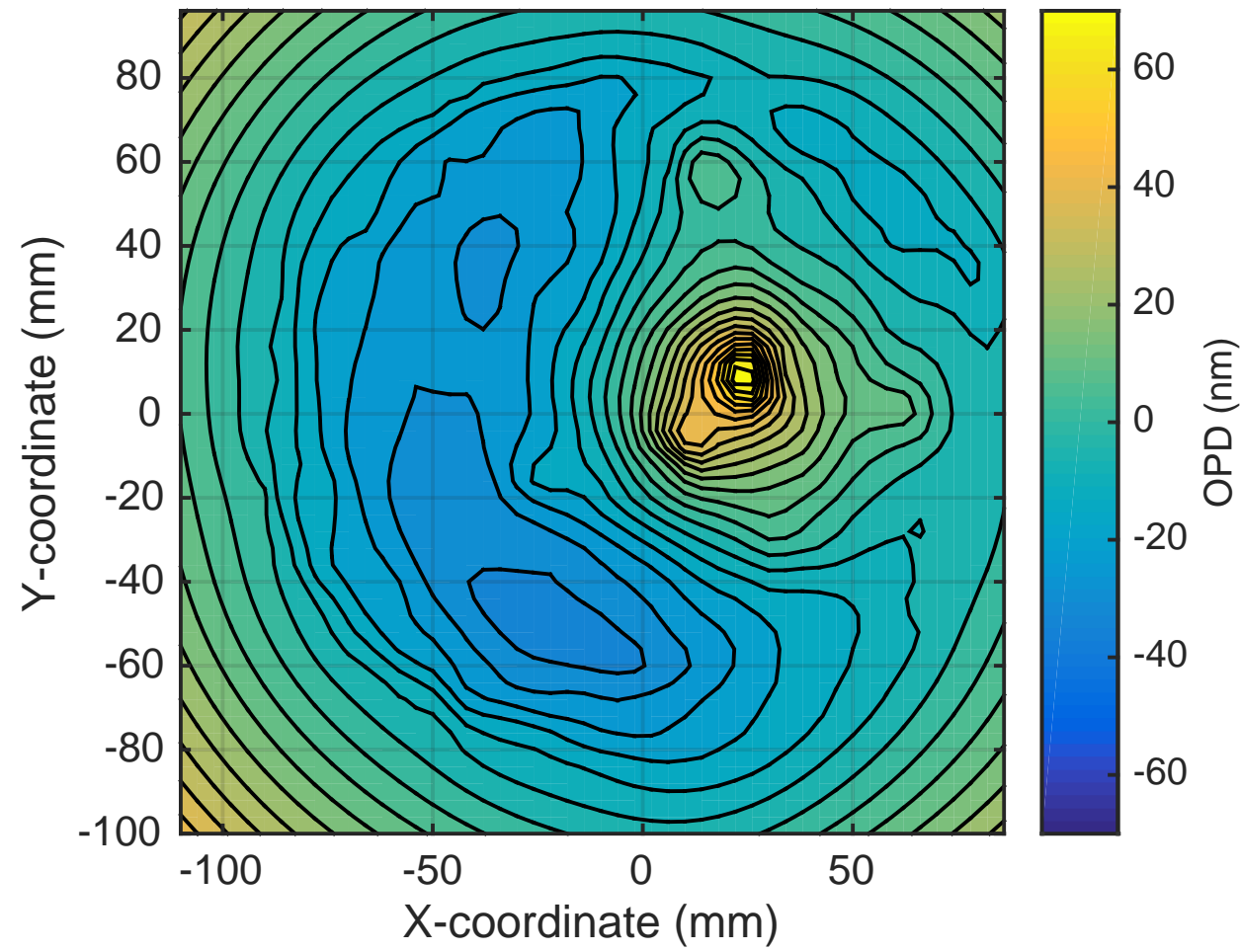


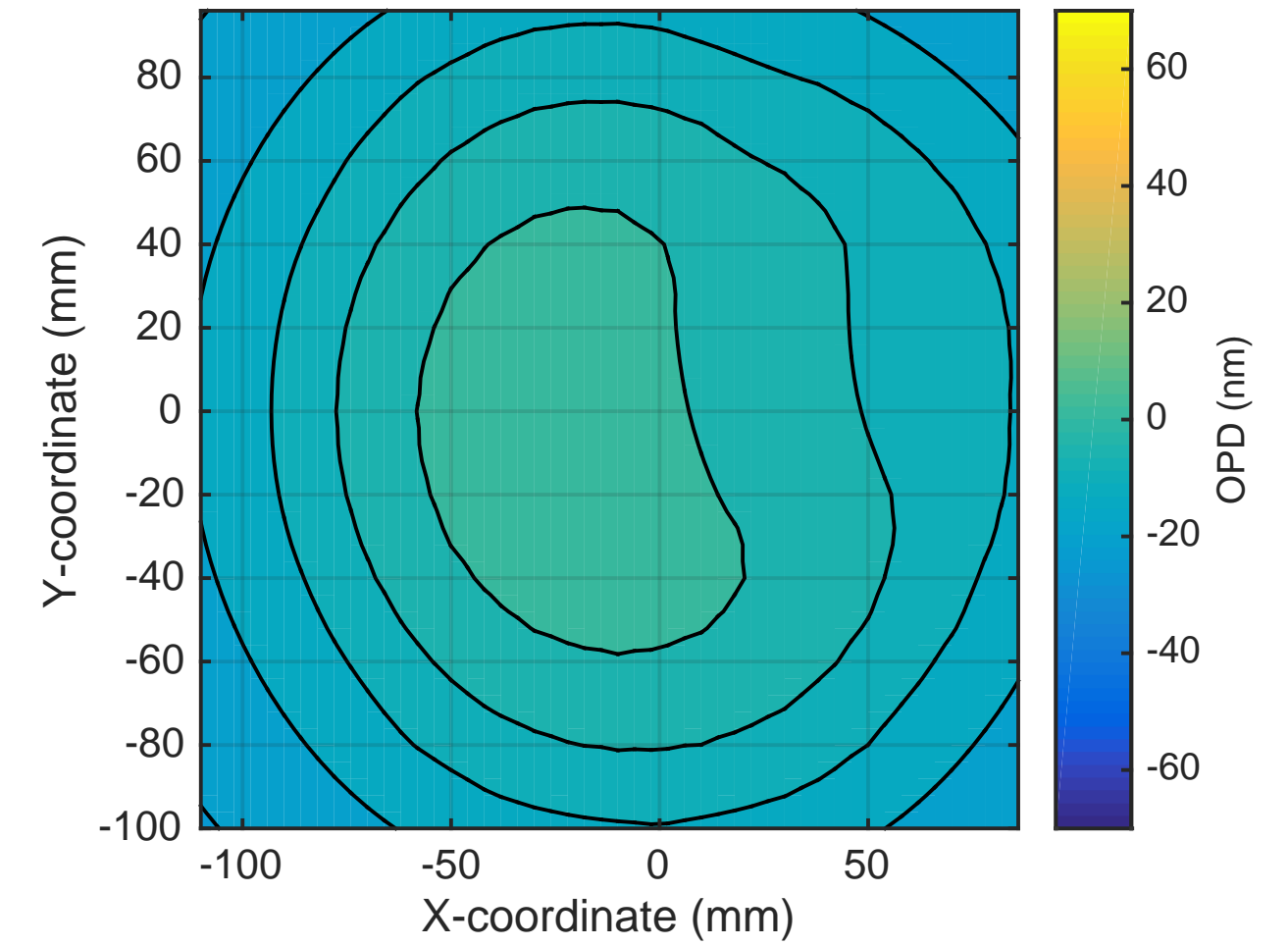
SP OPD: H1ITMY SELF @30W uncorrected. RMS = 25nm



SP OPD now: H1ITMY SELF @30W + RH @0.75W. RMS = 22nm

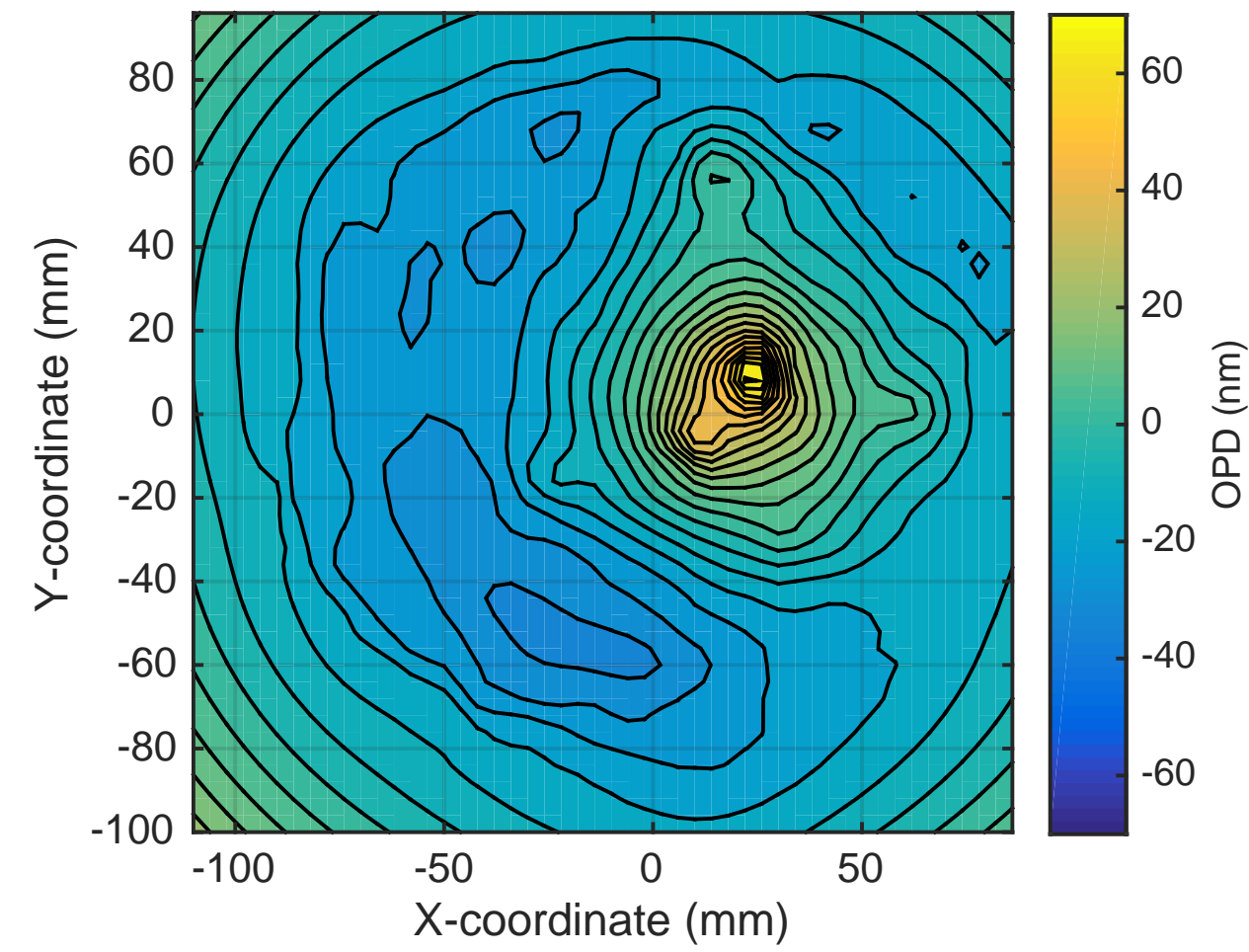


SP OPD CO2 mask: 50mW, RMS = 3nm

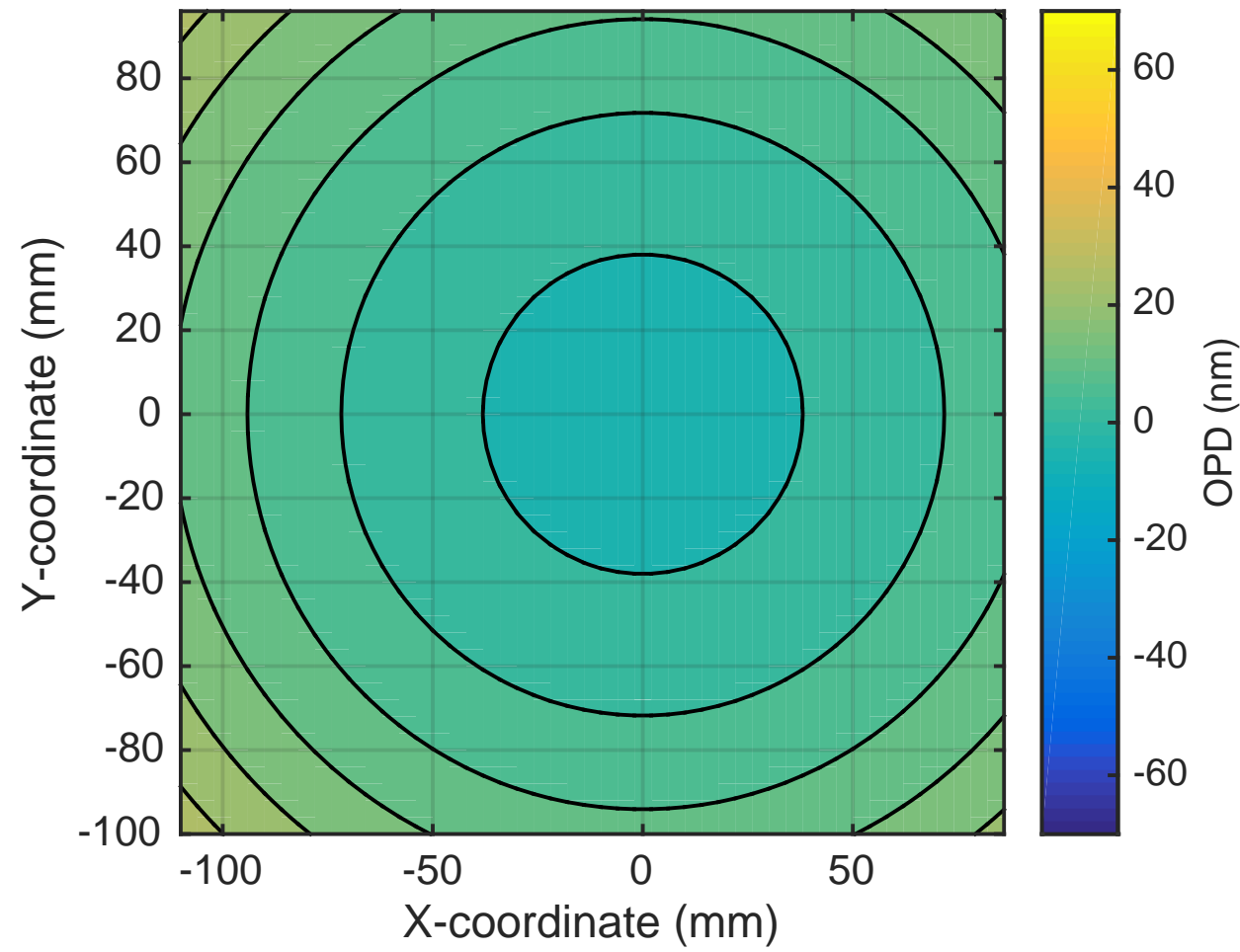


Contour spacing = 5nm

OPD Now + CO2 mask: 50mW, RMS = 21nm



Optimum additional RH: 0.3W. RMS = 2nm



OPD Now + CO2 mask: 50mW + RH @ 1.05W total. RMS = 20nm

