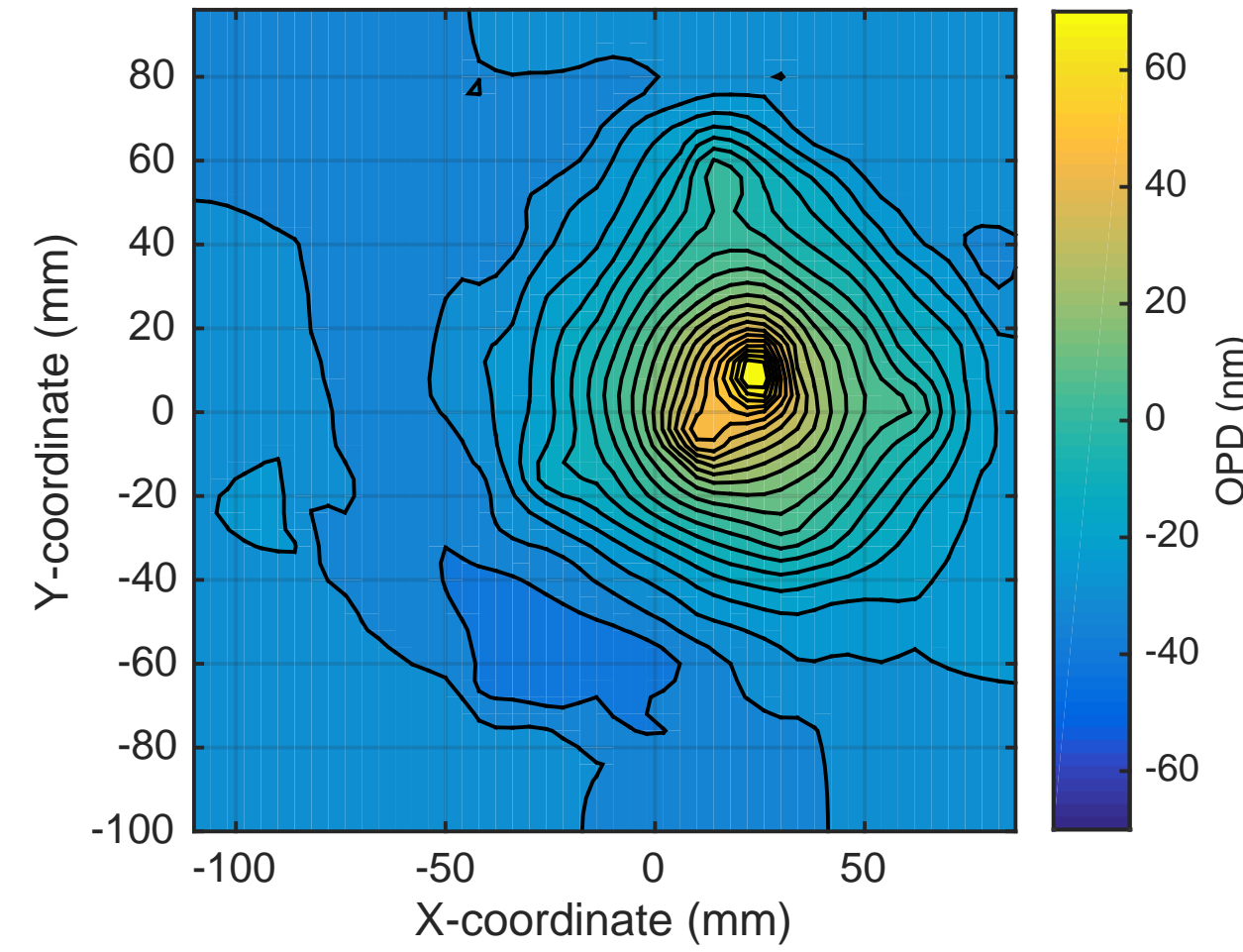
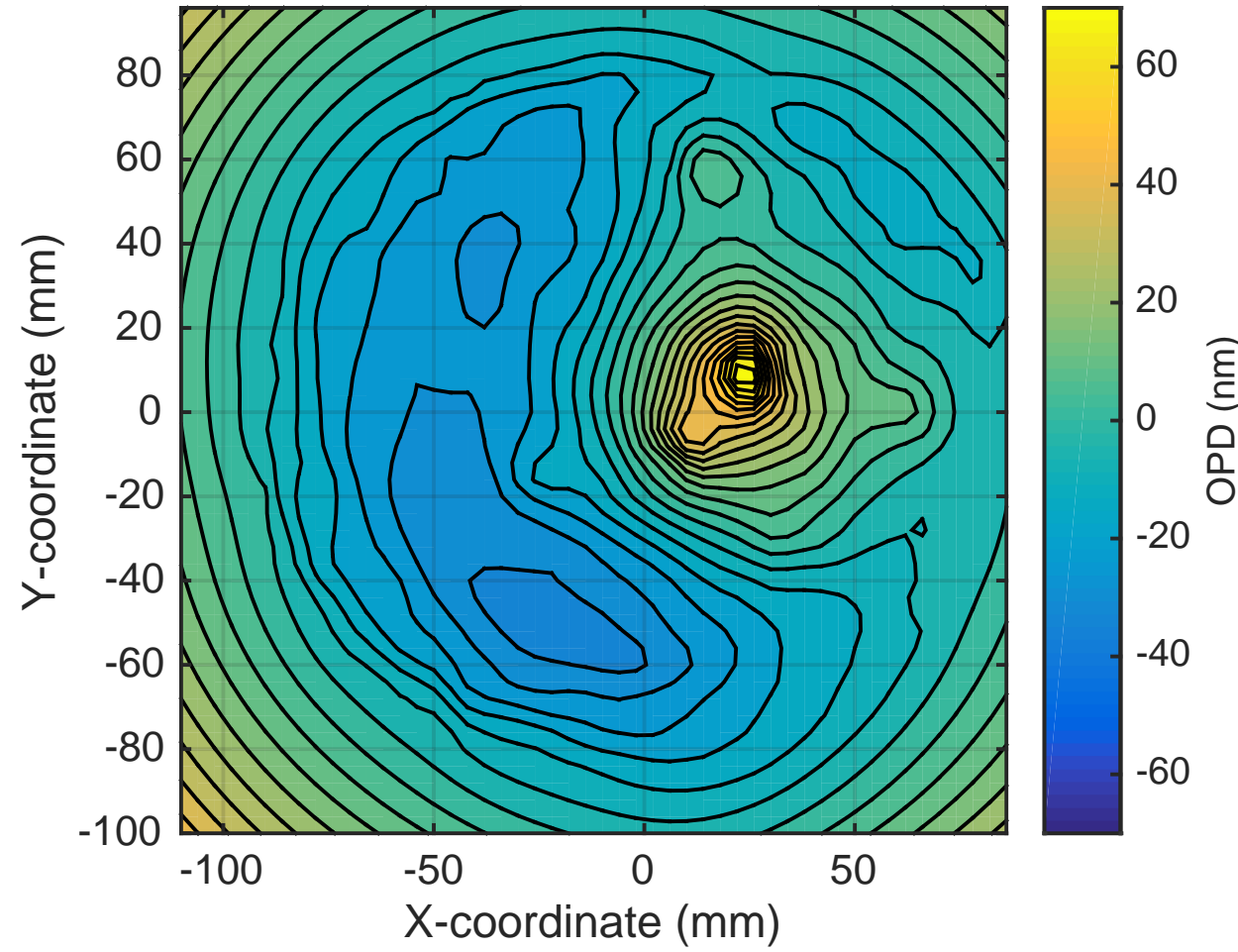


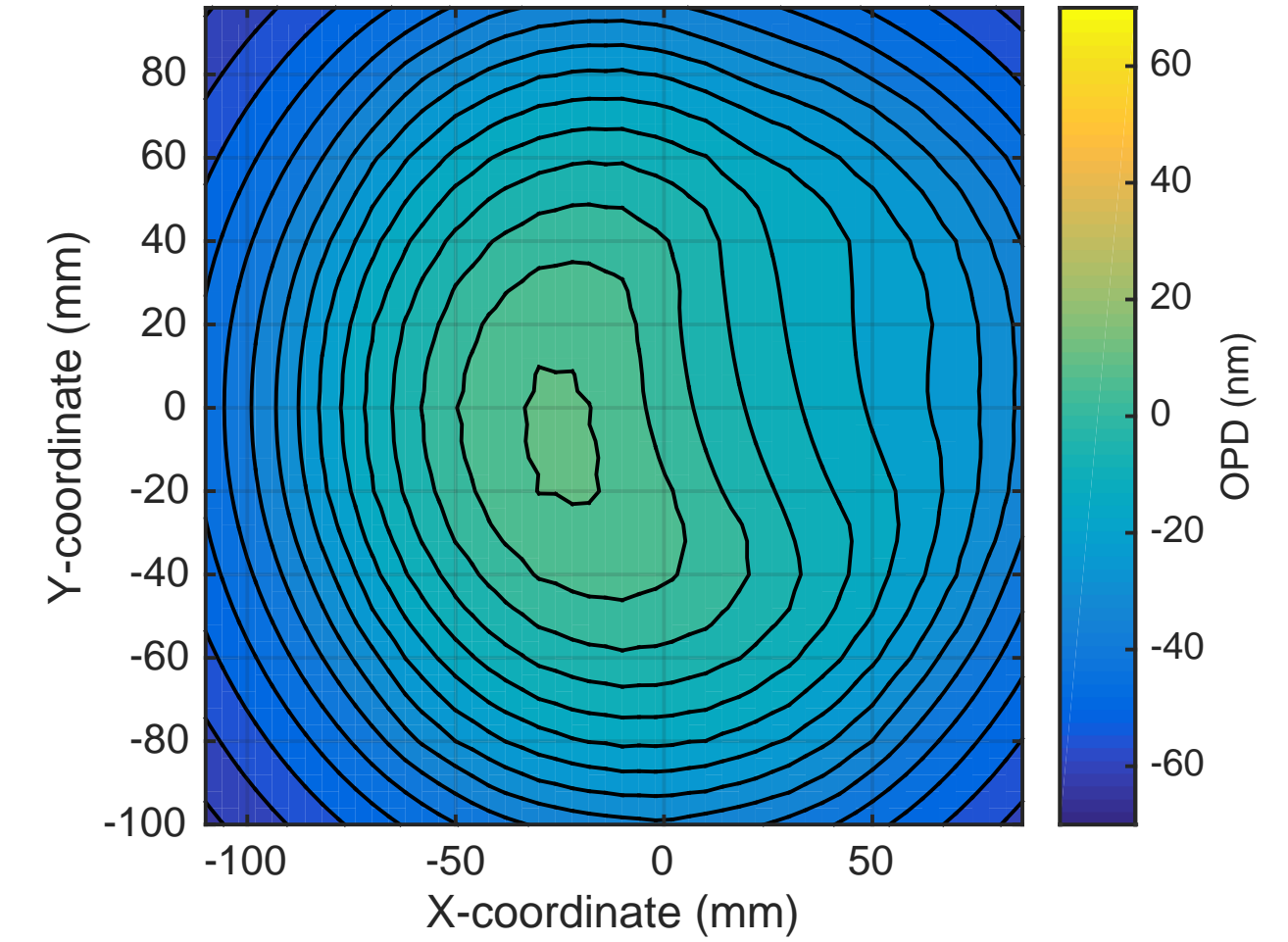
SP OPD: H1ITMY SELF @30W uncorrected. RMS = 25nm



SP OPD now: H1ITMY SELF @30W + RH @0.75W. RMS = 22nm

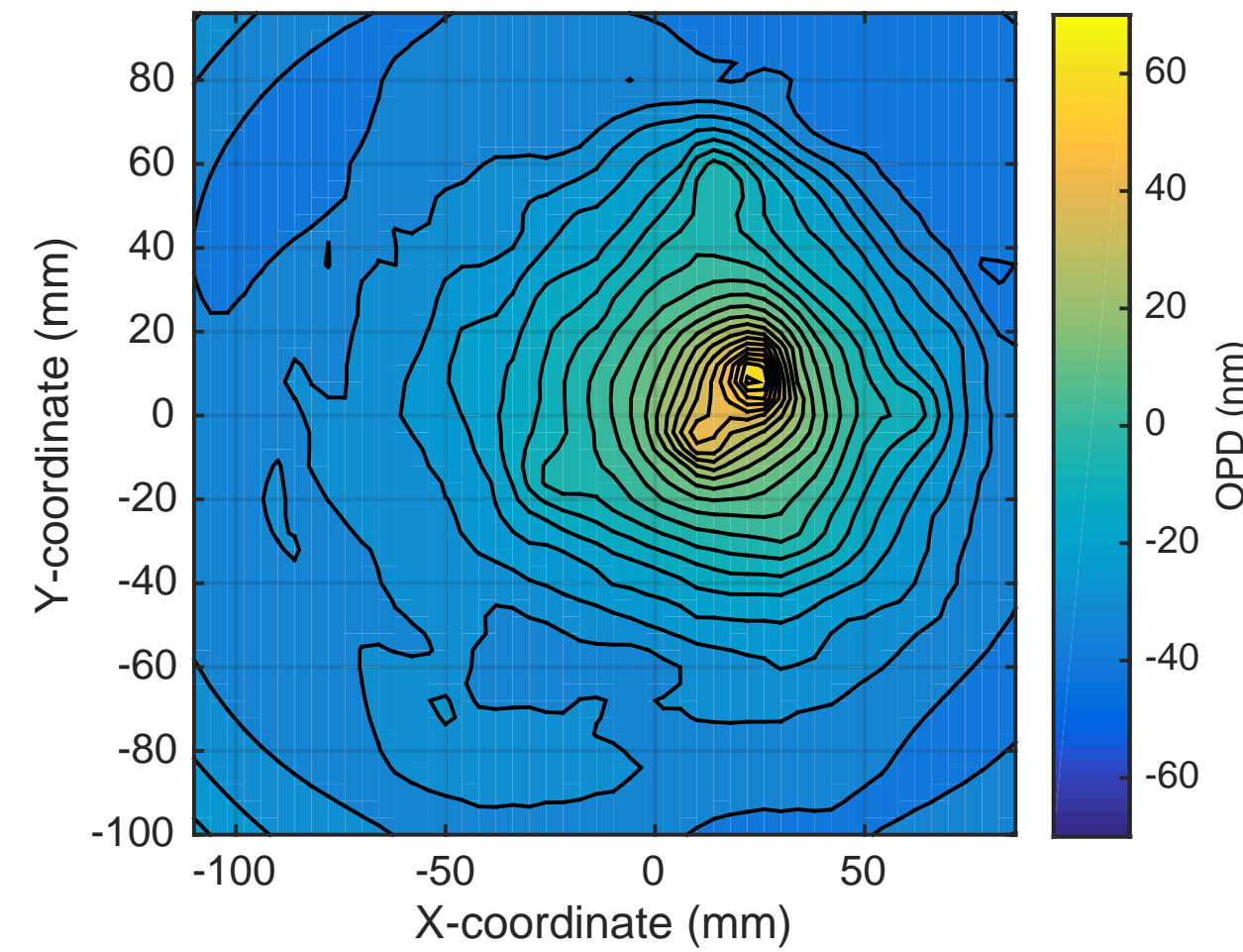


SP OPD CO2 mask: 150mW, RMS = 8nm

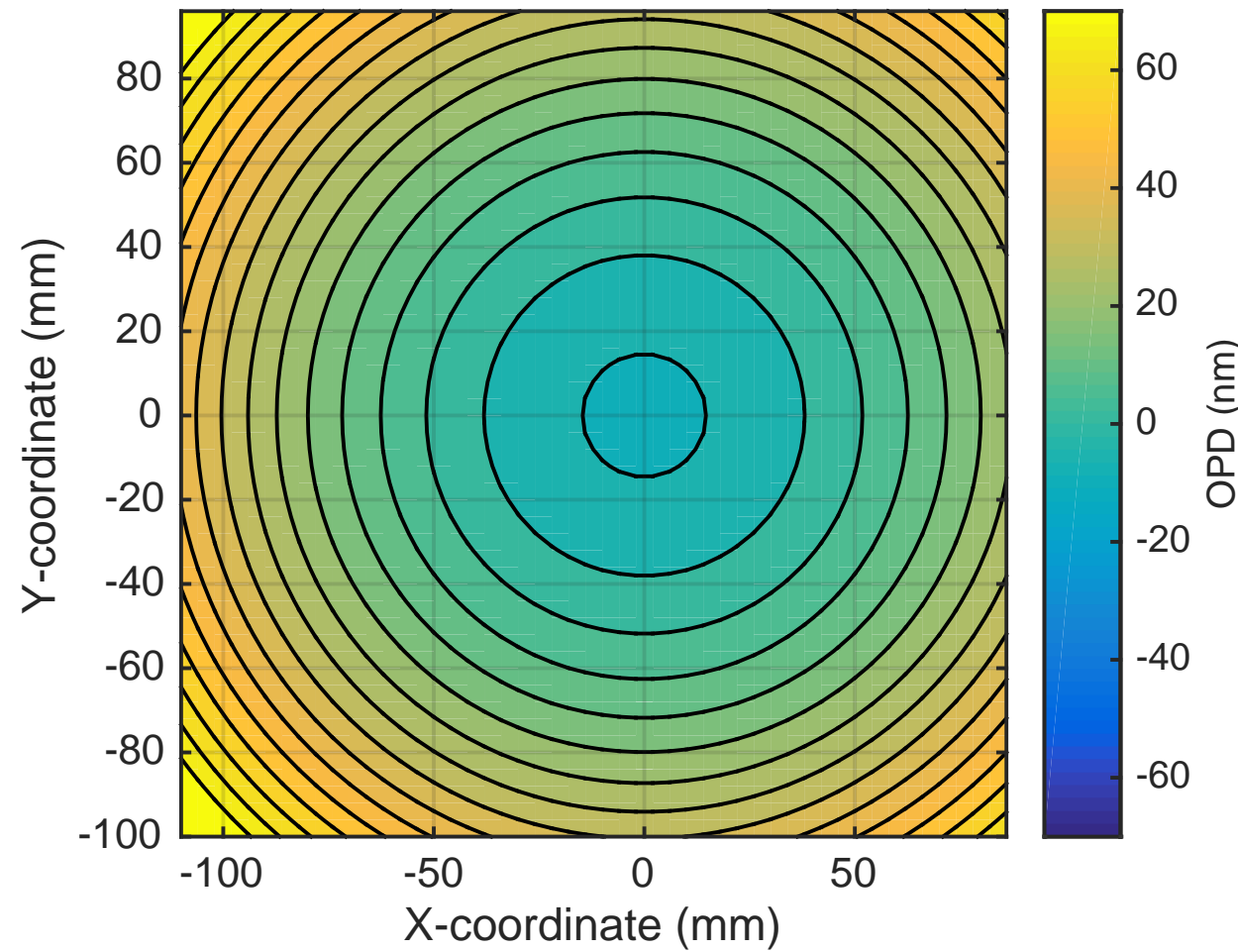


Contour spacing = 5nm

OPD Now + CO2 mask: 150mW, RMS =20nm



Optimum additional RH: 0.9W. RMS = 6nm



OPD Now + CO2 mask: 150mW + RH @ 1.65W total. RMS = 17nm

