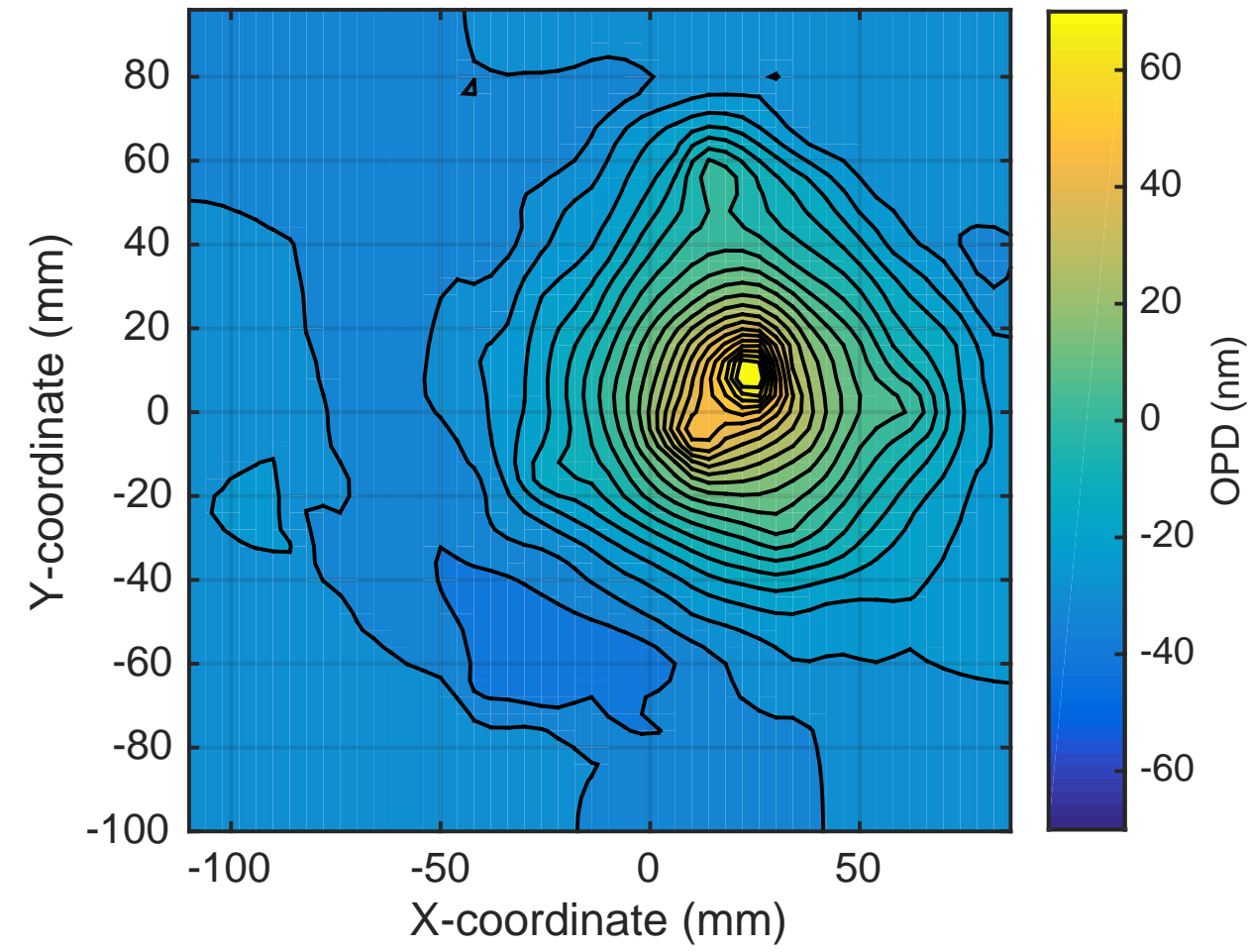
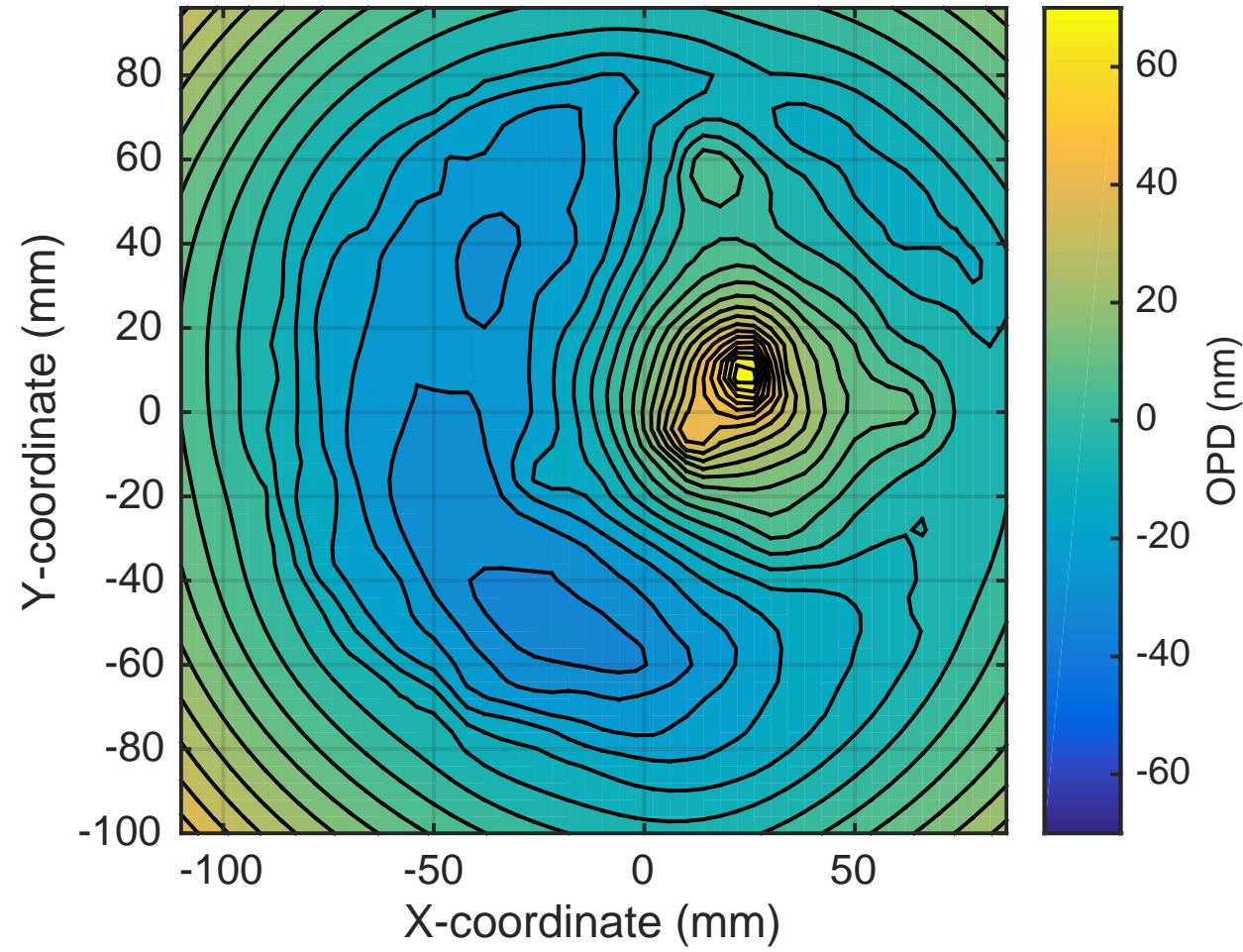


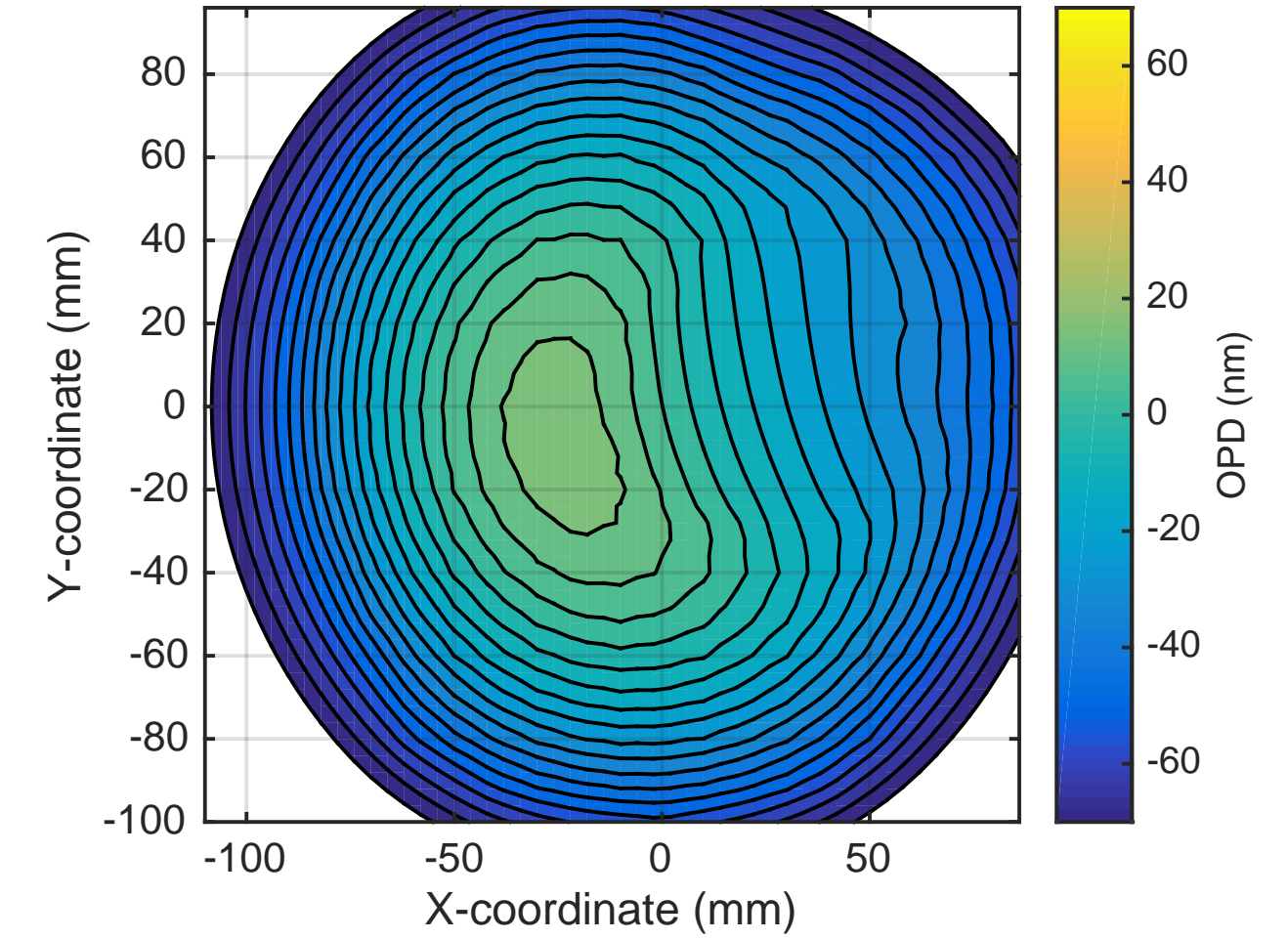
SP OPD: H1ITMY SELF @30W uncorrected. RMS = 25nm



SP OPD now: H1ITMY SELF @30W + RH @0.75W. RMS = 22nm

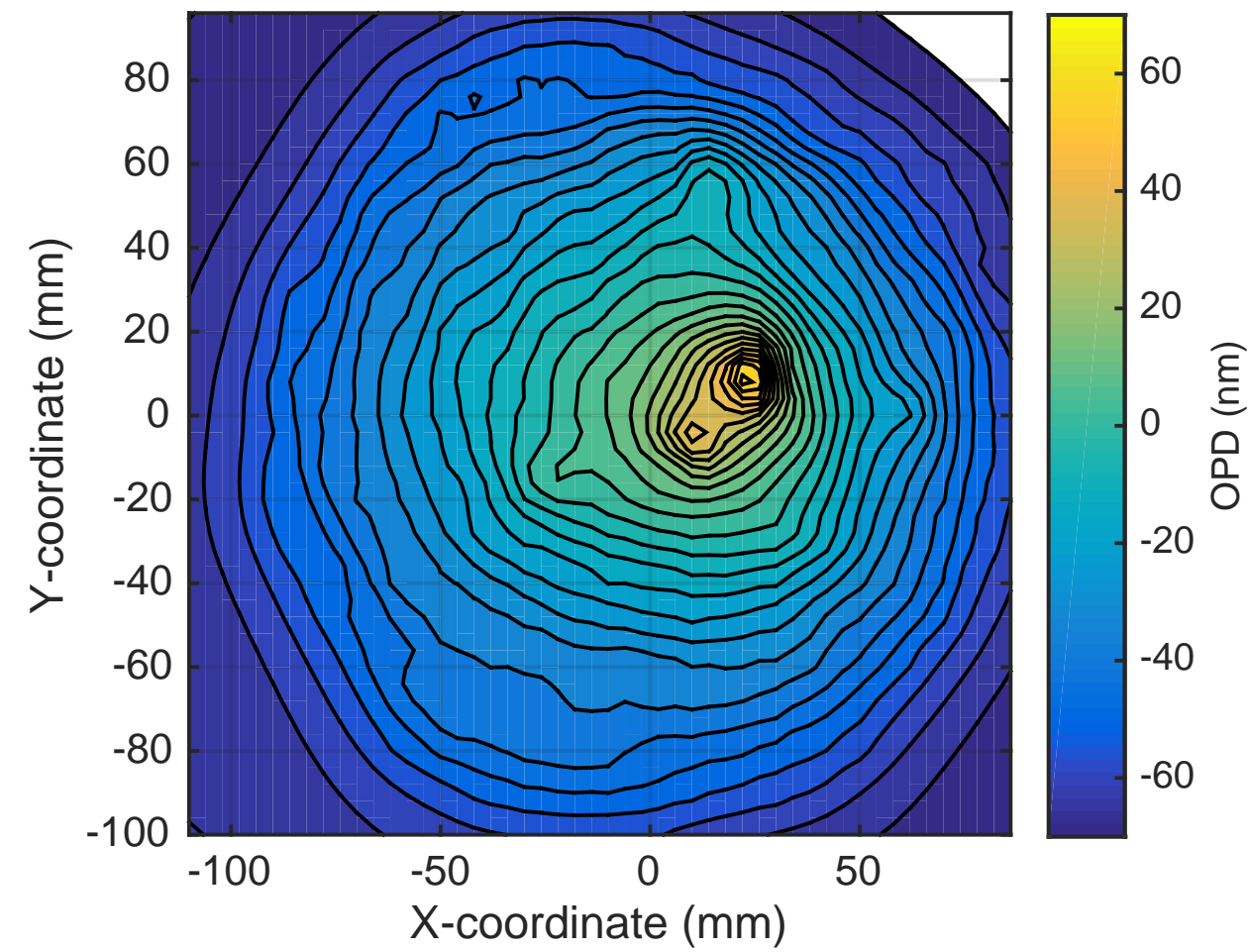


SP OPD CO2 mask: 250mW, RMS = 14nm

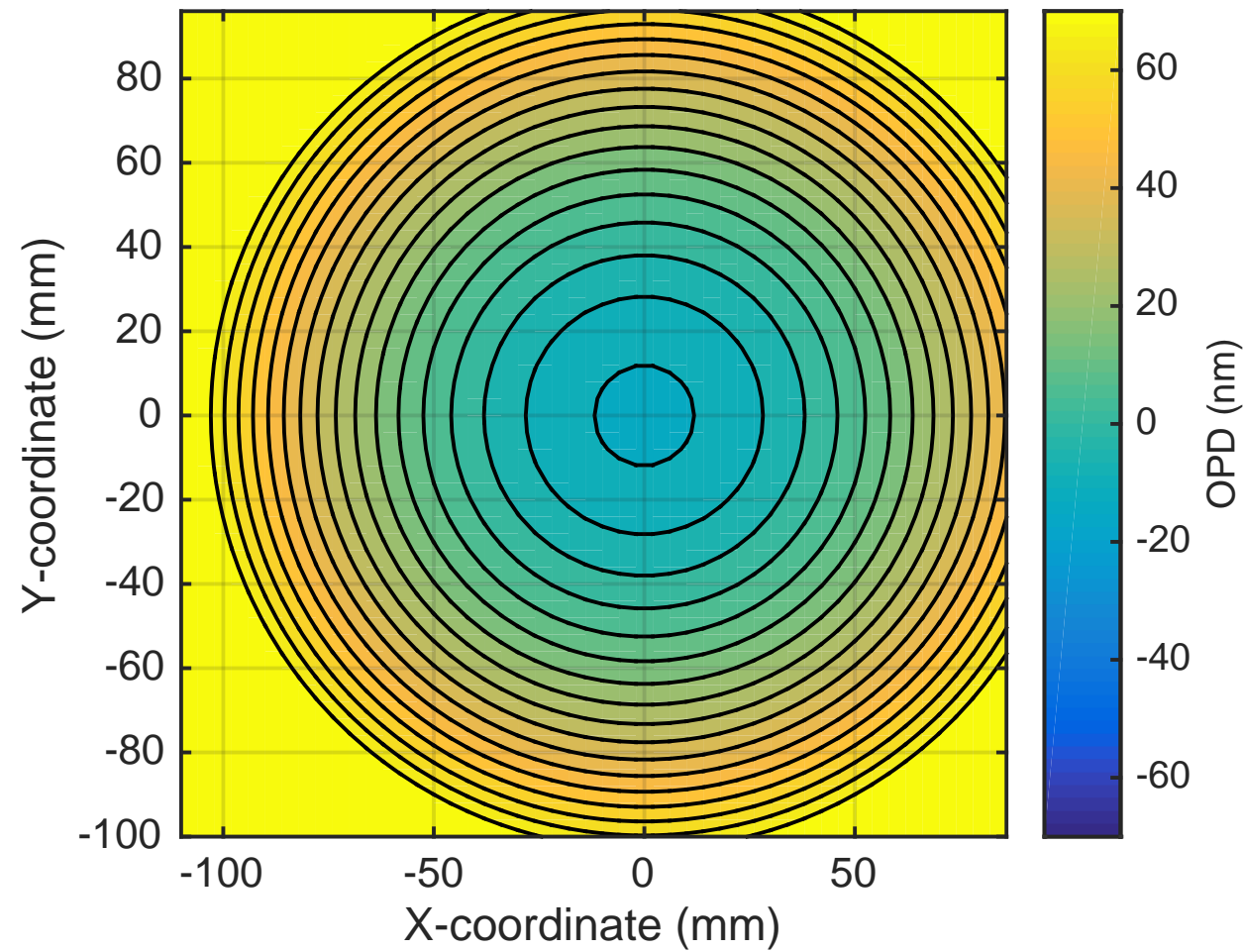


Contour spacing = 5nm

OPD Now + CO2 mask: 250mW, RMS = 20nm



Optimum additional RH: 1.7W. RMS = 11nm



OPD Now + CO2 mask: 250mW + RH @ 2.45W total. RMS = 13nm

