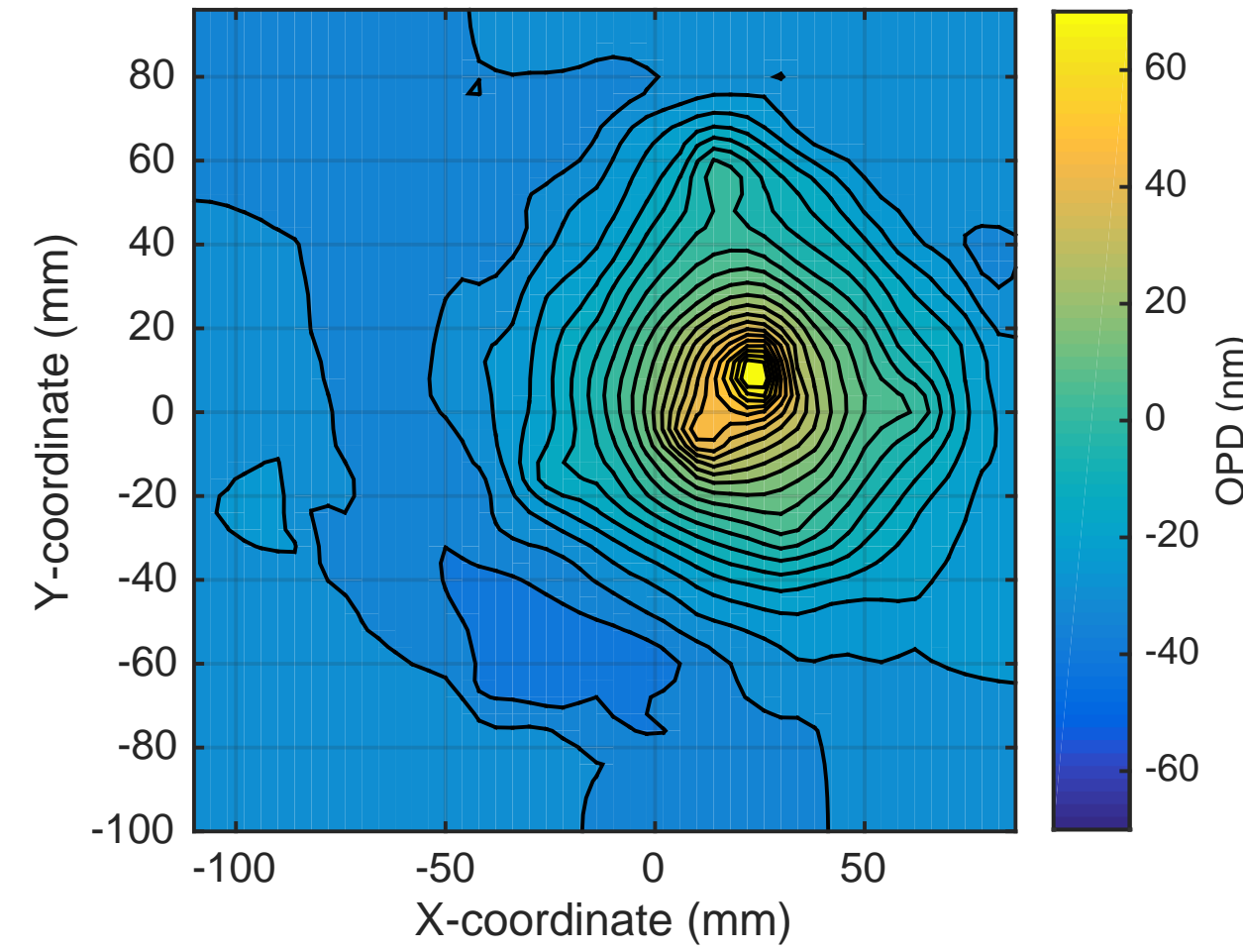
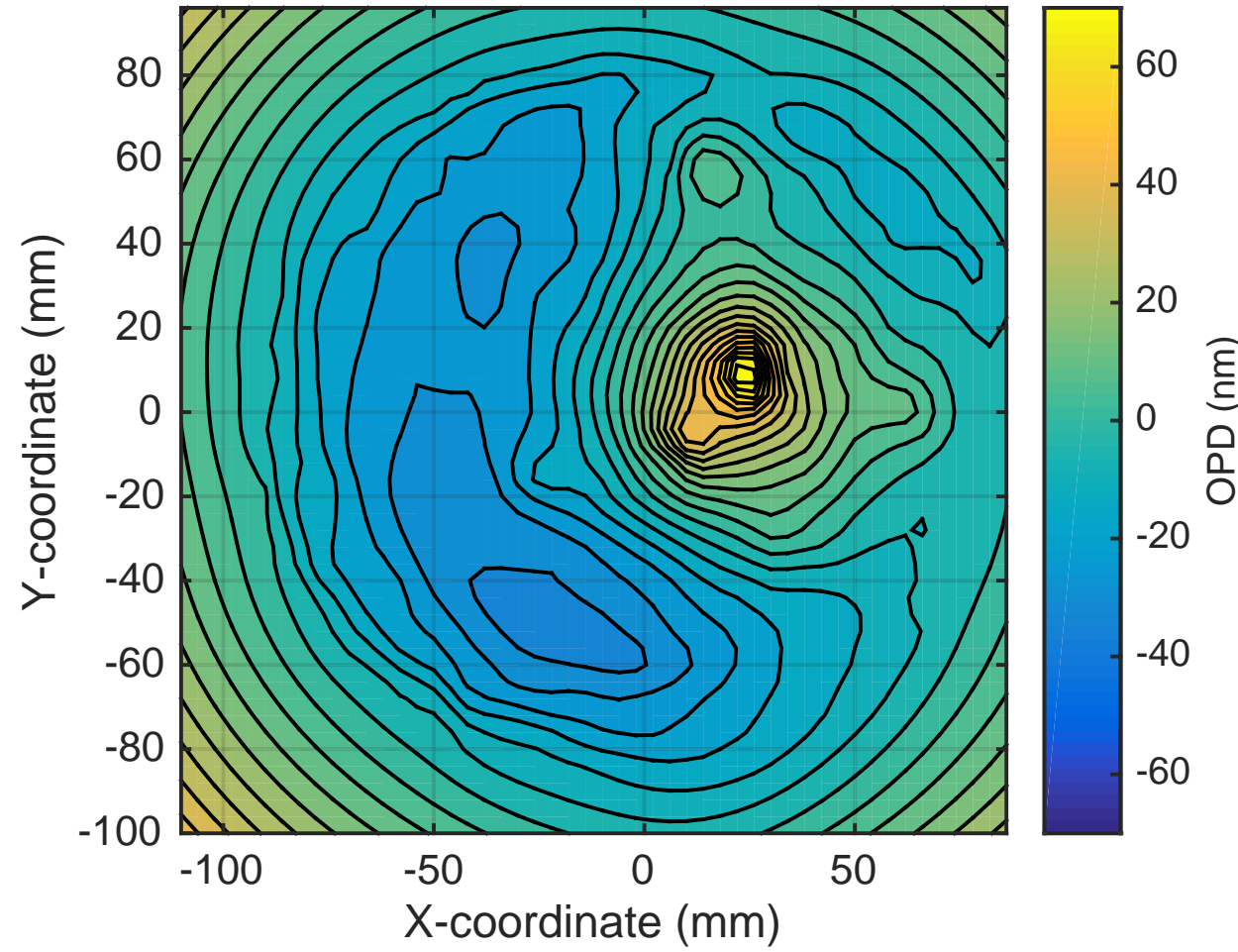


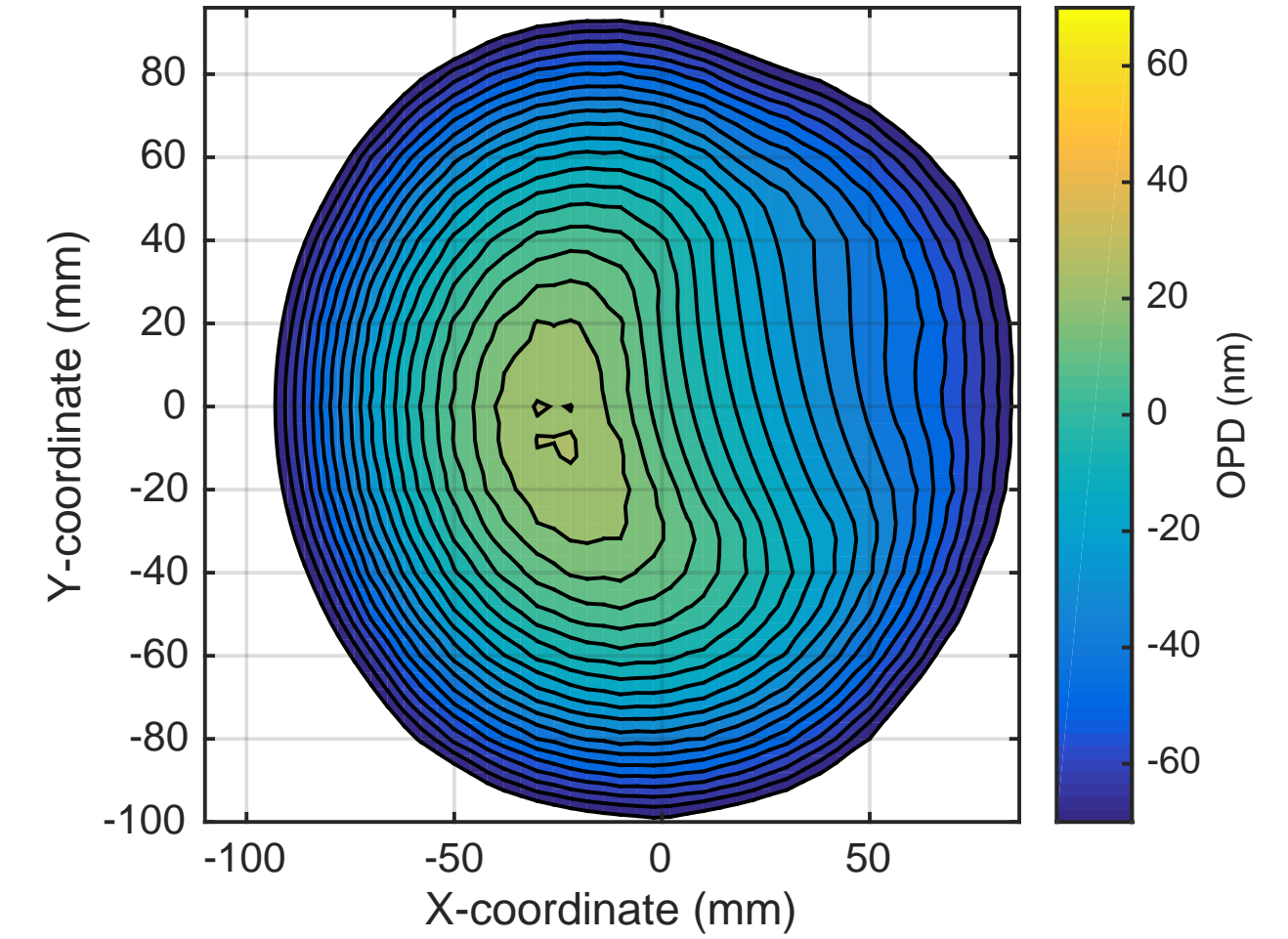
SP OPD: H1ITMY SELF @30W uncorrected. RMS = 25nm



SP OPD now: H1ITMY SELF @30W + RH @0.75W. RMS = 22nm

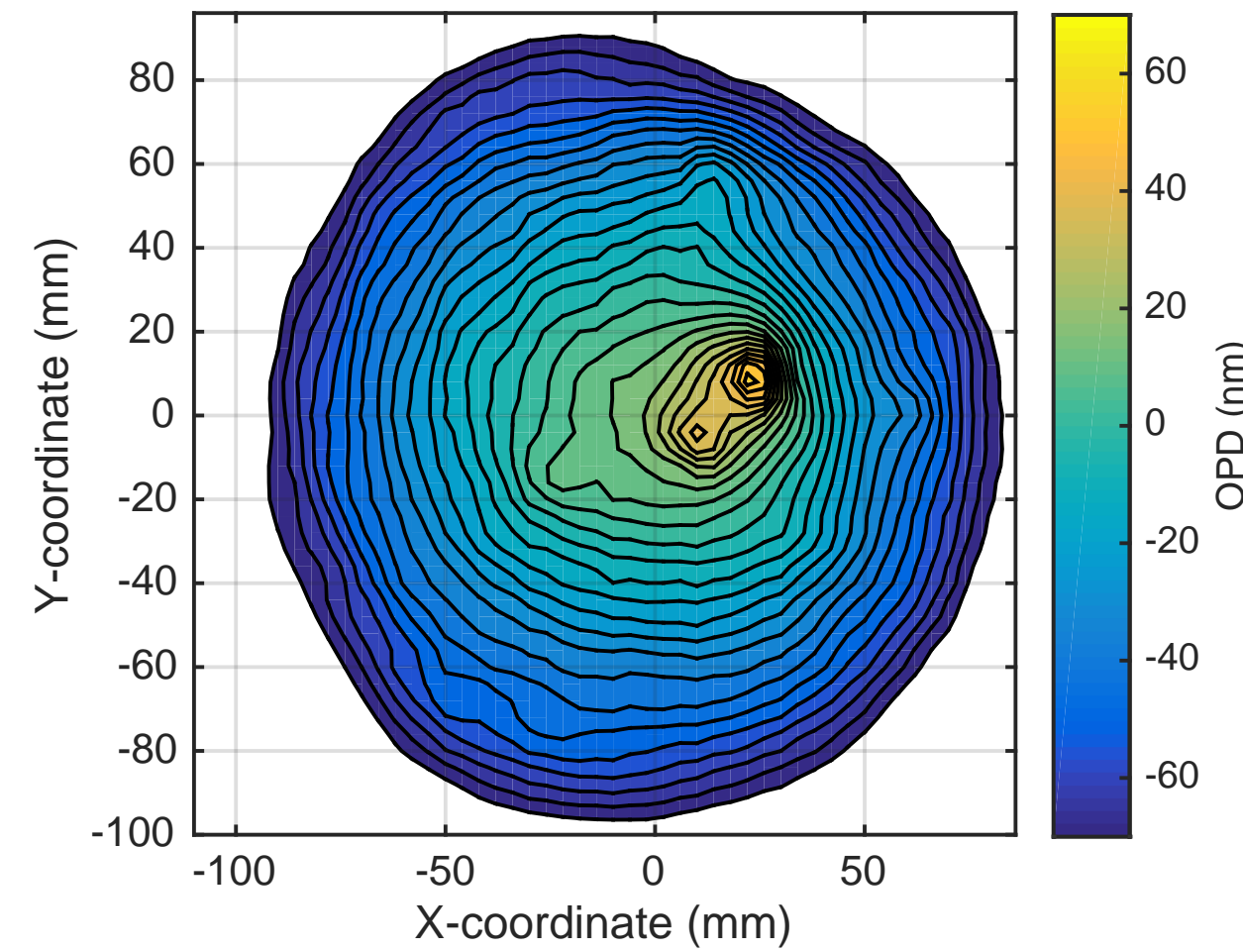


SP OPD CO2 mask: 350mW, RMS = 19nm

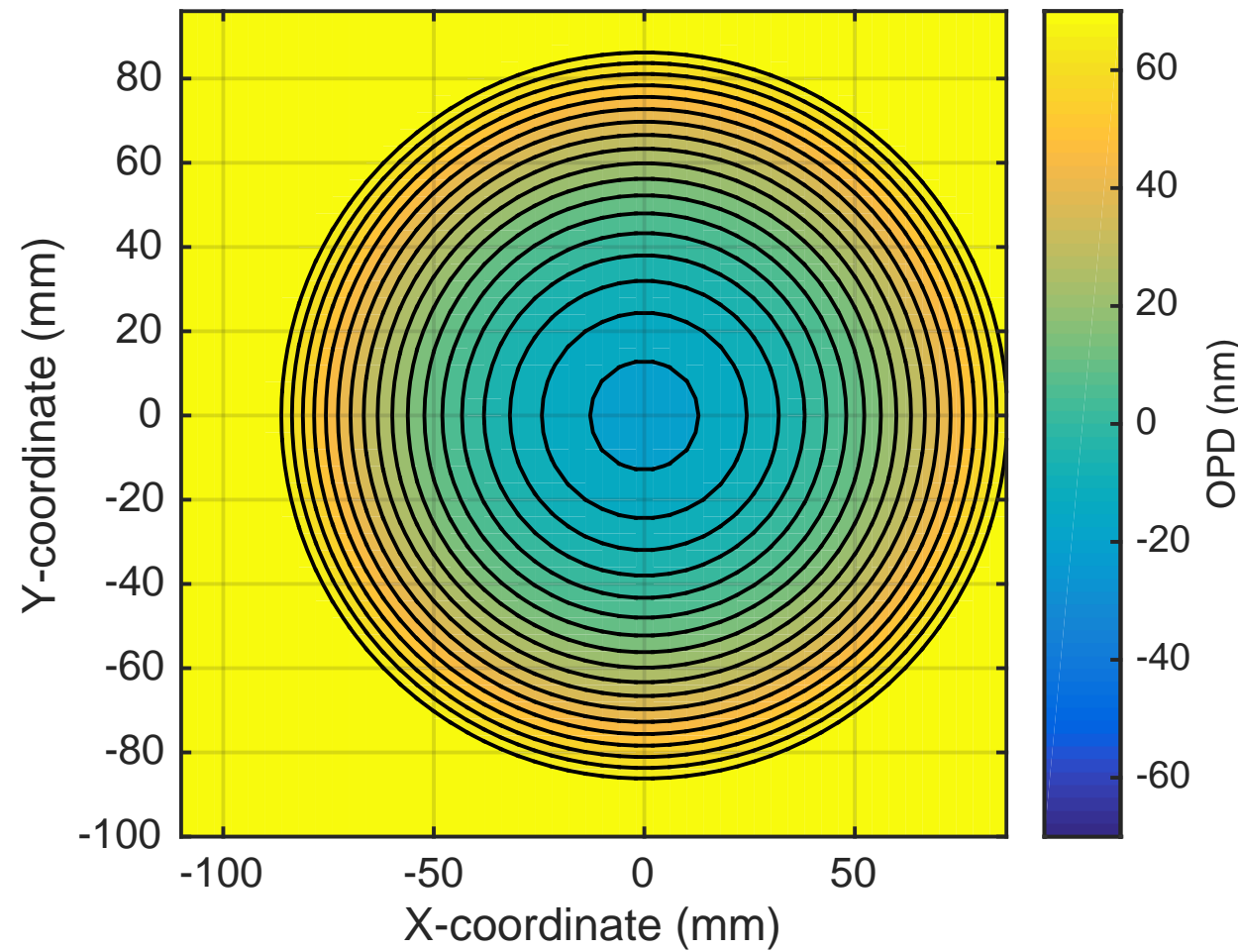


Contour spacing = 5nm

OPD Now + CO2 mask: 350mW, RMS = 22nm



Optimum additional RH: 2.6W. RMS = 17nm



OPD Now + CO2 mask: 350mW + RH @ 3.35W total. RMS = 9nm

