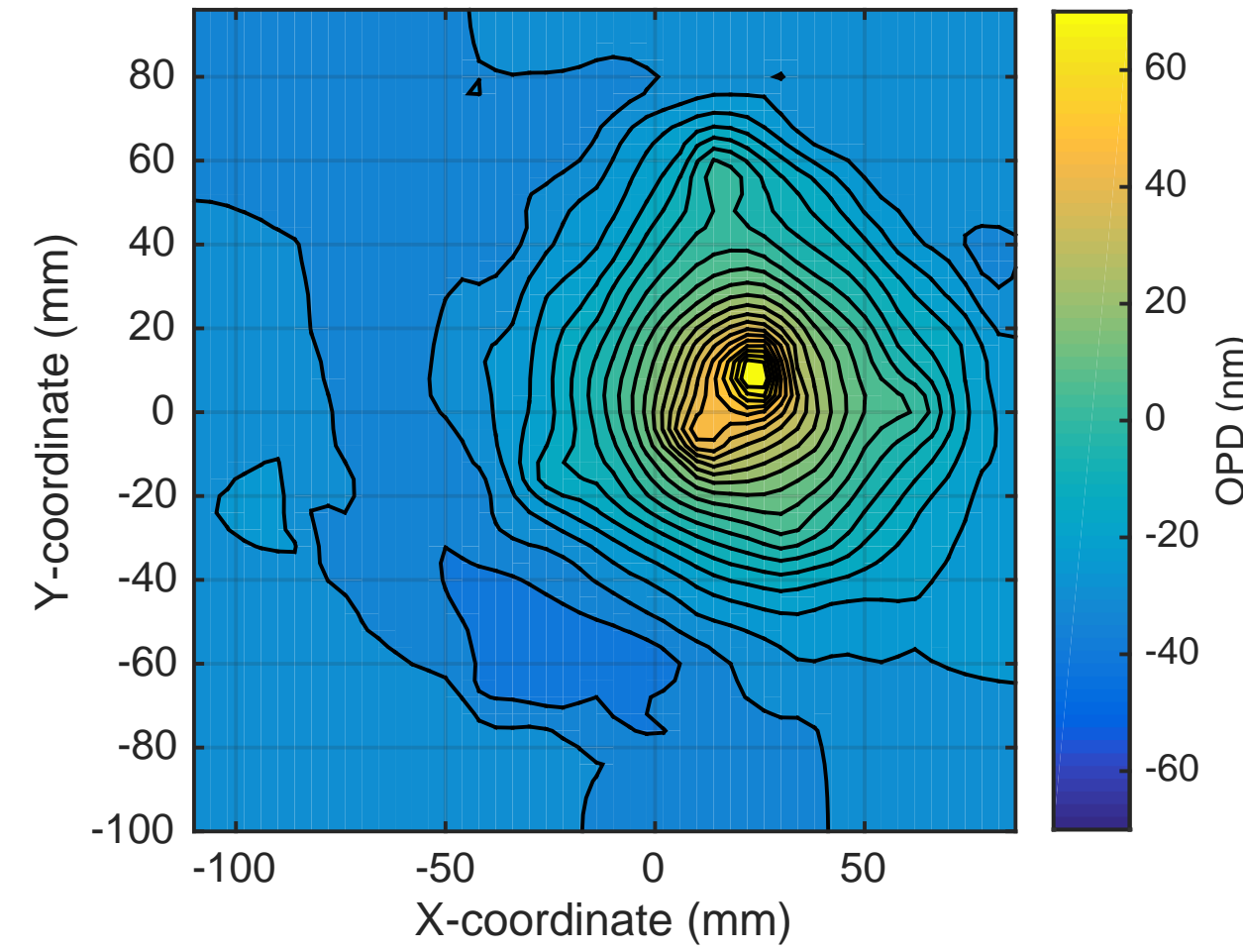
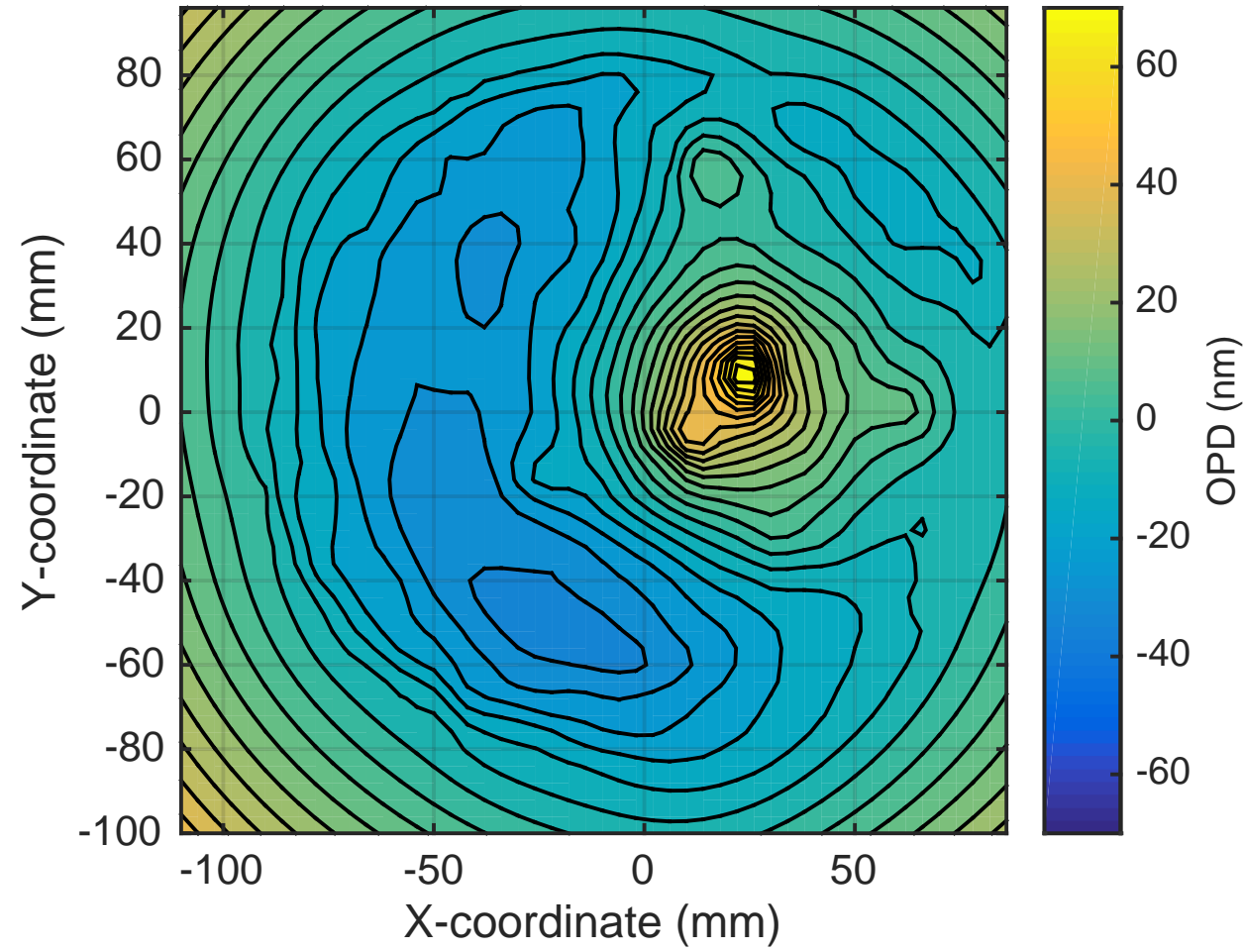


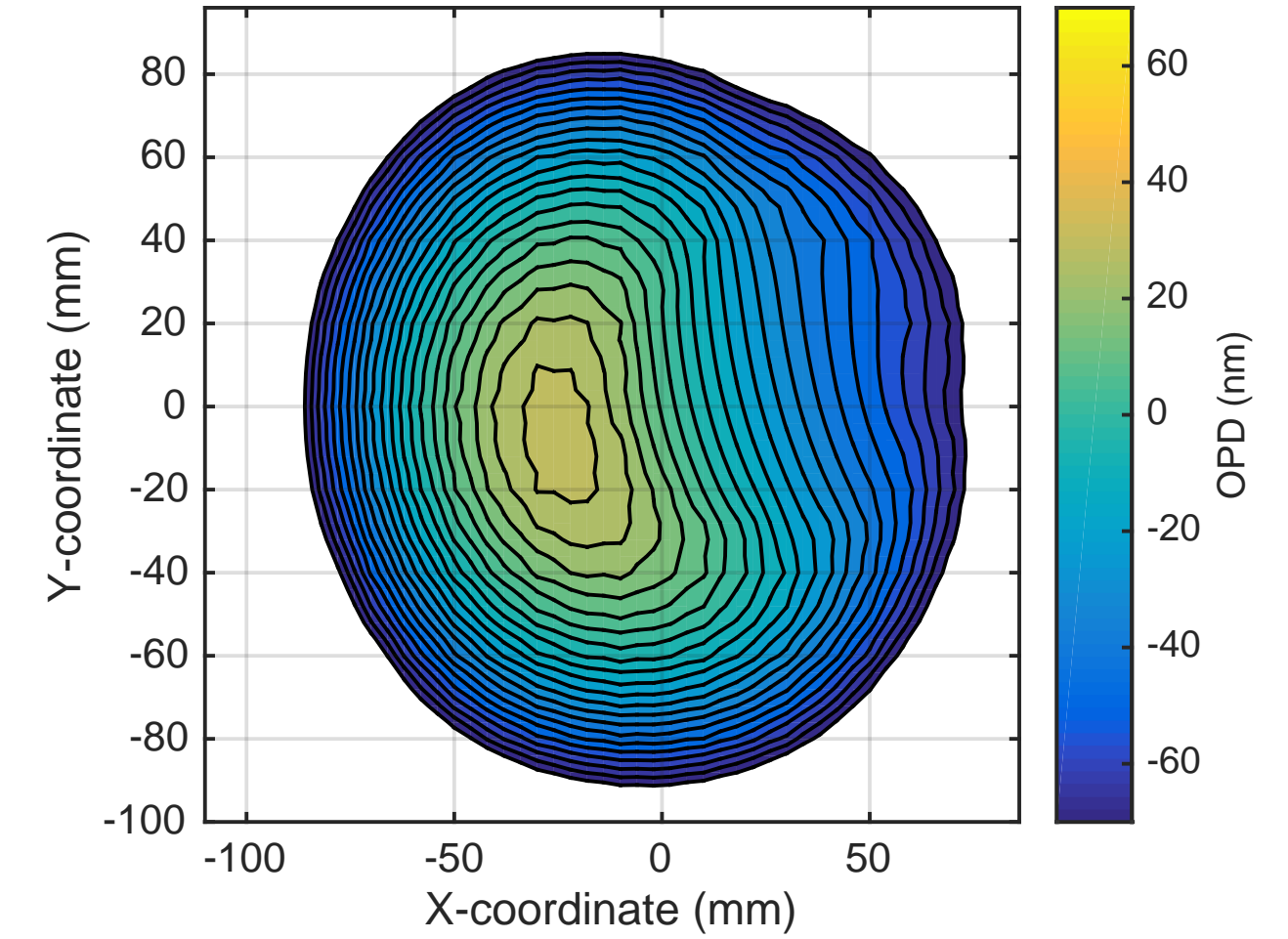
SP OPD: H1ITMY SELF @30W uncorrected. RMS = 25nm



SP OPD now: H1ITMY SELF @30W + RH @0.75W. RMS = 22nm

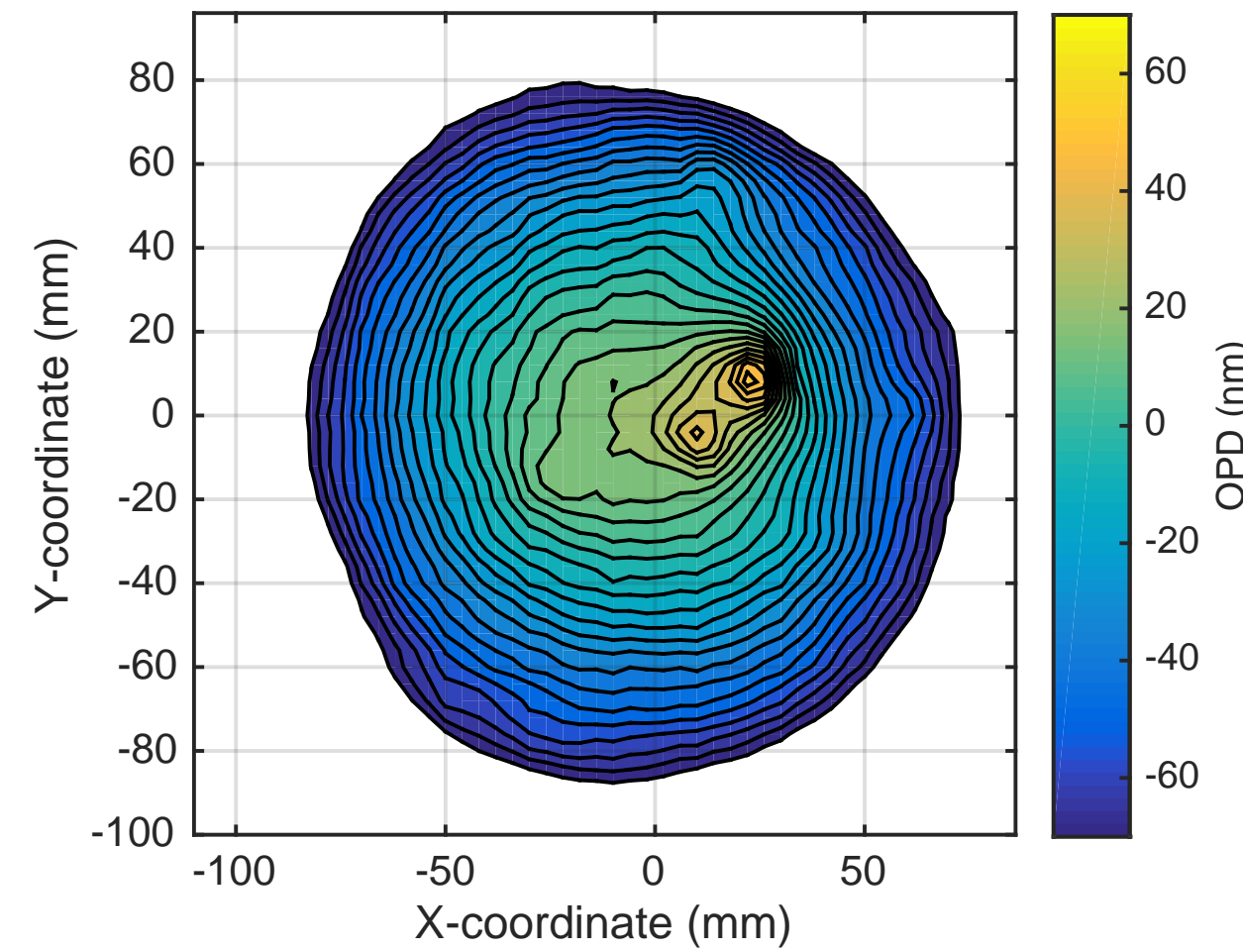


SP OPD CO2 mask: 450mW, RMS = 25nm

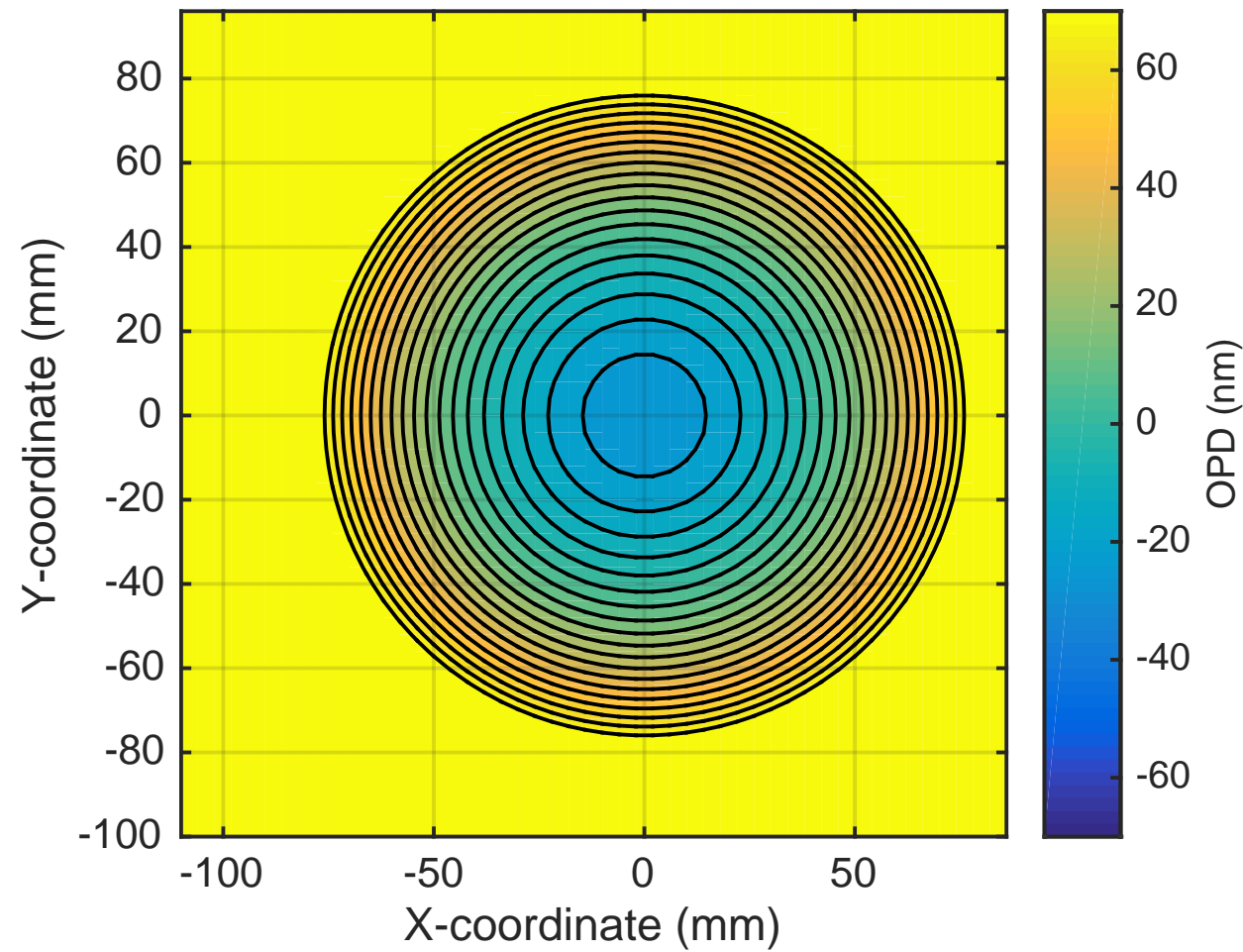


Contour spacing = 5nm

OPD Now + CO2 mask: 450mW, RMS =24nm



Optimum additional RH: 3.6W. RMS = 23nm



OPD Now + CO2 mask: 450mW + RH @ 4.35W total. RMS = 8nm

