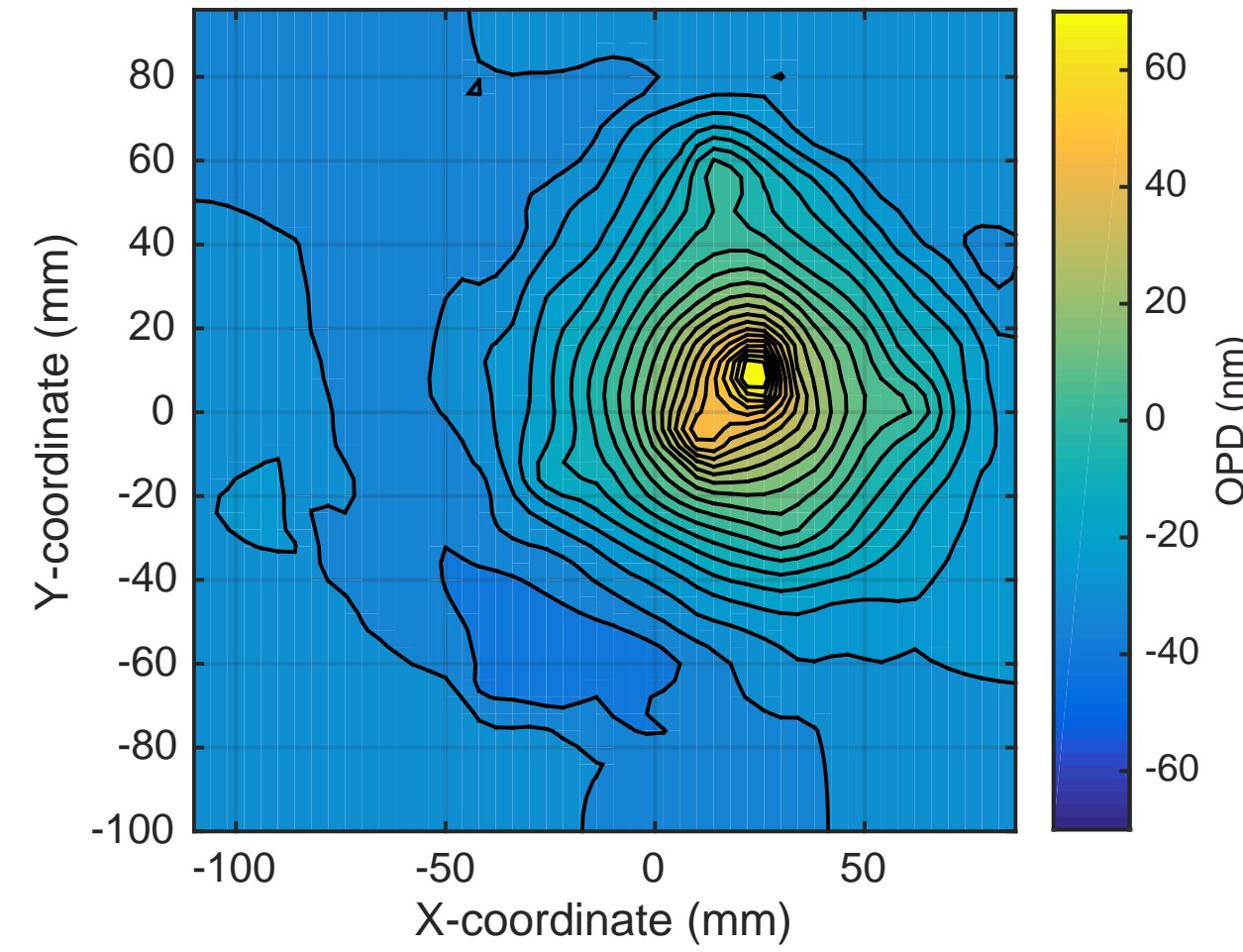
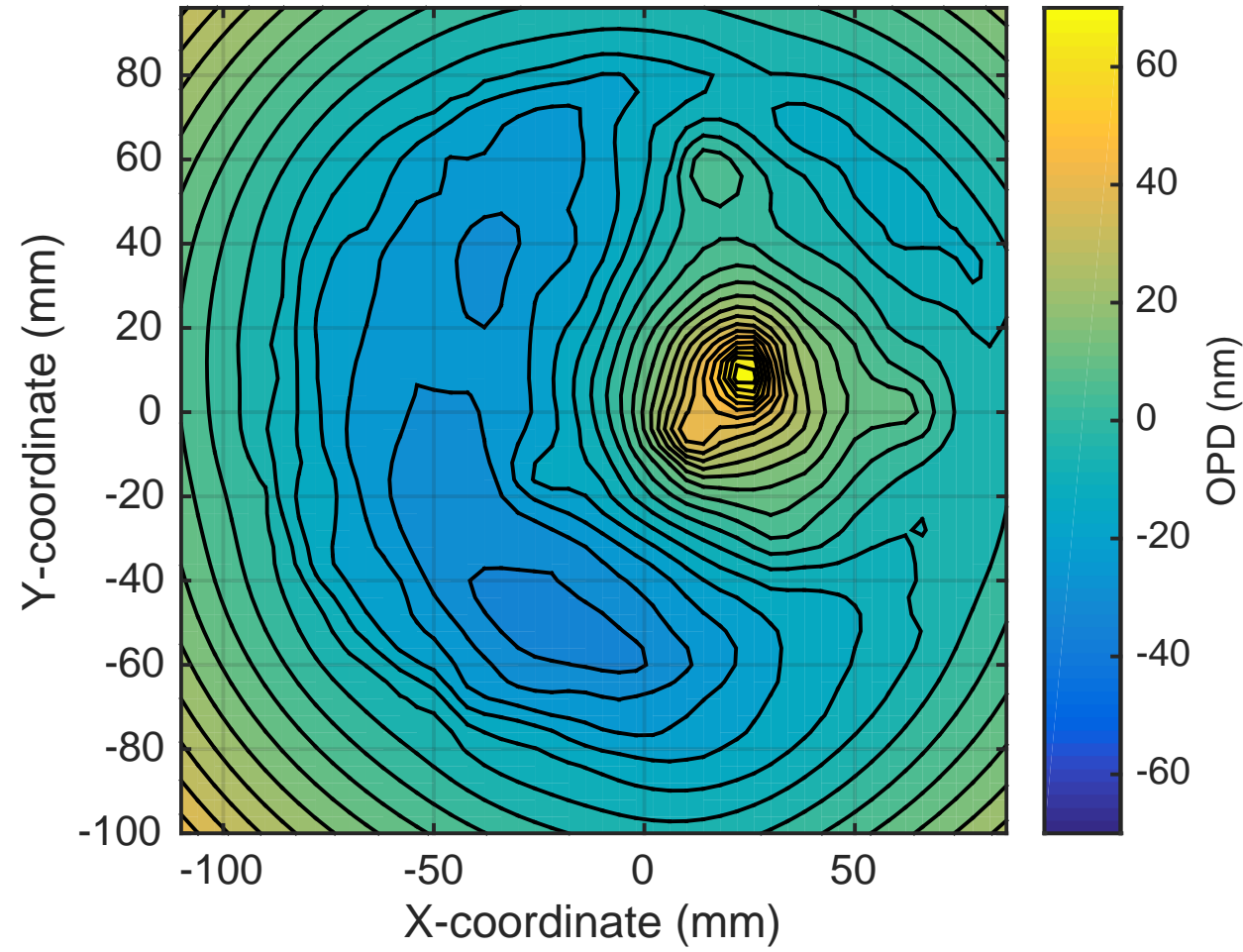


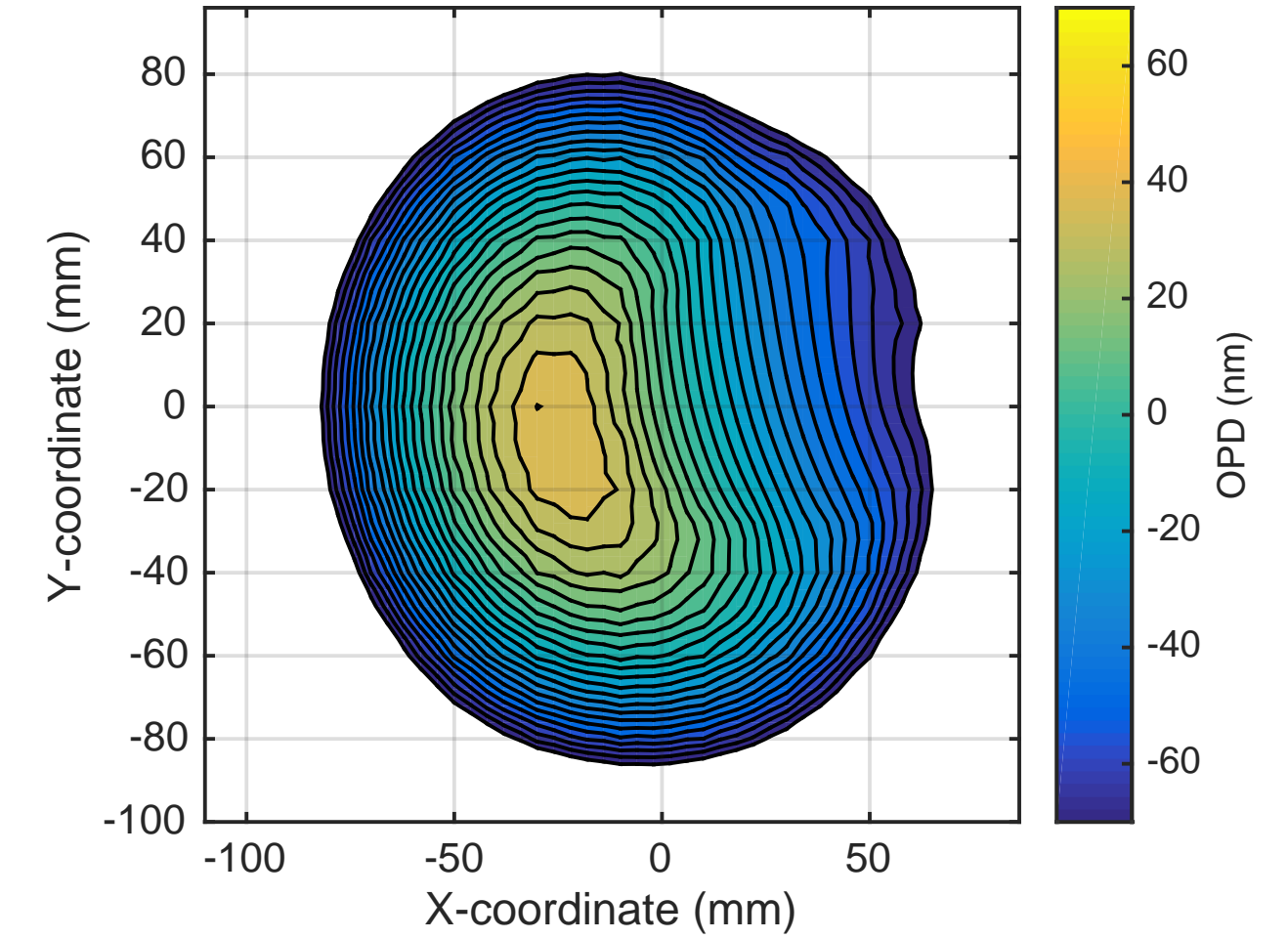
SP OPD: H1ITMY SELF @30W uncorrected. RMS = 25nm



SP OPD now: H1ITMY SELF @30W + RH @0.75W. RMS = 22nm

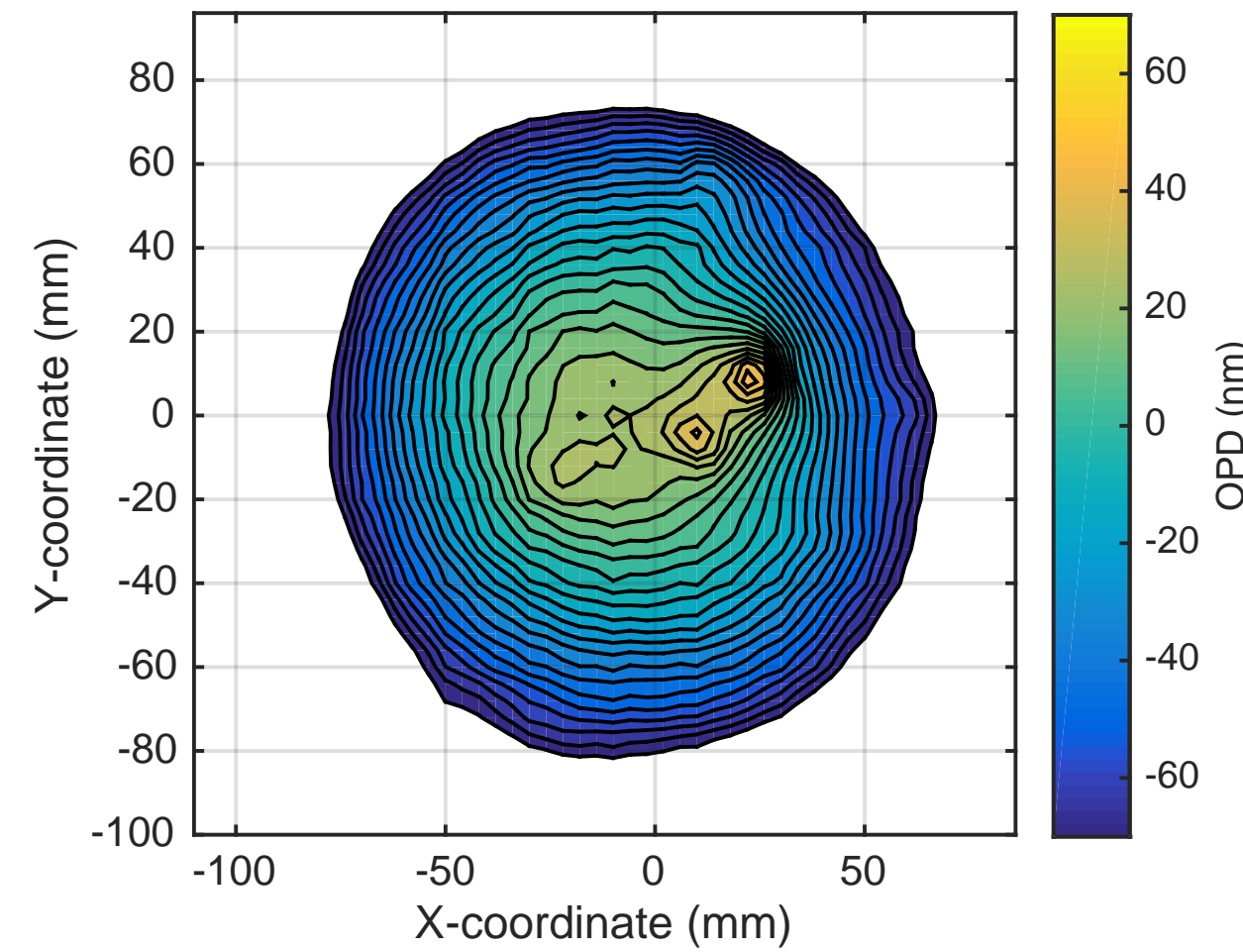


SP OPD CO2 mask: 550mW, RMS = 30nm

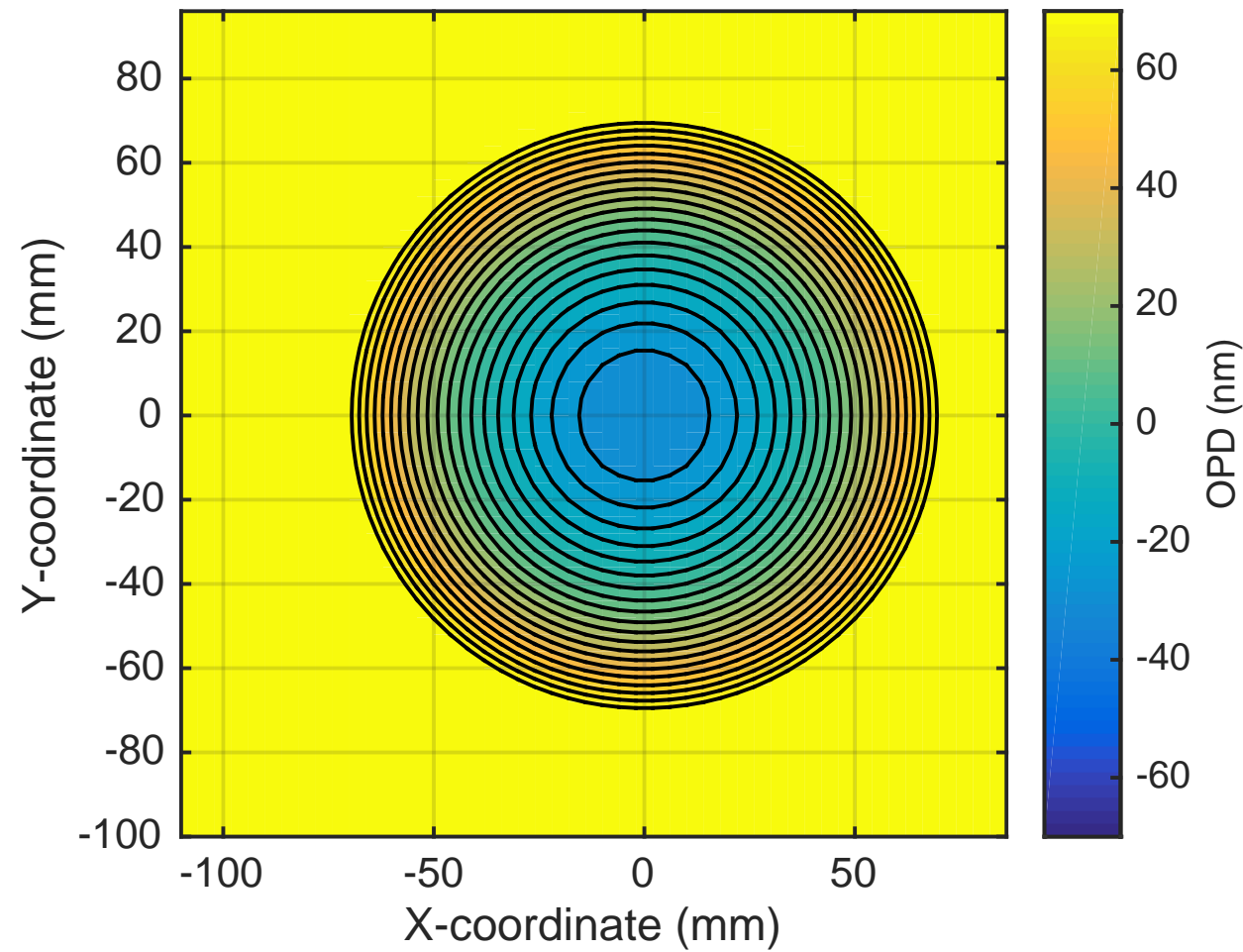


Contour spacing = 5nm

OPD Now + CO2 mask: 550mW, RMS =28nm



Optimum additional RH: 4.6W. RMS = 30nm



OPD Now + CO2 mask: 550mW + RH @ 5.35W total. RMS = 10nm

