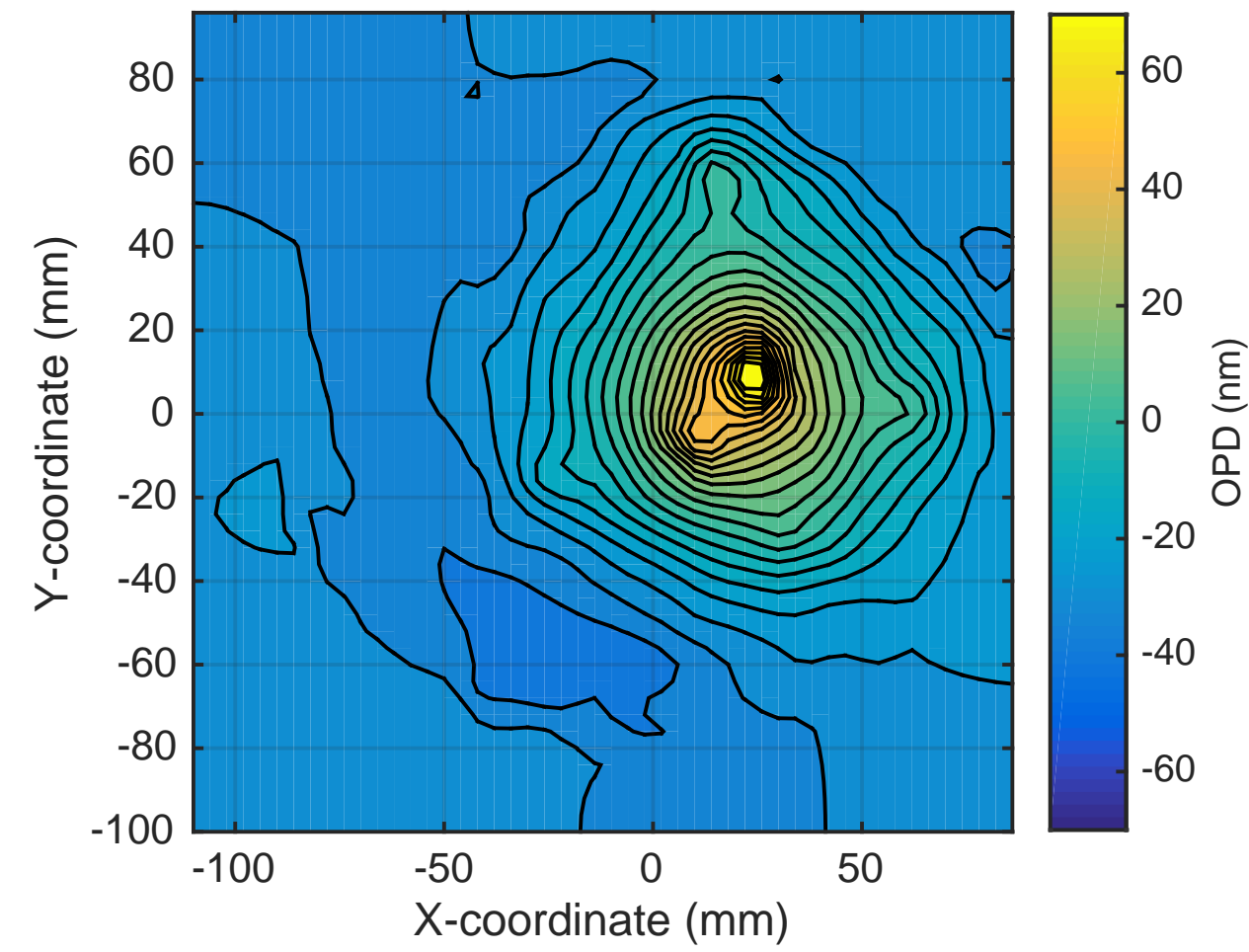
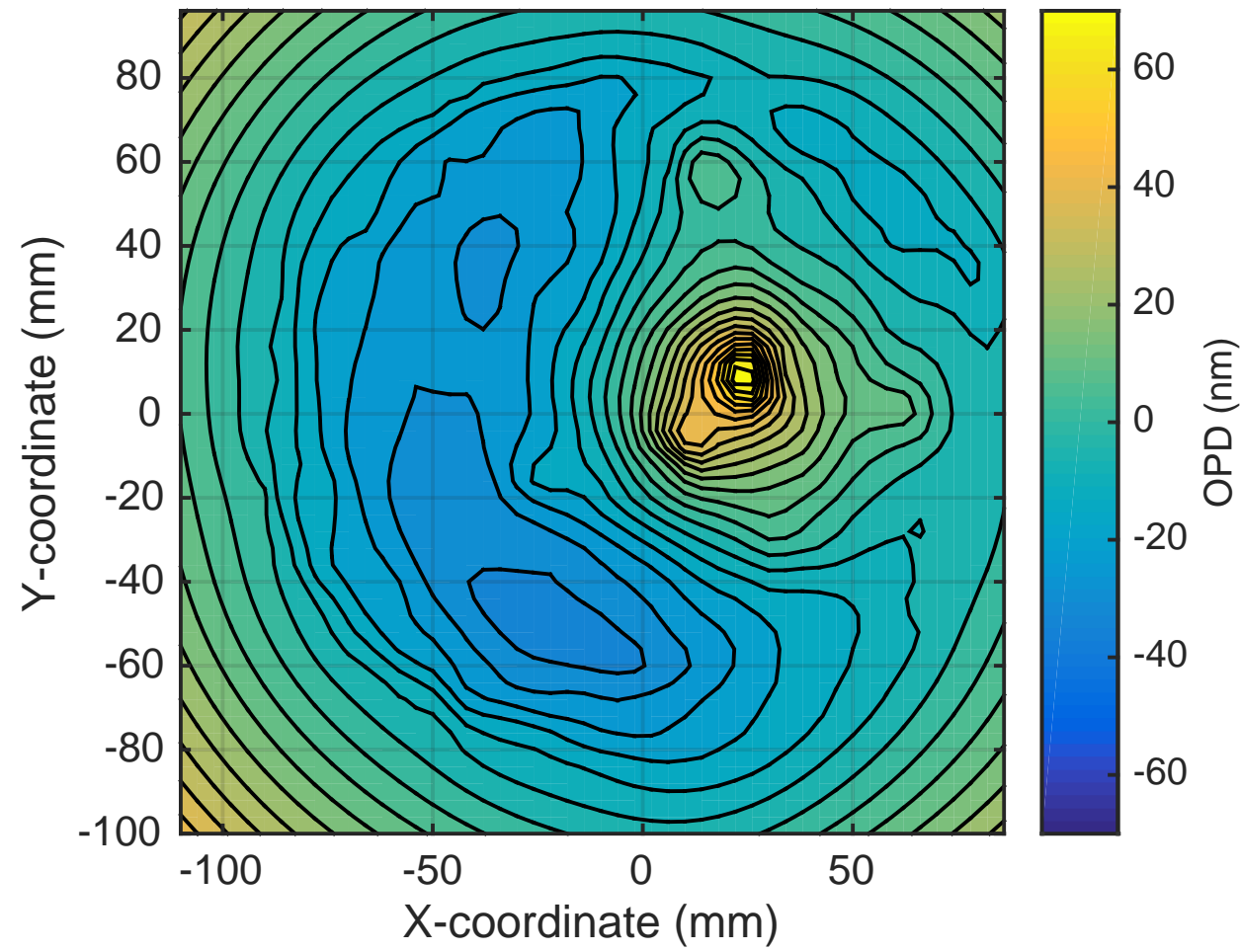


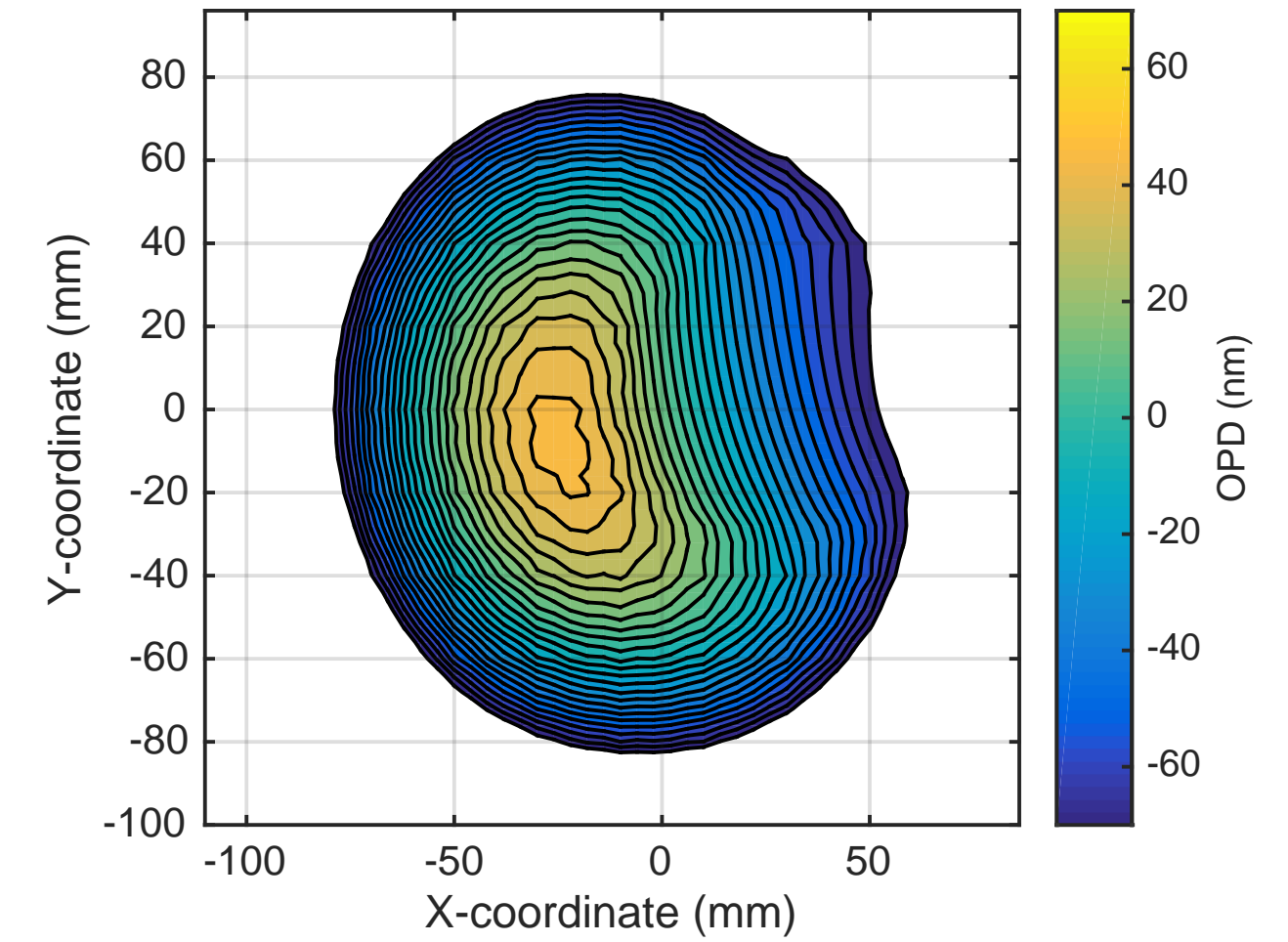
SP OPD: H1ITMY SELF @30W uncorrected. RMS = 25nm



SP OPD now: H1ITMY SELF @30W + RH @0.75W. RMS = 22nm

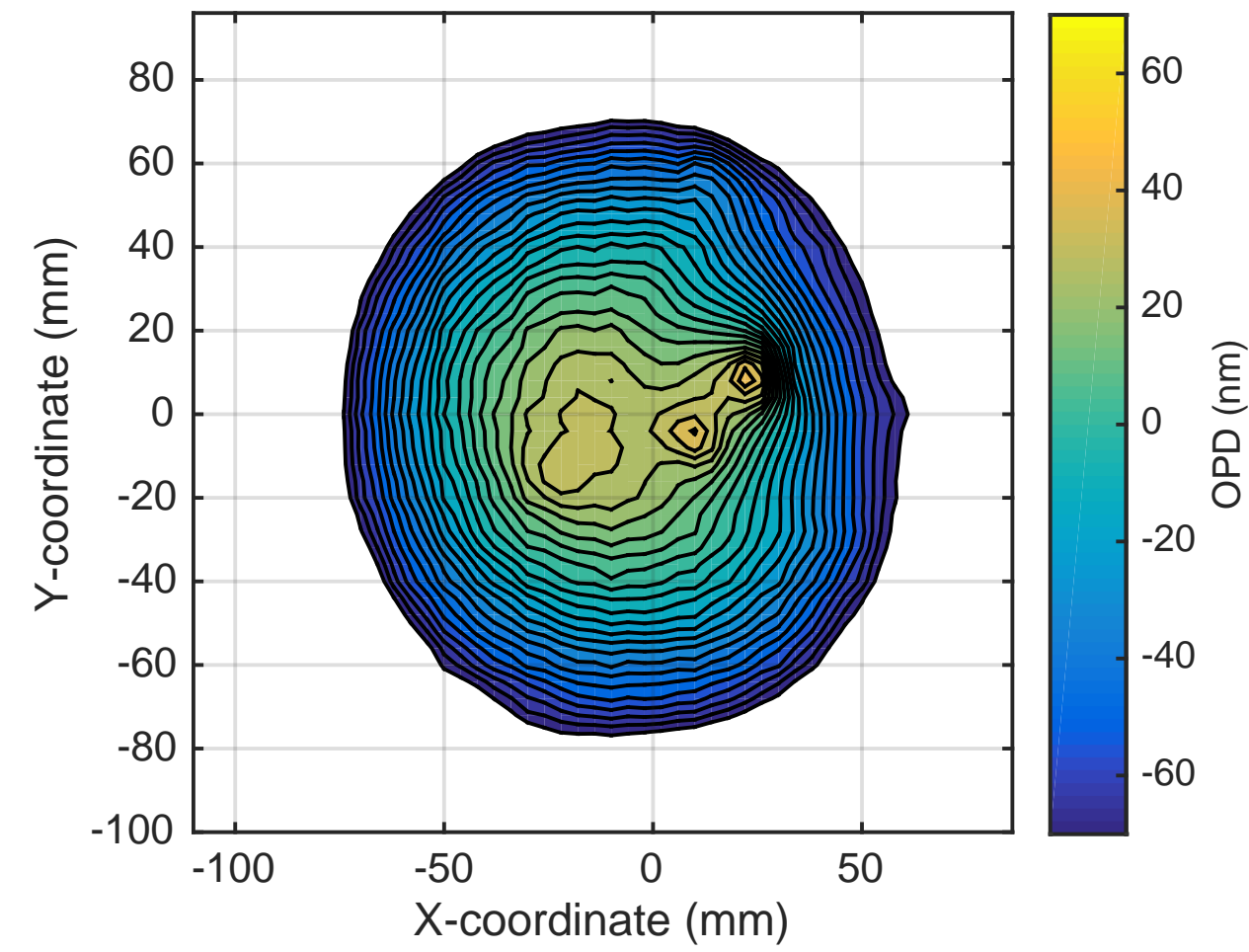


SP OPD CO2 mask: 650mW, RMS = 35nm

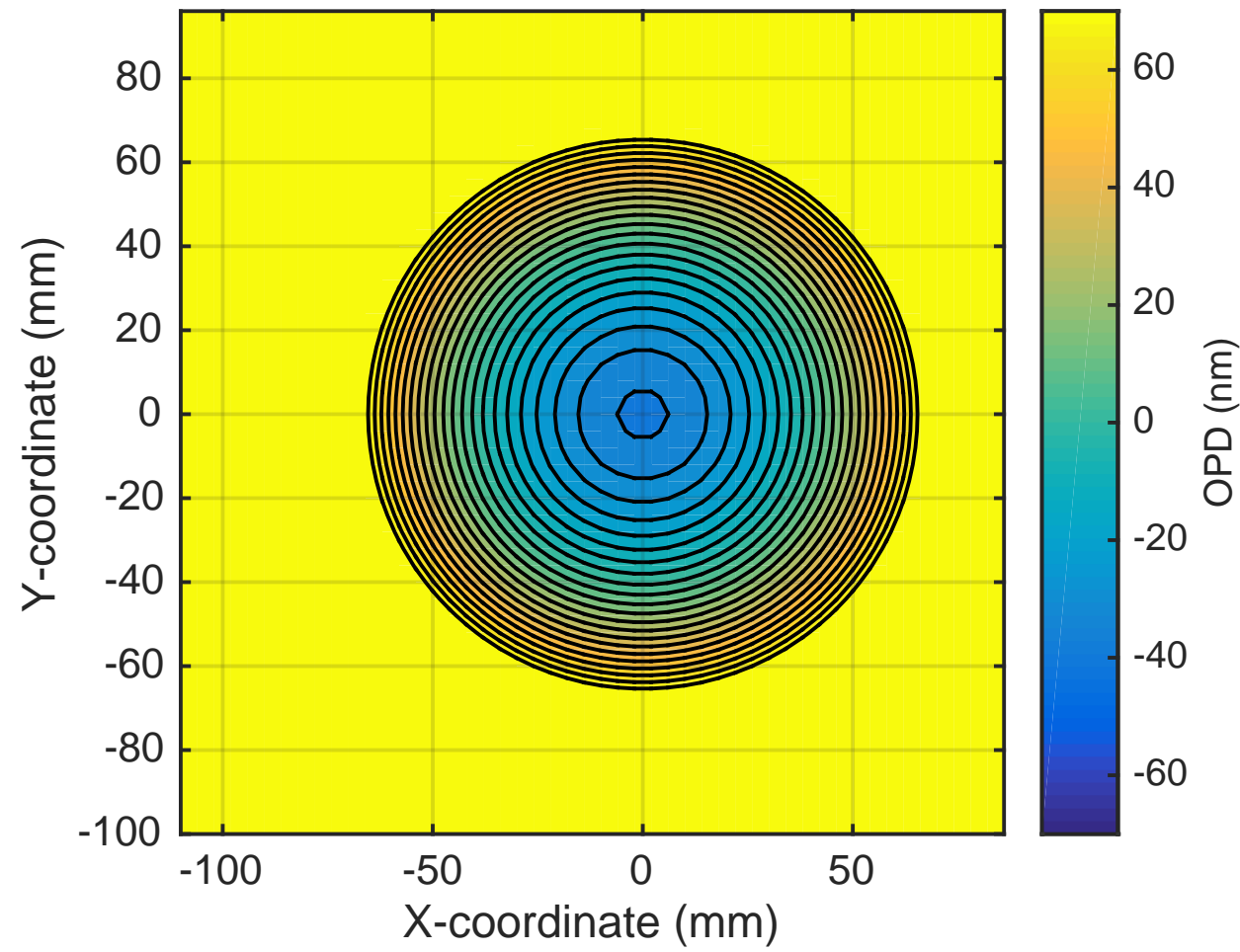


Contour spacing = 5nm

OPD Now + CO2 mask: 650mW, RMS = 32nm



Optimum additional RH: 5.5W. RMS = 36nm



OPD Now + CO2 mask: 650mW + RH @ 6.25W total. RMS = 14nm

