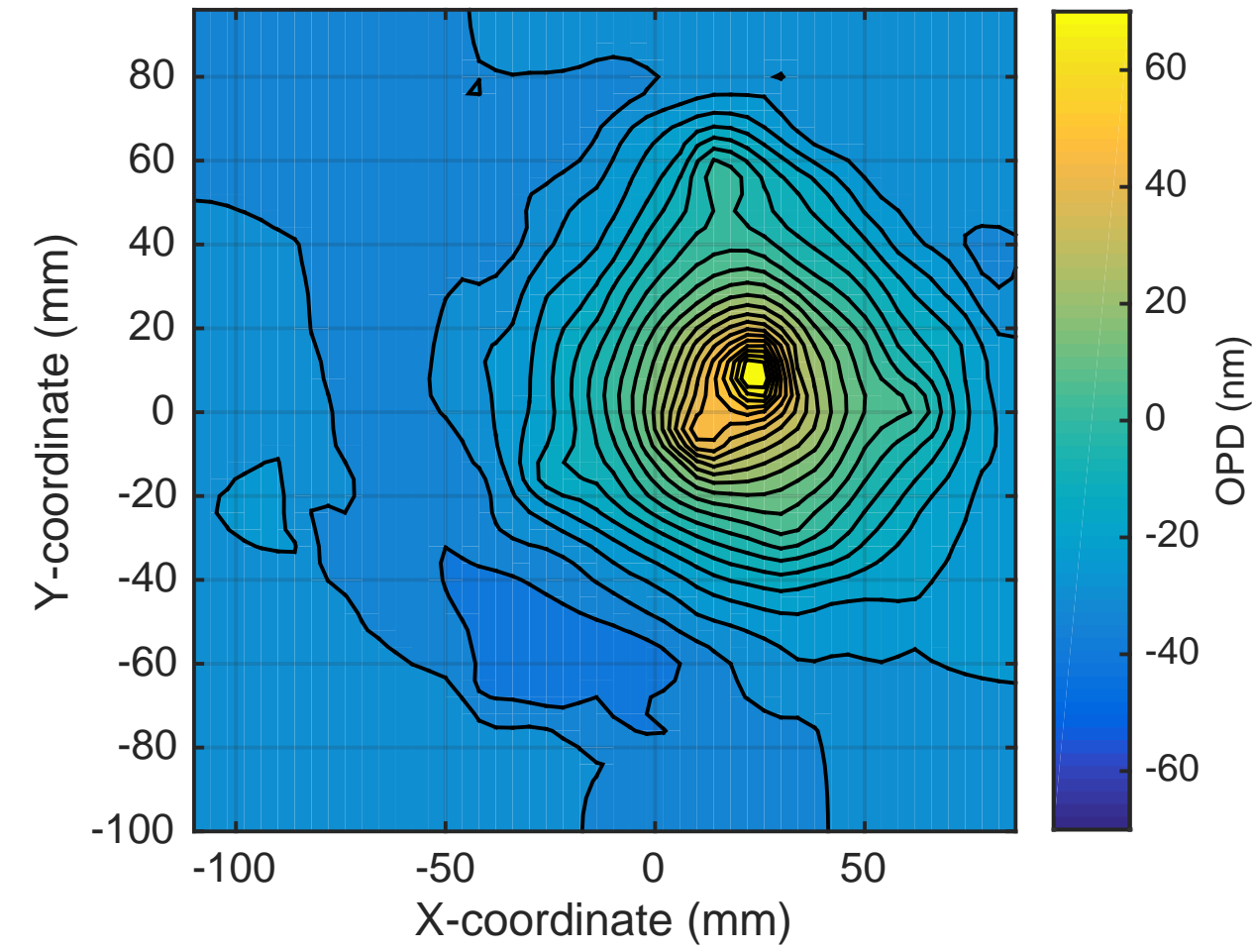
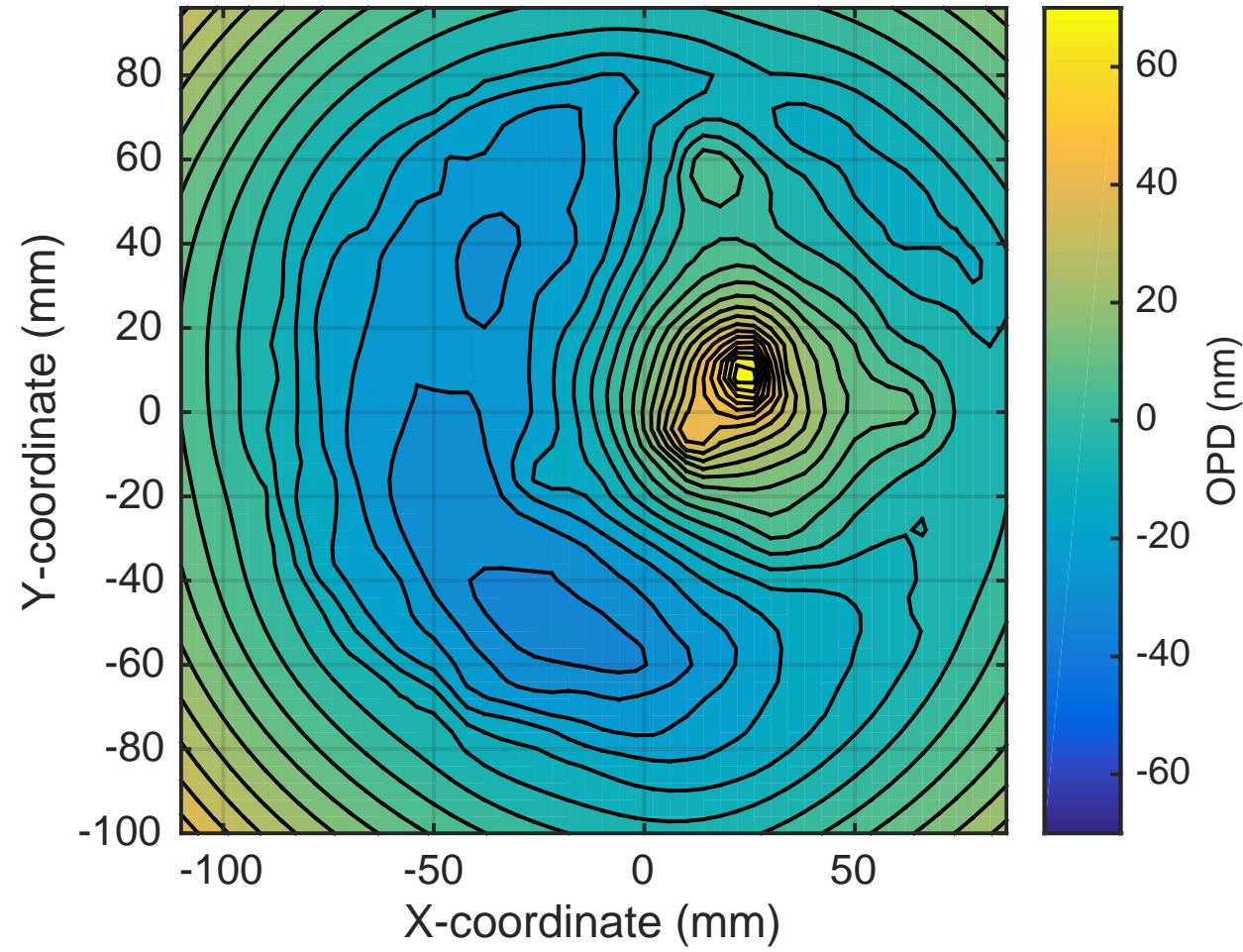


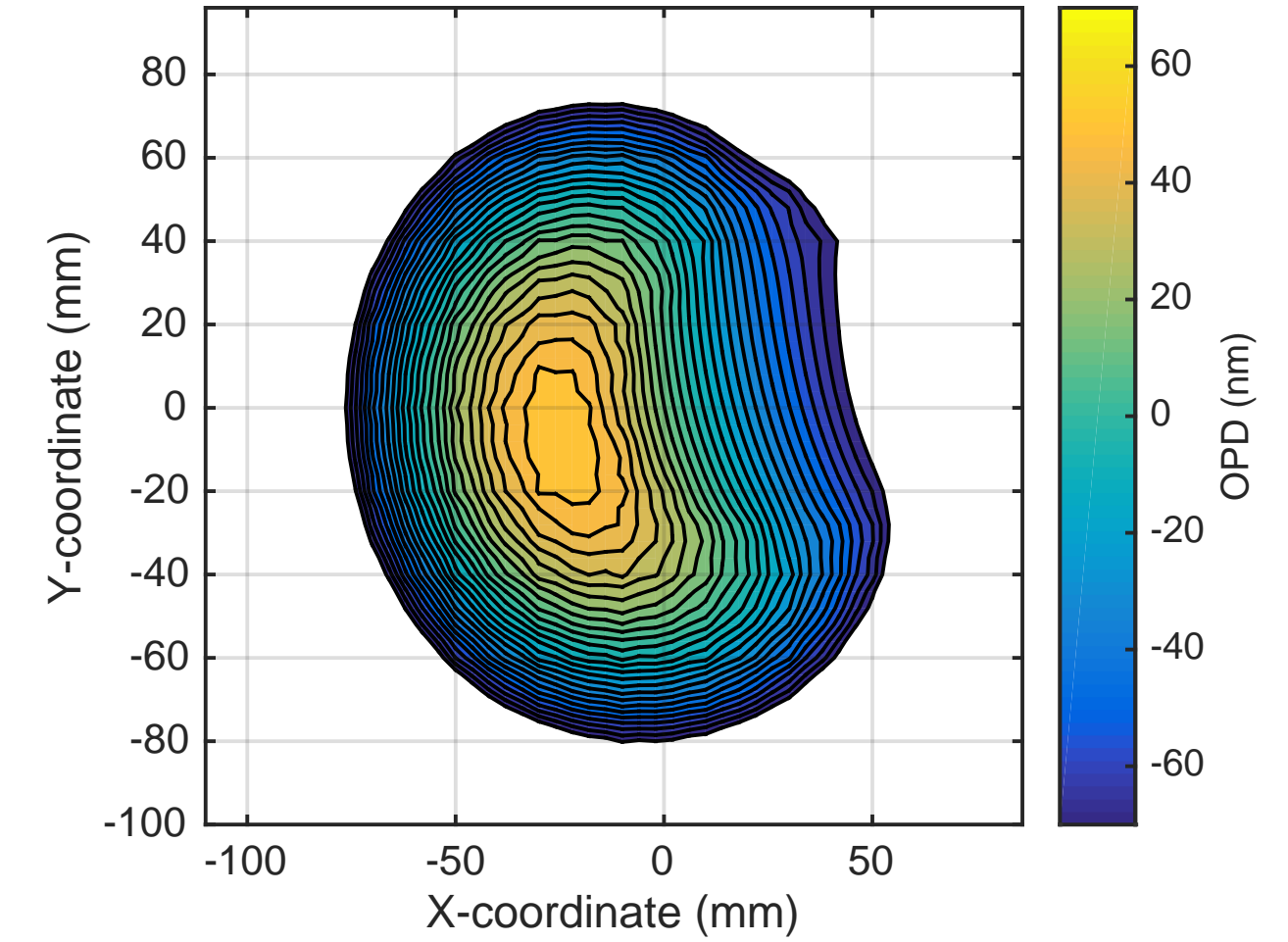
SP OPD: H1ITMY SELF @30W uncorrected. RMS = 25nm



SP OPD now: H1ITMY SELF @30W + RH @0.75W. RMS = 22nm

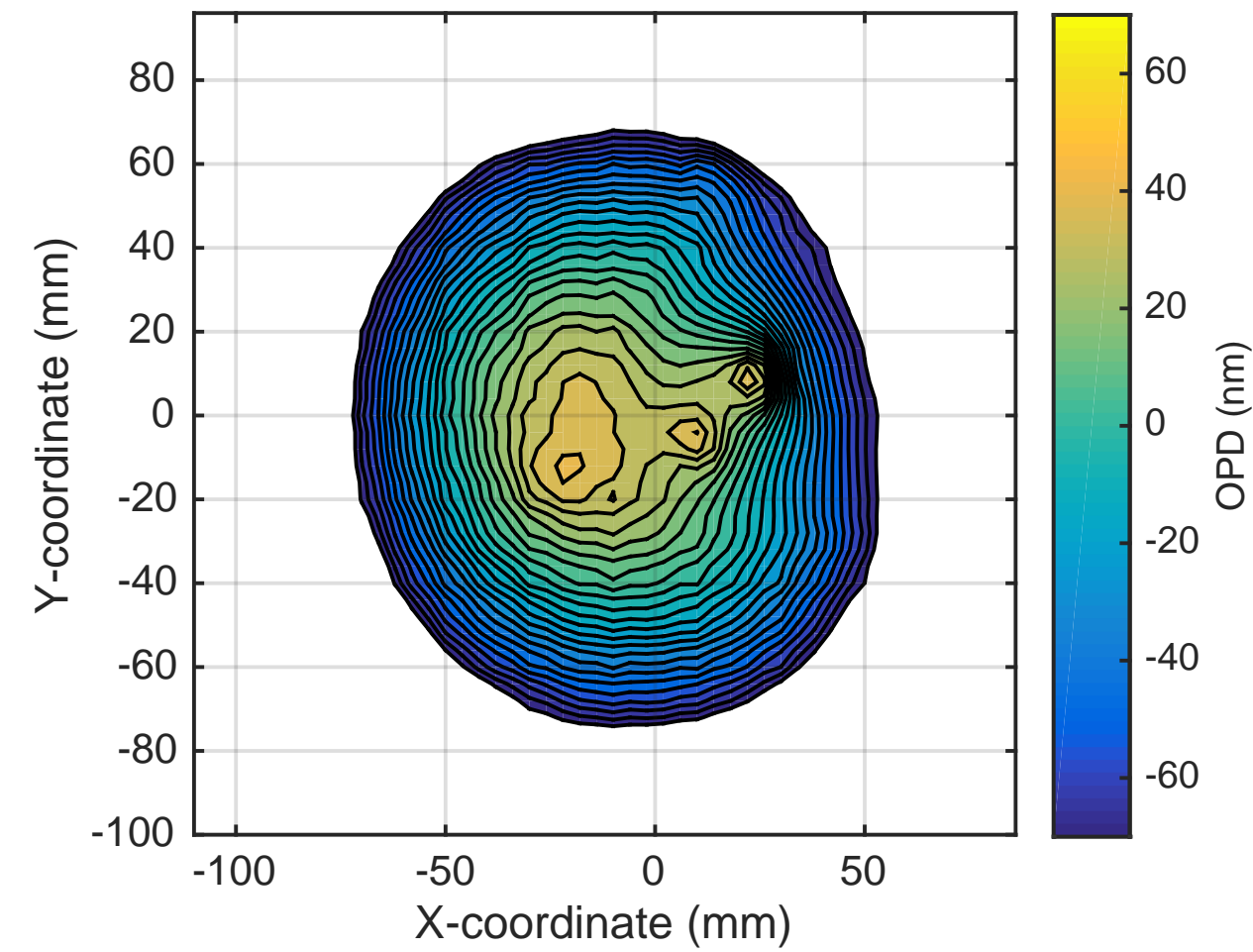


SP OPD CO2 mask: 750mW, RMS = 41nm

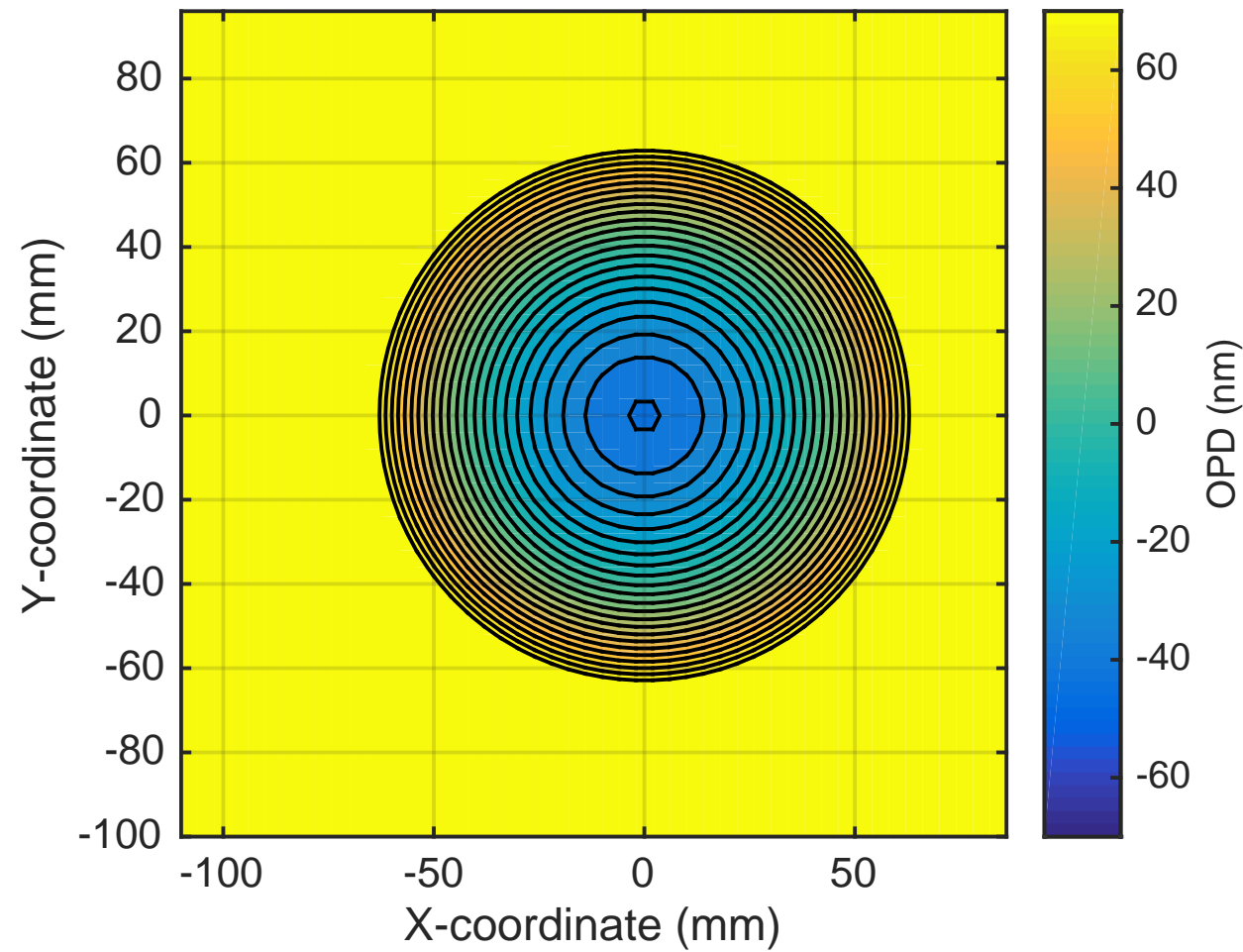


Contour spacing = 5nm

OPD Now + CO2 mask: 750mW, RMS =37nm



Optimum additional RH: 6.2W. RMS = 40nm



OPD Now + CO2 mask: 750mW + RH @ 6.95W total. RMS = 18nm

