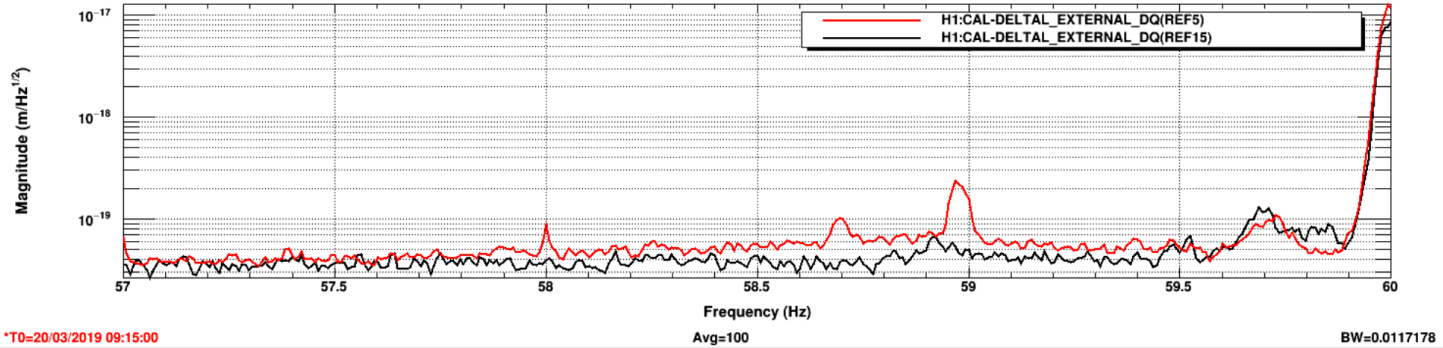
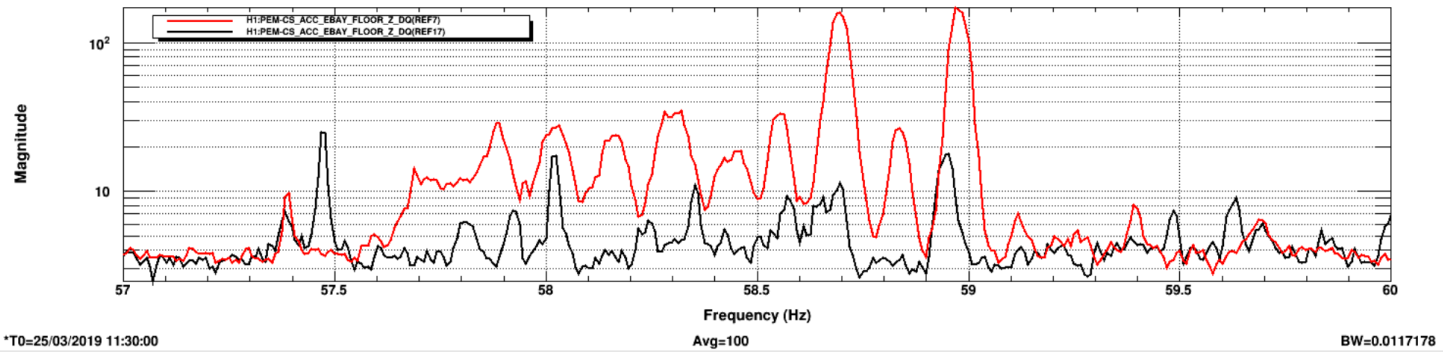


Reduction in DARM peaks around 59 in long term spectra. These are on different days – on the next page is a single lock manipulation sequence that shows that peak reduction was a consequence of the damping.

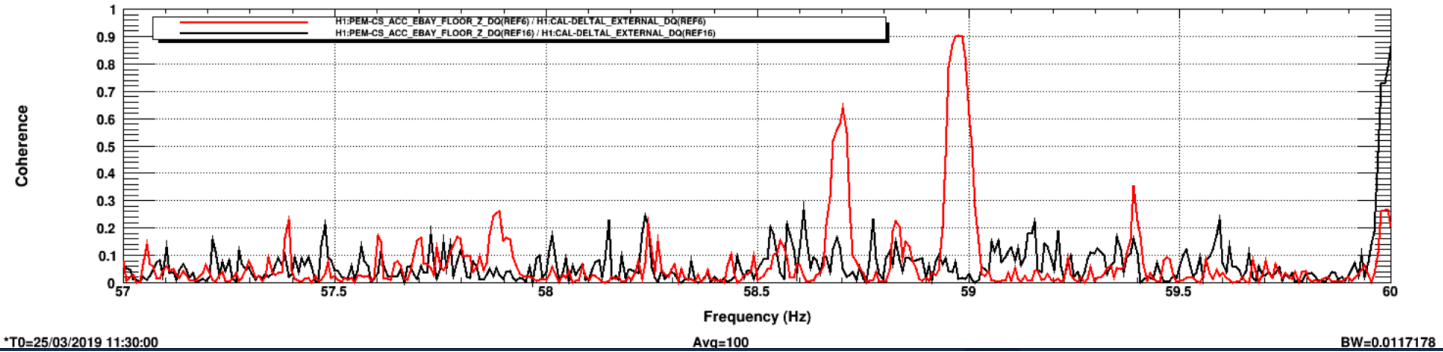
Power spectrum



Power spectrum

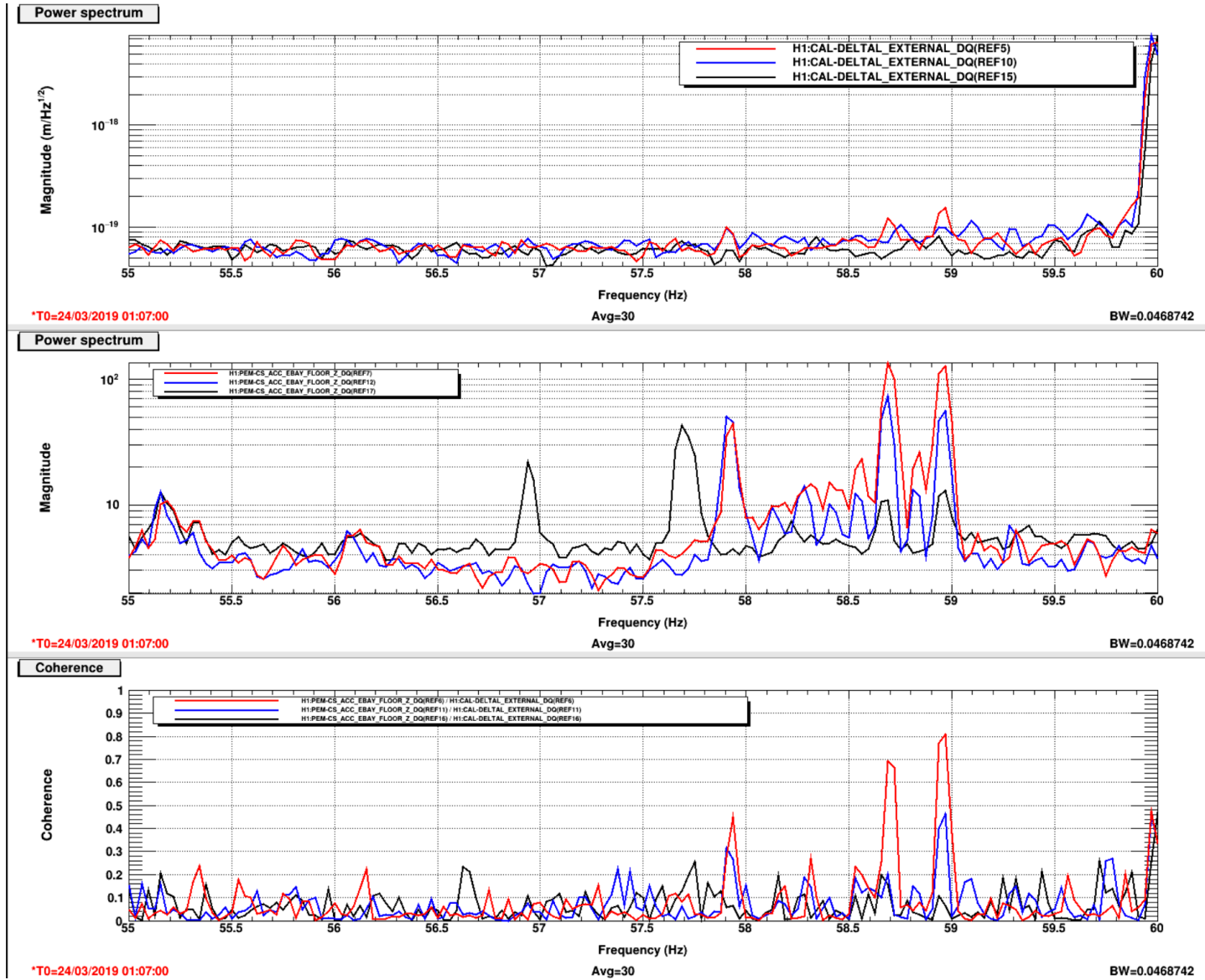


Coherence

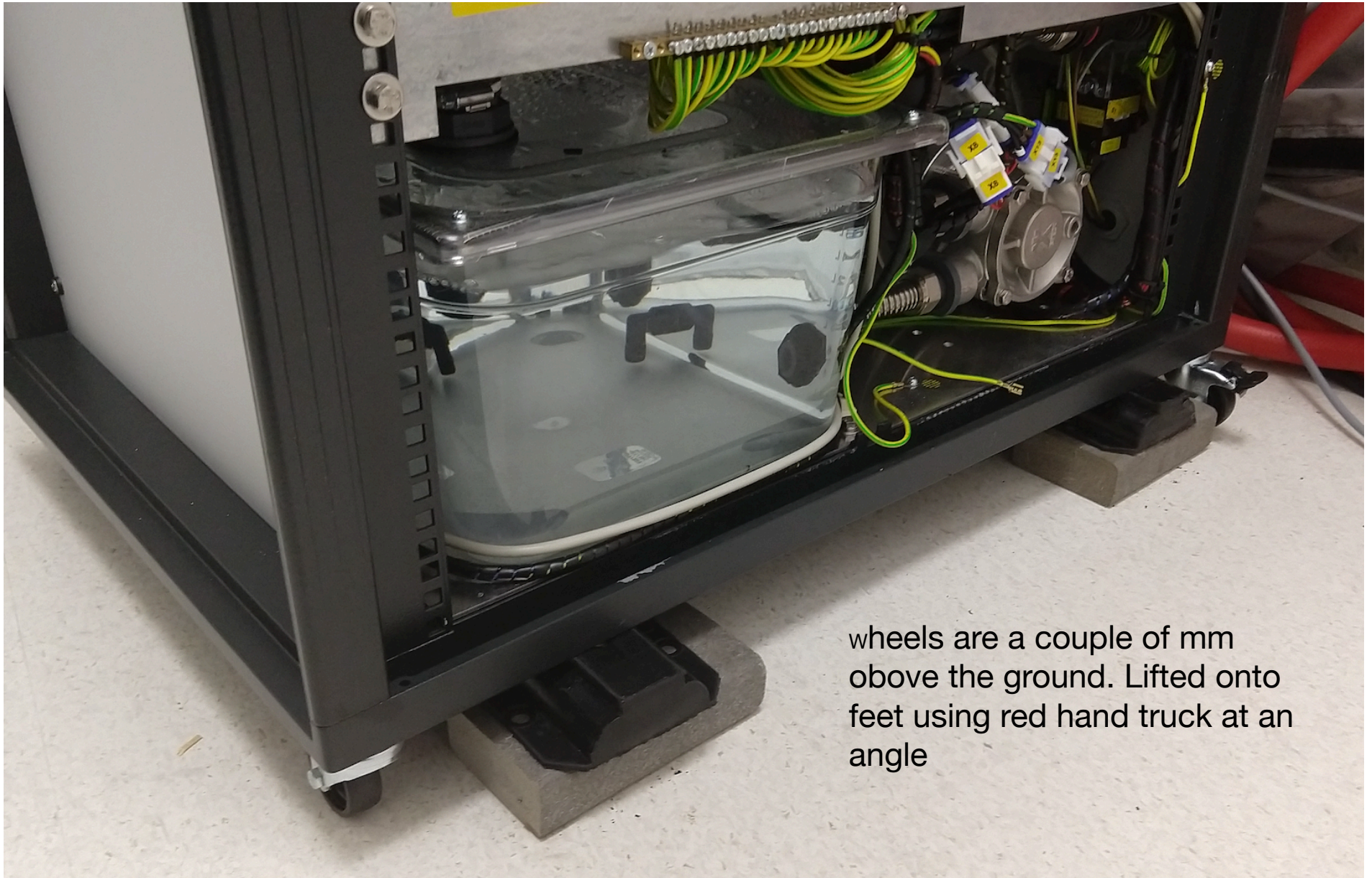


Single lock manipulation of chiller: RED: wheels, BLUE: rubber matt, BLACK: rubber springs

Factor of ten reduction of chiller peaks measured by floor accelerometer (RED to BLACK)







wheels are a couple of mm above the ground. Lifted onto feet using red hand truck at an angle