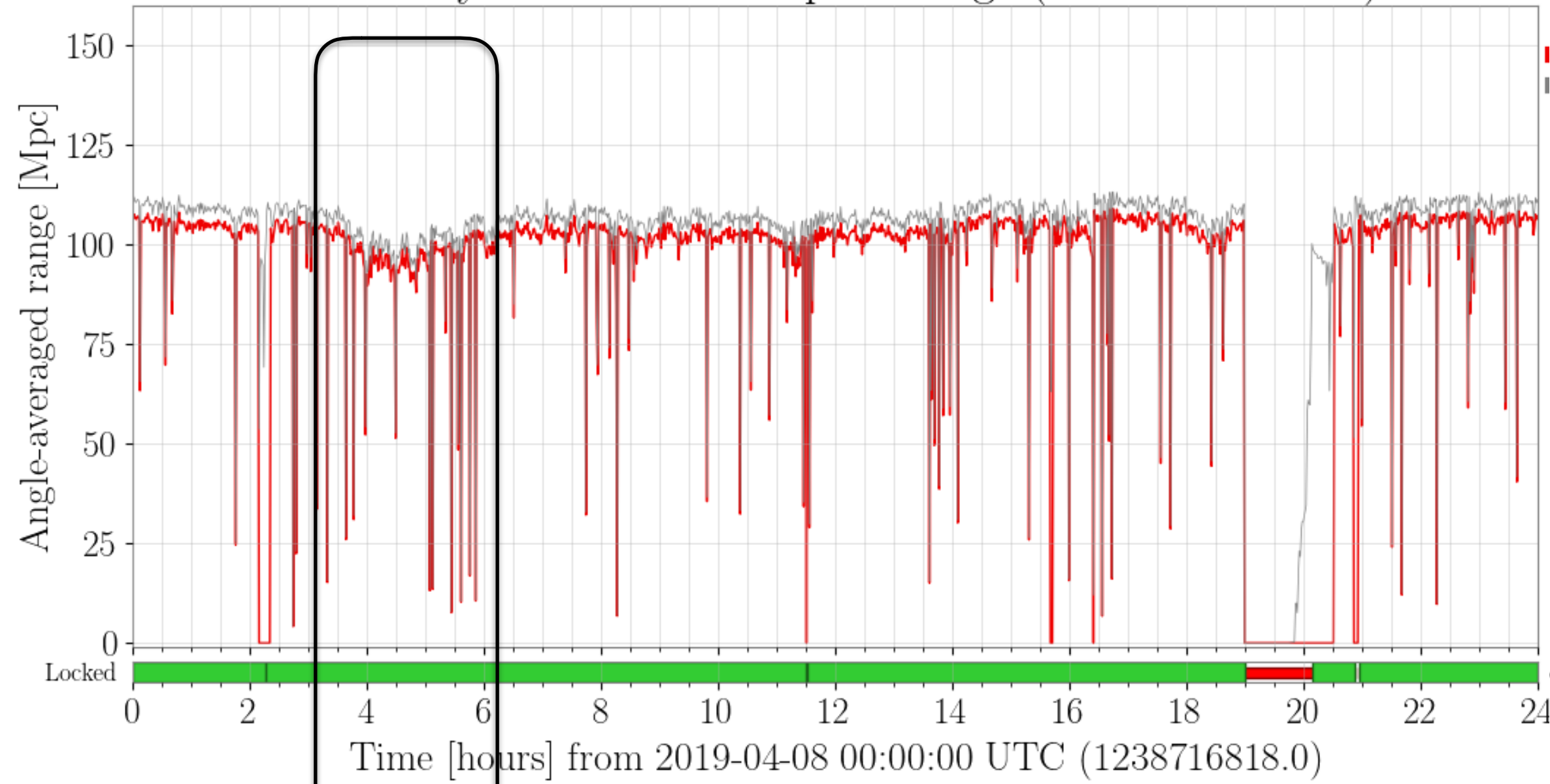


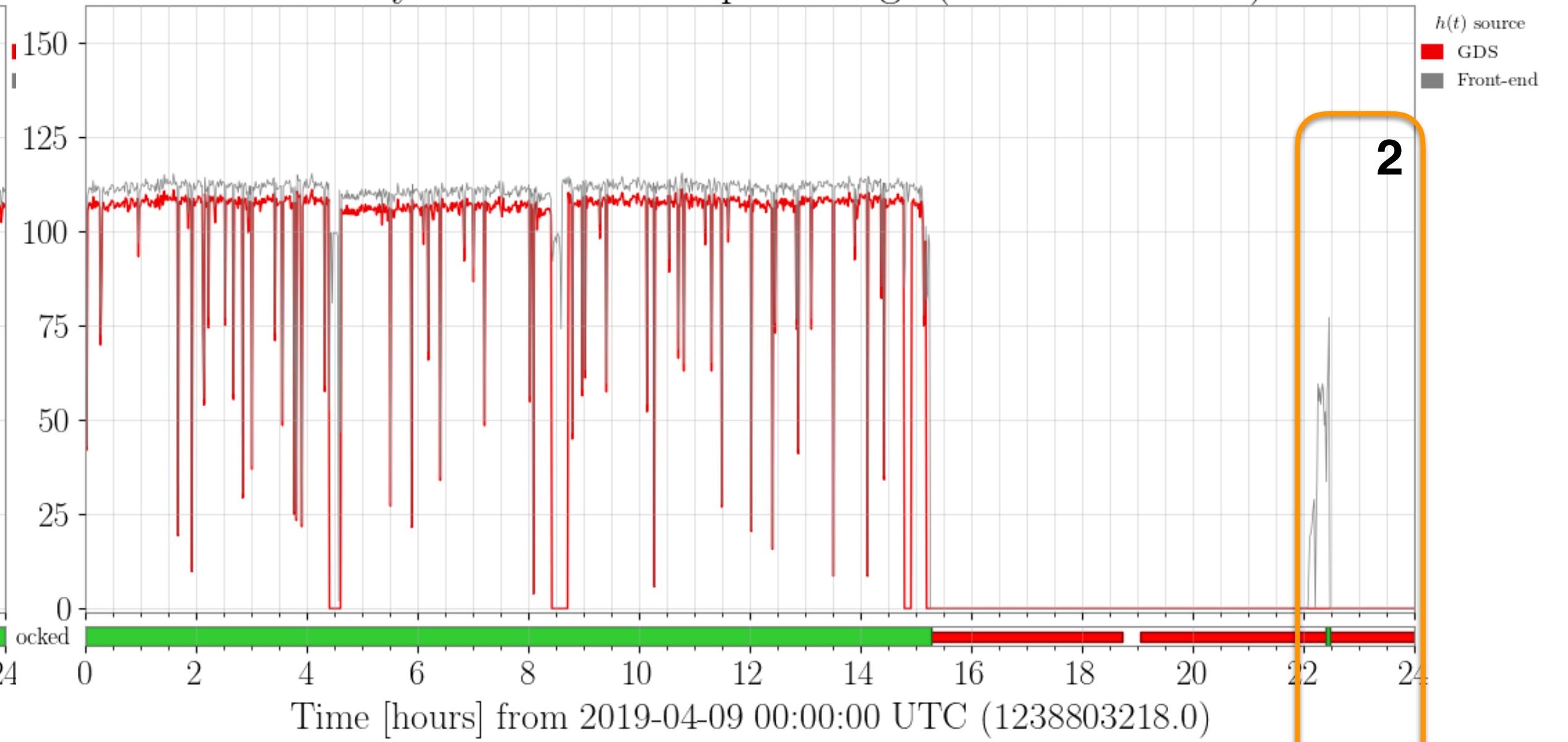
- Check the DetChar Summaries for wind speed & range for LHO.
- Pick days where the wind was > 10 meters/sec, and there seemed to be some impact on the range. This is not a real study, but there is a clear indication that wind is a problem in O3.
- Black outlines are for range drops which seem correlated with wind
- Orange outlines are when the detector operation seems compromised by the wind.
- There are at least 15 days from the first 61 days of O3 where we see issues.

April 8 April 9

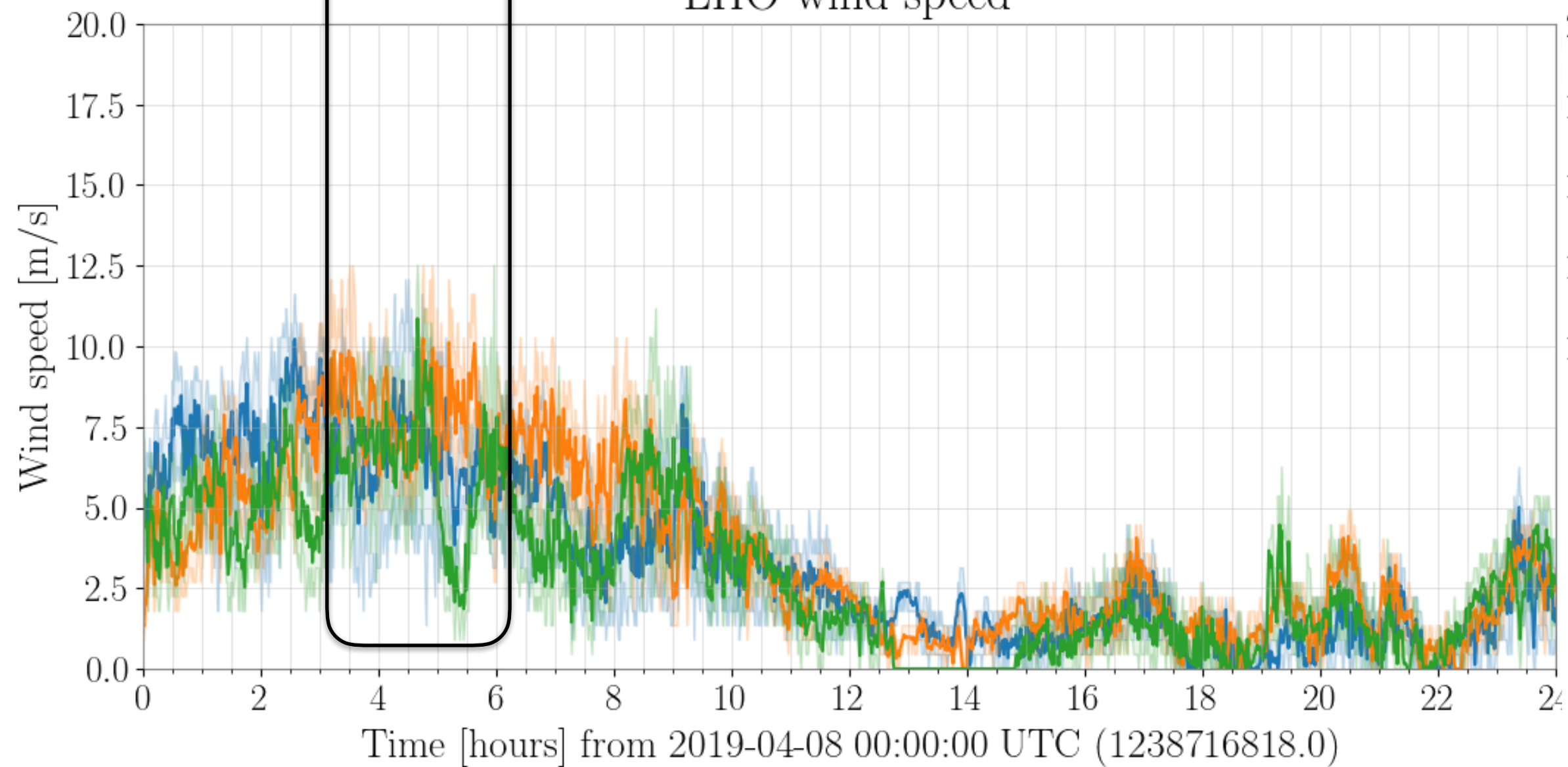
H1 binary neutron star inspiral range (DMT SenseMon)



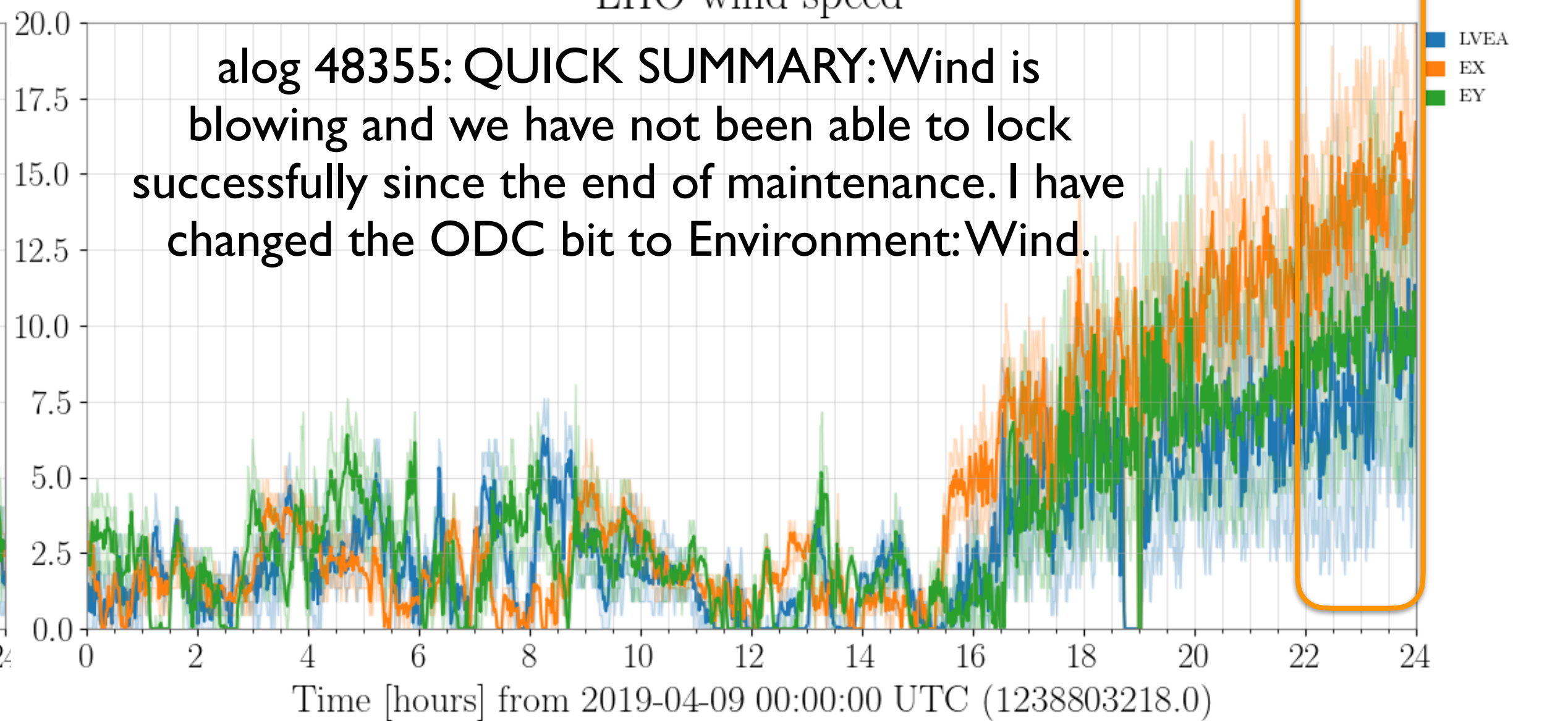
H1 binary neutron star inspiral range (DMT SenseMon)



LHO wind speed



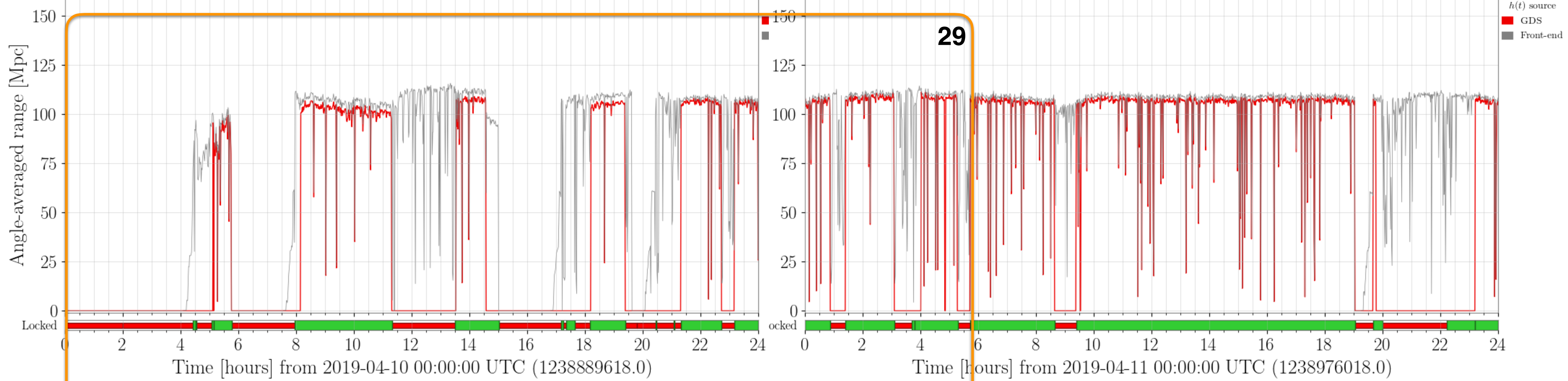
LHO wind speed



April 10 April 11

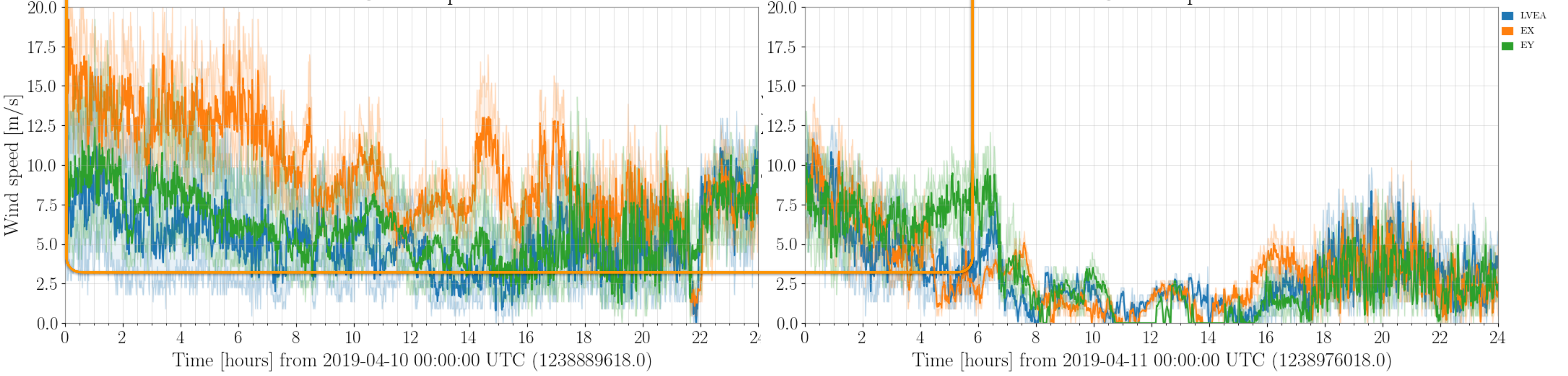
H1 binary neutron star inspiral range (DMT SenseMon)

H1 binary neutron star inspiral range (DMT SenseMon)



LHO wind speed

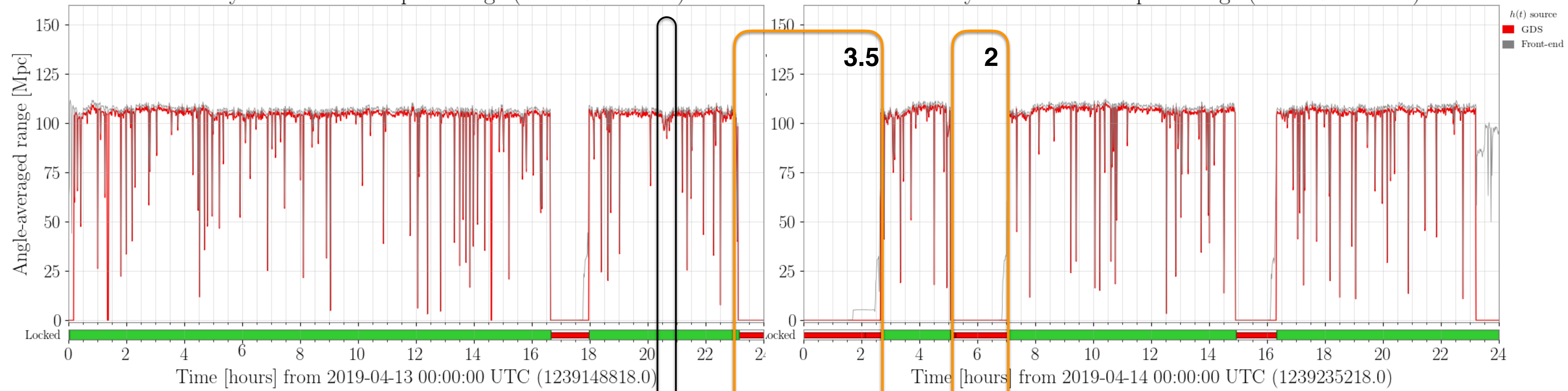
LHO wind speed



April 13 April 14

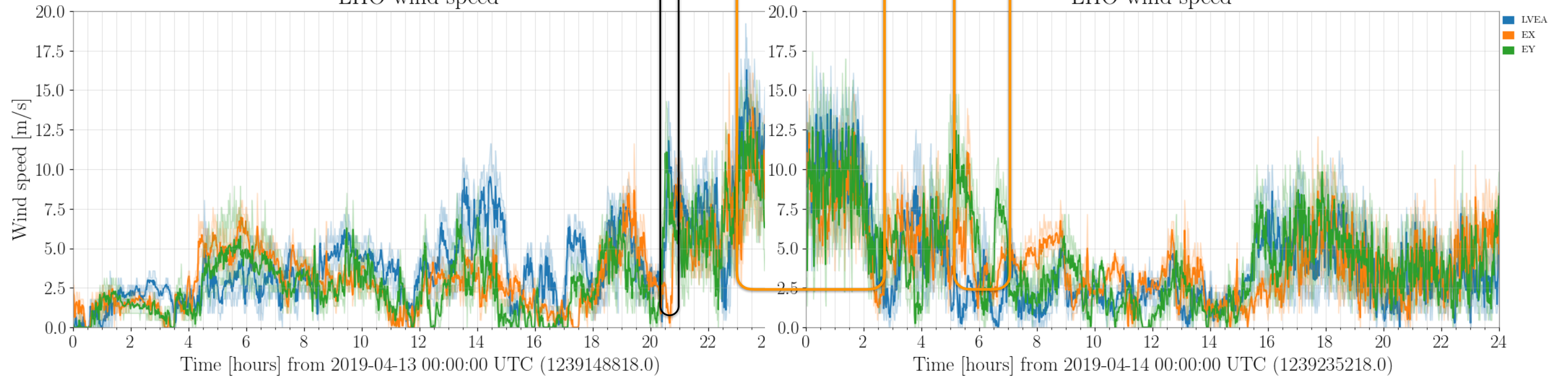
H1 binary neutron star inspiral range (DMT SenseMon)

H1 binary neutron star inspiral range (DMT SenseMon)



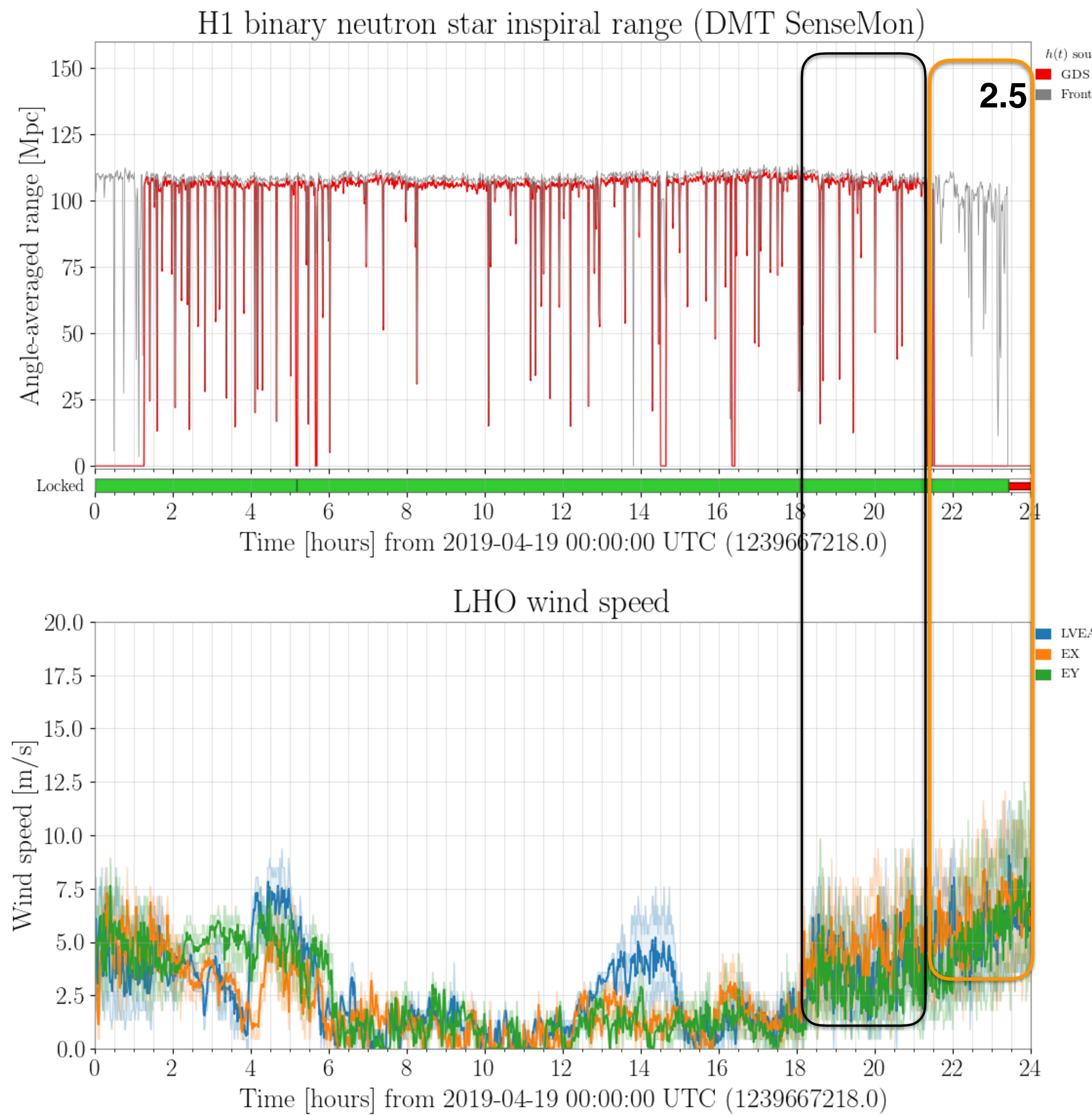
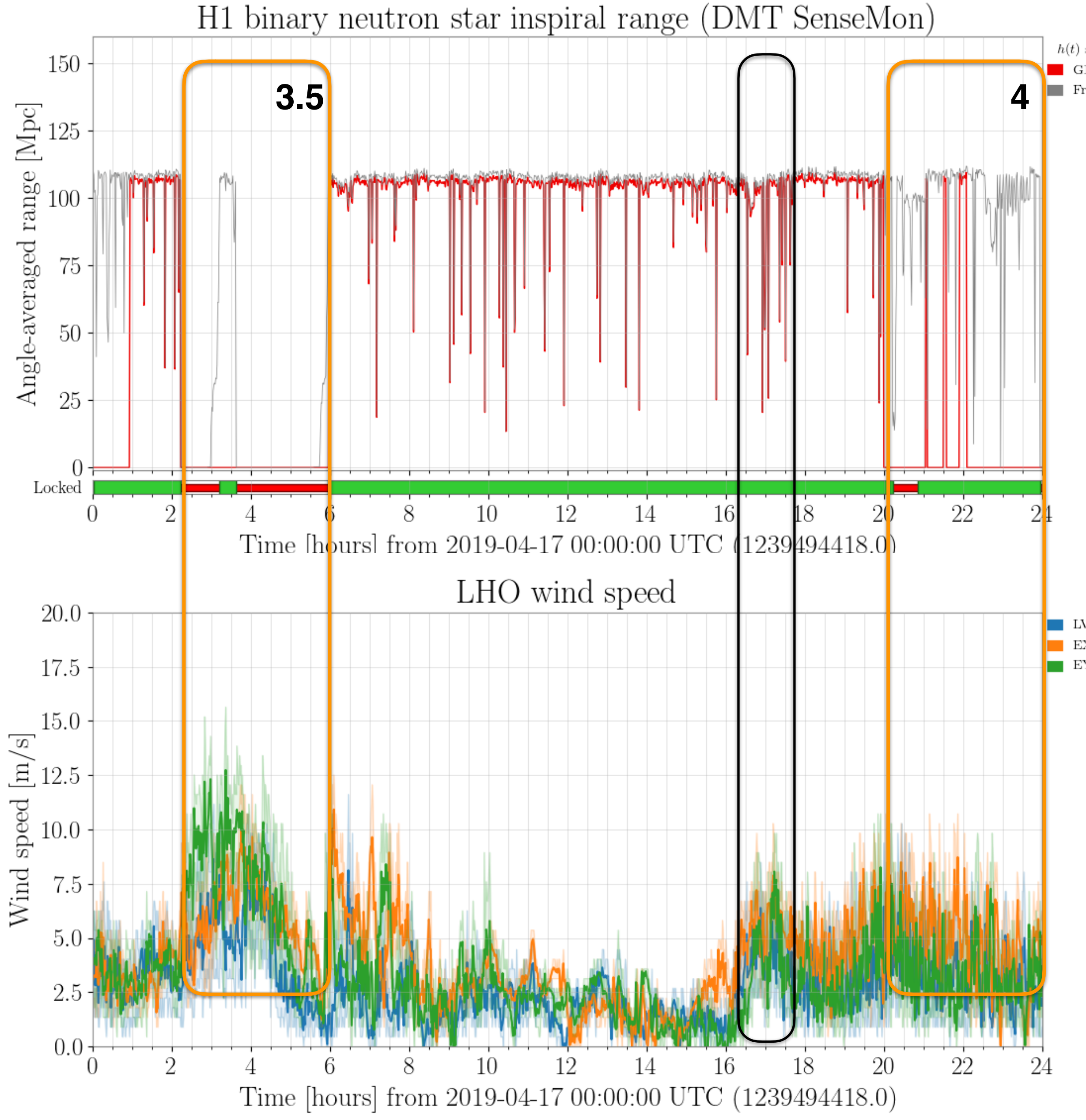
LHO wind speed

LHO wind speed



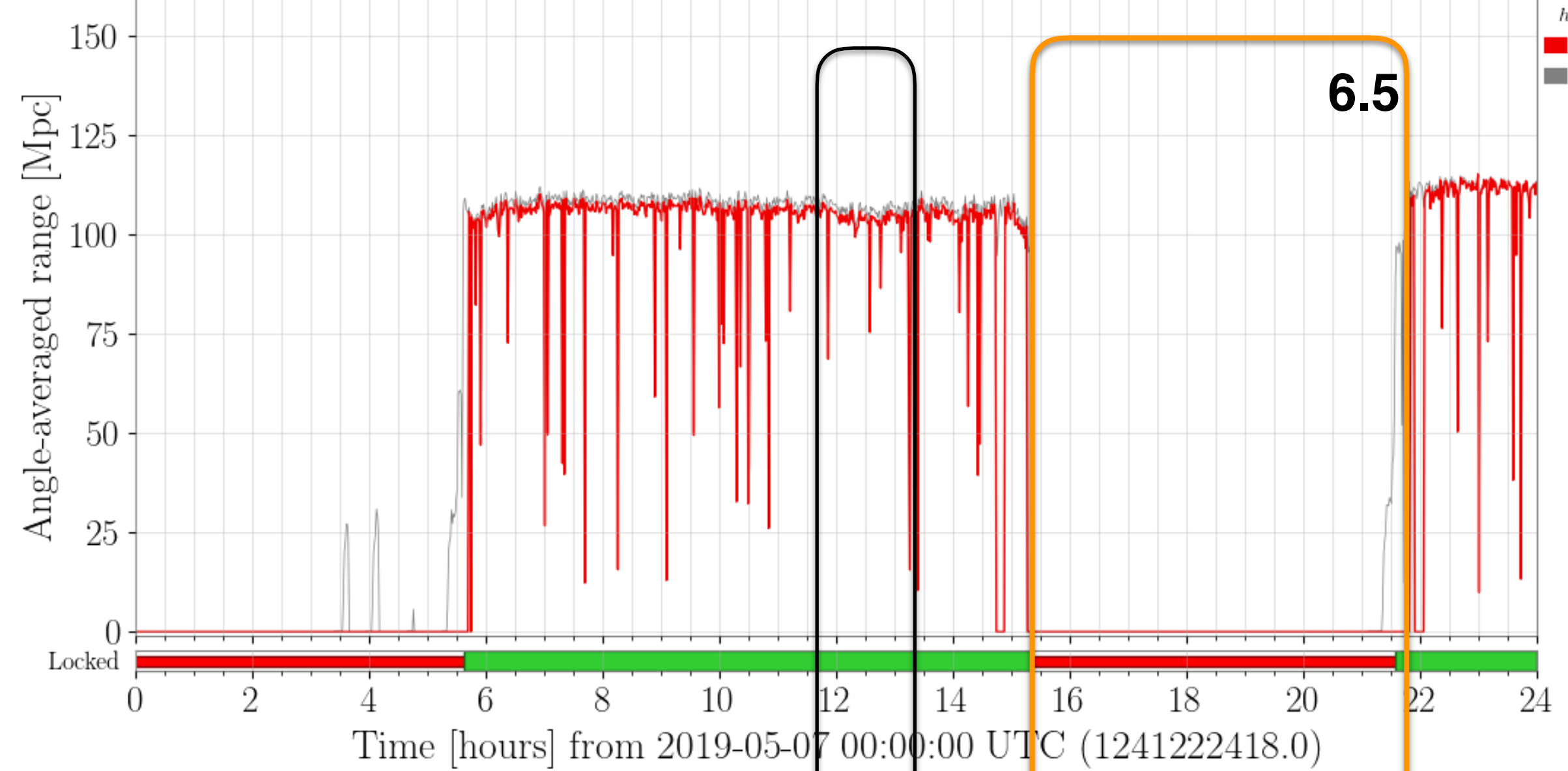
April 17

April 19



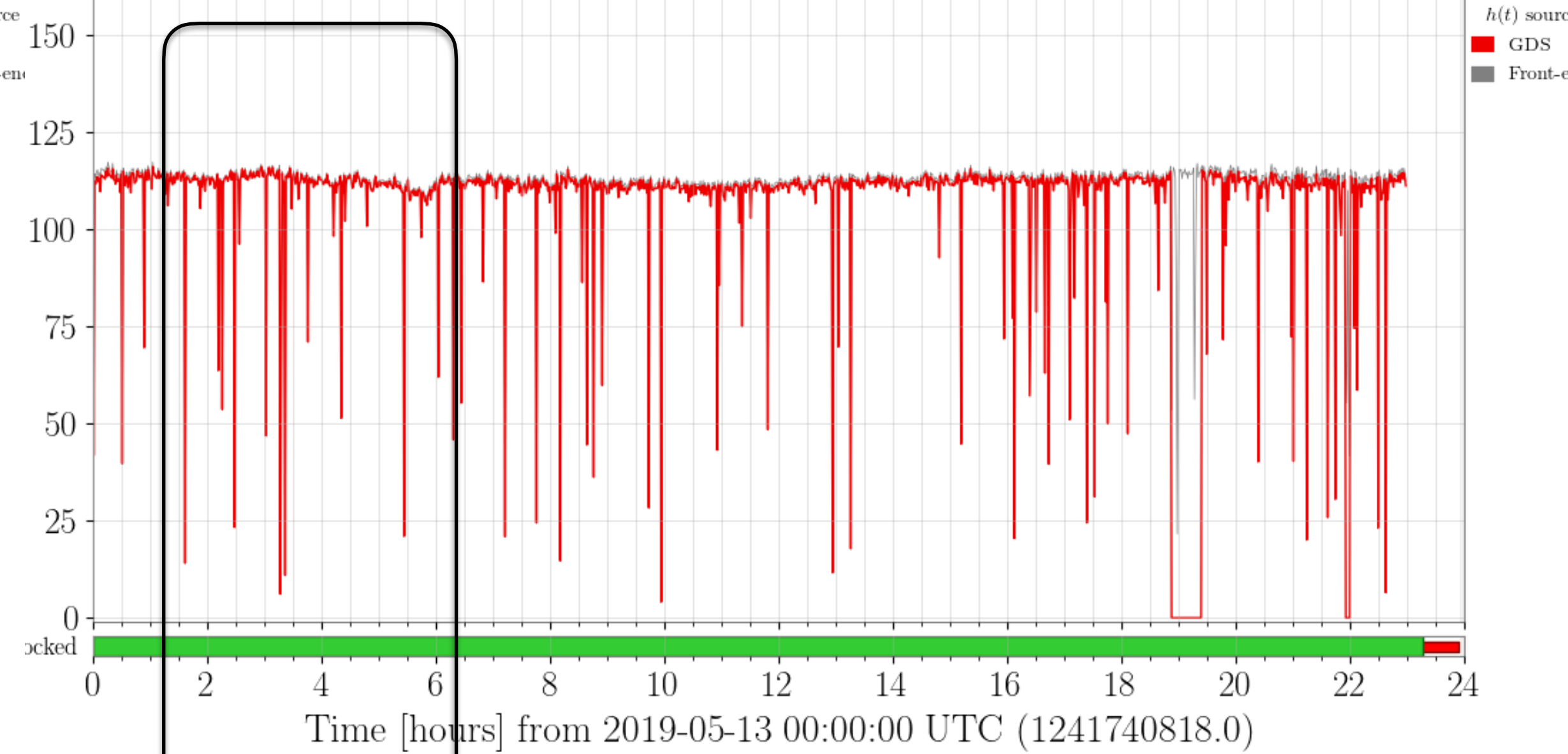
May 7

H1 binary neutron star inspiral range (DMT SenseMon)

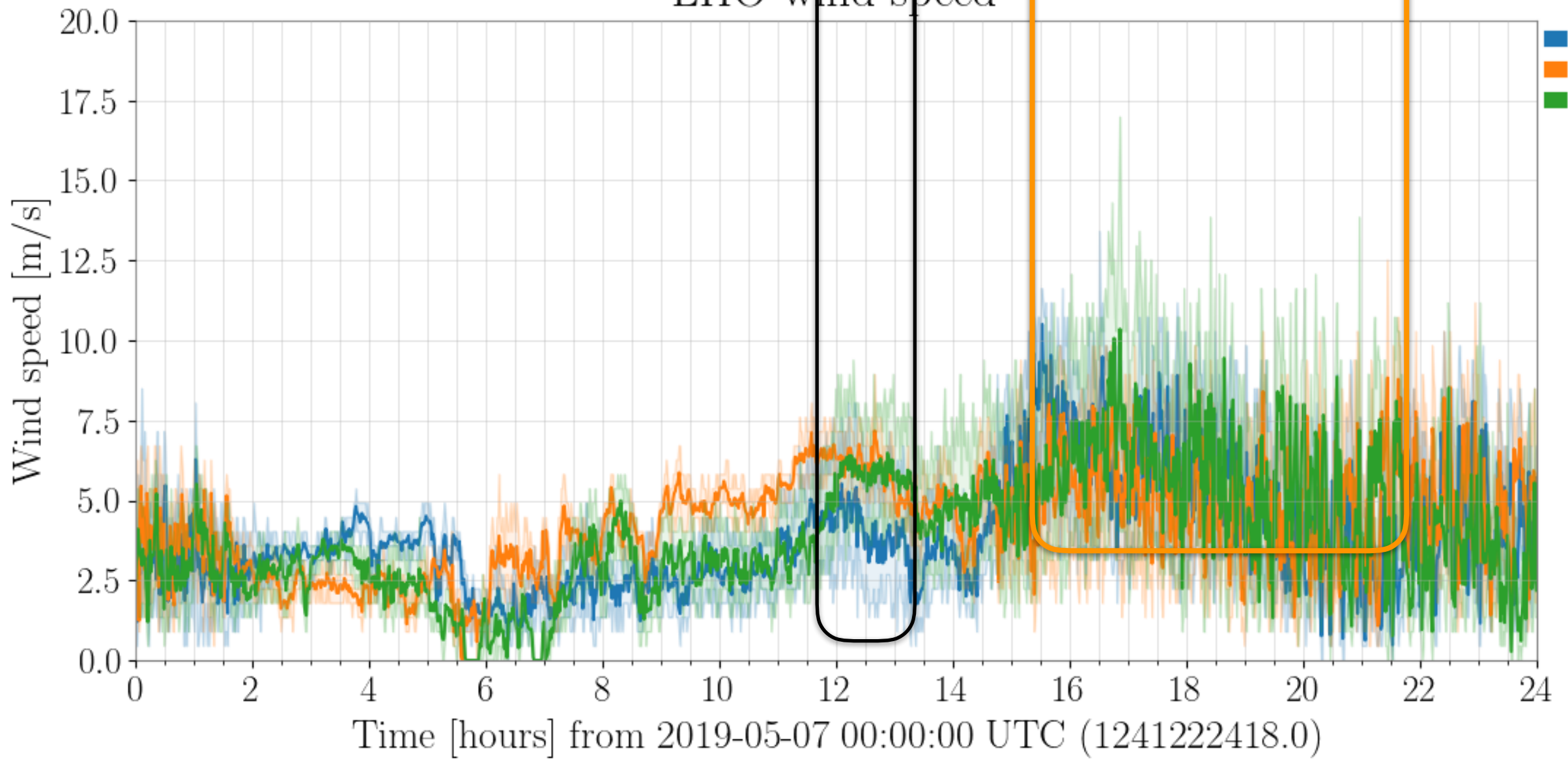


May 13

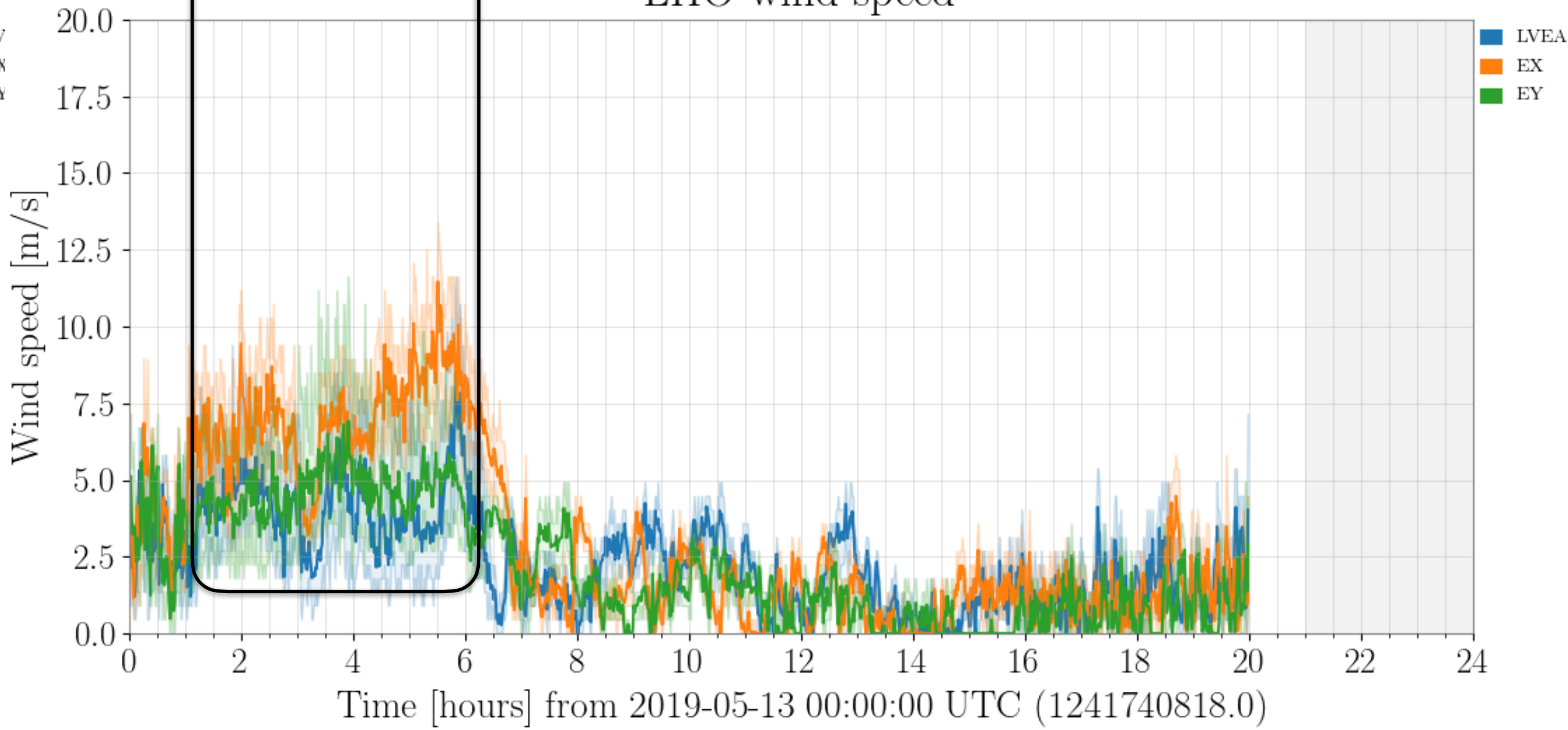
H1 binary neutron star inspiral range (DMT SenseMon)



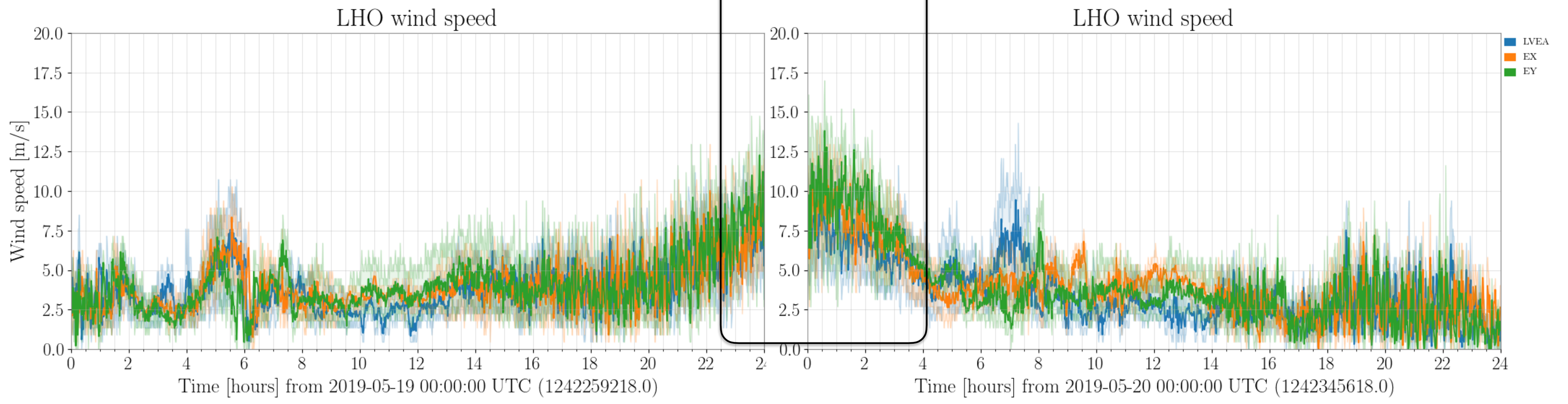
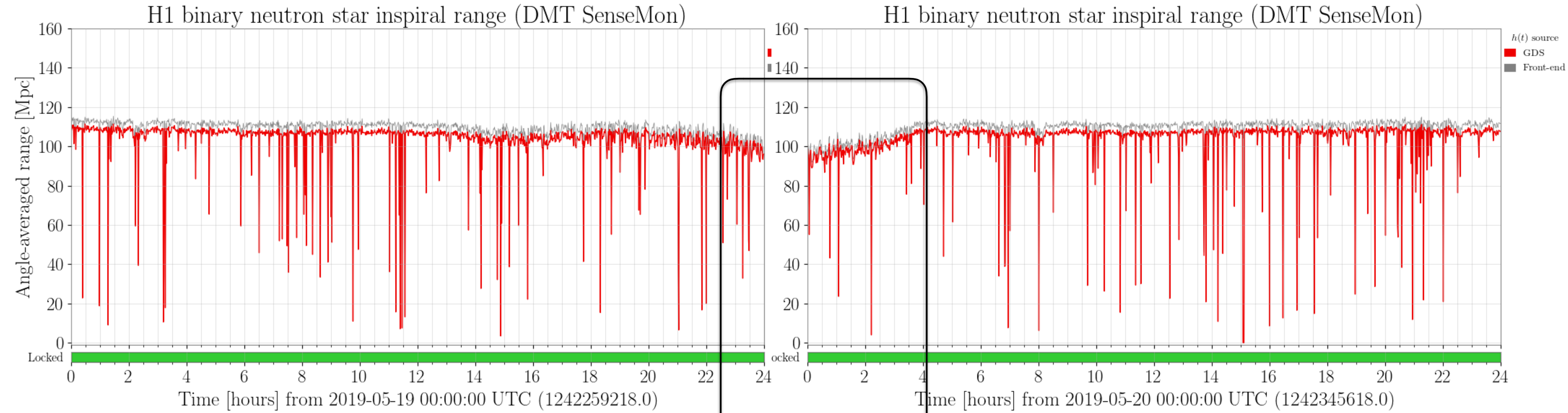
LHO wind speed



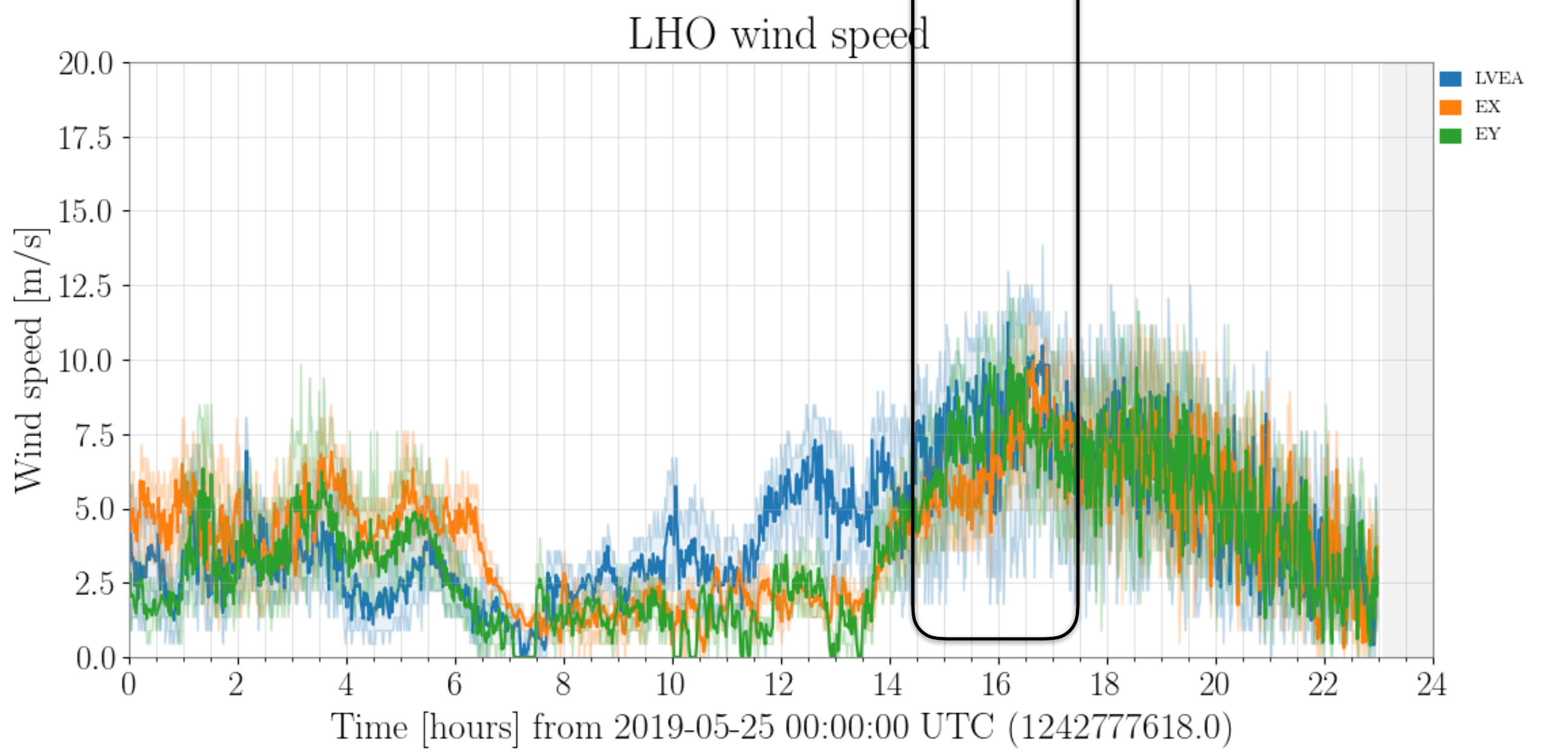
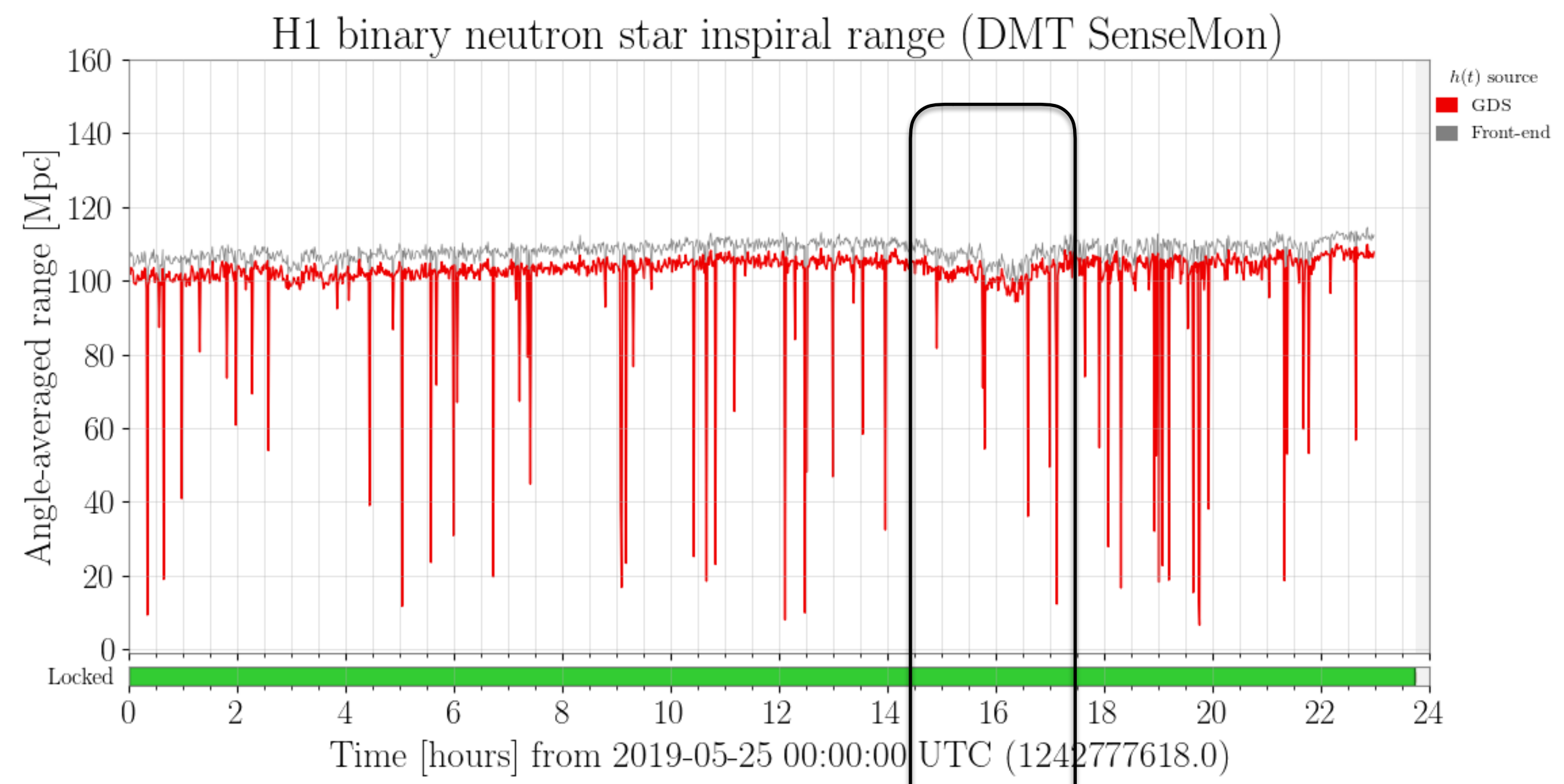
LHO wind speed



May 19 May 20



May 25



May 26 May 27

