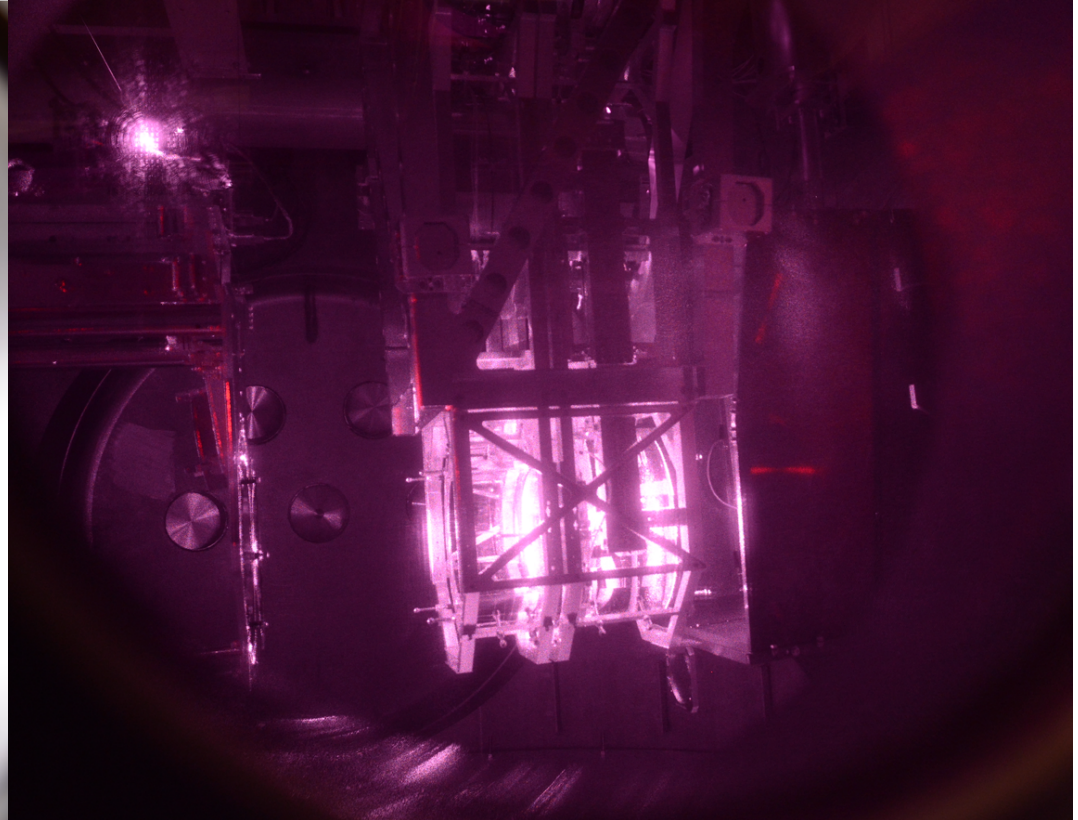
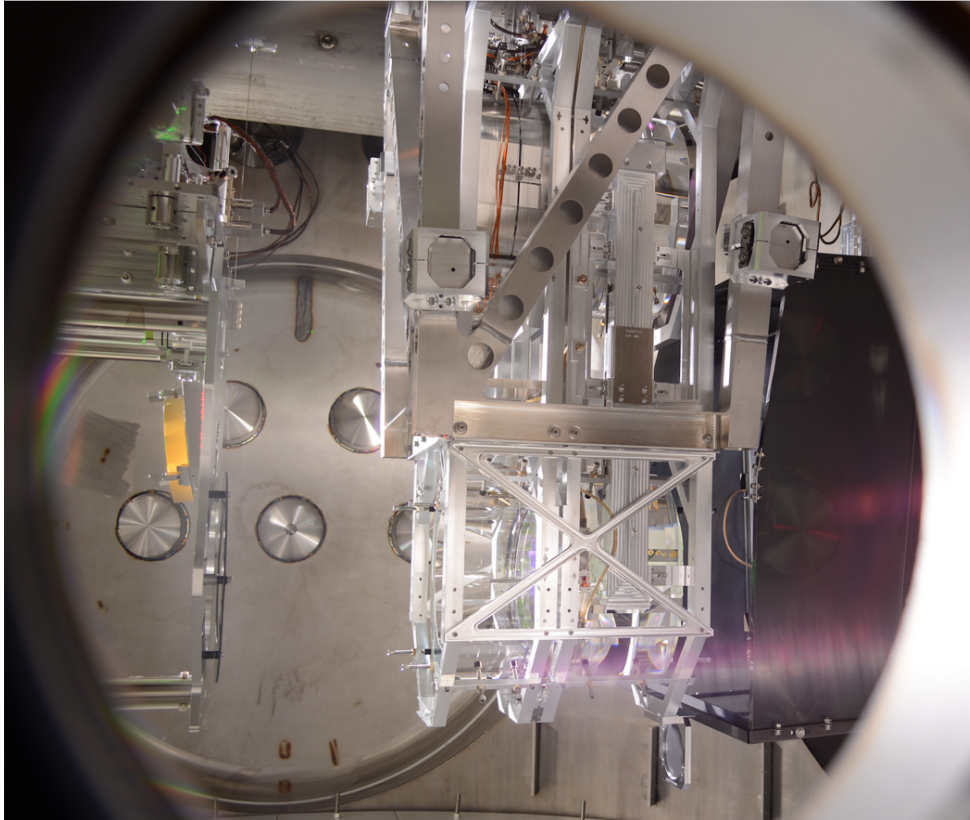
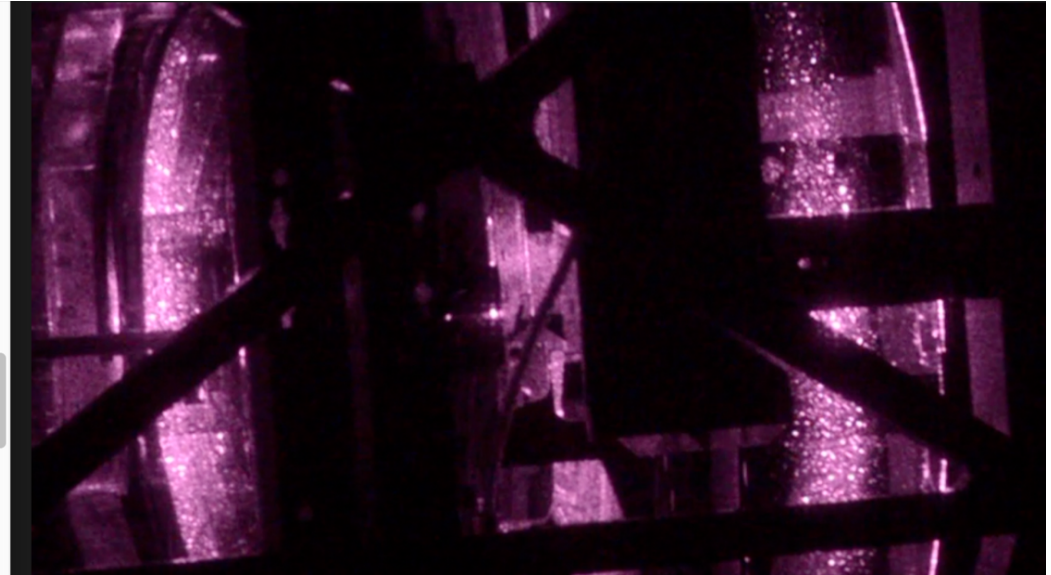
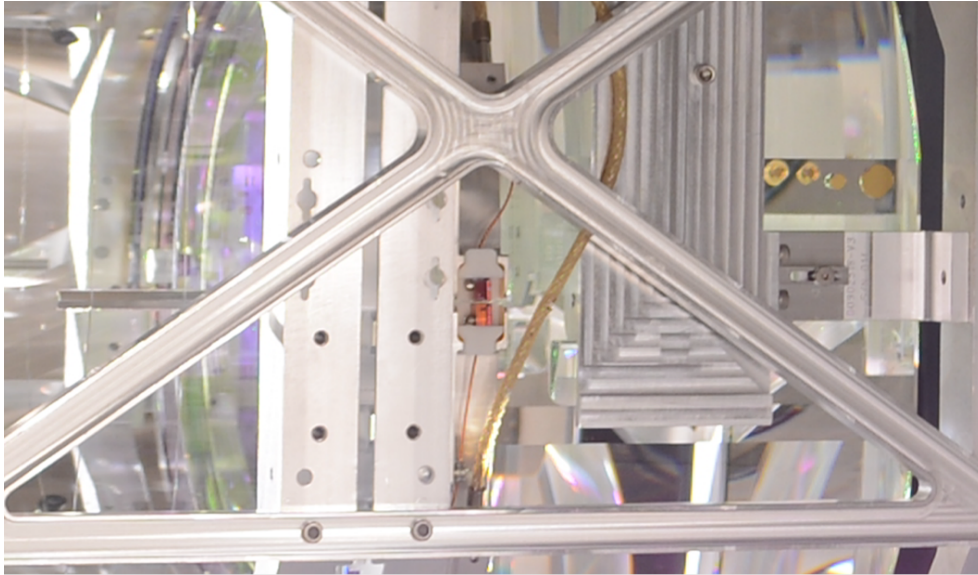


LHO ETMY from middle ISCTEY port (TMS port)

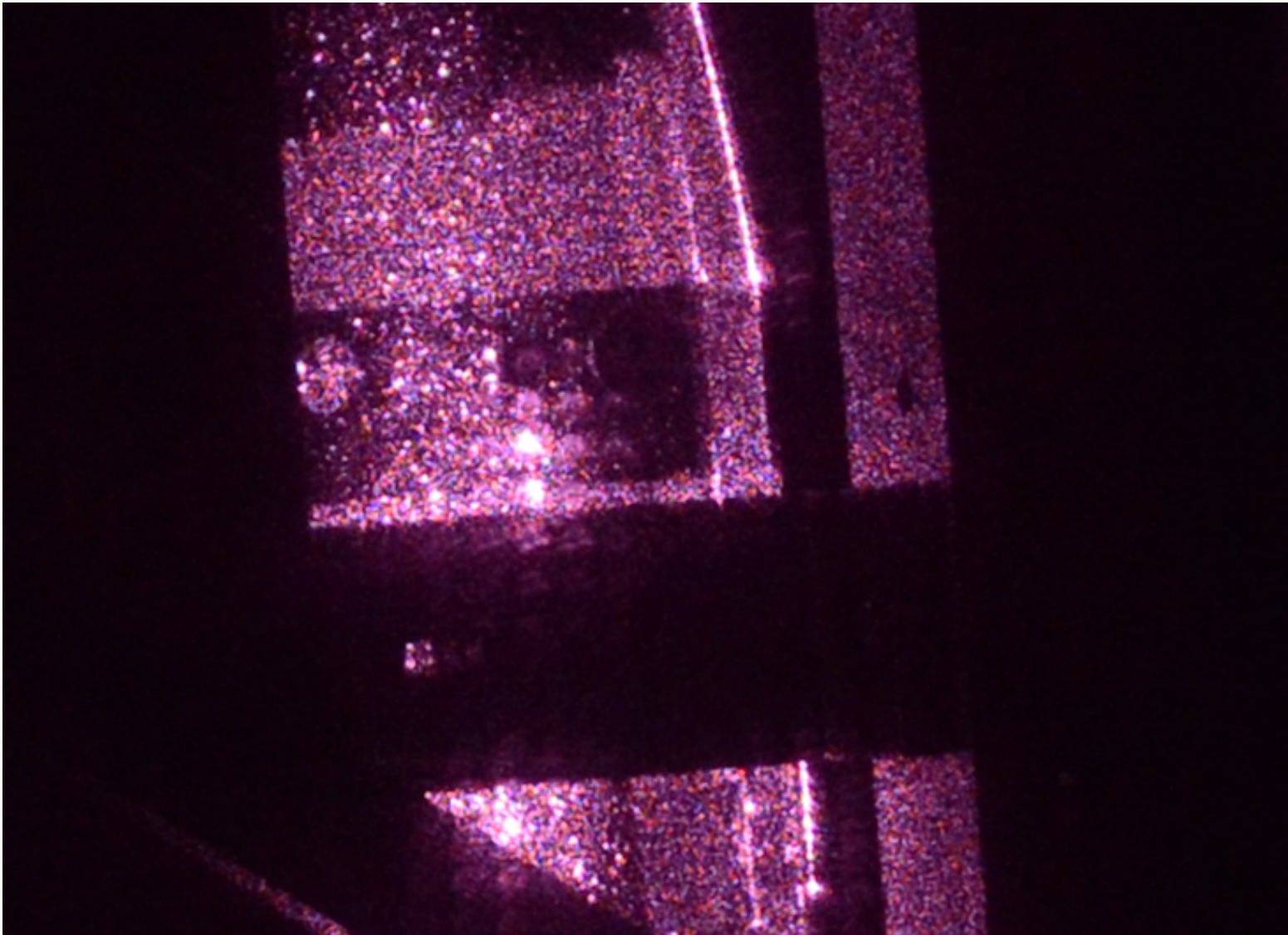


LHO ETMY from TMS-ISCTEY port



Light escaping from front (cavity-side) bevel of test mass

LHO ETMY shows AMDs lit up from outside, possibly light from cage



LLO test mass photographed by Anamaria. The octagonal cage pieces at the front and back of the test mass appear to be highly illuminated, perhaps by light escaping from the edges of the optic. The octagonal pieces at the front and back of the reaction mass are visible but less illuminated. The proximity of these lit pieces to the test mass, moving differentially, make them candidates for scattering noise.

