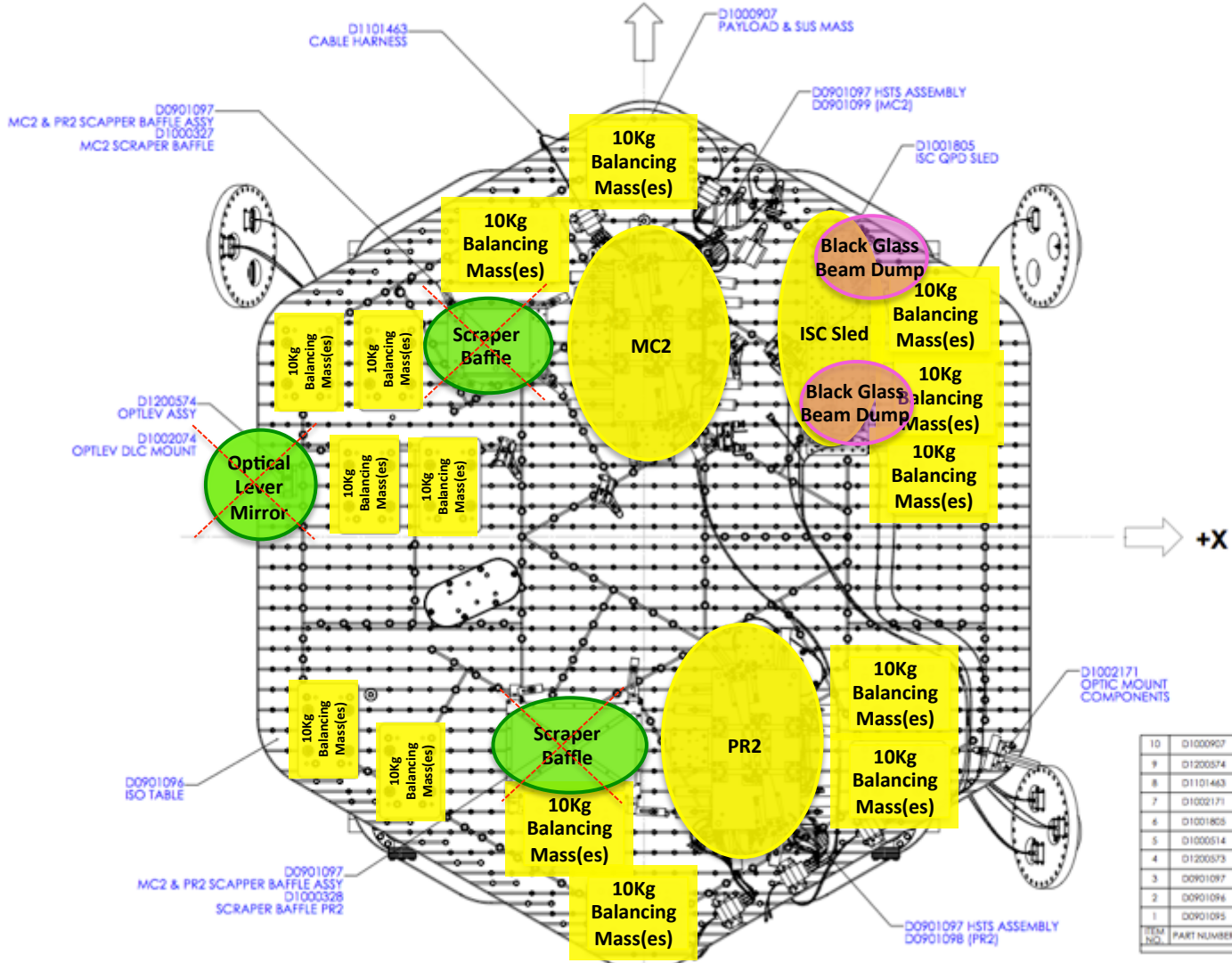


# H1: HAM3 – Jan 14<sup>th</sup> 2013



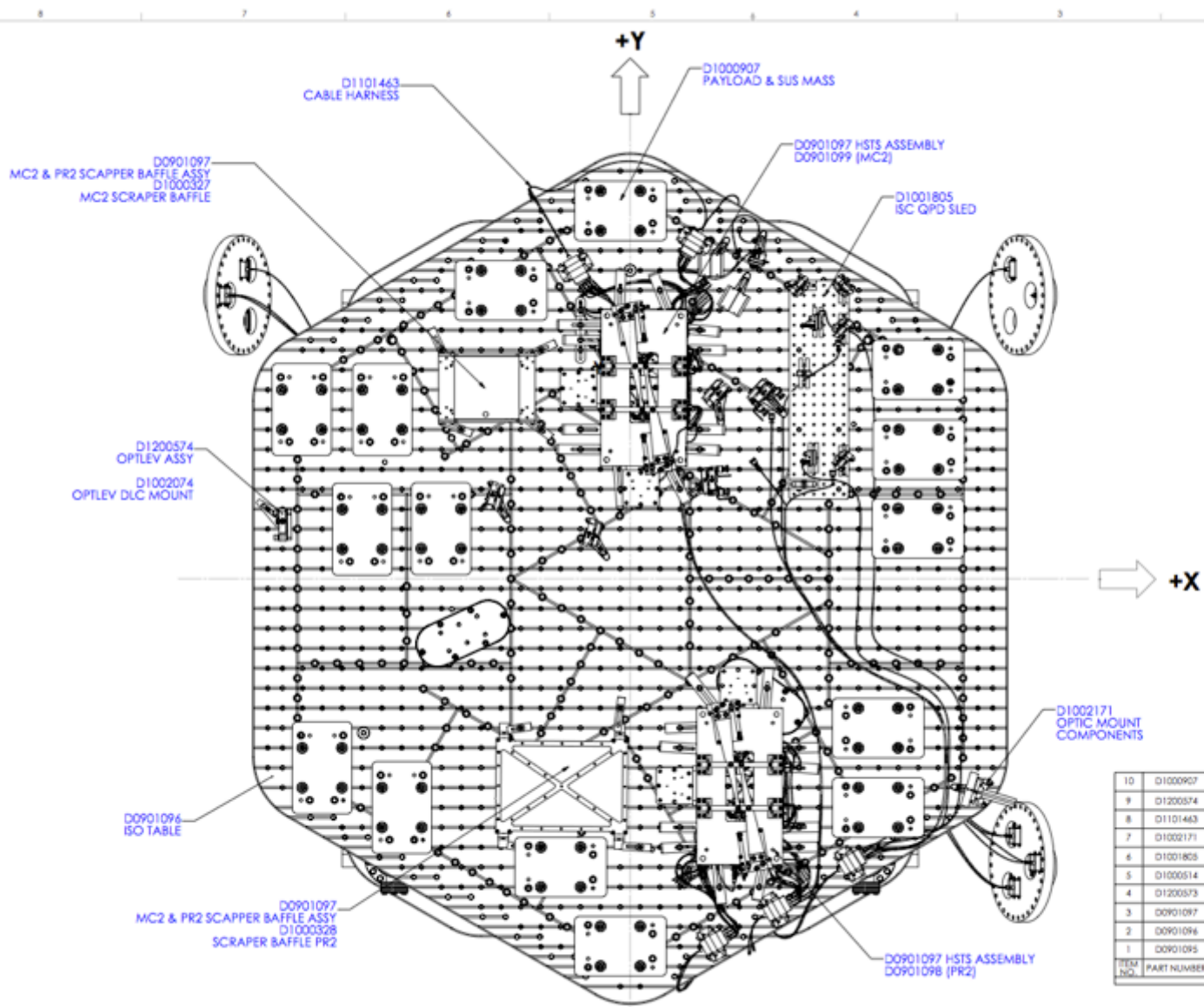
Installed at LHO  
On Top Level  
Drawing\*

Installed at LHO  
Not On Top Level  
Drawing\*

~~Not installed yet at  
LHO,  
Installed At LLO~~

10	D1000907	AdvLIGO HAM3-H1 ISI Table, Payload & Suspended Mass Assembly	1
9	D1200574	AdvLIGO SEI HAM3-H1, XYZ LOCAL FOR OPTLEV DLC COMPONENTS	1
8	D1101463	CABLE HARNESS ROUTING, HAM 3	1
7	D1002171	AdvLIGO SEI HAM3-H1, XYZ LOCAL CS for IO Optic Mount Components	1
6	D1001805	AdvLIGO SEI HAM3-H1, XYZ LOCAL FOR ISC COMPONENTS	1
5	D1000514	HEPI ASSEMBLY, HAM, (LIGO SEI)	1
4	D1200573	AdvLIGO SUS HAM3-H1, XYZ Local CS for MC2 and PR2 Scraper Baffle	1
3	D0901097	AdvLIGO SUS HAM3-H1, XYZ Local CS for HSTS (PR2,MC2)	1
2	D0901096	AdvLIGO SEI HAM3-H1, XYZ Local CS for ISO Table	1
1	D0901095	AdvLIGO VE HAM3-H1, Vacuum Equipment Assembly	1
ITEM NO.	PART NUMBER	DESCRIPTION	REV.
		PART LIST	

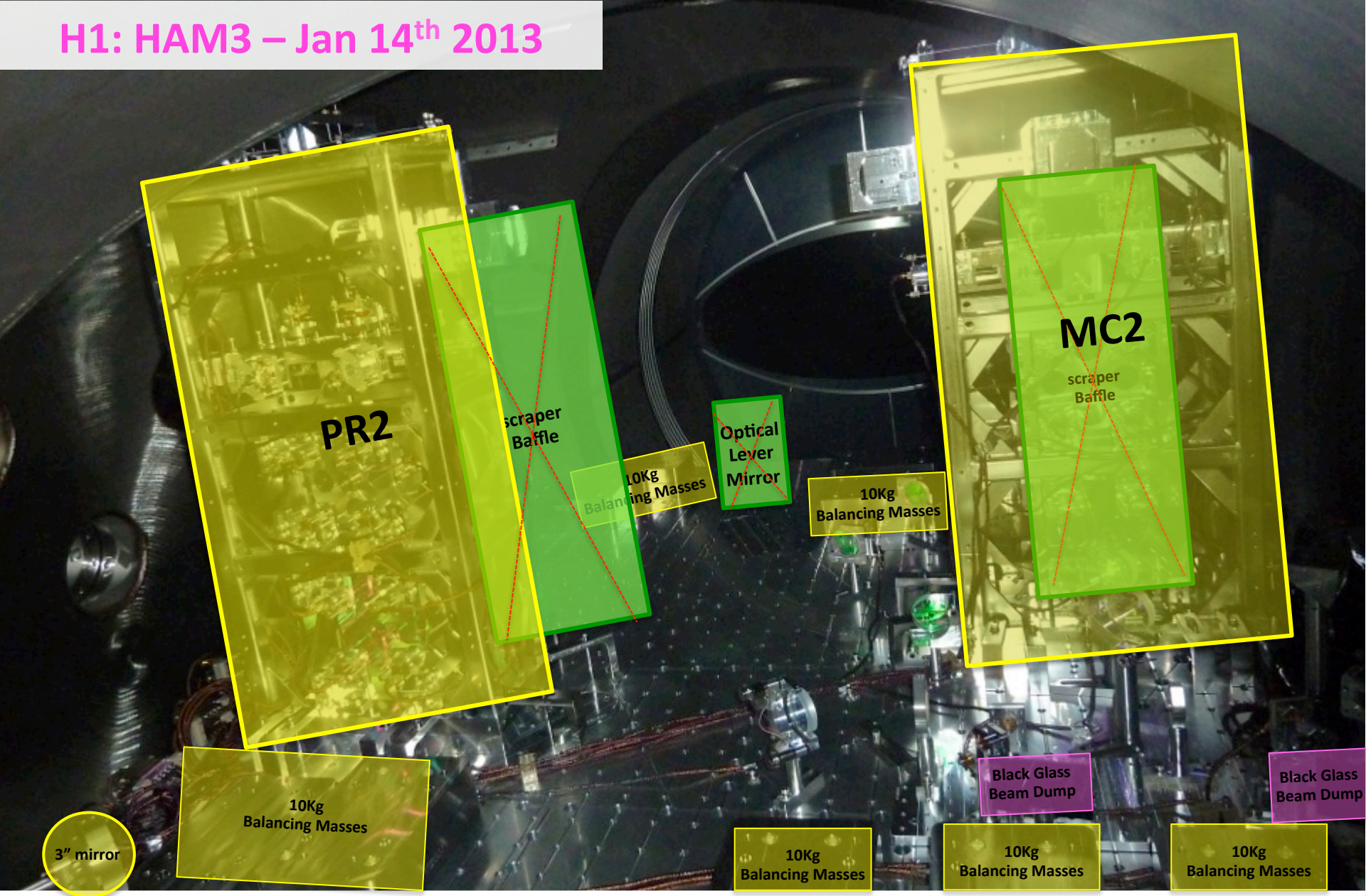
# H1: HAM3 – Jan 14<sup>th</sup> 2013



10	D100097	AdvLIGO HAM3-H1 ISI Table, Payload & Suspended Mass Assembly	1
9	D1200574	AdvLIGO SEI HAM3-H1, XYZ LOCAL FOR OPTLEV DLC COMPONENTS	1
8	D1101463	CABLE HARNESS ROUTING, HAM3	1
7	D1002171	AdvLIGO SEI HAM3-H1, XYZ LOCAL CS for IO Optic Mount Components	1
6	D1001805	AdvLIGO SEI HAM3-H1, XYZ LOCAL FOR ISC COMPONENTS	1
5	D1000514	HEPI ASSEMBLY, HAM, AdvLIGO SEI	1
4	D1200573	AdvLIGO SUS HAM3-H1, XYZ Local for MC2 and PR2 Scrapper Baffle	1
3	D0901097	AdvLIGO SUS HAM3-H1, XYZ Local CS for HSTS (PR2,MC2)	1
2	D0901096	AdvLIGO SEI HAM3-H1, XYZ Local CS for ISO Table	1
1	D0901095	AdvLIGO VE HAM3-H1, Vacuum Equipment Assembly	1
ITEM NO.	PART NUMBER	DESCRIPTION	QTY

CALIFORNIA INSTITUTE OF TECHNOLOGY  
 MASSACHUSETTS INSTITUTE OF TECHNOLOGY  
 SIZE: D DWG. NO.: **D0901094** REV: **v8**  
 SCALE: 1:5 PROJECTION: SHEET 3 OF 4

# H1: HAM3 – Jan 14<sup>th</sup> 2013



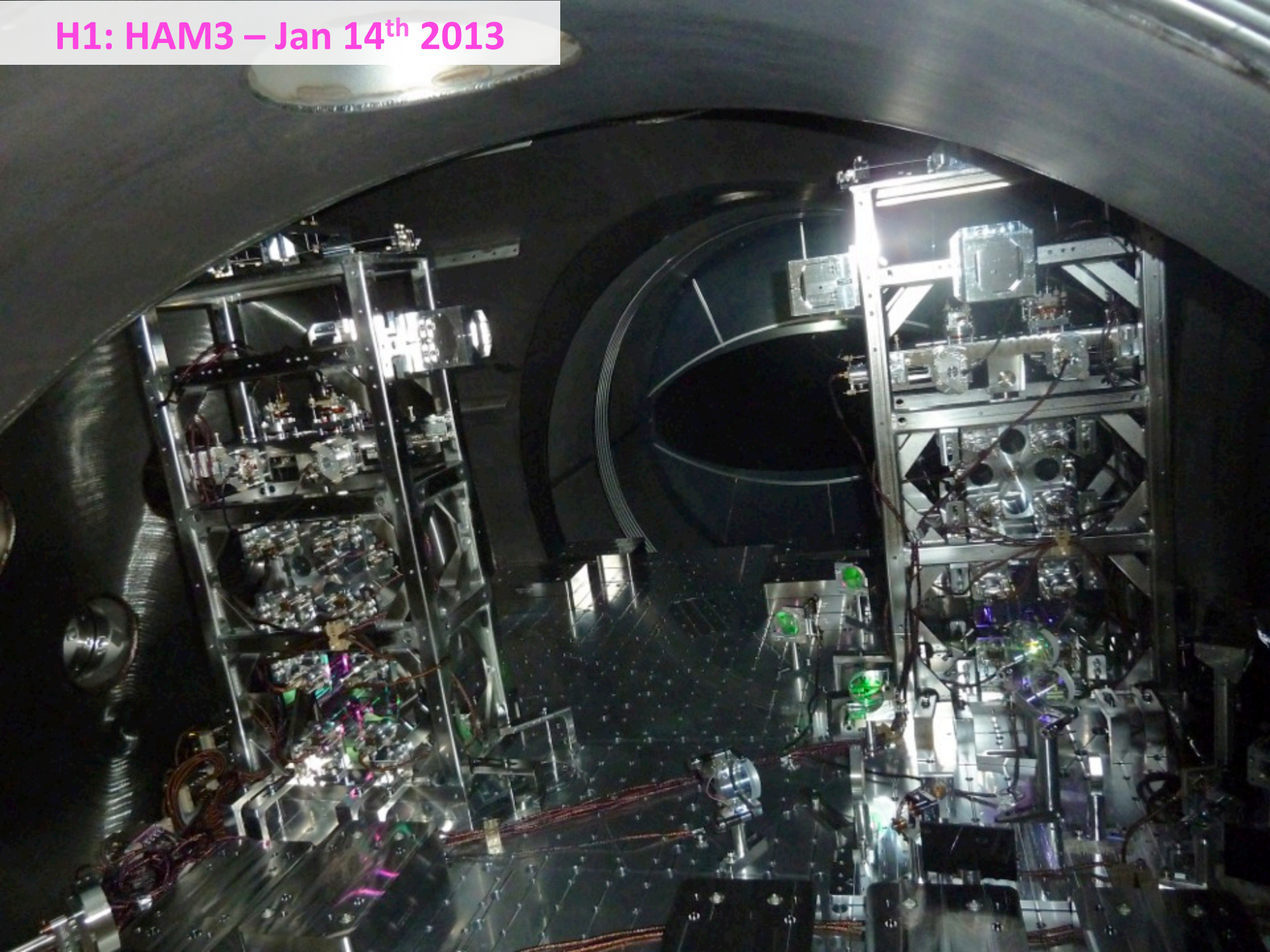
Installed at LHO  
On Top Level  
Drawing\*

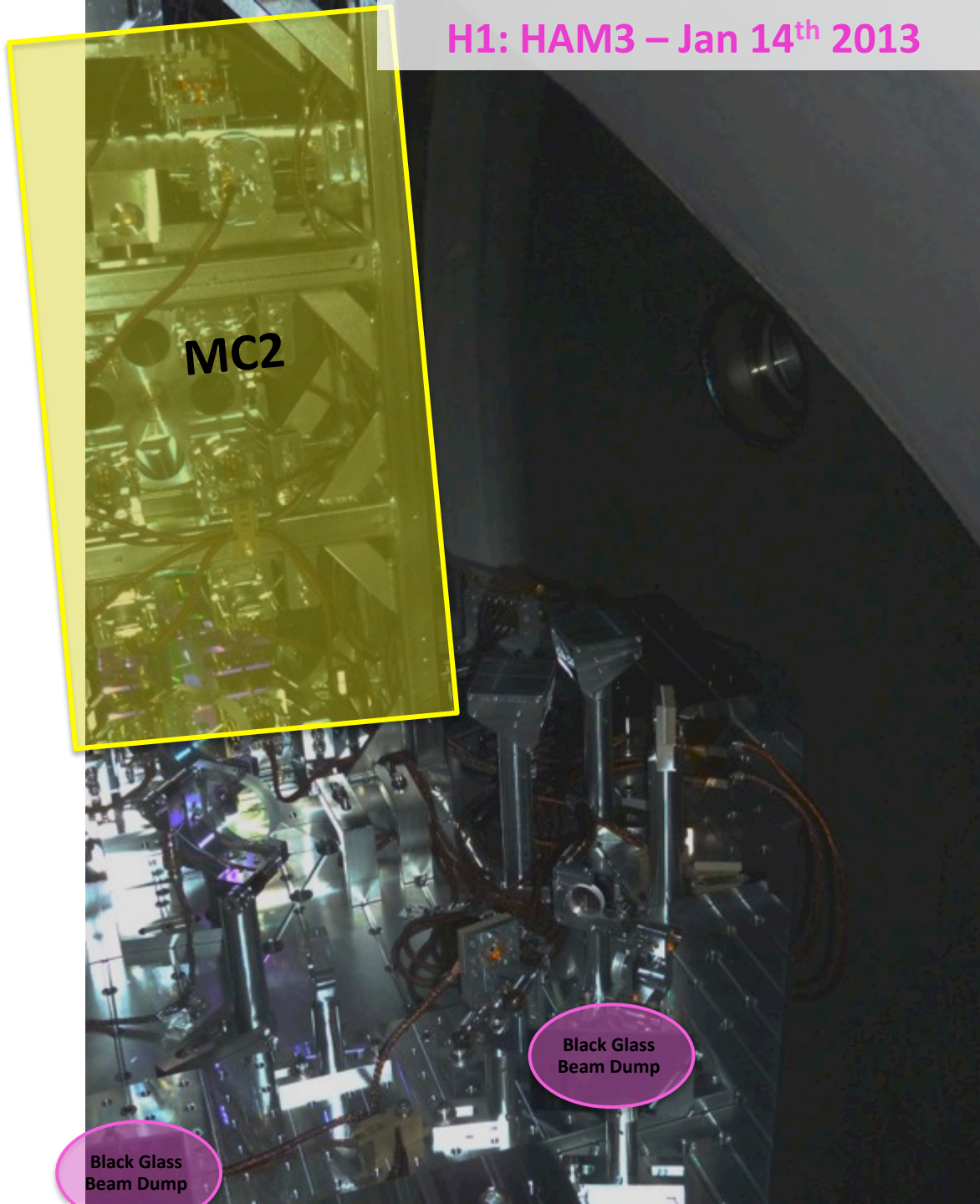
Installed at LHO  
Not On Top Level  
Drawing\*

~~It installed yet at  
LHO  
Installed At LLO~~

\*: Top Level Drawing D0901094

H1: HAM3 – Jan 14<sup>th</sup> 2013





Installed at LHO  
On Top Level  
Drawing\*

Installed at LHO  
Not On Top Level  
Drawing\*

~~Not installed yet at  
LHO  
Installed At LLO~~

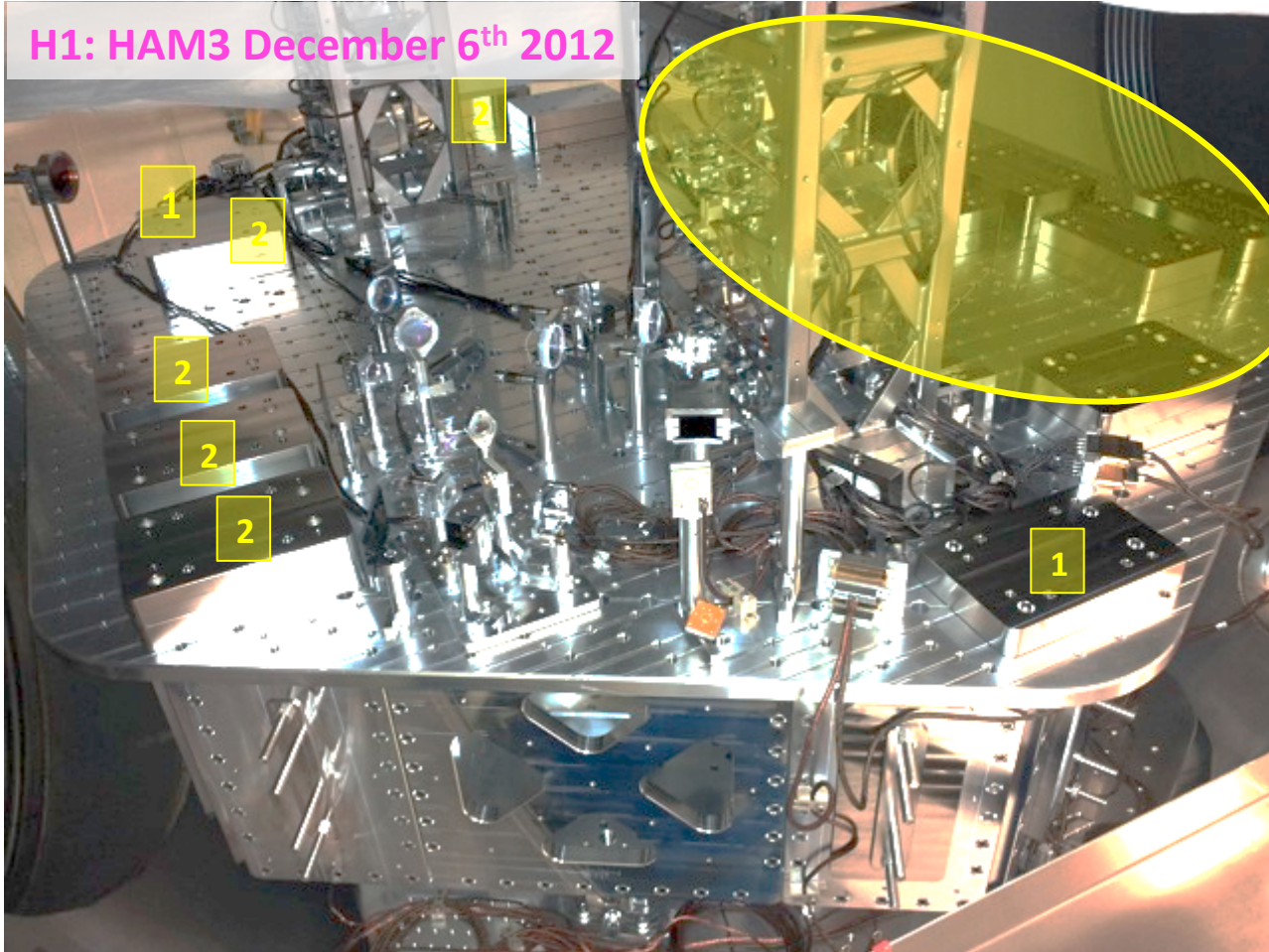
Black Glass  
Beam Dump

Black Glass  
Beam Dump

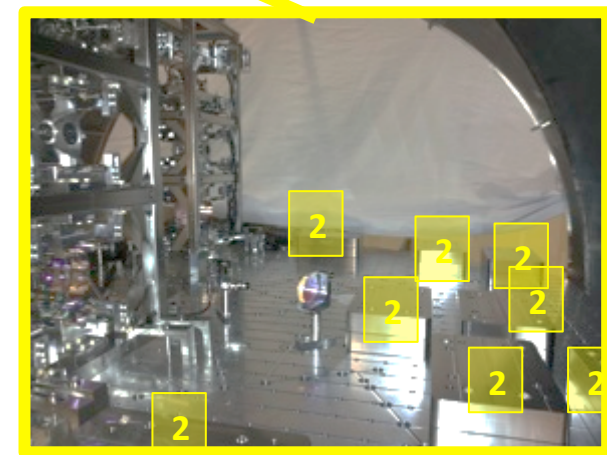
\*: Top Level Drawing D0901094

# Detailed Optical Table Payload on December 6<sup>th</sup> 2012

H1: HAM3 December 6<sup>th</sup> 2012



Scraper Baffles  
weight accounted for  
on the wall masses



**1 = 1 x 10kg Mass**  
**2 = 2 x 10kg Mass**