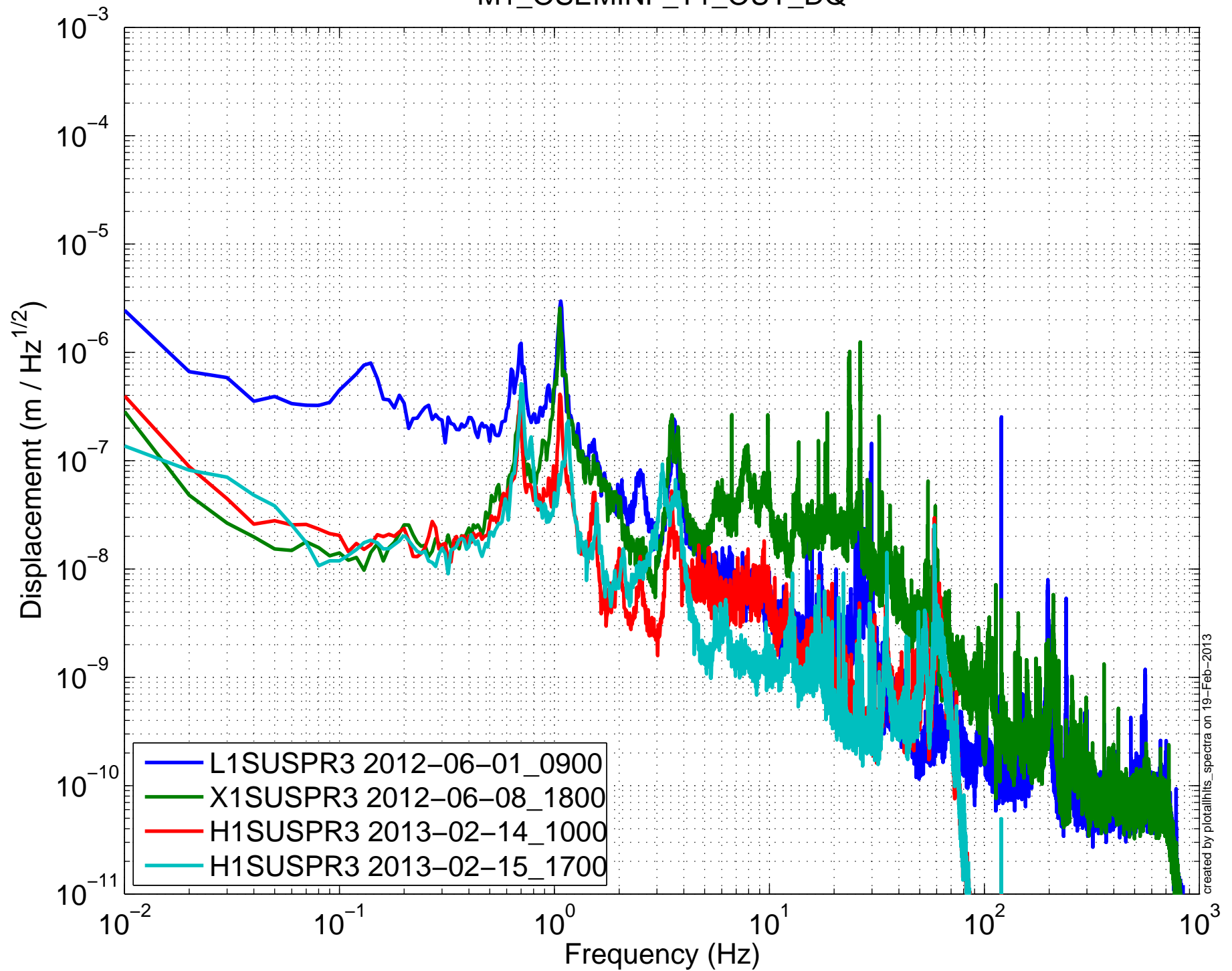
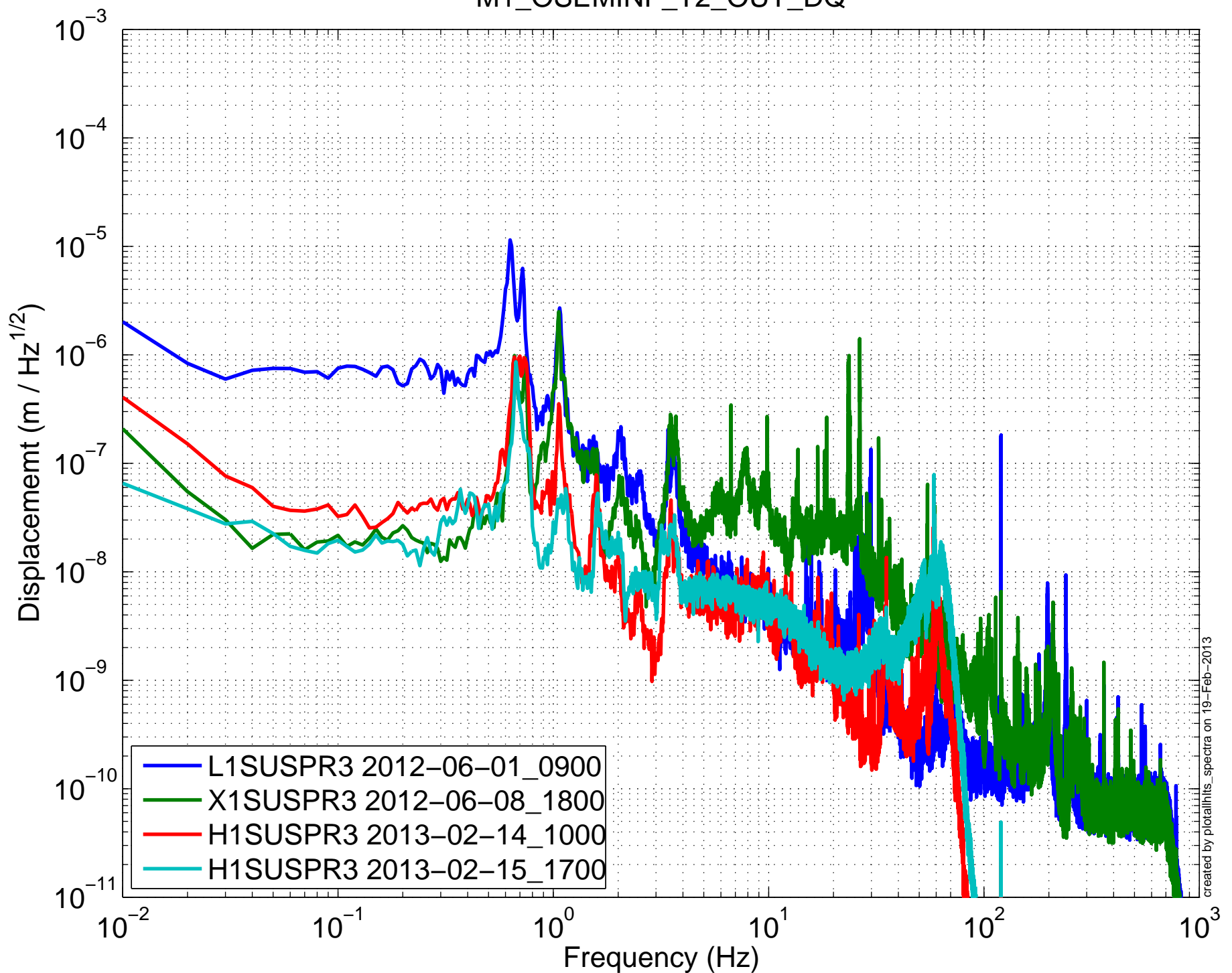


(HLTS) Amplitude Spectral Density – Damping ON  
M1\_OSEMINF\_T1\_OUT\_DQ

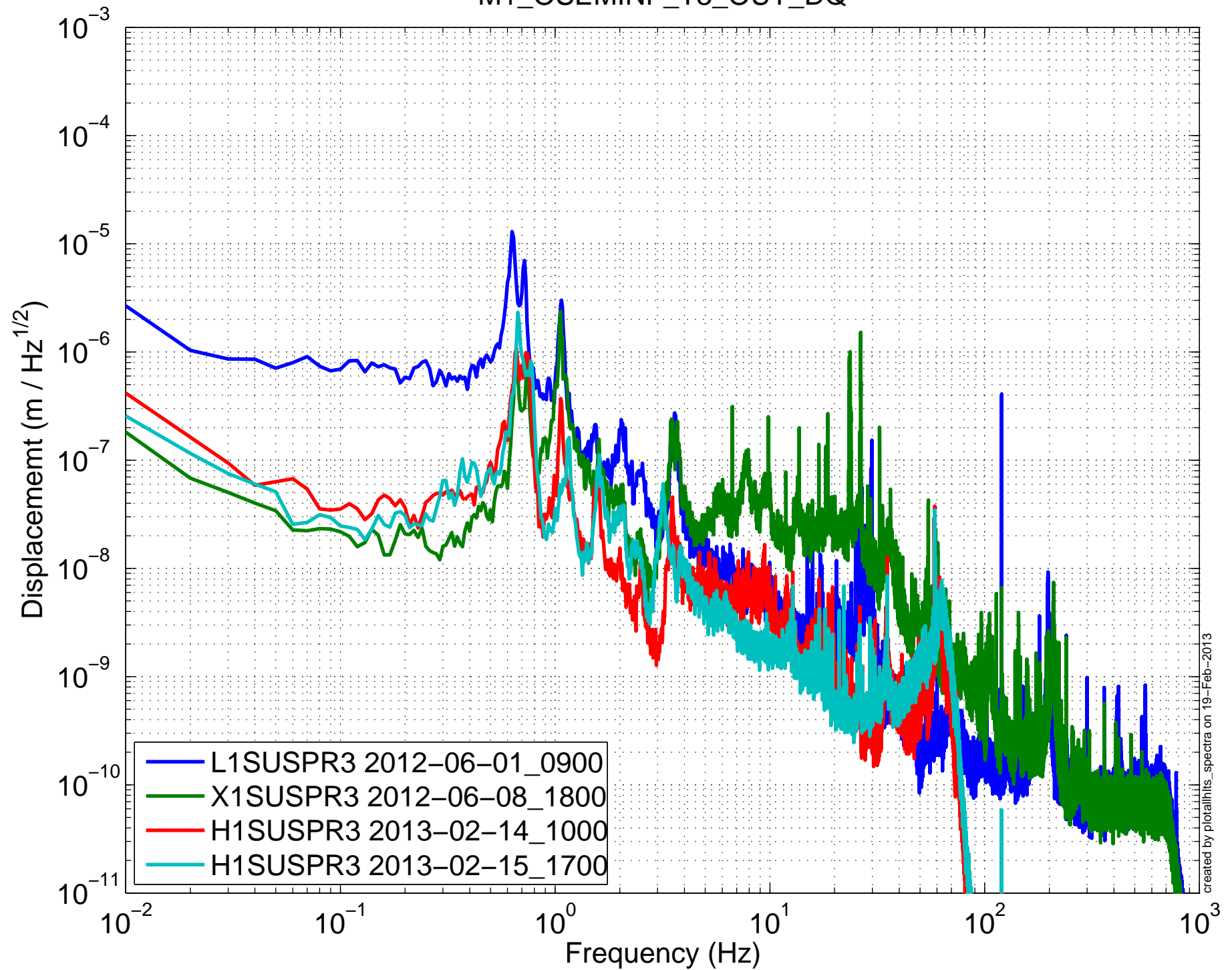


(HLTS) Amplitude Spectral Density – Damping ON  
M1\_OSEMINF\_T2\_OUT\_DQ

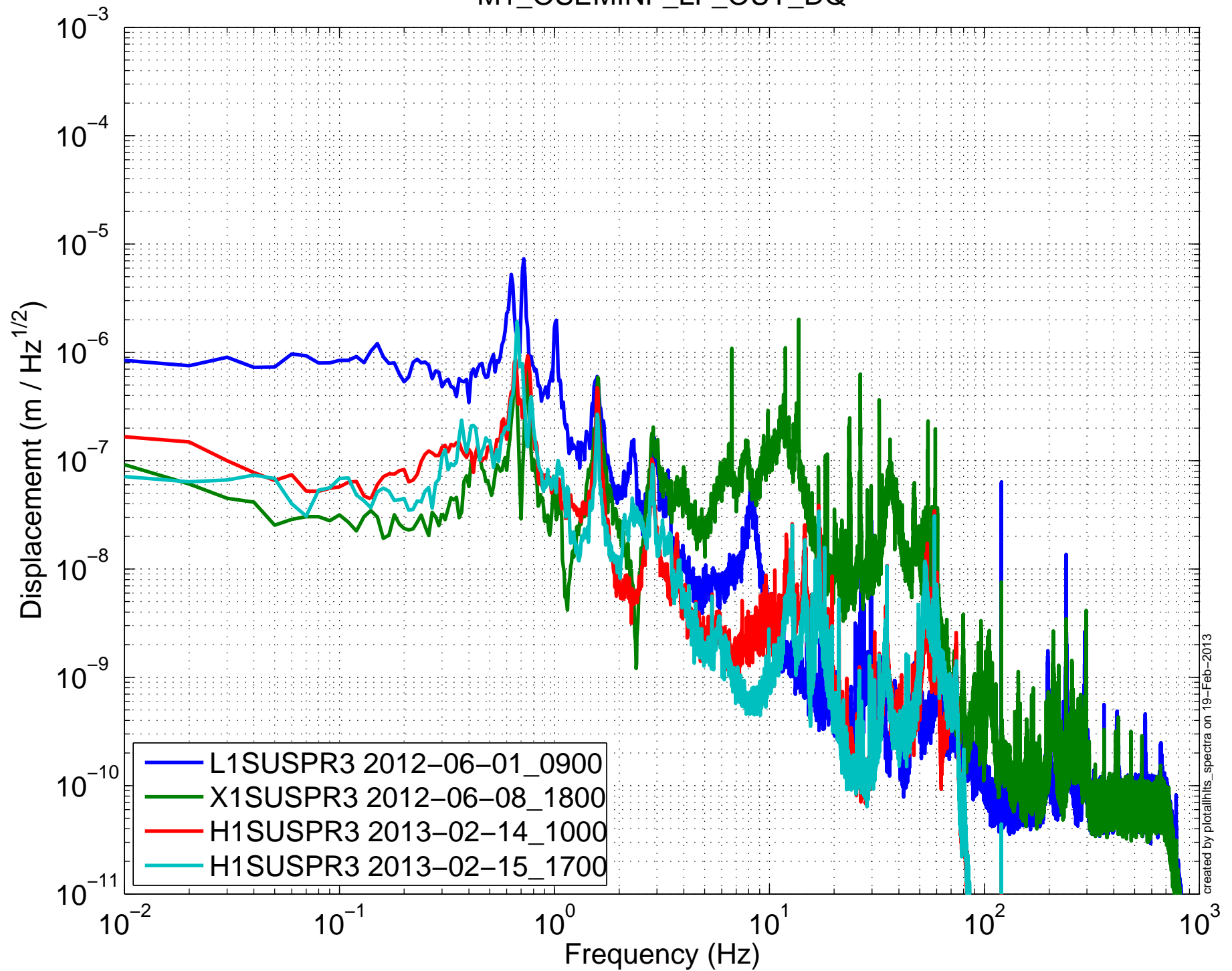


created by plotallhls\_spectra on 19-Feb-2013

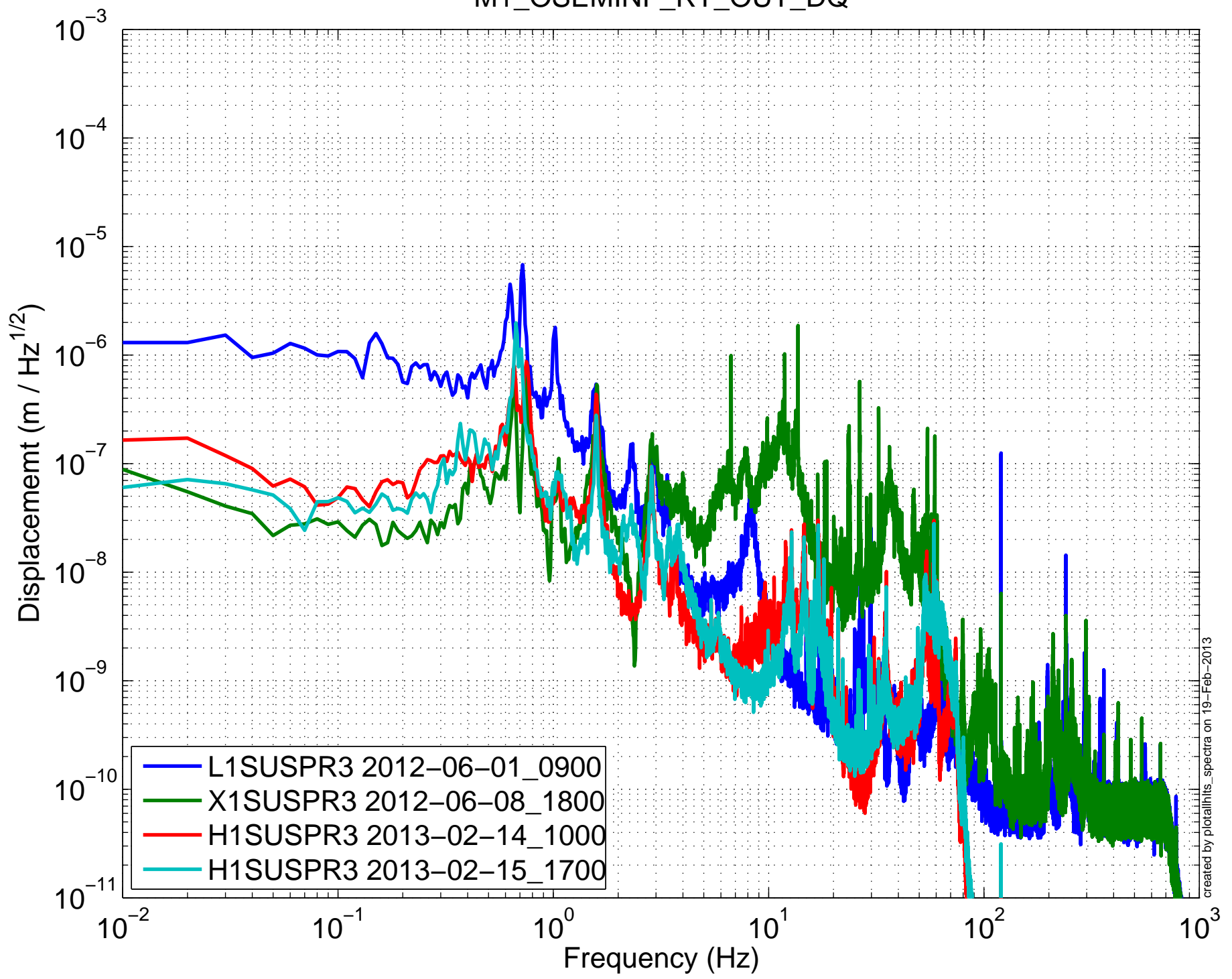
(HLTS) Amplitude Spectral Density – Damping ON  
M1\_OSEMINF\_T3\_OUT\_DQ



(HLTS) Amplitude Spectral Density – Damping ON  
M1\_OSEMINF\_LF\_OUT\_DQ

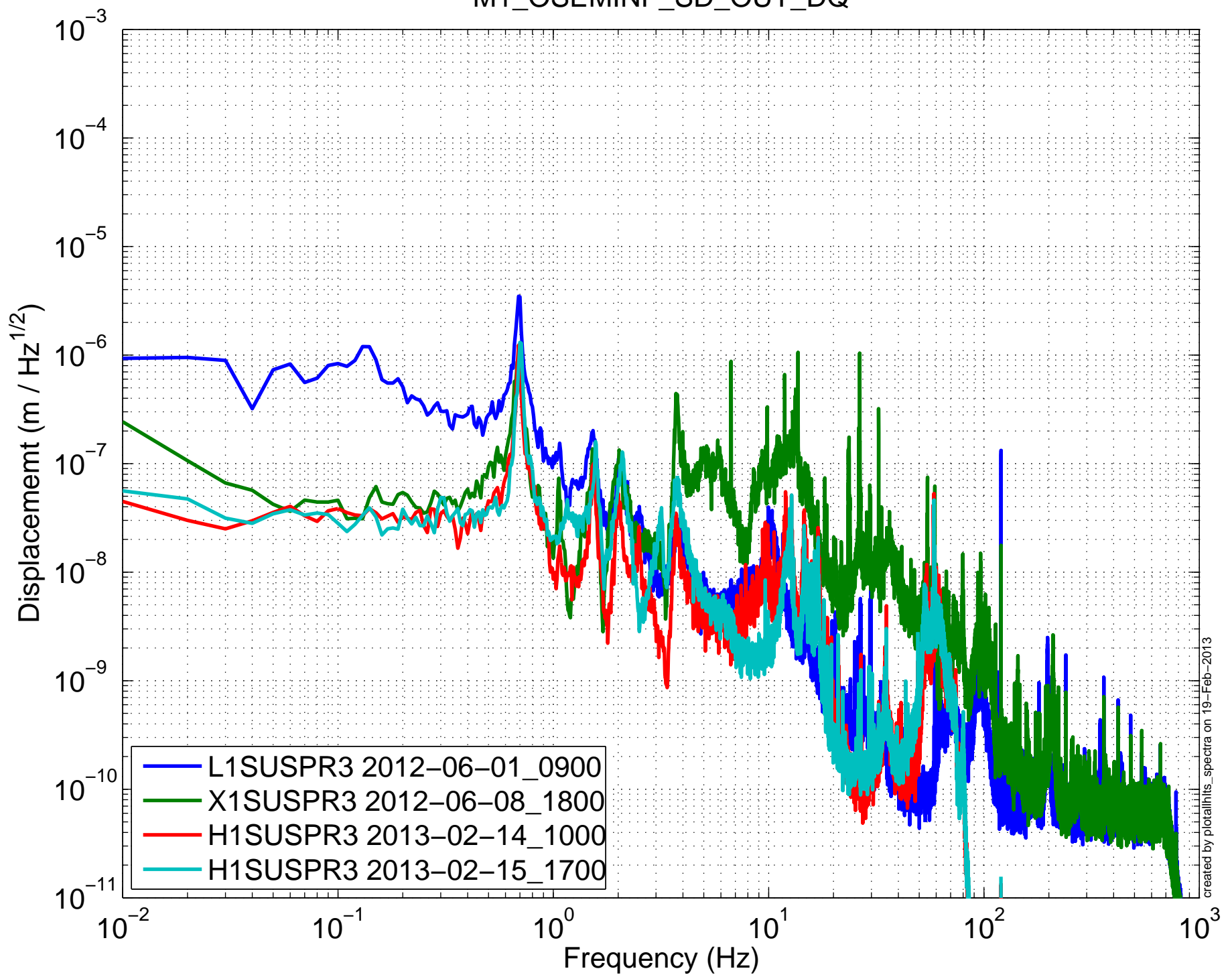


(HLTS) Amplitude Spectral Density – Damping ON  
M1\_OSEMINF\_RT\_OUT\_DQ



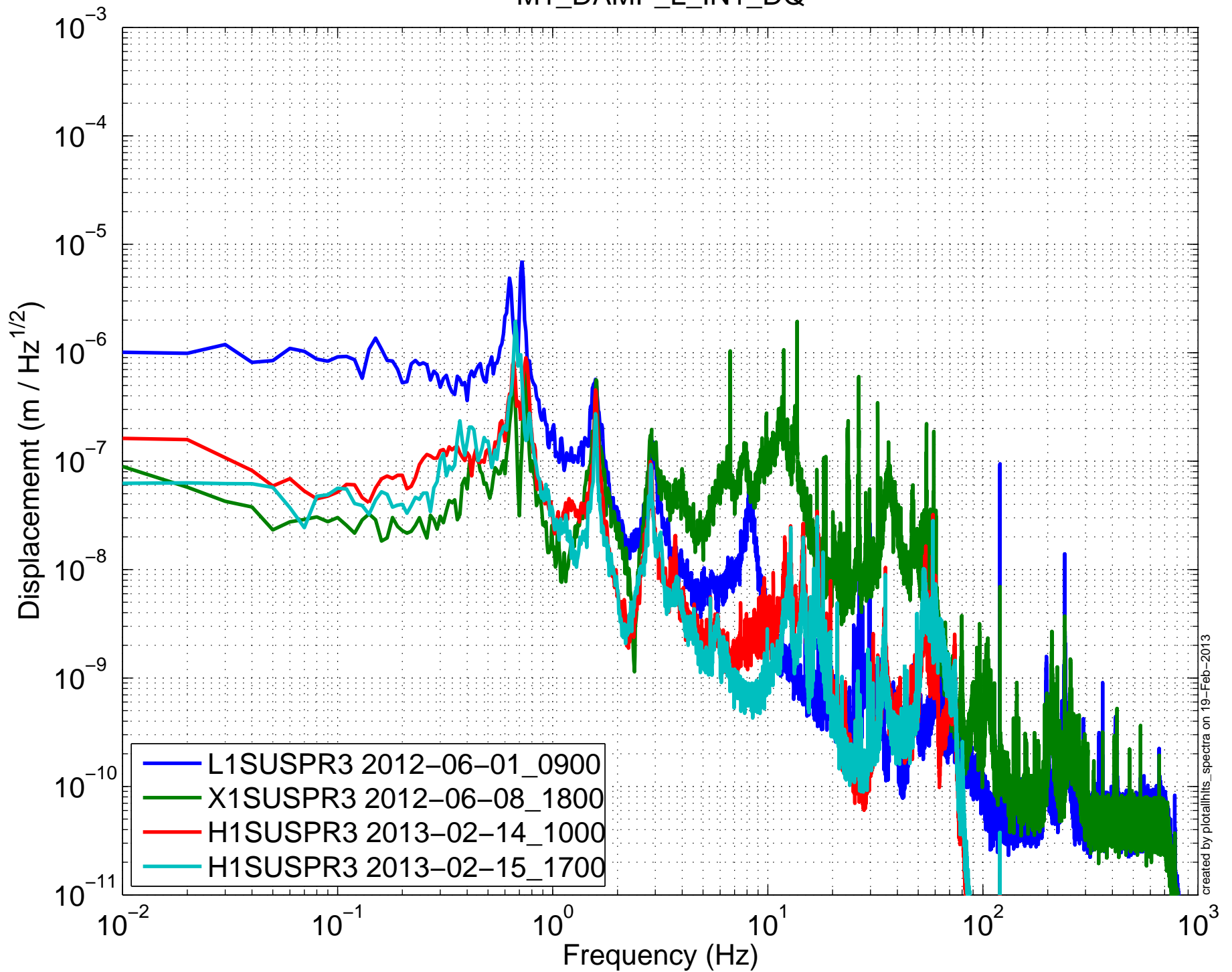
created by plotallhls\_spectra on 19-Feb-2013

(HLTS) Amplitude Spectral Density – Damping ON  
M1\_OSEMINF\_SD\_OUT\_DQ

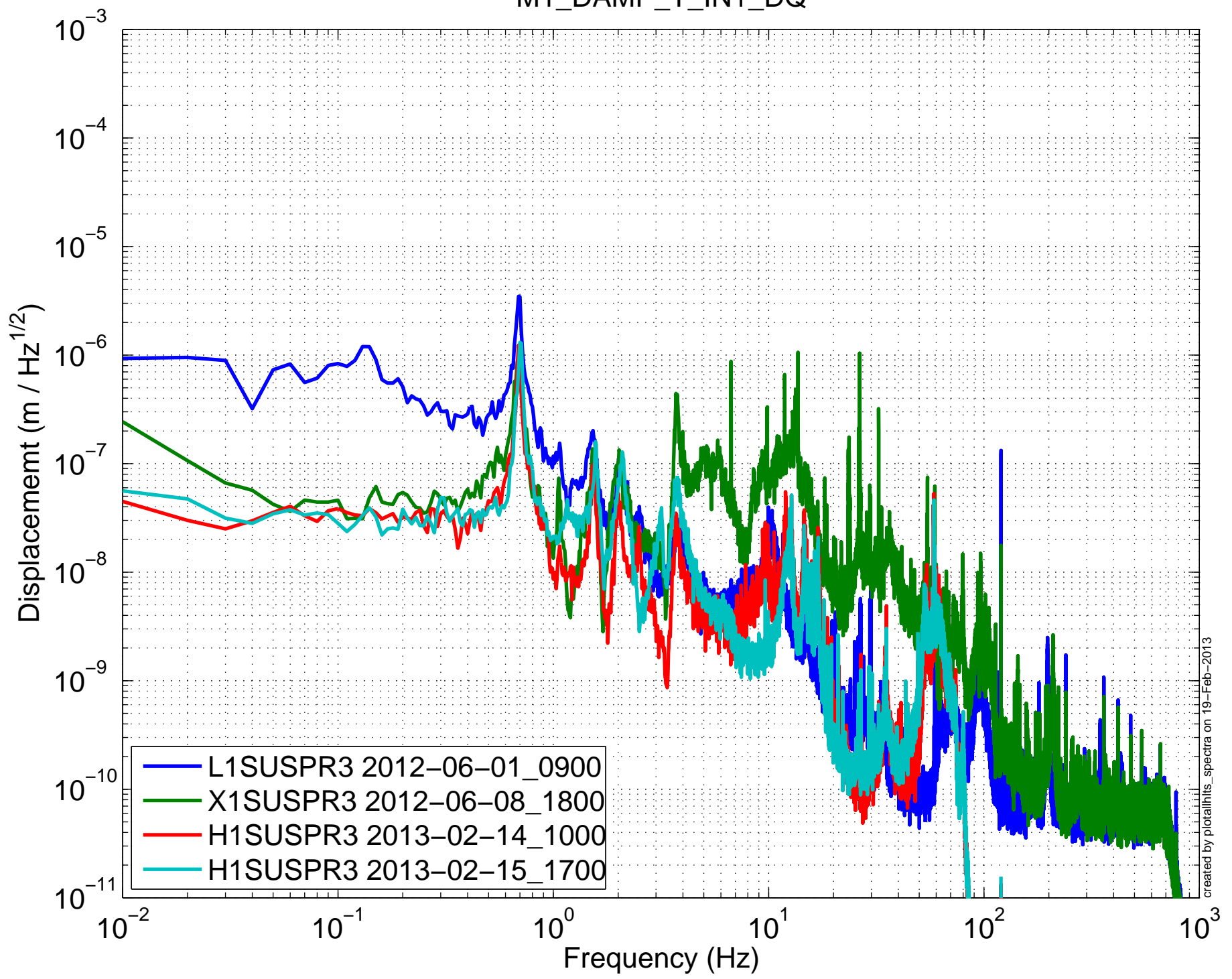


created by plotallhls\_spectra on 19-Feb-2013

(HLTS) Amplitude Spectral Density – Damping ON  
M1\_DAMP\_L\_IN1\_DQ

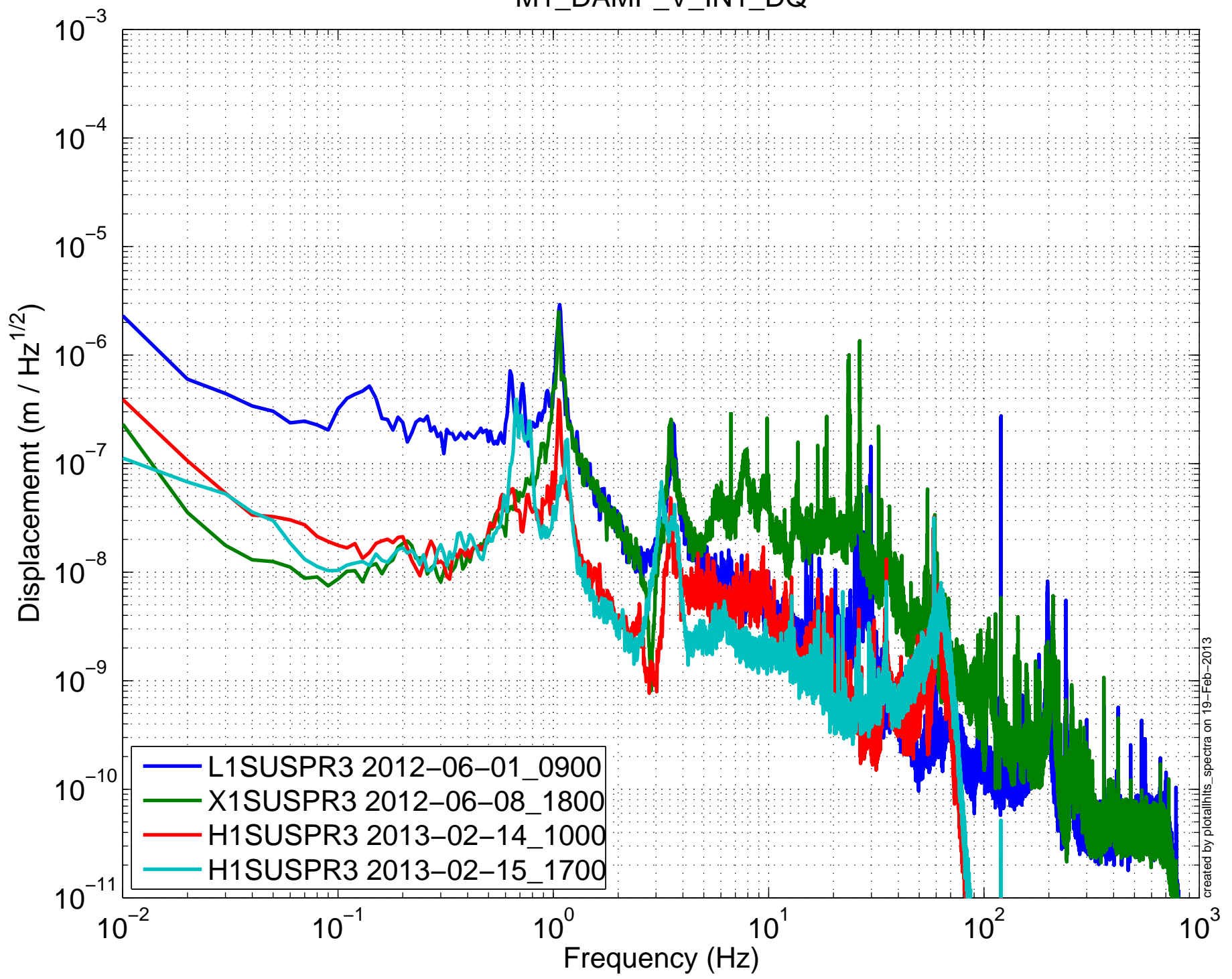


(HLTS) Amplitude Spectral Density – Damping ON  
M1\_DAMP\_T\_IN1\_DQ



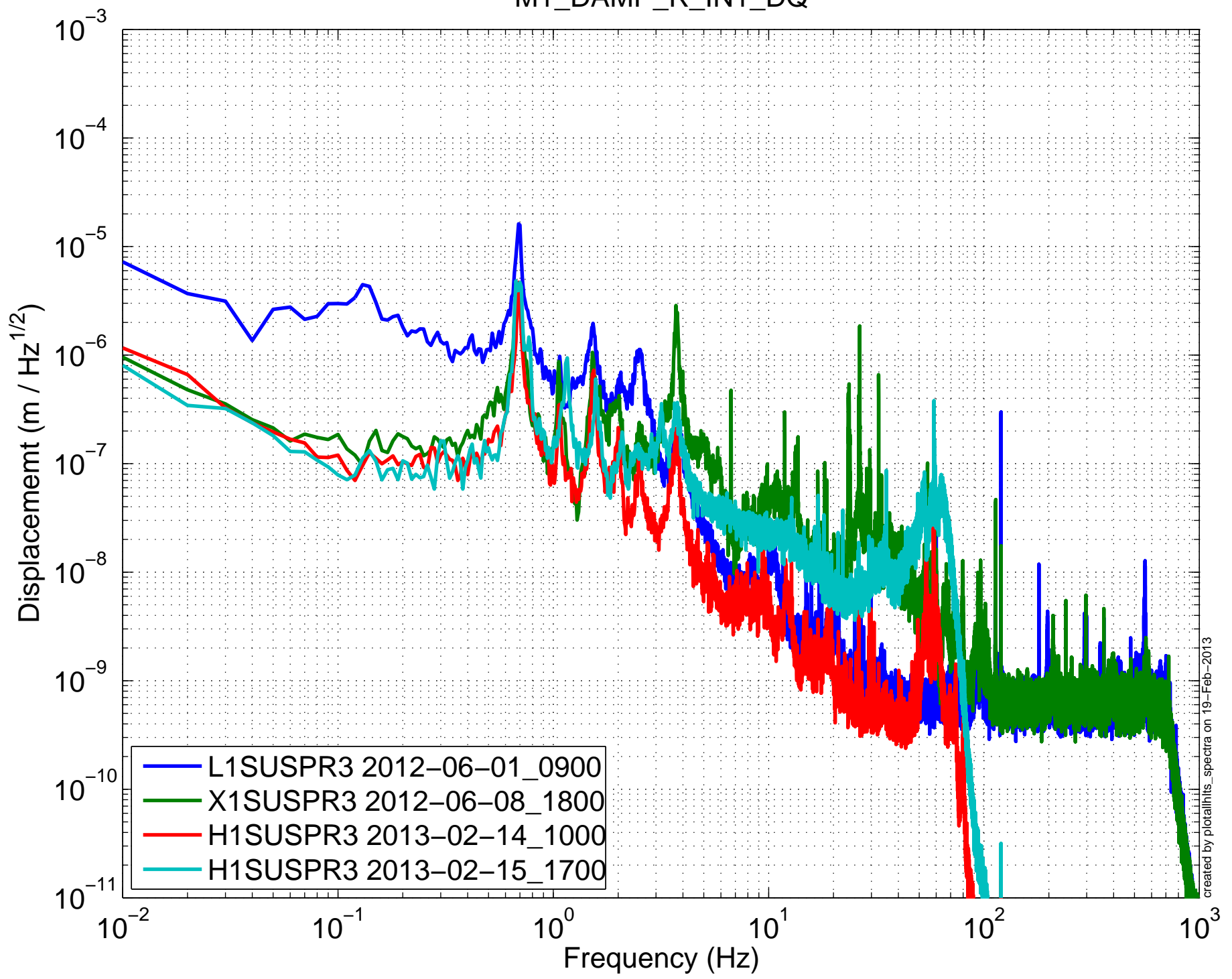


(HLTS) Amplitude Spectral Density – Damping ON  
M1\_DAMP\_V\_IN1\_DQ



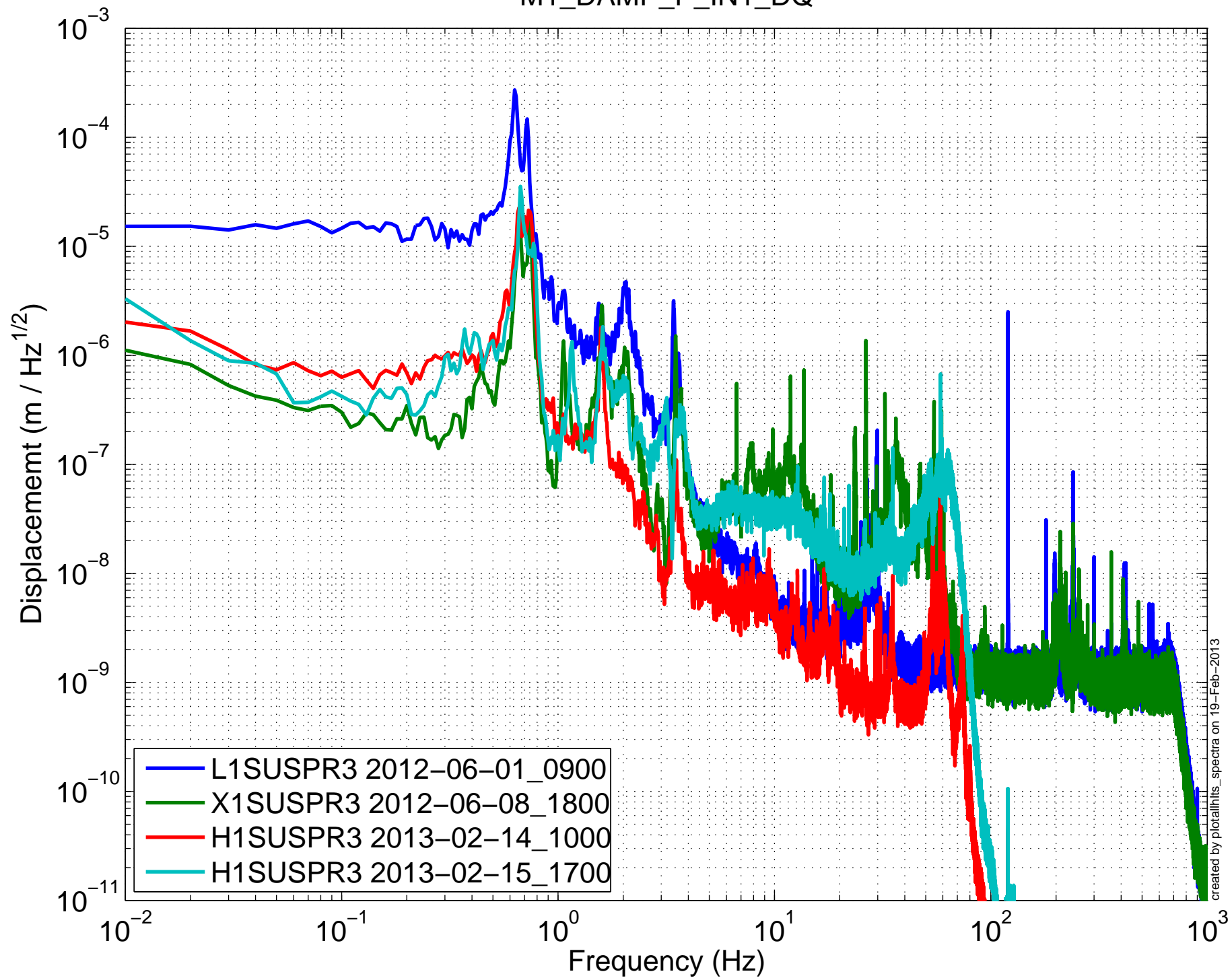
created by plotallhls\_spectra on 19-Feb-2013

(HLTS) Amplitude Spectral Density – Damping ON  
M1\_DAMP\_R\_IN1\_DQ

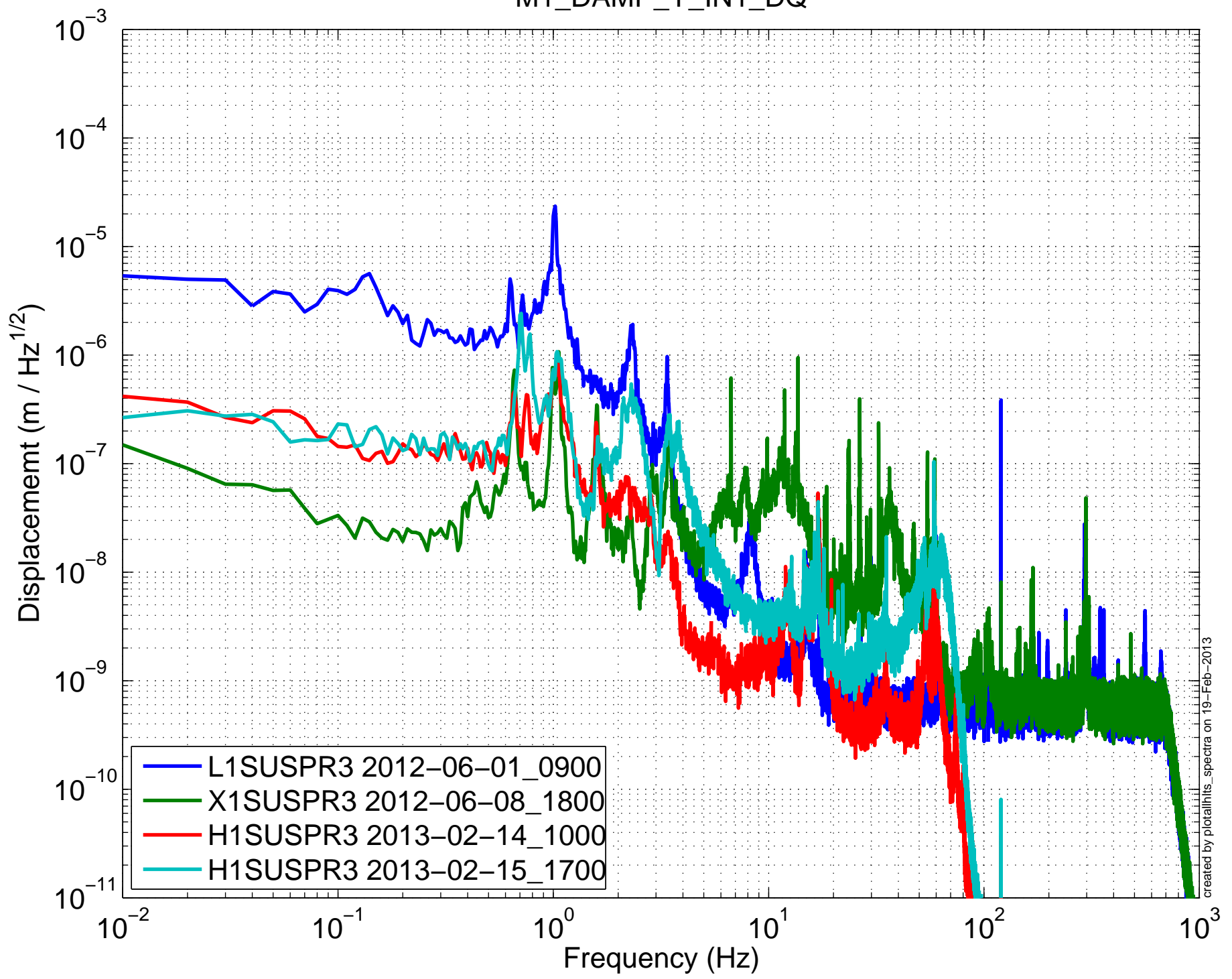


created by plotallhls\_spectra on 19-Feb-2013

(HLTS) Amplitude Spectral Density – Damping ON  
M1\_DAMP\_P\_IN1\_DQ

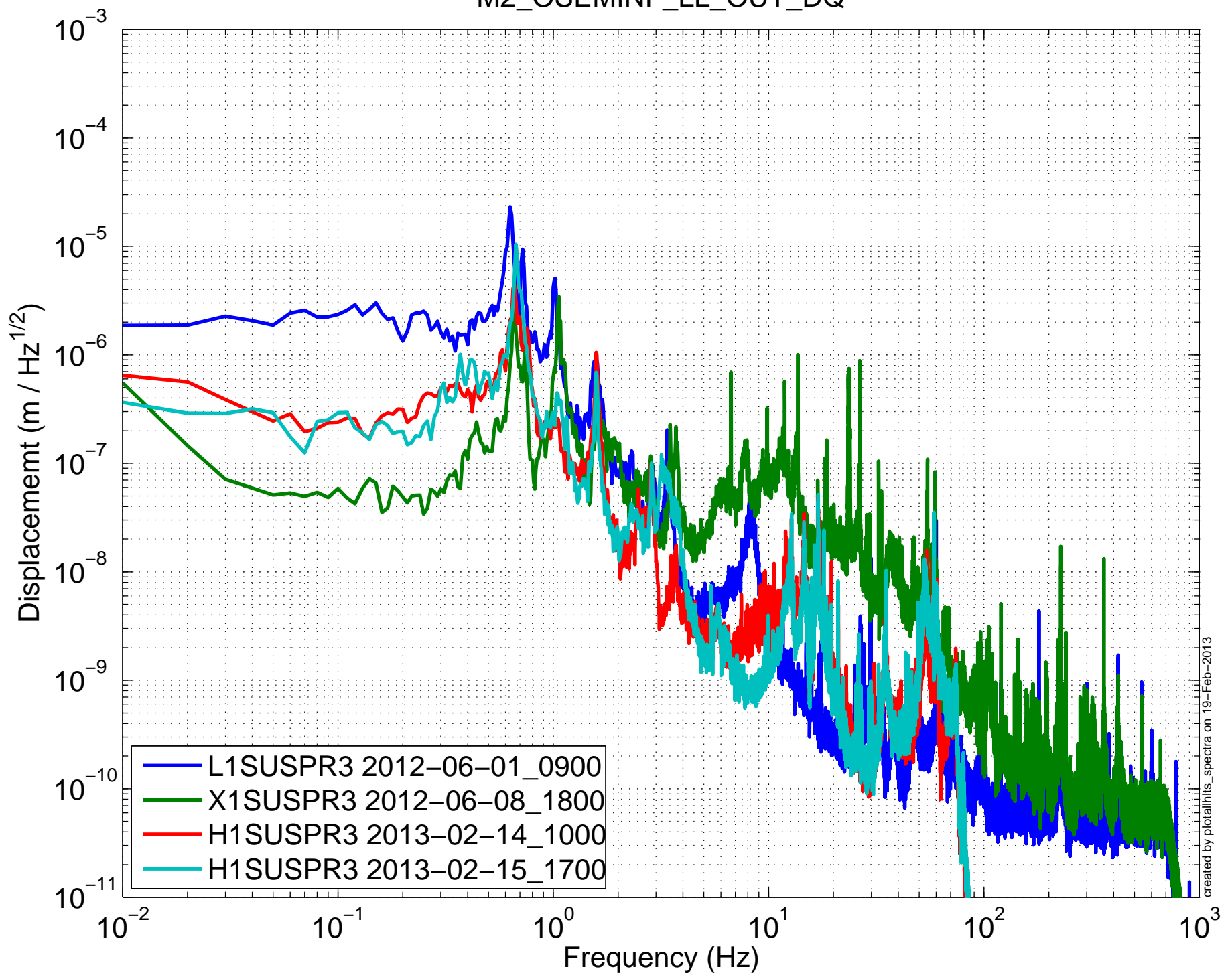


(HLTS) Amplitude Spectral Density – Damping ON  
M1\_DAMP\_Y\_IN1\_DQ



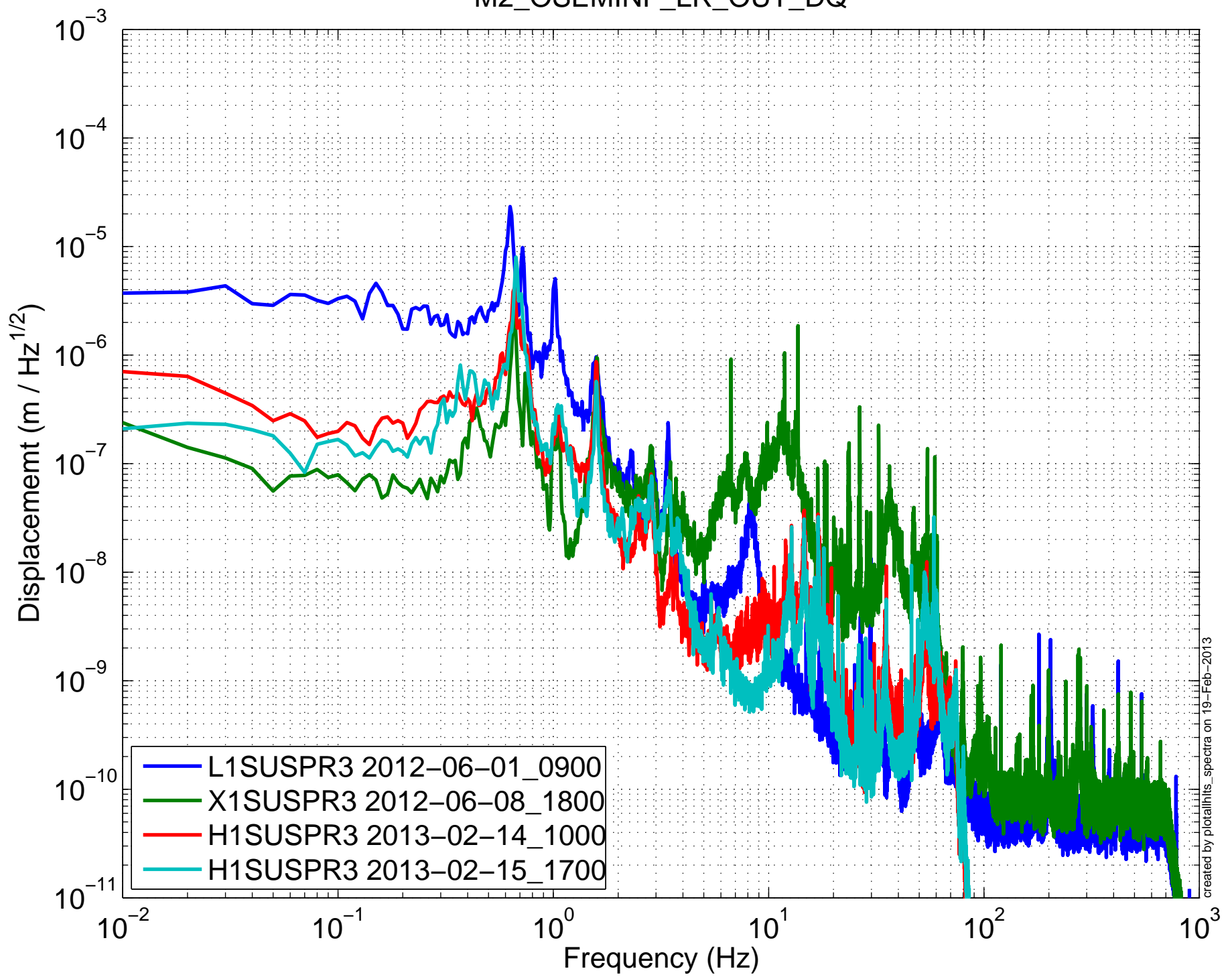
created by plotallhls\_spectra on 19-Feb-2013

(HLTS) Amplitude Spectral Density – Damping ON  
M2\_OSEMINF\_LL\_OUT\_DQ



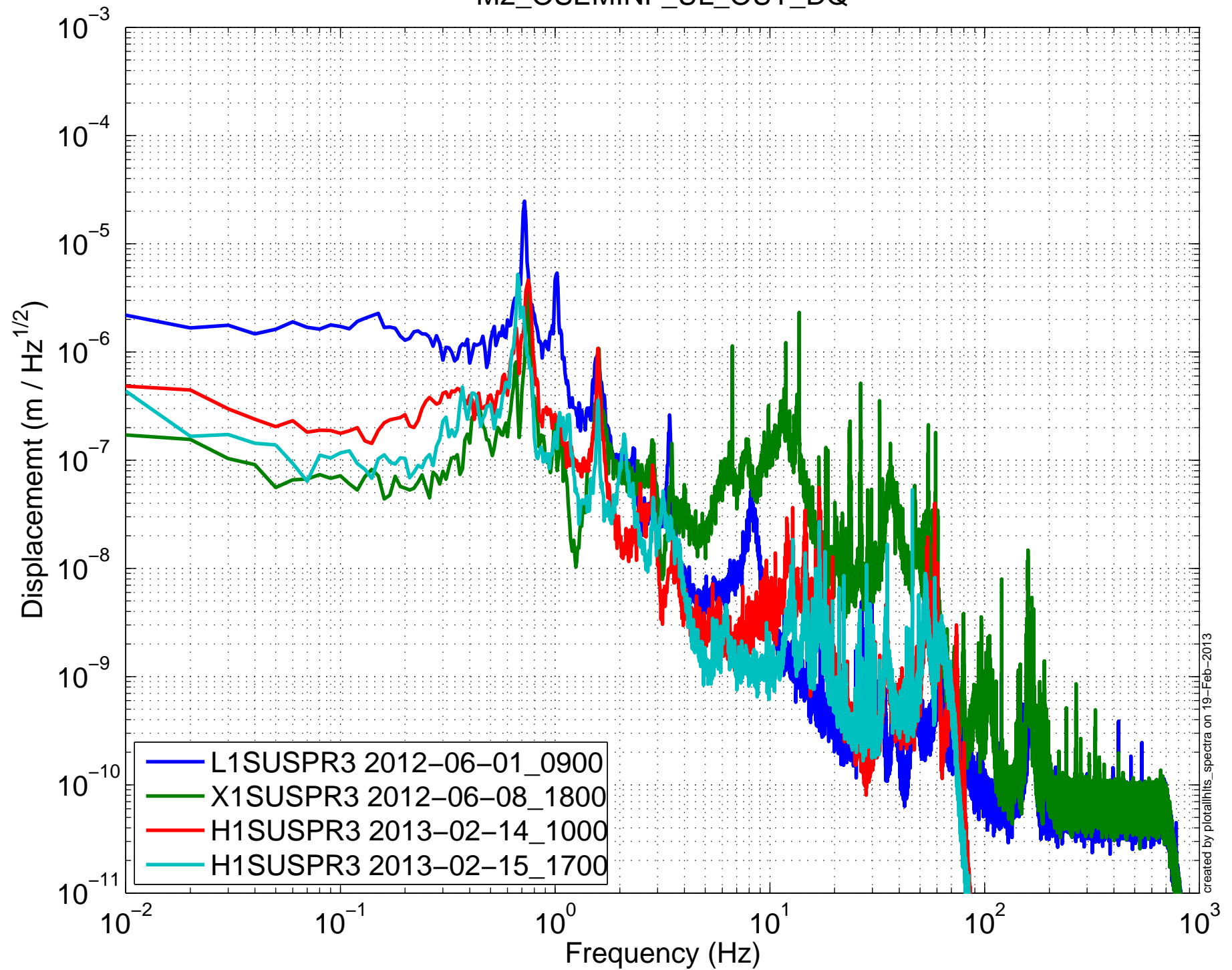
created by plotallhls\_spectra on 19-Feb-2013

(HLTS) Amplitude Spectral Density – Damping ON  
M2\_OSEMINF\_LR\_OUT\_DQ

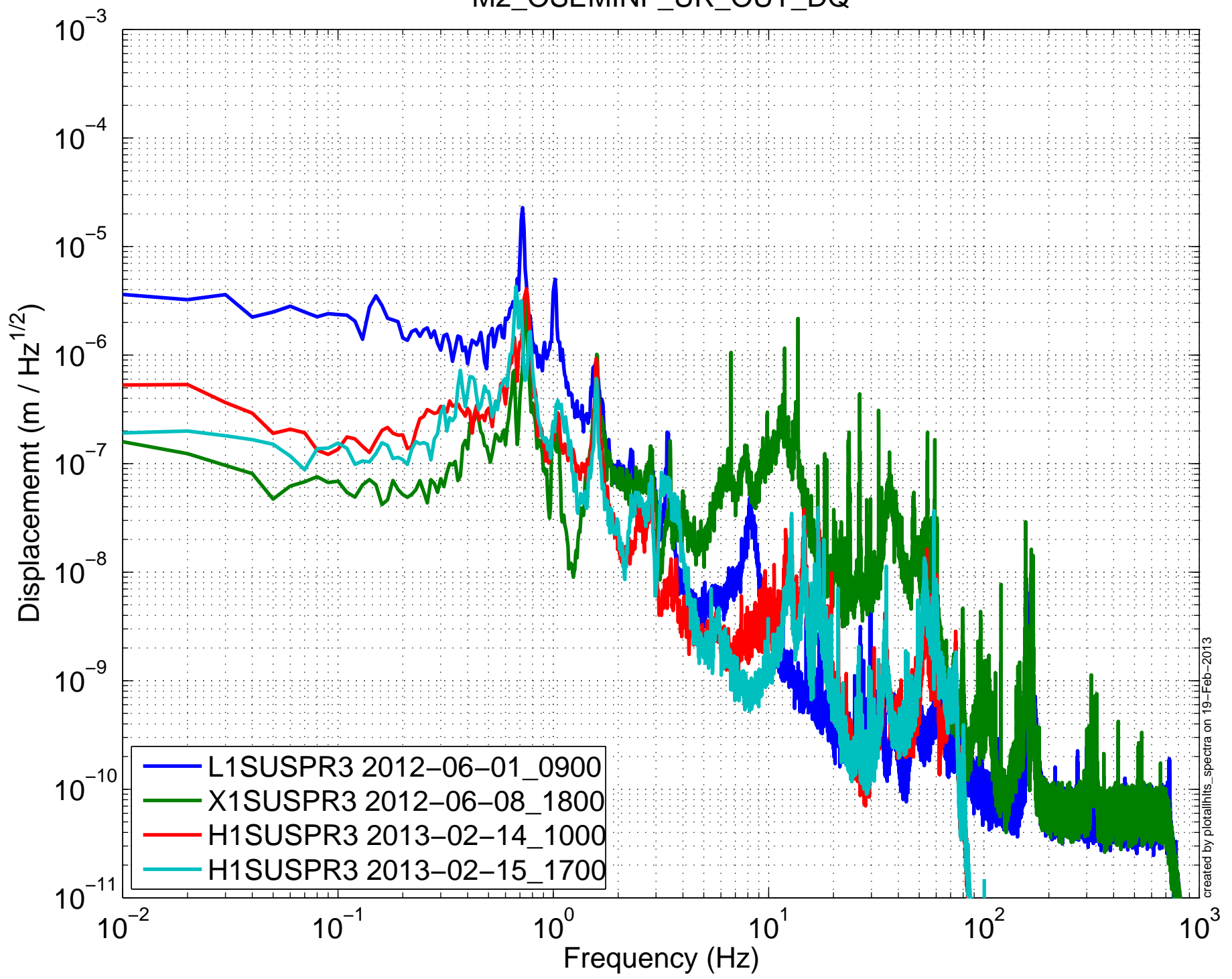


created by plotallhls\_spectra on 19-Feb-2013

(HLTS) Amplitude Spectral Density – Damping ON  
M2\_OSEMINF\_UL\_OUT\_DQ



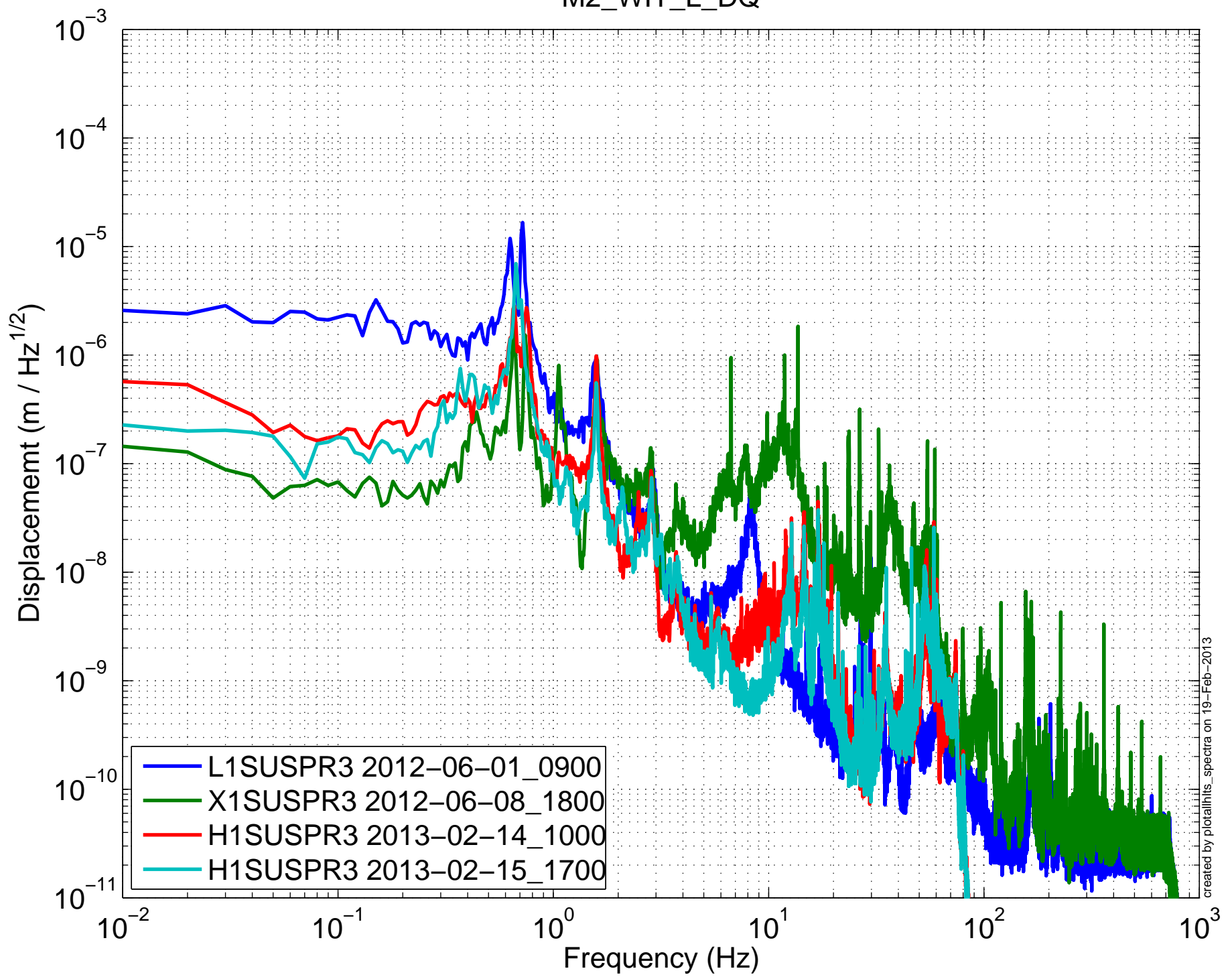
(HLTS) Amplitude Spectral Density – Damping ON  
M2\_OSEMINF\_UR\_OUT\_DQ



created by plotallhls\_spectra on 19-Feb-2013

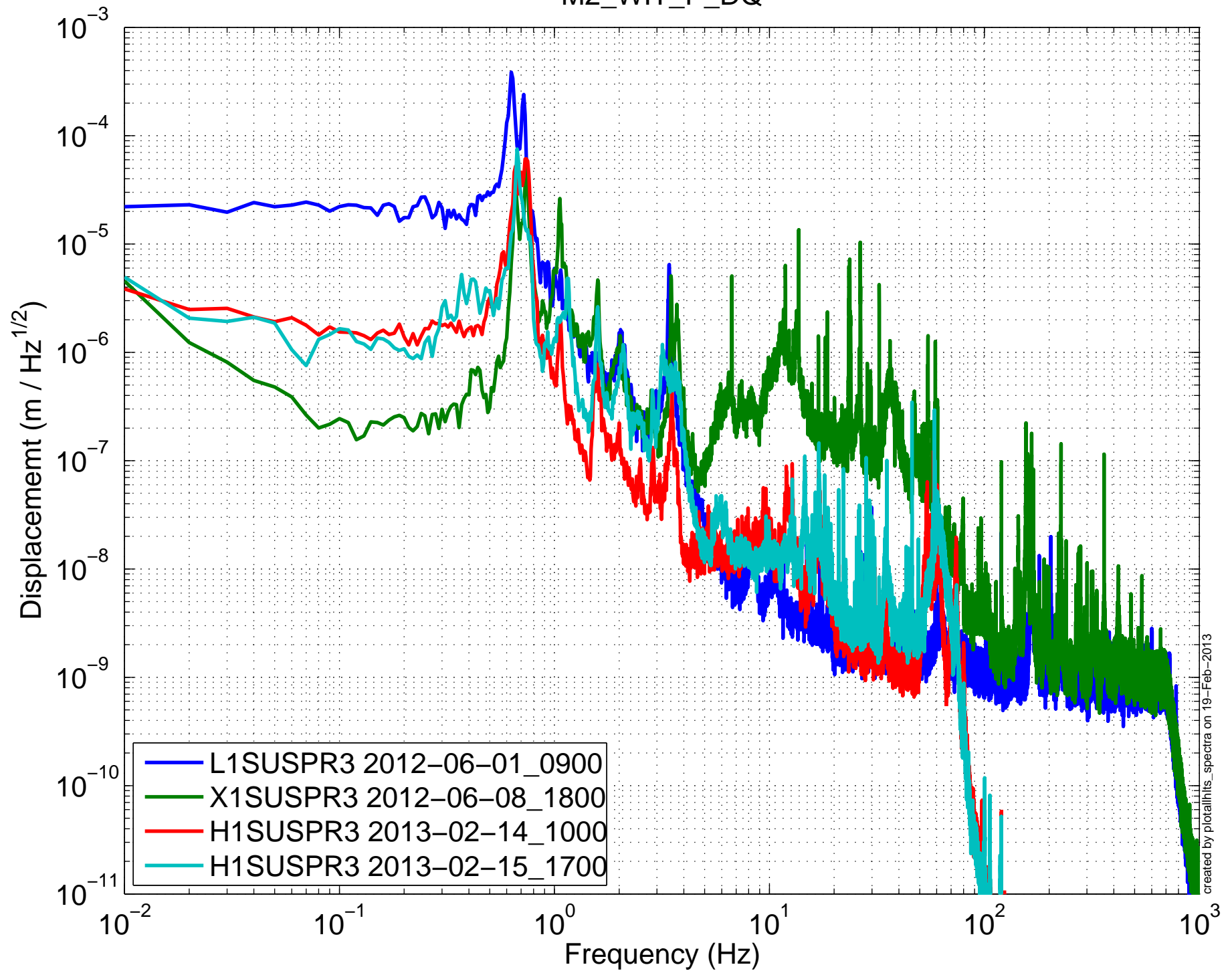


(HLTS) Amplitude Spectral Density – Damping ON  
M2\_WIT\_L\_DQ

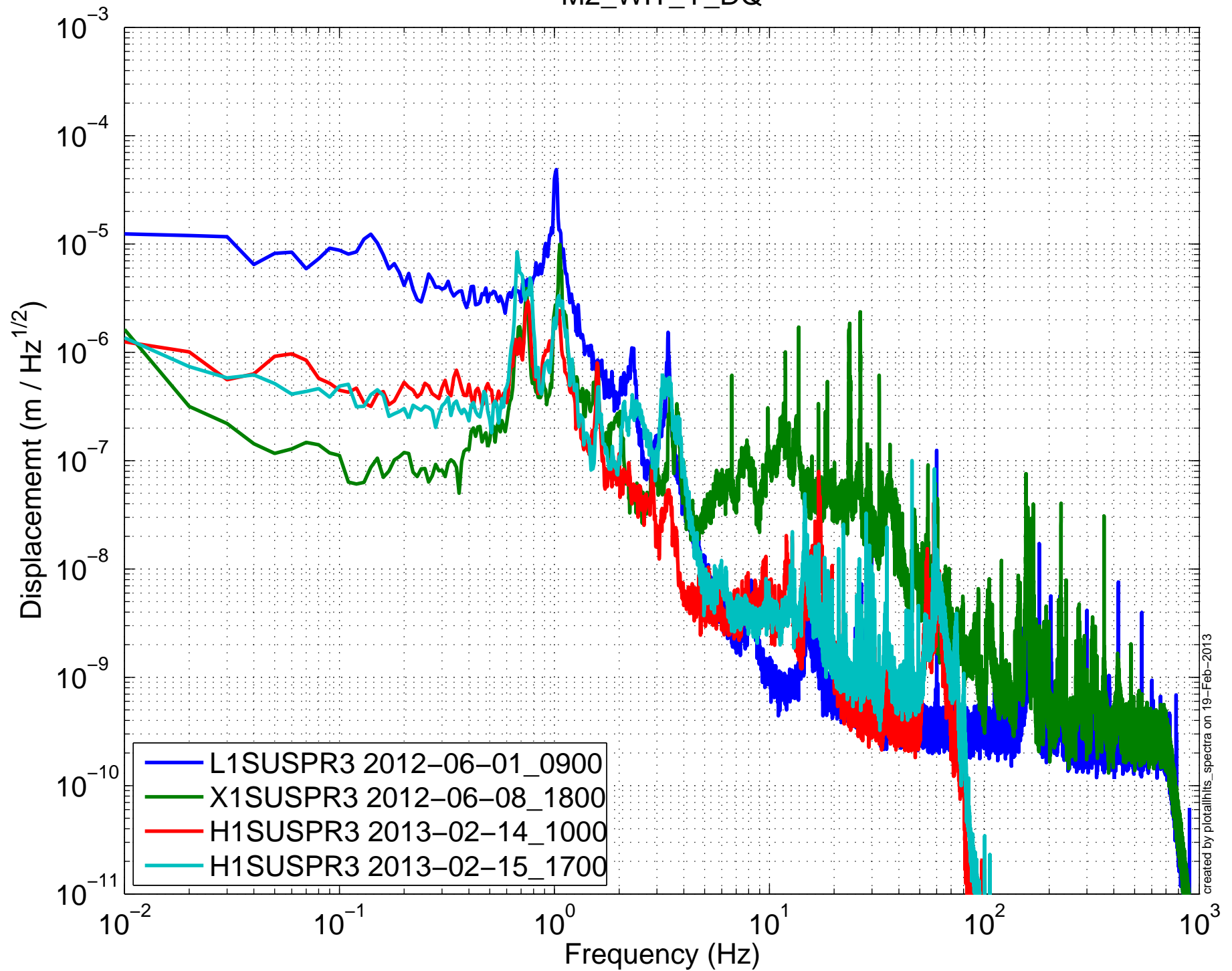


created by plotallhls\_spectra on 19-Feb-2013

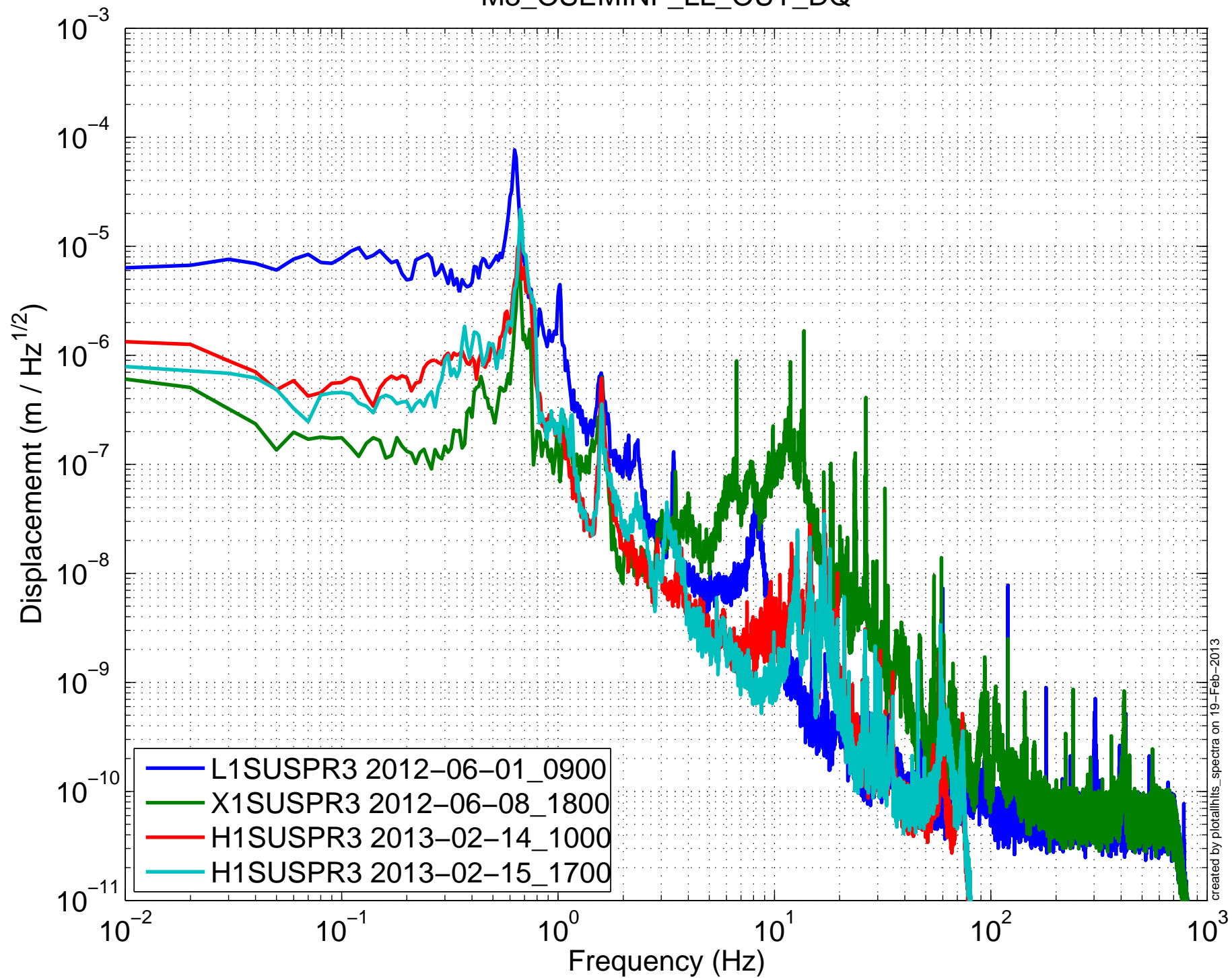
(HLTS) Amplitude Spectral Density – Damping ON  
M2\_WIT\_P\_DQ



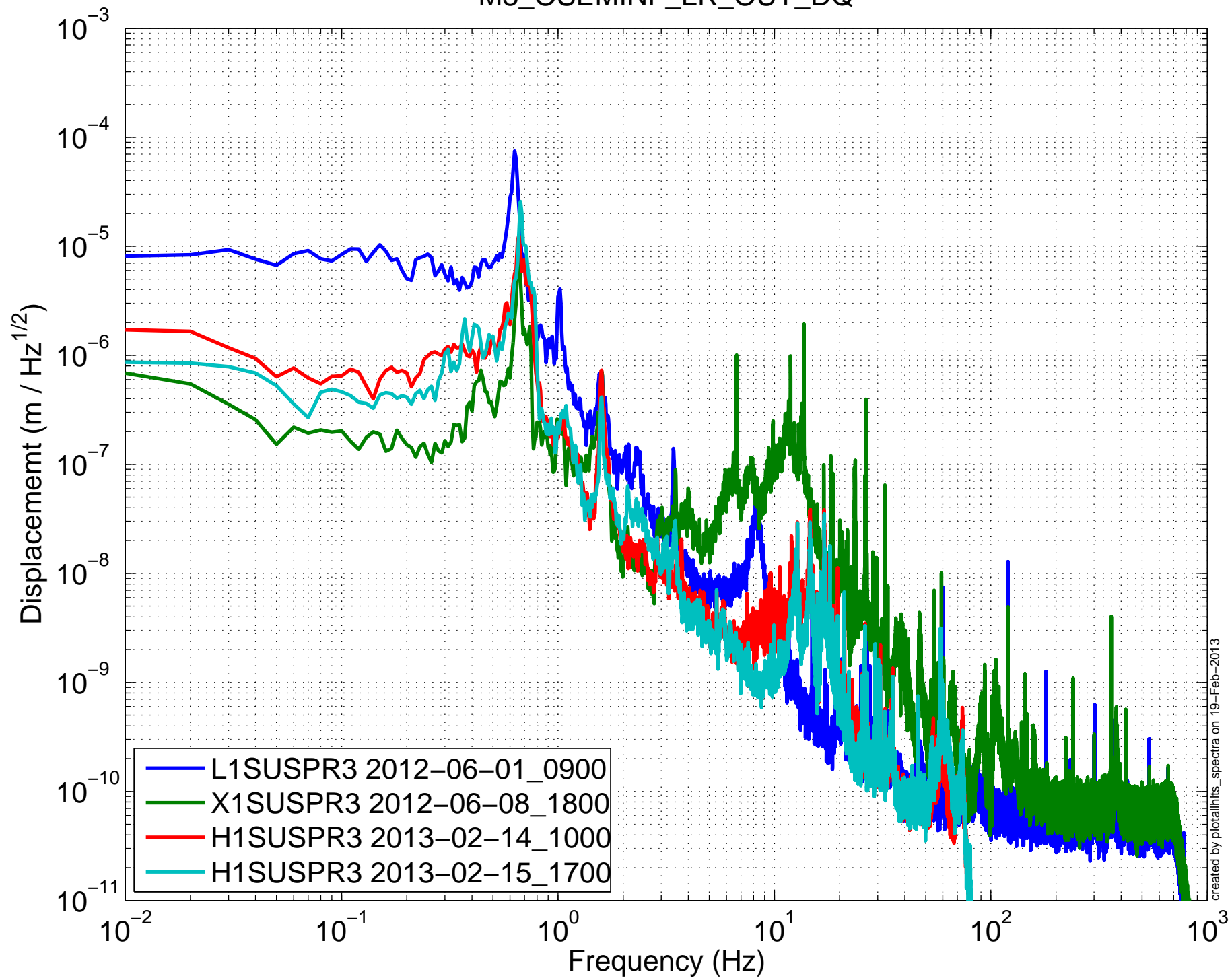
(HLTS) Amplitude Spectral Density – Damping ON  
M2\_WIT\_Y\_DQ



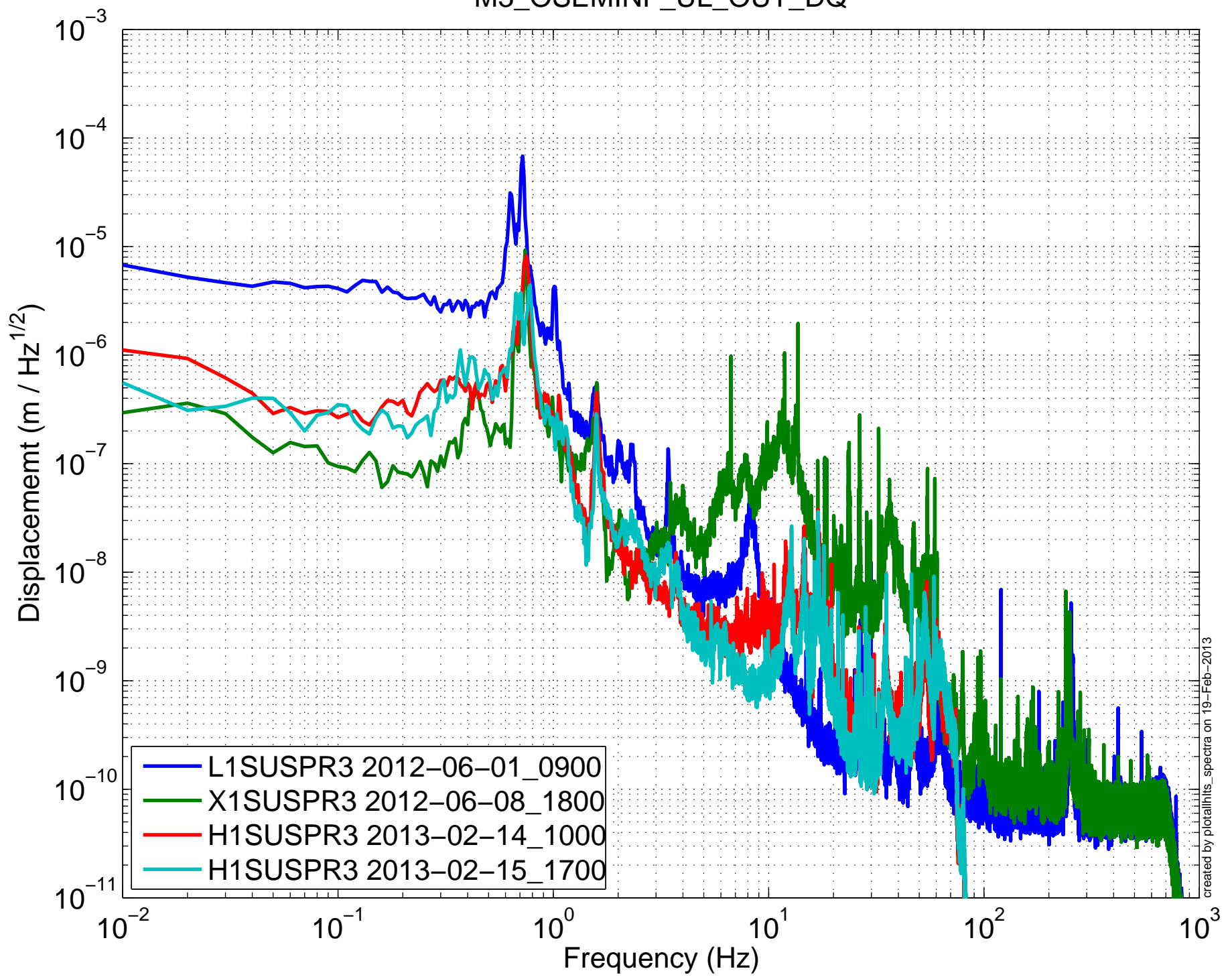
(HLTS) Amplitude Spectral Density – Damping ON  
M3\_OSEMINF\_LL\_OUT\_DQ



(HLTS) Amplitude Spectral Density – Damping ON  
M3\_OSEMINF\_LR\_OUT\_DQ

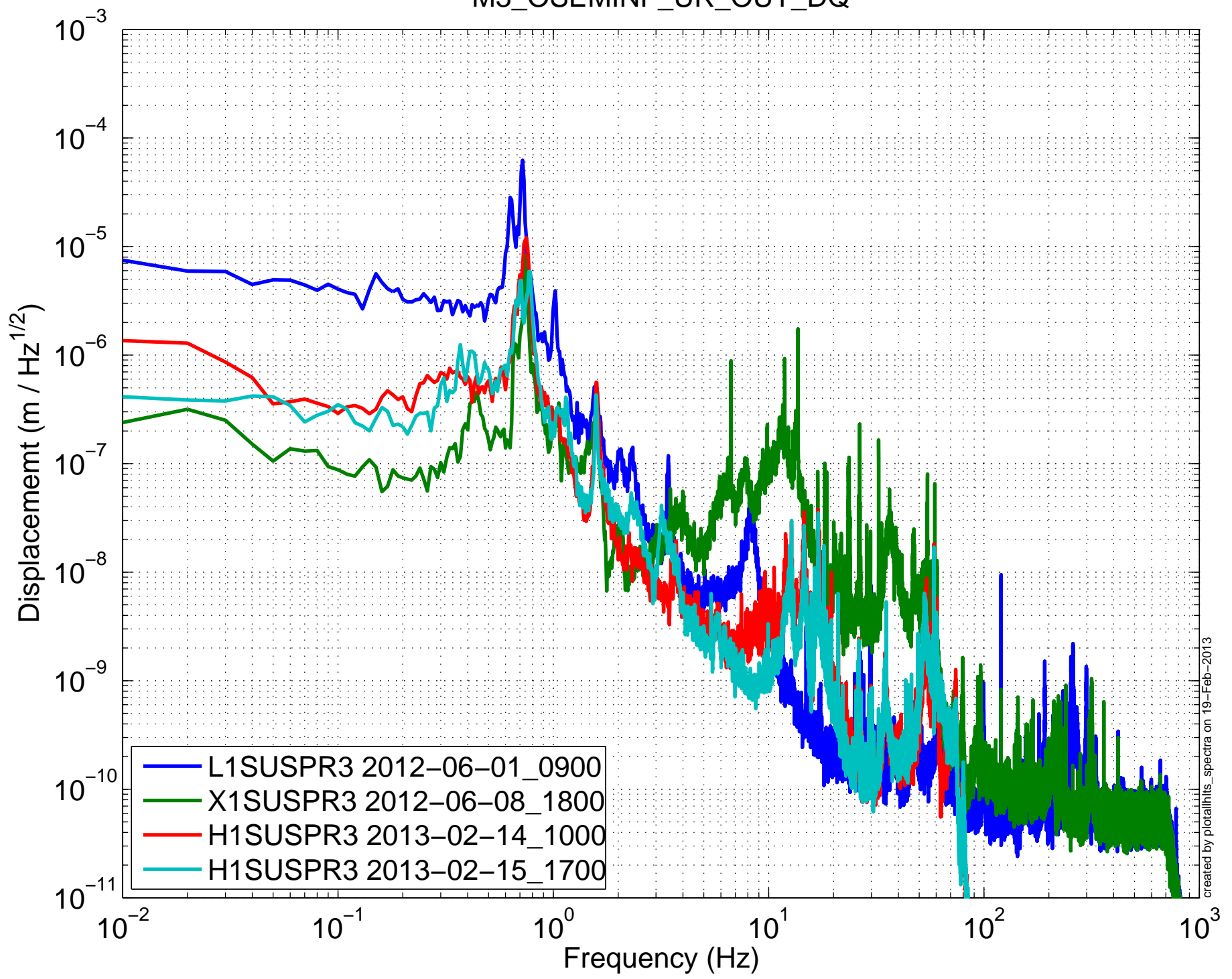


(HLTS) Amplitude Spectral Density – Damping ON  
M3\_OSEMINF\_UL\_OUT\_DQ



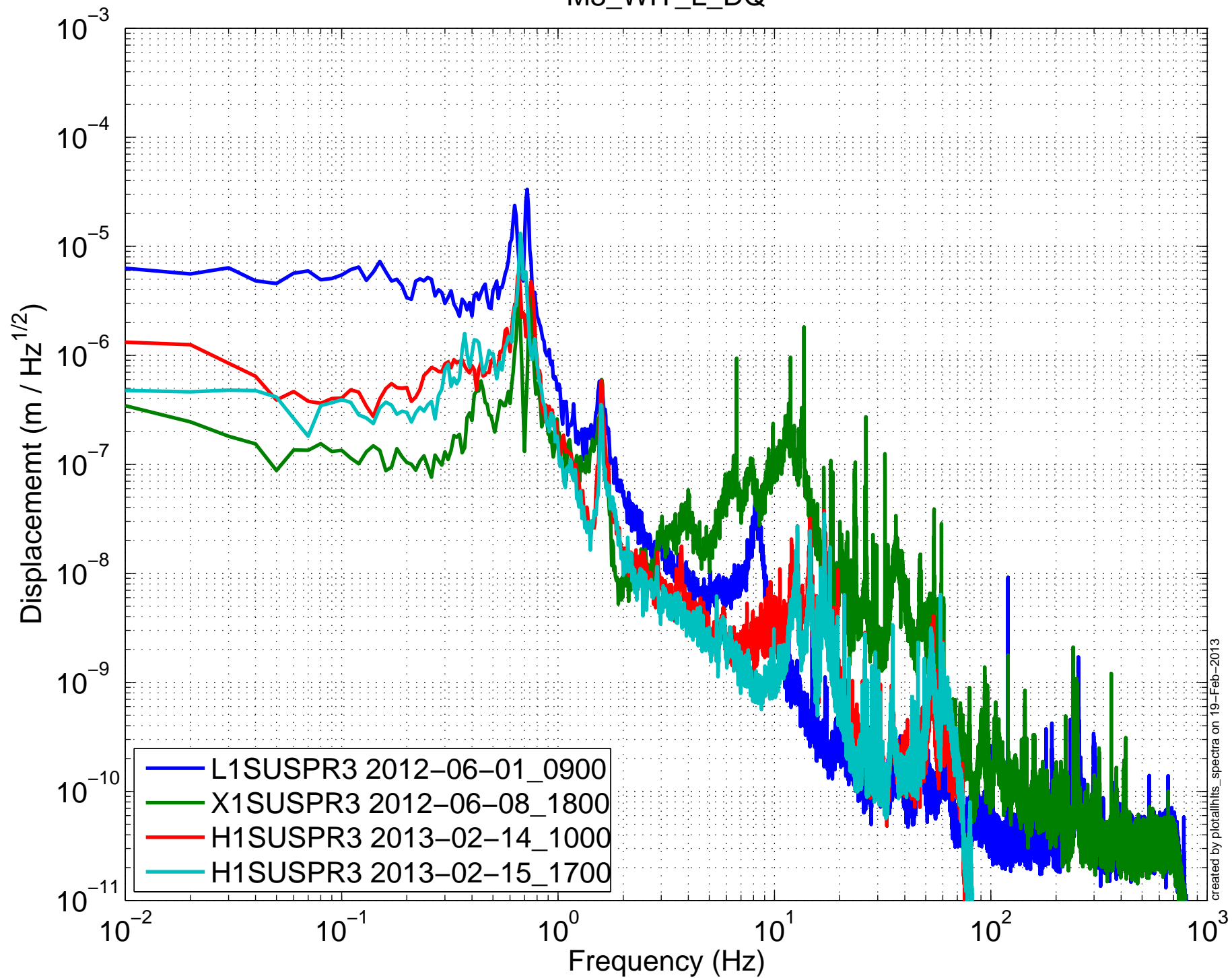
created by plotallhls\_spectra on 19-Feb-2013

(HLTS) Amplitude Spectral Density – Damping ON  
M3\_OSEMINF\_UR\_OUT\_DQ



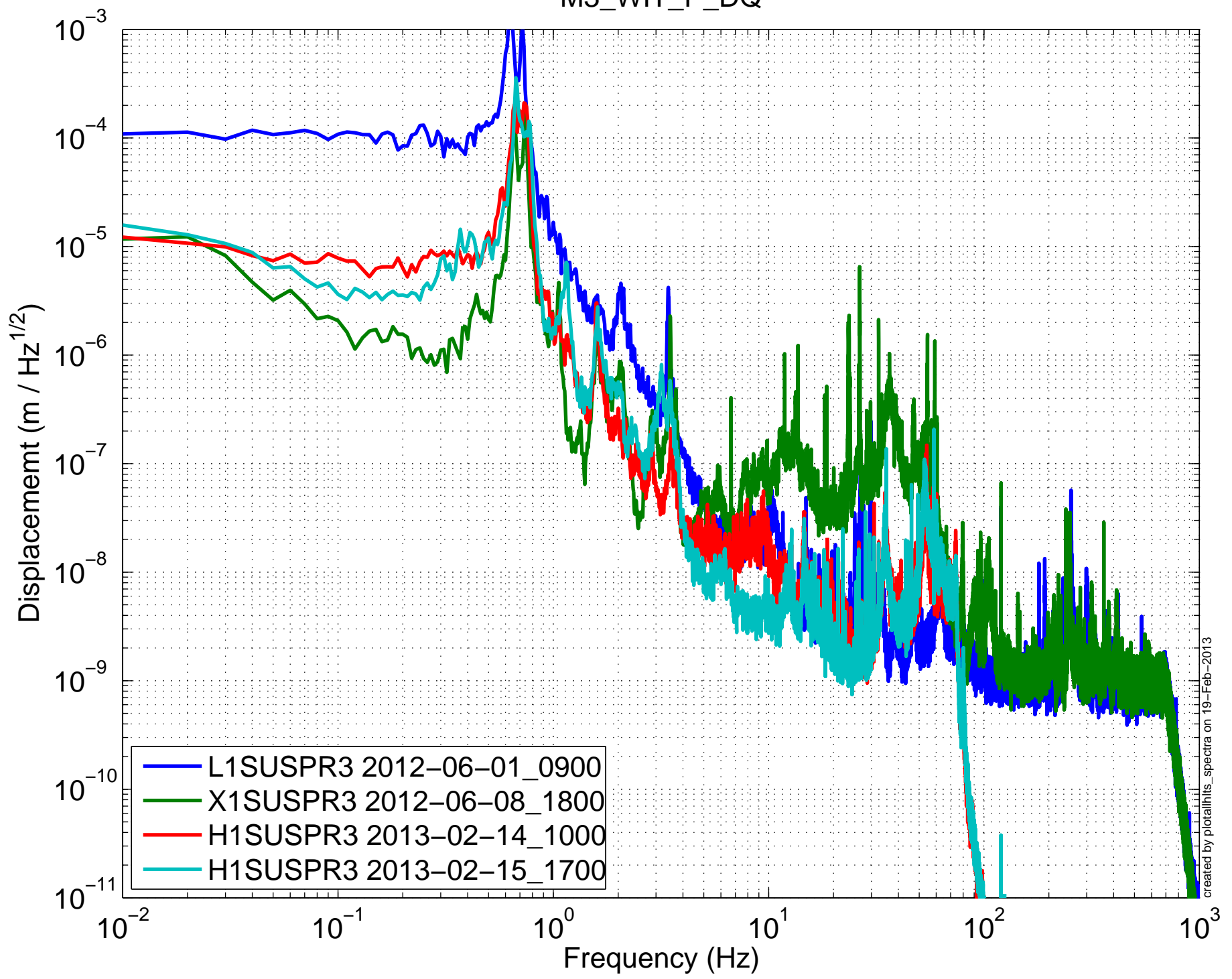
created by plotallhls\_spectra on 19-Feb-2013

(HLTS) Amplitude Spectral Density – Damping ON  
M3\_WIT\_L\_DQ





(HLTS) Amplitude Spectral Density – Damping ON  
M3\_WIT\_P\_DQ



created by plotallhls\_spectra on 19-Feb-2013

(HLTS) Amplitude Spectral Density – Damping ON  
M3\_WIT\_Y\_DQ

