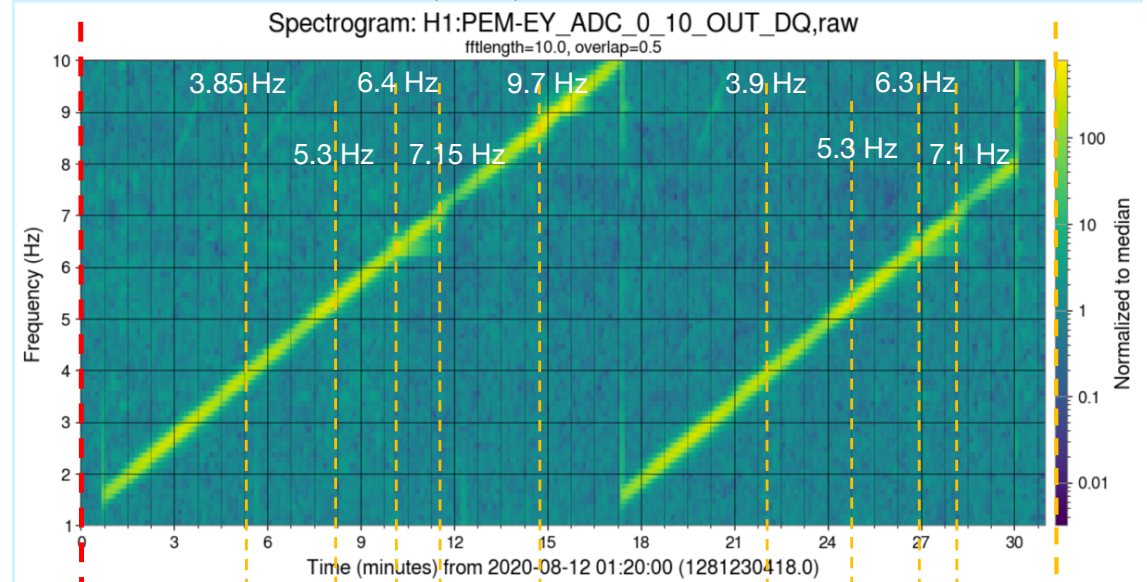
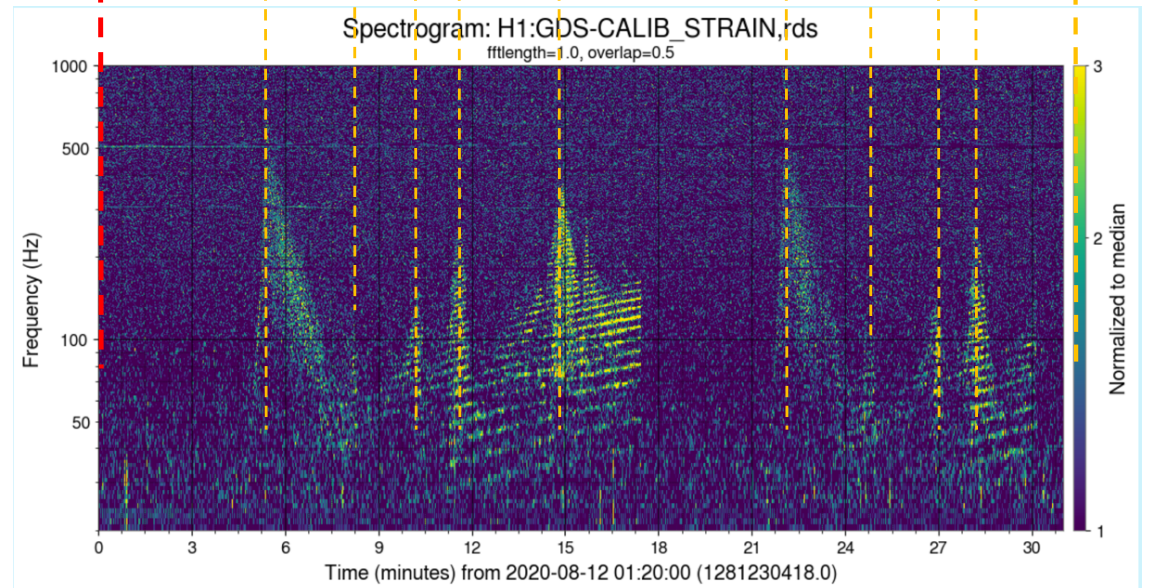


Sweep at EY: worst resonance at ~3.8 Hz

Spectrogram of accelerometer on manifold as injection sweeps twice between 1 and 10 Hz



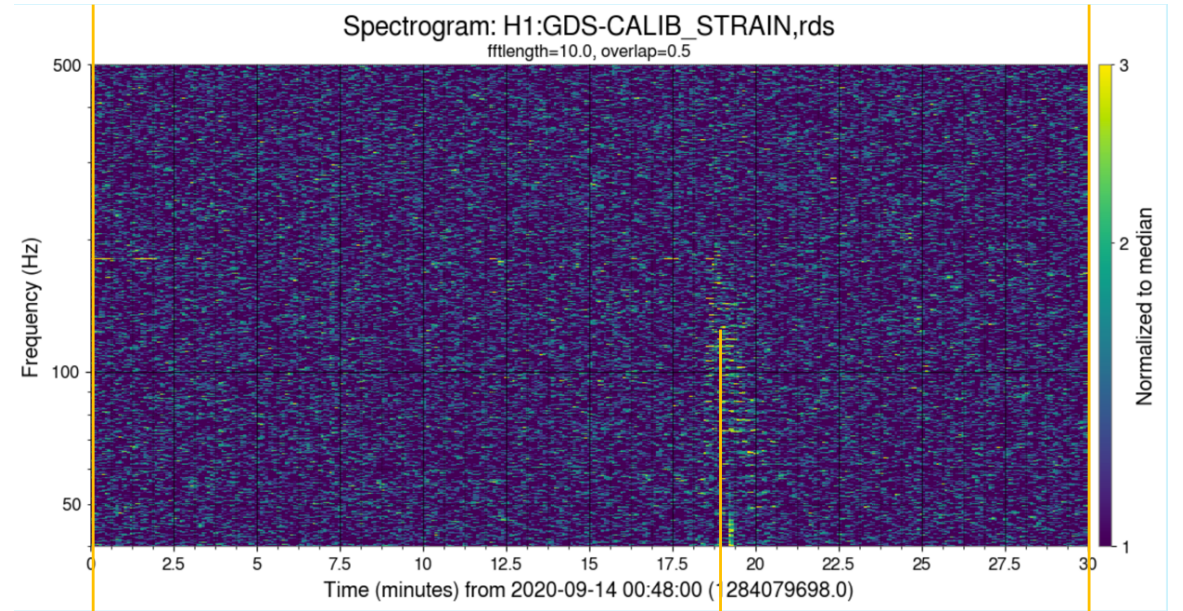
Spectrogram of DARM showing that scattering noise occurs when injection is at 3.85 Hz



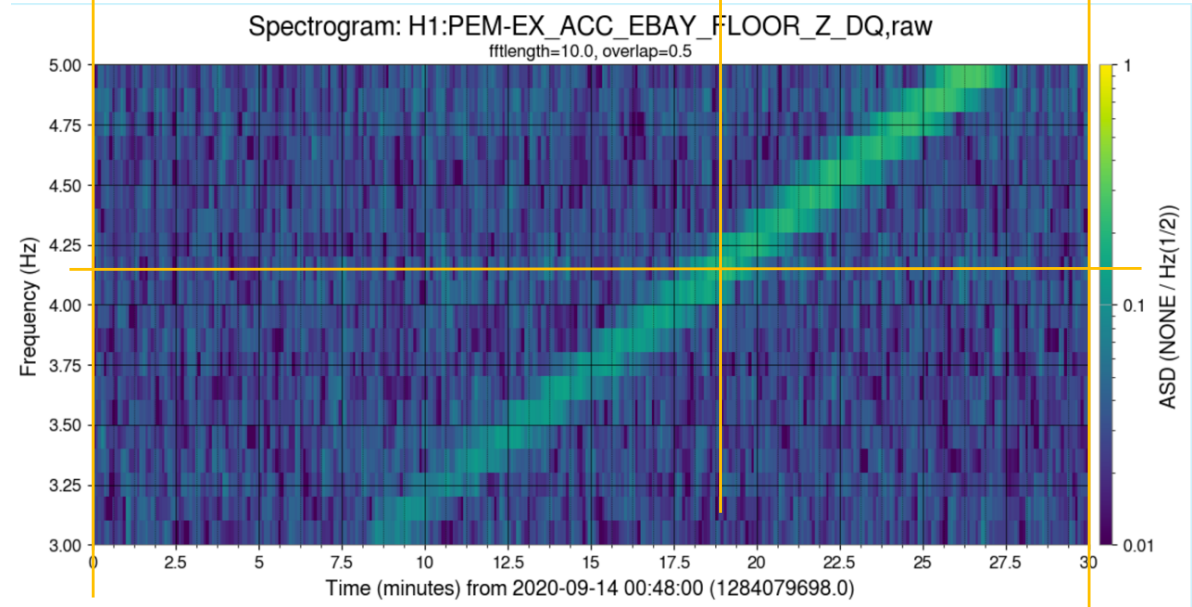
MORE FIGURE ON NEXT PAGE

Sweep at EX: worst resonance at ~4.1 Hz

Spectrogram of DARM showing that scattering noise occurs when injection is at 4.15 Hz



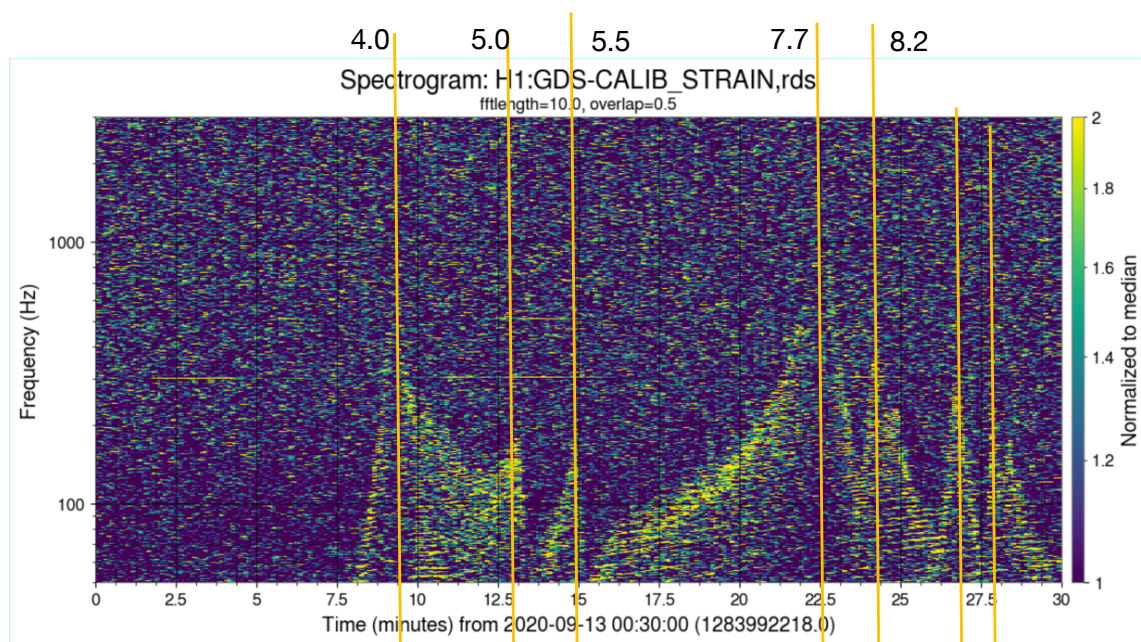
Spectrogram of accelerometer on manifold, beam axis, as injection sweeps



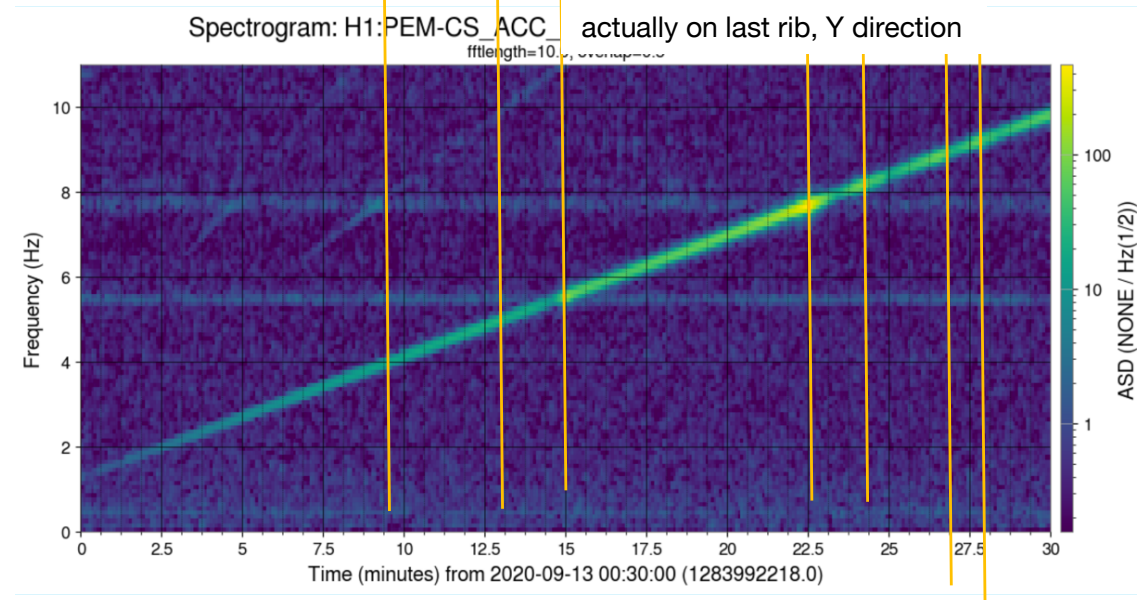
MORE FIGURE ON NEXT PAGE

**Sweep at Y-manifold by ITMY optical levers:
worst resonance at ~4.0 Hz**

Spectrogram of DARM showing that scattering noise occurs when injection is at 4.0 Hz



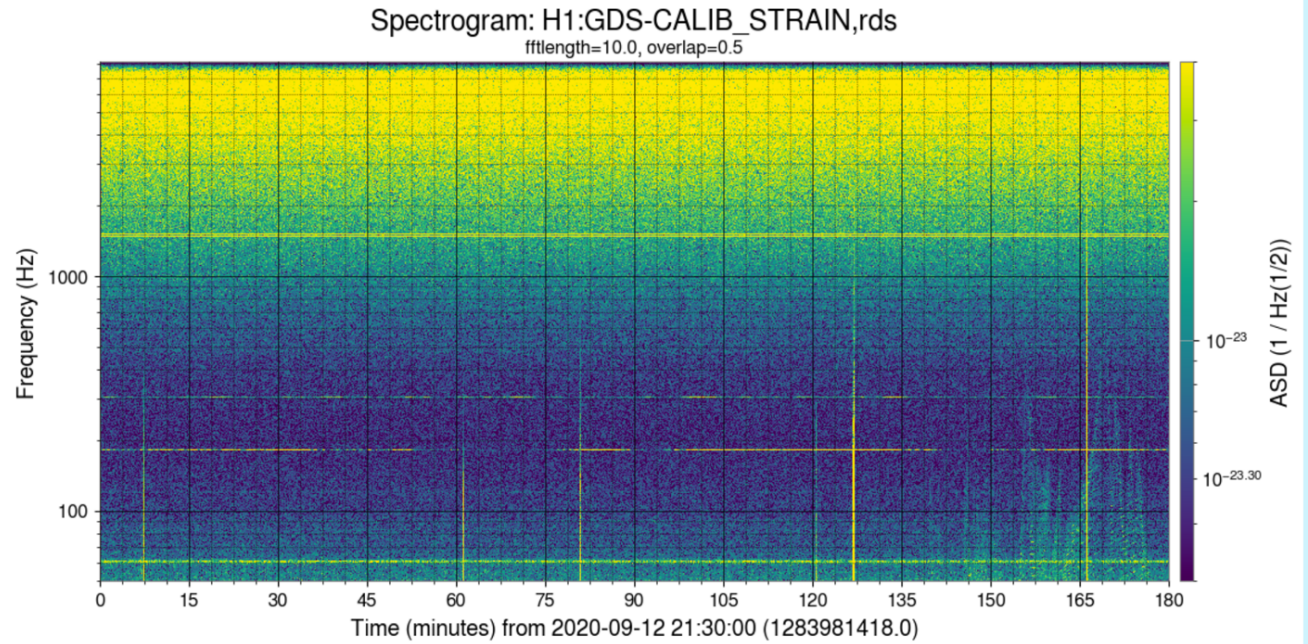
Spectrogram of accelerometer on manifold, beam axis, as injection sweeps



MORE FIGURE ON NEXT PAGE

Sweep at X-manifold by ITMX optical lever: no DARM noise seen

Spectrogram of DARM showing no scattering noise during injection sweeps



Spectrogram of accelerometer on manifold, beam axis, as injection sweeps

