

v. Frequency response

Data collection scripts location:

`/opt/svncommon/seisvn/seismic/HAM-ISI/X1/Scripts/DataCollection/*.*`

Data location:

`/opt/svncommon/seisvn/seismic/HAM-ISI/X1/Data/unit_1/TransferFunctionData/`

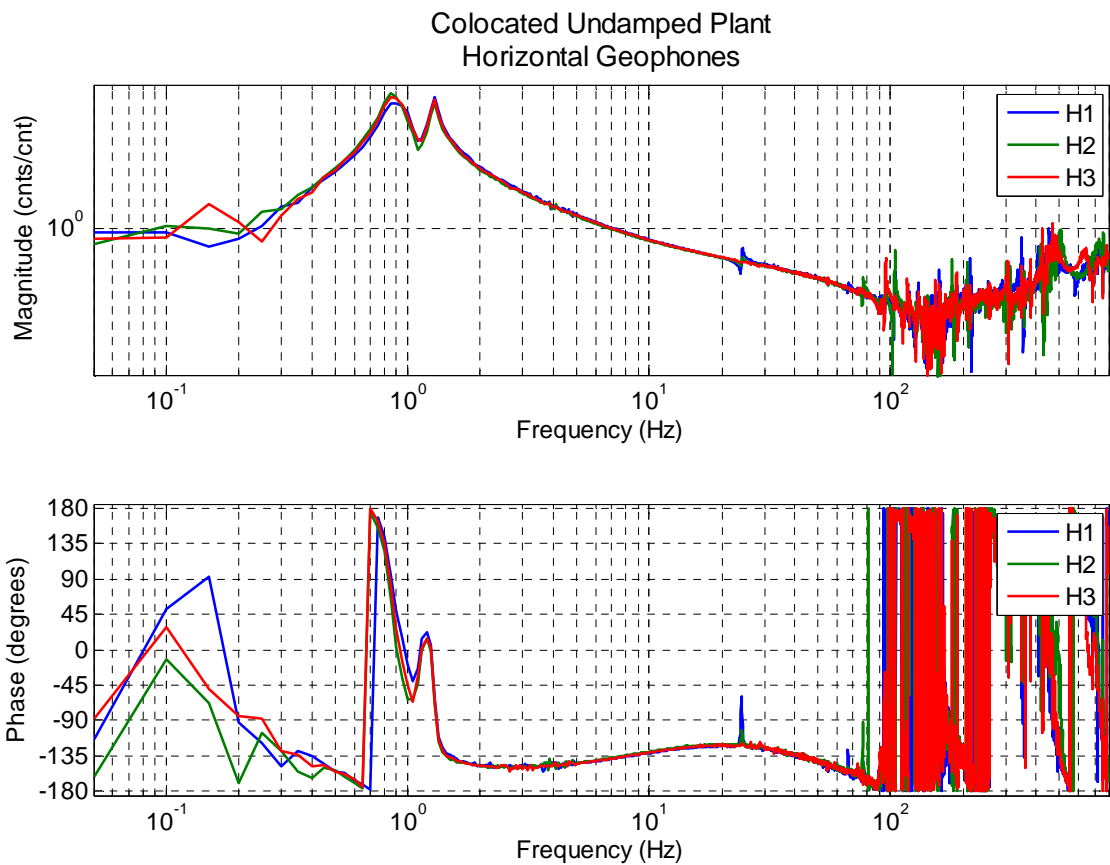
Plot data script location:

`/opt/svncommon/seisvn/seismic/HAM-ISI/X1/Scripts/DataAnalysis/unit_1/`

Figure location:

`/opt/svncommon/seisvn/seismic/HAM-ISI/X1/Data/unit_1/Figures/`

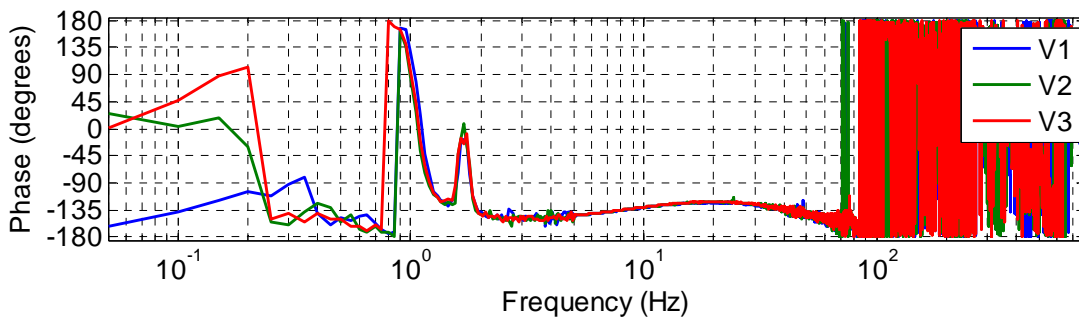
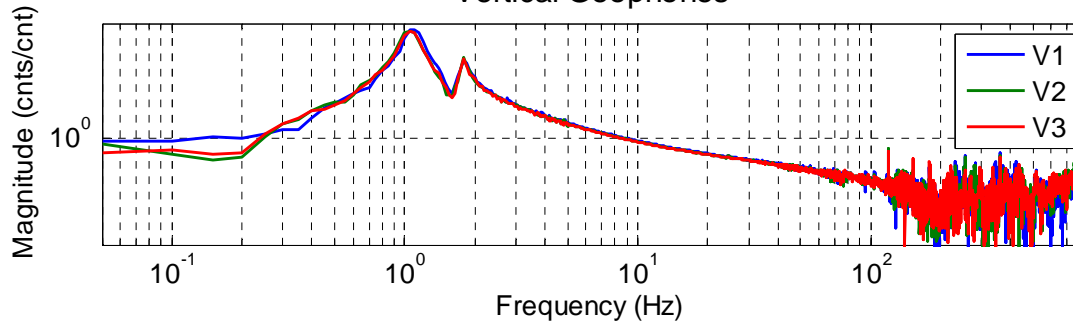
- Horizontal GS13, Local to local measurement, Undamped.



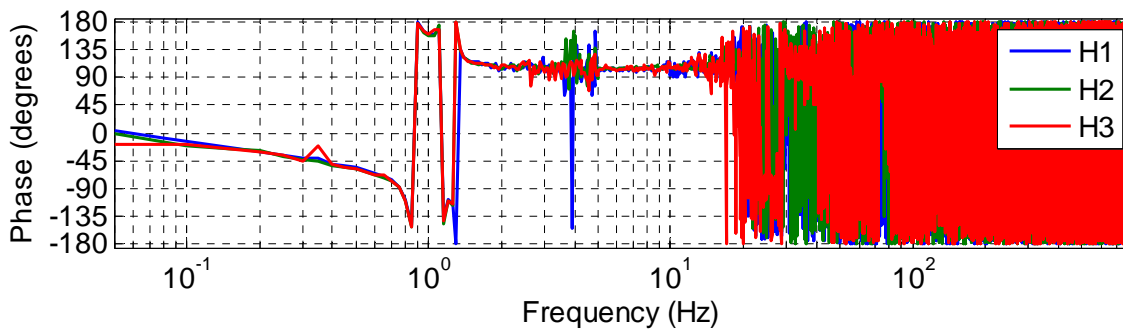
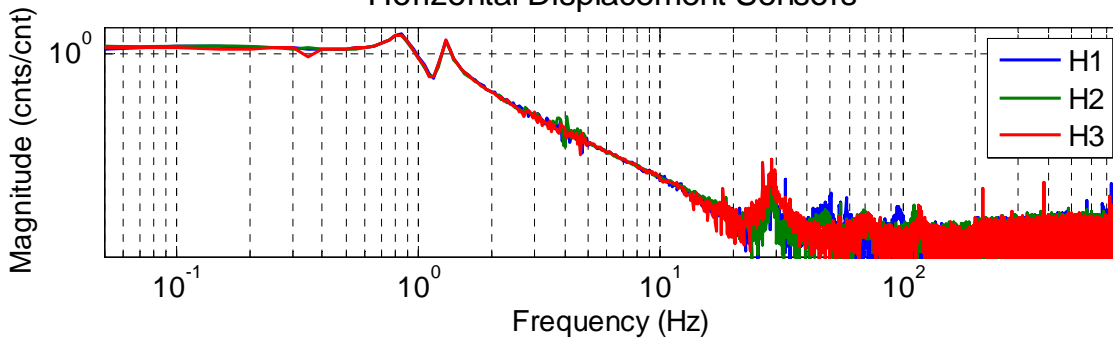
Comments:

- Corners are well symmetric
- Low frequency data is noisy. Needs to increase the number of averages
- Transfer functions are going to be compared with HAM 6 measurements
- There is an undesired resonance at 24Hz

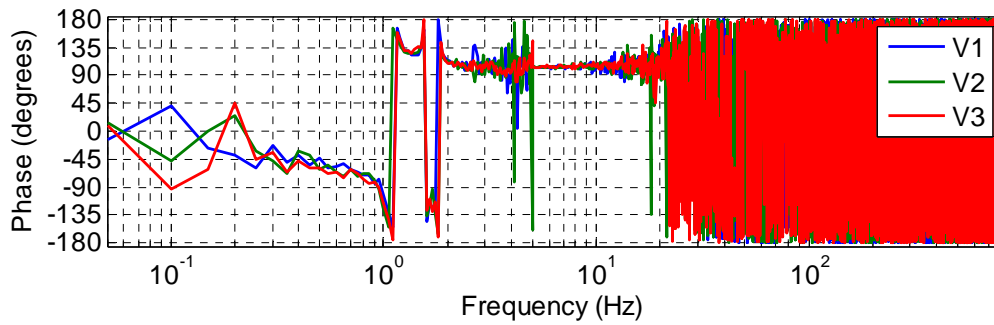
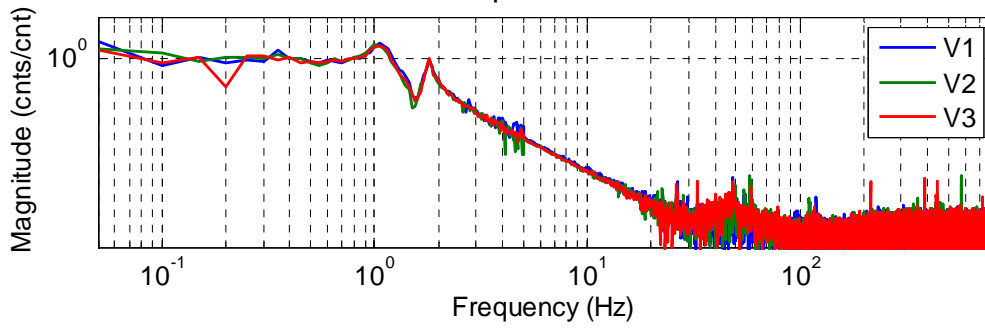
LHO Test Stand ISI July 30, 2010
Colocated Undamped Plant
Vertical Geophones



LHO Test Stand ISI July 30, 2010
Colocated Undamped Plant
Horizontal Displacement Sensors



LHO Test Stand ISI July 30, 2010
Colocated Undamped Plant
Vertical Displacement Sensors



Filename: T1000329 aLIGO SEI Testing Report, HAM-ISI, LHO Unit
#1_V7.doc
Directory: C:\Documents and Settings\Fabrice\My Documents
Template: C:\Documents and Settings\Fabrice\Application
Data\Microsoft\Templates\Normal.dotm
Title: LIGO Laboratory / LIGO Scientific Collaboration
Subject:
Author: Fabrice Matichard
Keywords:
Comments:
Creation Date: 7/1/2010 3:55:00 AM
Change Number: 25
Last Saved On: 7/1/2010 11:39:00 AM
Last Saved By: Fabrice Matichard
Total Editing Time: 343 Minutes
Last Printed On: 7/1/2010 11:40:00 AM
As of Last Complete Printing
Number of Pages: 57 (approx.)
Number of Words: 6,960 (approx.)
Number of Characters: 39,676 (approx.)