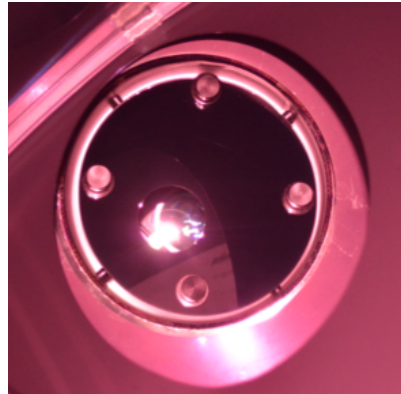
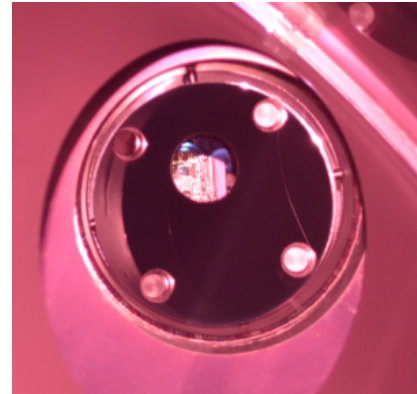


Installed nozzle baffles

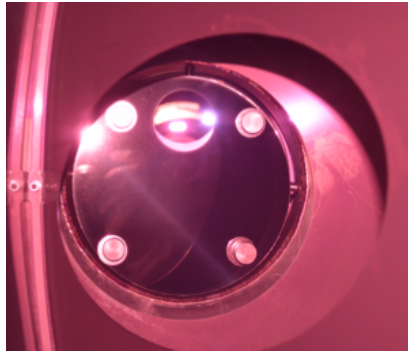
Green camera



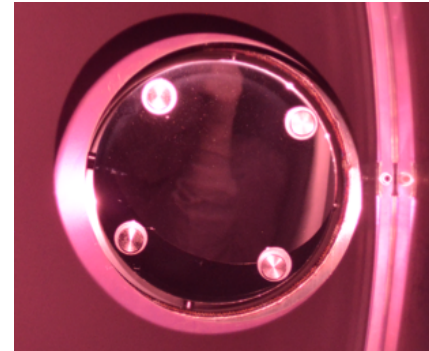
Optical lever photodiode



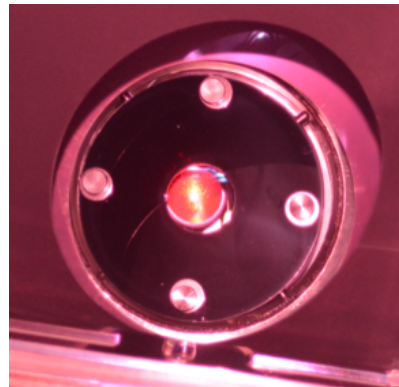
PCal-style camera



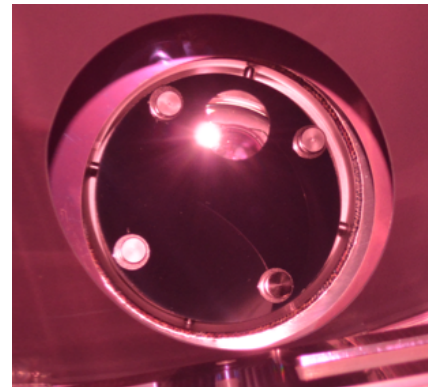
Blank



Optical lever laser

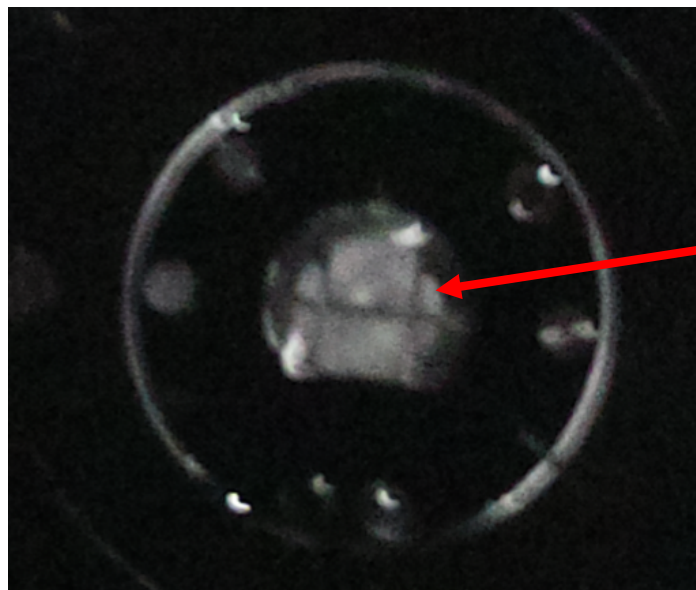


Red GigE camera



940 nm IR photos taken from near the beam spot on ITMX

Before nozzle baffles



closed gate valve

After nozzle baffles



remaining annulus of light
around the cryo-baffle

this optical lever laser was
blocked for the. before image